



# Detail project P75 2.0.2/LZ5 Dark field microscopy-live blood analysis of the IFVBESA to the Leela Quantum Infinity Bloc

Dark field microscopy within a LONG-TERM project  
of the IFVBESA about the effectiveness  
of the product "Leela Quantum Infinity Bloc  
of the company Leela Quantum Tech, LLC  
in this project also called "test object





**Client:**

Company Leela Quantum Tech, LLC  
Attn: Eleonora Goldenberg  
1421 LUISA STREET, STE G  
SANTA FEE, NM 87505  
USA

**Project participants:**

**Project management:** Wolfgang Hans Albrecht, president and scientific director of IFVBESA

**Project execution:** Eva Krankl, vice president and deputy scientific director of the IFVBESA

**Test person (proband):** 1 proband (proband P5) in the LZ detailed project P75 2.0.2/LZ5  
For details on the exact project procedure see page 9 onwards

**Detail-project P75 2.0.2** current proband: P5 female

**further participants:** none

**Project location:** Location of IFVBESA (international professional association for bioenergetic system analysis), Hauptstraße 1, A-4861 Kammer/Schörfling am Attersee

**Date:** 06.06.2022 until 18.08.2022

**Project duration:** 73 days



## Table of contents

	Page
1. basics of the project design	04
2. project design of the IFVBESA	06
2.1 Research questions	
3. research performance	
3.1 Implementation of the procedure	
3.2 Methodology of the procedure	07
3.3 Probanden	
3.4 Research project description	08
3.5 Test procedure	09
4. results	10
5. update on the Test result	18
6. Authorized Summary	19
7. discussion of the study design	20

### Important notes

The client has the right to use this expert opinion. Irrespective of this, this expert opinion represents intellectual property of IFVBESA as the contractor. The contractor is entitled to use this expert opinion for other purposes, if this does not violate the client's data protection and duty of confidentiality. Apart from this, this expert opinion, with the exception of the "authorized abridged version", may not be changed or passed on in abridged form without the consent of the IFVBESA. The order for this project refers to bioenergetically measurable values and their interpretation according to the guidelines of BESA or the IFVBESA. The maintenance of the quality of the tested products as well as their regular control are the task and responsibility of the client. Investigation of the manufacture, mechanism of action or interpretations of the Client's products to third parties are not the responsibility or task of the Contractor. Video recordings may only be made with the permission of IFVBESA.



## 1. basics of the research project

The international association for bioenergetic system analysis was commissioned by the company Leela Quantum Tech LLC to test or prove the effect of the test object "Leela Quantum Infinity Bloc" by means of dark field microscopy (or live blood analysis) and BESA in a long-term project. The entire P75 2.0 project was conducted as a double-blind/quantum-entangled study. The tests took place independently of the subjective feeling of the test persons.

### 1.1 Description of the test objects, "Leela Quantum Infinity Bloc" by the client:

A "Leela Quantum Infinity Bloc", like the Leela Quantum Bloc, is a tool and technology that contains or provides a concentrated quantum energy space in the space between the golden plates. Therefore, it can also be called a quantum energy generator or quantum space generator. It is the first device on the market that cannot be made better by using other available tools, devices or quantum energy generators. On the contrary, it can make any other device or product better because of its sophisticated energetic nature. The "Leela Quantum Infinity Bloc" is 6.5 times more powerful and faster in capacity than the Quantum Bloc.

### 1.2 What can the Leela Quantum Infinity Bloc do/what does it help with?

It is literally impossible to list all the areas that the "Leela Quantum Infinity Bloc" can support, optimize and/or help with. Here we list a few topics, all of which have been proven through testing, testimonials and third party studies:

- it can harmonize the energy in a house, a restaurant or a working area
- it creates an energetic feng shui for any room where it is placed
- harmonizes and neutralizes EMF (3G, 4G, 5G, WiFi, microwaves, etc.)
- it neutralizes negative frequencies
- it can neutralize harmful frequencies in water and snow caused by chemtrails and other environmental influences (e.g. aluminum, zinc and various alpha and beta radiation particles)
- any object into which the "Leela Quantum Infinity Bloc" fits can be charged with pure and dynamic quantum energy
- any frequency can be copied into any object that fits into the infinity bloc. However, we recommend the "Leela Quantum Infinity Bloc" for
- frequency transfers. Due to the enormous strength of the "Leela Quantum Infinity Bloc", it is not so well suited for frequency transfers, although frequency transfers are possible. However, they require special attention and some basic training to do so with a "Leela Quantum Infinity Bloc".



- one can structurally enhance and optimize any product that fits into an Infinity Bloc, e.g. water, other beverages, food, groceries, and even products like tennis rackets, water bottles, etc.
- one can create one's own quantum energy and/or frequency products for oneself, one's family and/or close friends
- one can support all plants, seedlings or trees in the house and/or garden with the energy of the "Leela Quantum Infinity Bloc". Furthermore, one can use the "Leela Quantum Infinity Bloc" to use the water to water the plants or even charge their pipes or hoses, etc.
- one can perform non-commercial quantum entanglement with a "Leela Quantum Infinity Bloc". With the "Leela Quantum Infinity Bloc" it is important that the energy is not charged or transferred for too long.
- and many more applications more...

The range of the "Leela Quantum Infinity Bloc" is about 1,000 meters in all directions.

### **1.3 Polarity**

In the "Leela Quantum Infinity Bloc" there is no polarity. Magnets add pressure, instability and a certain type of alignment to a quantum field, so the energy of a magnet supported quantum field is a "trapped" and almost confined energy force that cannot flow freely and is constantly fighting with the magnetic field. Energetically, the field must constantly recharge itself. The instability, disharmony and energetic pressure can be felt and "seen" in such devices, and they affect everything around them.

The "Leela Quantum Infinity Bloc" is a groundbreaking new quantum energy generator that provides not only a one-dimensional quantum field, but a truly multi-dimensional quantum space, and is also very powerful. It is also not bound in any way to the Earth's magnetic fields and can therefore be considered (and energetically looks like) a quantum sun, as it radiates and transmits freely in all directions without Earth-bound flux. The "Leela Quantum Infinity Bloc" is dynamic, harmonic, always stable, and retains these properties when quantum energy concentration and consciousness/perspective levels are increased (infinity block package). Although the use of a "Leela Quantum Infinity Bloc" involves some responsibility, it should be known that the energy is always balanced and harmonious.

### **1.4 Transmission of Frequencies**

Within just 10 seconds, any frequency can be copied and transferred to another object using the Leela Quantum Infinity Bloc. Literally any frequency can be copied. One can build their own library of different frequencies and/or copy a frequency of choice into an object. For example, one can copy the frequency of incense into a pendant or a t-shirt to benefit from the incense frequency while wearing the t-shirt or pendant. Another example would



be to choose a Leela Quantum frequency card and copy the frequency(s) into a watch, food, glass of water, jewelry, etc.

## 2. Project-design:

**General information about the overall project Project-P75 2.0:** This project was an exploratory project (in this case, refers to a methodological research approach that looks at research questions that have not been investigated before) that examined the harmonizing effect of the test object on the blood of 13 subjects. This project was randomized, using quantum entanglement and without placebo sham controlled/double blind. The results regarding the effect of the test object were even more significant than those of a pure double-blind study. The design of this project contained modern quantum physical elements and created new stimuli in the field of complementary medicine research. The blood of the subjects was examined under a dark field microscope as well as bioenergy informatively by means of BESA in order to assess the effect or possible changes compared to:

1. baseline (no exposure)
2. after a 15-minute exposure in the already mentioned and activated "Leela Quantum Infinity Bloc".

to check.

### 2.1 general research questions

1. does the blood change as observed under a dark field microscope after healthy human subjects are exposed to the frequency of the so-called "Leela Quantum Infinity Bloc" for 15 minutes over a distance of 7 - 8km (as the crow flies) in a quantum entangled manner?
2. Is the effect of the "Leela Quantum Infinity Bloc" via the process of quantum entanglement able to harmonize or improve a blood situation that may be detrimental to the health of the test subjects?

### 2.2 Research questions for this long-term project

3. does the blood change as observed under a dark field microscope after healthy human subjects are exposed to the field of the so-called "Leela Quantum Infinity Bloc" over a distance of 7 - 8km (as the crow flies) quantum entangled for several weeks?
4. is the effect of the "Leela Quantum Infinity Bloc" via the process of quantum entanglement able to achieve a more sustainable harmonization of the subject's health or blood situation through a longer and more intensive exposure?



### 3. research support services of the IFVBESA - dark field microscopy reference measurements

#### **3.1 Implementation of the applied method in general:**

Blood is the essence of life. Therefore, it has proven useful to examine living blood under a microscope to detect changes in response to stressors.

This project dealt specifically with the proof of effect of the test object "Leela Quantum Infinity Bloc" on 13 test persons.

The "Leela Quantum Infinity Bloc" was tested according to the request of the client within the framework of the applicable conditions of the IFVBESA for such projects. For the "Leela Quantum Infinity Bloc", this long-term project P75 2.0.2/LZ5 was intended to determine whether, through its long-term application, stresses from the environmental influences mentioned and, subsequently, disturbances, problems, blockages, disharmonies arising or existing in the blood of the test person can be harmonized, neutralized and thus negative pathological states can be replaced by positive states. This will be questioned in the following commissioned measurements of this project.

#### **3.2 Methodology of the applied procedure:**

Dark field microscopy is also referred to as "live blood analysis" because it involves examining a small drop of fresh capillary blood, preferably taken from the fingertip. This is observed under an optical microscope at magnifications of 100x to 1000x. A camera mounted on the microscope records digital photographs or videos of the blood samples, which reflect information about the ecology of the blood (biological terrain).

The size, shape, variability, and cellular integrity of the red blood cells (RBCs) are readily apparent, as are the stickiness and aggregation of the RBCs. The presence and relative number of white blood cells (leukocytes) are assessed, as is the motility (movement) of these cells. The blood plasma is further assessed for the relative levels of platelets (platelet aggregation), the formation of fibrin (< 10 minutes), the presence of microbial and parasitic as well as particles such as cholesterol, crystals and impurities.

For this project, a dark field microscope from the company "OPTICA" was used, which is equipped with the most modern technological features, a digital video camera system including a zoom lens. The camera system is connected to a computer monitor. The software is used to capture and store the photographs and the videos.

The blood sample is illuminated using light emitted through an optical system attached to the microscope condenser to keep the blood sample temperature stable. A drop of peripheral blood is taken from the fingertip with a sterile lancet and then immediately placed on a slide covered with a coverslip. For image optimization, oil immersion is used on the lenses of the microscope objective and on the darkfield condenser.



### **3.3 Subjects:**

The subjects were located at the Institute of the International Federation for Bioenergy Informative Systems Analysis, or IFVBESA. Dark field microscopy and BESA testing were also performed at this location. Subjects were instructed not to eat for at least 5 hours prior to dark field microscopy and to refrain from using their cell phones for at least 2 hours prior to each testing session. During the fasting period and test sessions, subjects drank only water. At each of the corresponding test sessions, the subjects were confronted with the activated test object, as already mentioned in the project design. At least 2 blood tests were performed on each subject, associated with the different exposure conditions described. Each blood sample was evaluated and analyzed for various morphological factors. These factors included the shape of red blood cells in terms of any distortion (membrane distortion); aggregation state of red blood cells, including clumping, money roll formation (cells stuck together into rolls), and stickiness; shape and motility of white blood cells; motility of white blood cells; and degree of early clotting factors, including platelet aggregates and presence of early fibrin.

For each subject, blood tests were performed as follows:

1. at the beginning, before exposure to the test object as a status or initial condition.
2. during the 15-minute exposure to the test object, the subjects were in confrontation with the test object about 8km away (as the crow flies) via quantum entanglement.

For this subject from the long-term project, the blood tests were performed as follows:

3. at the beginning, before exposure to the test object as a status or initial condition.
4. during intensive, alternating exposure to the test object for several weeks. The subjects were in confrontation with the test object about 8km away (as the crow flies) via quantum entanglement.

#### **General about the overall project:**

The test subjects did not know anything about the time of exposure by the test object, the subjects were only informed that a dark field microscopy by means of blood samples taken at different finger berries and times and two BESA tests would be performed. This means the subjects had no idea about a possible exposure of their body to a test object! It can be assumed that this project, by the use of a quantum entangled process alone, can be considered to be of higher significance than that of a regular, double-blinded and randomized study (no information to the test subjects about the exposure to the test object). At least four typical dark-field photographs and at least 1 dark-field video were obtained for the exposure conditions.

### **3.4 Research project description for the long-term project P756 2.0.2/LZ5:**

The reason for the tests for this detailed project P75 2.0.2/LZ5 is to prove the functionality of the "Leela Quantum Infinity Bloc" by test results, which are to be achieved by associating





and testing the subject in BEFORE dark field microscopies (baseline or status) and in AFTER dark field microscopies with the activated test object in the long term (as defined in the description). In AFTER microscopies, the process of so-called quantum entanglement is applied. For this process, a photograph taken immediately beforehand by the subjects is brought by an independent person to the location of the test object in Weyregg am Attersee, about 8km away, and inserted into the test object, the "Leela Infinity Block", for the duration of the exposure. The photograph is provided with date and time of activation. Via the morphogenetic field (quantum field) the photograph of the respective test person is connected to the physical original.

- The BEFORE dark field microscopies are performed without the "Leela Quantum Infinity Bloc"
- The AFTER dark field microscopies are performed via quantum entanglement with the "Leela Quantum Infinity Bloc"

**The question** for the AFTER dark field microscopy is: "Is the test object suitable and able to harmonize or neutralize the thus perceived stressful effects on the organism from the BEFORE dark field microscopy also via the process of quantum entanglement"?

The correspondingly designed tests are to provide information about this by comparing the BEFORE microscopy without the "Leela Quantum Infinity Bloc" with the test results of the AFTER microscopy to be carried out under the quantum-entangled application of the "Leela Quantum Infinity Bloc".

The intention of the client is to determine whether the test object, the "Leela Quantum Infinity Bloc", as noted in the product description, is suitable for harmonizing the disturbances, problems, blockages, disharmonies in the blood of the test subjects (biological object - animals) resulting from the BEFORE microscopy.

### **General information transmission of the test object**

The information transfer takes place from the hyperspace of the test object to the hyperspace of biological objects (humans, animals, plants). From there the information reaches the reference space or the energy space via so-called interaction channels from the background field. This is a union of, among others, all organs and energy forms in the biological object. There the information of the program can dynamically materialize and thus change current states. The changes can appear in the form of neutralization or harmonization of disturbances, dissolution of problems, blockages and disharmonies.

### General information transfer of the test object

The information transfer takes place from the hyperspace of the test object to the hyperspace of biological objects (humans, animals, plants). From there the information reaches the reference space or the energy space via so-called interaction channels from the background field. This is a union of, among others, all organs and energy forms in the biological object. There the information of the program can dynamically materialize and



thus change current states. The changes can show themselves in the form of neutralizations or harmonizations of disturbances, the dissolution of problems, blockages and disharmonies.

### **Conditions:**

Dark field microscopy/live blood analysis was performed in the premises of IFVBESA under laboratory conditions, at room temperature 20°Celsius, on natural wood floor. Basically, the testing possibility/ability was questioned among the subjects before the dark-field microscopies.

### **3.5 Test procedure - procedure and specifications for the implementation of the long-term project P75 2.0.2/LZ5 with this test person**

**BEFORE dark field microscopy** on the test person serves to determine the ACTUAL condition - baseline (no exposure) of the test person. The results are determined exactly according to the specifications of the IFVBESA and documented via the corresponding graphs.

**AFTER dark field microscopies** after a 15-minute exposure (unconscious contact of the test person with the test object) in the already mentioned and activated "Leela Quantum Infinity Bloc". The "Leela Quantum Infinity Bloc" is located during the dark field microscopies at a site about 8 km away in the village of Weyregg am Attersee. The exposure of the test persons to the test object takes place via the so-called quantum entanglement. As already mentioned under point 3.4, before the AFTER dark field microscopy, a photograph of the test person, provided with date and time, is taken to the location of the test object and placed in the "Leela Quantum Infinity Bloc" for 15 minutes. This means that the test person is unaware that his or her photograph is being placed in the "Leela Quantum Infinity Bloc" for energization. Following this process, the respective AFTER dark field microscopies are performed on the subject at the IFVBESA institute. The results are determined exactly according to the specifications of the IFVBESA and documented via the corresponding graphics.

**AFTER 2 dark field microscopies:** The subject was again confronted with the test object, the "Leela Quantum Infinity Bloc", 6 weeks after the last confrontation with the test object, which was on June 11, 2022, on July 28, 2022. From this time on, the test person was exposed (contact of the test person with the test object) to the already mentioned and activated "Leela Quantum Infinity Bloc" alternately for one hour every day, at an interval of 3 hours. The "Leela Quantum Infinity Bloc" is located at a site about 8 km away in the village of Weyregg am Attersee during the dark field microscopy procedures. The exposure of the subject to the test object takes place by means of a photograph (on HP photographic paper) via the so-called quantum entanglement. During the night the exposure of the subjects with the test object was suspended. On 15.08.2022 another AFTER 2 dark field microscopy was performed with the vital blood of the test subject. The results are



determined on page 13 according to the specifications of the IFVBESA and documented or interpreted via the known graphs.

**AFTER 3 dark field microscopy:** The process or procedure in contrast to the AFTER 2 dark field microscopy remains the same. Only the test person is permanently exposed to the test object, the "Leela Quantum Infinity Bloc", from 15.08.2022, with the exception of the night hours. Furthermore, the photograph was additionally supplemented with a geometry and a corresponding code for "neutralization of the blood". 3 days later, on 18.08.2022 the further AFTER 3 dark field microscopies were carried out. The results were determined on page 14 again exactly according to the specifications of the IFVBESA and documented or interpreted via the corresponding graphics.

## 4. results of the dark-field microscopy reference measurements

### Subject P5 - personal data

Date of birth: 2901/1957 – female, mother of 2 children, pensioner  
Vaccination status: natural, unvaccinated  
Constitution: family stress and multiple stresses, moderately vital and efficient, gets short of breath quickly when climbing stairs, falls asleep with difficulty and is a light sleeper, wakes up more often at night (02:00 to 03:00), sometimes the proband feels exhausted in the morning, is often nervous, suffers from anxiety, has had grief in the past, feels anger and resentment internally, Amalgam removal 1985 with flushing out  
Nutrition: change of diet towards whole foods and raw vegetables and living food, regular 1x daily enema, intermediate fasting, little meat, since short conscious renunciation of sugar, tries to live gluten-free.

8 dark field microscopies were performed. The first two BEFORE microscopies took place under exclusion of artificial, health-improving and/or falsifying methods, aids and the like. The 4 AFTER dark field microscopies took place under the same conditions, but with the addition of the test object "Leela Quantum Infinity Bloc" according to the project description by means of quantum entanglement.

### **BEFORE darkfield microscopy on 11.06.2022**

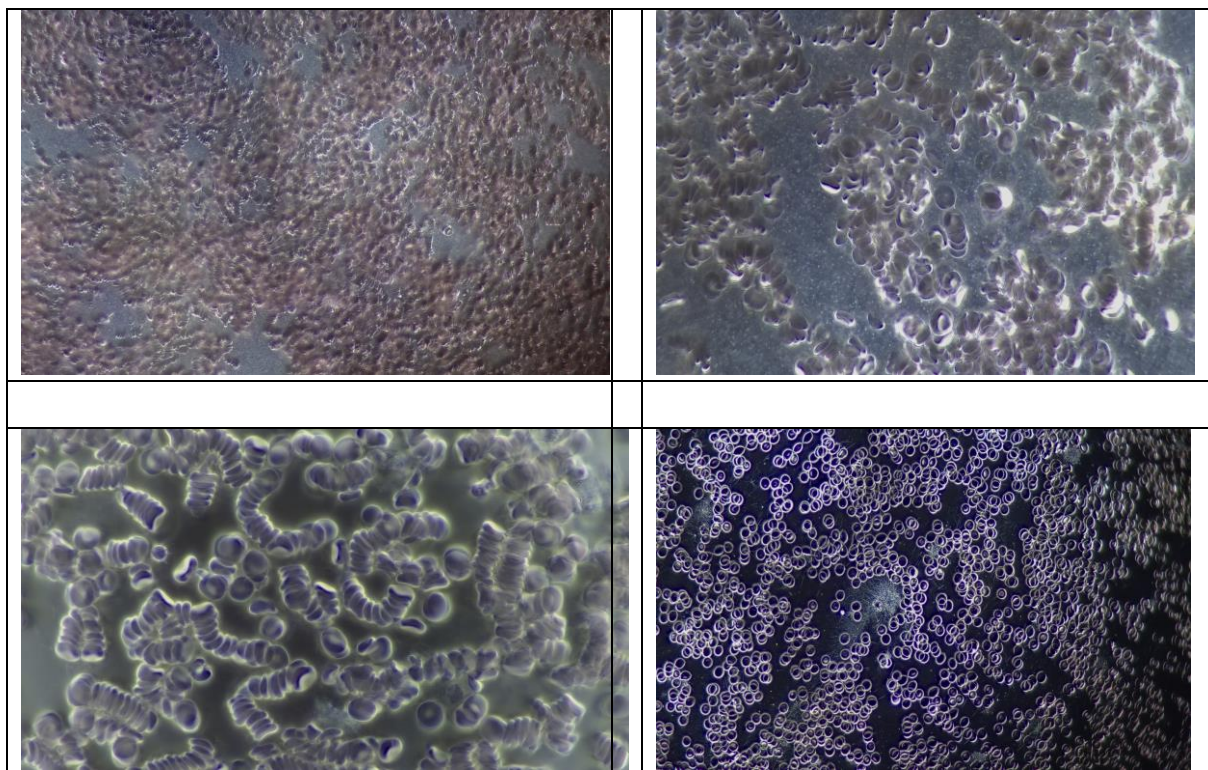
### **Abnormalities after the 1st darkfield microscopy / BEFORE the application of the test object**

#### Darkfield base:

Strong money roll formation, strongly pronounced microcytes - plasma corpuscles or symproites (snow flurries) with evidence of an inflammatory event or allergies, shadow cells (cell membrane weakness, vital substance deficiency, age phenomenon?), echinocytes (cogwheel cells) fluid electrolyte deficiency, phosphate deficiency, macrocytes, megalocytes, (B12 deficiency? ), Howell-Jolly corpuscles (poor filtering function or decreased function of



the spleen), bear paw - cells, (fat droplets, increased triglycerides), fibrin network (high oxidative loads-stress) as well as pronounced fibrin nests with partly fibrin symplasts, few granulocytes, lymphocytes and monocytes. Some lemon shaped erythrocytes indicate liver/spleen weakness (separating turbid and clear), sporadic bacterioids (cellular defense weakness), erythrocyte pairs (something gets to my kidneys, pair theme, theme stress hormones and sex hormones - adrenal glands and glucocorticoids). Target cells (fried egg cells) as seen in the picture 4, can be a sign of iron deficiency.



### **AFTER darkfield microscopy on 11.06.2022**

### **Abnormalities after the 2nd darkfield microscopy / AFTER the application of the test object**

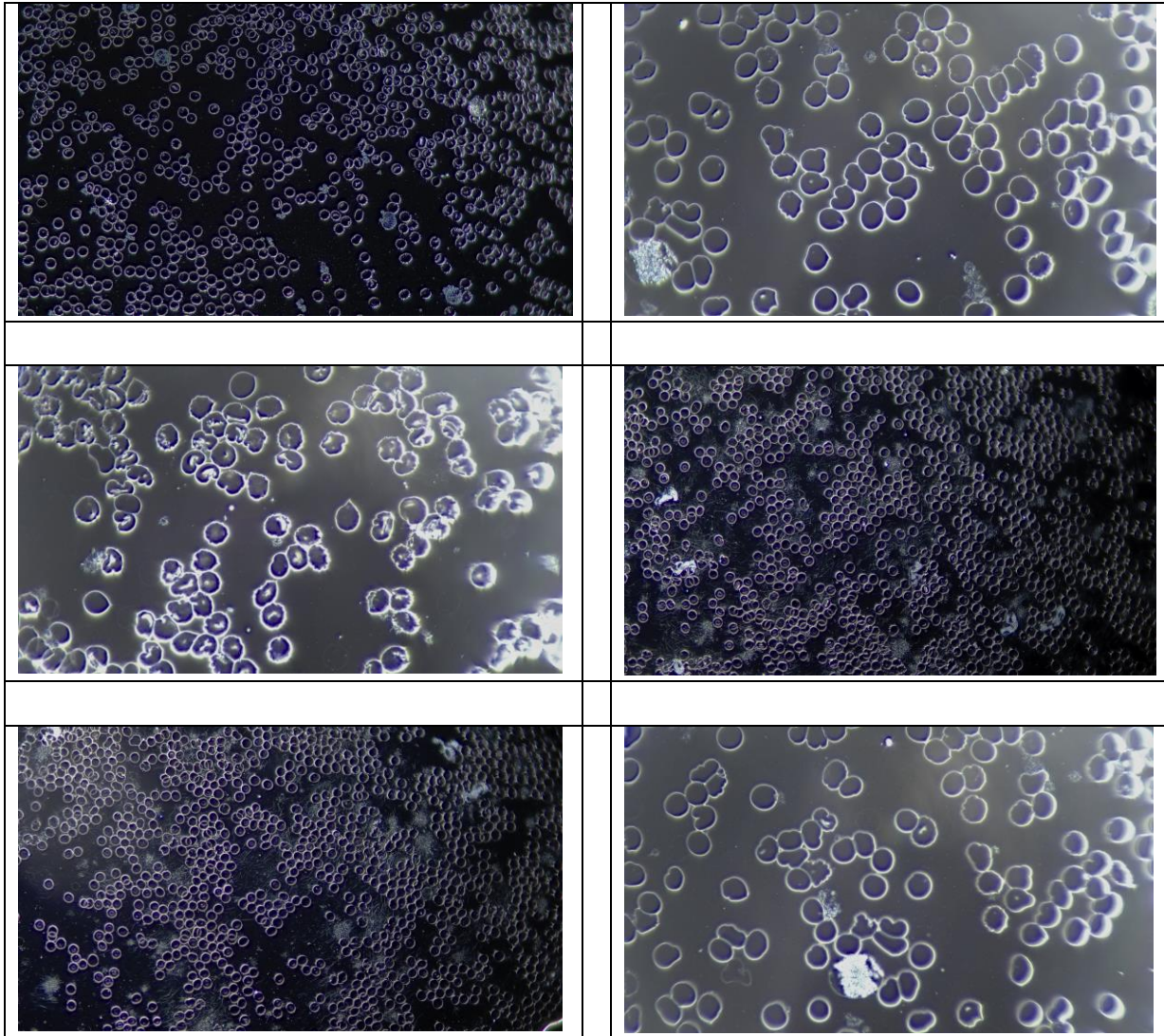
#### Dark field:

The strong money roll formation detected from the BEFORE microscopy, the strongly pronounced fibrin network (high oxidative load stress) showed to be mostly lifted. The pronounced fibrin nests with some fibrin symplasts were reduced or eliminated, as were the shadow cells. In addition, there are now more beautiful granulocytes, lymphocytes and monocytes, now again paired with a high but adequate proportion of plasma corpuscles (symproites), corresponding to a potential increase in the vitality of the blood. A few lemon-shaped erythrocytes still indicate splenic weakness (separating turbid and clear), sporadic bacterioids still show up (cellular defense weakness).

#### Specific blood diagnosis:



Increasingly, more active granulocytes and leukocytes are now apparent. Lemon erythrocytes (spleen/liver weakness) still indicate a slight microcytic anemia (possibly iron deficiency), testing of sleeping place stress, clarification of micronutrients (B12 and folic acid deficiency?)



### **AFTER 2-darkfield microscopy on 15.08.2022**

### **Abnormalities after the 3rd darkfield microscopy / AFTER the application of the test object**

#### Dark field:

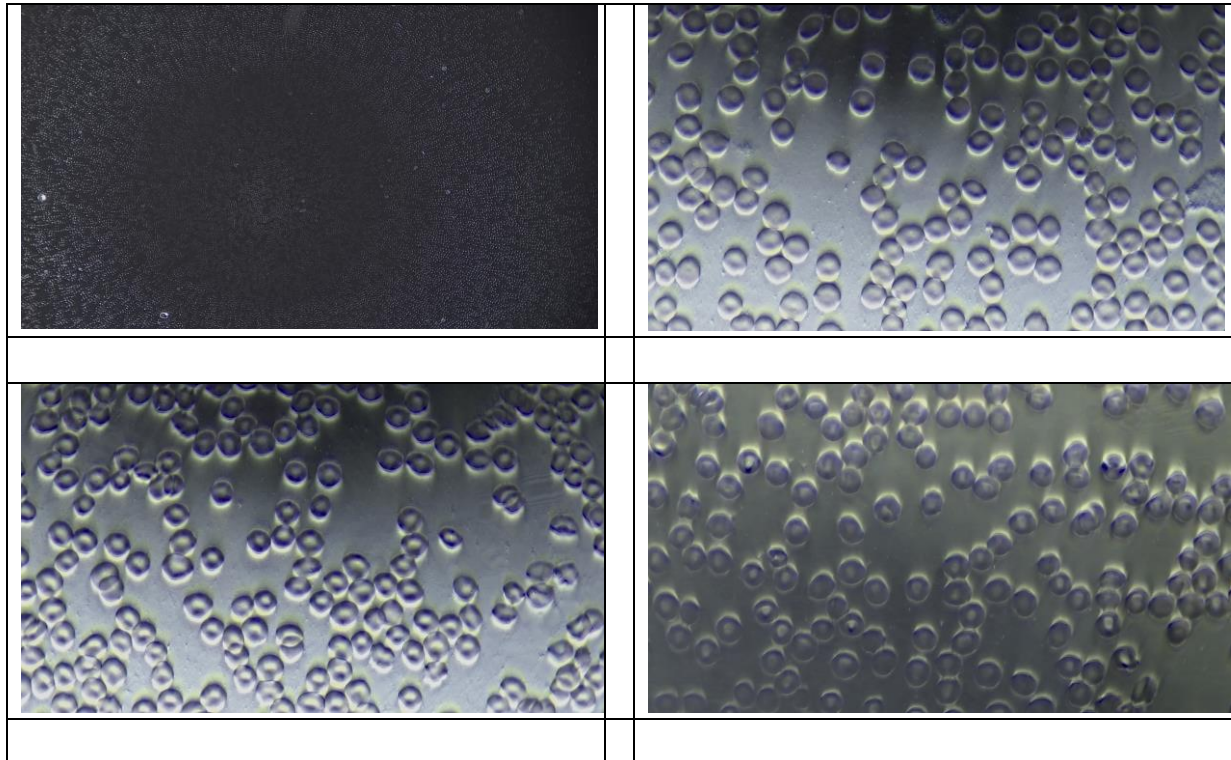
If the after 1 dark field microscopy showed the resolution of the slight money roll formation and agglutination of the erythrocytes, as well as the almost complete resolution of the lemon shape, the images of the 2nd AFTER microscopy showed more lemon shaped erythrocytes (see image 2 + 3), which still suggests an imbalance in liver metabolism. The still present elliptocytes or ovalocytes (erythrocytes in the shape of bear paws as in picture 2+3) still indicate an energy imbalance in the gastro-spleen-pancreas area. (Possibly a lack of



stability of fat & amino acids). In the videos, there is a very dynamic flow characteristic. As seen in images 4+5, only a few more shadow cells show up. The lagoon clumping and the erythrocyte pairs dissolved completely. Instead, target cells are shown on images 2+3+4, which still indicate iron deficiency.

Specific blood diagnosis:

With regard to the shadow cells, a possible vital substance deficiency would have to be verified.



**AFTER 3-darkfield microscopy on 18.08.2022**

**Abnormalities after the 4th dark field microscopy / AFTER the application of the test object**

Dark field:

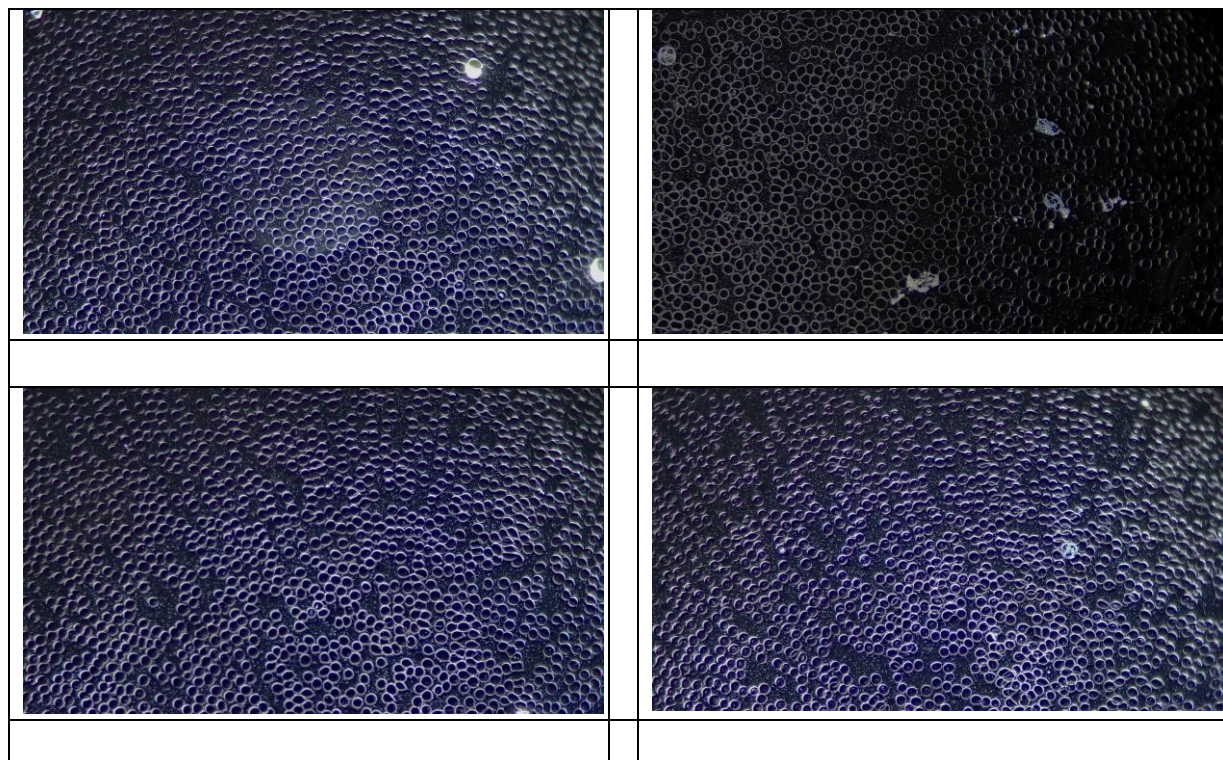
These images, 3 days after the previous AFTER 2 dark field microscopy show complete resolution of the lemon shape erythrocytes. Also, the images of the 2nd NACHHER 2 dark field microscopy showed more lemon-shaped erythrocytes (see Fig. 2 + 3), which means that the prolonged exposure of the subject to the test object indicates harmonization of liver metabolism. The dissolution of elliptocytes or ovalocytes (erythrocytes in the form of bear paws as in the picture 2+3 of the previous AFTER 2 dark field microscopy) could be an indication of the increase of energy information in the gastric-spleen-pancreas area. (Stabilization of fat & amino acid metabolism). In the videos one sees, as in the microscopies before also, again a very dynamic flow characteristic. Furthermore, no shadow cells are visible. Also, the target cells shown in images 2+3+4 of the AFTER 2 dark field microscopy



have completely dissolved. It seems as if the iron deficiency has dissolved due to the energization.

Specific blood diagnosis:

Since no shadow cells can be seen anymore, it can be assumed that the possible vital substance deficiency has also been harmonized. A more precise physical examination could provide information here.



## 5. general information about the test result

The human being, as well as all biological objects (also animals and plants) represents a kind of receiving antenna for environmental information. This is because life, especially of humans, animals and plants, depends fundamentally and exclusively on environmental information. Our organism is biologically very sensitive where natural information (fields) are located or where this natural information is subject to interactions and fluctuations. The situation is all the more dangerous when such fields of constructive structures are disturbed by various environmental stresses.

**For this reason, detected informative (electromagnetic) interference fields are are biologically highly relevant. Any reduction or transformation of these interference fields (ideally to 100 percent) is biologically very important, in some cases even vital.** These information loads from our, primarily artificial, environment are only compatible with life if they can be readjusted to a natural fluctuation tolerance. Disturbances, problems, blockades, disharmonies in the biological control circuit of biological objects, especially in animals, find their causes in such disturbing information influences.



**Neutralizing or harmonizing effects could be proven in this multi-week dark field microscopy project to determine the effect of the test object, the "Leela Quantum Infinity Bloc" on the test person. The "Leela Quantum Infinity Bloc" was able to neutralize the biologically detrimental effects and effects of the stress factors tested on the test person. The significant ability of the "Leela Quantum Infinity Bloc" to neutralize and harmonize the stress factors tested in this detailed project P75 2.0.2/LZ5, which lasted several weeks, is hereby demonstrated. The transformation of the tested information into bio-energy information with biological and life-promoting goodness is proven with this project.**

## 6. authorized summary

The dark field microscopy performed by IFVBESA on the physical effectiveness of the test object, the "Leela Quantum Infinity Bloc", has clearly shown that this test object is able to harmonize biologically significant stress factors in the living blood of the test person in a significant way. This is also confirmed by the BESA tests carried out in parallel in this long-term detailed project P75 2.0.2/LZ5 (see also project P75 2.1). By means of dark field microscopy, the effect of the above mentioned stress factors on the test person and his living blood as well as his biological control circuits was questioned and tested on the physical level. The BEFORE - AFTER dark field microscopies with the live blood show significant changes. The images of the dark field microscopy impressively confirm on the one hand the stresses on the human organism caused by the tested factors, and on the other hand clarify how the living blood changes into more vital or body-immanent and biocompatible values after application of the "Leela Quantum Infinity Bloc".

From a holistic point of view, it may be assumed that the positive effect on the test person is also felt by other test persons. That the positive influence by the "Leela Quantum Infinity Bloc" is actually possible with high precision is clearly shown by this project with its BEFORE-AFTER comparisons on this test person in this long-term project. The images of the dark field microscopy show for the most part significantly improved blood properties. A regulative regulation dynamic has taken place. In the sense of IFVBESA, one can clearly speak of a significant change of the body's own blood in the direction of vitality.

### Result

In the VORHER blood tests, the proband exhibits a deregulated blood situation or a stressful condition. The proband showed blood parameters that deviated strongly from the norm in some cases, which could be illustrated very nicely via the microphotographs of the blood. The anamnesis shows that stress, electromagnetic interference fields (EMSF), environmental pollution, denatured nutrition or certain stressful life circumstances etc. also have an influence on the blood and the salutogenesis of the proband.

In the AFTER - microscopy, the subject was quantum entangled over a distance of about 8 km (as the crow flies). In contrast to the BEFORE microscopy, in which the test object, the "Leela Quantum Infinity Bloc" was not used, significant changes in the blood were





consistently found, indicating that vitalization of the blood had taken place. The regulatory dynamics developed into a regulatory effective range.

In this project as a "quantum entangled double-blind study" the proof of the effectiveness of the test object, the "Leela Quantum Infinity Bloc" towards the tested subjects was provided. Thus, the requirements for the receipt of a BESA seal of approval by the International Professional Association for BESA were confirmed.

## 7. general discussion on study design

### **Key findings from blood cell apoptosis:**

Apoptosis of blood cells is the transition of the cell from this world to the next, programmed by life, characterized or controlled by signaling pathways, otherwise known as cell death. In the case of blood cells, one also speaks of extrinsic apoptosis, artificially induced cell death by blood withdrawal from the outside.

Every time blood is drawn, millions of blood cells are removed and ultimately undergo apoptosis because they are no longer returned to the systemic circulation.

What few people are aware of is the fact that from this process of apoptosis, which can last up to 21 days, the therapist can extract the most important and target-oriented information from the blood in diagnostic terms. For it is in this phase of apoptosis that the true vitality of the blood cells is revealed. In particular, the erythrocytes or lymphocytes (immune system) are meant.

Therefore, it would be advisable to focus the diagnosis on exactly this process in order to be able to make appropriate statements about revitalization of the blood cells.

This would lead to the following questions of a before and after observation:

- Can the apoptosis of the blood cells be fundamentally changed or postponed?
- What changed behavior can be observed in particular in the leukocytes and the lymphocytes?
- In which way can the milieu be adapted by the test object?
- What conclusions can be drawn from the application of the test object to the possible stress factors?
- uvm what can be deduced from the actual observation.

The challenges of such an analysis clearly lie, on the one hand, in a certain amount of time. On the other hand in the extensive of the single phases of apoptosis. One may imagine that in each temporal phase of apoptosis an exact interpretation (photo, video and description of the observation) of the decay process of the blood cells is required.

But the temporal effort would be worthwhile in any case. Because it is exactly from this process that it is possible to combine the existing qualitative statements of the living blood by the findings from the process of apoptosis to a general diagnosis.



Internationaler Fachverband für BESA | ZVR Nr. 975047937  
Hauptstraße 1, A 4861 Kammer-Schörfling am Attersee | AUSTRIA  
Tel.: 0043 - (0)664-73152899 | E- MAIL: [info@ifvbesa.at](mailto:info@ifvbesa.at)

This is about much more than just observing cell death. Here it is about the understanding of what shows up in the 3-dimensional space and to what extent it is possible, by the statements of the quantum philosophy (test object), to take real influence on the viability of the blood cells. Under the aspect of the holistic doctrine can be said here also, as in the inside so in the outside. This process is even about the understanding of the plan of creation. We speak here of the often described so-called transition from the gross material world into the fine material world. Here we move absolutely on the ridge, in the area of the interaction channels into the quantum field. As in the small, so in the big, as in the blood, so in the human being.