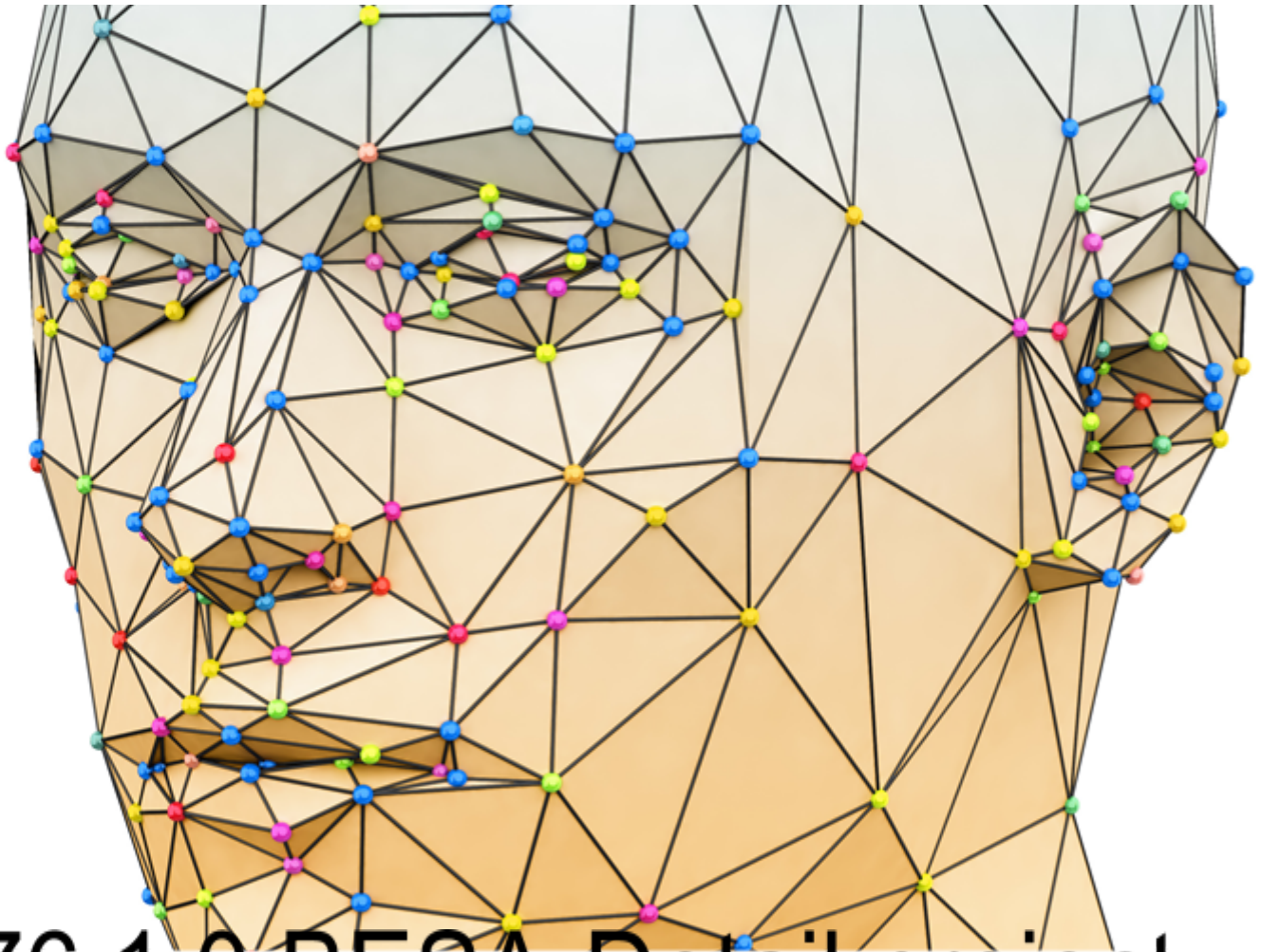




Internationaler Fachverband für BESA | ZVR Nr. 975047937
Hauptstraße 1, A 4861 Kammer-Schörfling am Attersee |
Österreich/Austria | Tel.: +43/664/73152899 | E-Mail: info@ifvbesa.at

IFVBESA

Information is crucial



P76 1.0 BESA-Detail project

Subject 1

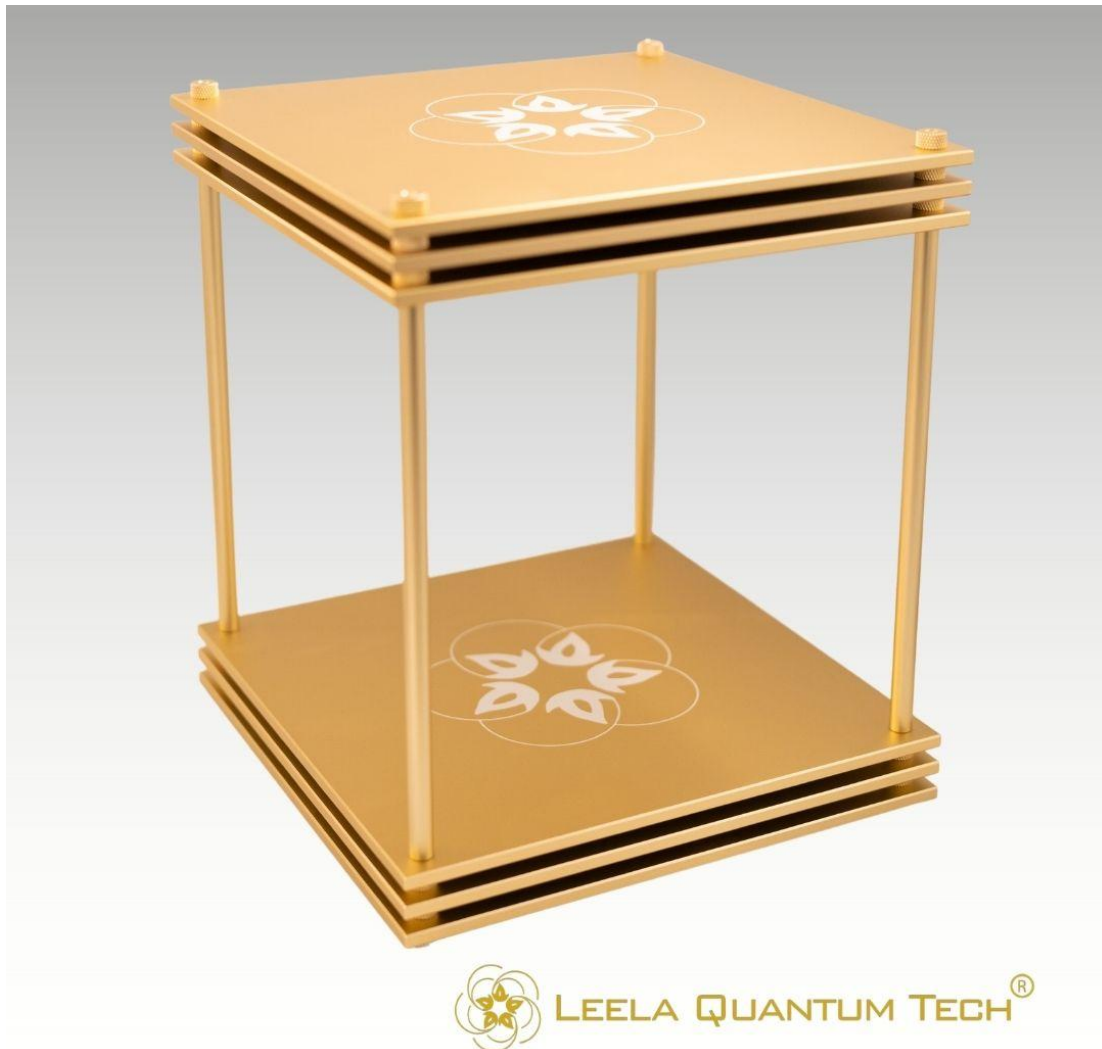
EMF in the electric vehicle - quantum entangled

Leela Quantum Infinity Bloc



Project P76 1.0 to BESA-expert opinion

Bioenergy informative system analysis within the framework of the BESA seal of approval about the effectiveness of the "Leela Quantum Infinity Bloc" product of the company Leela Quantum Tech, LLC at EMF in the electric vehicle, quantum entangled also referred to as "test object" in the expert report.





Client

company Leela Quantum Tech, LLC
Attn: Eleonora Goldenberg
1421 LUISA STREET, STE G
SANTA FE, NM 87505
USA

Project participants and responsible persons:

Project leader: Wolfgang Hans Albrecht, President, and Scientific Director of IFVBESA
Assistant and test person: Eva Schmidt, Vice President, and Deputy Scientific Director of IFVBESA
Test person: 3 anonymous test persons as well as 1 test person as the electric vehicle itself in the project P76.0

The detailed project P76 is divided as follows:

Detail project P76 1.0: **Subject 1: in EMF (electromagnetic interference fields) quantum entangled in the electric vehicle. The proband is female (pensioner).**

Detail project P76 1.1: Subject 2: with EMF (electromagnetic interference fields) in the electric vehicle. The proband is male (at the age of 37).

Detail project P76 2.0: Subject 3: at EMF (electromagnetic interference fields) live in the luxury class electric vehicle. The proband is female and aged 62 years.

Detail project P76 2.1: Subject 4: Test person 4: this test person is a luxury class electric vehicle. Subjects of the tests are the EMF (electromagnetic interference fields) of this car in itself.

other participants: none



Internationaler Fachverband für BESA | ZVR Nr. 975047937
Hauptstraße 1, A 4861 Kammer-Schörfling am Attersee |
Österreich/Austria | Tel.: +43/664/73152899 | E-Mail: info@ifvbesa.at

Project location: Location of the IFVBESA (field test according to detailed information) main street 1, A 4861 Kammer/Schörfling

Date: 21.02.2023 to 23.02.2023

Project duration: 3 days

Content

BESA legend for interpretation of BESA measurement results	5	
Basics of the research project creation P76 1.0	6	
Research funding services of the IFVBESA	BESA- reference tests	8
Research Project Description	9	
Test procedure	11	
General information about the test result	29	
Authorized Summary	29	

Important notes:

The client has the right to use this expert opinion. Irrespective of this, this expert opinion represents the intellectual property of IFVBESA as the contractor. The contractor is entitled to use this expert opinion for other purposes if this does not violate the client's data protection and confidentiality obligations. Apart from this, this expert opinion, with the exception of the "authorized abridged version", may not be changed or passed on in abridged form without the consent of the IFVBESA. The order for this project refers to bioenergetically measurable values and their interpretation according



to the guidelines of BESA or the IFVBESA. The maintenance of the quality of the tested products as well as their regular control is the task and responsibility of the client. Investigation of the manufacture, mechanism of action, or interpretation of the Client's products to third parties is not the responsibility or task of the Contractor. Video recordings may only be made with the permission of IFVBESA.

BESA legend for interpretation of BESA measurement results

The measured value of 50 at the tested meridian represents an optimal energetic state in this organ or its higher levels.

Also measured values in the range of 50 to max. 70 still count as a neutral and balanced energetic status. The organism is able to regulate irritations of the system (wrong environmental signals) very well.

Measured values above 70 to 100 represent the inflammatory range or a so-called energy surplus as a reaction to the irritations of the system by corresponding environmental signals. After reaching the maximum values, the energy state tips into the degenerative (blue) range.

Measured values from below 50 to around 0 represent the so-called degenerative measuring range or a lack of energy as a reaction to the stimulation of the system by corresponding environmental signals.

Measured values represented by a so-called pointer drop of more than 3 scale lines indicate total deregulation.

The influence of certain environmental signals then leads to such strong system overloads, which can only be harmonized by corresponding new signals.

The orange measured values represent a resonance of the tested substances (electronic honeycomb contents) in the respective called bioenergy-informative control circuits as well as in its subordinate or superordinate structures.

BESA key figures:

up 0,79	very deep energetic regulation disorder (SSD) energy deficiency
0,8 to 1,19	strong energetic regulation disorder (SD) degeneration/lack of energy
1,2 to 1,59	energetic regulation disorder (D) degeneration/energy deficiency
1,6 to 1,99	degenerative transition (DÜ)
2,0 to 2,39	optimal regulation (OR)
2,4 to 2,79	in the regulation (R)
2,8 to 3,19	partial inflammation = regional energy excess (PE)
from 3,2	total inflammation = strong general energy surplus (TE)



Basics of the research project creation P76 1.0

The international association for bioenergetic system analysis was commissioned by the company Leela Quantum Tech, LLC to test or prove the effect of the test object "Leela Quantum Infinity Bloc" in the presence of electromagnetic interference fields (EMF) in the electric vehicle (E-Car) towards test persons by means of bioenergy informative system analysis (BESA). The testing took place independently of the subjective perception of the test persons:

Description of the test objects, "Leela Quantum Infinity Bloc" by the client:

A "Leela Quantum Infinity Bloc", like the Leela Quantum Bloc, is a tool and technology that contains or provides a concentrated quantum energy space in the space between the golden plates. Therefore, it can also be called a quantum energy generator or quantum space generator. It is the first device on the market that cannot be made better by using other available tools, devices, or quantum energy generators. On the contrary, it can make any other device or product better because of its sophisticated energetic nature. The "Leela Quantum Infinity Bloc" is 6.5 times more powerful and faster in capacity than the Quantum Bloc.

What can the Infinity Bloc do/what does it help with?

It is literally impossible to list all the areas that the "Leela Quantum Infinity Bloc" can support, optimize, and/or help with. Here we list a few topics, all of which have been proven through testing, testimonials, and third-party studies:

- charging any object with comprehensive, positive quantum energy.
- for clarification: energies are always neutral. By "positive", the client wants to refer to the positively affecting energy of the objects in the room, such as people, animals, plants, etc..
- copy any frequencies within only 1 minute
- harmonizing energy field for home, workplace, car, etc.
- harmonization of any negative frequencies
- helps to dive deeper into one's own consciousness (whether in meditation, in daily life, "retrieving" information, etc.)
- it can harmonize the energy in a house, a restaurant or a workspace
- it creates an energetic feng shui for any room in which it is placed
- it harmonizes and neutralizes EMF (3G, 4G, 5G, WiFi, microwaves, etc.)



- it neutralizes negative frequencies
- it can neutralize harmful frequencies in water and snow caused by chemtrails and other environmental factors (e.g. aluminum, zinc and various alpha and beta radiation particles)
- any object that the "Leela Quantum Infinity Bloc" fits into can be charged with pure and dynamic quantum energy
- any frequency can be copied into any object that fits the infinity bloc. However, we recommend the "Leela Quantum Infinity Bloc" for frequency transfers. Due to the enormous strength of the "Leela Quantum Infinity Bloc", it is not so well suited for frequency transfers, although frequency transfers are possible. However, they require special attention and some basic training to do so with a "Leela Quantum Infinity Bloc".
- one can structurally enhance and optimize any product that fits into an Infinity Bloc, e.g., water, other beverages, food, groceries, and even products such as tennis rackets, water bottles, etc.
- one can make one's own quantum energy, and/or frequency products for oneself, one's family and/or close friends
- one can support all plants, seedlings or trees in the house and/or garden with the energy of the "Leela Quantum Infinity Bloc". In addition, one can use the "Leela Quantum Infinity Bloc" to use the water to water the plants or even charge their pipes or hoses, etc.
- one can use a "Leela Quantum Infinity Bloc" to perform non-commercial quantum entanglement. It is important with the "Leela Quantum Infinity Bloc" that the energy is not charged or transferred for too long.
- and many more applications...

The **range of the first** "Leela Quantum Infinity Bloc" is about 1,000 meters in all directions.

Polarity

There is no polarity in the "Leela Quantum Infinity Bloc". Magnets add pressure, instability, and a certain type of alignment to a quantum field, so the energy of a magnet-supported quantum field is a "trapped" and almost confined energy force that cannot flow freely and is constantly fighting with the magnetic field. Energetically, the field must constantly recharge itself. The instability, disharmony, and energetic pressure can be felt and "seen" in such devices, and they affect everything around them.

The "Leela Quantum Infinity Bloc" is a groundbreaking new quantum energy generator that provides not only a one-dimensional quantum field, but a truly multi-dimensional quantum space, and is also very powerful. It is also not bound in any way to the Earth's magnetic fields and can therefore be considered (and energetically looks like) a quantum sun, as it radiates



and transmits freely in all directions without Earth-bound flux. The "Leela Quantum Infinity Bloc" is dynamic, harmonic, always stable, and retains these properties when quantum energy concentration and consciousness/perspective levels are increased (infinity block package). Although using a "Leela Quantum Infinity Bloc" comes with some responsibility, it should be known that the energy is always balanced and harmonious.

Transmission of Frequencies

Within just 10 seconds, any frequency can be copied and transferred to another object using the Leela Infinity Bloc. Literally, any frequency can be copied. One can build their own library of different frequencies and/or copy a frequency of choice into an object. For example, one can copy the frequency of incense into a pendant or a t-shirt to benefit from the incense frequency while wearing the t-shirt or pendant. Another example would be to choose a Leela Quantum frequency card and copy the frequency(s) into a watch, food, glass of water, jewelry, etc.

Animals also benefit from the "Leela Quantum Infinity Bloc"

Not only humans benefit from the positive effects of quantum energy. Animals can also sense the frequencies and use them very well for themselves, as long as they are tuned to their needs.

These indications should be an interpretation of the extent of the effect of the test object and an indication of its holistic, i.e. holistic, orientation. The effect of the Leela Quantum Infinity Bloc" can thus be well achieved for the animals.

Research funding services of the IFVBESA

BESA- reference tests

The project P76 1.0 deals specifically with the proof of effect of the "Leela Quantum Infinity Bloc" in the presence of electromagnetic interference fields or electrosmog (EMF for short) in the passenger compartment or the direct environment of an e-car of the upper middle class.

What are EMF:

These include artificial electromagnetic radiation from, among other things, magnetic fields from electrical components in the e-car, 3G, 4G, and 5G technologies, WLAN and WLAN routers, Bluetooth, GPS, cordless phones, monitors, and various transmission masts or towers that act on the test subjects in the passenger compartment from the outside. The aim is to test whether the "Leela Quantum Infinity Bloc" can neutralize the possible negative perception of the EMF in the e-car or their possibly perceived disturbing effect on the organism.

The "Leela Quantum Infinity Bloc" was tested according to the request of the client within the framework of the applicable conditions of the IFVBESA for the award of quality seals. In



principle, seals of approval are awarded in three categories depending on the significance of the test results, taking into account all the tests of a project.

For the "Leela Quantum Infinity Bloc," it was to be determined whether through its application possible burdens from EMF and as a consequence existing disturbances, problems, blockades, and disharmonies in the energy system of the test person (biological system) can be harmonized, neutralized and thus negative pathological states can be replaced by positive states. This was questioned in the following commissioned tests of this project.

General information transmission of the test object

The information transfer takes place from the hyperspace of the test object to the hyperspace of biological objects (humans, animals, plants). From there the information reaches the reference space or the energy space via so-called interaction channels. This is a union of, among other things, all organs and energy forms in the biological object. There, the information of the program can dynamically materialize and thus change current states. The changes can appear in the form of neutralization or harmonization of disturbances, dissolution of problems, blockages, and disharmonies.

Research Project Description

The reason for the test was to prove the functionality of the "Leela Quantum Infinity Bloc" through test results obtained by confronting subjects with precisely selected EMF-carrying objects in the electric vehicle to significantly demonstrate and compare their responses without the "Leela Quantum Infinity Bloc" and with the "Leela Quantum Infinity Bloc". Subjects were contacted, i.e., associated, with precisely predetermined EMFs in BEFORE measurements and AFTER measurements in the electric vehicle.

- The BEFORE measurements were made without the "Leela Quantum Infinity Bloc"
- The AFTER measurements were made with the "Leela Quantum Infinity Bloc"

The question for each AFTER measurement was: "Is the "Leela Quantum Infinity Bloc" suitable and able to harmonize or neutralize the possibly perceived stressful negative effects of EMF in the electric vehicle on the organism?"

The correspondingly designed tests were to provide information about this by comparing the preliminary measurements without the "Leela Quantum Bloc" with the test results of the follow-up measurements carried out using the "Leela Quantum Infinity Bloc". For this purpose, the following situational positions were presented:

Position 1: A photograph was taken of both subjects 1 and 2 outside the electric vehicle.
(BESA-Basic)



- Position 2: Both subjects 1 and 2 were driving in the electric vehicle. After 5 minutes, a photograph was taken of both subjects 1 and 2 inside the electric vehicle (BESA-subject 1 and 2 driving in the electric vehicle)
- Position 3: Both subjects 1 and 2 driving in the electric vehicle. After another 5 minutes, a photograph was taken of both subjects 1 and 2 in the electric vehicle while they were talking on the phone. (BESA-subject 1 and 2 driving in the electric vehicle and talking on the phone at the same time).
- Position 4: Both subjects 1 and 2 are driving in the electric vehicle, the Infinity Bloc is now in the passenger compartment of the electric vehicle on the back seat. After 5 minutes, a photograph was taken of both subjects 1 and 2 in the electric vehicle. (BESA subjects 1 and 2 driving in the electric vehicle and Leela Quantum Infinity Bloc).
- Position 5: Both subjects 1 and 2 driving in the electric vehicle, the Infinity Bloc is still in the passenger compartment of the E-Car on the back seat. After another 5 minutes, a photograph was taken of both subjects 1 and 2 in the electric vehicle while they were talking on the phone. (BESA subjects 1 and 2 driving in the electric vehicle and talking on the phone at the same time and Leela Quantum Infinity Bloc).

The aim of the development team was to determine whether the test object, the "Leela Quantum Infinity Bloc", as noted in the product description, is suitable for harmonizing or neutralizing the stresses or deregulations in the meridian system of the test subjects that may result from EMF.

Conditions:

The BESA tests were performed quantum entangled over the corresponding photographs in the premises of IFVBESA under laboratory conditions, at room temperature 20°Celsius, on a natural wood floor.

What does quantum entangled mean:

Quantum entanglement is a quantum mechanical phenomenon. Here, two or more entangled particles can no longer be described as individual particles with defined states, but only the overall system as such. This means that the photograph forms an indelible,-energy-informative image of the representation located in the photograph (i.e. an energy-informative space). The photographs were tested or evaluated in the laboratory of IFVBESA by means of a surrogate BESA.

That means, all following BESA tests of the project from the E-Car, which were recorded by means of photographs, took place afterward under the laboratory conditions of the IFVBESA already mentioned above.

What does surrogate mean:

This is a substitute person who stands in for the respective test person.

To the electric vehicle,



The e-car is an e-vehicle, year of manufacture 2019, with full equipment, 35.8 KWh battery power, incl. Bluetooth, navigation system, and various components operated by electric motors such as seat adjustment, Klimatronic, window lifters, and sunroof. In addition, there was general permanent radiation exposure in road traffic (3G, 4G, 5G) due to corresponding transmission masts.

Pos.1: BESA 1, tests BASIC (bioenergetic status) on test persons 1 and 2 in the laboratory

Pos.2: BESA 2, tests during the confrontation of test persons 1 and 2 with EMF by the electric vehicle in driving operation.

Pos.3: BESA 3, tests when subjects 1 and 2 are confronted with EMF by the electric vehicle being in driving mode while subjects 1 and 2 are talking on the phone at the same time.

Pos.4: BESA 4, tests with the confrontation of test persons 1 and 2 with EMF by the electric vehicle in driving mode and simultaneous application of the test object, the Leela Quantum Infinity Bloc.

Pos.5: BESA 5, tests when subjects 1 and 2 are confronted with EMF by the electric vehicle in operation while subjects 1 and 2 are simultaneously on the phone and using the test object, the Leela Quantum Infinity Bloc, at the same time.

Pos 6: Evaluation of the results in the detailed project as well as a summary in a corresponding expert opinion according to the sample

Procedure and specifications for implementation:

1. **BESA baseline measurement** of the subjects at all previously determined measurement points (TING points) serve to determine the actual condition. The results were determined exactly according to the BESA specifications and documented via the known BESA graphs.
2. **Test subjects 1 and 2** were brought into contact with the **EMF-carrying objects from the electric vehicle** depending on the project, whereby the sequence discussed with the client is considered as specifications and is adhered to accordingly. In order to be able to determine the current energy state, all measurement points (TING points) were measured in the same order and for the same duration for each test of objects with EMF (electromagnetic interference fields) (as indicated in item 1). The results were again determined exactly according to the BESA specifications and documented via the known BESA graphs.
3. **Activation** of the test object
 - 3.1 When activating the "Leela Quantum Infinity Bloc", it was indirectly brought into the measurement area according to the client's instructions, i.e. confronted with subjects 1 and 2.
The subjects were contacted by the EMF-carrying objects. In this BESA test, the same measuring points (as mentioned above) and in the same order and time duration



were measured (see point 1) to determine the current energy state. The results are documented exactly according to the known BESA specifications.

Test procedure

BESA 1 testing BASIC BEFORE as status:

In the first step, basic bioenergetic testing (bioenergetic status) was performed on the meridian endpoints (TING points) of the subjects.

BESA 2 Test BASIC BEFORE with EMF-carrying objects in the moving electric vehicle

In the further BESA test procedure, the EMF-carrying objects (e.g. magnetic fields of the electrical components as well as EMF from WLAN, smartphone, Bluetooth) in the electric vehicle were tested on the respective subjects. The questions were: How does the meridian system of the test subjects react? How does the energetic status change when confronted with the EMF? What are the differences in each case compared to the previous BESA BASIC testing BEFORE?

BESA 3 testing BEFORE with EMF-carrying objects in the moving electric vehicle including simultaneous telephone calls

In the further course of the BESA test, in addition to the conditions listed above, 2 smartphones were activated or phone calls were made with them while driving in order to record the reaction of these additional EMF on the meridian system of the subjects. The questions were again: How does the meridian system of the test persons react? How does the energetic status of the subjects change when confronted with the EMF? What differences arise in each case compared to the previous BESA 2 testing BEFORE?

BESA 4 testing AFTER with the "Leela Quantum Infinity Bloc" in combination with EMF leading objects in the moving electric vehicle

In the further BESA testing process, the Leela Quantum Infinity Bloc was added to the conditions listed above from BESA 3 testing.

The questions were again: How does the meridian system of the test persons react? How does the energy-informative status of the test subjects change within the moving electric vehicle when the test subjects are simultaneously confronted with the test object? What differences arise in each case compared to the previous BESA 2 and 3 testing BEFORE?

BESA 5 testing AFTER with the "Leela Quantum Infinity Bloc" in combination with EMF leading objects inside the driving electric vehicle and simultaneous phone calls.

In the further BESA testing process, in addition to the conditions listed above from BESA 4 testing, 2 phone calls were made and the Leela Quantum Infinity Bloc was added.

The questions were again: How does the meridian system of the test persons react? How does the energy-informative status of the test persons change inside the moving electric



vehicle when both test persons are on the phone at the same time and when the test persons are confronted with the test object at the same time? What differences arise in each case compared to the previous BESA 2, 3, and 4 testing BEFORE??

Proband 1

BESA 1 Test BASIC BEFORE

BESA 1 test BASIC BEFORE as a Status on Proband 1

Eva Schmidt performs BESA basic testing outside the electric vehicle on subject 1. All BESA tests are performed at the TING points (40 nail fold points on the fingers and toes).

Goal: To establish a baseline test (status) as a representation of the energy informative baseline situation for all further BESA tests.

BESA test evaluation P76 1.0
from **21-02-2023 at 11:24 - 11:29** (5 minutes) page 14 and 15

Result: The measured values indicated a slightly degenerative, but balanced picture at the organs or organ systems measured via the meridian endpoints (acupuncture points). The measured values on the energy system of the test person indicate a relatively vital overall situation.

52 % in the blue area

47 % in the green area

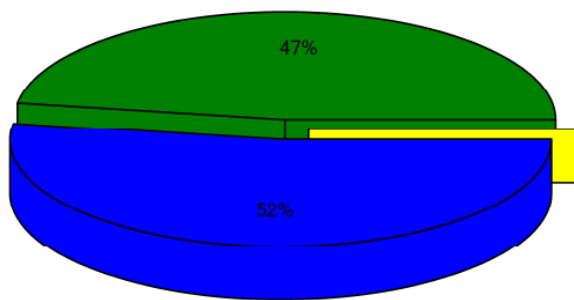
01 % in the yellow transition area

Conclusion: As the BESA graphs and the pie chart shows, almost 50% of the measurement results were in the green range. 52% of the measured values were, for the most part, only just in the blue, degenerative range. This corresponds, in relation to the respective organs tested, to a weak energy deficiency.

This means that the test person is in a good energy-informative overall condition.



Overview of BESA measuring



- Red:** values with indicator decline
Decline greater than 2 (%)
- Yellow:** high values without indicator decline
Values over 70 (%)
- Blue:** low values
Values lower 50 (52%)
- Green:** standard values
Values between 50 and 70 (47%)



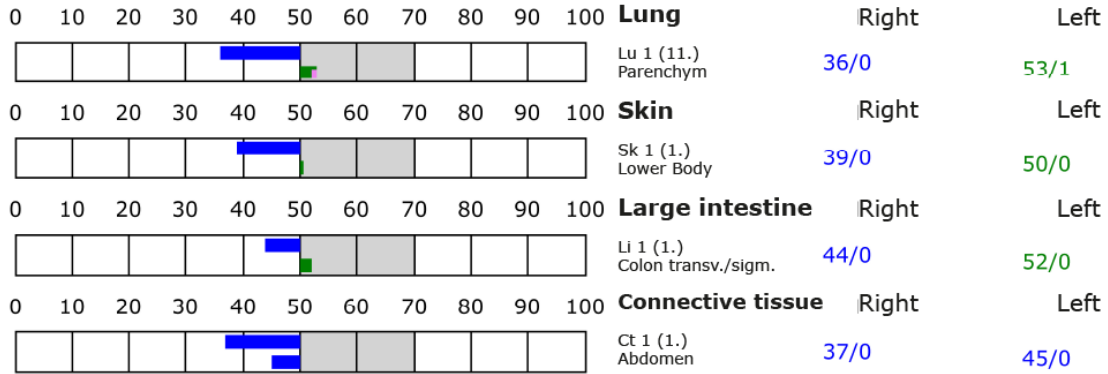
BESA basic test

+++ : Indicator decline > 15 Skt.
 ++ : Indicator decline 6-15 Skt.
 + : Indicator decline 3-5 Skt.

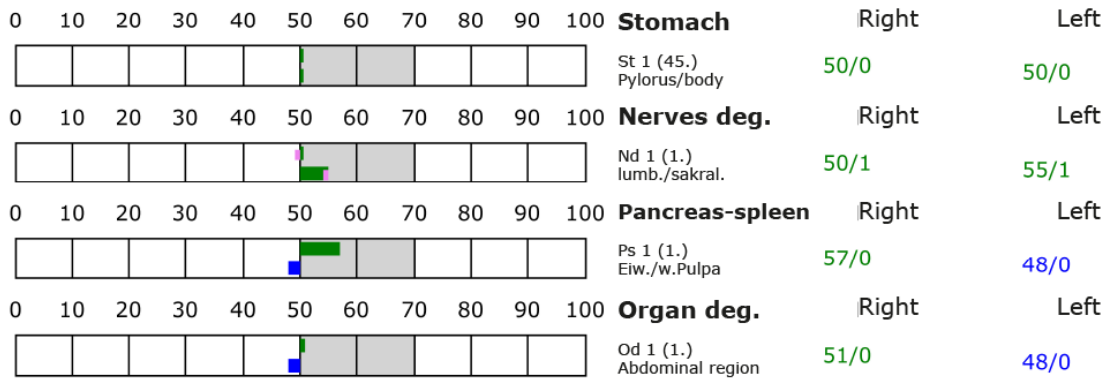
T: Total inflammation (>89 Skt.)
 P: Partial inflammation (70-89 Skt.)

D: Degeneration (< 50 Skt.) Standard values: (50-70 Skt.)

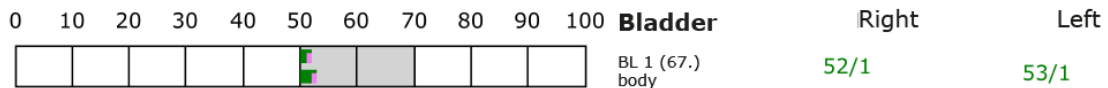
Element: lu - sk - li - ct



Element: st - nd - ps - od



Element: bl - ly - ki - al





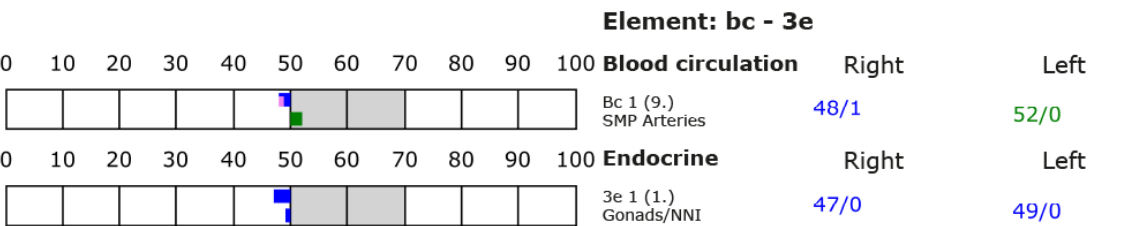
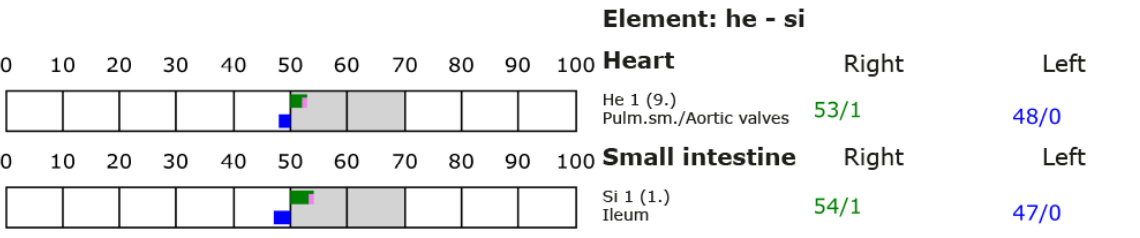
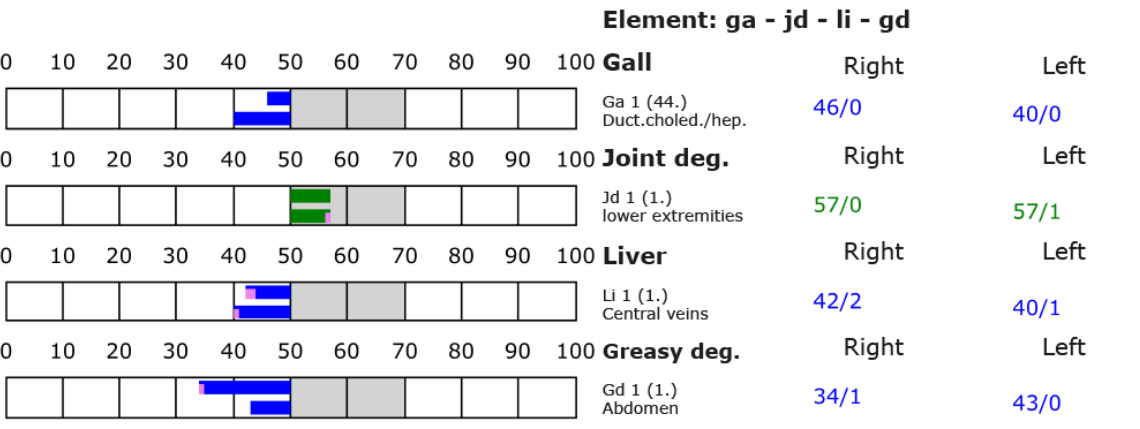
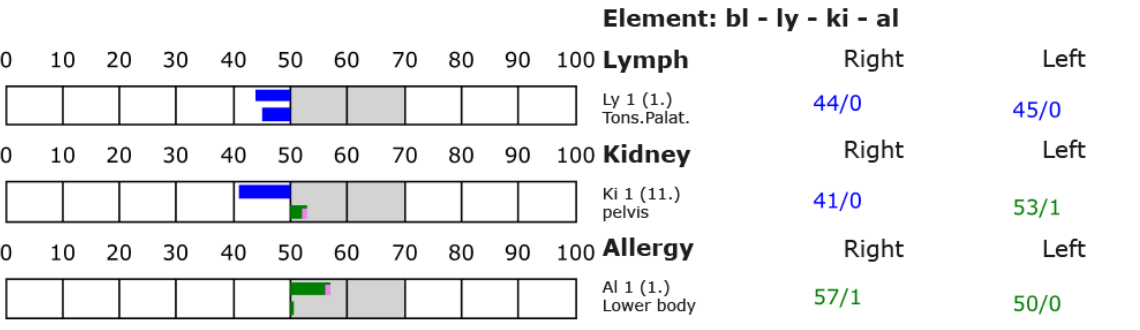
BESA basic test

+++ : Indicator decline > 15 Skt.
 ++ : Indicator decline 6-15 Skt.
 + : Indicator decline 3-5 Skt.

T: Total inflammation (>89 Skt.)
 P: Partial inflammation (70-89 Skt.)

D: Degeneration (< 50 Skt.)

Standard values: (50-70 Skt.)



BESA 2 test BEFORE



BESA 2 Testing BEFORE the EMF on test person 1 in the electric vehicle while it is in motion.

Eva Schmidt performs a BESA basic test on subject 1, who was directly in the electric vehicle while driving. This BESA testing was performed approximately 10 minutes after the BESA 1 Basic testing. All BESA testing was performed at the TING points (40 nail fold points on the fingers and toes).

Goal: To determine the response of Subject 1's meridian system in confrontation with the strong EMF sources from the electric vehicle as a comparison to BESA Basic testing and as a comparison against subsequent BESA testing.

BESA test evaluation P76 1.0
from **21-02-2023 at 11:31 – 11:35** (4 minutes) pages 17 and 18

Result: The values measured in the electric vehicle indicated an increase in stress at the organs or organ systems measured via the meridian endpoints (acupuncture points) compared to the measured values of BESA 1. This subsequently allows stressful conclusions to be drawn about the subject's subordinate metabolic situation.

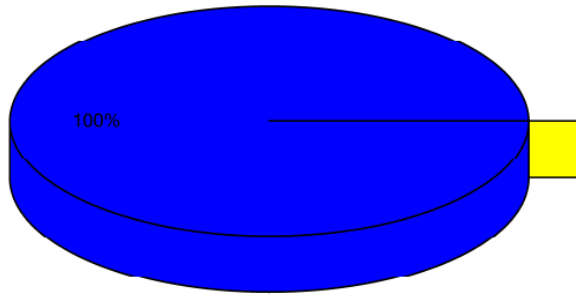
100 % in the blue area

Conclusion: As the BESA graphs show, after about 5 minutes of driving in an electric vehicle, all measurement points are now in the degenerative blue range (energy deficiency). It is dramatic to see how, due to the EMF in the electric vehicle, within a few minutes all measured values or the entire energy-informative system slips into a partially severe energy deficiency. This means that the energy system of the organism would take severe damage to the test person in case of permanent influences of such or similar disturbance fields. For a balancing of these measured values or in other words: for a harmonization of the values the energy system needs a strong positive energy-informative impulse from outside.

The comparisons of the BESA graphs confirm the stressing influences of the EMF on the test person.



Overview of BESA measuring



- Red: values with indicator decline
Decline greater than 2 ()
- Yellow: high values without indicator decline
Values over 70 ()
- Blue: low values
Values lower 50 (100%)
- Green: standard values
Values between 50 and 70 ()

BESA basic test

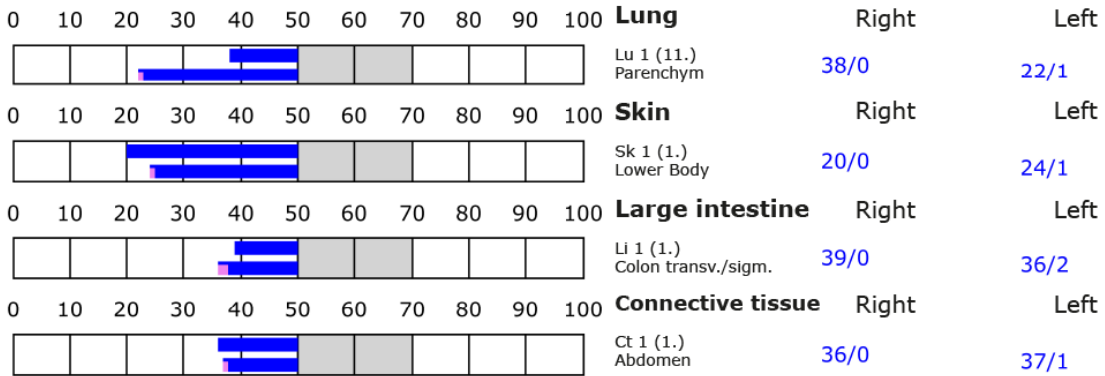
- +++ : Indicator decline > 15 Skt.
- ++ : Indicator decline 6-15 Skt.
- + : Indicator decline 3-5 Skt.

T: Total inflammation (>89 Skt.)
 P: Partial inflammation (70-89 Skt.)

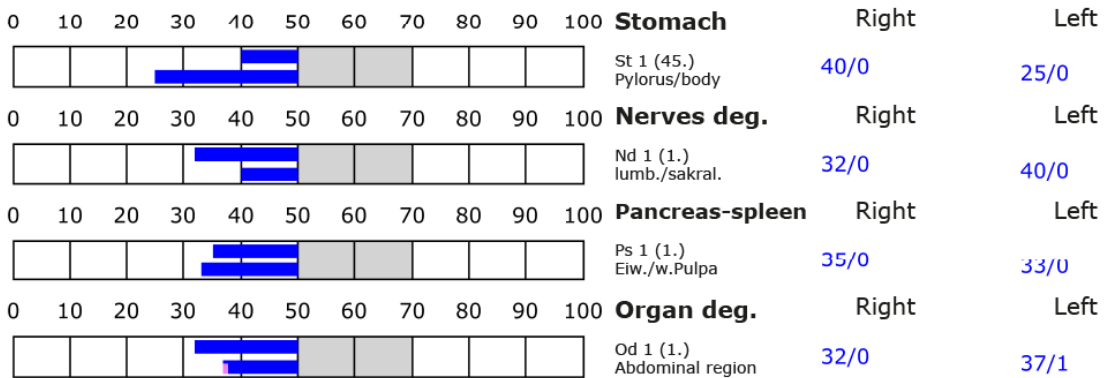
D: Degeneration (< 50 Skt.)

Standard values: (50-70 Skt.)

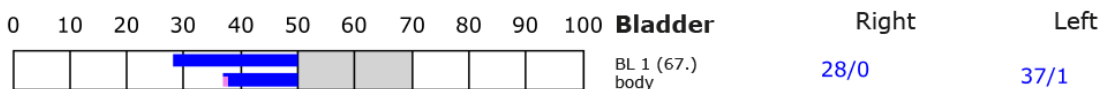
Element: lu - sk - li - ct



Element: st - nd - ps - od



Element: bl - ly - ki - al





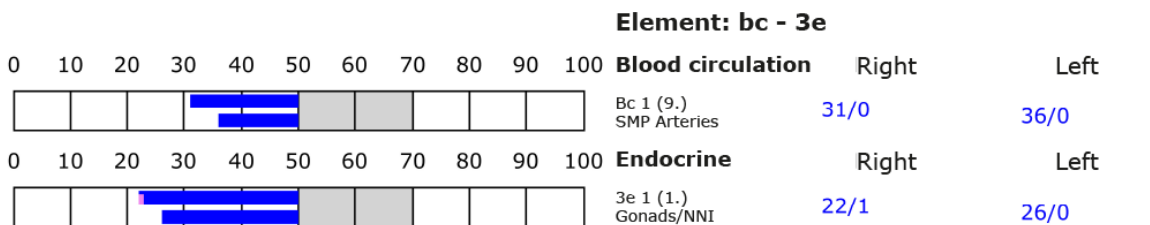
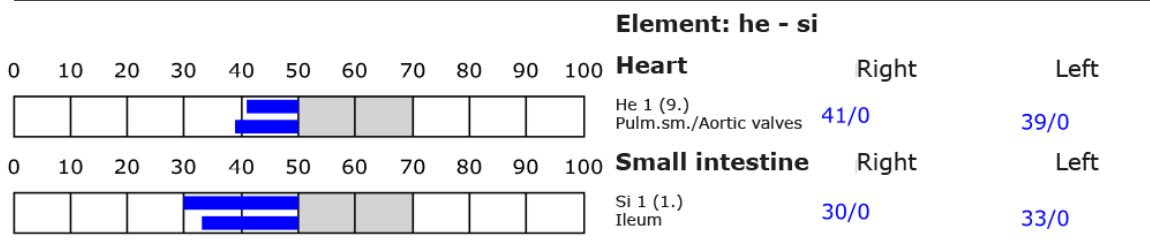
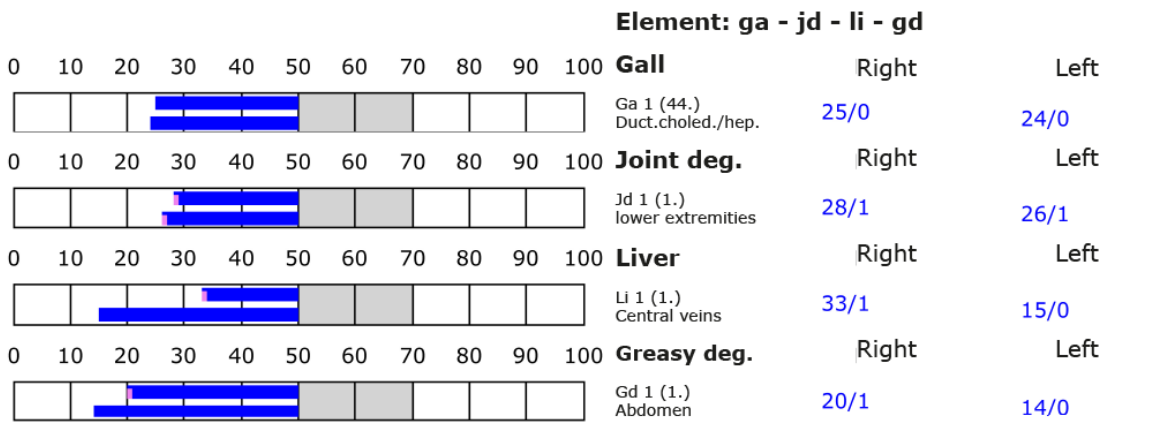
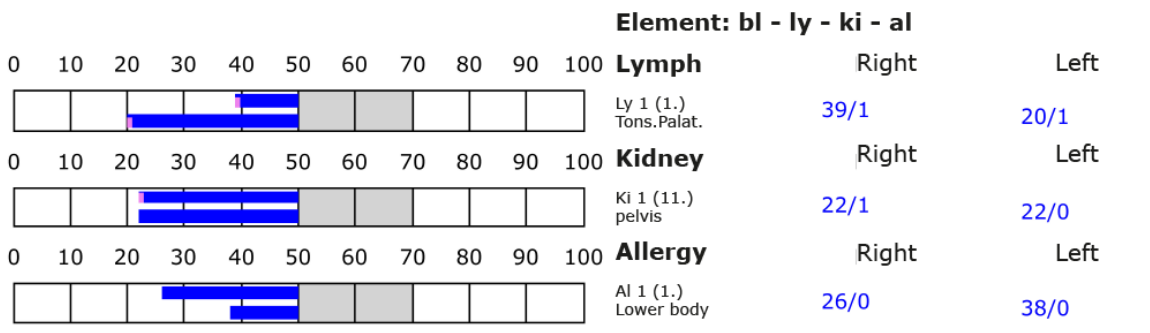
BESA basic test

+++ : Indicator decline > 15 Skt.
 ++ : Indicator decline 6-15 Skt.
 + : Indicator decline 3-5 Skt.

T: Total inflammation (>89 Skt.)
 P: Partial inflammation (70-89 Skt.)

D: Degeneration (< 50 Skt.)

Standard values: (50-70 Skt.)





BESA 3 test BEFORE

BESA 3 test BEFORE on test person 1 in the electric vehicle in motion, additionally during a telephone call.

Eva Schmidt performs a BESA test on subject 1. The test person is in the electric vehicle while driving, in addition to the previous BESA 2 testing, making a phone call with the smartphone. That is, in addition to BESA 2 testing, the subject was connected to a smartphone connected to the cellular network via his own cellular phone while driving in the electric vehicle. All BESA testing was performed at the TING points (40 nail fold points on the fingers and toes).

Goal: To determine the response of subject 1's meridian system within these strong EMF sources in the electric vehicle, which was further amplified by the phone call. To determine the differences compared to BESA 1 and BESA 2 testing BEFORE.

BESA test evaluation P76 1.0
from **21-02-2023 at 11:36 – 11:43** (7 minutes) pages 20 and 21

Result: The measurement result indicated a severe energy informative load increase at the meridian endpoints and subsequently on the subordinate metabolic situation of the test person.

92 % in the blue area

07 % in the red area

01 % in the yellow transition area

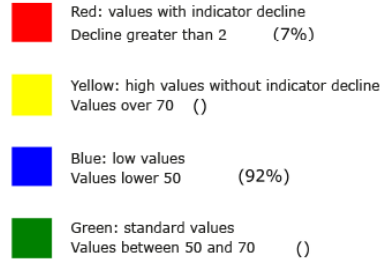
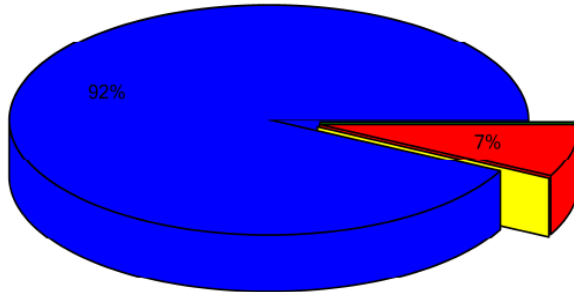
Conclusion: As the BESA graphs show, after about another 5-8 minutes of driving in the electric vehicle, all measurement points are now in a deep degenerative range (energy deficiency). However, the picture is dramatic because of the many readings now in the red zone. The red readings represent the total deregulation of these energy ranges. This means that the energy system of the organism would seriously damage the test person in case of permanent influences of such or similar interference fields. For balancing these red measured values or in other words:

For a harmonization of the values the energy system needs a strong positive energy-informative impulse from outside. The comparisons of the BESA graphs confirm the stressful influences of the EMF on the test person. This BESA test illustrates the dramatic difference between EMF in the electric vehicle and EMF in the electric vehicle when phone calls are made simultaneously.

The comparisons of the BESA graphs confirm the destructive change of the measured values or the stressful influences of the EMF on the test person.



Overview of BESA measuring



BESA basic test

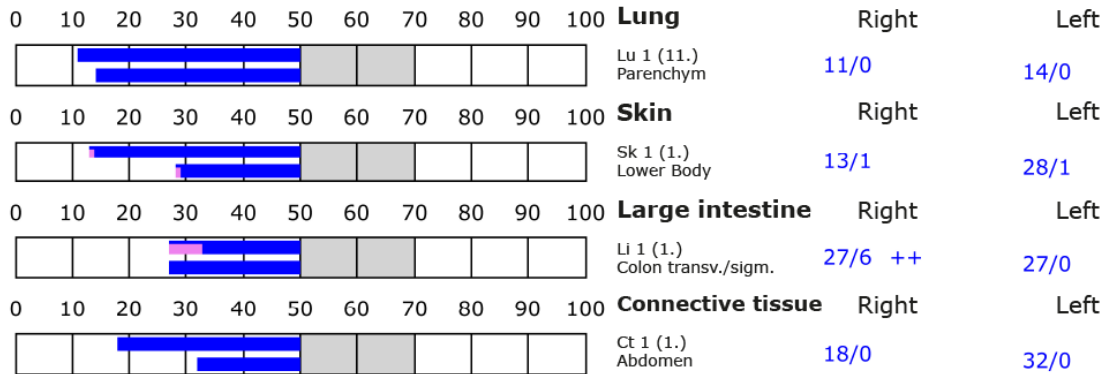
+++: Indicator decline > 15 Skt.
 ++: Indicator decline 6-15 Skt.
 +: Indicator decline 3-5 Skt.

T: Total inflammation (>89 Skt.)
 P: Partial inflammation (70-89 Skt.)

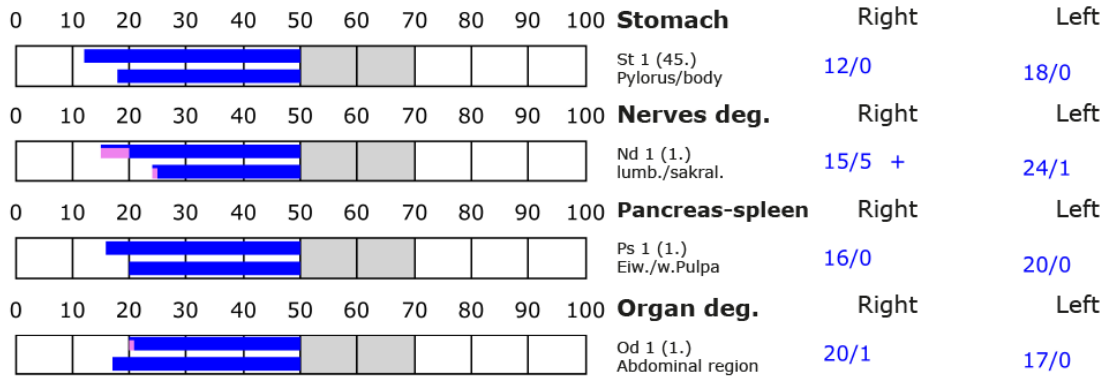
D: Degeneration (< 50 Skt.)

Standard values: (50-70 Skt.)

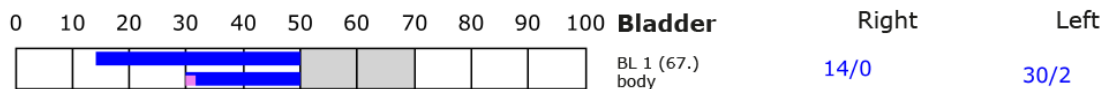
Element: lu - sk - li - ct



Element: st - nd - ps - od



Element: bl - ly - ki - al





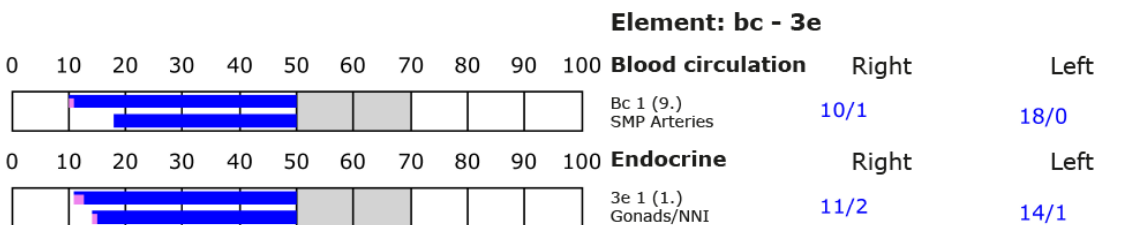
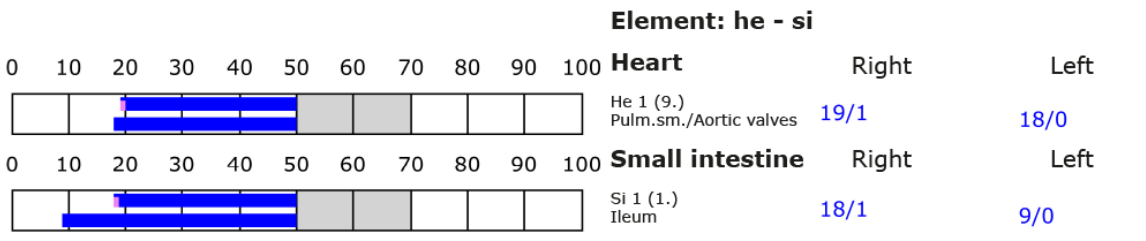
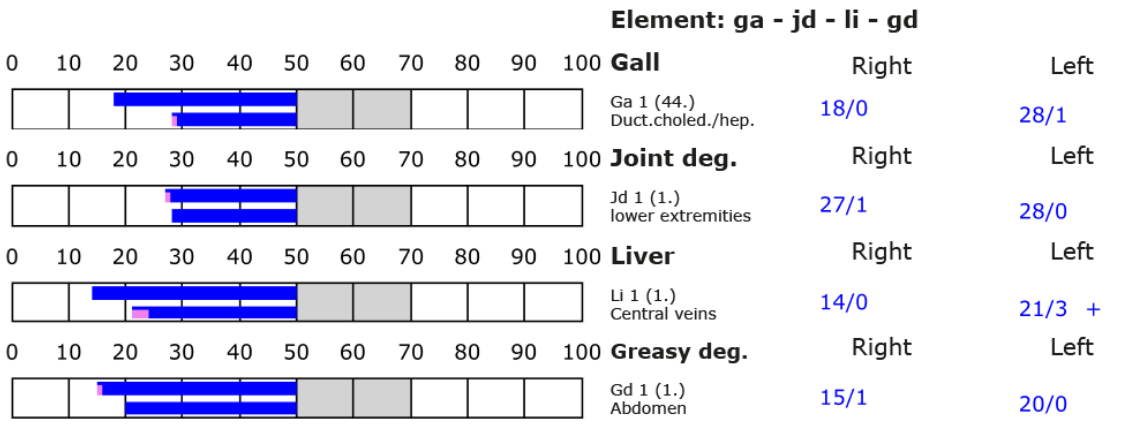
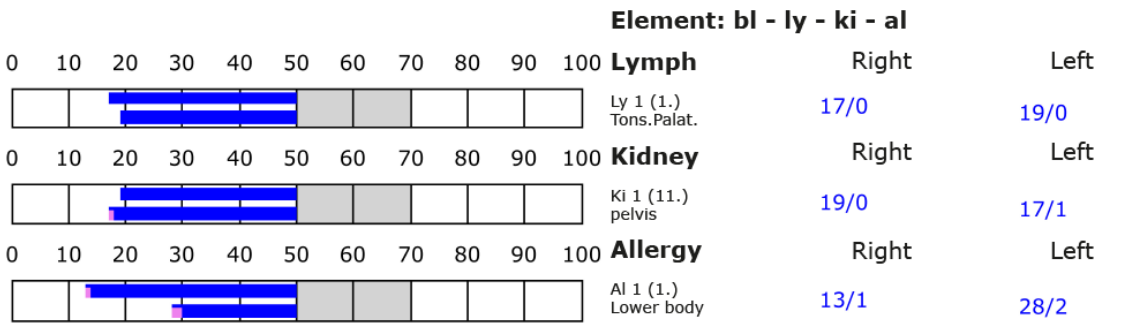
BESA basic test

+++ : Indicator decline > 15 Skt.
 ++ : Indicator decline 6-15 Skt.
 + : Indicator decline 3-5 Skt.

T: Total inflammation (>89 Skt.)
 P: Partial inflammation (70-89 Skt.)

D: Degeneration (< 50 Skt.)

Standard values: (50-70 Skt.)





BESA 4 test AFTER

BESA 4 testing AFTER EMF on subject 1 according to the conditions from BESA 2 testing and with the simultaneous confrontation with the Leela Quantum Infinity Bloc in the electric vehicle.

In the further course of the BESA test, all the EMF-carrying objects used in the BESA 2 tests BEFORE were activated again in the moving electric vehicle and tested together with the "Leela Quantum Infinity Bloc" on subject 1 of Eva Schmidt. The test object, the Leela Quantum Infinity Bloc, is located on the back seat of the electric vehicle while driving. Thus, the test object is in direct confrontation with the electric vehicle and the test person and thus in the measurement circuit.

Goal: To determine the reaction of the meridian system of the test subject when the EMF together with the "Leela Quantum Infinity Bloc" act on the test subject? To determine the differences compared to the BESA 2 tests BEFORE?

BESA test evaluation P76 1.0

from **21-02-2023 at 11:44 – 11:49** (5 minutes) page 23 and 24

Result: The measurement result shows a significant improvement at the meridian endpoints or at the energetic state of the test person within a few minutes.

100 % in the green area

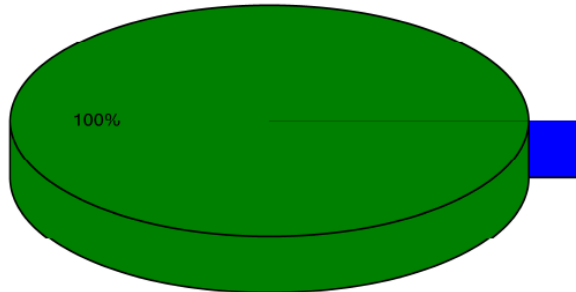
Conclusion: As the graphs show, after inserting the test object, the "Leela Quantum Infinity Bloc" into the measuring circuit, all measuring points are in the green, optimal, and harmonized range (balanced energy system). The BESA test results in a significant improvement of the energy situation in the meridian system of the test person compared to the previous BESA tests. It can be seen that the effect of the "Leela Quantum Infinity Bloc" is able to give the degenerative readings (total deregulation) detected in the BESA 2 tests the necessary impulse for harmonization (neutralization) into the life-promoting range.

The comparisons of the BESA graphs confirm the constructive changes and the resolution of the stresses and especially the red readings at the acupuncture points on the meridian system of the subject.

Even more, the results even show an improved picture compared to that of the BESA 1 Basic test.



Overview of BESA measuring



- Red: values with indicator decline
Decline greater than 2 ()
- Yellow: high values without indicator decline
Values over 70 ()
- Blue: low values
Values lower 50 ()
- Green: standard values
Values between 50 and 70 (100%)

BESA basic test

+++ : Indicator decline > 15 Skt.
 ++ : Indicator decline 6-15 Skt.
 + : Indicator decline 3-5 Skt.

T: Total inflammation (>89 Skt.)
 P: Partial inflammation (70-89 Skt.)

D: Degeneration (< 50 Skt.)

Standard values: (50-70 Skt.)

Element: lu - sk - li - ct

0	10	20	30	40	50	60	70	80	90	100		Right	Left
											Lung		
											Lu 1 (11.) Parenchym	56/0	55/1
											Skin		
											Sk 1 (1.) Lower Body	54/1	55/1
											Large intestine		
											Li 1 (1.) Colon transv./sigm.	58/0	60/1
											Connective tissue		
											Ct 1 (1.) Abdomen	54/0	53/0

Element: st - nd - ps - od

0	10	20	30	40	50	60	70	80	90	100		Right	Left
											Stomach		
											St 1 (45.) Pylorus/body	54/0	53/0
											Nerves deg.		
											Nd 1 (1.) lumb./sakral.	53/0	58/1
											Pancreas-spleen		
											Ps 1 (1.) Eiw./w.Pulpa	55/1	57/2
											Organ deg.		
											Od 1 (1.) Abdominal region	55/0	52/0

Element: bl - ly - ki - al

0	10	20	30	40	50	60	70	80	90	100		Right	Left
											Bladder		
											BL 1 (67.) body	53/0	56/1



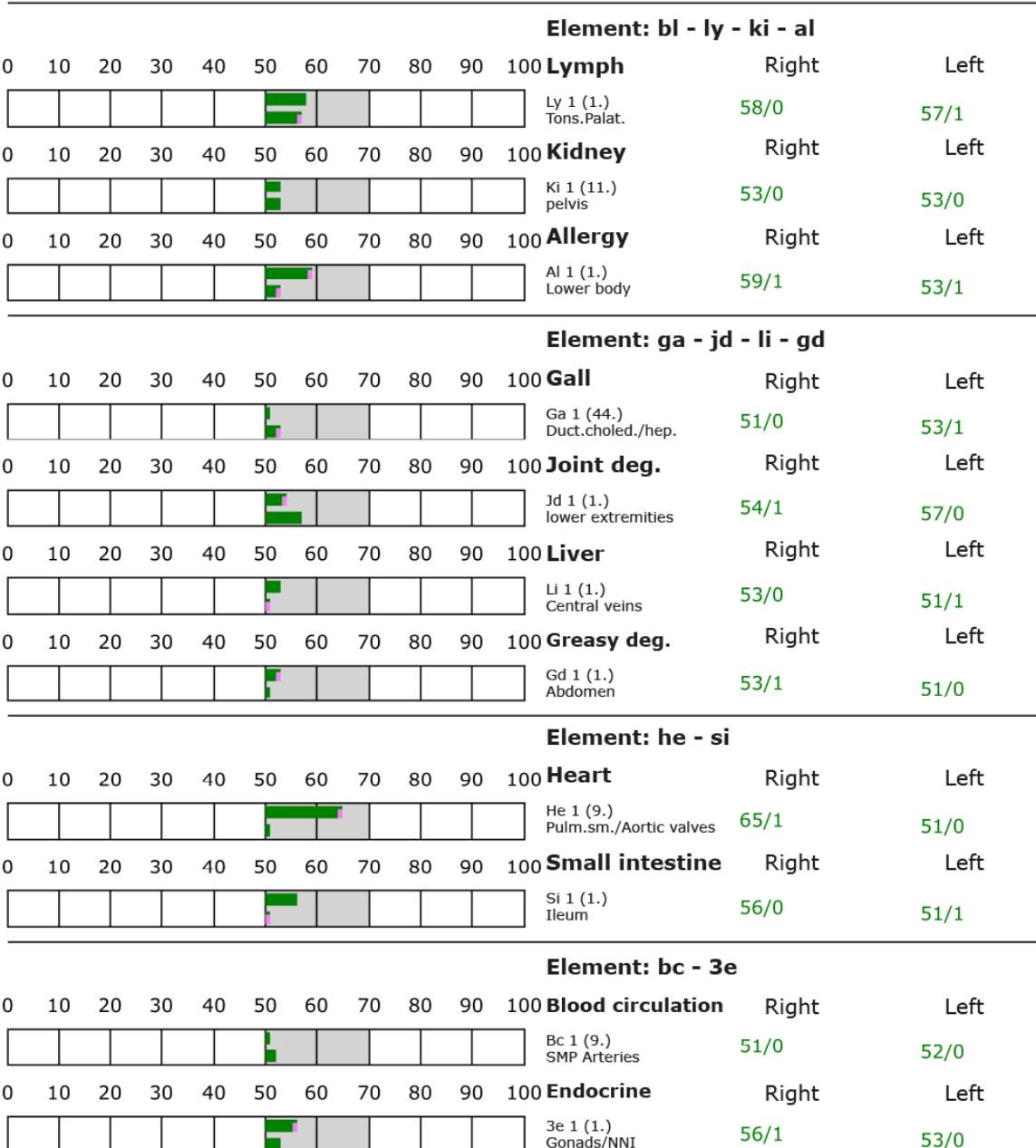
BESA basic test

+++ : Indicator decline > 15 Skt.
 ++ : Indicator decline 6-15 Skt.
 + : Indicator decline 3-5 Skt.

T: Total inflammation (>89 Skt.)
 P: Partial inflammation (70-89 Skt.)

D: Degeneration (< 50 Skt.)

Standard values: (50-70 Skt.)





BESA 5 test AFTER

BESA 5 testing AFTER EMF on subject 1 - according to the requirements of BESA 3 testing and with the simultaneous confrontation with the Leela Quantum Infinity Bloc in the electric vehicle.

In the further course of the BESA test, all the EMF-carrying objects used in BESA 3 testing BEFORE, including the telephone call, were activated again in the electric vehicle and tested together with the "Leela Quantum Infinity Bloc" on subject 1 in Eva Schmidt's moving electric vehicle. The Leela Quantum Infinity Bloc is again located on the back seat of the electric vehicle while driving. Thus, the test object is again in direct confrontation with the electric vehicle and the test person and thus in the measurement circuit.

Goal: To determine the reaction of the meridian system of the test person when the EMFs act on the test person together with the "Leela Quantum Infinity Bloc" according to the requirements of the BESA 3 test. Determination of the differences compared to the BESA 3 tests BEFORE and the BESA 4 tests AFTER.

BESA test evaluation P76 1.0

from **21-02-2023 at 11:50 – 11:54** (4 minutes) page 26 and 27

Result: The measurement result shows within a few minutes a similar significant improvement at the meridian endpoints or at the energetic state of the test person as in the BESA 4 test AFTER.

100 % in the green area

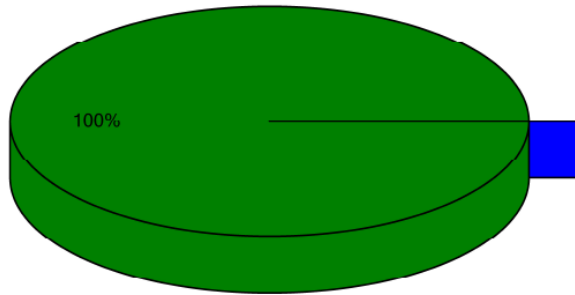
Conclusion: As the graphs show, also here after inserting the test object, the "Leela Quantum Infinity Bloc" into the measuring circuit, all measuring points are in the green, optimal and harmonized range (balanced energy system). The BESA test results in a significant improvement of the energy situation in the meridian system of the test person compared to the previous BESA 3 tests. It is shown that the effect of the "Leela Quantum Infinity Bloc" is also able to give the degenerative or red readings (total deregulation) detected in the BESA 2 and especially BESA 3 tests the necessary impulse for harmonization (neutralization) into the life-promoting range. The test object was also able to compensate for the additional stress caused by the telephone call in an energy-informative way.

The comparisons of the BESA graphs confirm the changes and the resolution of the stressed and especially the red acupuncture points on the meridian system of the test subject.

Even more, the results show an improved picture compared to the BESA 1 Basic test.



Overview of BESA measuring



- Red:** values with indicator decline
Decline greater than 2 (%)
- Yellow:** high values without indicator decline
Values over 70 (%)
- Blue:** low values
Values lower 50 (%)
- Green:** standard values
Values between 50 and 70 (100%)



BESA basic test

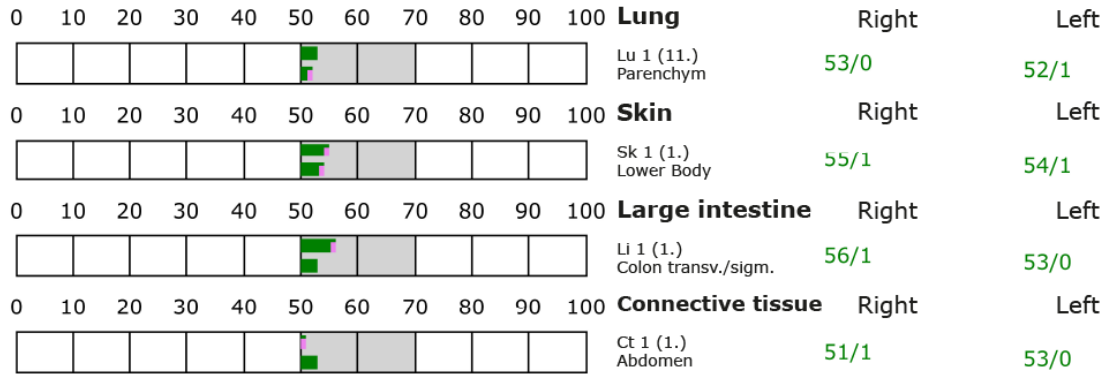
+++ : Indicator decline > 15 Skt.
 ++ : Indicator decline 6-15 Skt.
 + : Indicator decline 3-5 Skt.

T: Total inflammation (>89 Skt.)
 P: Partial inflammation (70-89 Skt.)

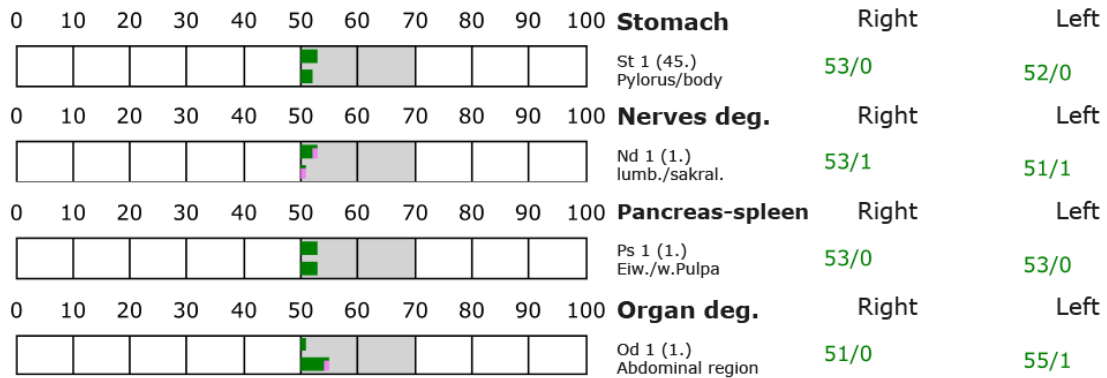
D: Degeneration (< 50 Skt.)

Standard values: (50-70 Skt.)

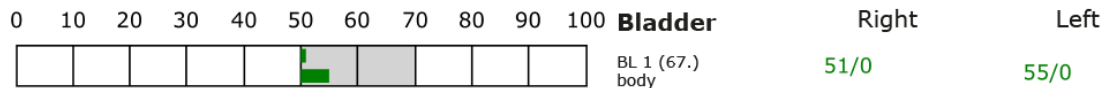
Element: lu - sk - li - ct



Element: st - nd - ps - od



Element: bl - ly - ki - al





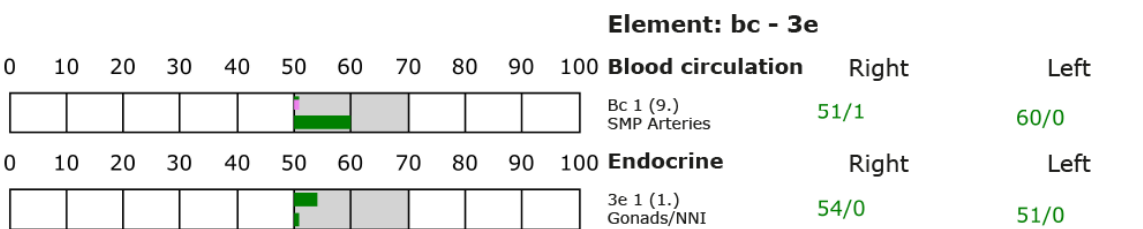
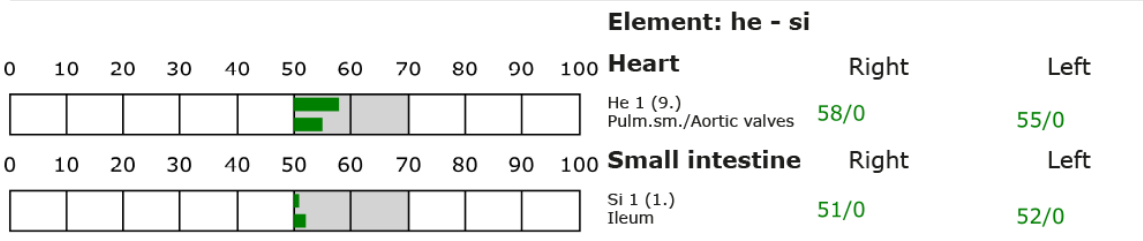
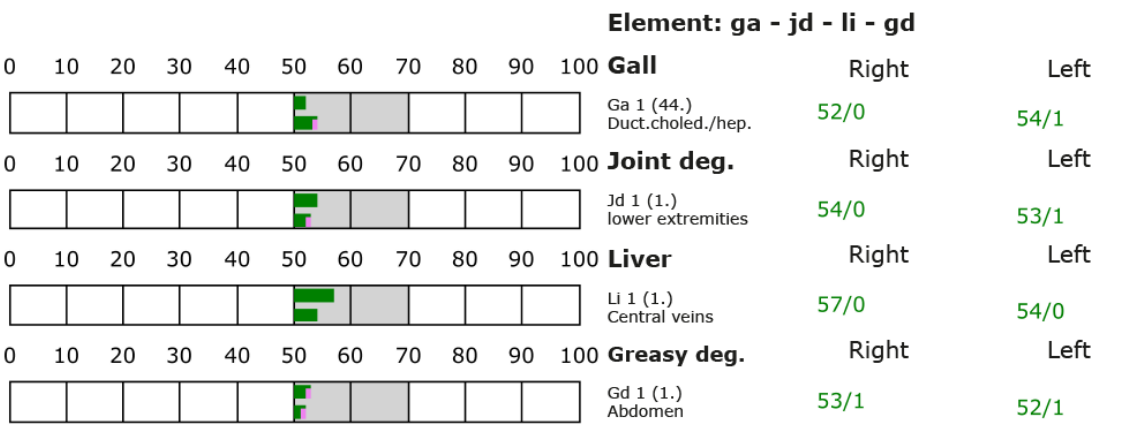
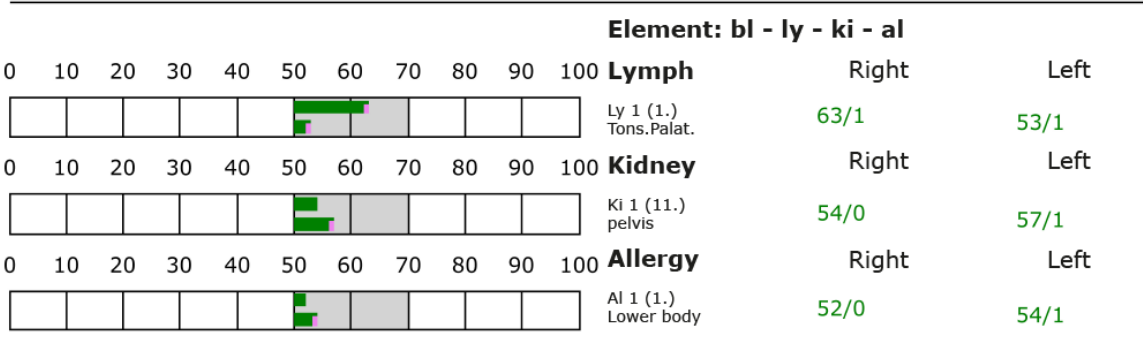
BESA basic test

+++ : Indicator decline > 15 Skt.
 ++ : Indicator decline 6-15 Skt.
 + : Indicator decline 3-5 Skt.

T: Total inflammation (>89 Skt.)
 P: Partial inflammation (70-89 Skt.)

D: Degeneration (< 50 Skt.)

Standard values: (50-70 Skt.)

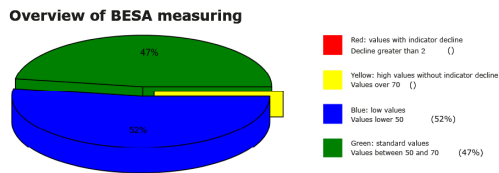


Comparison of all BESA tests BEFORE and AFTER

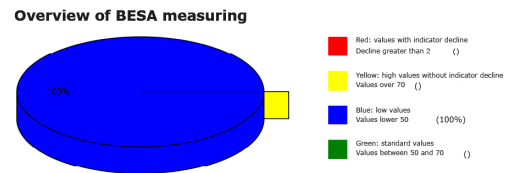


Proband 1

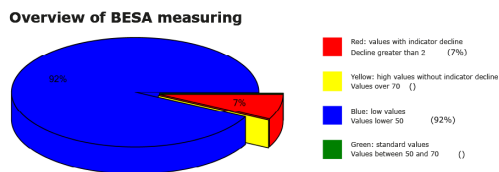
BESA 1 Basic test BEFORE as status



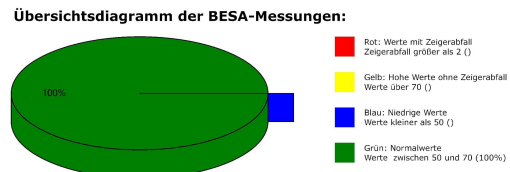
BESA 2 test BEFORE EMF in the electric vehicle



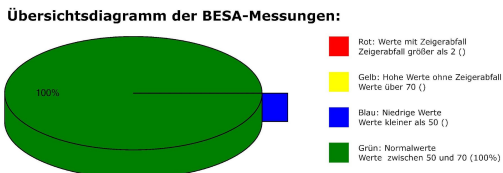
BESA 3 test BEFORE EMF in the electric vehicle and phone call



BESA 4 test AFTER EMF in the electric vehicle with testobject Leela Quantum Infinity Bloc



BESA 5 test AFTER EMF in the electric vehicle and phone call with testobject Leela Quantum Infinity bloc



The representation of the pie charts shows, on the one hand, the development of the loads on the test person with an increasing increase of the EMF in the electric vehicle and on the other hand how these could be harmonized by the test object, the Leela Quantum Infinity Block.



General information about the test result

Man represents a kind of receiving antenna for environmental information. This is because human life depends fundamentally and exclusively on environmental information. Our organism is biologically very sensitive to where natural information (fields) are located or where this natural information is subject to interactions and fluctuations. **For this reason, detected informative electromagnetic interference fields are biologically highly relevant. Any reduction or transformation of these interfering fields (ideally to 100 percent) is biologically very important, often even vital.** These informational disturbances from our environment are only compatible with life if they can be readjusted to a natural fluctuation tolerance. Disturbances, problems, blockades, and disharmonies in the biological control circuit of man find their causes in such disturbing electromagnetic information influences.

Neutralizing or harmonizing effects could be proven in this detailed project P76 1.0 to determine the effect of the "Leela Quantum Infinity Bloc". The "Leela Quantum Infinity Bloc" was able to neutralize the biologically detrimental effects and effects of electromagnetic interference fields in a mid-range electric vehicle that were observed in the test persons.

The significant ability of the "Leela Quantum Infinity Bloc" to neutralize and harmonize the electromagnetic interference fields or stress factors in the electric vehicle tested in this detailed project P76 1.0, as well as their transformation into biological life-promoting goodness, is proven by this project.

Authorized Summary

The BESA tests carried out by IFVBESA on the energetic and physical effects of the "Leela Quantum Infinity Bloc" have clearly shown that it is able to neutralize or harmonize biologically significant stress factors from EMF such as WLAN, Bluetooth, 3G, two connected smartphones of the generations 4G and 5G as well as transmission masts in the meridians or at the acupuncture points of the test persons. Via the bioenergy-informative system analysis, the effect of the above-mentioned stress factors on the test persons, their meridian systems, and their energetic-biological control circuits was questioned and systemically tested on the energy-informative level. The BESA tests BEFORE - AFTER show significant changes at the tested acupuncture points at the meridian system of the test persons. The measurement data as well as their key figures impressively confirm on the one hand the stress caused by the tested fields to the

On the other hand, they show how the deregulating energies are transformed into biocompatible energies immanent to the body after the application of the "Leela Quantum Infinity Bloc".



From a holistic point of view, it may be assumed that the positive effect on the test persons also occurs in other people. That the positive influence by the "Leela Quantum Infinity Bloc" is actually possible with high precision is clearly shown by this test through the BESA BEFORE-AFTER comparisons. All measured values improved significantly from the mostly 100-percent blue or red measuring range into the green mostly 50-second range (scale value), i.e. the range of optimal measured values.

This means: an optimal regulation dynamic has taken place. Here, in the sense of the IFVBESA, one can clearly speak of an optimal, significant improvement of the body's own energy situation.

Result: The test persons were brought into contact with heavy EMF during the BESA-NACHHER tests. In contrast to the BEFORE tests, in which the "Leela Quantum Infinity Bloc" was not used, consistently positive measurement results were found, indicating that neutralization or harmonization had taken place. The regulation dynamics developed into an optimal effective range.

By proving the energetic effectiveness of the "Leela Quantum Infinity Bloc" in this detailed project P76 1.0, the requirements for obtaining a BESA seal of approval in the field of EMF by the International Professional Association for BESA were fulfilled.