



IFVBESA

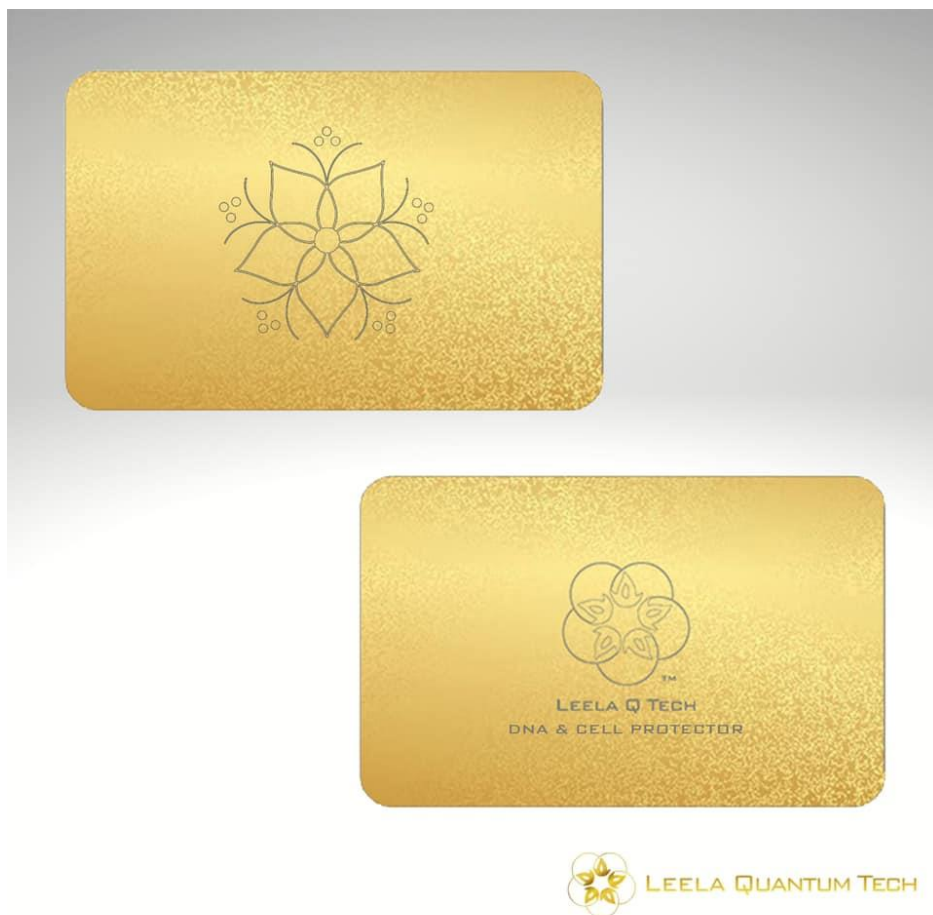
Information is crucial

P74 1.0 BESA-Detailproject
div. mRNA ingredients
DNA & Cell Protector Card



Detail-Project P74 1.0 to BESA Expertice

Bioenergy informative system analysis within the framework
of the BESA seal of approval on the efficacy
of the product "Leela Quantum DNA & Cell Protector Card"
with div. mRNA ingredients
also referred to as "test object" in the project





Client:

Firma Leela Quantum Tech, LLC
Attn: Eleonora Goldenberg
1421 LUISA STREET, STE G
SANTA FEE, NM 87505
USA

Project participants:

Project leader:	Wolfgang Hans Albrecht, präsident and scientific dirfector of the IFVBESA
Test Person:	Eva Krankl, Vicepräsident and deputy scientific director of the IFVBESA
Respondent:	7 anonymous subjects with different health conditions and age or gender.
Detail Project P74 1.0	Subject 1: Woman aged 58 years, Corona unvaccinated, high vitality level, was tested with digitized mRNA vaccine in correlation with specific EMSF.
Detail Project P74 2.0	Subject 2+3: The two subjects, female aged 48 years and male aged 65 years were injected with a so-called Corona mRNA vaccine.
Detail Project P74 3.0	Subject 4,5 + 6: Woman aged 64 years, man aged 61 years and woman aged 36 years, all 3 Corona unvaccinated, were tested for spike proteins and viral fragments.
Detail Project P73 4.0	Subject 7: Subject aged 80 years, Corona mRNA inoculated, was tested for spike proteins, viral fragments, and graphene and cationic lipids.

Project location:

Location of the IFVBESA (Professional association for Bioenergy informative system analysis - BESA), Mainstreet 1, A-4861 Kammer/Schörfling am Attersee

Datum: 27.10.2021 until 28.10.2021

Projektdauer: 2 Days



Table of contents

BESA-Legend for the interpretation of the BESA-measurement results.....	5
Basic of the research project creation P74	6
Research funding services of the IFVBESA - BESA- reference tests	7
Research Project Description (Detailed Project).....	7
Testablauf	9
Allgemeines zum Testergebnis	29

Importend notes

The client has the right to exploit this expert opinion. Irrespective of this, this expert opinion constitutes intellectual property of IFVBESA as the contractor. The contractor is entitled to use this project or the resulting expert opinion elsewhere if this does not violate the client's data protection and duty of confidentiality. Apart from this, this project/appraisal, with the exception of the "authorised abridged version", may not be altered or passed on in abridged form without the consent of the IFVBESA. The assignment for this project refers to bioenergy-informatively measurable values and their interpretation according to the guidelines of BESA or the IFVBESA. The maintenance of the quality of the tested products as well as their regular control are the task and responsibility of the client. The investigation of the manufacture, the mechanism of action or interpretations of the client's products to third parties are not the responsibility or task of the contractor. Video recordings may only be made with the permission of the IFVBESA.



BESA-Legend for the interpretation of the BESA-measurement results

The measured value of 50 on the tested meridian represents an optimal energetic state in this organ or its subordinate and superordinate levels. Also measured values in the range of 50 to max. 70 still count as a neutral and balanced energy status. The organism is able to regulate irritations of the system (wrong environmental signals) very well.

Measured values above 70 to 100 represent the inflammatory range or a so-called energy surplus as a reaction to the irritations of the system by corresponding environmental signals. After reaching the maximum values, the energy state tips into the degenerative (blue) range.

Measured values from below 50 to around 0 represent the so-called degenerative measuring range or a lack of energy as a reaction to the stimulation of the system by corresponding environmental signals.

Measured values represented by a so-called pointer drop of more than 3 scale lines indicate total deregulation. The influence of certain environmental signals then leads to such strong system overloads, which can only be brought into harmonization by corresponding new signals.

BESA Key figures:

up to 0,79	very deep energetic regulatory disorder (SSD) energy deficiency
0,8 to 1,19	strong energetic regulation disturbance (SD) degeneration/energy deficiency
1,2 to 1,59	energetic regulation disorder (D) degeneration/energy deficiency
1,6 to 1,99	degenerative transition area (DÜ)
2,0 to 2,39	optimal regulation (OR)
2,4 to 2,79	in the regulation (R)
2,8 to 3,19	partial inflammation = regional energy excess (PE)
from 3,2	total inflammation = strong general energy surplus (TE)



Basic of the research project creation P74

The international professional association for bioenergetic system analysis was commissioned by the company Leela Quantum Tech LLC to test or prove the effect of the test object "Leela Quantum DNA & Cell Protector Card" by means of bioenergetic system analysis (BESA). The testing took place independently of the subjective feeling of the test person.

Description of the "Leela Quantum DNA & Cell Protector Card" by the client:

Our DNA and cells are at the heart of our physical existence, and strengthening and protecting them from potentially harmful substances, influences and external forces is key to our overall wellbeing. The big questions these days are: Have you been vaccinated or are you being vaccinated? Or do you want to avoid a Corona vaccination, but are concerned that you might ingest or be infected by people who have been vaccinated with an mRNA or vector-based vaccine? Either way, you are concerned about keeping your DNA and cells pure, strong and in the best possible shape. This high power frequency set is a masterpiece that has been developed and tested by the best healers in our network together, for which we are very grateful. It is designed to energise and support the body systems and performance. All subjects report that it increases vitality, clarity and well-being. While everyone's reaction to external fields, forces and substances is unique, this set of frequencies has been shown to reduce stress and its influence.

Furthermore, the developer believes that the "Leela Quantum DNA & Cell Protector Card" as follows:

- strengthens the cells
- strengthens the DNA
- creates the awareness in the cells to be able to optimise their function in a natural way in order to build up the greatest possible protection against harmful foreign substances and information

Furthermore, the company "Leela Quantum Tech, LLC" claims about tests that were carried out, that side effects caused by the mRNA vaccination on the body or in the brain could be reversed by the "Leela Quantum DNA & Cell Protector Card". Furthermore, it is assumed that these effects should also occur with other similar vaccinations or vector-like vaccinations.

- protects unvaccinated people from becoming infected through shedding.

Due to its mode of operation, it has a wide range of applications.

In the case of this project, it is about the application of the "Leela Quantum DNA & Cell Protector Card" for various modern, so-called mRNA or vector-based vaccines and their effect on the human body. In this detailed project P74 1.0, the effect of an mRNA vaccine on the energetic system of a test person and subsequently also in connection with special electromagnetic interference fields (EMSF) such as 5G and UVA light in the range of 360 nm (nanometres) is tested.



Research funding services of the IFVBESA - BESA- reference tests

General information about this project:

The project P74 1.0 deals specifically with the proof-of-concept of the "Leela Quantum DNA & Cell Protector Card" against a known mRNA vaccine, the effect of which is tested digitally on a test person. In this detailed project, special attention was paid to the effect of possible ingredients such as spike proteins and certain virus fragments, which are said to be capable of causing autoimmune diseases. Likewise, the effect of the "Leela Quantum DNA & Cell Protector Card" will be tested on test subjects when they are simultaneously exposed to certain electromagnetic interference fields (EMSF) in addition to the described ingredients of the mRNA vaccine.

IMPORTANT: These include artificial UVA light in the range of 360nm (nanometers) as well as radiation from a 5G transmitter in the range of 2.64 GHz. The mRNA vaccine as well as all mentioned EMSF are digitized and the effect on the energetic system of the test person is simulated.

The test person is 58 years young and is in a good fitness level corresponding to his age. The test person has not been vaccinated against Corona and has no other complaints worth mentioning

The "Leela Quantum DNA & Cell Protector Card" is tested according to the client's request within the framework of the applicable conditions of the IFVBESA for the award of quality seals. In principle, seals of approval are awarded in three categories depending on the significance of the test results, taking into account all tests of a project. For the "Leela Quantum DNA & Cell Protector Card", it is to be determined whether, through its application, stresses via already mentioned stress factors such as mRNA vaccine as well as possible correlations of this with certain EMSF and, as a result, disturbances, problems, blockages, disharmonies arising or existing in the energy system of the test person (biological system) can be harmonised, neutralised and thus negative pathological states can be replaced by positive states. This will be questioned in the following commissioned tests of this project.

Research Project Description (Detail Project)

The purpose of the test is to prove the functionality of the "Leela Quantum DNA & Cell Protector Card" through test results obtained by confronting the test person with precisely selected and digitised stress factors such as the mRNA vaccine and the EMSF-carrying objects in order to significantly demonstrate and compare their reactions without the "test object" and with the "test object". In a BEFORE measurement, the test person is exposed to the mRNA vaccine and subsequently to the mRNA vaccine in correlation with the EMSF-carrying objects, and in the AFTER measurement, the test person is exposed to the test object "Leela Quantum DNA & Cell Protector Card" in addition to the above-mentioned stress factors.



- The BEFORE measurements are carried out without the "Leela Quantum DNA & Cell Protector Card"
- The AFTER measurements are carried out with the "Leela Quantum DNA & Cell Protector Card"

The question in each AFTER measurement was: "Is the "test object" suitable and able to harmonise or neutralise the so perceived negative effects of the mRNA vaccine as well as its correlation with the special EMSFs on the organism?"

The correspondingly designed tests should provide information about this by comparing the pre-measurement without the "Leela Quantum DNA & Cell Protector Card" with the test results of the post-measurements to be carried out using the "Leela Quantum DNA & Cell Protector Card".

It is the intention of the company "Leela Quantum Tech, LLC" to determine whether the test object "Leela Quantum DNA & Cell Protector Card" is suitable for harmonising and/or neutralising the disturbances, problems, blockages, disharmonies in the meridian system of the test person (biological object) resulting from the above-mentioned stress factors, as noted in the product description.

General information on the information transfer of the test object

Information is transmitted from the hyperspace of the test object to the hyperspace of biological objects (humans, animals, plants). From there, the information reaches the reference space or energy space via so-called interaction channels. This is an amalgamation of, among other things, all organs and energy forms in the biological object. There, the information of the programme can dynamically realise itself and thus change current states. The changes can show themselves in the form of neutralisations or harmonisations of disturbances, the dissolution of problems, blockages and disharmonies.

Conditions:

The BESA tests were carried out in the premises of the IFVBESA under laboratory conditions, at a room temperature of 20°Celsius, on a natural wooden floor. The test person is deswitcht (made testable) before the BESA tests or the test possibility is questioned with the test person.

- | | |
|--------------|--|
| Pos.1 | BESA 1 Test Basic (bioenergy informatics status) on the test person |
| Pos.2 | BESA testing in case of confrontation with the mRNA vaccine on the test person |
| Pos.3 | BESA testing on the test person in confrontation with the mRNA vaccine and EMSF from UVA-light in the range of 3.60 nm |



- Pos.4** BESA testing in case of confrontation with the mRNA vaccine as well as EMSF from UVA-light and 5G mobil phone radiation in the range of 3.60 Ghz on the test person
- Pos.5** BESA testing of volunteers exposed to the mRNA vaccine and EMSF from UVA-light and 5G mobie phone radiation in the range of 3.60 Ghz and the „Leela Quantum DNA & Cell Protector Card“
- Pos.6** Evaluation of the results in the project as well as summary in a corresponding expert opinion according to the model.

Procedure and guidelines for implementation

1. **BESA-basic measurement of the test person** at all previously determined measurement points (TING points) serves to determine the actual condition. The results are determined exactly according to the BESA specifications and documented via the BESA graphs.
2. **the test person brought into contact with the mRNA vaccine and the EMSF-conducting objects** depending on the project, whereby the sequence discussed with the developer was used as a guideline and is adhered to accordingly. In order to be able to determine the current energy state, the measuring points mentioned under point 1 are measured in the same order and for the same duration for each test of the load factors. The results are determined exactly according to the BESA specifications and documented via the BESA graphs.
3. **Activation of the test object "Leela Quantum DNA & Cell Protector Card"**
 - 3.1. When **activating the "Leela Quantum DNA & Cell Protector Card"**, it is brought into the measurement area according to the client's instructions.
 - 3.2. The test person is brought into contact with the load factors of the mRNA inoculation and the EMSF-carrying objects. The measuring points mentioned in point 1 are measured in the same order and for the same duration in order to determine the current energy state. The results are determined exactly according to the BESA specifications and documented via the BESA graphs.

Test procedure

BESA 1 testing BASIC BEFORE as status

In the first step, a basic bioenergetic test (bioenergetic status) is carried out on the meridian end points (TING points) of the test person.

BESA 2 testing BEFORE withe the digitised mRNA vaccine

In the further BESA test procedure, the mRNA vaccine is tested on the test person. The questions are: How does the meridian system react? How does the energetic status change



when confronted with mRNA vaccine? What are the differences compared to the BESA 1 BASIC test BEFORE?

BESA 3 and 4 tests BEFORE with the digitised vaccine as well as special EMSF leading objects

In the further BESA test runs, the mRNA vaccine is tested in correlation with the UVA light and subsequently with the mobile phone radiation from 5G on the test person. The questions are: How does the meridian system react? How does the energetic status change with additional confrontation of the mRNA vaccine with the EMSF-carrying objects? What are the differences compared to the BESA 2 and 3 tests BEFORE?

BESA 5 testing AFTER with the digitised mRNA vaccine and the special EMSF leading objecten and the „Leela Quantum DNA & Cell Protector Card“

In the last BESA test, all the stress factors already tested above as well as the "Leela Quantum DNA & Cell Protector Card" are introduced into the measuring circuit. Now the question is: How does the meridian system of the test person react within the area of effect of the "Leela Quantum DNA & Cell Protector Card" when all the stress factors already tested are activated at the same time?



Test person 1

BESA 1 Test BASIC BEFORE

BESA 1 Test BASIC BEFORE as status

Eva Krankl carried out a BESA basic measurement on the test person. All BESA tests were carried out at the TING points (40 nail fold points on the fingers and toes).

Goal: The creation of a basic test (status) to represent the energetic starting situation for all further BESA test.

BESA-Test evaluation P74 1.0
from **27-10-2021 at 16:06 to 16:12** (6 Minutes) Page 12 and 13

result: The measurement result indicated little energetic stress at the meridian end points and subsequently the subordinate metabolic situation of the test person.

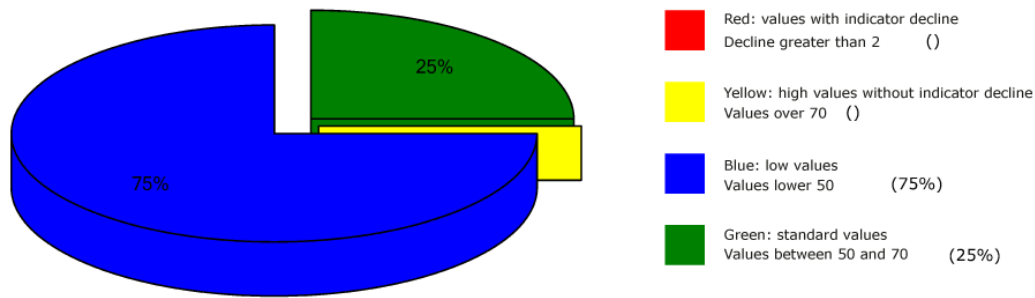
75 % in the blue area

25 % in the green area

Conclusion: As the graphs show, many measuring points are indeed in the degenerative blue area (energy deficiency). But a closer look shows that some blue test results are just at the green limit (optimal measured value), only very few are below the measured value of 40 sct. Here, one can easily assume an adequate BESA baseline test. The comparisons of the BESA graphs confirm the explanations on the one hand and on the other hand also show that small strains on the test person's energetic system can be recognised.



Overview of BESA measuring



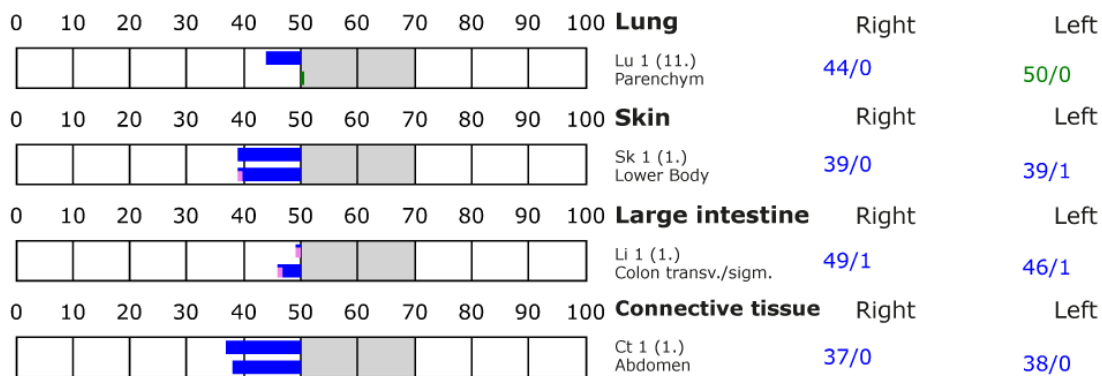
BESA basic test

+++ : Indicator decline > 15 Skt.
++ : Indicator decline 6-15 Skt.
+ : Indicator decline 3-5 Skt.

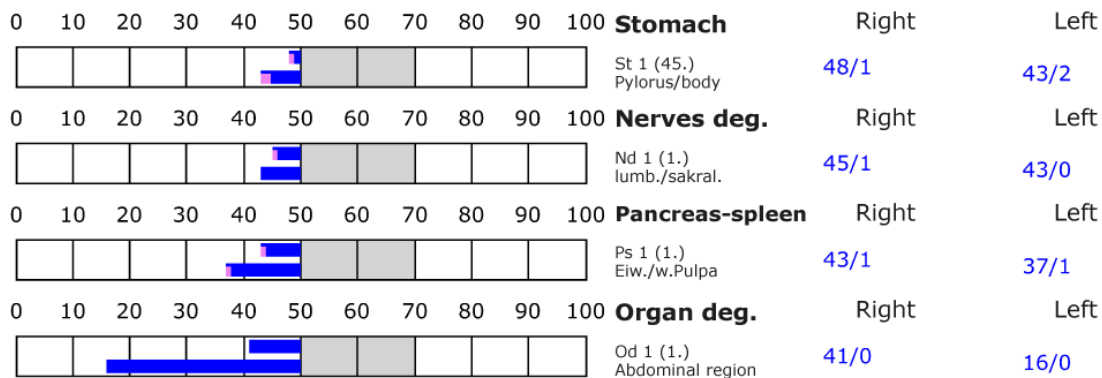
T: Total inflammation (>89 Skt.)
P: Partial inflammation (70-89 Skt.)

D: Degeneration (< 50 Skt.) Standard values: (50-70 Skt.)

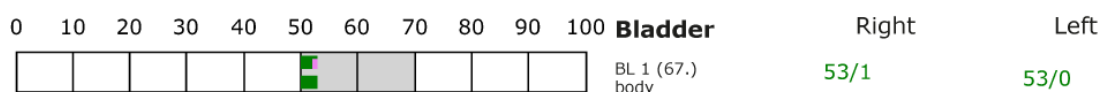
Element: lu - sk - li - ct



Element: st - nd - ps - od



Element: bl - ly - ki - al





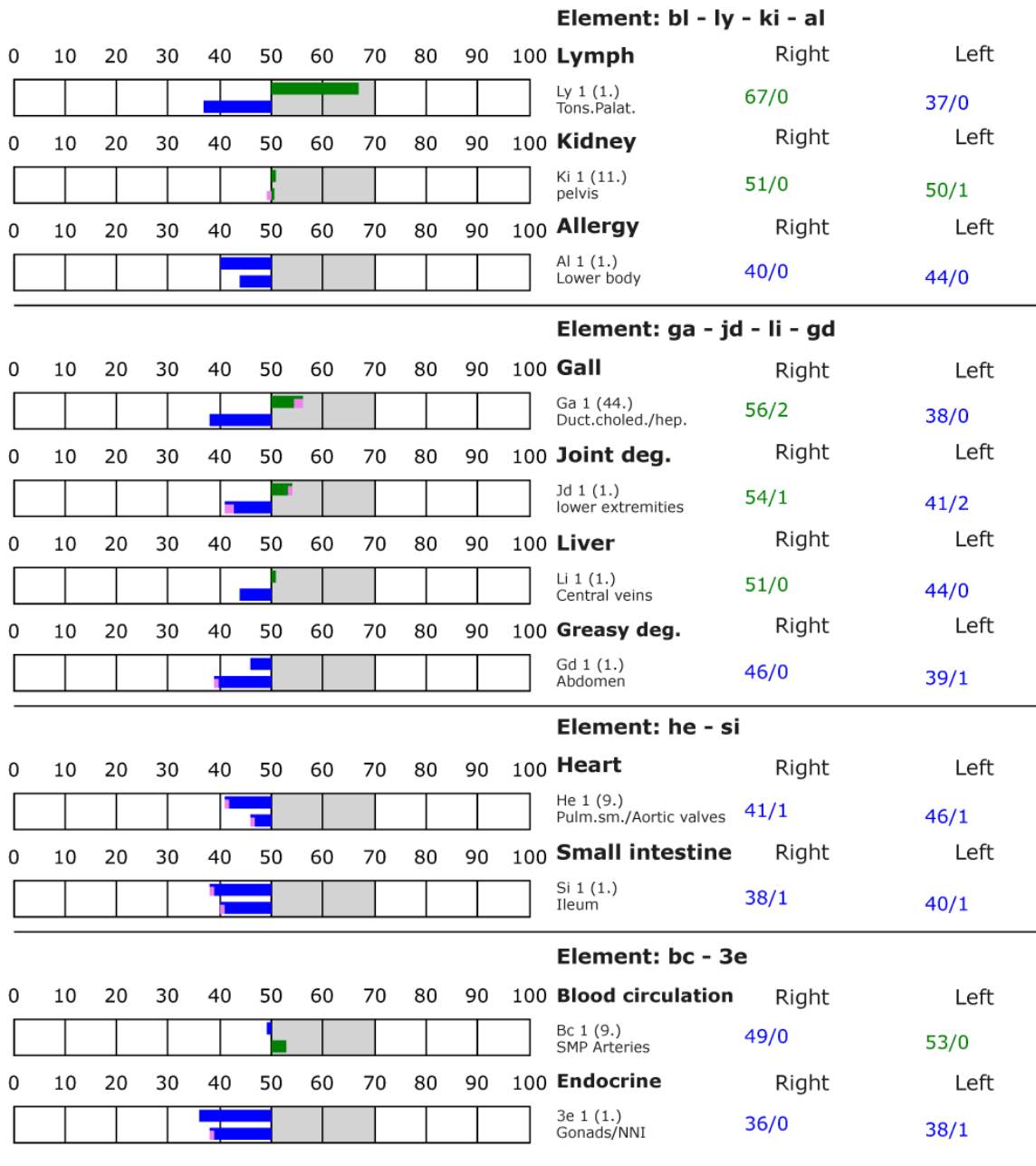
BESA basic test

+++ : Indicator decline > 15 Skt.
++ : Indicator decline 6-15 Skt.
+ : Indicator decline 3-5 Skt.

T: Total inflammation (>89 Skt.)
P: Partial inflammation (70-89 Skt.)

D: Degeneration (< 50 Skt.)

Standard values: (50-70 Skt.)





BESA 2 Test BEFORE

BESA 2 Test BEFORE; mRNA vaccine on the test person

In the further course of the BESA test, the test person was connected with the described mRNA vaccine. All BESA tests were again carried out at the TING points (40 nail fold points on the fingers and toes) as in the BESA 1 test BASIC.

Goal: To determine the reaction of the meridian system of the test person within the influence of the mRNA vaccine. Determination of the differences compared to the BESA 1 test BASIC BEFORE.

BESA-Test evaluation P74 1.0

from **27-10-2021 at 16:15 to 16:19** (4 Minutes) age 15 and 16

result: The measurement result shows a dramatic crash of the measured values at the meridian end points or at the energetic system of the test person.

65 % in the red area

35 % in the blue area

Conclusion: As the graphs show, after introducing the mRNA vaccine into the measuring circuit, many measuring points are in the degenerative, blue range (lack of energy). But the truth is that a whole 65% of all measured values are in the red range, which is absolutely dramatic. If one remembers the BESA 1 BASIC test, one can assume that the test person is basically in a good and vital state of life. The red readings represent a total deregulation of these energy circuits. This means that the energy system of the organism in the test person sank into a severe degenerative crisis (high, pathological energy deficiency) after confrontation with the mRNA vaccine. During the confrontation with the mRNA vaccine, the test person also felt a strong pressure in the chest cavity! With permanent influences of such or similar interference fields, the energy system of the test person would suffer severe damage. For a balancing of these red readings or in other words: for a harmonisation of the values, the energy system needs either the exit from the area of the tested fields or a very strong positive impulse from outside. The comparisons of the BESA graphs confirm the stressful influences of the vaccine on the test person.

Diese This dramatic turnaround after confrontation of the test person with the mRNA vaccine can only be represented by the ingredients of this vaccine. To do this, it is necessary to look at the differences between the widely used COVID vaccines. For this purpose, a transparent presentation by Dr. Sherry Tenpenny - Cleveland from 2021 (www.dr.Tenpenny.com):

J&J - Johnson and Johnson - uses adenovirus and transgenes to produce the spike protein.



AZ - AstraZeneca - uses adenovirus and transgenes to make spike protein; high risk of blood clots

Pfizer and Moderna - use mRNA to produce spike protein

Spike protein - antigen on the surface of the SARS-CoV2 virus that binds to the ACE2 receptors on the surface of cells to invade organs and start replication.

Anti-S antibody - the antibody produced by the B cells of the immune system after they have been exposed to the spike protein. The antibody is supposed to bind the spike protein on the surface of the virus to prevent it from entering the cells. However, it is not known whether this actually happens.

The "Leela Quantum DNA & Cell Protector Card" as a test object will show whether it is able to build up enough antibodies to protect the cells from the S-protein.

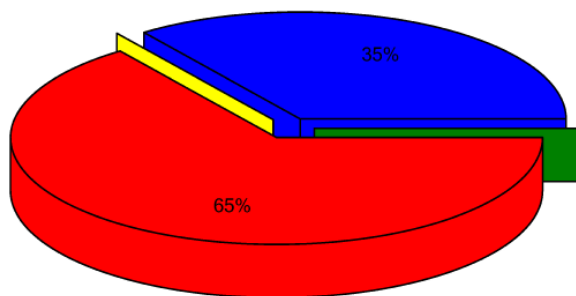
Dr Tenpenny commented:

"Approving these vaccines with novel RNA technology without extensive testing is extremely dangerous. The vaccine per se represents a bioweapon and could become even more dangerous than the original infection."

For this reason, we are starting this series of tests with higher-level BESA tests on the mRNA vaccine to show the full range of side effects, especially on the energy-informative side. .



Overview of BESA measuring



- Red: values with indicator decline
Decline greater than 2 (65%)
- Yellow: high values without indicator decline
Values over 70 ()
- Blue: low values
Values lower 50 (35%)
- Green: standard values
Values between 50 and 70 ()

BESA basic test

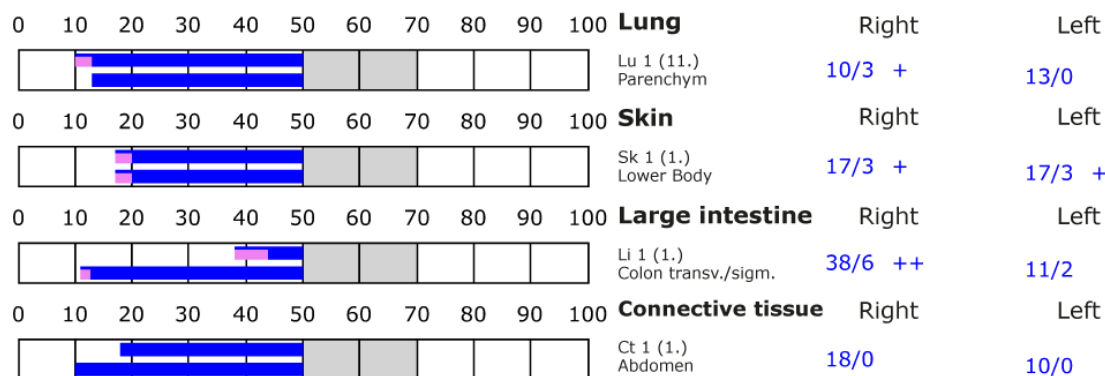
+++ : Indicator decline > 15 Skt.
++ : Indicator decline 6-15 Skt.
+ : Indicator decline 3-5 Skt.

T: Total inflammation (>89 Skt.)
P: Partial inflammation (70-89 Skt.)

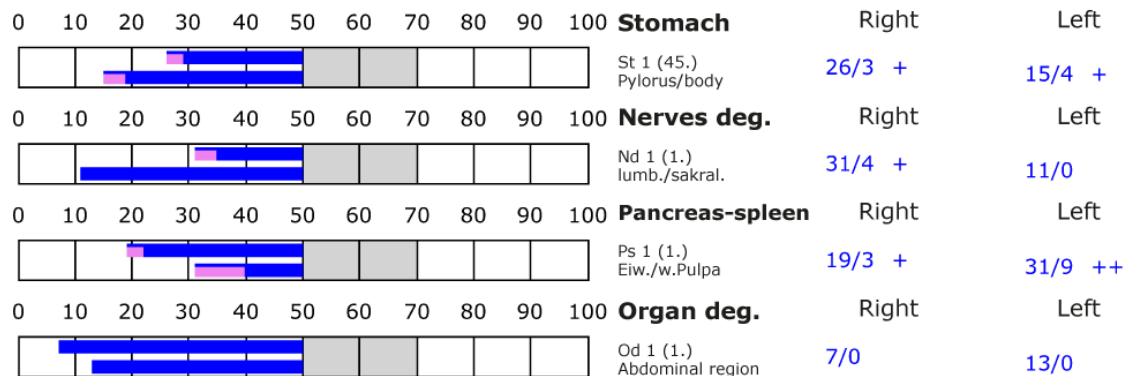
D: Degeneration (< 50 Skt.)

Standard values: (50-70 Skt.)

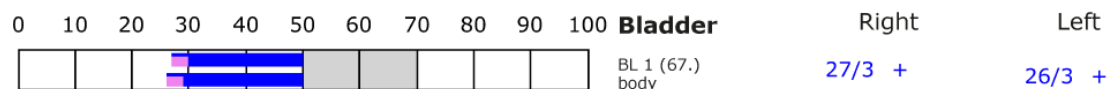
Element: lu - sk - li - ct



Element: st - nd - ps - od



Element: bl - ly - ki - al





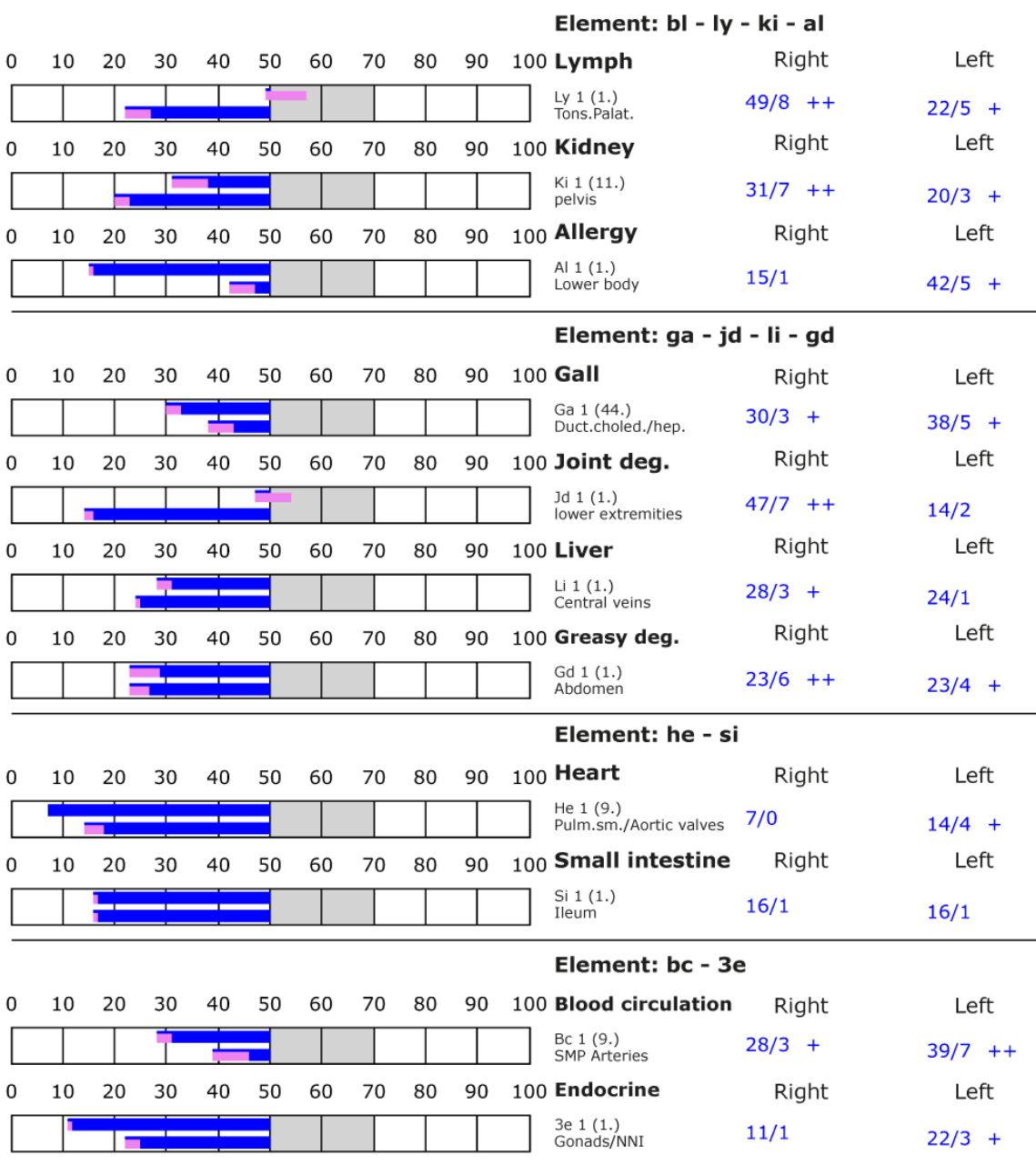
BESA basic test

+++ : Indicator decline > 15 Skt.
++ : Indicator decline 6-15 Skt.
+ : Indicator decline 3-5 Skt.

T: Total inflammation (>89 Skt.)
P: Partial inflammation (70-89 Skt.)

D: Degeneration (< 50 Skt.)

Standard values: (50-70 Skt.)





BESA 3 Test BEFORE

BESA 3 Test BEFORE; mRNA vaccine and EMSF in correlation with UVA- light in the range of 3.60 nm.

In the further course of the BESA test, the test person was again connected with the vaccine mentioned in the BESA 2 test BEFORE. In addition, a correlation of this vaccine with the UVA light was established.

Goal: To determine the reaction of the meridian system of the test person within the strong influence of the mRNA vaccine in correlation with the UVA light. To determine the differences compared to the BESA 2 test BEFORE.

BESA-Test evaluation P74 1.0
from **27-10-2021 at 16:23 to 16:29** (6 Minutes) page 19 and 20

result: The measurement result shows a further reduction of the measured values at the meridian end points or at the energetic system of the test person.

20 % in the red area

80 % in the blue area

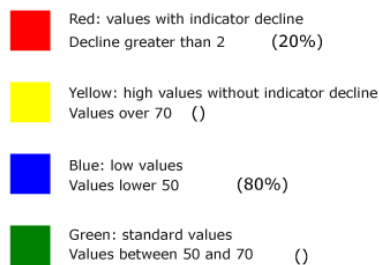
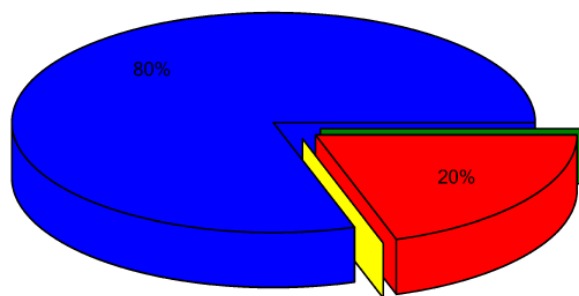
Conclusion: As the graphics show, after the introduction of the mRNA vaccine in correlation with the UVA light into the measuring circuit, almost all measuring points are in the degenerative, blue range (lack of energy). It can be seen that the red measured values were reduced by 2/3. However, in no way can one assume an improvement in the result. A closer look shows that almost all measured values are lower than 20 sct. This means that the energy deficit continues to spread. The influence of the UVA light confirms a certain correlation with the mRNA vaccine, which led to a further reduction of the originally great initial situation.

It is important to know that the effects can be represented on 3 different levels, the physical, the biochemical and the psycho-mental level.

On the physical level, an explanation of the situation tested in BESA 3 BEFORE can be found in the fact that the substances of the mRNA vaccines also contain nanoparticles, organised as nanosystems. They then react promptly as adjuvants in the body to magnetic or thermographic induction, both from outside and from inside (the body's own electromagnetic system). The control can take place via 5G (also smartphone) as can be seen in the upcoming BESA 4 test or as in our BESA 3 test BEFORE via UVA light (340 to 360nm - LED light). In case of permanent influences of such or similar interference fields or correlations, the energy system of the test person would suffer severe damage. The comparisons of the BESA graphs confirm the stressful influences of the vaccine on the test person.



Overview of BESA measuring



BESA basic test

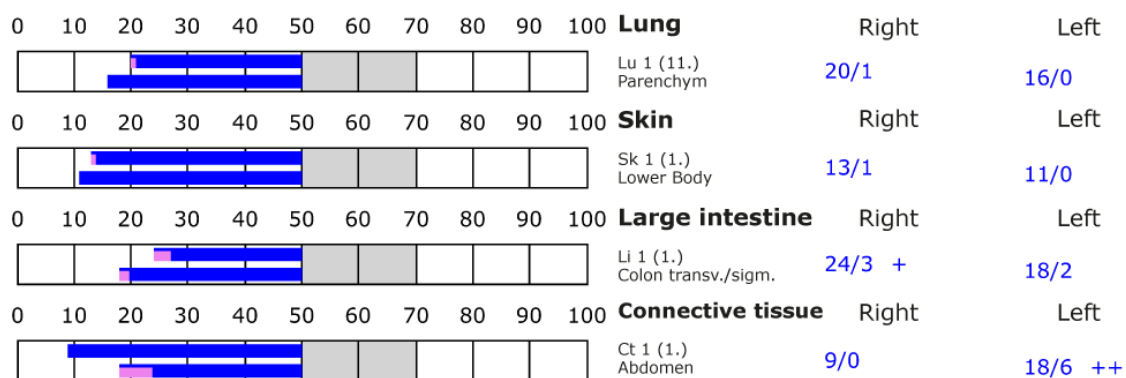
+++ : Indicator decline > 15 Skt.
++ : Indicator decline 6-15 Skt.
+ : Indicator decline 3-5 Skt.

T: Total inflammation (>89 Skt.)
P: Partial inflammation (70-89 Skt.)

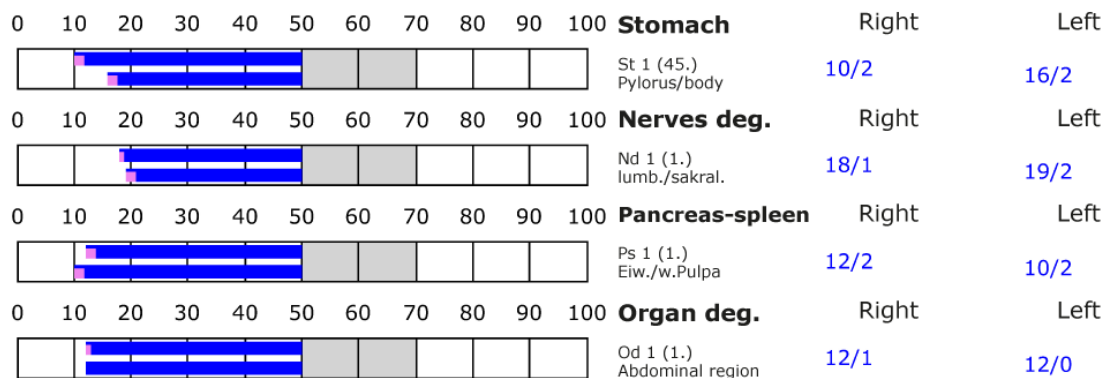
D: Degeneration (< 50 Skt.)

Standard values: (50-70 Skt.)

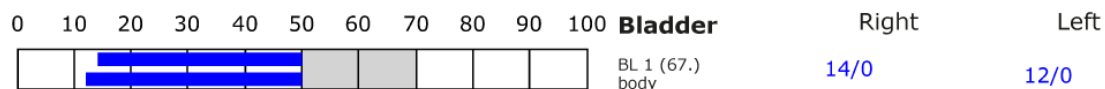
Element: lu - sk - li - ct



Element: st - nd - ps - od



Element: bl - ly - ki - al





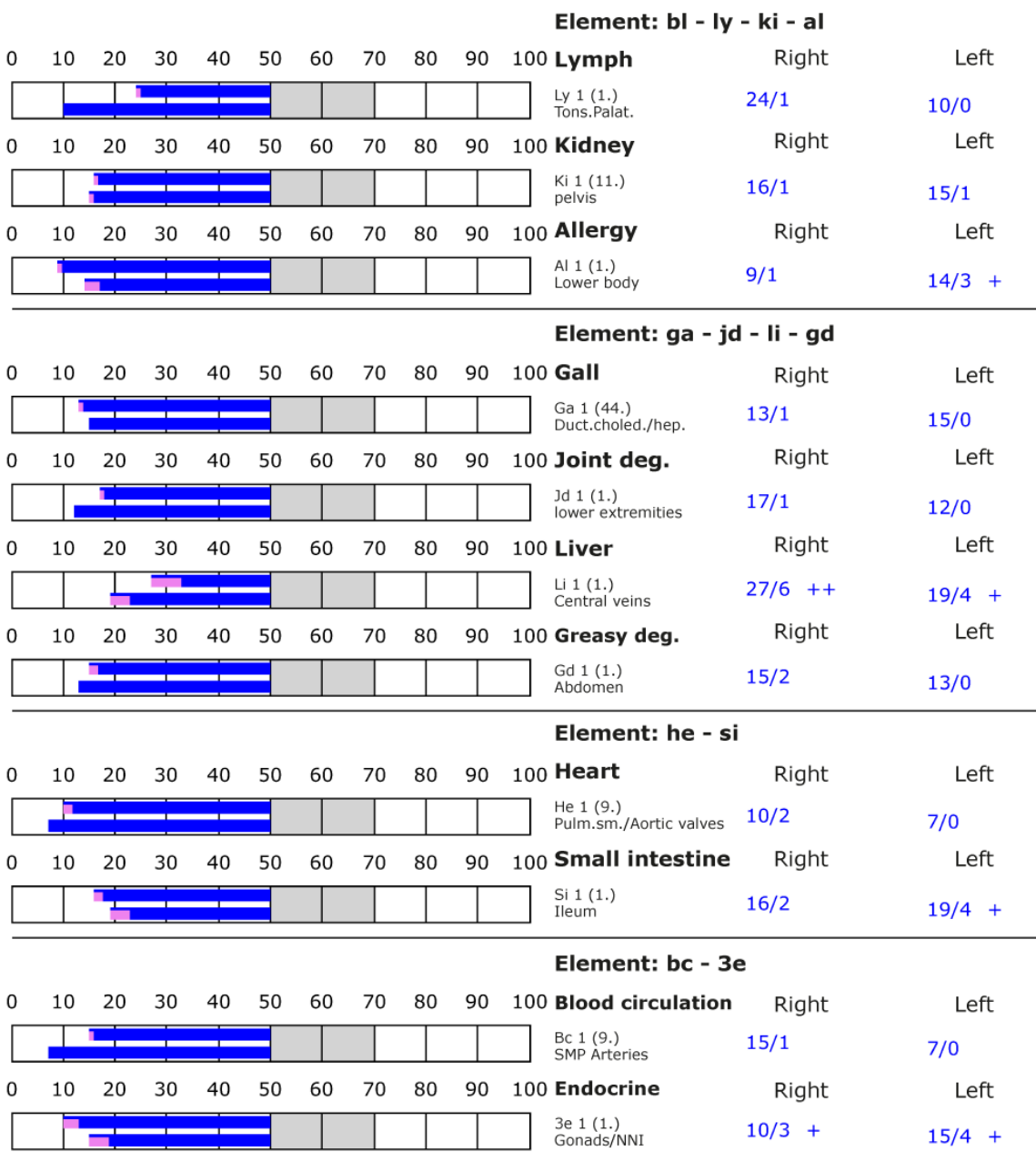
BESA basic test

+++ : Indicator decline > 15 Skt.
++ : Indicator decline 6-15 Skt.
+ : Indicator decline 3-5 Skt.

T: Total inflammation (>89 Skt.)
P: Partial inflammation (70-89 Skt.)

D: Degeneration (< 50 Skt.)

Standard values: (50-70 Skt.)





BESA 4 Test BEFORE

BESA 4 Test BEFORE; mRNA vaccine and the UVA- light and mobile phone radiation 5G

In the further course of the BESA test, the test person was again associated with the stress factors listed previously in the BESA 2+3 test. In this BESA test, the mobile phone radiation of a 5G mobile phone in the 3.6 GHz range is also correlated with the previously mentioned stress factors.

Goal: To determine the reaction of the meridian system of the test person within these strong external influences on the mRNA vaccine. Determination of the differences compared to the BESA 3 test BEFORE.

BESA-Test evaluation P74 1.0
from **27-10-2021 at 16:31 to 16:35** (4 minutes) Page 22 and 23

result: Compared to the BESA 3 test BEFORE, the measurement result shows a further reduction of the measured values at the meridian end points or at the energetic system of the test person.

30 % in the red area

70 % in the blue area

Conclusion: As the graphs show, after the introduction of the mRNA vaccine in correlation with the UVA light and the mobile phone radiation 5G into the measuring circuit, only 70% instead of 80% as in BESA 3 testing BEFORE of the measuring points are in the degenerative, blue range (energy deficiency). However, as can be seen, these are even lower than in the BESA test before. In addition, many measured values are again in the red range due to the phenomenon of the pointer dropping. The graphs also show that the red readings increased by 10%. So very low blue readings in the range of 10 skt. paired with many readings in the red range.

Let's take a practical look at this situation. Many people are almost exclusively in the area of UVA light (LED lighting or computer monitors or TV screens etc.) during their job or when shopping. Then another electromagnetic pulse from the smartphone, from an autonomous vehicle, from surrounding control systems at work or while shopping, etc. Although these BESA tests provide an optimal energy-information basis for the situation, it is almost inconceivable in the abstract what these high-frequency radiations in correlation with the contents of the mRNA vaccine can do to the human body.



Added to this is a fact that we have not yet grasped in this context, namely the effect of graphene. The Pfizer whistleblower Karen Kingston has discovered that PEGylated lipids (cationic lipids) form the lipid shell of the mRNA particles of the COVID vaccines for drug stimulation (we will deal with this in more detail in further BESA projects) and that these contain graphene oxide. Several scientific works show that graphene oxide is used in gene therapy as a platform for the introduction of biomolecules such as mRNA into cells. The background lies in its high electrical conductivity and its ability to penetrate cell membranes.

The crystalline and rectangular networks that form in the body fluid after mRNA vaccination and in the vaccine itself look like high-voltage antennas. These rectangular structures will be of further interest to us later, especially in the way they work.

Manchester is home to the National Graphene Institute, where extensive research was carried out at the university that proved the existence of graphene antennas for the first time.

It was shown that graphene liquid crystals form spontaneously in the presence of an external magnetic field (e.g. UVA light or 5G). Further scientific results showed that electric fields can change the crystal structure of graphene.

Graphene is seen as an enabling technology for 5G by graphene manufacturers such as Grolltex, who are looking at the future of graphene and 5G.

Graphene has also been successfully connected to neurons and graphene-based neurotechnologies have been and continue to be the subject of intense research.

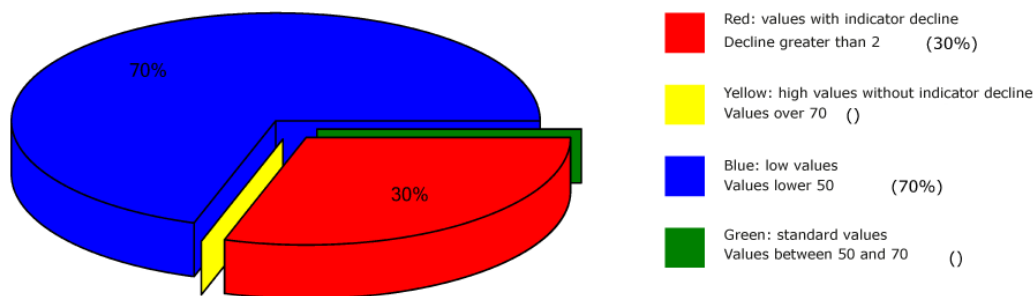
However, the study of the frenetic network of nanocrystals forming lattices and antenna-shaped fractals in a sample raises urgent questions:

What will happen when the mRNA particles of these COVID vaccines, disguised as PEGylated lipids and wrapped in a nano-monolayer of graphene oxide, enter the veins, cells and neurons of the human body? What will the consequences be, or do we already know them by now?

In the next BESA test, we will investigate the extent to which the "Leela Quantum DNA & Cell Protection Card" is able to harmonise these severe stress factors?



Overview of BESA measuring



BESA basic test

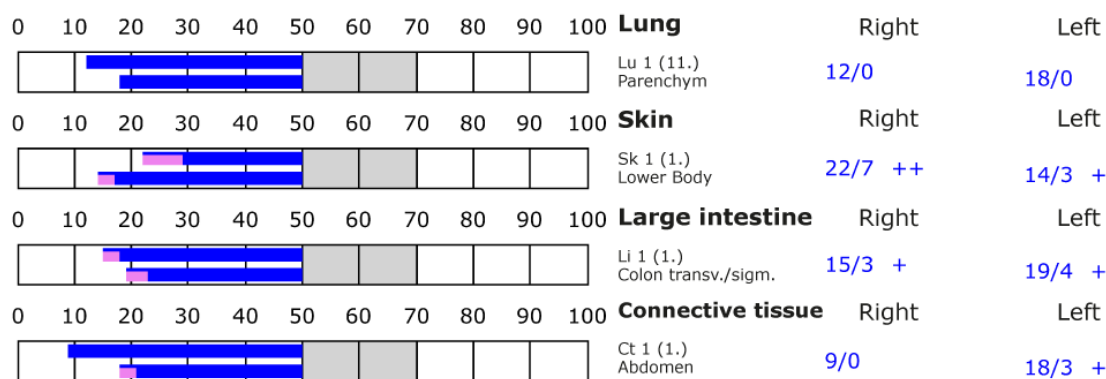
+++ : Indicator decline > 15 Skt.
++ : Indicator decline 6-15 Skt.
+ : Indicator decline 3-5 Skt.

T: Total inflammation (>89 Skt.)
P: Partial inflammation (70-89 Skt.)

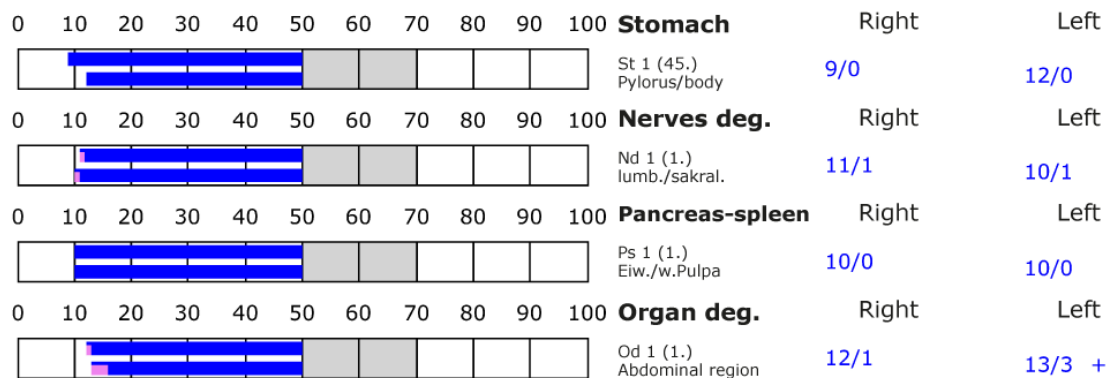
D: Degeneration (< 50 Skt.)

Standard values: (50-70 Skt.)

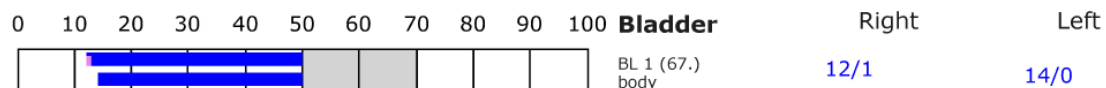
Element: lu - sk - li - ct



Element: st - nd - ps - od



Element: bl - ly - ki - al





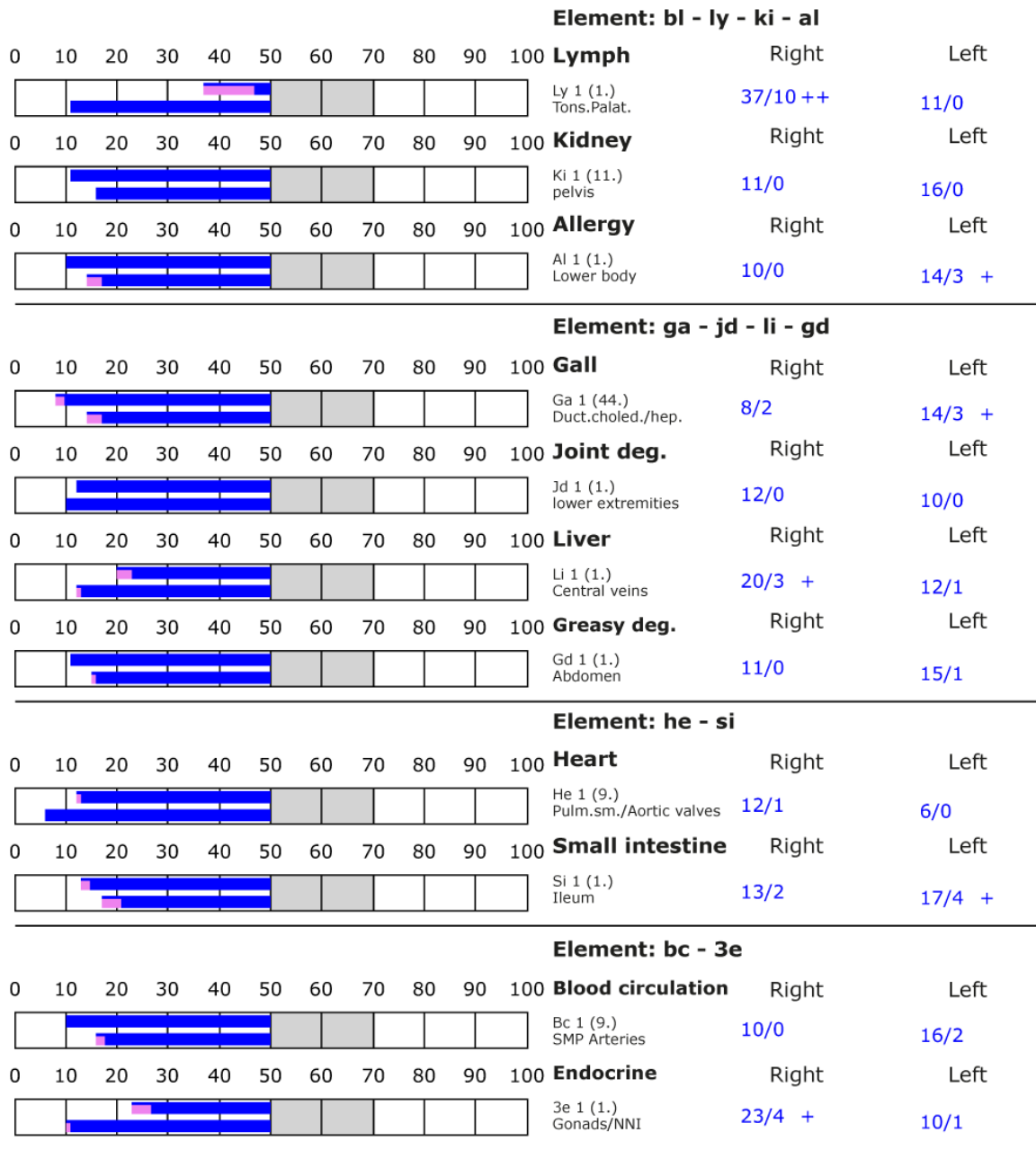
BESA basic test

+++ Indicator decline > 15 Skt.
++ Indicator decline 6-15 Skt.
+ Indicator decline 3-5 Skt.

T: Total inflammation (>89 Skt.)
P: Partial inflammation (70-89 Skt.)

D: Degeneration (< 50 Skt.)

Standard values: (50-70 Skt.)





BESA 5 Test AFTER

BESA 5 Test AFTER; mRNA vaccine and the UVA- light and mobile phone radiation 5G and the testobject „Leela Quantum DNA & Cell Protector Card“

In the further course of the BESA test, the test person was again exposed to the same stress factors as in the BESA 2-4 test. In contrast to the BESA 2-4 test BEFORE, the test object, the "Leela Quantum DNA & Cell Protector Card", is now also in the measuring circuit.

Goal: To determine the reaction of the test person's meridian system within these strong stress factors when the "Leela Quantum DNA & Cell Protector Card" is activated at the same time. Determination of the differences compared to the BESA 2-4 tests BEFORE.

BESA-Test evaluation P74 1.0
from **27-10-2021 at 16:44 to 16:51** (7 minutes) page 26 and 27

result: The measurement result shows significant improvements at the meridian end points or at the energetic state of the test person.

100 % in the green area

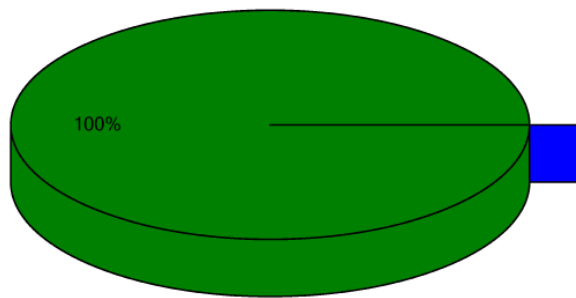
Conclusion: Wie As the graphics show, 2 minutes after inserting the "Leela Quantum DNA & Cell Protector Card" into the measuring circuit, all measuring points are in the green, optimal and harmonised range (balanced energy system). The BESA test results in a significant improvement of the energy situation in the meridian system of the test person compared to the BESA 2-4 tests BEFORE. It shows that the "Leela Quantum DNA & Cell Protector Card" is able to give the red readings (total deregulation) detected in the BESA 2-4 tests BEFORE a necessary impulse for harmonisation (neutralisation) into the life-promoting range in a very short time. The comparisons of the BESA graphs confirm the change and resolution of the stressed (red) acupuncture points on the meridian system of the test person.

This first detailed project shows that the test object, the "Leela Quantum DNA & Cell Protector Card" is able and suitable to create a harmonisation at the cell membrane as well as to protect the deeper structures of the cell up to the DNA from the effects of the ingredients of the vaccination.

The effects of the above-mentioned vaccinations on DNA in particular will be the task of further detailed projects.



Overview of BESA measuring



- Red: values with indicator decline
Decline greater than 2 ()
- Yellow: high values without indicator decline
Values over 70 ()
- Blue: low values
Values lower 50 ()
- Green: standard values
Values between 50 and 70 (100%)

BESA basic test

+++ : Indicator decline > 15 Skt.
++ : Indicator decline 6-15 Skt.
+ : Indicator decline 3-5 Skt.

T: Total inflammation (>89 Skt.)
P: Partial inflammation (70-89 Skt.)

D: Degeneration (< 50 Skt.)

Standard values: (50-70 Skt.)

Element: lu - sk - li - ct

0	10	20	30	40	50	60	70	80	90	100			
											Lung	Right	Left
											Lu 1 (11.) Parenchym	57/1	54/1
0	10	20	30	40	50	60	70	80	90	100	Skin	Right	Left
											Sk 1 (1.) Lower Body	58/2	51/0
0	10	20	30	40	50	60	70	80	90	100	Large intestine	Right	Left
											Li 1 (1.) Colon transv./sigm.	61/1	53/1
0	10	20	30	40	50	60	70	80	90	100	Connective tissue	Right	Left
											Ct 1 (1.) Abdomen	53/0	56/1

Element: st - nd - ps - od

0	10	20	30	40	50	60	70	80	90	100	Stomach	Right	Left
											St 1 (45.) Pylorus/body	58/2	56/1
0	10	20	30	40	50	60	70	80	90	100	Nerves deg.	Right	Left
											Nd 1 (1.) lumb./sakral.	54/0	52/0
0	10	20	30	40	50	60	70	80	90	100	Pancreas-spleen	Right	Left
											Ps 1 (1.) Eiw./w.Pulpa	51/0	51/1
0	10	20	30	40	50	60	70	80	90	100	Organ deg.	Right	Left
											Od 1 (1.) Abdominal region	51/0	52/1

Element: bl - ly - ki - al

0	10	20	30	40	50	60	70	80	90	100	Bladder	Right	Left
											BL 1 (67.) body	52/0	55/0














BESA basic test

+++ : Indicator decline > 15 Skt.
++ : Indicator decline 6-15 Skt.
+ : Indicator decline 3-5 Skt.

T: Total inflammation (>89 Skt.)
P: Partial inflammation (70-89 Skt.)

D: Degeneration (< 50 Skt.)

Standard values: (50-70 Skt.)

Element: bl - ly - ki - al													
0	10	20	30	40	50	60	70	80	90	100	Lymph	Right	Left
											Ly 1 (1.) Tons.Palat.	62/2	54/0
0	10	20	30	40	50	60	70	80	90	100	Kidney	Right	Left
											Ki 1 (11.) pelvis	52/0	54/1
0	10	20	30	40	50	60	70	80	90	100	Allergy	Right	Left
											Al 1 (1.) Lower body	54/1	52/0
Element: ga - jd - li - gd													
0	10	20	30	40	50	60	70	80	90	100	Gall	Right	Left
											Ga 1 (44.) Duct.choled./hep.	55/0	51/0
0	10	20	30	40	50	60	70	80	90	100	Joint deg.	Right	Left
											Jd 1 (1.) lower extremities	56/1	52/2
0	10	20	30	40	50	60	70	80	90	100	Liver	Right	Left
											Li 1 (1.) Central veins	51/0	55/1
0	10	20	30	40	50	60	70	80	90	100	Greasy deg.	Right	Left
											Gd 1 (1.) Abdomen	51/0	54/1
Element: he - si													
0	10	20	30	40	50	60	70	80	90	100	Heart	Right	Left
											He 1 (9.) Pulm.sm./Aortic valves	55/1	56/1
0	10	20	30	40	50	60	70	80	90	100	Small intestine	Right	Left
											Si 1 (1.) Ileum	55/0	55/0
Element: bc - 3e													
0	10	20	30	40	50	60	70	80	90	100	Blood circulation	Right	Left
											Bc 1 (9.) SMP Arteries	53/0	52/1
0	10	20	30	40	50	60	70	80	90	100	Endocrine	Right	Left
											3e 1 (1.) Gonads/NNI	57/1	53/0



The results of the BESA tests at a glance

Test person 1

BESA 1 Test BASIC BEFORE as status



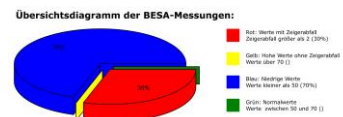
BESA 2 Test BEFORE with the vaccine



BESA 3 Test BEFORE with mRNA vaccine in correlation with UVA- light



BESA 4 Test BEFORE with mRNA vaccine in correlation with UVA- light and mobile phone radiation 5G



BESA 5 Test AFTER with mRNA vaccine in correlation with UVA- light and mobile phone radiation 5G and the „Leela Quantum DNA & Cell Protector Card,,





General information about the test result

The human being is a kind of receiving antenna for environmental information. This is because human life is fundamentally and exclusively dependent on environmental information. Our organism is biologically very sensitive where natural information (fields) is located or where this natural information is subject to interactions and fluctuations. The situation is all the more dangerous when such field-building structures are introduced (injected) into the body as nanoparticles via a so-called mRNA vaccine. **For this reason, detected informative electromagnetic interference fields are biologically highly relevant. Any reduction or transformation of these interference fields (ideally to 100 percent) is biologically very important, in the case of these tested vaccines even life-critical.** These information loads from the vaccine as well as from our artificial environment are only compatible with life if they can be readjusted to a natural fluctuation tolerance. Disturbances, problems, blockades, disharmonies in the biological control circuit of the human being find their causes in such disturbing electromagnetic information influences.

Neutralising or harmonising effects could be proven in this project P74 1.0 to determine the effect of the test object, the "Leela Quantum DNA & Cell Protector Card". The "Leela Quantum DNA & Cell Protector Card" was able to neutralise the biologically adverse effects and effects of the tested stress factors from the mRNA vaccine.

The significant ability of the test object "Leela Quantum DNA & Cell Protector Card" to neutralise and harmonise the stress factors from mRNA vaccine tested in this project P74 1.0 and to transform them into biological life-promoting goodness is proven by this project.

Authorized summary

Die The BESA tests carried out by IFVBESA on the energetic and physical effectiveness of the test object "Leela Quantum DNA & Cell Protector Card" have clearly shown that it is able to neutralise or harmonise biologically significant stress factors from an mRNA vaccine as well as special EMSF in correlation to this vaccine such as UVA light and mobile phone radiation 5G in the meridians or at the acupuncture points of the test person. The effect of the above-mentioned stress factors on the test person, his meridian system and his energetic-biological control circuit was questioned and systemically tested on the energetic level via the bioenergy-informative system analysis. The BESA tests BEFORE - AFTER show significant changes at the tested acupuncture points on the meridian system of the test person. The measurement data as well as their key figures impressively confirm on the one hand the stresses that the tested factors cause on the human organism, and on the other hand clarify how the deregulating energies are transformed into body-immanent and biocompatible energies after the application of the test object "Leela Quantum DNA & Cell Protector Card".

From a holistic point of view, it can be assumed that the positive effect on the test subjects also occurs in other people. The fact that the positive influence of the "Leela Quantum DNA &



Cell Protector Card" is actually possible with high precision is clearly shown by this test through the BESA-PRE-AFTER-AFTER comparison. All measured values improved significantly from the mostly 100-percent blue measuring range to the green mostly 50-second range (scale value), i.e. the range of optimal measured values. This means that an optimal regulation dynamic has taken place. In the sense of the IFVBESA, one can clearly speak of an optimal, significant improvement of the body's own energy situation.

Result

The test person was brought into contact with the heavily loaded mRNA vaccine as well as in correlation with special EMSF during the BESA AFTER test in each case. In contrast to the BESA BEFORE tests, in which the test object "Leela Quantum DNA & Cell Protector Card" was not used, positive measurement results were found throughout, indicating that neutralisation or harmonisation had taken place. The regulatory dynamics developed into an optimal effective range.

By demonstrating the energy-informative effectiveness of the test object "Leela Quantum DNA & Cell Protector Card" in this project P74 1.0, the requirements for obtaining a BESA seal of approval by the International Professional Association for BESA were met.