



# IFVBESA

Information is crucial

**P75 1.0 BESA-Project**  
for various pets

**Leela Quantum Infinity Bloc**



## Project P75 1.0 to BESA Expertice

Bioenergy informative system analysis within the framework  
of the BESA seal of approval on the efficacy  
of the product „Leela Quantum Infinity Bloc“  
for „various pets“  
also referred to as „test object“ in the project





**Client:**

Company Leela Quantum Tech, LLC  
Attn: Eleonora Goldenberg  
1421 LUISA STREET, STE G  
SANTA FEE, NM 87505  
USA

**Project participants:**

**Project leader:** Wolfgang Hans Albrecht, präsident and scientific director of the IFVBESA

**Test person:** Eva Krankl, vicepräsident and deputy scientific direktor of the IVFBESA

**Respondent (Proband):** 8 Pets as subjects with correspondingly different ages and health conditions.

Respondent 1:	Cat Bubi at the age of 8 years
Respondent 2:	Cat Mia at the age of 8 years
Respondent 3:	Cat Kaspar at the age of 18 years, decrepit
Respondent 4:	Female dog Felicita at the age of 8 years
Respondent 5:	Dog (male) Samy at the age of 8 months
Respondent 6:	Horse Ducesse (gelding) at the age of 27 years, decrepit
Respondent 7:	Horse Ravelle (mare) at the age of 17 years
Respondent 8:	Goat Klara at the age of 3 years

**other participants:** none

**Project location:** Location of the IFVBESA (international professional association for bioenergetic system analysis), Hauptstraße 1, A-4861 Kammer/Schörfling am Attersee

**Date:** 26.11.2021 until 26.01.2022

**Project duration:** 61 days



## Content

BESA-Legende zur Interpretation der BESA-Messergebnisse.....	5
Research support services of the IFVBESA - BESA reference tests .....	8
Research project description .....	8
Test procedure .....	10
The results of the BESA tests at a glance.....	59
Generell information about the Test result.....	61
Authorized Summary .....	61

## Importent notes

The client has the right to exploit this expert opinion. Irrespective of this, this expert opinion constitutes intellectual property of IFVBESA as the contractor. The contractor is entitled to use this project or the resulting expert opinion elsewhere if this does not violate the client's data protection and duty of confidentiality. Apart from this, this project/appraisal, with the exception of the "authorised abridged version", may not be altered or passed on in abridged form without the consent of the IFVBESA. The assignment for this project refers to bioenergy-informatively measurable values and their interpretation according to the guidelines of BESA or the IFVBESA. The maintenance of the quality of the tested products as well as their regular control are the task and responsibility of the client. The investigation of the manufacture, the mechanism of action or interpretations of the client's products to third parties are not the responsibility or task of the contractor. Video recordings may only be made with the permission of the IFVBESA.



## BESA-Legende zur Interpretation der BESA-Messergebnisse

The measured value of 50 on the tested meridian represents an optimal energetic state in this organ or its subordinate and superordinate levels. Also measured values in the range of 50 to max. 70 still count as a neutral and balanced energy status. The organism is able to regulate irritations of the system (wrong environmental signals) very well.

Measured values above 70 to 100 represent the inflammatory range or a so-called energy surplus as a reaction to the irritations of the system by corresponding environmental signals. After reaching the maximum values, the energy state tips into the degenerative (blue) range.

Measured values from below 50 to around 0 represent the so-called degenerative measuring range or a lack of energy as a reaction to the stimulation of the system by corresponding environmental signals.

Measured values represented by a so-called pointer drop of more than 3 scale lines indicate total deregulation. The influence of certain environmental signals then leads to such strong system overloads, which can only be brought into harmonization by corresponding new signals.

The orange readings represent a resonance of the tested substances (electronic honeycomb contents) in the respective retrieved bioenergy informative control circuits as well as in its subordinate or superordinate structures.

### BESA Key figures:

- up 0,79** very deep energetic regulatory disorder (SSD) energy deficiency
- 0,8 to 1,19** strong energetic regulation disturbance (SD) degeneration/energy deficiency
- 1,2 to 1,59** energetic regulation disorder (D) degeneration/energy deficiency
- 1,6 to 1,99** degenerative transition area (DÜ)
- 2,0 to 2,39** optimal regulation (OR)
- 2,4 to 2,79** in the regulation (R)
- 2,8 to 3,19** partial inflammation = regional energy excess (PE)
- from 3,2** total inflammation = strong general energy surplus (TE)





## Basic of the research project creation P75 1.0

The international professional association for bioenergetic system analysis was commissioned by the company Leela Quantum Tech LLC to test or prove the effect of the test object "Leela Quantum Infinity Bloc" towards pets by means of bioenergetic system analysis (BESA). The testing took place independently of the subjective feeling of the test person.

### **Description of the „Leela Quantum Infinity Bloc“ by the client:**

A "Leela Quantum Infinity Bloc", like the Leela Quantum Bloc, is a tool and technology that contains or provides a concentrated quantum energy space in the space between the golden plates. Therefore, it can also be called a quantum energy generator or quantum space generator. It is the first device on the market that cannot be made better by using other available tools, devices or quantum energy generators. On the contrary, it can make any other device or product better because of its sophisticated energetic nature. The "Leela Quantum Infinity Bloc" is 6.5 times more powerful and faster in capacity than the Quantum Bloc.

### **What can the Infinity Bloc do/what does it help with?**

It is literally impossible to list all the areas that the "Leela Quantum Infinity Bloc" can support, optimize and/or help with. Here we list a few topics, all of which have been proven through testing, testimonials and third party studies:

- it can harmonize the energy in a house, a restaurant or a workspace
- it creates an energetic feng shui for any room in which it is placed
- it harmonizes and neutralizes EMF (3G, 4G, 5G, WiFi, microwaves, etc.)
- it neutralizes negative frequencies
- it can neutralize harmful frequencies in water and snow caused by chemtrails and other environmental influences (e.g. aluminum, zinc and various alpha and beta radiation particles)
- any object into which the "Leela Quantum Infinity Bloc" fits can be charged with pure and dynamic quantum energy
- any frequency can be copied into any object that fits into the infinity bloc. However, we recommend the "Leela Quantum Infinity Bloc" for frequency transfers. Due to the enormous strength of the "Leela Quantum Infinity Bloc", it is not so well suited for frequency transfers, although frequency transfers are possible. However, they require special attention and some basic training to do so with a "Leela Quantum Infinity Bloc".
- one can structurally enhance and optimize any product that fits into an Infinity Bloc, e.g. water, other beverages, food, groceries, and even products like tennis rackets, water bottles, etc.



- one can create one's own quantum energy and/or frequency products for oneself, one's family and/or close friends
- one can support all plants, seedlings or trees in the house and/or garden with the energy of the "Leela Quantum Infinity Bloc". Furthermore, one can use the "Leela Quantum Infinity Bloc" to use the water to water the plants or even charge their pipes or hoses, etc.
- one can perform non-commercial quantum entanglement with a "Leela Quantum Infinity Bloc". With the "Leela Quantum Infinity Bloc" it is important that the energy is not charged or transferred for too long.
- and many more applications more...

The **range of the first** "Leela Quantum Infinity Bloc" is about 1,000 meters in all directions.

### **Polarity**

There is no polarity in the "Leela Quantum Infinity Bloc". Magnets add pressure, instability and a certain type of alignment to a quantum field, so the energy of a magnet supported quantum field is a "trapped" and almost confined energy force that cannot flow freely and is constantly fighting with the magnetic field. Energetically, the field must constantly recharge itself. The instability, disharmony and energetic pressure can be felt and "seen" in such devices, and they affect everything around them.

The "Leela Quantum Infinity Bloc" is a groundbreaking new quantum energy generator that provides not only a one-dimensional quantum field, but a truly multi-dimensional quantum space, and is also very powerful. It is also not bound in any way to the Earth's magnetic fields and can therefore be considered (and energetically looks like) a quantum sun, as it radiates and transmits freely in all directions without Earth-bound flux. The "Leela Quantum Infinity Bloc" is dynamic, harmonic, always stable, and retains these properties when quantum energy concentration and consciousness/perspective levels are increased (infinity block package). Although the use of a "Leela Quantum Infinity Bloc" involves some responsibility, it should be known that the energy is always balanced and harmonious.

### **Transfer of frequencies**

Within just 10 seconds, any frequency can be copied and transferred to another object using the Leela Infinity Bloc. Literally any frequency can be copied. One can build their own library of different frequencies and/or copy a frequency of choice into an object. For example, one can copy the frequency of incense into a pendant or a t-shirt to benefit from the incense frequency while wearing the t-shirt or pendant. Another example would be to choose a Leela Quantum frequency card and copy the frequency(s) into a watch, food, glass of water, jewelry, etc.



## **Animals also benefit from the "Leela Quantum Infinity Bloc"**

Not only humans benefit from the positive effects of quantum energy. Animals can also sense the frequencies and use them very well for themselves, as long as they are tuned to their needs.

These indications should be an interpretation about the extent of the effect of the test object and an indication of its holistic, i.e. holistic, orientation. The effect of the Leela Quantum Infinity Bloc" can thus be well achieved for the animals.

The concept of this test object should therefore be to harmonize, neutralize disturbances, problems, blockades, disharmonies in the environment of the animals and thus to replace negative states by positive states. Due to its mode of operation, the test object for the pets results in a simple and yet very effective field of application.

According to the information of the pet owners, the pets are free of diseases. Only proband 3, the tomcat Kaspar, aged 18, feels weak and suffers from a permanent enlargement of the pancreas. The gelding, subject 6, a former show horse aged 27, feels tired and partly refuses to ride because of listlessness.

## **Research support services of the IFVBESA - BESA reference tests**

The project P75 1.0 deals specifically with the proof of effect of the test object "Leela Quantum Infinity Bloc" - in the further test also referred to as test object, against various domestic animals, in the project referred to as test persons.

The "Leela Quantum Infinity Bloc" is tested according to the request of the client within the framework of the valid conditions of the IFVBESA for the award of quality seals. In principle, seals of approval are awarded in three categories depending on the significance of the test results, taking into account all tests of a project. For the "Leela Quantum Infinity Bloc" it is to be determined whether by its application mentioned stresses from the typical environmental influences and as a consequence in the energy system of the test persons (biological system of the animals) arising or existing disturbances, problems, blockades, disharmonies can be harmonized, neutralized and thus negative pathological conditions can be replaced by positive conditions. This will be questioned in the following commissioned tests of this project.

## **Research project description**

The purpose of the test is to prove the functionality of the "Leela Quantum Infinity Bloc" through test results obtained by subjecting the test subjects to a BESA baseline test in a BEFORE measurement and then connecting and testing them with the test object, the corresponding "Leela Quantum Infinity Bloc", in the AFTER measurement.

- The BEFORE measurements are performed without the "Leela Quantum Infinity Bloc"





- The AFTER measurements are performed with the "Leela Quantum Infinity Bloc"

**The question** for each AFTER measurement was: "Is the "test object" suitable and able to harmonize or neutralize the thus perceived stressful effects on the organism of the animals from the BEFORE measurements"?

The correspondingly designed tests should provide information about this by comparing the BEFORE measurements without the "Leela Quantum Infinity Bloc" with the test results of the AFTER measurements to be carried out using the "Leela Quantum Infinity Bloc".

The client's concern is to determine whether the test object, the "Leela Quantum Infinity Bloc", as noted in the product description, is suitable for harmonizing the disturbances, problems, blockages, disharmonies in the meridian system of the test person (biological object - animals) resulting from the BEFORE measurements.

#### General information transmission of the test object

The information transfer takes place from the hyperspace of the test object to the hyperspace of biological objects (humans, animals, plants). From there the information reaches the reference space or the energy space via so-called interaction channels. This is a union of, among others, all organs and energy forms in the biological object. There, the information of the program can dynamically materialize and thus change current states. The changes can show themselves in the form of neutralizations or harmonizations of disturbances, the dissolution of problems, blockages and disharmonies.

#### **Conditions:**

BESA tests are performed in the premises of IFVBESA under laboratory conditions, at room temperature 20°Celsius, on natural wooden floor. In principle, the test persons are deswitched (made testable) before the BESA tests or the test possibility is questioned with the test persons. Since the test subjects are animals, the animals are tested via a so-called surrogate (full substitute for the animals). Another human being serves as a surrogate, through which the meridian system of the animal is interrogated.

- |              |  |
|--------------|--|
| <b>Pos.1</b> | BESA 1 testing Basic (bioenergetic status) on the test subjects (animals)  |
| <b>Pos.2</b> | BESA testing with confrontation of the test subjects (animals) with the test object, the corresponding "Leela Quantum Infinity Bloc" |
| <b>Pos.3</b> | Evaluation of the results in the project as well as summary in a corresponding expert opinion according to the sample                |

#### **Procedure and specifications for the execution**

1. **BESA-basic measurement of the test persons (animals)** at all previously determined measuring points (TING points of the surrogate) serve to determine the actual condition. The results are determined exactly according to the BESA specifications and documented via the BESA graphs.



## 2. Activation of the "Leela Quantum Infinity Bloc" test object"

- 2.1. When the corresponding "Leela Quantum Infinity Bloc" is **activated**, it is applied as specified by the client and thus activated in the measurement area.
- 2.2. The test persons are brought into contact with the "Leela Quantum Infinity Bloc" by quantum entanglement. The measuring points mentioned under point 1 are measured in the same order and time duration to determine the current energy state. The results are determined exactly according to the BESA specifications and documented via the BESA graphs.

## Test procedure

### **BESA 1 Testing BASIC BEFORE as a status**

In the first step, a basic bioenergetic test (bioenergetic status) is performed on the meridian end points (TING points of the surrogate) of the test subjects (animals).

### **BESA 2 Testing AFTER with the „Leela Quantum Infinity Bloc“**

In the second BESA test, the test subjects are connected to the "Leela Quantum Infinity Bloc" via quantum entanglement, or rather, the test object is activated in this way via the measuring circuit with respect to the respective pets. Now the question is: How does the meridian system of the test persons react as a surrogate for the animals within the effective range of the "Leela Quantum Infinity Bloc"?



## Respondent 1 – Cat Bubi

### BESA 1 Testing BASIC BEFORE

#### BESA 1 Testing BASIC BEFORE as status

Eva Krankl performed a basic BESA measurement on the test person (tomcat Bubi), as a surrogate of the animal. All BESA tests were performed on the TING points of the surrogate (40 nail fold points on the fingers and toes).



**Goal:** To establish a basic test (status) to show the initial energetic situation for all further BESA tests.

BESA-Test evaluation P75 1.0

from **26-11-2021 at 12:09 to 12:21** (12 minutes) page 11 and 12

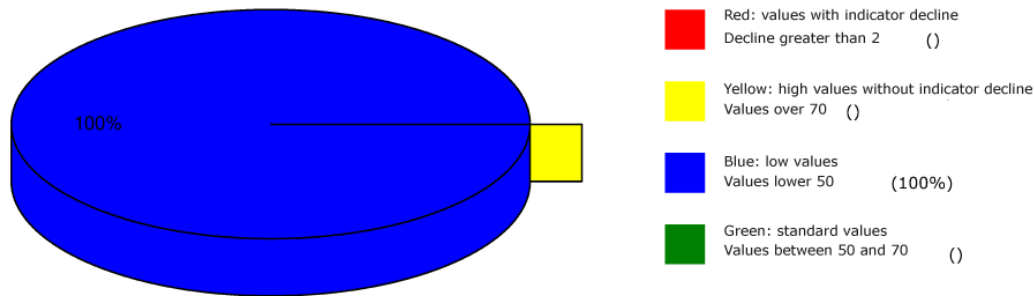
**Result:** The measurement result indicated energetic stresses at the meridian end points and subsequently on the subordinate metabolic situation of the test person.

**100 % in the blue area**

**Conclusion:** As the graphs show, all measurement points are in the degenerative blue range (energy deficiency). These readings interpret a moderate lack of energy at each of the acupuncture points tested. The comparisons of the BESA graphs confirm the stressful influences on the energy-informative events in the meridian system of the test person.



## Overview of BESA measuring



## BESA basic test

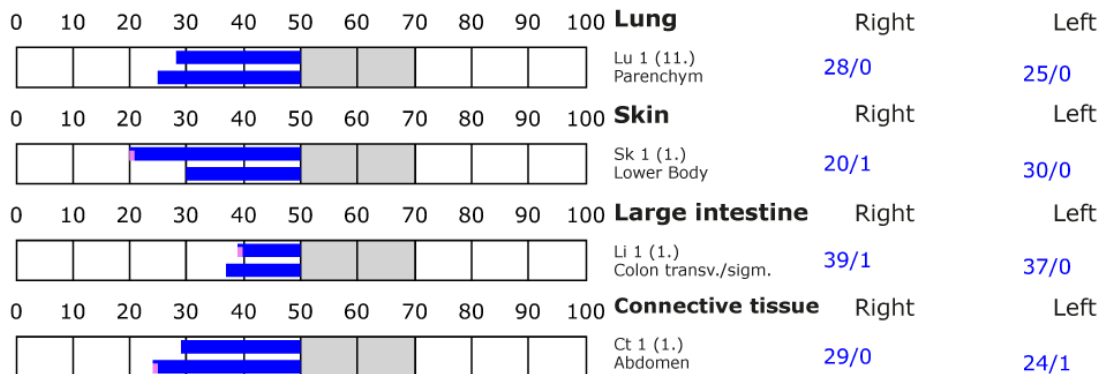
+++ : Indicator decline > 15 Skt.  
++ : Indicator decline 6-15 Skt.  
+ : Indicator decline 3-5 Skt.

T: Total inflammation (>89 Skt.)  
P: Partial inflammation (70-89 Skt.)

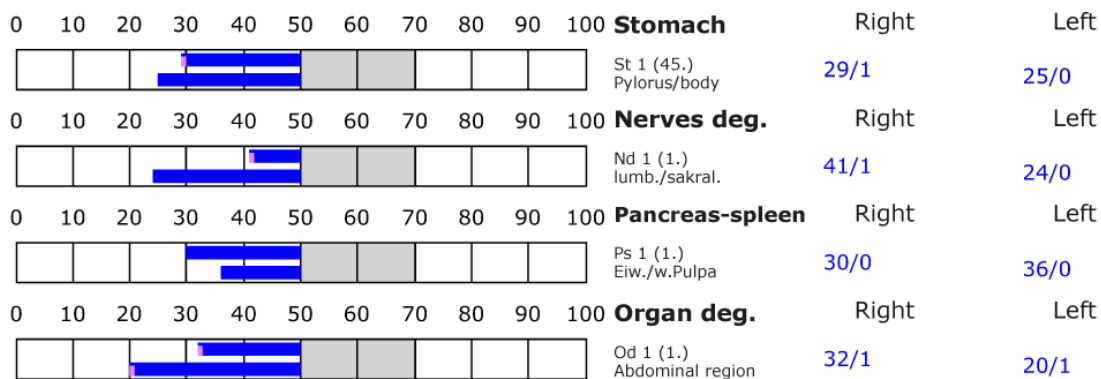
D: Degeneration (< 50 Skt.)

Standard values: (50-70 Skt.)

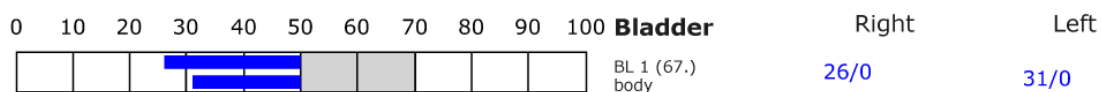
### Element: lu - sk - li - ct



### Element: st - nd - ps - od



### Element: bl - ly - ki - al





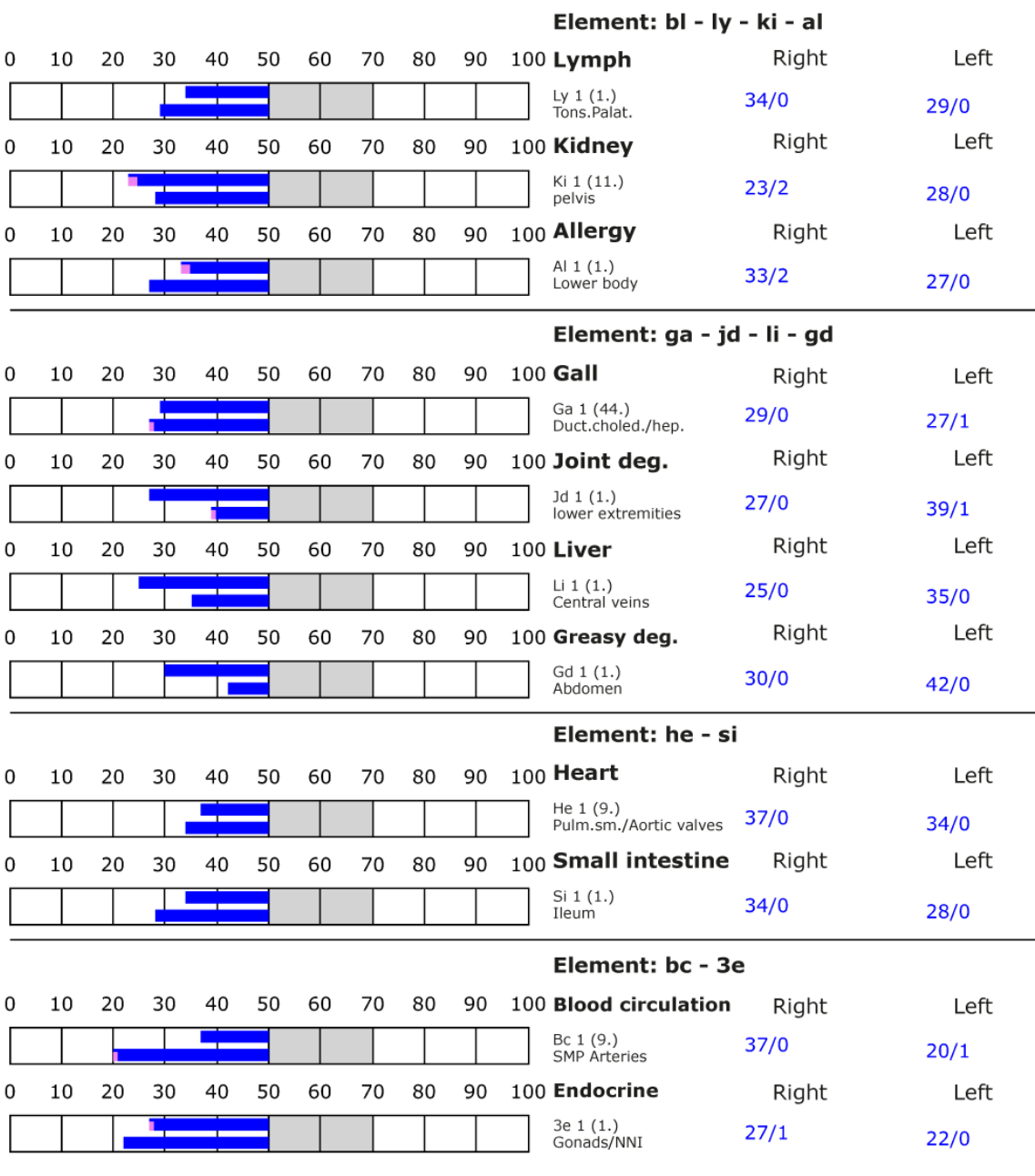
## BESA basic test

+++ : Indicator decline > 15 Skt.  
++ : Indicator decline 6-15 Skt.  
+ : Indicator decline 3-5 Skt.

T: Total inflammation (>89 Skt.)  
P: Partial inflammation (70-89 Skt.)

D: Degeneration (< 50 Skt.)

Standard values: (50-70 Skt.)





## BESA 2 Testing AFTER

### BESA 2 Testing AFTER with the „Leela Quantum Infinity Bloc“

In the further course of the BESA test, the tomcat Bubi was associated as a photograph via quantum entanglement with the test object, the "Leela Quantum Infinity Bloc". After an effect duration of 10 minutes, Eva Krankl performed BESA testing on the test subject as a surrogate for the tomcat Bubi. This means that the test object was activated in this way for the test person.

**Goal:** Determination of the reaction of the meridian system of the test person (tomcat Bubi) in connection with the test object. Can the "Leela Quantum Infinity Bloc" neutralize the bioenergy informative system of the test person (tomcat Bubi)? Determination of the differences of BESA 2 testing AFTER compared to BESA 1 testing BEFORE.

BESA-Test evaluation P75 1.0  
from **13-01-2022 at 16:29 to 16:50** (20 minutes) page 15 and 16

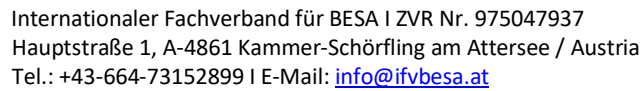
**Result:** The measurement result shows significant improvements in the meridian end points or in the energetic state of the test person - tomcat Bubi.

**100 % in the green area**





**Conclusion:** As the graphics show, 10 minutes after confrontation of the test person - tomcat Bubi with the "Leela Quantum Infinity Bloc" all measuring points are in the green, optimal and harmonized area (balanced energy system). The BESA test results in a significant improvement of the energy situation in the meridian system of the test person - tomcat Bubi compared to the BESA 1 tests BEFORE. All measured values were at 50 Skt or just above. It can be seen that the "Leela Quantum Infinity Bloc" is able in a very short time to give the deregulations detected in the BESA 1 tests BEFORE the necessary impulse for harmonization (neutralization) into the life-promoting range. The comparisons of the BESA graphs confirm the change and harmonization of the stress factors on the meridian system.

These BESA 2 tests show that the test object, the "Leela Quantum Infinity Bloc" is basically able and suitable to produce a harmonization of the stressful information.





A 3D pie chart with a single green slice representing 100%. The text '100%' is written inside the green slice. A small blue rectangular tab is visible on the right edge of the chart.

-  Red: values with indicator decline  
Decline greater than 2 (%)
-  Yellow: high values without indicator decline  
Values over 70 (%)
-  Blue: low values  
Values lower 50 (%)
-  Green: standard values  
Values between 50 and 70 (100%)

- +++ : Indicator decline > 15 Skt.
- ++ : Indicator decline 6-15 Skt.
- +: Indicator decline 3-5 Skt.

T: Total inflammation (>89 Skt.)  
P: Partial inflammation (70-89 Skt.)

D: Degeneration (< 50 Skt.)

Standard values: (50-70 Skt.)

0	10	20	30	40	50	60	70	80	90	100		Right	Left
											<b>Lung</b> Lu 1 (11.) Parenchym	52/0	51/0
											<b>Skin</b> Sk 1 (1.) Lower Body	52/0	51/1
											<b>Large intestine</b> Li 1 (1.) Colon transv./sigm.	50/0	50/0
											<b>Connective tissue</b> Ct 1 (1.) Abdomen	51/1	51/1

											Right	Left	
<div> <div>0102030405060708090100</div> <div> </div> </div>											<b>Stomach</b> St 1 (45.) Pylorus/body	51/0	50/0
<div> <div>0102030405060708090100</div> <div> </div> </div>											<b>Nerves deg.</b> Nd 1 (1.) lumb./sakral.	52/1	53/1
<div> <div>0102030405060708090100</div> <div> </div> </div>											<b>Pancreas-spleen</b> Ps 1 (1.) Eiw./w.Pulpa	53/1	50/1
<div> <div>0102030405060708090100</div> <div> </div> </div>											<b>Organ deg.</b> Od 1 (1.) Abdominal region	50/1	52/1

0 10 20 30 40 50 60 70 80 90 100 **Bladder** Right Left

BL 1 (67.) body 51/1 52/2



## BESA basic test

+++ : Indicator decline > 15 Skt.

++ : Indicator decline 6-15 Skt.

+: Indicator decline 3-5 Skt.

T: Total inflammation (>89 Skt.)

P: Partial inflammation (70-89 Skt.)

D: Degeneration (< 50 Skt.)

Standard values: (50-70 Skt.)

Element: bl - ly - ki - al										
0	10	20	30	40	50	60	70	80	90	100
										</



## Respondent 2 – Cat Mia

### BESA 1 Testing BASIC BEFORE

#### BESA 1 Testing BASIC BEFORE as status

Eva Krankl performed a basic BESA measurement on the test person (cat Mia), as a surrogate of the animal. All BESA tests were performed on the TING points of the surrogate (40 nail fold points on the fingers and toes).



**Goal:** To establish a basic test (status) to show the initial energetic situation for all further BESA tests.

BESA-Test evaluation P75 1.0

from **26-11-2021 at 20:59 to 21:03** (4 minutes) page 18 and 19

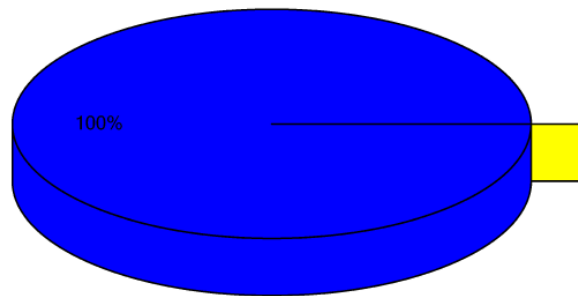
**Result:** The measurement result indicated energetic stresses at the meridian end points and subsequently on the subordinate metabolic situation of the test person.

**100 % in the blue area**

**Conclusion:** As the graphs show, all measurement points are in the degenerative blue range (energy deficiency). These readings interpret a moderate lack of energy at each of the acupuncture points tested. The comparisons of the BESA graphs confirm the stressful influences on the energy-informative events in the meridian system of the test person.



## Overview of BESA measuring



- Red: values with indicator decline  
Decline greater than 2 ( )
- Yellow: high values without indicator decline  
Values over 70 ( )
- Blue: low values  
Values lower 50 (100%)
- Green: standard values  
Values between 50 and 70 ( )

## BESA basic test

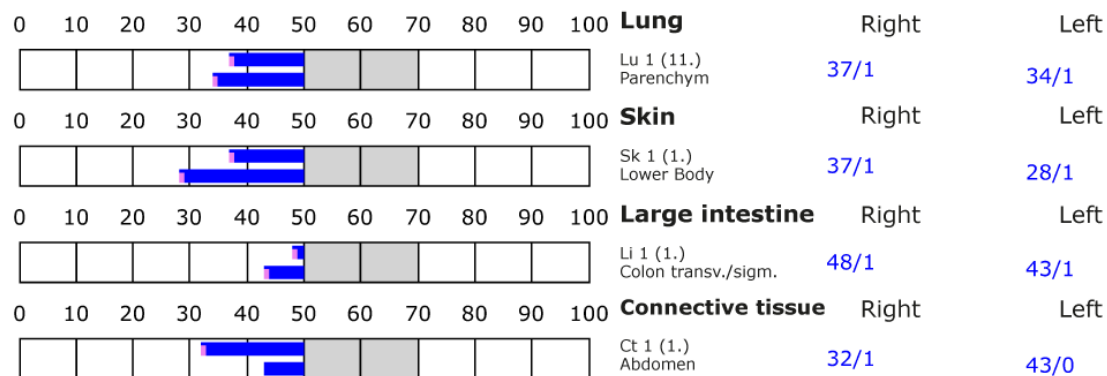
+++ : Indicator decline > 15 Skt.  
++ : Indicator decline 6-15 Skt.  
+ : Indicator decline 3-5 Skt.

T: Total inflammation (>89 Skt.)  
P: Partial inflammation (70-89 Skt.)

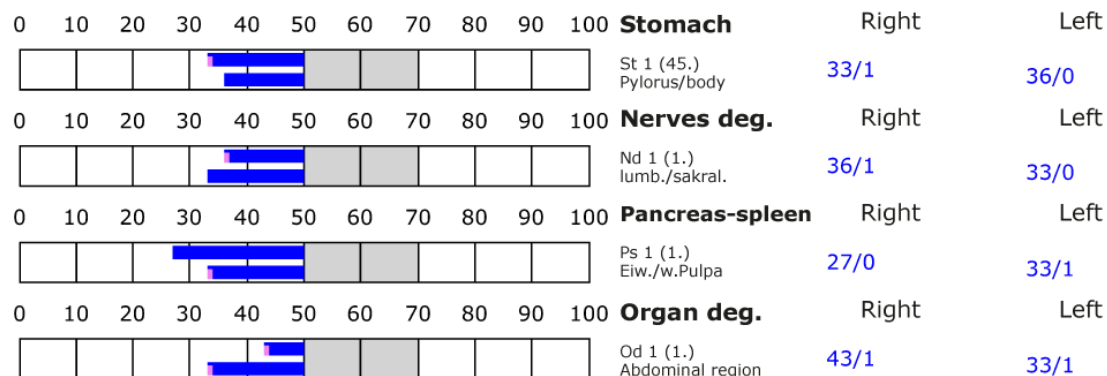
D: Degeneration (< 50 Skt.)

Standard values: (50-70 Skt.)

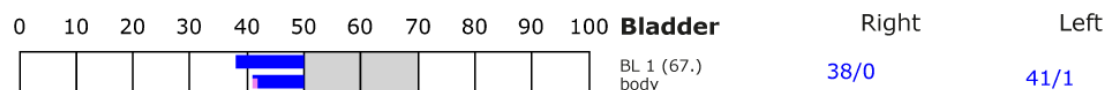
### Element: lu - sk - li - ct



### Element: st - nd - ps - od



### Element: bl - ly - ki - al





## BESA basic test

+++ : Indicator decline > 15 Skt.

++ : Indicator decline 6-15 Skt.

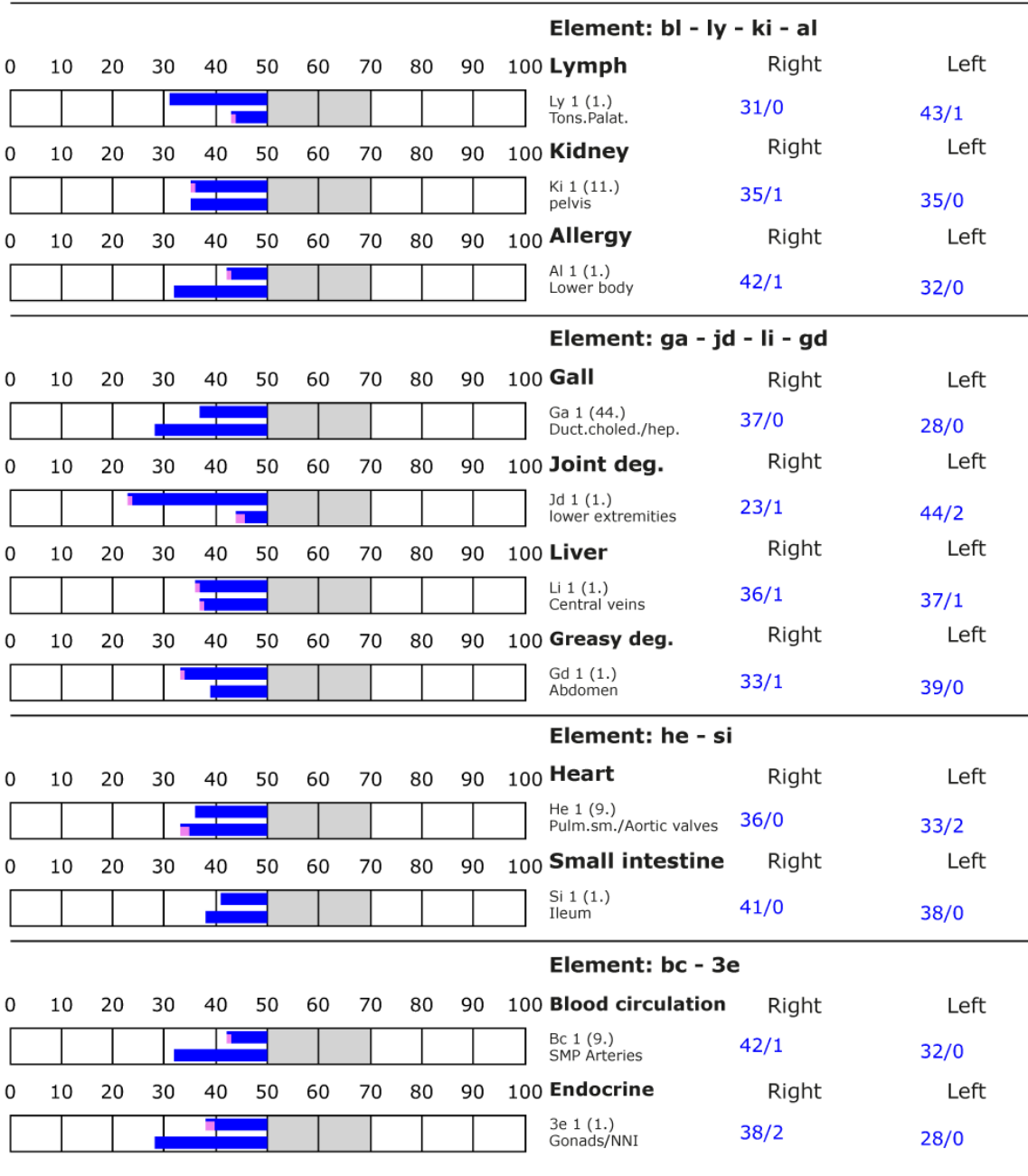
+ : Indicator decline 3-5 Skt.

T: Total inflammation (>89 Skt.)

P: Partial inflammation (70-89 Skt.)

D: Degeneration (< 50 Skt.)

Standard values: (50-70 Skt.)





## BESA 2 Testing AFTER

### BESA 2 Testing AFTER with the „Leela Quantum Infinity Bloc“

In the further course of the BESA test, the cat Mia was associated as a photograph via quantum entanglement with the test object, the "Leela Quantum Infinity Bloc". After an effect duration of 10 minutes, Eva Krankl performed BESA testing on the test subject as a surrogate for the cat Mia. This means that the test object was activated in this way for the test person.

**Goal:** To determine the reaction of the meridian system of the test person (cat Mia) in connection with the test object. Can the "Leela Quantum Infinity Bloc" neutralize the bioenergy informative system of the test subject (cat Mia)? Determination of the differences of BESA 2 testing AFTER compared to BESA 1 testing BEFORE.

BESA-Test evaluation P75 1.0  
from **13-01-2022 at 16:55 to 16:59** (4 minutes) page 21 and 22

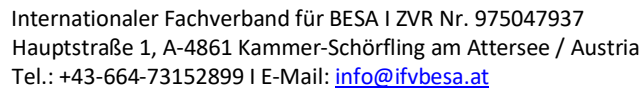
**Result:** The measurement result shows significant improvements on the meridian end points or on the energetic state of the test person - cat Mia.

**100 % in the green area**

**Conclusion:** As the graphics show, 10 minutes after confrontation of the test person - cat Mia with the "Leela Quantum Infinity Bloc" all measuring points are in the green, optimal and harmonized area (balanced energy system). The BESA test results in a significant improvement of the energy situation in the meridian system of the test person - cat Mia compared to the BESA 1 tests BEFORE. All measured values were at 50 Skt or just above. It can be seen that the "Leela Quantum Infinity Bloc" is able in a very short time to give the deregulations detected in the BESA 1 tests BEFORE the necessary impulse for harmonization (neutralization) into the life-promoting range. The comparisons of the BESA graphs confirm the change and harmonization of the stress factors on the meridian system.

These BESA 2 tests show that the test object, the "Leela Quantum Infinity Bloc" is basically able and suitable to produce a harmonization of the stressful information..





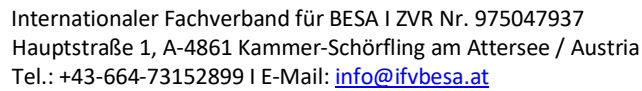
## A 3D pie chart with a green slice representing 100%. The slice is labeled '100%' in black text. The chart is shown from an isometric perspective, giving it a three-dimensional appearance.

- 0 10 20 30 40 50 60 70 80 90 100 **Bladder**

Right Left

54/1 52/0

BL 1 (67.)  
body



- +++ : Indicator decline > 15 Skt.
- ++ : Indicator decline 6-15 Skt.
- +: Indicator decline 3-5 Skt.

T: Total inflammation (>89 Skt.)  
P: Partial inflammation (70-89 Skt.)

D: Degeneration (< 50 Skt.)

Standard values: (50-70 Skt.)

	0	10	20	30	40	50	60	70	80	90	100		Right	Left	
<b>Lymph</b>															
													Ly 1 (1.) Tons.Palat.	54/0	51/0
<b>Kidney</b>															
													Ki 1 (11.) pelvis	54/0	51/1
<b>Allergy</b>															
													Al 1 (1.) Lower body	56/0	54/0

	0	10	20	30	40	50	60	70	80	90	100		Right	Left
<b>Gall</b>														
	Ga 1 (44.) Duct.choled./hep.												53/0	51/1
<b>Joint deg.</b>														
	Jd 1 (1.) lower extremities												51/1	53/0
<b>Liver</b>														
	Li 1 (1.) Central veins												52/0	51/1
<b>Greasy deg.</b>														
	Gd 1 (1.) Abdomen												52/0	51/0

**Heart** Right Left

He 1 (9.) Pulm.sm./Aortic valves 53/0 57/0

**Small intestine** Right Left

Si 1 (1.) Ileum 51/0 53/0

											Blood circulation	Right	Left
0	10	20	30	40	50	60	70	80	90	100	Bc 1 (9.) SMP Arteries	50/0	52/0
											Endocrine	Right	Left
0	10	20	30	40	50	60	70	80	90	100	3e 1 (1.) Gonads/NNI	52/0	52/0



## Respondent 3 – Cat Kaspar

### BESA 1 Testing BASIC BEFORE

#### BESA 1 Testing BASIC BEFORE as status

Eva Krankl performed a basic BESA measurement on the test person (tomcat Kaspar), as a surrogate of the animal. All BESA tests were performed on the TING points of the surrogate (40 nail fold points on the fingers and toes).



**Goal:** To establish a basic test (status) to show the initial energetic situation for all further BESA tests.

BESA-Test evaluation P75 1.0

from **26-11-2021 at 21:05 to 21:09** (4 minutes) page 24 and 25

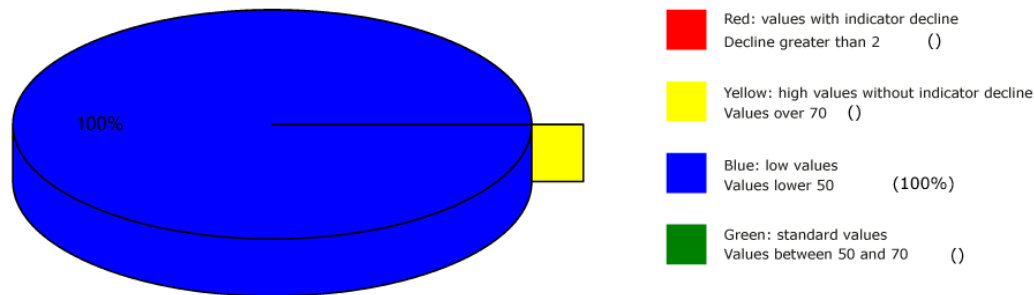
**Result:** The measurement result indicated energetic stresses at the meridian end points and subsequently on the subordinate metabolic situation of the test person.

**100 % in the blue area**

**Conclusion:** As the graphs show, all measurement points are in the degenerative blue range (energy deficiency). These readings interpret a moderate lack of energy at each of the acupuncture points tested. The comparisons of the BESA graphs confirm the stressful influences on the energy-informative events in the meridian system of the test person.



## Overview of BESA measuring



## BESA basic test

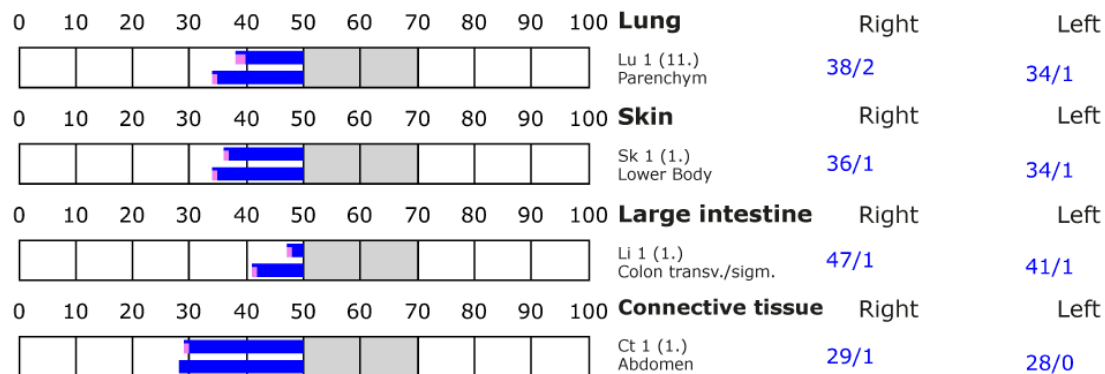
+++ : Indicator decline > 15 Skt.  
++ : Indicator decline 6-15 Skt.  
+ : Indicator decline 3-5 Skt.

T: Total inflammation (>89 Skt.)  
P: Partial inflammation (70-89 Skt.)

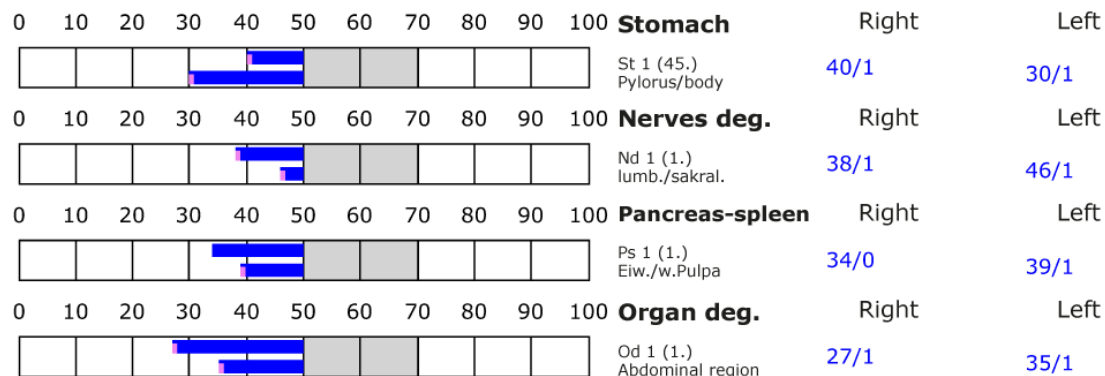
D: Degeneration (< 50 Skt.)

Standard values: (50-70 Skt.)

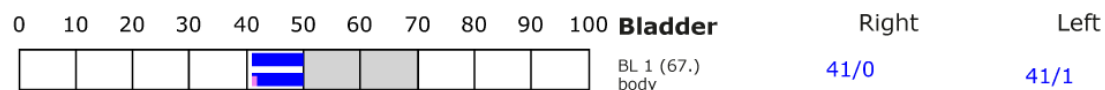
### Element: lu - sk - li - ct



### Element: st - nd - ps - od



### Element: bl - ly - ki - al





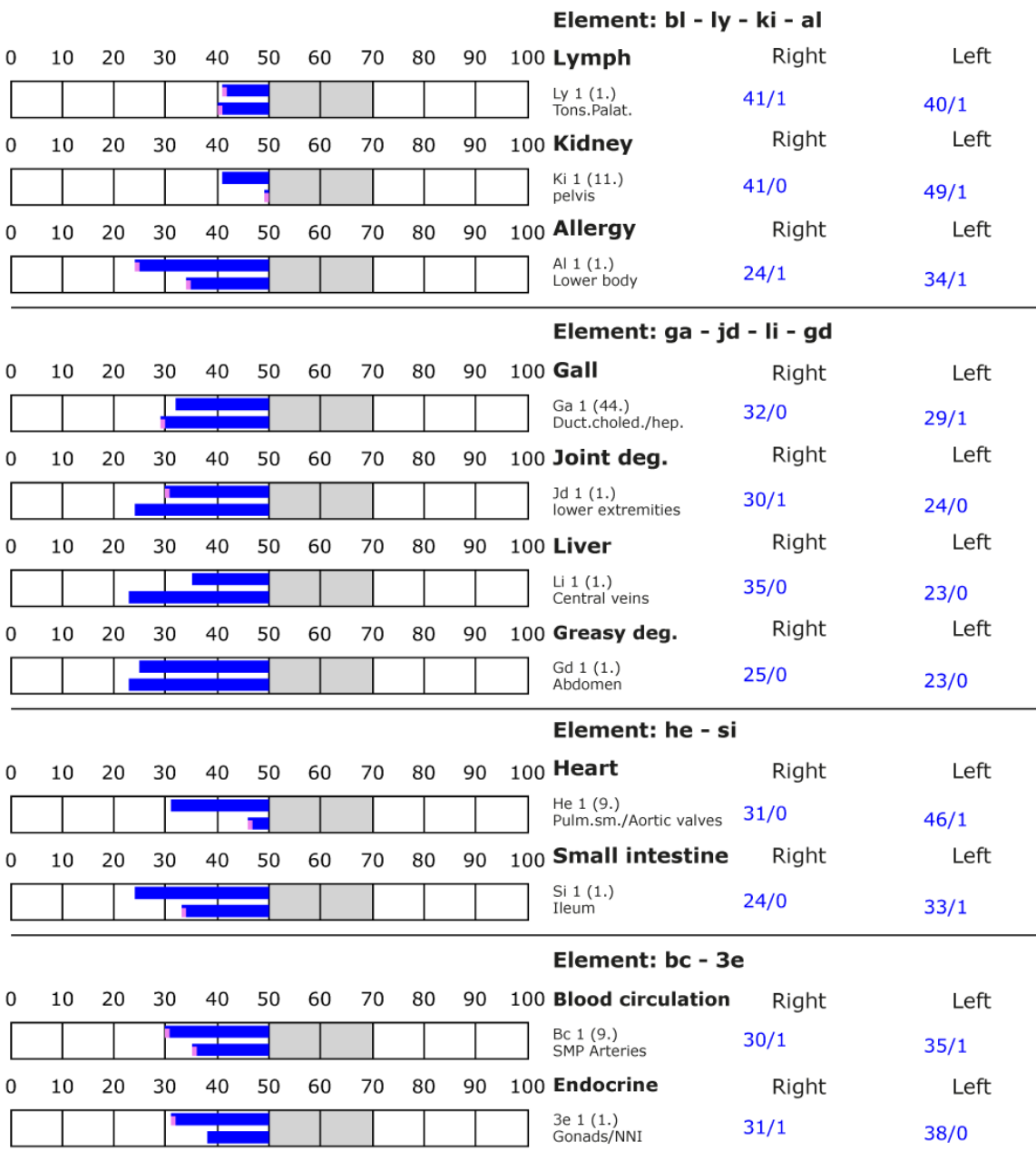
## BESA basic test

+++ : Indicator decline > 15 Skt.  
++ : Indicator decline 6-15 Skt.  
+ : Indicator decline 3-5 Skt.

T: Total inflammation (>89 Skt.)  
P: Partial inflammation (70-89 Skt.)

D: Degeneration (< 50 Skt.)

Standard values: (50-70 Skt.)





## BESA 2 Testing AFTER

### BESA 2 Testing AFTER with the „Leela Quantum Infinity Bloc“

In the further course of the BESA test, Kaspar the cat was associated with the test object, the "Leela Quantum Infinity Bloc", as a photograph via quantum entanglement. After an effect duration of 10 minutes, Eva Krankl performed BESA testing on the test subject as a surrogate for Kaspar the cat. This means that the test object was activated in this way for the test person.

**Goal:** To determine the reaction of the meridian system of the test person (Kaspar the cat) in connection with the test object. Can the "Leela Quantum Infinity Bloc" neutralize the bioenergy informative system of the test person (tomcat Kaspar)? Determination of the differences of BESA 2 testing AFTER compared to BESA 1 testing BEFORE.

BESA-Test evaluation P75 1.0  
from **13-01-2022 at 16:55 to 16:59** (4 minutes) page 21 and 22

**Result:** The measurement result shows significant improvements on the meridian end points or on the energetic state of the test person - Kater Kaspar.

**100 % in the green area**

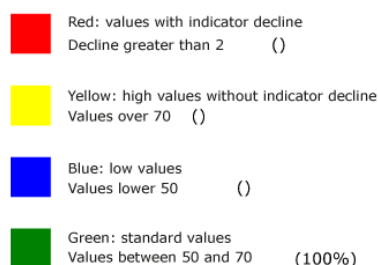
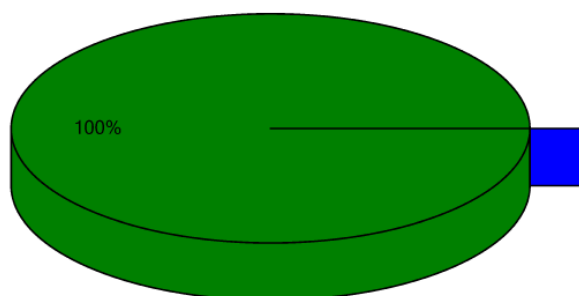
**Conclusion:** As the graphics show, 10 minutes after confrontation of the test person - tomcat Kaspar with the "Leela Quantum Infinity Bloc" all measuring points are in the green, optimal and harmonized area (balanced energy system). The BESA test results in a significant improvement of the energy situation in the meridian system of the test person - tomcat Kaspar compared to the BESA 1 tests BEFORE. All measured values were at 50 Skt or just above. It shows that the "Leela Quantum Infinity Bloc" is able in a very short time to give the deregulations detected in the BESA 1 tests BEFORE the necessary impulse for a harmonization (neutralization) into the life-promoting range. The comparisons of the BESA graphs confirm the change and harmonization of the stress factors on the meridian system.

These BESA 2 tests show that the test object, the "Leela Quantum Infinity Bloc" is basically able and suitable to produce a harmonization of the stressful information.





## Overview of BESA measuring



## BESA basic test

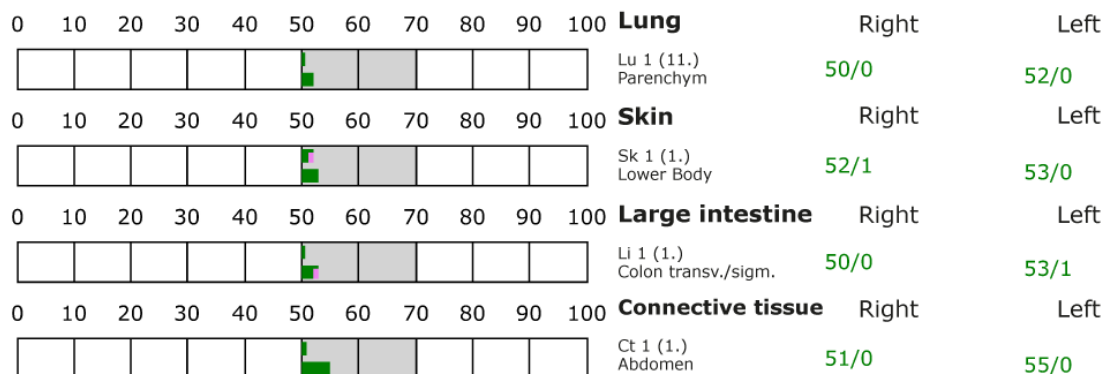
+++ : Indicator decline > 15 Skt.  
++ : Indicator decline 6-15 Skt.  
+ : Indicator decline 3-5 Skt.

T: Total inflammation (>89 Skt.)  
P: Partial inflammation (70-89 Skt.)

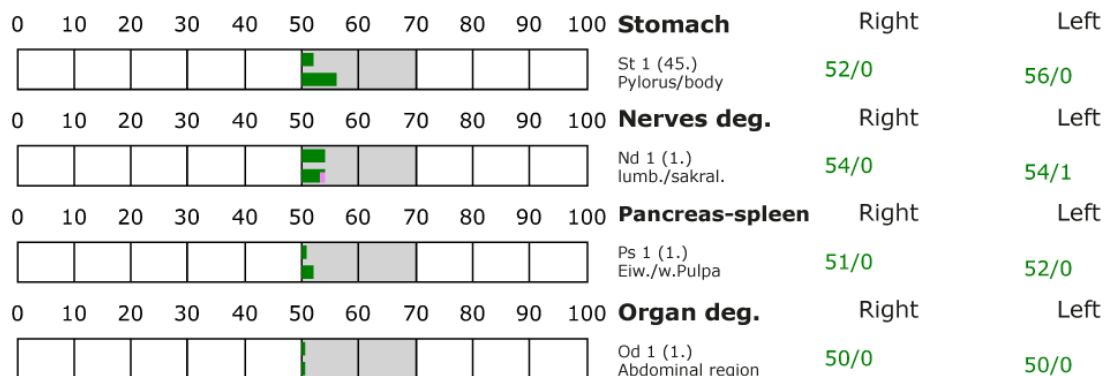
D: Degeneration (< 50 Skt.)

Standard values: (50-70 Skt.)

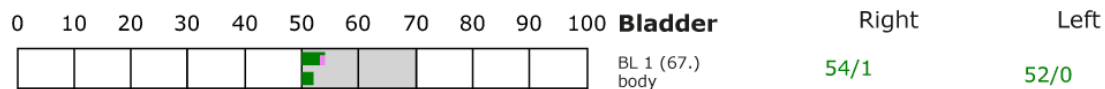
### Element: lu - sk - li - ct



### Element: st - nd - ps - od



### Element: bl - ly - ki - al





## BESA basic test

+++ : Indicator decline > 15 Skt.

++ : Indicator decline 6-15 Skt.

± : Indicator decline 3-5 Skt.

T: Total inflammation (>89 Skt.)

P: Partial inflammation (70-89 Skt.)

D: Degeneration (< 50 Skt.)

Standard values: (50-70 Skt.)

Element: bl - ly - ki - al										
0	10	20	30	40	50	60	70	80	90	100
<div><div></div><div></div><div></div><div></div><div></div><div></div><div></div><div></div><div></div><div></div></div>										
<div><div></div><div></div><div></div><div></div><div></div><div></div><div></div><div></div><div></div><div></div></div>										
<div><div></div><div></div><div></div><div></div><div></div><div></div><div></div><div></div><div></div><div></div></div>										
<div><div></div><div></div><div></div><div></div><div></div><div></div><div></div><div></div><div></div><div></div></div>										
<div><div></div><div></div><div></div><div></div><div></div><div></div><div></div><div></div><div></div><div></div></div>										
<div><div></div><div></div><div></div><div></div><div></div><div></div><div></div><div></div><div></div><div></div></div>										
<div><div></div><div></div><div></div><div></div><div></div><div></div><div></div><div></div><div></div><div></div></div>										
<div><div></div><div></div><div></div><div></div><div></div><div></div><div></div><div></div><div></div><div></div></div>										
<div><div></div><div></div><div></div><div></div><div></div><div></div><div></div><div></div><div></div><div></div></div>										
<div><div></div><div></div><div></div><div></div><div></div><div></div><div></div><div></div><div></div><div></div></div>										
<div><div></div><div></div><div></div><div></div><div></div><div></div><div></div><div></div><div></div><div></div></div>										
<div><div></div><div></div><div></div><div></div><div></div><div></div><div></div><div></div><div></div><div></div></div>										
<div><div></div><div></div><div></div><div></div><div></div><div></div><div></div><div></div><div></div><div></div></div>										
<div><div></div><div></div><div></div><div></div><div></div><div></div><div></div><div></div><div></div><div></div></div>										
<div><div></div><div></div><div></div><div></div><div></div><div></div><div></div><div></div><div></div><div></div></div>										
<div><div></div><div></div><div></div><div></div><div></div><div></div><div></div><div></div><div></div><div></div></div>										
<div><div></div><div></div><div></div><div></div><div></div><div></div><div></div><div></div><div></div><div></div></div>										
<div><div></div><div></div><div></div><div></div><div></div><div></div><div></div><div></div><div></div><div></div></div>										
<div><div></div><div></div><div></div><div></div><div></div><div></div><div></div><div></div><div></div><div></div></div>										
<div><div></div><div></div><div></div><div></div><div></div><div></div><div></div><div></div><div></div><div></div></div>										
<div><div></div><div></div><div></div><div></div><div></div><div></div><div></div><div></div><div></div><div></div></div>										
<div><div></div><div></div><div></div><div></div><div></div><div></div><div></div><div></div><div></div><div></div></div>										
<div><div></div><div></div><div></div><div></div><div></div><div></div><div></div><div></div><div></div><div></div></div>										
<div><div></div><div></div><div></div><div></div><div></div><div></div><div></div><div></div><div></div><div></div></div>										
<div><div></div><div></div><div></div><div></div><div></div><div></div><div></div><div></div><div></div><div></div></div>										
<div><div></div><div></div><div></div><div></div><div></div><div></div><div></div><div></div><div></div><div></div></div>										
<div><div></div><div></div><div></div><div></div><div></div><div></div><div></div><div></div><div></div><div></div></div>										
<div><div></div><div></div><div></div><div></div><div></div><div></div><div></div><div></div><div></div><div></div></div>										
<div><div></div><div></div><div></div><div></div><div></div><div></div><div></div><div></div><div></div><div></div></div>										
<div><div></div><div></div><div></div><div></div><div></div><div></div><div></div><div></div><div></div><div></div></div>										
<div><div></div><div></div><div></div><div></div><div></div><div></div><div></div><div></div><div></div><div></div></div>										
<div><div></div><div></div><div></div><div></div><div></div><div></div><div></div><div></div><div></div><div></div></div>										
<div><div></div><div></div><div></div><div></div><div></div><div></div><div></div><div></div><div></div><div></div></div>										
<div><div></div><div></div><div></div><div></div><div></div><div></div><div></div><div></div><div></div><div></div></div>										
<div><div></div><div></div><div></div><div></div><div></div><div></div><div></div><div></div><div></div><div></div></div>										
<div><div></div><div></div><div></div><div></div><div></div><div></div><div></div><div></div><div></div><div></div></div>										
<div><div></div><div></div><div></div><div></div><div></div><div></div><div></div><div></div><div></div><div></div></div>										
<div><div></div><div></div><div></div><div></div><div></div><div></div><div></div><div></div><div></div><div></div></div>										
<div><div></div><div></div><div></div><div></div><div></div><div></div><div></div><div></div><div></div><div></div></div>										
<div><div></div><div></div><div></div><div></div><div></div><div></div><div></div><div></div><div></div><div></div></div>										
<div><div></div><div></div><div></div><div></div><div></div><div></div><div></div><div></div><div></div><div></div></div>										
<div><div></div><div></div><div></div><div></div><div></div><div></div><div></div><div></div><div></div><div></div></div>										
<div><div></div><div></div><div></div><div></div><div></div><div></div><div></div><div></div><div></div><div></div></div>										
<div><div></div><div></div><div></div><div></div><div></div><div></div><div></div><div></div><div></div><div></div></div>										
<div><div></div><div></div><div></div><div></div><div></div><div></div><div></div><div></div><div></div><div></div></div>										
<div><div></div><div></div><div></div><div></div><div></div><div></div><div></div><div></div><div></div><div></div></div>										
<div><div></div><div></div><div></div><div></div><div></div><div></div><div></div><div></div><div></div><div></div></div>										
<div><div></div><div></div><div></div><div></div><div></div><div></div><div></div><div></div><div></div><div></div></div>										
<div><div></div><div></div><div></div><div></div><div></div><div></div><div></div><div></div><div></div><div></div></div>										
<div><div></div><div></div><div></div><div></div><div></div><div></div><div></div><div></div><div></div><div></div></div>										
<div><div></div><div></div><div></div><div></div><div></div><div></div><div></div><div></div><div></div><div></div></div>										
<div><div></div><div></div><div></div><div></div><div></div><div></div><div></div><div></div><div></div><div></div></div>										
<div><div></div><div></div><div></div><div></div><div></div><div></div><div></div><div></div><div></div><div></div></div>										
<div><div></div><div></div><div></div><div></div><div></div><div></div><div></div><div></div><div></div><div></div></div>										
<div><div></div><div></div><div></div><div></div><div></div><div></div><div></div><div></div><div></div><div></div></div>										
<div><div></div><div></div><div></div><div></div><div></div><div></div><div></div><div></div><div></div><div></div></div>										
<div><div></div><div></div><div></div><div></div><div></div><div></div><div></div><div></div><div></div><div></div></div>										
<div><div></div><div></div><div></div><div></div><div></div><div></div><div></div><div></div><div></div><div></div></div>										
<div><div></div><div></div><div></div><div></div><div></div><div></div><div></div><div></div><div></div><div></div></div>										
<div><div></div><div></div><div></div><div></div><div></div><div></div><div></div><div></div><div></div><div></div></div>										
<div><div></div><div></div><div></div><div></div><div></div><div></div><div></div><div></div><div></div><div></div></div>										
<div><div></div><div></div><div></div><div></div><div></div><div></div><div></div><div></div><div></div><div></div></div>										
<div><div></div><div></div><div></div><div></div><div></div><div></div><div></div><div></div><div></div><div></div></div>										
<div><div></div><div></div><div></div><div></div><div></div><div></div><div></div><div></div><div></div><div></div></div>										
<div><div></div><div></div><div></div><div></div><div></div><div></div><div></div><div></div><div></div><div></div></div>										
<div><div></div><div></div><div></div><div></div><div></div><div></div><div></div><div></div><div></div><div></div></div>										
<div><div></div><div></div><div></div><div></div><div></div><div></div><div></div><div></div><div></div><div></div></div>										
<div><div></div><div></div><div></div><div></div><div></div><div></div><div></div><div></div><div></div><div></div></div>										
<div><div></div><div></div><div></div><div></div><div></div><div></div><div></div><div></div><div></div><div></div></div>										
<div><div></div><div></div><div></div><div></div><div></div><div></div><div></div><div></div><div></div><div></div></div>										
<div><div></div><div></div><div></div><div></div><div></div><div></div><div></div><div></div><div></div><div></div></div>										
<div><div></div><div></div><div></div><div></div><div></div><div></div><div></div><div></div><div></div><div></div></div>										
<div><div></div><div></div><div></div><div></div><div></div><div></div><div></div><div></div><div></div><div></div></div>										
<div><div></div><div></div><div></div><div></div><div></div><div></div><div></div><div></div><div></div><div></div></div>										
<div><div></div><div></div><div></div><div></div><div></div><div></div><div></div><div></div><div></div><div></div></div>										
<div><div></div><div></div><div></div><div></div><div></div><div></div><div></div><div></div><div></div><div></div></div>										
<div><div></div><div></div><div></div><div></div><div></div><div></div><div></div><div></div><div></div><div></div></div>										
<div><div></div><div></div><div></div><div></div><div></div><div></div><div></div><div></div><div></div><div></div></div>										
<div><div></div><div></div><div></div><div></div><div></div><div></div><div></div><div></div><div></div><div></div></div>										
<div><div></div><div></div><div></div><div></div><div></div><div></div>&lt;</div>										



## Respondent 4 – Dog male Sammy

### BESA 1 Testing BASIC BEFORE

#### BESA 1 Testing BASIC BEFORE as a status

Eva Krankl performed a basic BESA measurement on the test person (dog Sammy), as a surrogate of the animal. All BESA tests were performed on the TING points of the surrogate (40 nail fold points on the fingers and toes).



**Goal:** To establish a basic test (status) to show the initial energetic situation for all further BESA tests.

BESA-Test evaluation P75 1.0

from **29-11-2021 at 14:29 to 14:35** (6 minutes) page 30 and 31

**Result:** The measurement result indicated energetic stresses at the meridian end points and subsequently on the subordinate metabolic situation of the test person.

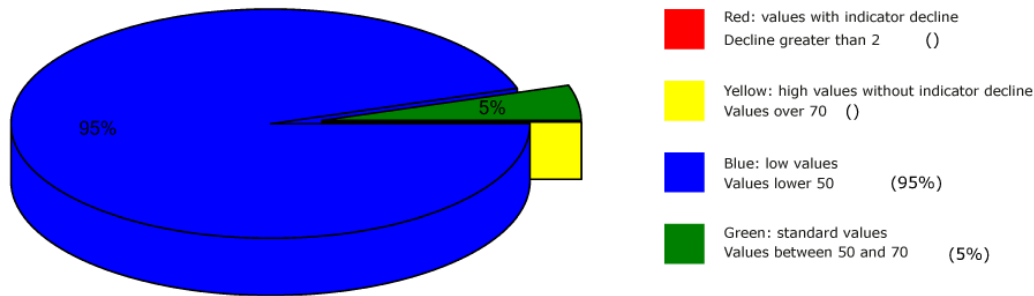
**95 % in the blue area**

**5 % in the green area**

**Conclusion:** As the graphs show, all measurement points are in the degenerative blue range (energy deficiency). These readings interpret a moderate lack of energy at each of the acupuncture points tested. The comparisons of the BESA graphs confirm the stressful influences on the energy-informative events in the meridian system of the test person.



## Overview of BESA measuring



## BESA basic test

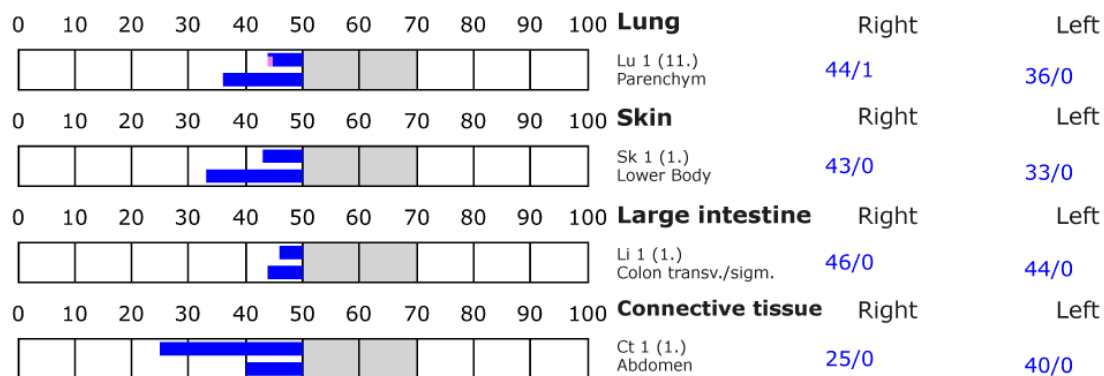
+++ : Indicator decline > 15 Skt.  
++ : Indicator decline 6-15 Skt.  
+ : Indicator decline 3-5 Skt.

T: Total inflammation (>89 Skt.)  
P: Partial inflammation (70-89 Skt.)

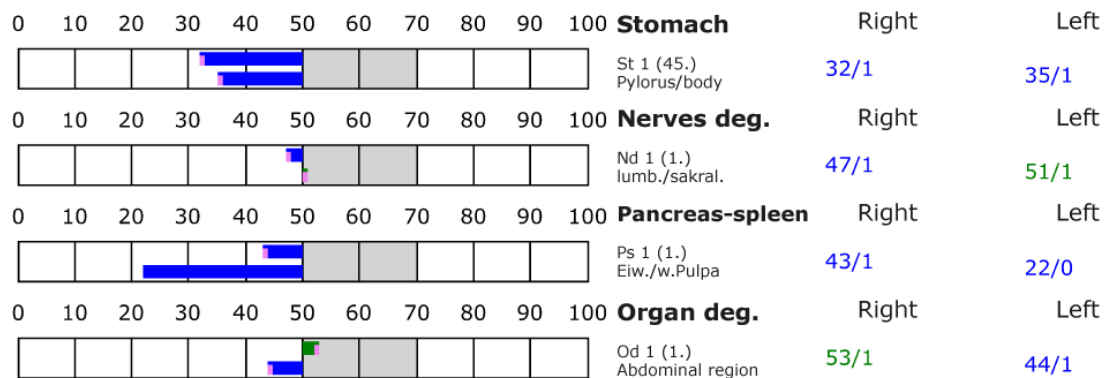
D: Degeneration (< 50 Skt.)

Standard values: (50-70 Skt.)

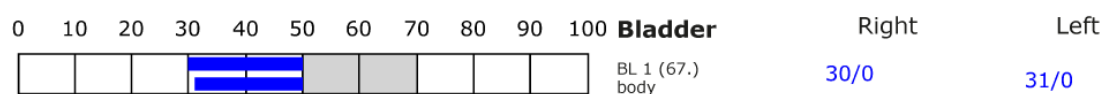
### Element: lu - sk - li - ct



### Element: st - nd - ps - od



### Element: bl - ly - ki - al





## BESA basic test

+++ : Indicator decline > 15 Skt.

++ : Indicator decline 6-15 Skt.

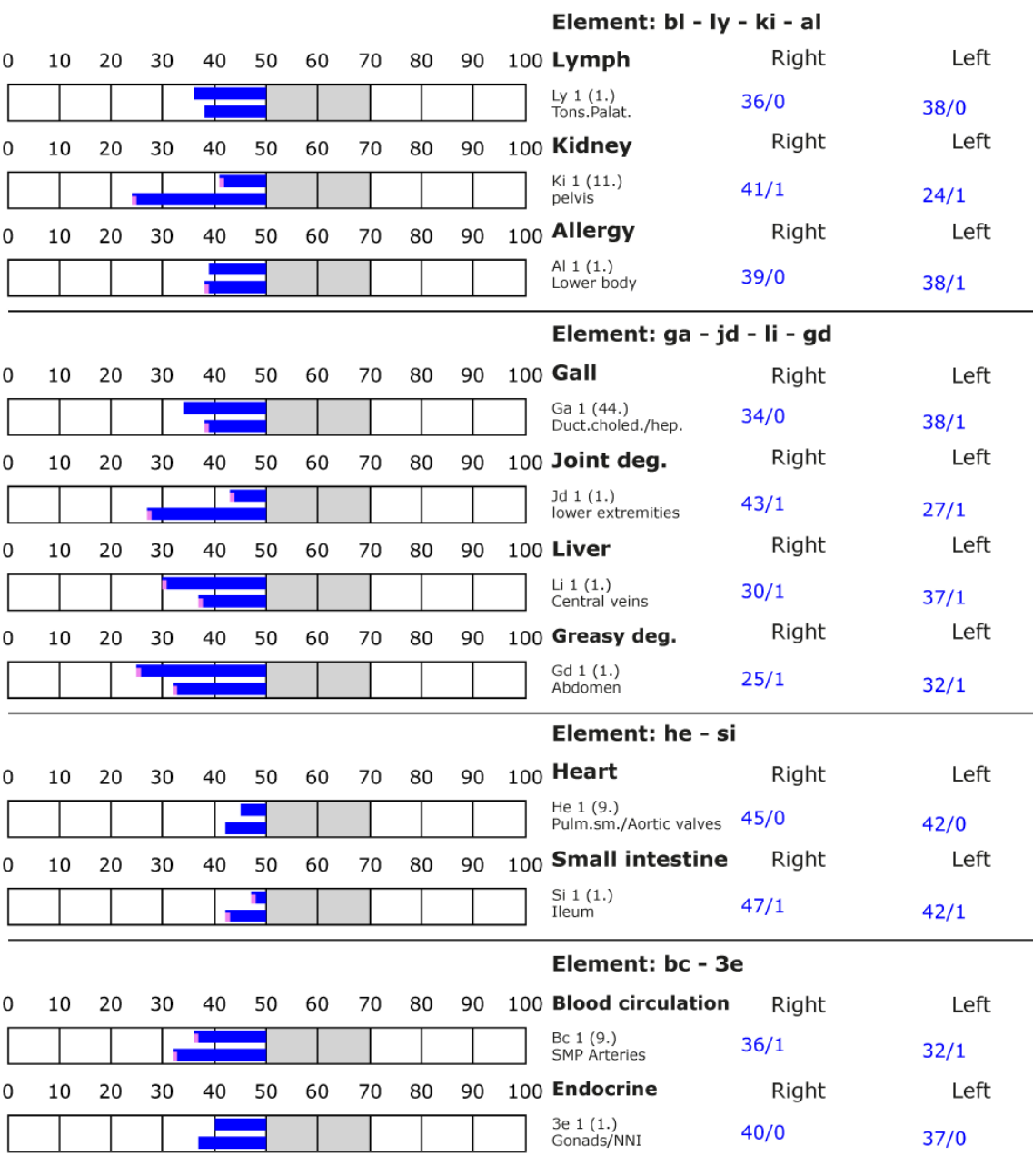
+ : Indicator decline 3-5 Skt.

T: Total inflammation (>89 Skt.)

P: Partial inflammation (70-89 Skt.)

D: Degeneration (< 50 Skt.)

Standard values: (50-70 Skt.)





## BESA 2 Testing AFTER

### BESA 2 Testing AFTER with the „Leela Quantum Infinity Bloc“

In the further course of the BESA test, the dog Sammy was associated as a photograph via quantum entanglement with the test object, the "Leela Quantum Infinity Bloc". After an effect duration of 10 minutes, Eva Krankl performed BESA testing on the test subject as a surrogate for the dog. This means that the test object was activated in this way for the test person.

**Goal:** To determine the reaction of the meridian system of the test person (dog Sammy) in connection with the test object. Can the "Leela Quantum Infinity Bloc" neutralize the bioenergy informative system of the test subject (Sammy the dog)? Determination of the differences of BESA 2 testing AFTER compared to BESA 1 testing BEFORE.

BESA-Test evaluation P75 1.0  
from **13-01-2022 at 19:09 to 19:14** (5 minutes) page 33 and 34

**Result:** The measurement result shows significant improvements on the meridian end points or on the energetic state of the test person - dog Sammy.

**100 % in the green area**

**Conclusion:** As the graphics show, 10 minutes after confrontation of the test person - dog Sammy with the "Leela Quantum Infinity Bloc" all measuring points are in the green, optimal and harmonized area (balanced energy system). The BESA test results in a significant improvement of the energy situation in the meridian system of the test person - dog Sammy compared to the BESA 1 tests BEFORE. All measured values were at 50 Skt or just above. It shows that the "Leela Quantum Infinity Bloc" is able in a very short time to give the deregulations detected in

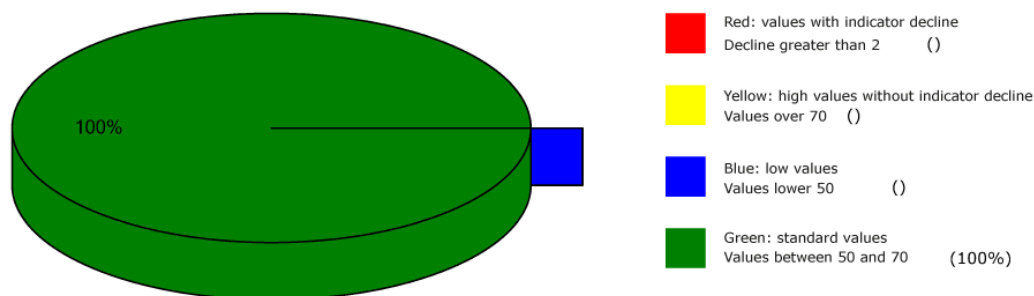
the BESA 1 tests BEFORE the necessary impulse for harmonization (neutralization) into the life-supporting range. The comparisons of the BESA graphs confirm the change and harmonization of the stress factors on the meridian system.

These BESA 2 tests show that the test object, the "Leela Quantum Infinity Bloc" is basically able and suitable to produce a harmonization of the stressful information.





## Overview of BESA measuring



## BESA basic test

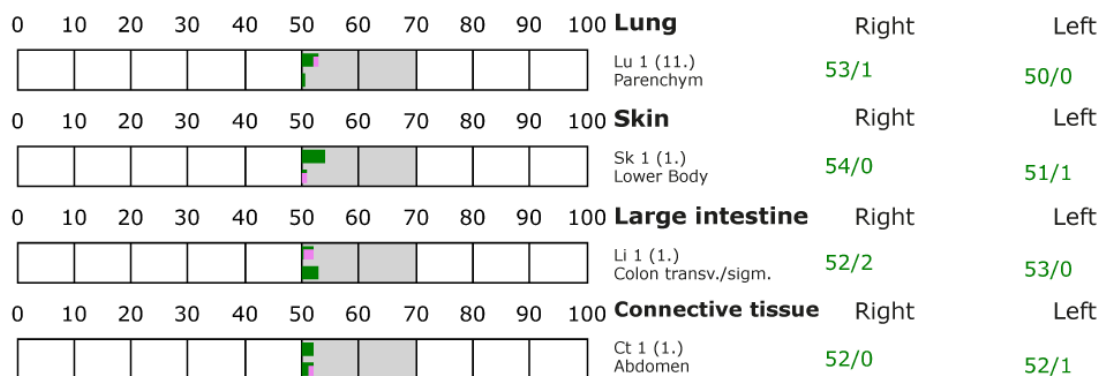
+++ : Indicator decline > 15 Skt.  
++ : Indicator decline 6-15 Skt.  
+ : Indicator decline 3-5 Skt.

T: Total inflammation (>89 Skt.)  
P: Partial inflammation (70-89 Skt.)

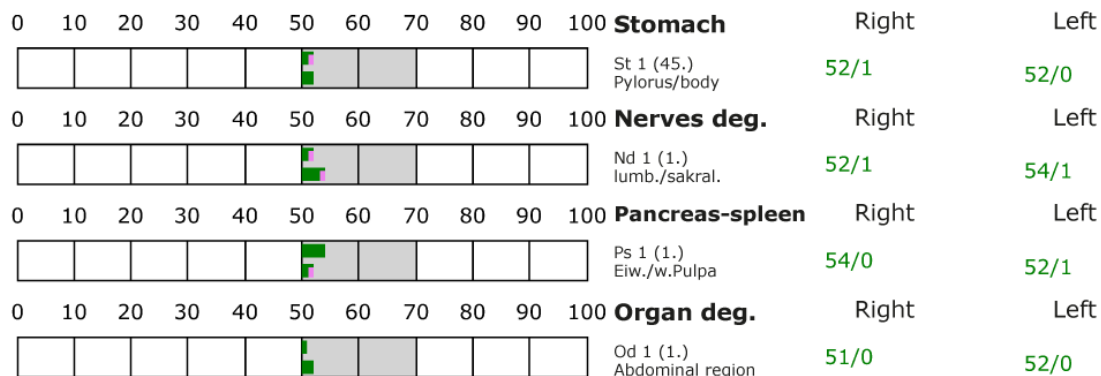
D: Degeneration (< 50 Skt.)

Standard values: (50-70 Skt.)

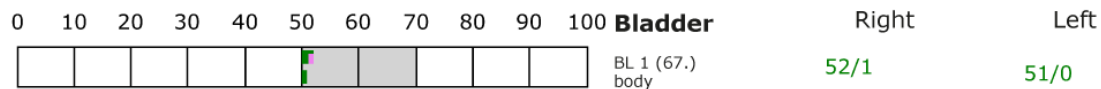
### Element: lu - sk - li - ct

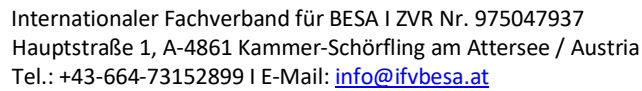


### Element: st - nd - ps - od



### Element: bl - ly - ki - al





- +++ : Indicator decline > 15 Skt.
- ++ : Indicator decline 6-15 Skt.
- +: Indicator decline 3-5 Skt.

T: Total inflammation (>89 Skt.)  
P: Partial inflammation (70-89 Skt.)

Standard values: (50-70 Skt.)

Fa. Leela Quantum Tech, LLC



## Respondent 5 – Bitch Felicita

### BESA 1 Testing BASIC BEFORE

#### BESA 1 Testing BASIC BEFORE as status

Eva Eva Krankl performed a basic BESA test on the test person (bitch Felicita), as a surrogate of the animal. All BESA tests were performed on the TING points of the surrogate (40 nail fold points on the fingers and toes).



**Goal:** To establish a basic test (status) to represent the initial energetic situation for all further BESA tests.

BESA-Test evaluation P75 1.0

from **13-01-2022 at 16:05 to 16:27** (22 minutes) page 36 and 37

**Result:** The measurement result indicated energetic stresses at the meridian end points and subsequently on the subordinate metabolic situation of the test person.

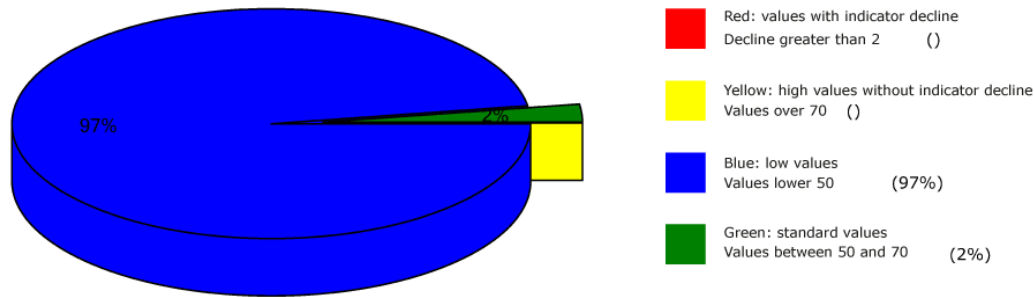
**95 % in the blue area**

**5 % in the green area**

**Conclusion:** As the graphs show, all measurement points are in the degenerative blue range (energy deficiency). These readings interpret a moderate lack of energy at each of the acupuncture points tested. The comparisons of the BESA graphs confirm the stressful influences on the energy-informative events in the meridian system of the test person.



## Overview of BESA measuring



## BESA basic test

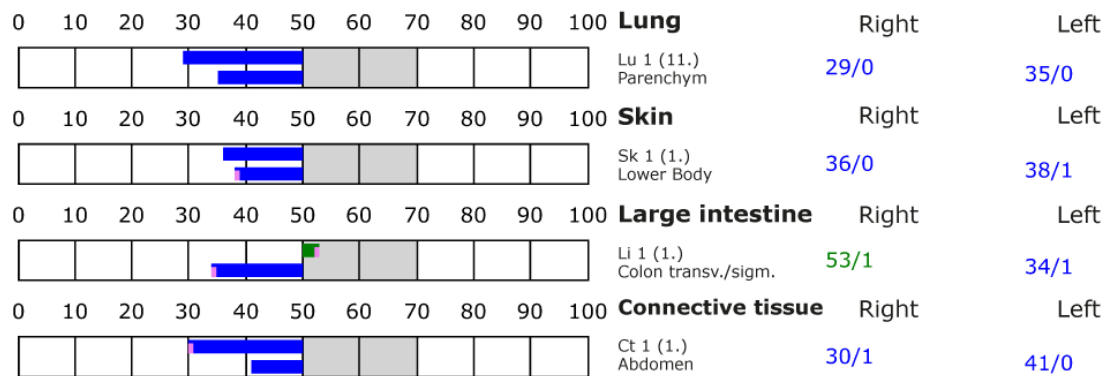
+++ : Indicator decline > 15 Skt.  
++ : Indicator decline 6-15 Skt.  
+ : Indicator decline 3-5 Skt.

T: Total inflammation (>89 Skt.)  
P: Partial inflammation (70-89 Skt.)

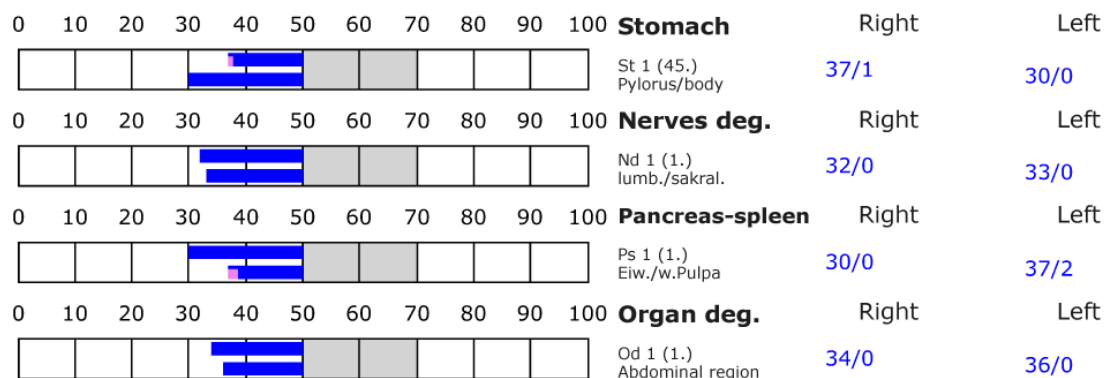
D: Degeneration (< 50 Skt.)

Standard values: (50-70 Skt.)

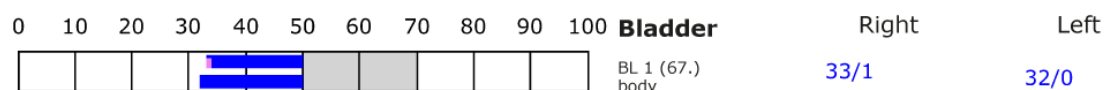
### Element: lu - sk - li - ct



### Element: st - nd - ps - od



### Element: bl - ly - ki - al





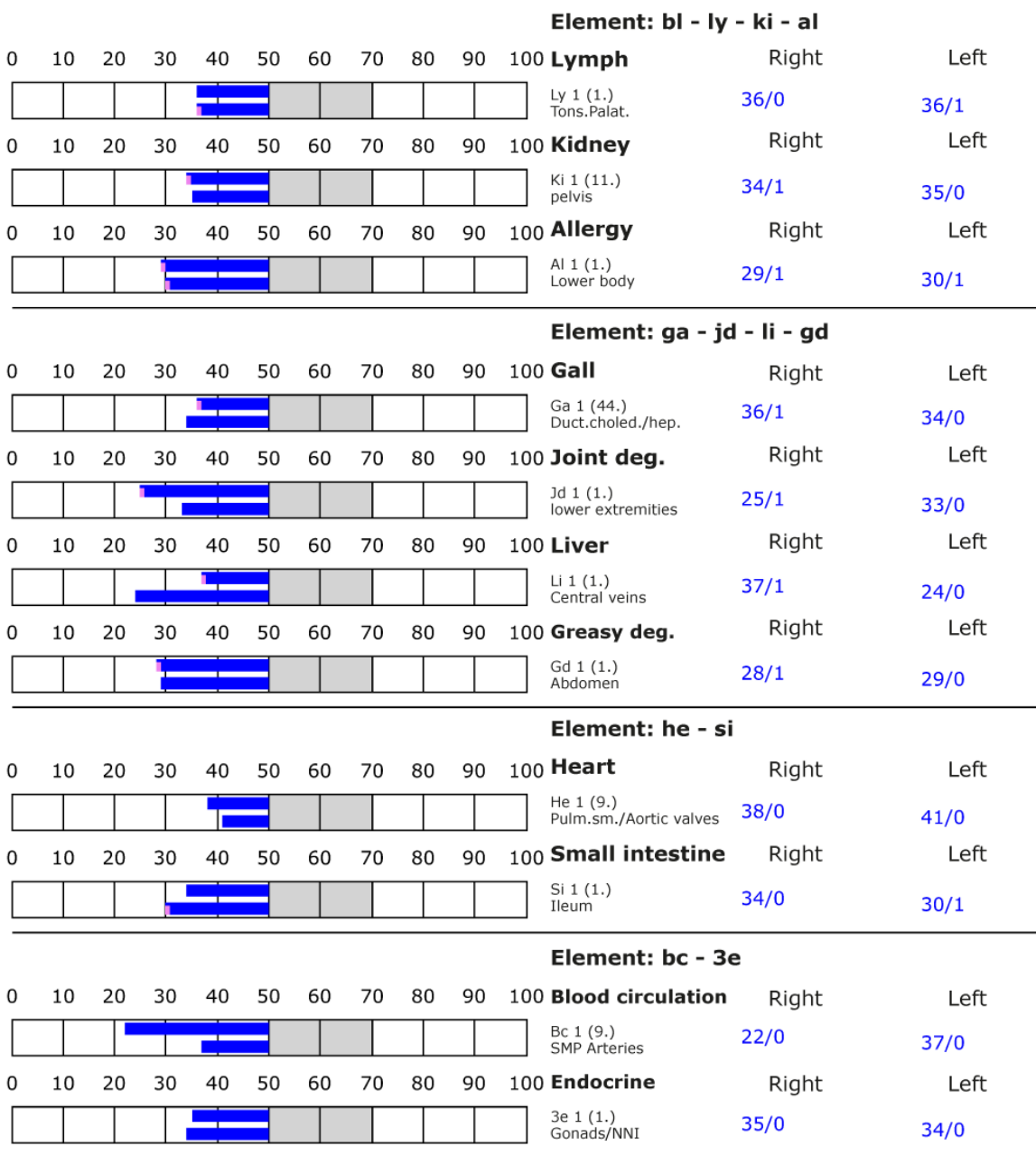
## BESA basic test

+++ : Indicator decline > 15 Skt.  
++ : Indicator decline 6-15 Skt.  
+ : Indicator decline 3-5 Skt.

T: Total inflammation (>89 Skt.)  
P: Partial inflammation (70-89 Skt.)

D: Degeneration (< 50 Skt.)

Standard values: (50-70 Skt.)





## BESA 2 Testing AFTER

### BESA 2 Testing AFTER with the „Leela Quantum Infinity Bloc“

In the further course of the BESA test, the bitch Felicitas was associated as a photograph via quantum entanglement with the test object, the "Leela Quantum Infinity Bloc". After an effect duration of 10 minutes, Eva Krankl performed BESA testing on the test subject as a surrogate for the bitch Felicitas. This means that the test object was activated in this way for the test person.

**Goal:** Determination of the reaction of the meridian system of the test person (bitch Felicitas) in connection with the test object. Can the "Leela Quantum Infinity Bloc" neutralize the bioenergy informative system of the test subject (dog Felicitas)? Determination of the differences of BESA 2 testing AFTER compared to BESA 1 testing BEFORE.

BESA-Test evaluation P75 1.0  
from **13-01-2022 at 18:56 to 19:01** (5 minutes) page 39 and 40

**Result:** The measurement result shows significant improvements in the meridian end points or in the energetic state of the test person - dog Felicitas.

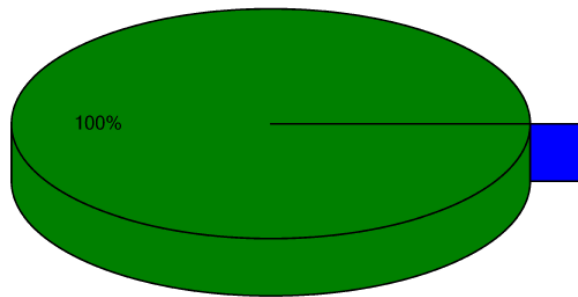
**100 % in the green area**

**Conclusion:** As the graphs show, 10 minutes after confrontation of the test person - bitch Felicitas with the "Leela Quantum Infinity Bloc" all measuring points are in the green, optimal and harmonized area (balanced energy system). The BESA test results in a significant improvement of the energy situation in the meridian system of the test person - bitch Felicitas compared to the BESA 1 tests BEFORE. All measured values were at 50 sct or just above. It can be seen that the "Leela Quantum Infinity Bloc" is able in a very short time to give the deregulations detected in the BESA 1 tests BEFORE the necessary impulse for harmonization (neutralization) into the life-promoting range. The comparisons of the BESA graphs confirm the change and harmonization of the stress factors on the meridian system.

These BESA 2 tests show that the test object, the "Leela Quantum Infinity Bloc" is basically able and suitable to produce a harmonization of the stressful information.



## Overview of BESA measuring



- Red: values with indicator decline  
Decline greater than 2 ( )
- Yellow: high values without indicator decline  
Values over 70 ( )
- Blue: low values  
Values lower 50 ( )
- Green: standard values  
Values between 50 and 70 (100%)

## BESA basic test

+++ : Indicator decline > 15 Skt.  
++ : Indicator decline 6-15 Skt.  
+ : Indicator decline 3-5 Skt.

T: Total inflammation (>89 Skt.)  
P: Partial inflammation (70-89 Skt.)

D: Degeneration (< 50 Skt.)

Standard values: (50-70 Skt.)

### Element: lu - sk - li - ct

0	10	20	30	40	50	60	70	80	90	100			
<div><div></div></div>													
											<b>Lung</b>	Right	Left
											Lu 1 (11.) Parenchym	58/1	51/0
											<b>Skin</b>	Right	Left
											Sk 1 (1.) Lower Body	52/0	52/0
											<b>Large intestine</b>	Right	Left
											Li 1 (1.) Colon transv./sigm.	51/0	52/1
											<b>Connective tissue</b>	Right	Left
											Ct 1 (1.) Abdomen	51/1	53/1

### Element: st - nd - ps - od

0	10	20	30	40	50	60	70	80	90	100			
<div><div></div></div>													
											<b>Stomach</b>	Right	Left
											St 1 (45.) Pylorus/body	52/0	52/1
											<b>Nerves deg.</b>	Right	Left
											Nd 1 (1.) lumb./sakral.	51/0	53/0
											<b>Pancreas-spleen</b>	Right	Left
											Ps 1 (1.) Eiw./w.Pulpa	56/1	52/1
											<b>Organ deg.</b>	Right	Left
											Od 1 (1.) Abdominal region	51/1	52/0

### Element: bl - ly - ki - al

0	10	20	30	40	50	60	70	80	90	100			
<div><div></div></div>													
											<b>Bladder</b>	Right	Left
											BL 1 (67.) body	53/0	52/0





## BESA basic test

+++ : Indicator decline > 15 Skt.  
++ : Indicator decline 6-15 Skt.  
+ : Indicator decline 3-5 Skt.

T: Total inflammation (>89 Skt.)  
P: Partial inflammation (70-89 Skt.)

D: Degeneration (< 50 Skt.)

Standard values: (50-70 Skt.)

Element: bl - ly - ki - al													
0	10	20	30	40	50	60	70	80	90	100	<b>Lymph</b>	Right	Left
<div><div></div><div></div><div></div><div></div><div></div><div></div><div></div><div></div><div></div><div></div></div>											Ly 1 (1.) Tons.Palat.	50/1	53/0
0	10	20	30	40	50	60	70	80	90	100	<b>Kidney</b>	Right	Left
<div><div></div><div></div><div></div><div></div><div></div><div></div><div></div><div></div><div></div><div></div></div>											Ki 1 (11.) pelvis	52/0	52/0
0	10	20	30	40	50	60	70	80	90	100	<b>Allergy</b>	Right	Left
<div><div></div><div></div><div></div><div></div><div></div><div></div><div></div><div></div><div></div><div></div></div>											Al 1 (1.) Lower body	51/0	52/0
Element: ga - jd - li - gd													
0	10	20	30	40	50	60	70	80	90	100	<b>Gall</b>	Right	Left
<div><div></div><div></div><div></div><div></div><div></div><div></div><div></div><div></div><div></div><div></div></div>											Ga 1 (44.) Duct.choled./hep.	52/0	52/0
0	10	20	30	40	50	60	70	80	90	100	<b>Joint deg.</b>	Right	Left
<div><div></div><div></div><div></div><div></div><div></div><div></div><div></div><div></div><div></div><div></div></div>											Jd 1 (1.) lower extremities	52/2	52/1
0	10	20	30	40	50	60	70	80	90	100	<b>Liver</b>	Right	Left
<div><div></div><div></div><div></div><div></div><div></div><div></div><div></div><div></div><div></div><div></div></div>											Li 1 (1.) Central veins	51/0	51/0
0	10	20	30	40	50	60	70	80	90	100	<b>Greasy deg.</b>	Right	Left
<div><div></div><div></div><div></div><div></div><div></div><div></div><div></div><div></div><div></div><div></div></div>											Gd 1 (1.) Abdomen	51/1	52/1
Element: he - si													
0	10	20	30	40	50	60	70	80	90	100	<b>Heart</b>	Right	Left
<div><div></div><div></div><div></div><div></div><div></div><div></div><div></div><div></div><div></div><div></div></div>											He 1 (9.) Pulm.sm./Aortic valves	53/0	52/1
0	10	20	30	40	50	60	70	80	90	100	<b>Small intestine</b>	Right	Left
<div><div></div><div></div><div></div><div></div><div></div><div></div><div></div><div></div><div></div><div></div></div>											Si 1 (1.) Ileum	51/1	53/1
Element: bc - 3e													
0	10	20	30	40	50	60	70	80	90	100	<b>Blood circulation</b>	Right	Left
<div><div></div><div></div><div></div><div></div><div></div><div></div><div></div><div></div><div></div><div></div></div>											Bc 1 (9.) SMP Arteries	55/1	54/0
0	10	20	30	40	50	60	70	80	90	100	<b>Endocrine</b>	Right	Left
<div><div></div><div></div><div></div><div></div><div></div><div></div><div></div><div></div><div></div><div></div></div>											3e 1 (1.) Gonads/NNI	51/0	52/1



## Respondent 6 – Mare Ravelle

### BESA 1 Testing BASIC BEFORE

#### BESA 1 Testing BASIC BEFORE as status

Eva Krankl performed a basic BESA measurement on the test person (horse-mare Ravelle), as a surrogate of the animal. All BESA tests were performed on the TING points of the surrogate (40 nail fold points on the fingers and toes).



**Goal:** To establish a basic test (status) to show the initial energetic situation for all further BESA tests.

BESA-Test evaluation P75 1.0

from **11-01-2022 at 14:26 to 14:34** (8 minutes) page 42 and 43

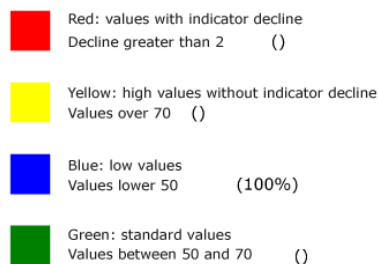
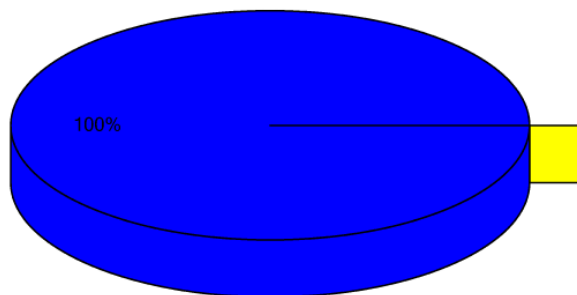
**Result:** The measurement result indicated partly deep energetic stresses at the meridian end points and subsequently on the subordinate metabolic situation of the test person.

**100 % in the blue area**

**Conclusion:** As the graphs show, all measurement points are in the degenerative blue range (energy deficiency). These readings interpret a moderate lack of energy at each of the acupuncture points tested. The comparisons of the BESA graphs confirm the stressful influences on the energy-informative events in the meridian system of the test person.



## Overview of BESA measuring



## BESA basic test

+++ : Indicator decline > 15 Skt.

++ : Indicator decline 6-15 Skt.

+ : Indicator decline 3-5 Skt.

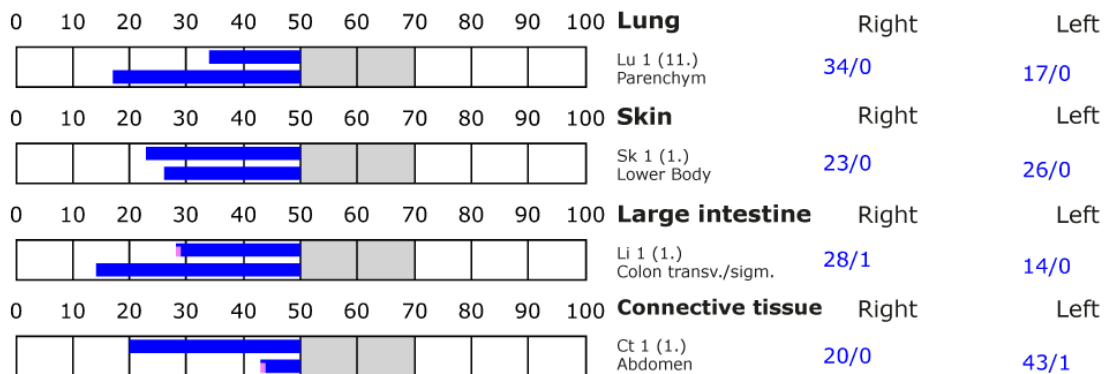
T: Total inflammation (>89 Skt.)

P: Partial inflammation (70-89 Skt.)

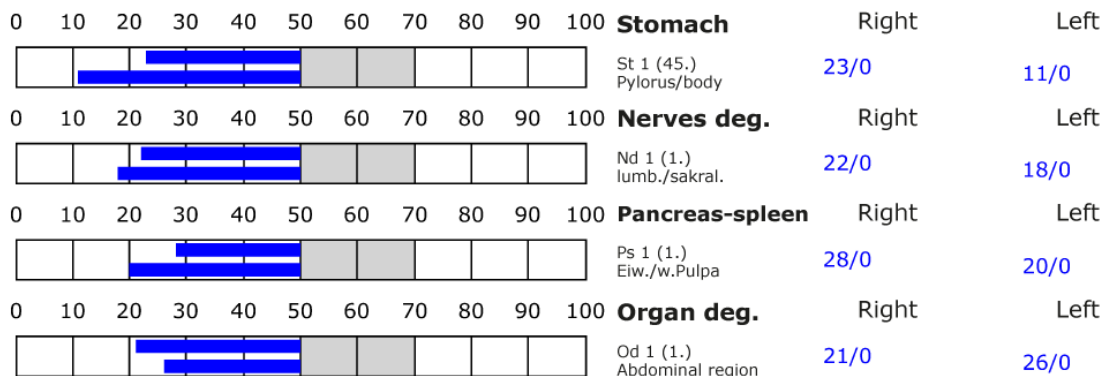
D: Degeneration (< 50 Skt.)

Standard values: (50-70 Skt.)

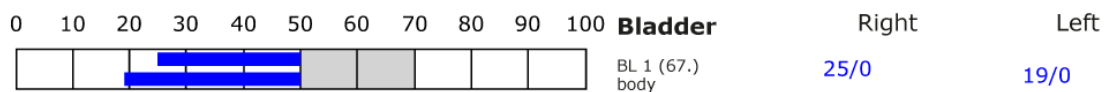
### Element: lu - sk - li - ct



### Element: st - nd - ps - od



### Element: bl - ly - ki - al





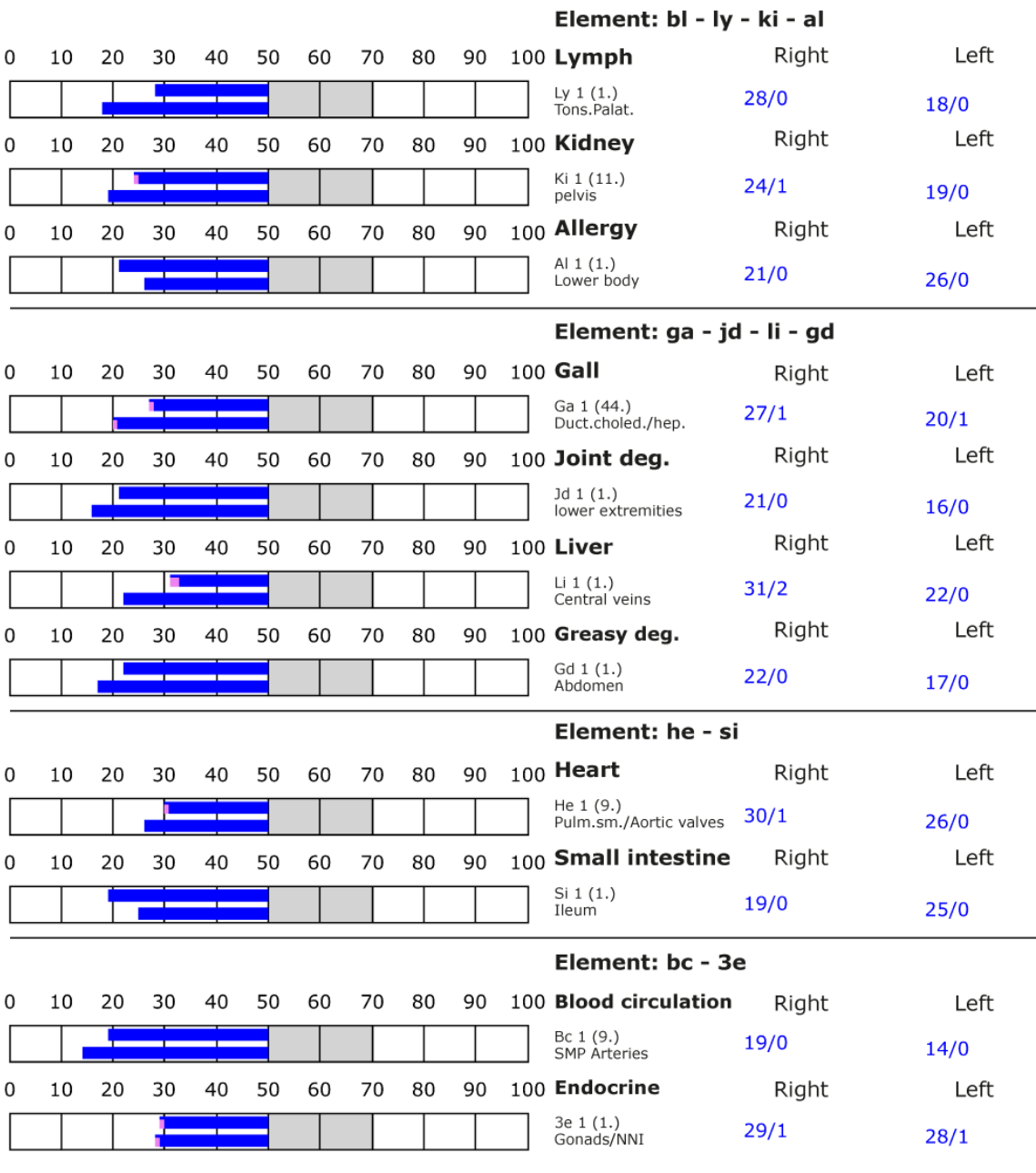
## BESA basic test

+++ : Indicator decline > 15 Skt.  
++ : Indicator decline 6-15 Skt.  
+ : Indicator decline 3-5 Skt.

T: Total inflammation (>89 Skt.)  
P: Partial inflammation (70-89 Skt.)

D: Degeneration (< 50 Skt.)

Standard values: (50-70 Skt.)





## BESA 2 Testing AFTER

### BESA 2 Testing AFTER with the „Leela Quantum Infinity Bloc“

In the further BESA test process, the horse-mare Ravelle was associated as a photograph via quantum entanglement with the test object, the "Leela Quantum Infinity Bloc". After an effect duration of 10 minutes, Eva Krankl performed BESA testing on the test subject as a surrogate for the mare Ravelle. This means that the test object was activated in this way for the test person.

**Goal:** Determination of the reaction of the meridian system of the test person (mare Ravelle) in connection with the test object. Can the "Leela Quantum Infinity Bloc" neutralize the bioenergy informative system of the test subject (mare Ravelle)? Determination of the differences of BESA 2 testing AFTER compared to BESA 1 testing BEFORE.

BESA-Test evaluation P75 1.0  
from **13-01-2022 at 18:09 to 18:14** (5 minutes) page 45 and 46

**Result:** The measurement result shows significant improvements in the meridian end points or in the energetic state of the test person - mare Ravelle.

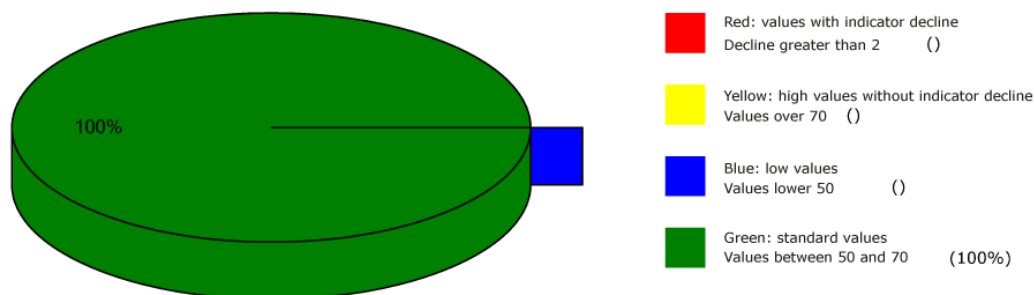
**100 % in the green area**

**Conclusion:** As the graphics show, 10 minutes after confrontation of the test person - mare Ravelle with the "Leela Quantum Infinity Bloc" all measuring points are in the green, optimal and harmonized area (balanced energy system). The BESA test results in a significant improvement of the energy situation in the meridian system of the test person - mare Ravelle Felicitas compared to the BESA 1 tests BEFORE. All measured values were at 50 sct or just above. It can be seen that the "Leela Quantum Infinity Bloc" is able in a very short time to give the deregulations detected in the BESA 1 tests BEFORE the necessary impulse for harmonization (neutralization) into the life-promoting range. The comparisons of the BESA graphs confirm the change and harmonization of the stress factors on the meridian system.

These BESA 2 tests show that the test object, the "Leela Quantum Infinity Bloc" is basically able and suitable to produce a harmonization of the stressful information.



## Overview of BESA measuring



## BESA basic test

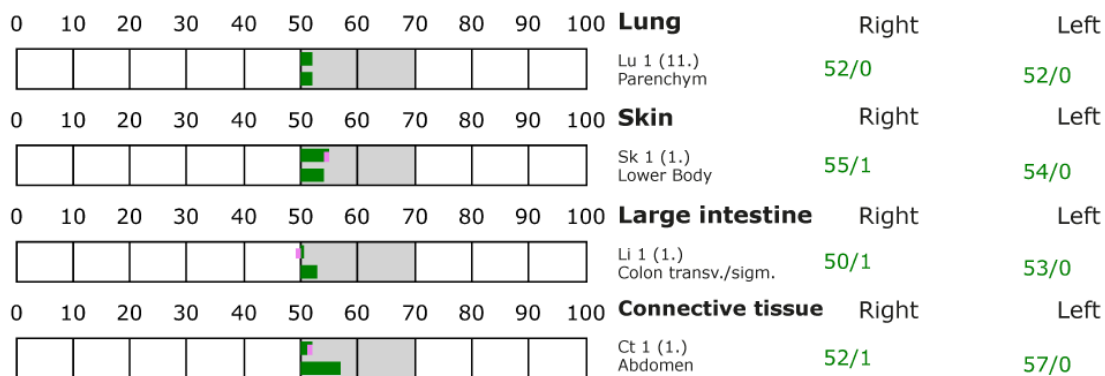
+++ : Indicator decline > 15 Skt.  
++ : Indicator decline 6-15 Skt.  
+ : Indicator decline 3-5 Skt.

T: Total inflammation (>89 Skt.)  
P: Partial inflammation (70-89 Skt.)

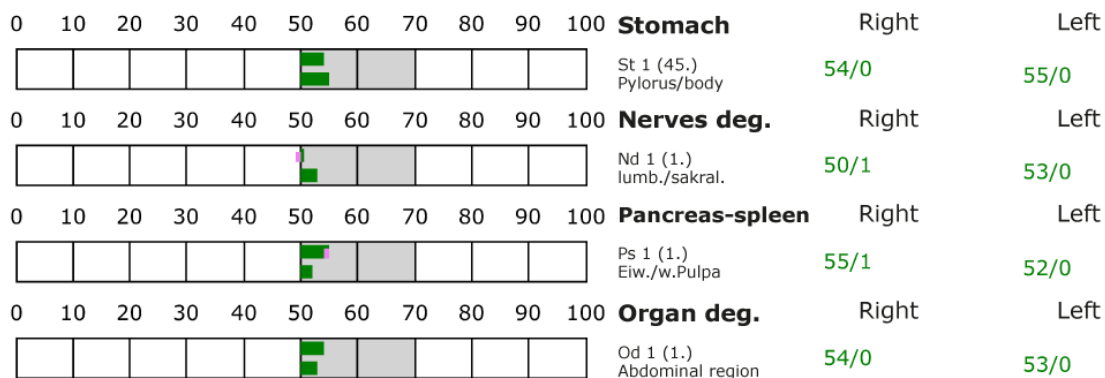
D: Degeneration (< 50 Skt.)

Standard values: (50-70 Skt.)

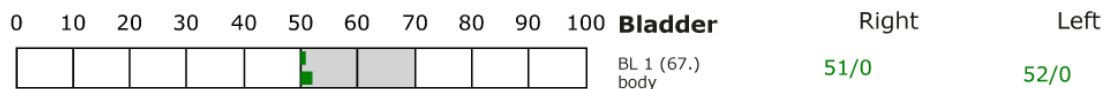
### Element: lu - sk - li - ct



### Element: st - nd - ps - od



### Element: bl - ly - ki - al



## BESA basic test

- +++ : Indicator decline > 15 Skt.
- ++ : Indicator decline 6-15 Skt.
- +: Indicator decline 3-5 Skt.

T: Total inflammation (>89 Skt.)  
P: Partial inflammation (70-89 Skt.)

D: Degeneration (< 50 Skt.)

Standard values: (50-70 Skt.)

Element: bl - ly - ki - al													
0	10	20	30	40	50	60	70	80	90	100	<b>Lymph</b>	Right	Left
										Ly 1 (1.) Tons.Palat.	52/0	57/1	
0	10	20	30	40	50	60	70	80	90	100	<b>Kidney</b>	Right	Left
										Ki 1 (11.) pelvis	52/0	58/1	
0	10	20	30	40	50	60	70	80	90	100	<b>Allergy</b>	Right	Left
										Al 1 (1.) Lower body	54/0	54/1	
Element: ga - jd - li - gd													
0	10	20	30	40	50	60	70	80	90	100	<b>Gall</b>	Right	Left
										Ga 1 (44.) Duct.choled./hep.	52/1	56/2	
0	10	20	30	40	50	60	70	80	90	100	<b>Joint deg.</b>	Right	Left
										Jd 1 (1.) lower extremities	51/0	50/0	
0	10	20	30	40	50	60	70	80	90	100	<b>Liver</b>	Right	Left
										Li 1 (1.) Central veins	52/0	51/0	
0	10	20	30	40	50	60	70	80	90	100	<b>Greasy deg.</b>	Right	Left
										Gd 1 (1.) Abdomen	54/0	55/0	
Element: he - si													
0	10	20	30	40	50	60	70	80	90	100	<b>Heart</b>	Right	Left
										He 1 (9.) Pulm.sm./Aortic valves	57/2	54/0	
0	10	20	30	40	50	60	70	80	90	100	<b>Small intestine</b>	Right	Left
										Si 1 (1.) Ileum	57/0	52/0	
Element: bc - 3e													
0	10	20	30	40	50	60	70	80	90	100	<b>Blood circulation</b>	Right	Left
										Bc 1 (9.) SMP Arteries	54/2	54/0	
0	10	20	30	40	50	60	70	80	90	100	<b>Endocrine</b>	Right	Left
										3e 1 (1.) Gonads/NNI	58/1	54/1	





## Respondent 7 – Gelding Ducesse

### BESA 1 Testing BASIC BEFORE

#### BESA 6 Testing BASIC BEFORE as status

Eva Krankl performed a basic BESA test on the test person (horse-gelding Ducesse), as a surrogate of the animal. All BESA tests were performed on the TING points of the surrogate (40 nail fold points on the fingers and toes).



**Goal:** To establish a basic test (status) to represent the initial energetic situation for all further BESA tests.

BESA-Test evaluation P75 1.0

from **11-01-2022 at 14:44 to 14:48** (4 minutes) page 48 and 49

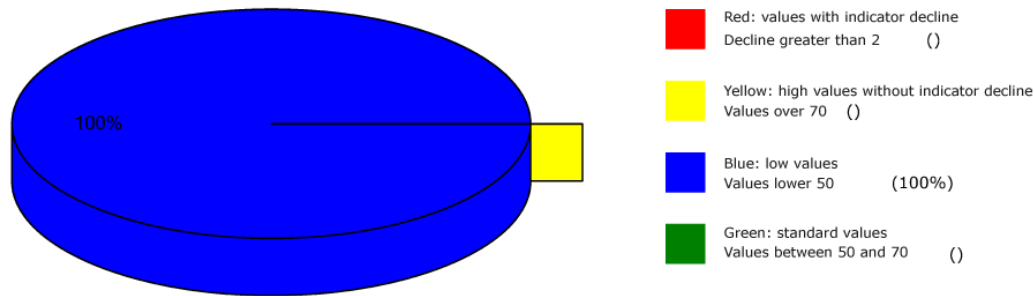
**Result:** The measurement result indicated partly deep energetic stresses at the meridian end points and subsequently on the subordinate metabolic situation of the test person.

**100 % in the blue area**

**Conclusion:** As the graphs show, all measured points are in the degenerative blue range (energy deficiency). These readings interpret a moderate lack of energy at each of the acupuncture points tested. The comparisons of the BESA graphs confirm the stressful influences on the energy-informative events in the meridian system of the test person.



## Overview of BESA measuring



## BESA basic test

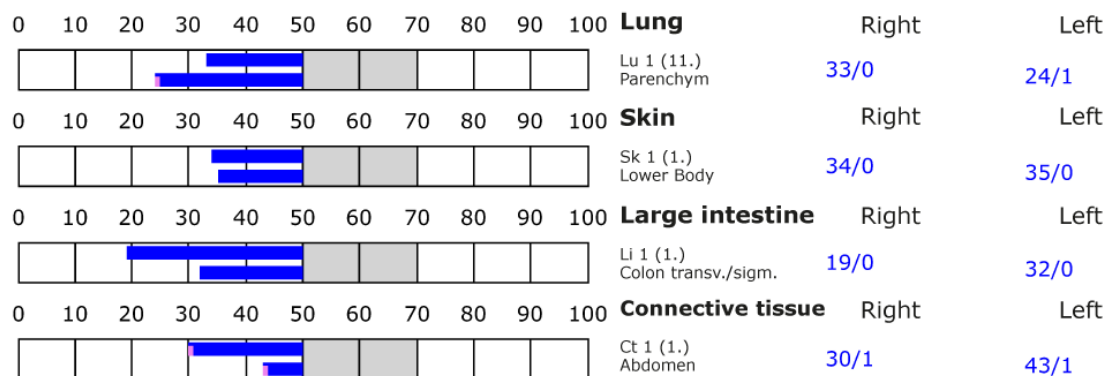
+++ : Indicator decline > 15 Skt.  
++ : Indicator decline 6-15 Skt.  
+ : Indicator decline 3-5 Skt.

T: Total inflammation (>89 Skt.)  
P: Partial inflammation (70-89 Skt.)

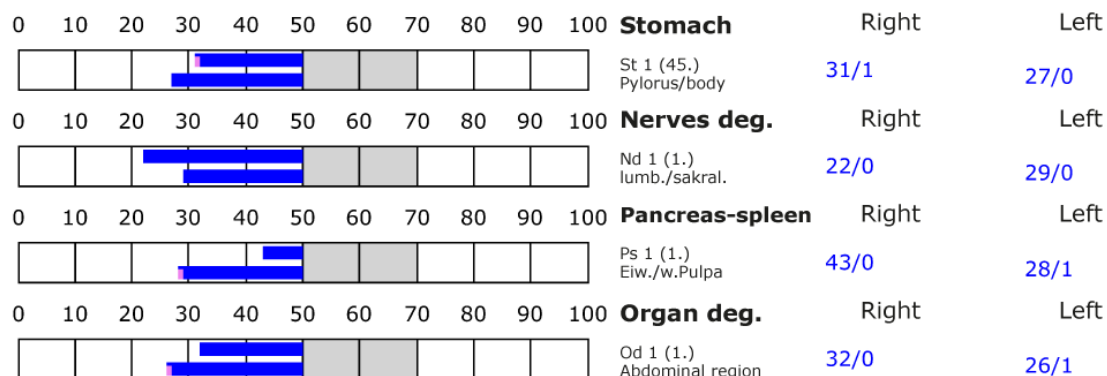
D: Degeneration (< 50 Skt.)

Standard values: (50-70 Skt.)

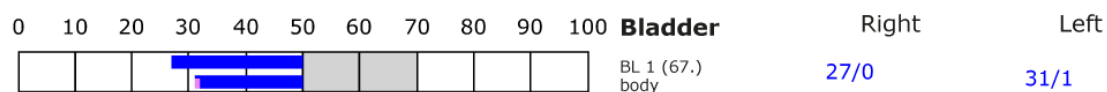
### Element: lu - sk - li - ct



### Element: st - nd - ps - od



### Element: bl - ly - ki - al





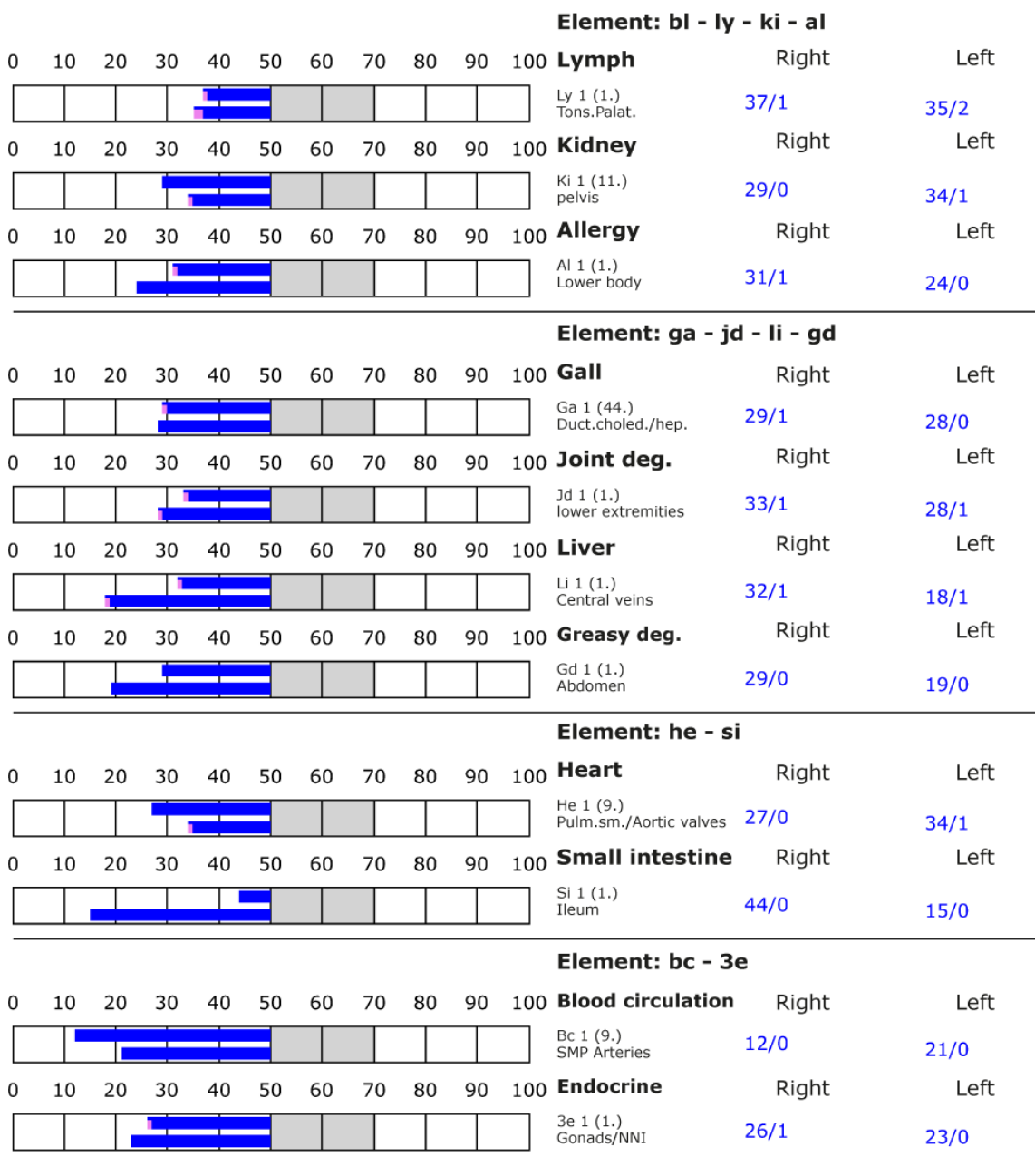
## BESA basic test

+++ : Indicator decline > 15 Skt.  
++ : Indicator decline 6-15 Skt.  
+ : Indicator decline 3-5 Skt.

T: Total inflammation (>89 Skt.)  
P: Partial inflammation (70-89 Skt.)

D: Degeneration (< 50 Skt.)

Standard values: (50-70 Skt.)





## BESA 2 Testing AFTER

### BESA 2 Testing AFTER with the „Leela Quantum Infinity Bloc“

In the further course of the BESA test, the horse gelding Ducesse was associated as a photograph via quantum entanglement with the test object, the "Leela Quantum Infinity Bloc". After an effect duration of 10 minutes, Eva Krankl performed BESA testing on the test subject as a surrogate for the horse gelding Ducesse. This means that the test object was activated in this way for the test person.

**Goal:** To determine the reaction of the meridian system of the test person (gelding Ducesse) in connection with the test object. Can the "Leela Quantum Infinity Bloc" neutralize the bioenergy informative system of the test subject (gelding Ducesse)? Determination of the differences of BESA 2 testing AFTER compared to BESA 1 testing BEFORE.

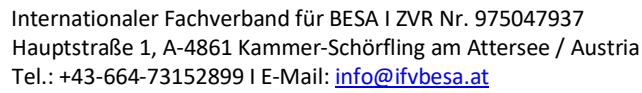
BESA-Test evaluation P75 1.0  
from **13-01-2022 at 18:15 to 18:26** (11 minutes) page 51 and 52

**Result:** The measurement result shows significant improvements in the meridian end points or in the energetic state of the test person - gelding Ducesse.





**100 % in the green area**

**Conclusion:** As the graphs show, 10 minutes after confrontation of the test person - gelding Ducesse with the "Leela Quantum Infinity Bloc" all measuring points are in the green, optimal and harmonized range (balanced energy system). The BESA test results in a significant improvement of the energy situation in the meridian system of the test person - gelding Ducesse compared to the BESA 1 tests BEFORE. All readings were at 50 sct or just above. It can be seen that the "Leela Quantum Infinity Bloc" is able in a very short time to give the deregulations detected in the BESA 1 tests BEFORE the necessary impulse for harmonization (neutralization) into the life-promoting range. The comparisons of the BESA graphs confirm the change and harmonization of the stress factors on the meridian system.

These BESA 2 tests show that the test object, the "Leela Quantum Infinity Bloc" is basically able and suitable to produce a harmonization of the stressful information.



## A 3D pie chart with a green slice representing 100% of the total. The slice is labeled '100%' in black text. The chart is shown from an isometric perspective, giving it a three-dimensional appearance.

-  Red: values with indicator decline  
Decline greater than 2 (%)
-  Yellow: high values without indicator decline  
Values over 70 (%)
-  Blue: low values  
Values lower 50 (%)
-  Green: standard values  
Values between 50 and 70 (100%)

- +++ : Indicator decline > 15 Skt.
- ++ : Indicator decline 6-15 Skt.
- +: Indicator decline 3-5 Skt.

T: Total inflammation (>89 Skt.)  
P: Partial inflammation (70-89 Skt.)

Standard values: (50-70 Skt.)

											Right	Left	
0	10	20	30	40	50	60	70	80	90	100	<b>Lung</b>		
											Lu 1 (11.) Parenchym	53/0	51/0
0	10	20	30	40	50	60	70	80	90	100	<b>Skin</b>	Right	Left
											Sk 1 (1.) Lower Body	51/0	53/0
0	10	20	30	40	50	60	70	80	90	100	<b>Large intestine</b>	Right	Left
											Li 1 (1.) Colon transv./sigm.	52/1	51/0
0	10	20	30	40	50	60	70	80	90	100	<b>Connective tissue</b>	Right	Left
											Ct 1 (1.) Abdomen	51/0	52/0

											Right	Left	
0	10	20	30	40	50	60	70	80	90	100	<b>Stomach</b>	Right	Left
											St 1 (45.) Pylorus/body	52/0	52/0
0	10	20	30	40	50	60	70	80	90	100	<b>Nerves deg.</b>	Right	Left
											Nd 1 (1.) lumb./sakral.	51/0	54/0
0	10	20	30	40	50	60	70	80	90	100	<b>Pancreas-spleen</b>	Right	Left
											Ps 1 (1.) Eiw./w.Pulpa	52/1	53/1
0	10	20	30	40	50	60	70	80	90	100	<b>Organ deg.</b>	Right	Left
											Od 1 (1.) Abdominal region	51/0	50/0

0 10 20 30 40 50 60 70 80 90 100 **Bladder** Right Left

BL 1 (67.)  
body 52/0 55/1



## BESA basic test

+++ : Indicator decline > 15 Skt.  
++ : Indicator decline 6-15 Skt.  
+ : Indicator decline 3-5 Skt.

T: Total inflammation (>89 Skt.)  
P: Partial inflammation (70-89 Skt.)

D: Degeneration (< 50 Skt.)

Standard values: (50-70 Skt.)

Element: bl - ly - ki - al													
0	10	20	30	40	50	60	70	80	90	100	<b>Lymph</b>	Right	Left
											Ly 1 (1.) Tons.Palat.	50/1	51/1
0	10	20	30	40	50	60	70	80	90	100	<b>Kidney</b>	Right	Left
											Ki 1 (11.) pelvis	53/1	52/1
0	10	20	30	40	50	60	70	80	90	100	<b>Allergy</b>	Right	Left
											Al 1 (1.) Lower body	53/0	51/0
Element: ga - jd - li - gd													
0	10	20	30	40	50	60	70	80	90	100	<b>Gall</b>	Right	Left
											Ga 1 (44.) Duct.choled./hep.	52/1	54/2
0	10	20	30	40	50	60	70	80	90	100	<b>Joint deg.</b>	Right	Left
											Jd 1 (1.) lower extremities	54/0	52/0
0	10	20	30	40	50	60	70	80	90	100	<b>Liver</b>	Right	Left
											Li 1 (1.) Central veins	52/0	51/1
0	10	20	30	40	50	60	70	80	90	100	<b>Greasy deg.</b>	Right	Left
											Gd 1 (1.) Abdomen	53/0	53/1
Element: he - si													
0	10	20	30	40	50	60	70	80	90	100	<b>Heart</b>	Right	Left
											He 1 (9.) Pulm.sm./Aortic valves	57/1	52/0
0	10	20	30	40	50	60	70	80	90	100	<b>Small intestine</b>	Right	Left
											Si 1 (1.) Ileum	52/0	52/0
Element: bc - 3e													
0	10	20	30	40	50	60	70	80	90	100	<b>Blood circulation</b>	Right	Left
											Bc 1 (9.) SMP Arteries	53/1	51/0
0	10	20	30	40	50	60	70	80	90	100	<b>Endocrine</b>	Right	Left
											3e 1 (1.) Gonads/NNI	51/0	53/0



## Proband 8 – Goat Klara

### BESA 1 Testing BASIC BEFORE

#### BESA 6 Testing BASIC BEFORE as a status

Eva Krankl performed a basic BESA measurement on the test person (goat Klara), as a surrogate of the animal. All BESA tests were performed on the TING points of the surrogate (40 nail fold points on the fingers and toes).



**Goal:** To establish a basic test (status) to represent the initial energetic situation for all further BESA tests.

BESA-Test evaluation P75 1.0

from **13-01-2022 at 18:29 to 18:37** (8 minutes) page 54 and 55

**Result:** The measurement result indicated partly deep energetic stresses at the meridian end points and subsequently on the subordinate metabolic situation of the test person.

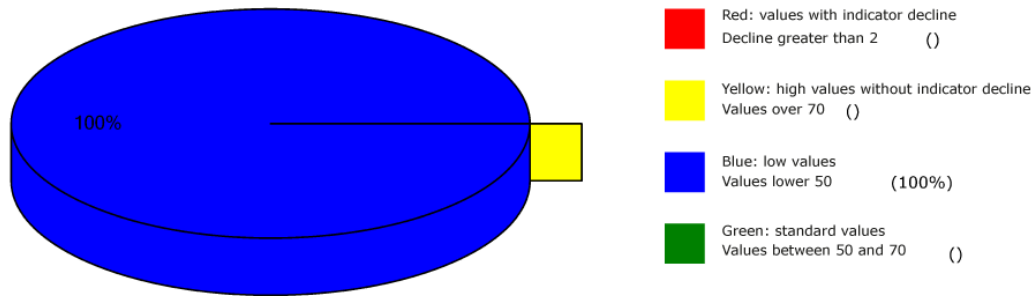
**100 % in the blue area**

**Conclusion:** As the graphs show, all measurement points are in the degenerative blue range (energy deficiency). These readings interpret a moderate lack of energy at each of the acupuncture points tested. The comparisons of the BESA graphs confirm the stressful influences on the energy-informative events in the meridian system of the test person.





## Overview of BESA measuring



## BESA basic test

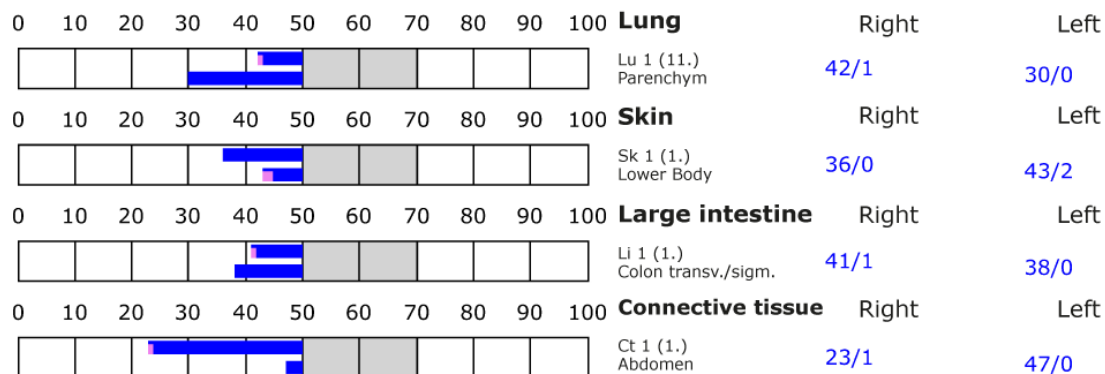
+++ : Indicator decline > 15 Skt.  
++ : Indicator decline 6-15 Skt.  
+ : Indicator decline 3-5 Skt.

T: Total inflammation (>89 Skt.)  
P: Partial inflammation (70-89 Skt.)

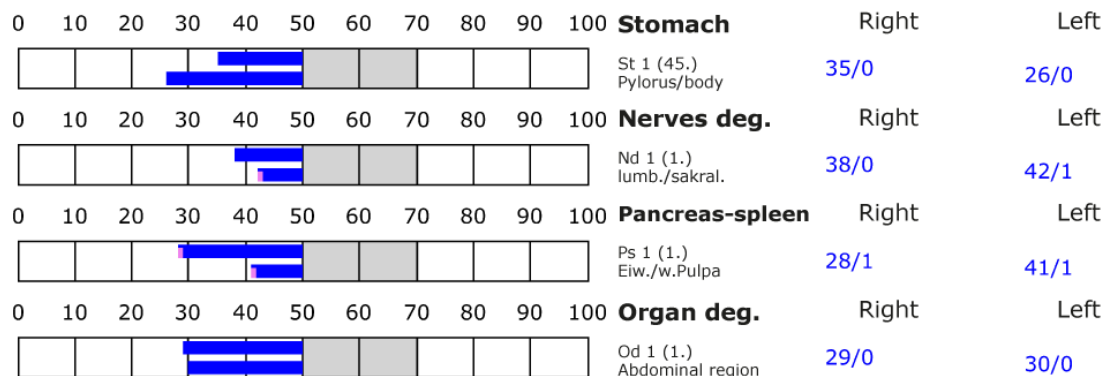
D: Degeneration (< 50 Skt.)

Standard values: (50-70 Skt.)

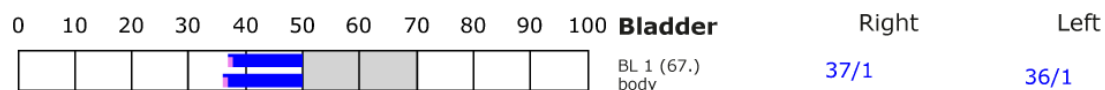
### Element: lu - sk - li - ct



### Element: st - nd - ps - od



### Element: bl - ly - ki - al





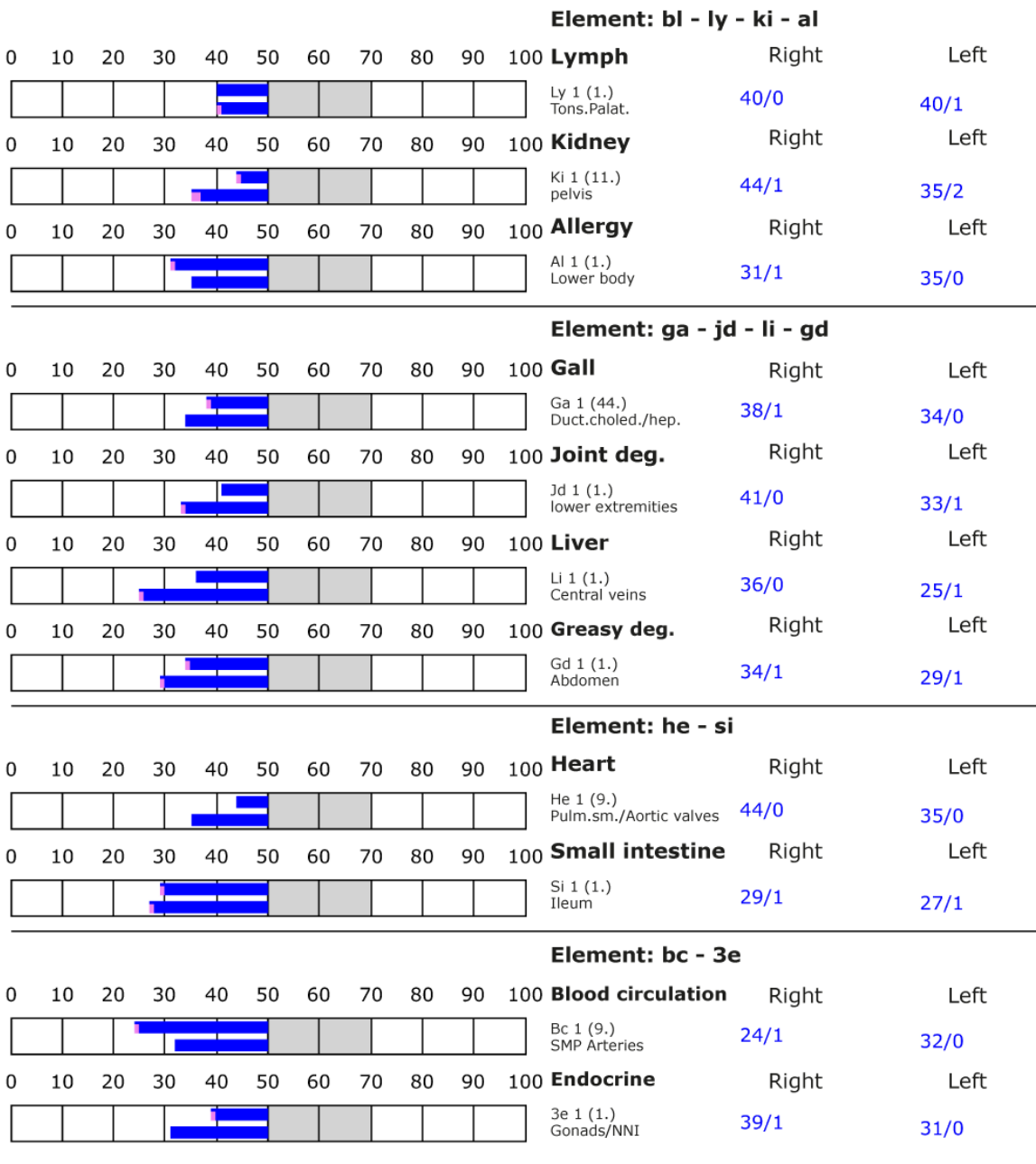
## BESA basic test

+++ : Indicator decline > 15 Skt.  
++ : Indicator decline 6-15 Skt.  
+ : Indicator decline 3-5 Skt.

T: Total inflammation (>89 Skt.)  
P: Partial inflammation (70-89 Skt.)

D: Degeneration (< 50 Skt.)

Standard values: (50-70 Skt.)





## BESA 2 Testing AFTER

### BESA 2 Testing AFTER with the „Leela Quantum Infinity Bloc“

In the further course of the BESA test, the goat Klara was associated as a photograph via quantum entanglement with the test object, the "Leela Quantum Infinity Bloc". After an effect duration of 10 minutes, Eva Krankl performed BESA testing on the test subject as a surrogate for the Goat Klara. This means that the test object was activated in this way for the test person.

**Goal:** Determination of the reaction of the meridian system of the test person (goat Klara) in connection with the test object. Can the "Leela Quantum Infinity Bloc" neutralize the bioenergy informative system of the test subject (Klara the goat)? Determination of the differences of BESA 2 testing AFTER compared to BESA 1 testing BEFORE.

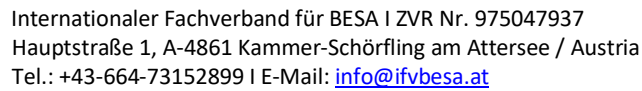
BESA-Test evaluation P75 1.0  
from **13-01-2022 at 19:02 to 19:07** (5 minutes) page 57 and 58

**Result:** The measurement result shows significant improvements in the meridian end points or in the energetic state of the test person - Klara the goat.

**100 % in the green area**

**Conclusion:** As the graphs show, 10 minutes after confrontation of the test person - goat Klara with the "Leela Quantum Infinity Bloc" all measuring points are in the green, optimal and harmonized area (balanced energy system). The BESA test results in a significant improvement of the energy situation in the meridian system of the test person - goat Klara compared to the BESA 1 tests BEFORE. All measured values were at 50 Skt or just above. It can be seen that the "Leela Quantum Infinity Bloc" is able in a very short time to give the deregulations detected in the BESA 1 tests BEFORE the necessary impulse for harmonization (neutralization) into the life-promoting range. The comparisons of the BESA graphs confirm the change and harmonization of the stress factors on the meridian system.

These BESA 2 tests show that the test object, the "Leela Quantum Infinity Bloc" is basically able and suitable to produce a harmonization of the stressful information.



## A 3D pie chart with a green slice representing 100%. The slice is labeled '100%' in black text. The chart is shown from an isometric perspective, giving it a three-dimensional appearance.

- Fa. Leela Quantum Tech, LLC

## BESA basic test

- +++ : Indicator decline > 15 Skt.
- ++ : Indicator decline 6-15 Skt.
- +: Indicator decline 3-5 Skt.

T: Total inflammation (>89 Skt.)  
P: Partial inflammation (70-89 Skt.)

D: Degeneration (< 50 Skt.)

Standard values: (50-70 Skt.)

Element: bl - ly - ki - al													
<div><div></div><div></div><div></div><div></div><div></div><div></div><div></div><div></div><div></div><div></div><div></div></div>											<b>Lymph</b>	Right	Left
<div><div></div><div></div><div></div><div></div><div></div><div></div><div></div><div></div><div></div><div></div><div></div></div>											Ly 1 (1.) Tons.Palat.	52/0	51/1
<div><div></div><div></div><div></div><div></div><div></div><div></div><div></div><div></div><div></div><div></div><div></div></div>											<b>Kidney</b>	Right	Left
<div><div></div><div></div><div></div><div></div><div></div><div></div><div></div><div></div><div></div><div></div><div></div></div>											Ki 1 (11.) pelvis	51/1	52/0
<div><div></div><div></div><div></div><div></div><div></div><div></div><div></div><div></div><div></div><div></div><div></div></div>											<b>Allergy</b>	Right	Left
<div><div></div><div></div><div></div><div></div><div></div><div></div><div></div><div></div><div></div><div></div><div></div></div>											Al 1 (1.) Lower body	52/1	52/0
Element: ga - jd - li - gd													
<div><div></div><div></div><div></div><div></div><div></div><div></div><div></div><div></div><div></div><div></div><div></div></div>											<b>Gall</b>	Right	Left
<div><div></div><div></div><div></div><div></div><div></div><div></div><div></div><div></div><div></div><div></div><div></div></div>											Ga 1 (44.) Duct.choled./hep.	51/1	54/1
<div><div></div><div></div><div></div><div></div><div></div><div></div><div></div><div></div><div></div><div></div><div></div></div>											<b>Joint deg.</b>	Right	Left
<div><div></div><div></div><div></div><div></div><div></div><div></div><div></div><div></div><div></div><div></div><div></div></div>											Jd 1 (1.) lower extremities	55/0	53/0
<div><div></div><div></div><div></div><div></div><div></div><div></div><div></div><div></div><div></div><div></div><div></div></div>											<b>Liver</b>	Right	Left
<div><div></div><div></div><div></div><div></div><div></div><div></div><div></div><div></div><div></div><div></div><div></div></div>											Li 1 (1.) Central veins	52/0	51/0
<div><div></div><div></div><div></div><div></div><div></div><div></div><div></div><div></div><div></div><div></div><div></div></div>											<b>Greasy deg.</b>	Right	Left
<div><div></div><div></div><div></div><div></div><div></div><div></div><div></div><div></div><div></div><div></div><div></div></div>											Gd 1 (1.) Abdomen	50/0	51/0
Element: he - si													
<div><div></div><div></div><div></div><div></div><div></div><div></div><div></div><div></div><div></div><div></div><div></div></div>											<b>Heart</b>	Right	Left
<div><div></div><div></div><div></div><div></div><div></div><div></div><div></div><div></div><div></div><div></div><div></div></div>											He 1 (9.) Pulm.sm./Aortic valves	53/1	53/0
<div><div></div><div></div><div></div><div></div><div></div><div></div><div></div><div></div><div></div><div></div><div></div></div>											<b>Small intestine</b>	Right	Left
<div><div></div><div></div><div></div><div></div><div></div><div></div><div></div><div></div><div></div><div></div><div></div></div>											Si 1 (1.) Ileum	51/0	51/1
Element: bc - 3e													
<div><div></div><div></div><div></div><div></div><div></div><div></div><div></div><div></div><div></div><div></div><div></div></div>											<b>Blood circulation</b>	Right	Left
<div><div></div><div></div><div></div><div></div><div></div><div></div><div></div><div></div><div></div><div></div><div></div></div>											Bc 1 (9.) SMP Arteries	51/1	54/0
<div><div></div><div></div><div></div><div></div><div></div><div></div><div></div><div></div><div></div><div></div><div></div></div>											<b>Endocrine</b>	Right	Left
<div><div></div><div></div><div></div><div></div><div></div><div></div><div></div><div></div><div></div><div></div><div></div></div>											3e 1 (1.) Gonads/NNI	51/1	53/0



## The results of the BESA tests at a glance

### Respondent 1

#### Cat Bubi

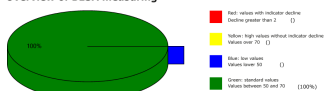
BESA 1 Testing BASIC BEFORE as a energetic status

Overview of BESA measuring



BESA 2 Testing BASIC AFTER after confrontation of the test person with the "Leela Quantum Infinity Bloc"

Overview of BESA measuring

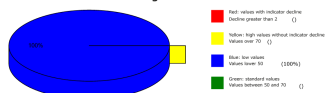


### Respondent 2

#### Cat Mia

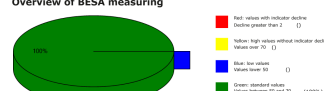
BESA 1 Testing BASIC BEFORE as a energetic status

Overview of BESA measuring



BESA 2 Testing BASIC AFTER after confrontation of the test person with the „Leela Quantum Infinity Bloc“

Overview of BESA measuring

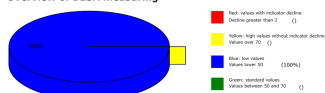


### Respondent 3

#### Cat Kaspar

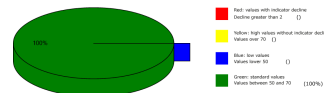
BESA 1 Testing BASIC BEFORE as a energetic status

Overview of BESA measuring



BESA 2 Testing BASIC AFTER after confrontation of the test person with the „Leela Quantum Infinity Bloc“

Overview of BESA measuring



### Respondent 4

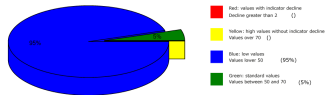
#### Dog-male Sammy

BESA 1 Testing BASIC BEFORE as a energetic status

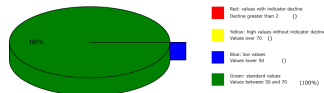
BESA 2 Testing BASIC AFTER after confrontation of the test person with the „Leela Quantum Infinity Bloc“



Overview of BESA measuring



Overview of BESA measuring



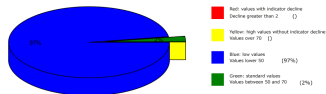
## Respondent 5

### Bitch Felicita

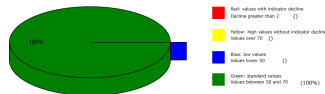
BESA 1 Testing BASIC BEFORE  
as a energetic status

BESA 2 Testing BASIC AFTER  
after Konfrontation des  
Probanden mit der „Pet Matte L“  
Bloc“

Overview of BESA measuring



Overview of BESA measuring



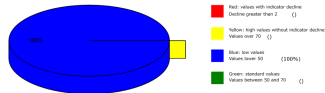
## Respondent 6

### Horse- mare Ravelle

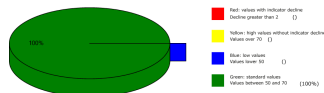
BESA 1 Testing BASIC BEFORE  
as a energetic status

BESA 2 Testing BASIC NACHHER  
nach Konfrontation des  
Probanden mit der „Pet Matte L“  
with the „Leela Quantum Infinity  
Bloc“

Overview of BESA measuring



Overview of BESA measuring



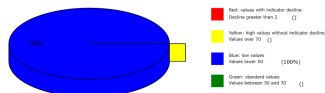
## Respondent 7

### Horse- Gelding Ducesse

BESA 1 Testing BASIC BEFORE  
as a energetic status

BESA 2 Testing BASIC AFTER after  
confrontation of the test person  
with the „Leela Quantum Infinity  
Bloc“

Overview of BESA measuring



Overview of BESA measuring



## Respondent 8

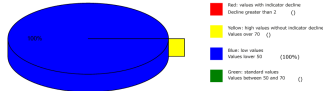
### Goat Klara





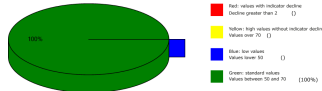
## BESA 1 Testing BASIC BEFORE as a energetic status

Overview of BESA measuring



## BESA 2 Testing BASIC AFTER after confrontation of the test person with the „Leela Quantum Infinity Bloc“

Overview of BESA measuring



## Generell information about the Test result

The human being, as well as all biological objects (also animals and plants) represents a kind of receiving antenna for environmental information. This is because the life, especially of humans, animals and plants depends basically and exclusively on environmental information. Our organism is biologically very sensitive where natural information (fields) are located or where this natural information is subject to interactions and fluctuations. The situation is all the more dangerous when such fields of constructive structures are disturbed by various environmental stresses.

**For this reason, detected informative electromagnetic interference fields are biologically highly relevant. Any reduction or transformation of these interference fields (ideally to 100 percent) is biologically very important, in some cases even vital.** These information loads from our, primarily artificial, environment are only compatible with life if they can be readjusted to a natural fluctuation tolerance. Disturbances, problems, blockades, disharmonies in the biological control circuit of biological objects, especially in animals, find their causes in such disturbing information influences.

**Neutralizing or harmonizing effects could be proven in this project P75 1.0 to determine the effect of the test object, the "Leela Quantum Infinity Bloc" on animals. The "Leela Quantum Infinity Bloc" was able to neutralize the biologically detrimental effects and effects of the tested stress factors found in the animal test subjects.**

**The significant ability of the test object, the "Leela Quantum Infinity Bloc" to neutralize and harmonize the stress factors tested in this project P75 1.0 is hereby proven. The transformation of the tested information into bioenergy information with biological and life-promoting quality is proven with this project.**

## Authorized Summary

The BESA tests carried out by IFVBESA on the energetic and physical effectiveness of the test object, the "Leela Quantum Infinity Bloc", have clearly shown that this test object is able to neutralize or harmonize biologically significant stress factors at the acupuncture points of the test subjects. Via the bio-energy-informative system analysis, the effect of the above-mentioned stress factors on the animal test subjects, its meridian systems and its energy-



informative-biological control circuits was scrutinized and systemically tested on the energy-informative level. The BESA tests BEFORE - AFTER show significant changes at the tested acupuncture points at the meridian system of the test person (animals). The measurement data as well as their key figures impressively confirm on the one hand the stresses that the tested factors cause on the human organism, and on the other hand they clarify how after the application of the test object, the "Leela Quantum Infinity Bloc", the deregulating energies are transformed into body-immanent and biocompatible energies.

From a holistic point of view, it can be assumed that the positive effect on the test subjects - animals also occurs in other animals. That the positive influence by the "Leela Quantum Infinity Bloc" with high precision is actually possible, is clearly shown by this test by the BESA-PRE-AFTER-AFTER comparison against 6 different animals (test persons). All measured values improved significantly from the mostly 100% blue measuring range into the green, mostly 50 Skt. range (Skt = scale value), i.e. the range of optimal measured values. This means: an optimal regulation dynamic has taken place. Here, in the sense of the IFVBESA, one can clearly speak of an optimal, significant improvement of the body's own energy situation.

## Result

The test persons - animals were connected in the BESA-AFTER testing in each case with test object. In contrast to the BESA BEFORE tests, in which the test object, the "Leela Quantum Infinity Bloc" was not used, consistently positive measurement results were found, which indicate a neutralization or harmonization that has taken place. The regulation dynamics developed into an optimal effective range.

By demonstrating the energy informative effectiveness of the test object "Leela Quantum Infinity Bloc" towards pets in this project P75 1.0, the requirements for obtaining a BESA seal of approval by the International Professional Association for BESA were met.