



IFVBESA

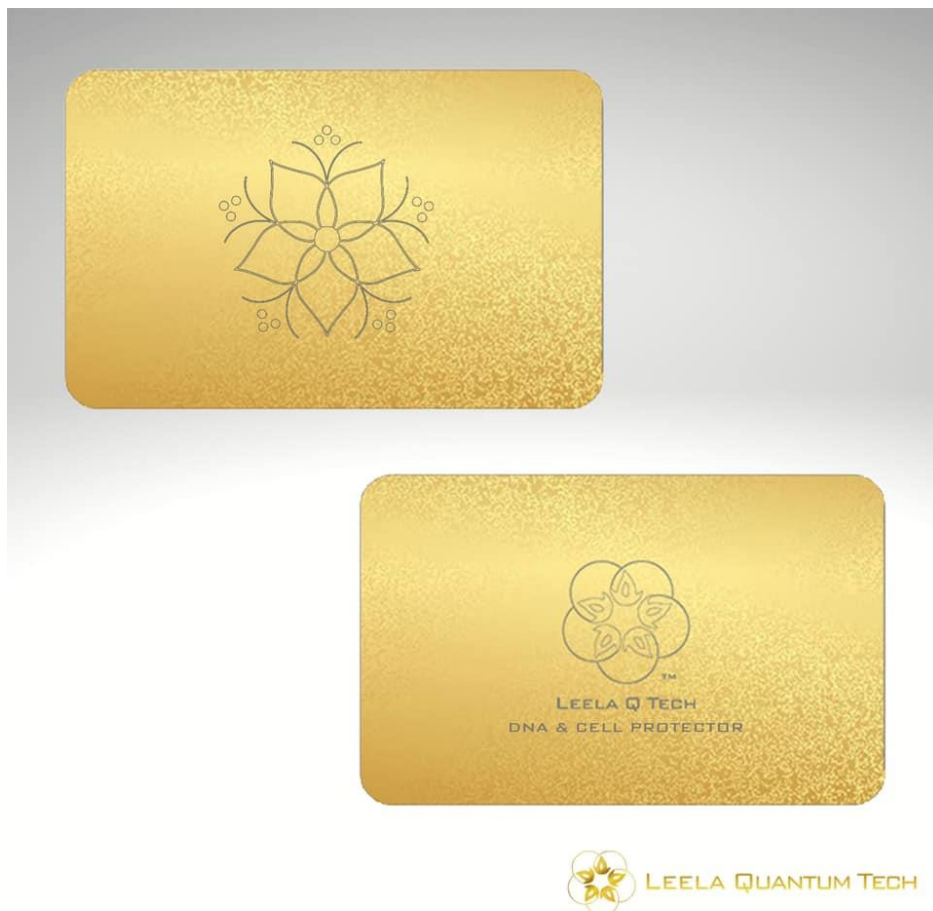
Information is crucial

P74 2.0 BESA-Detailed Project
Stress factors due to mRNA vaccine
DNA & Cell Protector Card



Detailed- Project P74 2.0 to BESA expert opinion

Bioenergy informative system analysis within the framework of the
BESA seal of approval about the effectiveness
of the product "Leela Quantum DNA & Cell Protector Card
on stress factors by mRNA vaccine
in the project also called "test object"





Client:

Leela Quantum Tech, LLC
Attn: Eleonora Goldenberg
1421 LUISA STREET, STE G
SANTA FEE, NM 87505
USA

Project participants:

Project leader: Wolfgang Hans Albrecht, president and scientific director of the IFVBESA

Testing person: Eva Krankl, Vice president and deputy scientific director of the IFVBESA

Respondent: 7 anonymous test persons with different health conditions and age or gender.

Detail project P74 1.0 Respondent 1: woman aged 58 years, corona unvaccinated, high vitality level, was tested with digitized mRNA vaccine in correlation with specific EMSF.

Detail project P74 2.0 **Respondent 2+3:** The two subjects, female aged 48 years and male aged 65 years were injected with a so-called Corona mRNA vaccine.

Detail project P74 3.0 Respondent 4,5 + 6: Woman aged 64 years, man aged 61 years and woman aged 36 years, all 3 Corona unvaccinated, were tested for spike proteins and viral fragments.

Detail project P73 4.0 Respondent 7: Subject aged 80 years, 2x Corona mRNA vaccinated, was tested for the effect of the test object against spike proteins, virus fragments and graphene oxide.

other participants: none

Project location: location of IFVBESA (international professional association for bio energie information system analysis), Hauptstraße 1, A-4861 Kammer/Schörfling am Attersee

Date: 27.10.2021 until 16.11.2021

Project duration: 21 Days



Content

BESA legend for interpretation of BESA-measurement result	5
Basics of the research project creation P74 2.0.....	6
Research Support Services of the IFVBESA - BESA Reference Tests	7
Research project description	7
Test procedure	9
The results of the BESA tests at a glance.....	28
General information about the test result	29

Important notes

The client has the right to use this expert opinion. Irrespective of this, this expert opinion represents intellectual property of IFVBESA as the contractor. The contractor is entitled to use this expert opinion for other purposes, if this does not violate the client's data protection and confidentiality obligations. Apart from this, this expert opinion, with the exception of the "authorized abridged version", may not be changed or passed on in abridged form without the consent of the IFVBESA. The order for this project refers to bioenergetically measurable values and their interpretation according to the guidelines of BESA or the IFVBESA. The maintenance of the quality of the tested products as well as their regular control are the task and responsibility of the client. Investigation of the manufacture, mechanism of action or interpretations of the Client's products to third parties are not the responsibility or task of the Contractor. Video recordings may only be made with the permission of IFVBESA.



BESA legend for interpretation of BESA-measurement result

The measured value of 50 on the tested meridian represents an optimal energetic state in this organ or its subordinate and superordinate levels. Also measured values in the range of 50 to max. 70 still count as a neutral and balanced energy status. The organism is able to regulate irritations of the system (wrong environmental signals) very well.

Readings above 70 to 100 represent the inflammatory range or a so-called energy surplus in response to the irritation of the system by environmental signals corresponding to it. After reaching the maximum values, the energy state tilts into the degenerative (blue) range.

Readings from below 50 to near 0 represent the so-called degenerative measurement range or a lack of energy in response to the stimulation of the system by environmental signals corresponding to it.

Measured values represented by a so-called pointer drop of more than 3 scale lines indicate a total deregulation. The influence of certain environmental signals then leads to such strong system overloads, which can only be harmonized by corresponding new signals.

BESA Indicators:

- up to 0,79** very deep energetic regulation disorder (SSD) energy deficiency
- 0,8 to 1,19** severe energy regulation disorder (SD) degeneration/energy deficiency
- 1,2 to 1,59** energetic regulation disorder (D) degeneration/energy deficiency
- 1,6 to 1,99** degenerative transition area (DÜ)
- 2,0 to 2,39** optimal regulation (OR)
- 2,4 to 2,79** in regulation (R)
- 2,8 to 3,19** partial inflammation = regional energy excess (PE)
- from 3,2** total inflammation = strong general energy surplus (TE)



Basics of the research project creation P74 2.0

The international association for bioenergetic system analysis was commissioned by the company Leela Quantum Tech LLC to test or prove the effect of the test object "Leela Quantum DNA & Cell Protector Card" by means of bioenergetic system analysis (BESA). The testing took place independently of the subjective feeling of the test person.

Description of the "Leela Quantum DNA & Cell Protector Card" by the client:

Our DNA and cells are at the heart of our physical existence, and strengthening and protecting them from potentially harmful substances, influences and external forces is key to our overall well-being. The big questions these days are: Have you been vaccinated or are you being vaccinated? Or do you want to forgo a Corona vaccination, but are concerned that you may ingest or become infected by so-called spike proteins through people who have been vaccinated with an mRNA or vector-based vaccine? In either case, you are concerned about keeping your DNA and cells pure, strong and in the best possible shape. This high power frequency set is a masterpiece that has been developed and tested by the best healers in our network together, for which we are very grateful. It is designed to energize and support body systems and performance. All subjects report that it increases vitality, clarity and well-being. While each person's response to external fields, forces and substances is unique, this set of frequencies has been shown to reduce stress and its influence.

Further, the developer believes that the "Leela Quantum DNA & Cell Protector Card" as follows:

- strengthens the cells
- strengthens the DNA
- creates the awareness in the cells to be able to optimize their function in a natural way, thus building the greatest possible protection against harmful foreign substances and information

Furthermore, the company "Leela Quantum Tech, LLC" claims about tests that were carried out, that side effects caused by the mRNA vaccination on the body or in the brain could be reversed by the "Leela Quantum DNA & Cell Protector Card". Furthermore, it is assumed that these effects should also occur with other similar vaccinations or vector-like vaccinations.

- protects unvaccinated people from becoming infected by shedding

Due to its mode of operation, it has a wide range of applications. In the case of this project, the "Leela Quantum DNA & Cell Protector Card" is used for various modern, so-called mRNA or vector-based vaccines and their effect on the human body.

Due to its mode of operation, it has a wide range of applications

In the case of this project it is about the application of the "Leela Quantum DNA & Cell Protector Card" with various modern, so-called mRNA or vector-based vaccines and their effect on the human body. In this detailed project P74 2.0 the effect of a mRNA vaccine on the energetic system of two test persons and subsequently also in connection with special



electromagnetic interference fields (EMSF) like mobile phone radiation in the range of 5G is tested. Both subjects were injected 2x with an mRNA vaccine. In both subjects the vaccinations took place in an interval of 6 weeks. The last vaccination was performed at the end of August. Subject 1 felt tired at the time of BESA testing and complained of intermittent perceptual disturbances. Subject 2 felt very fit at the time of BESA testing according to his statements.

Research Support Services of the IFVBESA - BESA Reference Tests

The project P74 2.0 deals specifically with the proof of effect of the "Leela Quantum DNA & Cell Protector Card" against two test persons who were injected 2x each with a known mRNA vaccine at known intervals. Likewise, the effect of the "Leela Quantum DNA & Cell Protector Card" is tested on the test subjects when they are simultaneously confronted with certain electromagnetic interference fields (EMSF). **IMPORTANT:** These include radiation from a cell phone in 5G operation (2.64GHz).

The "Leela Quantum DNA & Cell Protector Card" is tested according to the client's request within the framework of the applicable conditions of the IFVBESA for the award of quality seals. In principle, seals of approval are awarded in three categories depending on the significance of the test results, taking into account all tests of a project. For the "Leela Quantum DNA & Cell Protector Card" it is to be determined whether by its application stresses over already mentioned stress factors such as the administered mRNA vaccine to the test person as well as possible correlations of these with certain activated EMSF and in consequence of it in the energy system of the test person (biological system) developing or existing disturbances, problems, blockades, disharmonies can be harmonized, neutralized and thus negative pathological conditions by positive conditions be replaced. This will be questioned in the following commissioned tests of this project.

Research project description

The reason for the test is to prove the functionality of the "Leela Quantum DNA & Cell Protector Card" by test results obtained by additionally confronting the test subjects injected with the mRNA vaccine with precisely selected EMSF-carrying objects in order to significantly demonstrate and compare their reactions without the "test object" and with the "test object". The subjects will be exposed to the EMSF-carrying objects in a BEFORE measurement and tested and in the AFTER measurement they will be exposed to the test object "Leela Quantum DNA & Cell Protector Card" in addition to the mentioned stress factors and tested.

- The BEFORE measurements are performed without the "Leela Quantum DNA & Cell Protector Card"
- The AFTER measurements are performed with the "Leela Quantum DNA & Cell Protector Card"



The question in each AFTER measurement was: "Is the "test object" suitable and able to harmonize or neutralize the so perceived negative effects of the mRNA vaccine as well as its correlation with the specific EMSF on the organism?"

The appropriately designed tests should provide information about this by comparing the pre-measurement without the "Leela Quantum DNA & Cell Protector Card" with the test results of the post-measurements to be carried out using the "Leela Quantum DNA & Cell Protector Card".

The purpose of "Leela Quantum Tech, LLC" is to determine whether the test object "Leela Quantum DNA & Cell Protector Card" is suitable for harmonizing and/or neutralizing the disturbances, problems, blockages, disharmonies in the meridian system of the test persons (biological object) resulting from the above-mentioned stress factors, as noted in the product description.

General information transmission of the test object

The information transmission takes place from the hyperspace of the test object to the hyperspace of biological objects (humans, animals, plants). From there the information reaches the reference space or the energy space via so-called interaction channels. This is a union of, among other things, all organs and energy forms in the biological object. There, the information of the program can dynamically materialize and thus change current states. The changes can appear in the form of neutralization or harmonization of disturbances, dissolution of problems, blockages and disharmonies.

Conditions:

The BESA tests are performed on the premises of the IFVBESA under laboratory conditions, at a room temperature of 20°Celsius, on a natural wooden floor. The test persons are deswitcht (made testable) before the BESA tests or the test possibility is questioned with the test persons.

- Pos.1** BESA 1 Test Basic (bioenergetic status) on the test persons
- Pos.2** BESA testing with confrontation of the test persons with the EMSF leading objects of the cell phones.
- Pos.3** BESA testing during confrontation of the test persons with the EMSF leading objects of the cell phones and the "Leela Quantum DNA & Cell Protector Card"
- Pos.4** Evaluation of the results in the project as well as summary in an appropriate expert opinion according to the sample

Procedure and specifications for the execution

1. **BESA - an basic measurement of the test persons** at all previously determined measuring points (TING points) serve to determine the actual condition. The results are determined exactly according to the BESA specifications and documented via the BESA graphs.



2. **the test persons** are brought into contact with the EMSF-carrying objects of the activated cell phones depending on the project, whereby the sequence discussed with the developer was considered as a specification and is adhered to accordingly. In order to be able to determine the current energy state, the measuring points mentioned under point 1 are measured in the same sequence and for the same duration for each test of the load factors. The results are determined exactly according to the BESA specifications and documented via the BESA graphs..
3. **Activation of the "Leela Quantum DNA & Cell Protector Card" test object**
 - 3.1. When **activating the "Leela Quantum DNA & Cell Protector Card"**, it is brought into the measurement area as specified by the client.
 - 3.2. The test persons are brought into contact with the load factors of the EMSF-carrying objects. The measuring points mentioned in point 1 are measured in the same order and time duration to determine the actual energy state. The results are determined exactly according to the BESA specifications and documented via the BESA graphs.

Test procedure

BESA 1 Testing BASIC BEFORE as status

In the first step, a basic bioenergetic test (bioenergetic status) is performed on the meridian end points (TING points) of the test person.

BESA 2 testing BEFORE with the EMSF-carrying objects of the cell phones

In the further BESA test procedure, the subjects are brought into contact with the EMSF-carrying objects of the activated cell phones and tested. The questions are: How does the meridian system react? How does the energetic status change when confronted with the activated cell phones? What are the differences compared to the BESA 1 BASIC test BEFORE?

BESA 3 testing AFTER with the EMSF-carrying objects of the cell phones as well as the "Leela Quantum DNA & Cell Protector Card"

In the last BESA test, all the stress factors already tested above as well as the "Leela Quantum DNA & Cell Protector Card" are introduced into the measurement circuit. Now the question is: How does the meridian system of the test person react within the area of effect of the "Leela Quantum DNA & Cell Protector Card" when all the stress factors already tested are activated at the same time?



Respondent 1

BESA 1 Testing BASIC BEFORE

BESA 1 Testing BASIC BEFORE as status

Eva Krankl performed a basic BESA measurement on the subject. All BESA tests were performed at the TING points (40 nail fold points on the fingers and toes).

Goal: The creation of a basic test (status) for the representation of the energetic initial situation for all further BESA tests.

BESA-Test evaluation P74 2.0

from **05-11-2021 at 10:51 to 10:56** (4 minutes) page 11 and 12

Result: The measurement result indicated energetic stresses at the meridian end points and subsequently on the subordinate metabolic situation of the test person.

97 % in the blue area

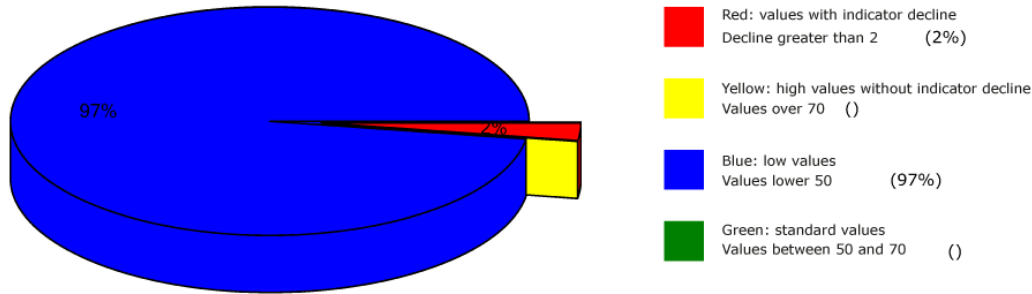
2 % in the red area

1 % in the yellow transition area

Conclusion: As the graphs show, almost all of the measured points are in the degenerative blue area (energy deficiency). 2% of the measured values are in the red area. The red readings represent total deregulation of these energy- cycles. This means that the energy system would be severely damaged by permanent influences of such or similar interference fields in the organism of the test person. For a balancing of these red measured values or in other words: for a harmonization of the values the energy system needs either the exit from the area of the tested fields or a very strong positive impulse from outside (harmonizing influence from the environment). The comparisons of the BESA graphs confirm the stressing influences on the test person.



Overview of BESA measuring



BESA basic test

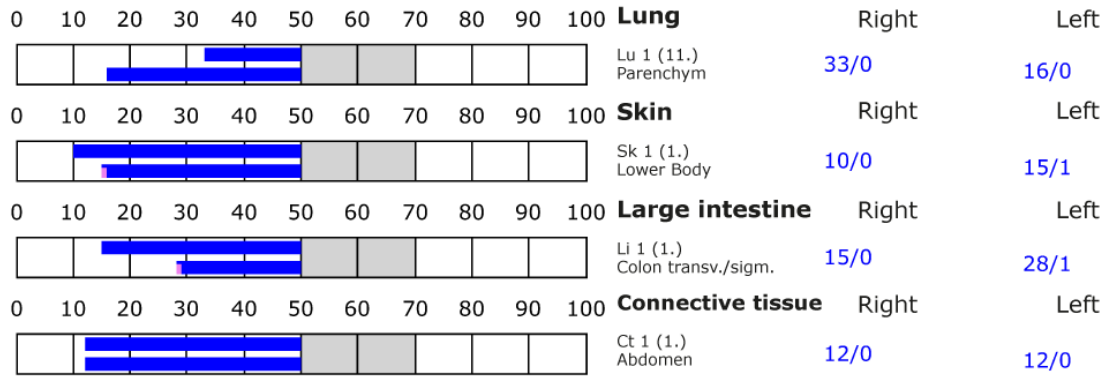
+++ : Indicator decline > 15 Skt.
 ++ : Indicator decline 6-15 Skt.
 + : Indicator decline 3-5 Skt.

T: Total inflammation (>89 Skt.)
 P: Partial inflammation (70-89 Skt.)

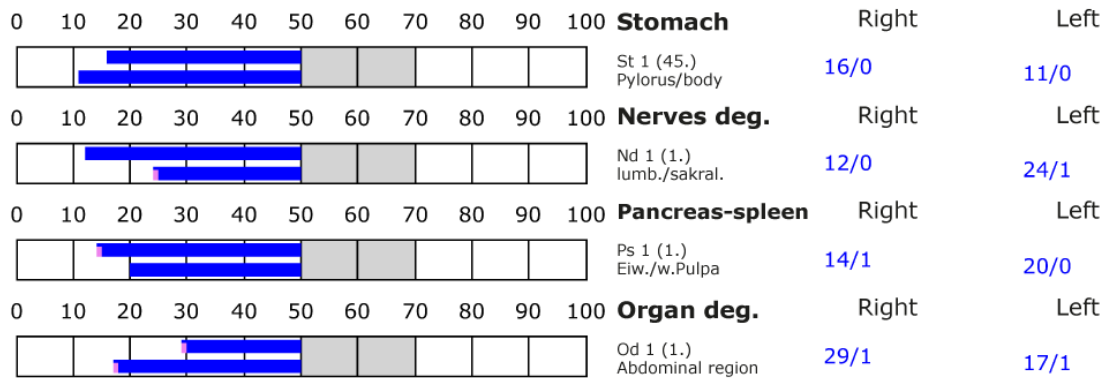
D: Degeneration (< 50 Skt.)

Standard values: (50-70 Skt.)

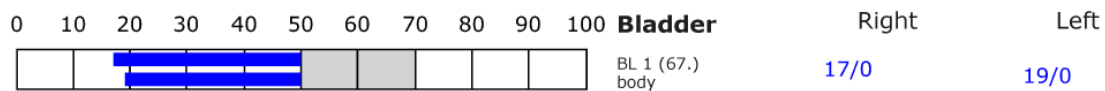
Element: lu - sk - li - ct



Element: st - nd - ps - od



Element: bl - ly - ki - al





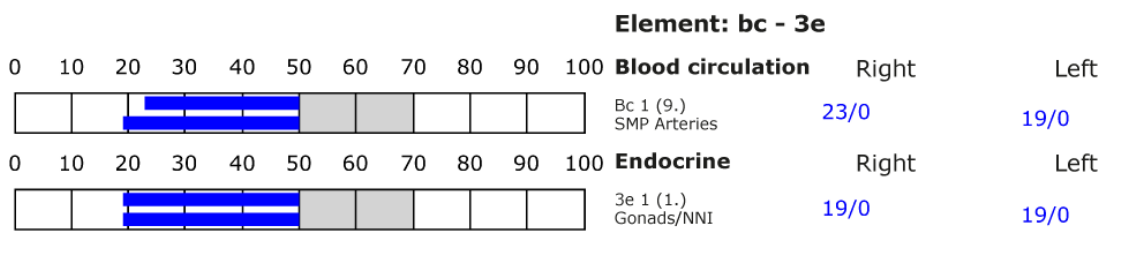
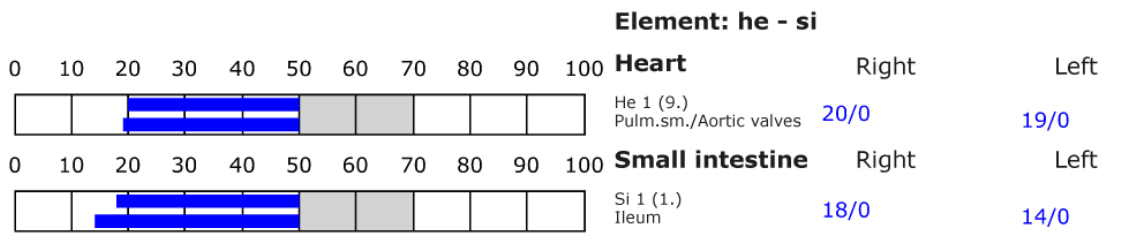
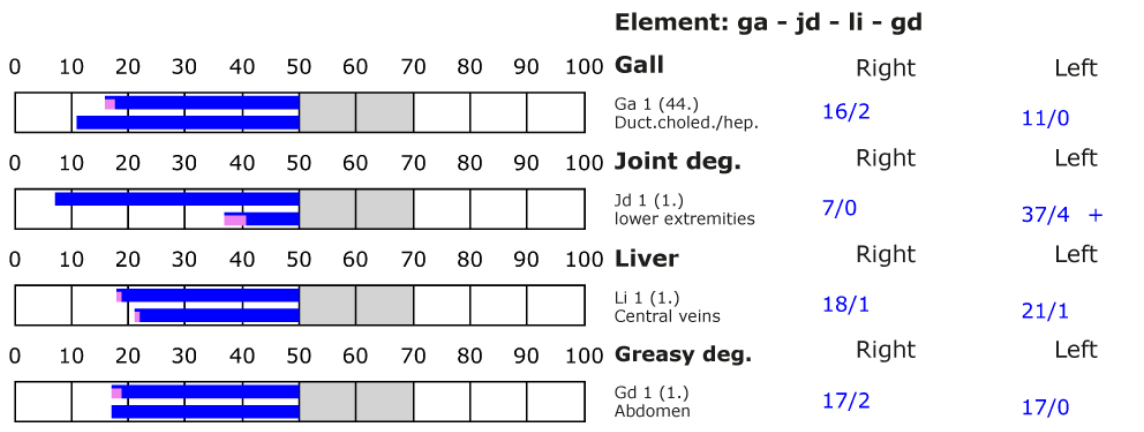
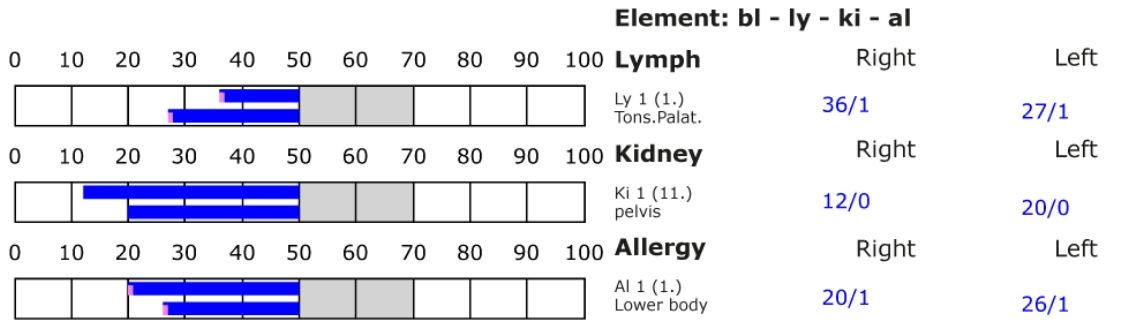
BESA basic test

+++ : Indicator decline > 15 Skt.
 ++ : Indicator decline 6-15 Skt.
 + : Indicator decline 3-5 Skt.

T: Total inflammation (>89 Skt.)
 P: Partial inflammation (70-89 Skt.)

D: Degeneration (< 50 Skt.)

Standard values: (50-70 Skt.)





BESA 2 Testing BEFORE

BESA 2 Testing BEFORE; with the EMSF leading objects of mobile phones

In the further BESA test course, the subject was associated with the EMSF leading object of an activated and unprotected cell phone. All BESA tests were again performed at the TING points (40 nail fold points on the fingers and toes) as in the BESA 1 test BASIC.

Objective: to determine the response of the subject's meridian system within the influence of an EMSF carrying object of the cell phone. Determination of the differences compared to the BESA 1 test BASIC BEFORE.

BESA-Test evaluation P74 2.0
from **05-11-2021 at 11:04 to 11:13** (9 minutes) page 14 and 15

Result: The measurement result shows a strong energetic collapse of the measured values at the meridian end points or at the energetic system of the test person.

92 % in the blue area

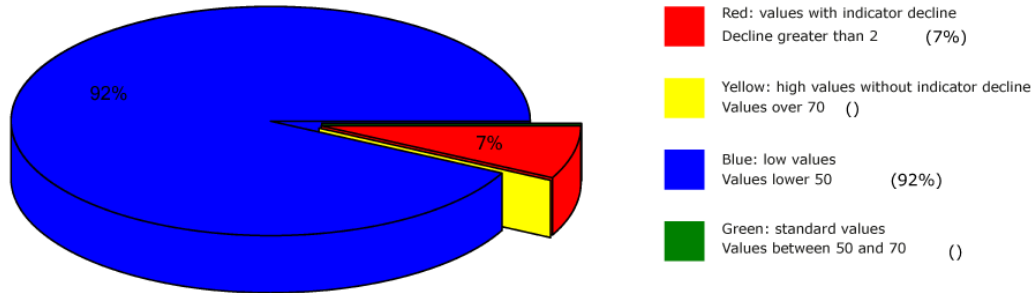
7 % in the red area

1 % in the yellow transition area

Conclusion: As the graphs show, after activating the EMSF leading objects of the cell phone into the measuring circuit of the test person, many measuring points are still in the degenerative, blue area (lack of energy). But the truth is that all the measured values continued to deteriorate. The blue bars in the graphs confirm the collapse of the energetic potentials on the subject in the direction of 10 sct. (scale parts) or even lower. The influence by the application of the activated cell phone shows a significant increase of certain measured values in the red area. Again, the red readings represent the total deregulation of these energy- circuits. This means that after confrontation with the activated cell phone, the energy system of the organism in the test person triggers a high degenerative crisis (high, pathological energy deficiency). In case of permanent influences of such or similar interference fields, the energy system of the test person would suffer severe damage. For a balancing of these red readings or, in other words, for a harmonization of the values, the energy system needs either the exit from the area of the tested fields or a very strong positive impulse from outside (harmonizing influence from the environment). The comparisons of the BESA graphs confirm the stressing influences by the vaccine on the test person.



Overview of BESA measuring



BESA basic test

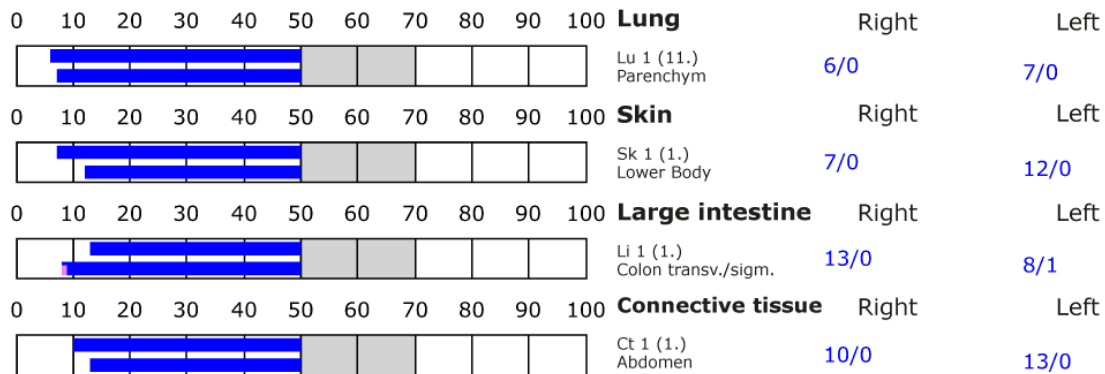
+++ : Indicator decline > 15 Skt.
 ++ : Indicator decline 6-15 Skt.
 + : Indicator decline 3-5 Skt.

T: Total inflammation (>89 Skt.)
 P: Partial inflammation (70-89 Skt.)

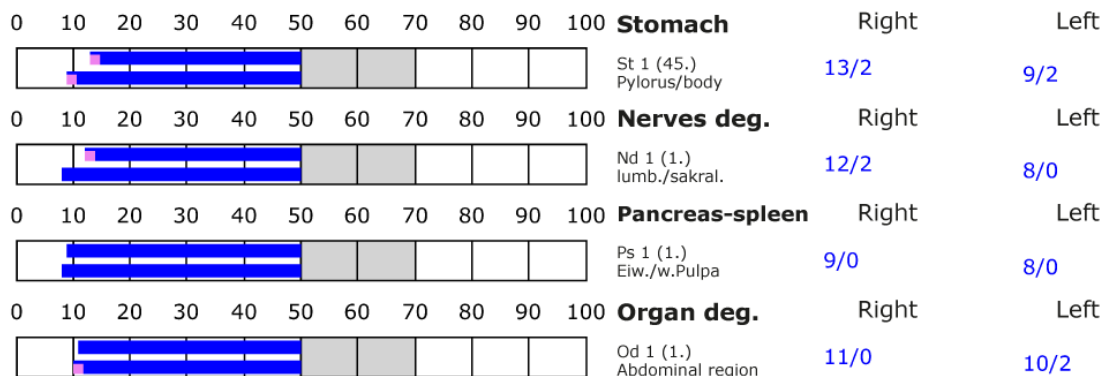
D: Degeneration (< 50 Skt.)

Standard values: (50-70 Skt.)

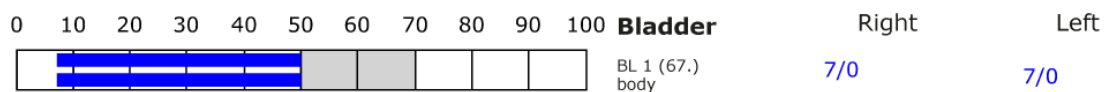
Element: lu - sk - li - ct



Element: st - nd - ps - od



Element: bl - ly - ki - al





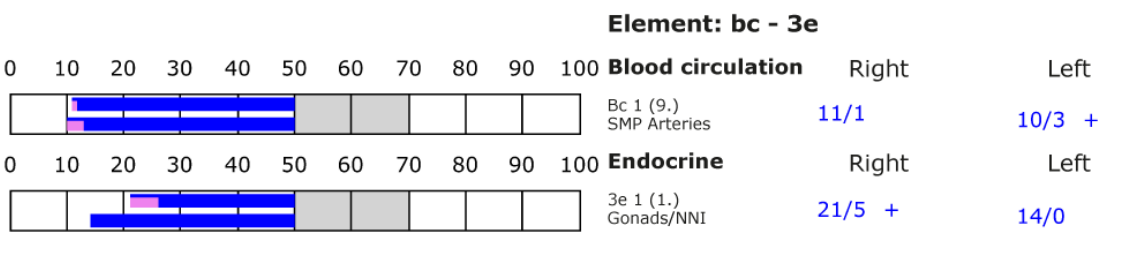
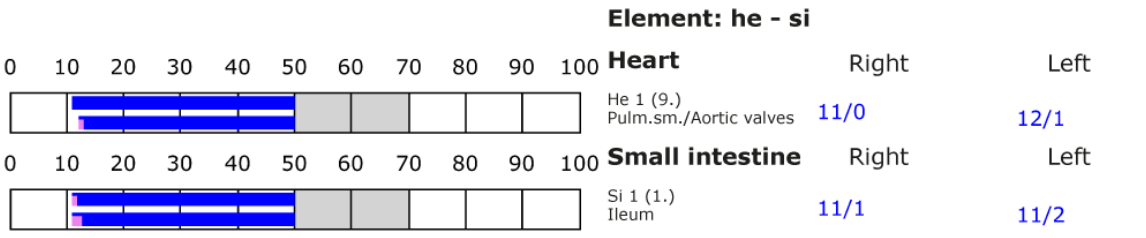
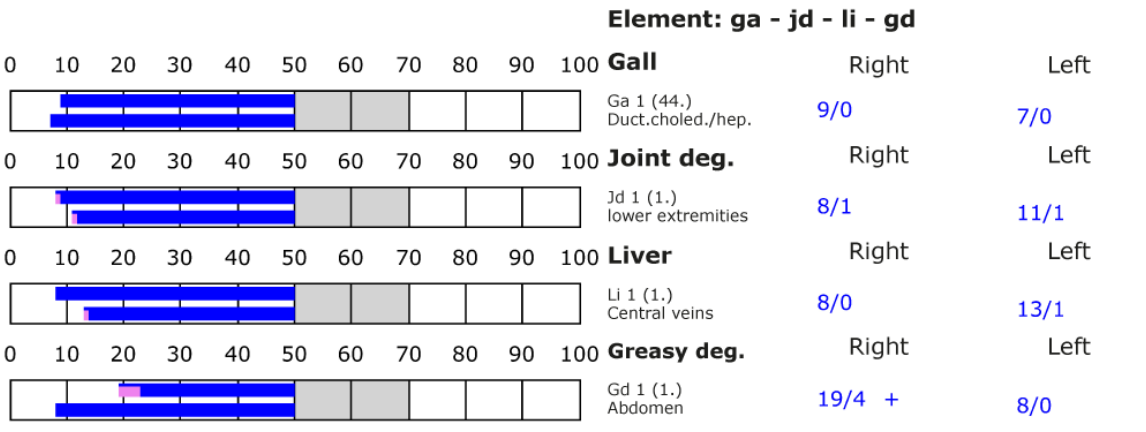
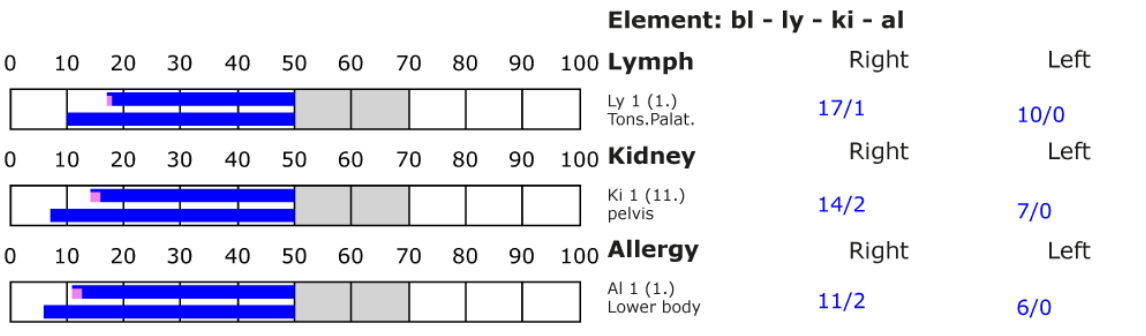
BESA basic test

+++ : Indicator decline > 15 Skt.
 ++ : Indicator decline 6-15 Skt.
 + : Indicator decline 3-5 Skt.

T: Total inflammation (>89 Skt.)
 P: Partial inflammation (70-89 Skt.)

D: Degeneration (< 50 Skt.)

Standard values: (50-70 Skt.)





BESA 3 Testing AFTER

BESA 3 test AFTER; EMSF leading object of the cell phone in connection with the „Leela Quantum DNA & Cell Protector Card“.

In the further BESA test course, the subject was associated with both the EMSF leading object of an activated and unprotected cell phone and the test object, the "Leela Quantum DNA & Cell Protector Card". All BESA tests were again performed at the TING points (40 nail fold points on the fingers and toes) as in the BESA 1 test BASIC.

Objective: To determine the response of the subject's meridian system within the strong influence of an activated and unprotected cell phone in correlation with the test object. To determine the differences of BESA 3 testing AFTER compared to BESA 1 + 2 testing BEFORE.

BESA-Test evaluation P74 2.0
from **05-11-2021 at 11:14 to 11:20** (6 minutes) page 17 and 18

Result: The measurement result shows significant improvements in the meridian end points or in the energetic state of the test subject.

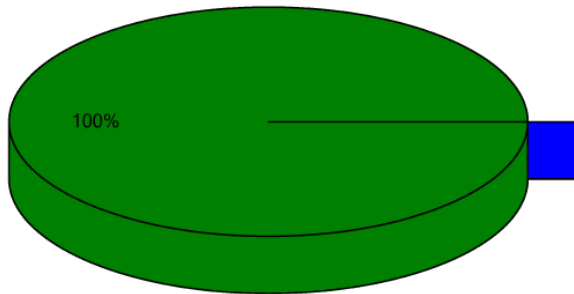
100 % in the green area

Conclusion: As the graphs show, 2 minutes after inserting the "Leela Quantum DNA & Cell Protector Card" into the measuring circuit, all measuring points are in the green, optimal and harmonized range (balanced energy system). The BESA test results in a significant improvement of the energy situation in the meridian system of the test person compared to the BESA 1+2 tests BEFORE. It is shown that the "Leela Quantum DNA & Cell Protector Card" is able in a very short time to give the severely degenerative blue and the red readings (total deregulation) detected in the BESA 1+2 testing BEFORE a necessary impulse for harmonization (neutralization) into the life-promoting range. The comparisons of the BESA graphs confirm the change and resolution of the stressed (blue and red) acupuncture points on the meridian system of the subject.

This first detailed project shows that the test object, the "Leela Quantum DNA & Cell Protector Card" is basically able and suitable to create a harmonization at the cell membrane, as well as to protect the deeper structures of the cell up to the DNA from the effects of the ingredients of the vaccination. Especially the effects of the mentioned vaccines towards the DNA will be the task of further detailed projects.



Overview of BESA measuring



- Red: values with indicator decline
Decline greater than 2 ()
- Yellow: high values without indicator decline
Values over 70 ()
- Blue: low values
Values lower 50 ()
- Green: standard values
Values between 50 and 70 (100%)

BESA basic test

- +++ : Indicator decline > 15 Skt.
- ++ : Indicator decline 6-15 Skt.
- + : Indicator decline 3-5 Skt.

- T: Total inflammation (>89 Skt.)
- P: Partial inflammation (70-89 Skt.)

D: Degeneration (< 50 Skt.)

Standard values: (50-70 Skt.)

Element: lu - sk - li - ct

0	10	20	30	40	50	60	70	80	90	100	Element	Right	Left
											Lung		
											Lu 1 (1.) Parenchym	52/0	50/1
											Skin		
											Sk 1 (1.) Lower Body	54/0	57/0
											Large intestine		
											Li 1 (1.) Colon transv./sigm.	51/0	50/0
											Connective tissue		
											Ct 1 (1.) Abdomen	54/0	56/1

Element: st - nd - ps - od

0	10	20	30	40	50	60	70	80	90	100	Element	Right	Left
											Stomach		
											St 1 (45.) Pylorus/body	52/0	51/1
											Nerves deg.		
											Nd 1 (1.) lumb./sakral.	53/1	50/0
											Pancreas-spleen		
											Ps 1 (1.) Eiw./w.Pulpa	52/1	51/0
											Organ deg.		
											Od 1 (1.) Abdominal region	53/0	51/1

Element: bl - ly - ki - al

0	10	20	30	40	50	60	70	80	90	100	Element	Right	Left
											Bladder		
											BL 1 (67.) body	51/0	52/1



BESA basic test

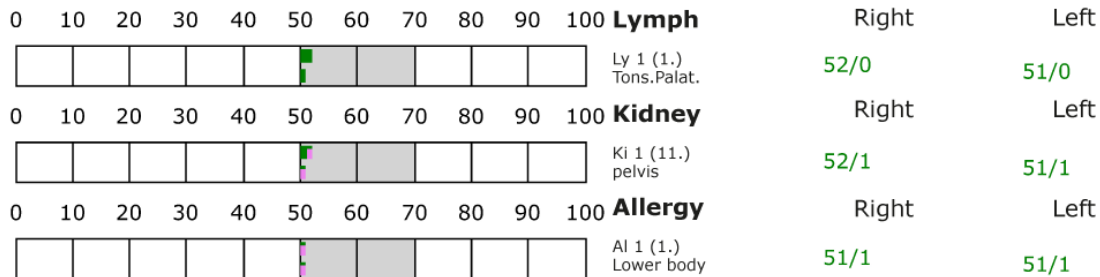
+++ : Indicator decline > 15 Skt.
 ++ : Indicator decline 6-15 Skt.
 + : Indicator decline 3-5 Skt.

T: Total inflammation (>89 Skt.)
 P: Partial inflammation (70-89 Skt.)

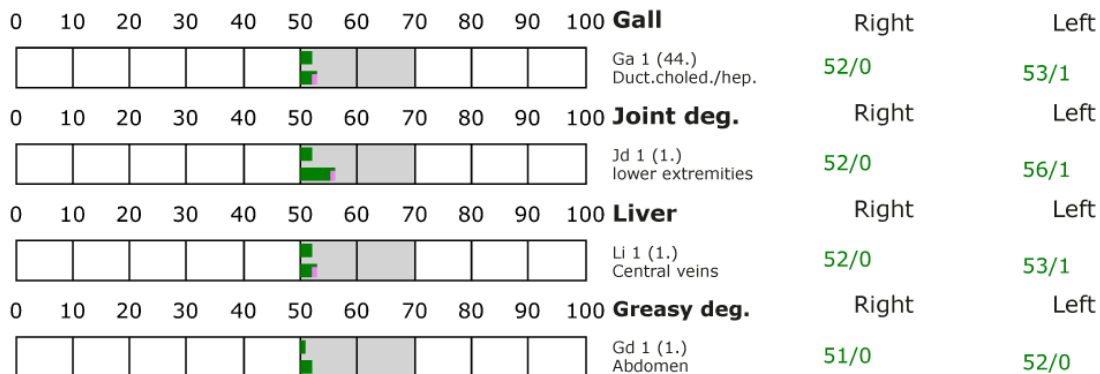
D: Degeneration (< 50 Skt.)

Standard values: (50-70 Skt.)

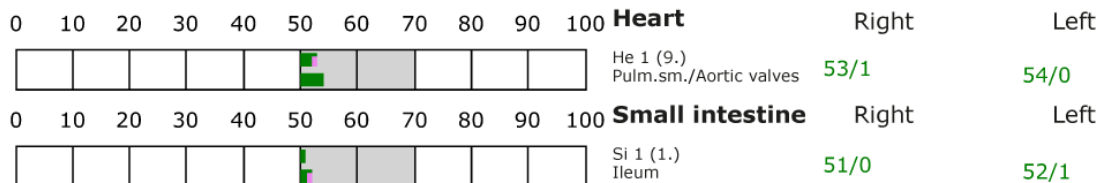
Element: bl - ly - ki - al



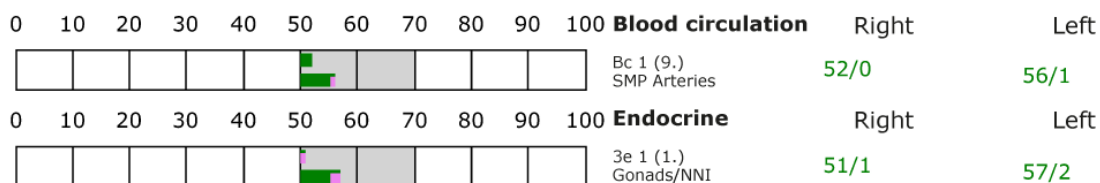
Element: ga - jd - li - gd



Element: he - si



Element: bc - 3e





Respondent 2

BESA 1 Testing BASIC BEFORE

BESA 1 Test BASIC BEFORE as status

Eva Krankl performed a basic BESA measurement on the subject. All BESA tests were performed at the TING points (40 nail fold points on the fingers and toes).

Objective: The creation of a basic test (status) for the representation of the energetic initial situation for all further BESA tests..

BESA-Test evaluation P74 2.0

from **05-11-2021 at 11:27 to 11:36** (9 minutes) page 20 and 21

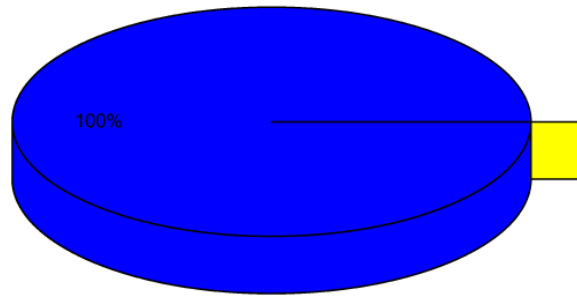
Result: The measurement result indicated energetic stresses at the meridian end points and subsequently on the subordinate metabolic situation of the test person.

100 % in the blue area

Conclusion: As the graphs show, all measurement points are in the degenerative blue range (energy deficiency). Considering the health situation, the test person's energetic system shows surprisingly moderate measured values. Only a few measured values lie deep in the degenerative range (values around 10 sct or below). The comparisons of the BESA graphs confirm the stressful influences on the proband.



Overview of BESA measuring



- Red: values with indicator decline
Decline greater than 2 ()
- Yellow: high values without indicator decline
Values over 70 ()
- Blue: low values
Values lower 50 (100%)
- Green: standard values
Values between 50 and 70 ()

BESA basic test

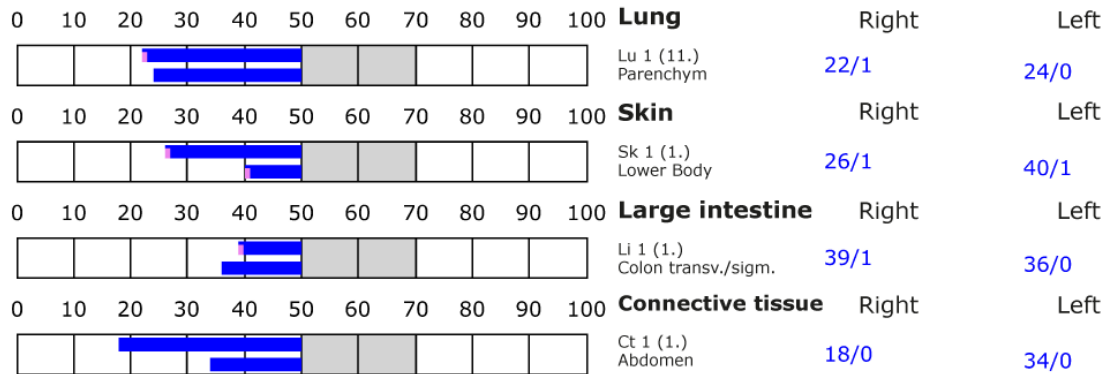
- +++ : Indicator decline > 15 Skt.
- ++ : Indicator decline 6-15 Skt.
- + : Indicator decline 3-5 Skt.

T: Total inflammation (>89 Skt.)
 P: Partial inflammation (70-89 Skt.)

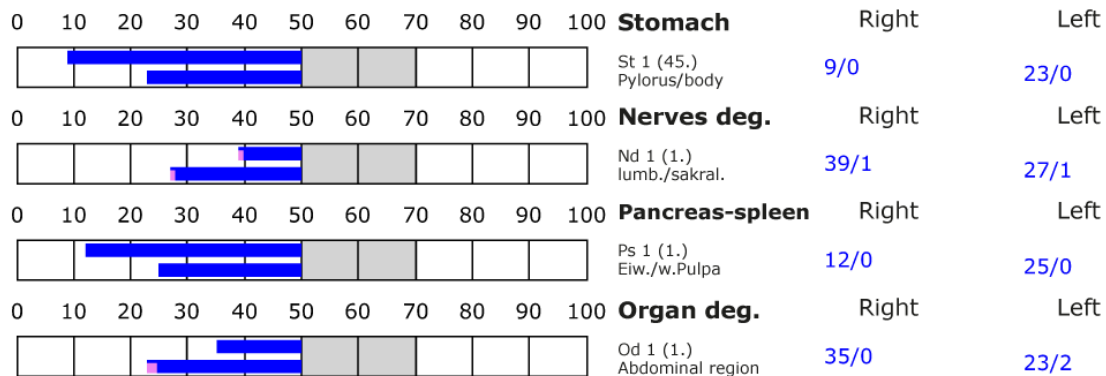
D: Degeneration (< 50 Skt.)

Standard values: (50-70 Skt.)

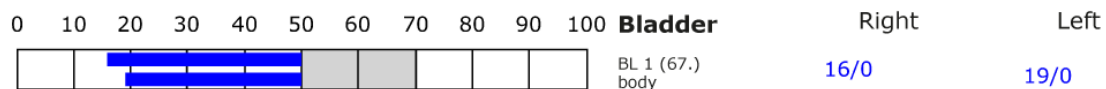
Element: lu - sk - li - ct



Element: st - nd - ps - od



Element: bl - ly - ki - al





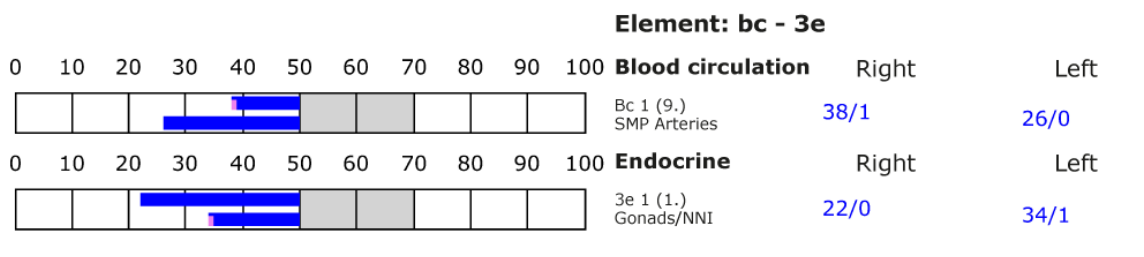
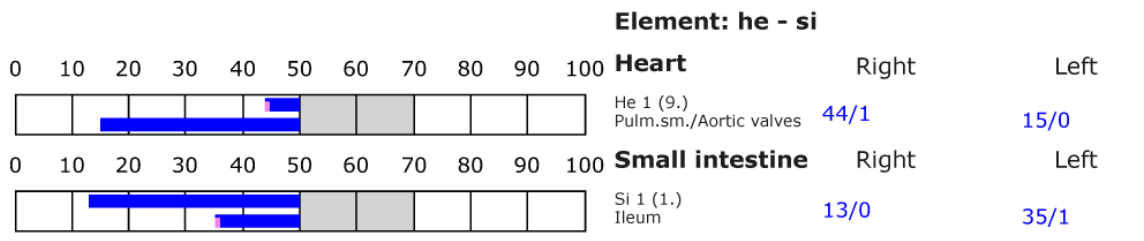
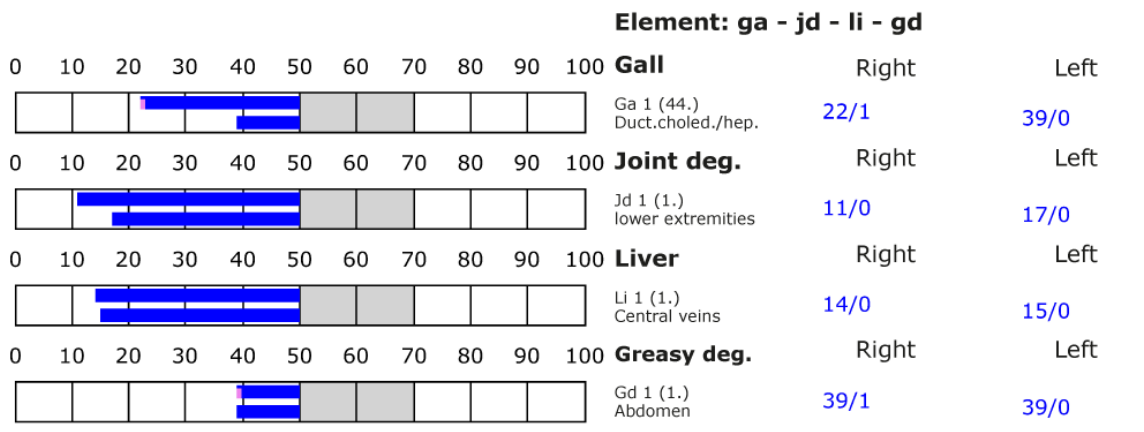
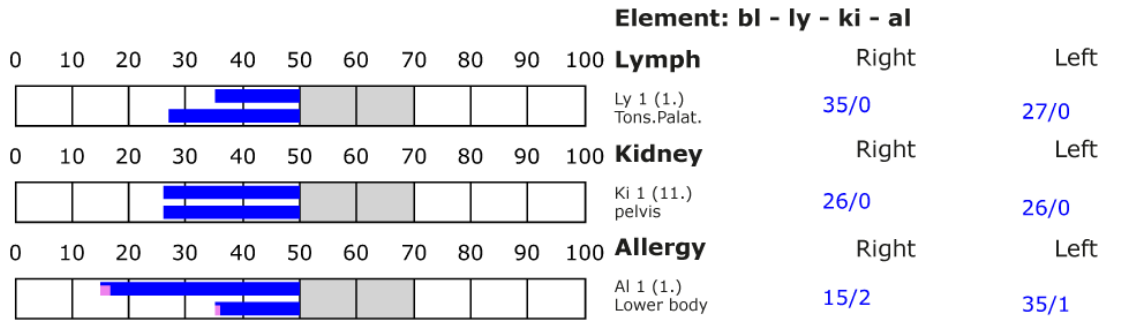
BESA basic test

+++ : Indicator decline > 15 Skt.
 ++ : Indicator decline 6-15 Skt.
 + : Indicator decline 3-5 Skt.

T: Total inflammation (>89 Skt.)
 P: Partial inflammation (70-89 Skt.)

D: Degeneration (< 50 Skt.)

Standard values: (50-70 Skt.)





BESA 2 Testing BEFORE

BESA 2 Test BEFORE; with EMSF leading objects of the mobile phones

In the further BESA test course, the subject was associated with the EMSF leading object of an activated and unprotected cell phone. All BESA tests were again performed at the TING points (40 nail fold points on the fingers and toes) as in the BESA 1 test BASIC.

Objective: To determine the response of the subject's meridian system within the influence of an activated cell phone. Determination of the differences compared to the BESA 1 test BASIC BEFORE.

BESA-Test evaluation P74 2.0
from **05-11-2021 at 11:43 to 11:53** (10 minutes) page 23 and 24

Result: The measurement result shows a very massive energetic collapse of the measured values at the meridian end points or at the energetic system of the test person.

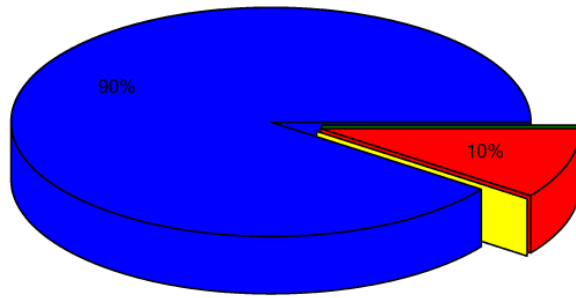
90 % in the blue area

10 % in the red area

Conclusion: As the graphics show, after activation of the EMSF leading object (cell phone) into the measuring circuit of the test person, many measuring points are still in the degenerative, blue area (lack of energy). But the truth is that all measured values continued to deteriorate. The blue bars in the graphs confirm the massive collapse of the energetic potentials on the proband in the direction of 10 sct. (scale parts) or even lower. The influence by the application of the activated cell phone shows a significant increase of certain measured values in the red area. Again, the red readings represent the total deregulation of these energy- circuits. This means that after confrontation with the activated cell phone, the energy system of the organism in the test person triggers a high degenerative crisis (high, pathological energy deficiency). In case of permanent influences of such or similar interference fields, the energy system of the test person would suffer severe damage. For a balancing of these red readings or in other words: for a harmonization of the values the energy system needs either the exit from the area of the tested fields or a very strong positive impulse from outside (harmonizing influence from the environment). The comparisons of the BESA graphs confirm the stressing influences by the vaccine on the test person.



Overview of BESA measuring



- Red: values with indicator decline
Decline greater than 2 (10%)
- Yellow: high values without indicator decline
Values over 70 ()
- Blue: low values
Values lower 50 (90%)
- Green: standard values
Values between 50 and 70 ()

BESA basic test

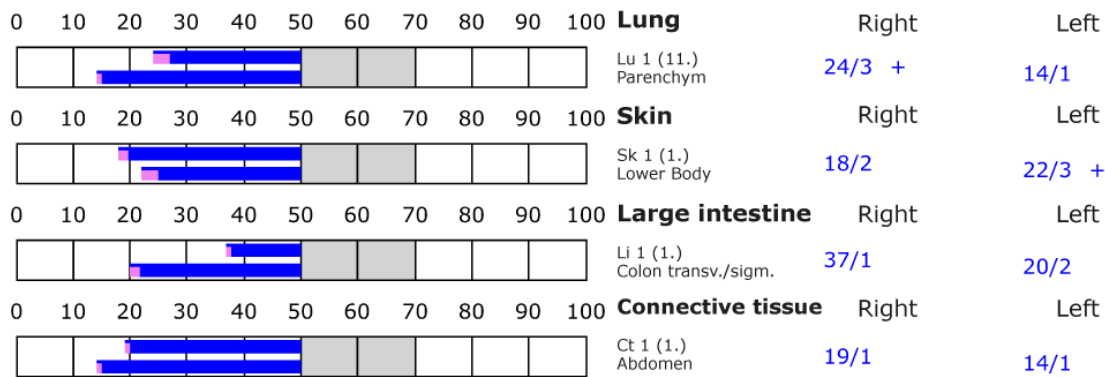
+++ : Indicator decline > 15 Skt.
 ++ : Indicator decline 6-15 Skt.
 + : Indicator decline 3-5 Skt.

T: Total inflammation (>89 Skt.)
 P: Partial inflammation (70-89 Skt.)

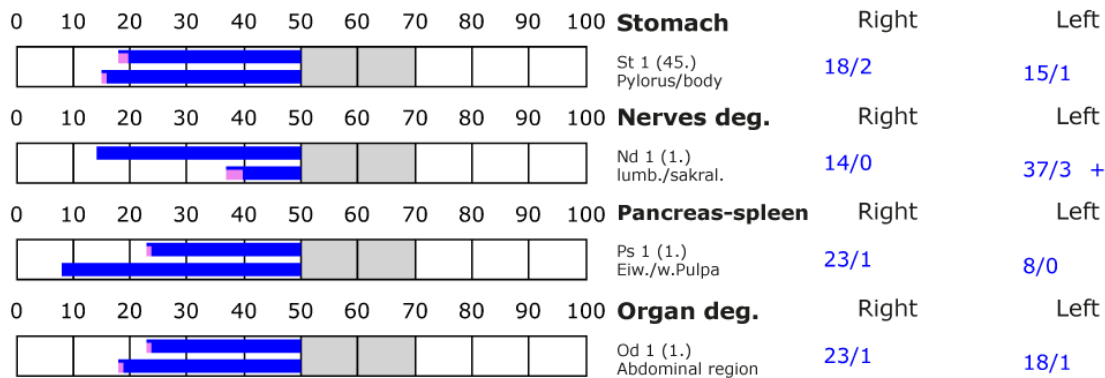
D: Degeneration (< 50 Skt.)

Standard values: (50-70 Skt.)

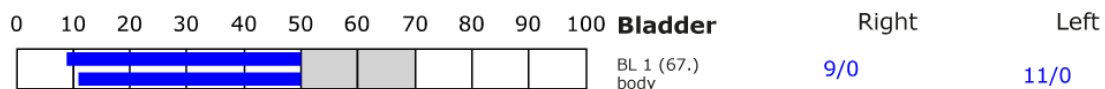
Element: lu - sk - li - ct



Element: st - nd - ps - od



Element: bl - ly - ki - al





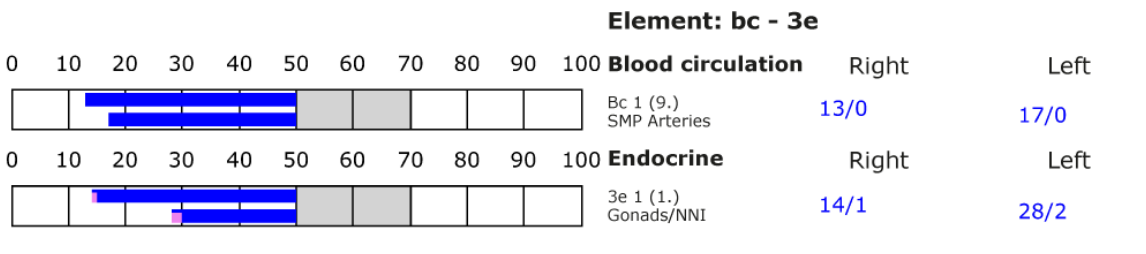
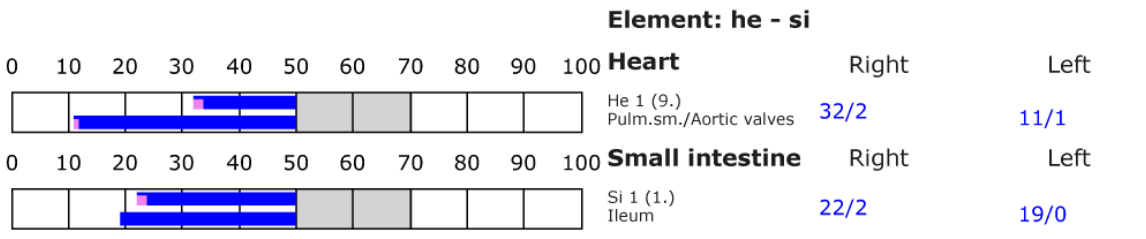
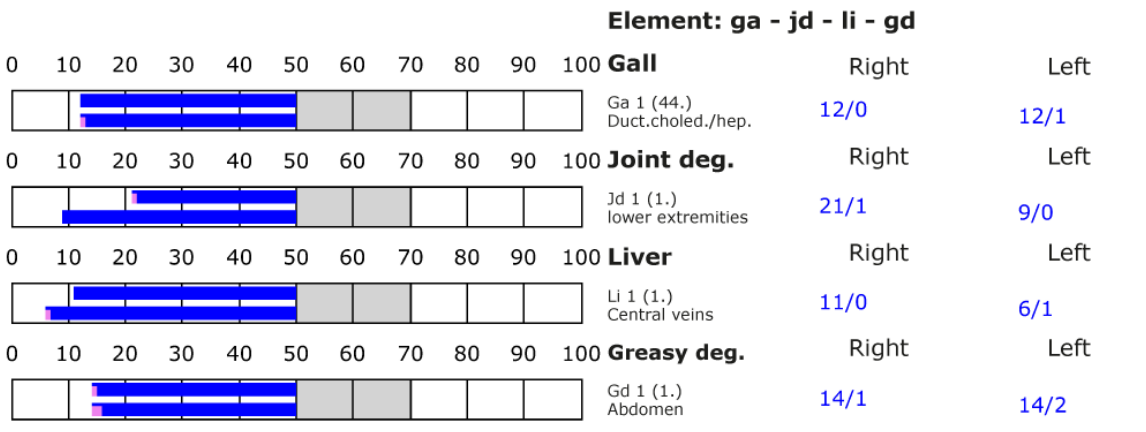
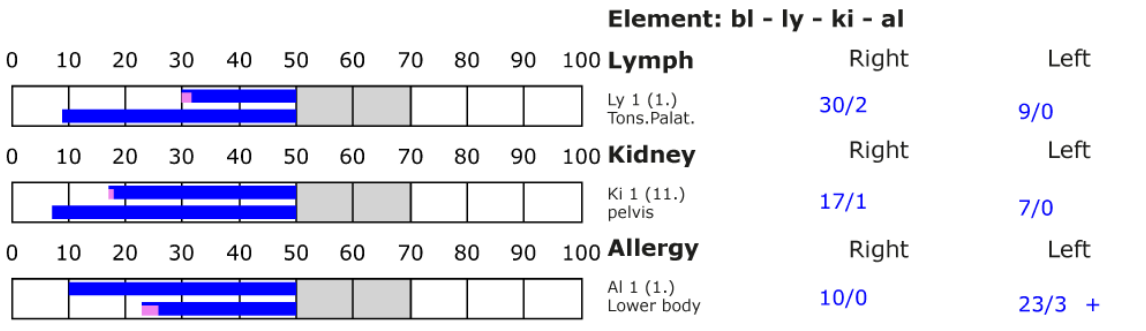
BESA basic test

+++ : Indicator decline > 15 Skt.
 ++ : Indicator decline 6-15 Skt.
 + : Indicator decline 3-5 Skt.

T: Total inflammation (>89 Skt.)
 P: Partial inflammation (70-89 Skt.)

D: Degeneration (< 50 Skt.)

Standard values: (50-70 Skt.)





BESA 3 Testing AFTER

BESA 3 Test AFTER; EMSF leading object of the cell phone in combination with the "Leela Quantum DNA & Cell Protector Card".

In the further course of the BESA test, the subject was associated both with the EMSF-leading object of an activated and unprotected cell phone and with the test object, the "Leela Quantum DNA & Cell Protector Card". All BESA tests were again performed at the TING points (40 nail fold points on the fingers and toes) as in the BESA 1 test BASIC.

Objective: To determine the response of the subject's meridian system within the strong influence of an activated and unprotected cell phone in correlation with the test object. To determine the differences of BESA 3 testing AFTER compared to BESA 1 + 2 testing BEFORE.

BESA-Test evaluation P74 2.0
from **05-11-2021 at 12:05 to 12:10** (5 minuten) page 26 and 27

Result: The measurement result shows significant improvements in the meridian end points or in the energetic state of the test subject.

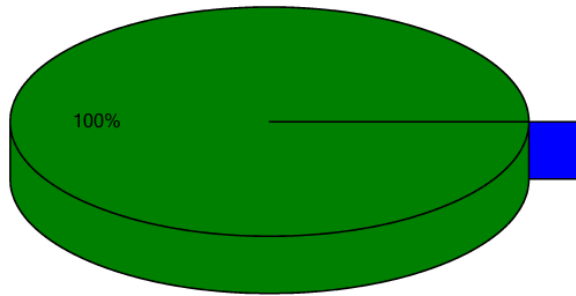
100 % in the green area

Conclusion: As the graphs show, 2 minutes after inserting the "Leela Quantum DNA & Cell Protector Card" into the measuring circuit, all measuring points are in the green, optimal and harmonized range (balanced energy system). The BESA test results in a significant improvement of the energy situation in the meridian system of the test person compared to the BESA 1+2 tests BEFORE. It is shown that the "Leela Quantum DNA & Cell Protector Card" is able in a very short time to give the severely degenerative blue and the red readings (total deregulation) detected in the BESA 1+2 testing BEFORE a necessary impulse for harmonization (neutralization) into the life-promoting range. The comparisons of the BESA graphs confirm the change and resolution of the stressed (blue and red) acupuncture points on the meridian system of the subject.

This first detailed project shows that the test object, the "Leela Quantum DNA & Cell Protector Card" is basically able and suitable to create a harmonization at the cell membrane, as well as to protect the deeper structures of the cell up to the DNA from the effects of the ingredients of the vaccination. Especially the effects of the ment.



Overview of BESA measuring



- Red: values with indicator decline
Decline greater than 2 ()
- Yellow: high values without indicator decline
Values over 70 ()
- Blue: low values
Values lower 50 ()
- Green: standard values
Values between 50 and 70 (100%)

BESA basic test

+++ : Indicator decline > 15 Skt.
 ++ : Indicator decline 6-15 Skt.
 + : Indicator decline 3-5 Skt.

T: Total inflammation (>89 Skt.)
 P: Partial inflammation (70-89 Skt.)

D: Degeneration (< 50 Skt.)

Standard values: (50-70 Skt.)

Element: lu - sk - li - ct

0	10	20	30	40	50	60	70	80	90	100		Right	Left
											Lung		
											Lu 1 (11.) Parenchym	51/0	54/1
											Skin		
											Sk 1 (1.) Lower Body	53/1	56/2
											Large intestine		
											Li 1 (1.) Colon transv./sigm.	51/0	61/0
											Connective tissue		
											Ct 1 (1.) Abdomen	53/0	57/1

Element: st - nd - ps - od

0	10	20	30	40	50	60	70	80	90	100		Right	Left
											Stomach		
											St 1 (45.) Pylorus/body	52/0	58/1
											Nerves deg.		
											Nd 1 (1.) lumb./sakral.	52/1	58/0
											Pancreas-spleen		
											Ps 1 (1.) Eiw./w.Pulpa	52/0	52/1
											Organ deg.		
											Od 1 (1.) Abdominal region	53/0	53/1

Element: bl - ly - ki - al

0	10	20	30	40	50	60	70	80	90	100		Right	Left
											Bladder		
											BL 1 (67.) body	55/1	51/0



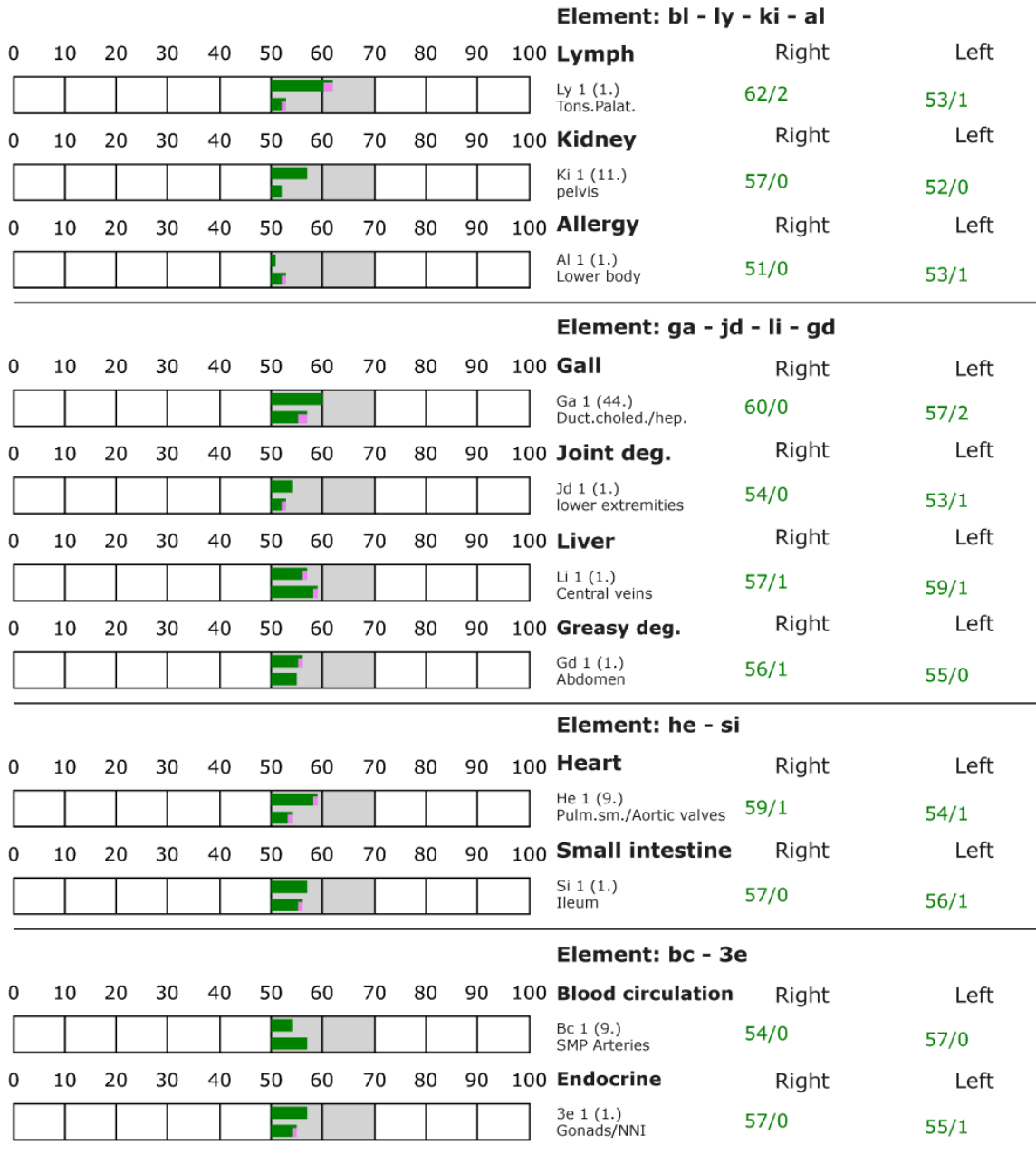
BESA basic test

+++ : Indicator decline > 15 Skt.
 ++ : Indicator decline 6-15 Skt.
 + : Indicator decline 3-5 Skt.

T: Total inflammation (>89 Skt.)
 P: Partial inflammation (70-89 Skt.)

D: Degeneration (< 50 Skt.)

Standard values: (50-70 Skt.)

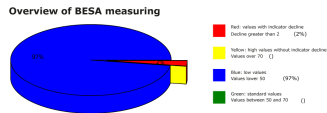




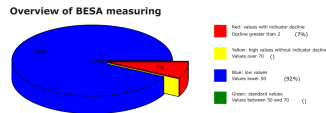
The results of the BESA tests at a glance

Respondent 1

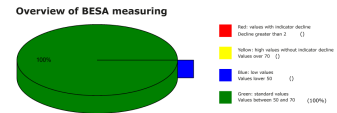
BESA 1 Test BASIC BEFORE as energetic status



BESA 2 Test BEFORE during correlation with an activated cell phone 5G



BESA 3 Test AFTER during correlation with an activated cell phone 5G as well as the "Leela Quantum DNA & Cell Protector Card"

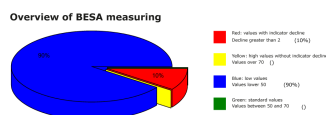


Respondent 2

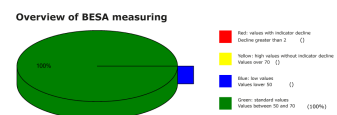
BESA 1 Test BASIC BEFORE as energetic status



BESA 2 Test BEFORE during correlation with an activated cell phone 5G



BESA 3 Test AFTER during correlation with an activated cell phone 5G as well as the "Leela Quantum DNA & Cell Protector Card"





General information about the test result

Man represents a kind of receiving antenna for environmental information. This is because human life depends fundamentally and exclusively on environmental information. Our organism is biologically very sensitive where natural information (fields) are located or where this natural information is subject to interactions and fluctuations. The situation is all the more dangerous when such field-building structures are introduced (injected) into the body as nanoparticles via a so-called mRNA vaccine. **For this reason, detected informative electromagnetic interference fields are biologically highly relevant. Any reduction or transformation of these interference fields (ideally to 100 percent) is biologically very important, in the case of these tested vaccines even life-critical.** These information loads from the vaccine as well as from our artificial environment are only compatible with life if they can be readjusted to a natural fluctuation tolerance. Disturbances, problems, blockades, disharmonies in the biological control circuit of man find their causes in such disturbing electromagnetic information influences.

Neutralizing or harmonizing effects could be proven in this project P74 2.0 to determine the effect of the test object, the "Leela Quantum DNA & Cell Protector Card". The "Leela Quantum DNA & Cell Protector Card" was able to neutralize the biologically adverse effects and effects of the stress factors tested on the test subject.

The modulation of many ingredients in the Corona mRNA and vector-based vaccines has created an entirely new situation and challenge for the human immune system. It will occupy the prevailing science for decades to come to find solutions to the resulting questions. Many solutions and answers already exist. They offer an important approach in understanding what is going on at the human level right now.

But the biggest challenge is facing those people who already have pre-existing health conditions and are taking medication. This is because no one can imagine what (side) effects these drugs will cause when combined with mRNA and/or vector-based vaccines. Many question marks have already arisen within this detailed project. It will take many more projects to resolve them.

But crucial for this detail project is the decisive ability of the test object, the "Leela Quantum DNA & Cell Protector Card" to neutralize and harmonize the stress factors tested in this project P74 2.0 and their transformation into biological life promoting goodness is proven with this project.



Authorized summary

The BESA tests carried out by IFVBESA on the energetic and physical effectiveness of the test object, the "Leela Quantum DNA & Cell Protector Card" have clearly shown that this test object is able to neutralize or harmonize biologically significant stress factors as well as these in correlation with EMSF from a 5G cell phone at the acupuncture points of the test person. Via the bioenergy-informative system analysis, the effect of the above-mentioned stress factors on the test persons, their meridian system and their energetic-biological control circuits was questioned and systemically tested on the energy-informative level. The BESA tests BEFORE - AFTER show significant changes at the tested acupuncture points on the meridian system of the test person. The measurement data as well as their key figures impressively confirm on the one hand the stresses that the tested factors cause on the human organism, and on the other hand clarify how the deregulating energies are transformed into body-immanent and biocompatible energies after application of the test object "Leela Quantum DNA & Cell Protector Card".

From a holistic point of view, it can be assumed that the positive effect on the test subjects also occurs in other people. That the positive influence by the "Leela Quantum DNA & Cell Protector Card" is actually possible with high precision is clearly shown by this test through the BESA-PRE-AFTER-AFTER comparison. All measured values improved significantly from the mostly 100-percent blue measuring range to the green mostly 50-second range (scale value), i.e. the range of optimal measured values. This means that an optimal regulation dynamic has taken place. Here, in the sense of IFVBESA, one can clearly speak of an optimal, significant improvement of the body's own energy situation.

Result

The Corona mRNA inoculated test subjects were each brought into contact with heavily loaded, special EMSF of an activated cell phone during the BESA-NACHHER test. In contrast to the BESA BEFORE tests, in which the test object "Leela Quantum DNA & Cell Protector Card" was not used, consistently positive measurement results were found, indicating that neutralization or harmonization had taken place. The regulatory dynamics developed into an optimal effective range.

By demonstrating the energy informative effectiveness of the test object, the "Leela Quantum DNA & Cell Protector Card" in this project P74 2.0, the requirements for obtaining a BESA seal of approval by the International Professional Association for BESA were met.