



# IFVBESA

Information is crucial

P73 3.0 BESA-Detailproject  
Cytotoxicity  
Leela Quantum Jacket



Internationaler Fachverband für BESA | ZVR Nr. 975047937  
Hauptstraße 1, A 4861 Kammer-Schörfing am Attersee | Österreich - Austria  
Tel.: +43 – 664 – 73152899 | E-Mail: [info@ifvbesa.at](mailto:info@ifvbesa.at)

## **Project P73 3.0 to BESA expert opinion**

bioenergetic System analysis  
within the framework of the BESA seal of approval on the effectiveness  
of the product „Leela Quantum Jacket“  
for Cytotoxicity  
also referred to as "test object" in the project.



Internationaler Fachverband für BESA | ZVR Nr. 975047937  
Hauptstraße 1, A 4861 Kammer-Schörfling am Attersee | Österreich - Austria  
Tel.: +43 – 664 – 73152899 | E-Mail: [info@ifvbesa.at](mailto:info@ifvbesa.at)

## **Client**

Firma Leela Quantum Tech, LLC  
Attn: Eleonora Goldenberg  
1421 LUISA STREET, STE G  
SANTA FEE, NM 87505  
USA

## **Project participants:**

**Project leader:** Wolfgang Hans Albrecht, präsident and scientific director of the IFVBESA

**Test person:** Eva Krankl, Vicepräsident and deputy scientific director of the IFVBESA

**Respondent:** 8 anonymous subject in the (Detail) Projects P73 1.0, P73 2.0, P73 3.0 and P73 4.0.

These break down as follows:

- 2 Respondent at P73 1.0 - EMSF
- 2 Respondent at P73 2.0 - for environmental impact
- **2 Respondent at P73 3.0 – for cytokines as inflammatory factors**
- 2 Respondents at P73 4.0 - for hypoglycemia, nitrostress and oxidative stress

**other participants:** none

## **Project location:**

Location of the IFVBESA, Hauptstraße 1, A 4861 Kammer/Schörfling

**Date:** 04.01.2020 until 12.02.2021

**Project duration:** 39 Days



## Contents

BESA- legende <b>for the interpretation of the BESA measurement results</b> .....	5
Basics of the research project creation P73 .....	6
Research funding services of the IFVBESA - BESA- reference tests .....	6
Research project description (detailed project) .....	7
Test procedure .....	9
<b>All BESA tests at a glance</b> .....	34
General information about the test result .....	35
Autorized Summary .....	35

### Important notes:

The client owns the right to exploit this project report. Irrespective of this, this report represents intellectual property of IFVBESA as the contractor. The contractor is entitled to use this project report for other purposes if this does not violate the client's data protection or confidentiality. On the other hand, the project report, with the exception of the "authorized abridged version", may not be changed or passed on in abridged form without the consent of the IFVBESA. The order for this project refers to bioenergetically measurable values and their interpretation according to the guidelines of BESA or the IFVBESA. The maintenance of the quality of the tested products as well as their regular control is the task and responsibility of the client. Investigation of the manufacture, mechanism of action or interpretations of the Client's products to third parties is not the responsibility or task of the Contractor. Video recordings may be made only with the permission of IFVBESA.



## BESA- legende for the interpretation of the BESA measurement results

The measured value of 50 on the tested meridian represents an optimal energetic state in this organ or its subordinate and superordinate levels. Also measured values in the range of 50 to max. 70 still count as a neutral and balanced energy status. The organism is able to regulate irritations of the system (wrong environmental signals) very well.

Measured values above 70 to 100 represent the inflammatory range or a so-called energy surplus as a reaction to the irritations of the system by corresponding environmental signals. After reaching the maximum values, the energy state tips into the degenerative (blue) range.

Measured values from below 50 to around 0 represent the so-called degenerative measuring range or a lack of energy as a reaction to the stimulation of the system by corresponding environmental signals.

Measured values represented by a so-called pointer drop of more than 3 scale lines indicate total deregulation. The influence of certain environmental signals then leads to such strong system overloads, which can only be brought into harmonization by corresponding new signals.

### BESA key figures:

<b>up to 0,79</b>	very deep energetic regulatory disorder (SSD) energy deficiency
<b>0,8 to 1,19</b>	strong energetic regulation disturbance (SD) degeneration/energy deficiency
<b>1,2 to 1,59</b>	energetic regulation disorder (D) degeneration/energy deficiency
<b>1,6 to 1,99</b>	degenerative transition area (DÜ)
<b>2,0 to 2,39</b>	optimal regulation (OR)
<b>2,4 to 2,79</b>	in the regulation (R)
<b>2,8 to 3,19</b>	partial inflammation = regional energy excess (PE)
<b>from 3,2</b>	total inflammation = strong general energy surplus (TE)



## Basics of the research project creation P73

The international professional association for bioenergetic system analysis was commissioned by the company Leela Quantum Tech LLC to test or prove the effect of the test object "Leela Quantum Jacket" by means of bioenergetic system analysis (BESA). The testing took place independently of the subjective feeling of all test persons.

### **Description of the "Leela Quantum Bloc" by the client:**

The "Leela Quantum Jacket" works:

1. through the silver in the material (high percentage of silver fibers).
  - It is proven to block over 99 % of electromagnetic radiation
  - It is over 99.5 % antibacterial, antiviral, antimicrobial and antifungal. This means that bacteria, viruses, etc. - once they come into contact with the Quantum T-shirt, cannot survive there.
  - By just mentioned function, the "Leela Quantum Jacket" reduces and eliminates odors (sweaty T-shirt, etc.).
2. due to the quantum energy injected in the whole material, especially in the silver, the wearer also has the following advantages
  - more energy
  - harmonization of electrosmog also related to the whole body
  - positive effect on organ functions
  - etc.

By wearing the "Leela Quantum Jacket" the quantum energy can be made available to the human body and thus to the energy system in a quasi bioavailable way.

## Research funding services of the IFVBESA - BESA- reference tests

General information about this project:

Although the "Leela Quantum Jacket" is primarily worn outdoors, it was important to the developer in the first step to question what effect this jacket has on the energetic system of the test person. For this reason, the effect of the jacket was tested at the beginning of this project in the laboratory of the IFVBESA. During the BESA testing, the typical EMSF of a state-of-the-art office were active. These were WLAN, smart meter, computers and monitors, and smart phone.

**Detailed project P73 3.0** was concerned with demonstrating the effectiveness of the "Leela Quantum Jacket" against certain cytotoxicity. In cell biology, the importance of cytokines is



constantly increasing. Cytokines are proteins that regulate the growth and differentiation of cells. Furthermore, they initiate or regulate proliferation and differentiation of target cells. Others are considered growth factors. The cytokines selected in this project play an important role in immunological reactions or in inflammatory processes (so-called flu factors). In this case, these are furins (furins), inflammasomes and viroporins (viroporins) which play a role especially in the lung and respiratory tract.

The previously listed stress factors are presented via digital test ampoules. EMSFs include: WLAN, Smartmeter, monitors as well as a connecting cell phone. For this project, 2 subjects were selected.

The "Leela Quantum Jacket" was tested according to the requirements of the client within the framework of the applicable conditions of the IFVBESA for the award of quality seals. Depending on the significance of the test results, seals of approval are awarded in 3 categories, taking into account all tests of a project.

The client and developer of the "Leela Quantum Jacket" assumes that it is capable of neutralizing the deregulations presented by the EMSF on the test subjects and replacing the associated negative states with positive states. Whether the "Leela Quantum Jacket" is able to do this is to be questioned in the following commissioned BESA tests on the test subjects.

#### To the general information of the information transfer:

The information transfer takes place from the hyperspace of the test object to the hyperspace of biological objects (humans, animals, plants). From there, the information reaches the reference space or the energy space via so-called interaction channels. This is a union of, among other things, all organs and energy forms in the biological object. There, the information of the program can dynamically materialize and thus change current states. The changes can appear in the form of neutralization or harmonization of disturbances, dissolution of problems, blockages and disharmonies.

## Research project description (detailed project)

The reason for the tests is to prove the functionality of the "Leela Quantum Jacket" by test results, which are to be achieved by testing the subjects for deregulations caused by the cytotoxic stresses already mentioned, in order to significantly prove and compare their reactions without the "Leela Quantum Jacket" and with the "Leela Quantum Jacket".

- The BEFORE measurements are made without the "Leela Quantum Jacket".
- The AFTER measurements are taken after activation by the "Leela Quantum Jacket".



**The question in the AFTER measurements is:** "Is the "Leela Quantum Jacket" suitable and able to neutralize the so perceived negative effects of the tested environmental stresses on the organism of the test person?"

The appropriately designed tests were to provide information about this by comparing the preliminary measurements without the "Leela Quantum Jacket" with the test results of the follow-up measurements to be carried out using the "Leela Quantum Jacket".

The aim of the development team of the company Leela Quantum Tech LLC is to determine whether the test object, the "Leela Quantum Jacket", as noted in the product description, is suitable for neutralizing the deficiency symptoms and the associated disturbances in the meridian system of the test person.

#### **conditions:**

The BESA tests are performed on the premises of the IFVBESA under laboratory conditions, at a room temperature of 20° Celsius, on a natural wooden floor. The test persons are deswitcht (made testable) before the BESA tests or the test possibilities are questioned with the respective test person.

- Pos.1** BESA basic tests BEFORE (bioenergetic status) on all test persons
- Pos.2** BESA testing BEFORE of indicated cytotoxic loads from corresponding test ampoules on 2 test persons
- Pos.3** BESA testing BEFORE of indicated cytotoxic loads and EMSF on 2 test persons
- Pos.4** BESA testing AFTER of indicated cytotoxic loads and EMSF in connection with the "Leela Quantum Jacket".
- Pos.5** Evaluation of the results in the detailed project as well as summary in the corresponding expert opinion according to the sample.

#### **Procedure and specifications for the execution**

1. **BESA basic measurement of the test person** at all previously determined measurement points (TING points). This corresponds to the actual condition, so to speak. The results are determined exactly according to the BESA specifications and documented via the known BESA graphs.
2. Depending on the project, **the test person is brought into contact with the respective stress factors, i.e. first cytotoxic stress and then EMSF**, whereby the sequence discussed with the client is regarded as the specification and is adhered to accordingly. In order to be able to determine the current energy status, the measuring points mentioned under point 1 are measured in the same order and for the same duration for each test. The results are determined exactly according to the BESA specifications and documented via the BESA graphs.



### 3. Activation of the test object

To activate the test object or the "Leela Quantum Jacket", it is put on by the test persons according to the client's instructions and thus introduced into the measurement circuit. The measuring points mentioned under point 1 are measured in the same order and for the same duration in order to determine the current energy state. The results are determined exactly according to the BESA specifications and documented via the BESA graphs.

## Test procedure

### **BESA 1 BASIC Testing BEFORE as a status**

In the first step, a basic bioenergetic test (bioenergetic status) is performed on the meridian end points (TING points) of the test person.

### **BESA 2 Testing BEFORE - cytotoxic stresses**

In the further BESA testing process, the effect of the digitally displayed test ampoules is tested on the test person. The question is: How does the meridian system react? How does the energetic status change when confronted with the cytotoxic stresses? What are the differences in each case compared to BESA 1 BASIC testing BEFORE?

### **BESA 3 Testing BEFORE - cytotoxic stresses and EMSF**

In the further BESA testing process, the effect of the cytotoxic stresses is additionally tested in correlation with the EMSF on the test persons. The question is: How does the meridian system react? How does the energetic status change when confronted with the mentioned factors? What are the differences between BESA 1 BASIC testing BEFORE and BESA 2 testing AFTER?

### **BESA 4 Testing AFTER cytotoxic stress and EMSF in connection with the "Leela Quantum Jacket"**

In this BESA test, the cytotoxic stresses and the EMSF from the pre-testing are reactivated and tested together with the "Leela Quantum Jacket" on the test person. Now the question is: How does the meridian system of the test person react to the effect of the "Leela Quantum Jacket"?



# Proband 1

## BESA 1 Testing BASIC-BEFORE

### BESA 1 BASIC Testing BEFORE as a status

Eva Krankl performs a basic BESA measurement on the test person. All BESA tests are performed at the TING points (40 nail fold points on the fingers and toes).

**Goal:** The creation of a basic test (status) as a representation of the energetic initial situation for all further BESA tests.

BESA Test evaluation P73 3.0

from **11-02-2021 at 12:15 – 12:20** (5 Minutes) page 11 and 12

**result:** The overall measurement result indicated energetic stress at the meridian endpoints and subsequently on the subordinate metabolic situation of the test person.

**92 % in the blue area**

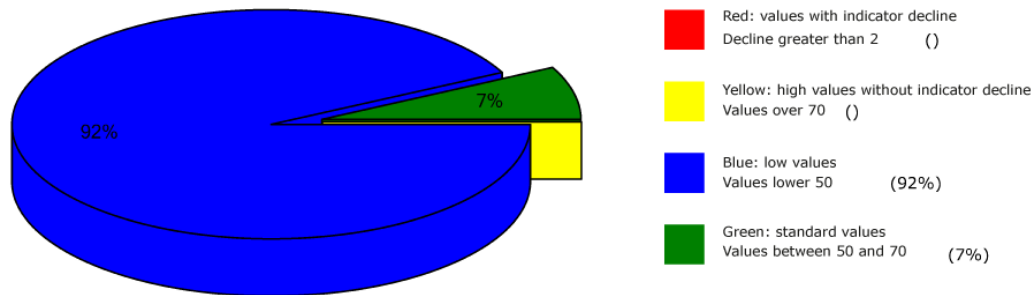
**7 % in the green area**

**1 % in the yellow transition area**

**Conclusion:** As the BESA graphs and the pie chart show, 92 % of the measurement results were in the blue, degenerative range (energy deficiency). As can be seen from this BESA-BASIC test, some blue readings are just at the 50 sec mark (green and optimal reading).



## Overview of BESA measuring



## BESA basic test

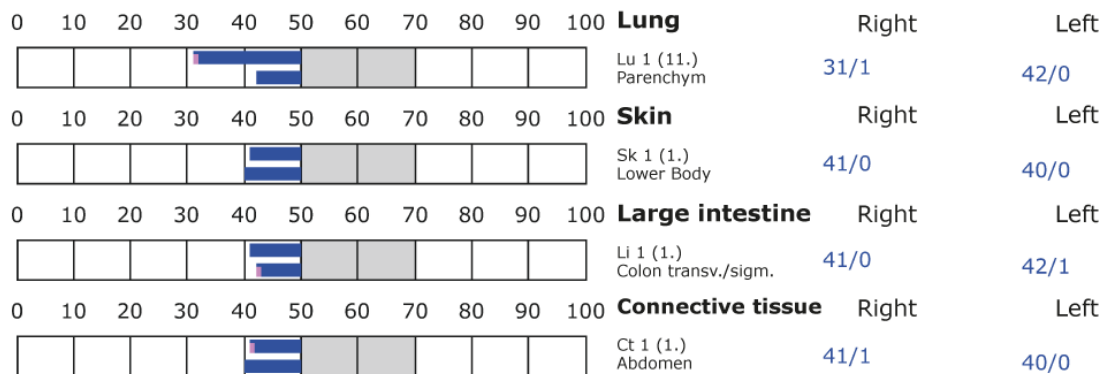
+++ : Indicator decline > 15 Skt.  
++ : Indicator decline 6-15 Skt.  
+ : Indicator decline 3-5 Skt.

T: Total inflammation (>89 Skt.)  
P: Partial inflammation (70-89 Skt.)

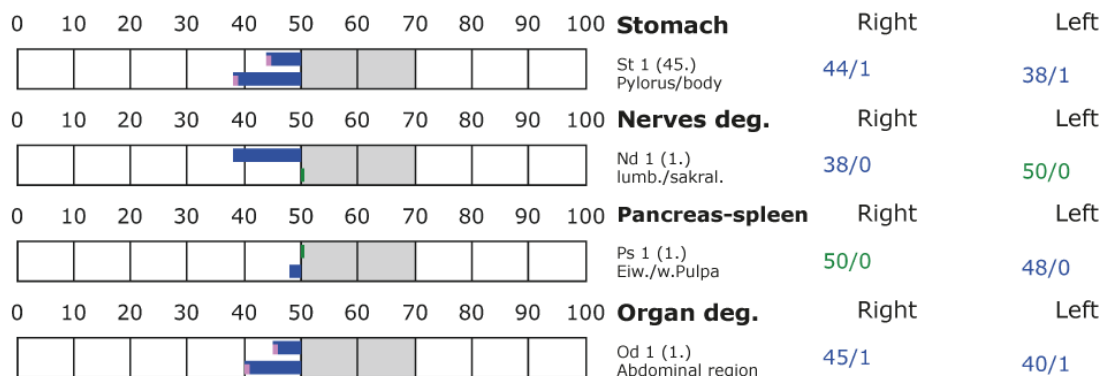
D: Degeneration (< 50 Skt.)

Standard values: (50-70 Skt.)

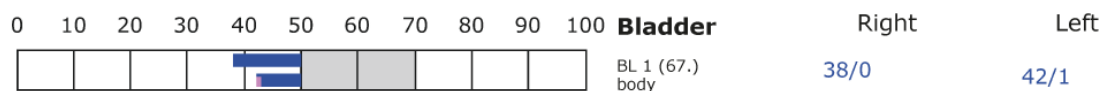
### Element: lu - sk - li - ct



### Element: st - nd - ps - od



### Element: bl - ly - ki - al





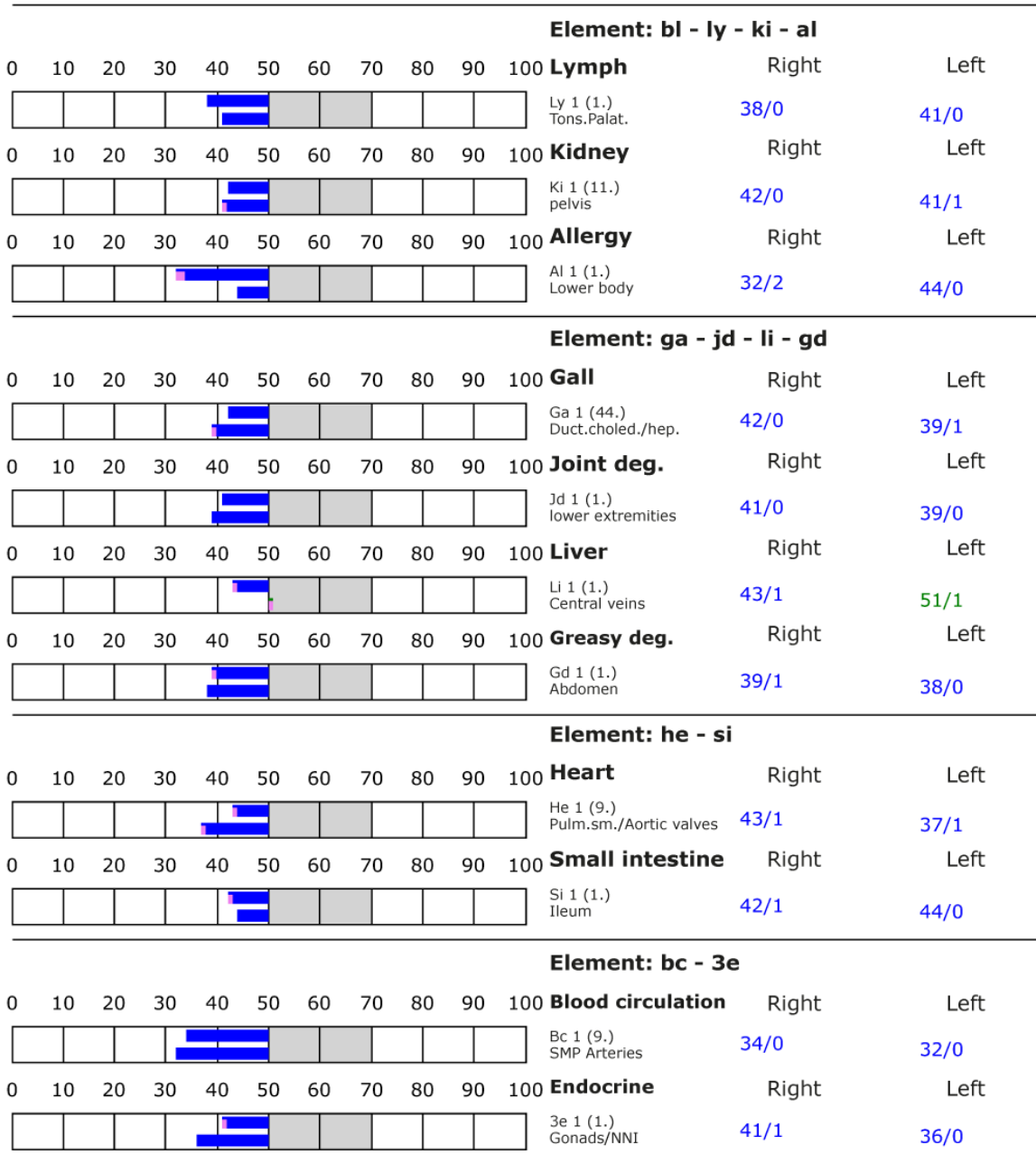
## BESA basic test

+++ : Indicator decline > 15 Skt.  
++ : Indicator decline 6-15 Skt.  
+ : Indicator decline 3-5 Skt.

T: Total inflammation (>89 Skt.)  
P: Partial inflammation (70-89 Skt.)

D: Degeneration (< 50 Skt.)

Standard values: (50-70 Skt.)





## BESA 2 Testing BEFORE

### BESA 2 Testing BEFORE - Cytotoxins

In the further BESA test procedure, the cytotoxins presented as digital test ampoules (as listed on page 7) are introduced into the measuring circuit and tested on the test person. All BESA tests are performed at the TING points (40 nail fold points on the fingers and toes).

**Goal:** to determine the response of the subject's meridian system within the stress factors from the cytotoxin test ampoules. Determination of the differences compared to the BESA 1 test BASIC BEFORE.

#### BESA Test evaluation P73 3.0

from **11-02-2021 at 12:22 – 12:27** (5 Minutes) page 14 and 15

**result:** The measurement result indicated heavy energetic stress at the meridian endpoints and subsequently on the subordinate metabolic situation of the test person.

**82 % in the blue area**

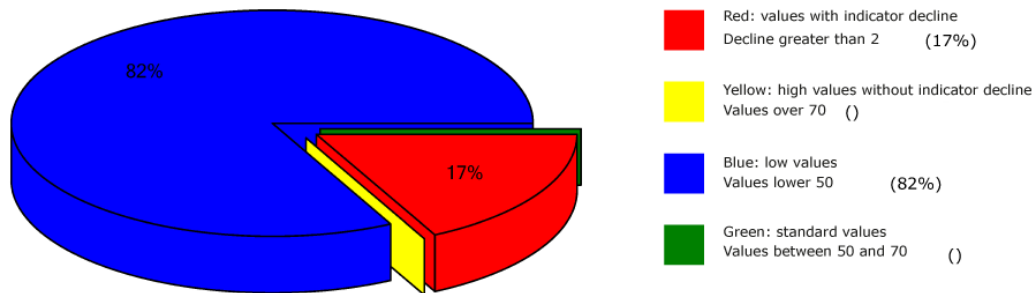
**17 % in the red area**

**1 % in the yellow transition area**

**Conclusion:** As the BESA graphs show, many measurement points are in the degenerative blue area (energy deficiency). However, the picture is dramatic due to the now many measured values in the red area. Here it is important to mention that the BESA 1 test BASIC BEFORE did not show any red measured values and the test person was not exposed to any previous stresses! This BESA test showed a significant deterioration of the subject's energetic situation compared to the BESA 1 test BASIC BEFORE. The red readings represent a total deregulation of these energy areas. This means that the energy system of the organism would seriously damage the test person in case of permanent influences of such or similar interference fields. For a balancing of these red readings or in other words: for a neutralization of the values the energy system needs a strong positive impulse from outside. The comparisons of the BESA graphs confirm the change and the stressing influences by the cytotoxins on the test person.



## Overview of BESA measuring



## BESA basic test

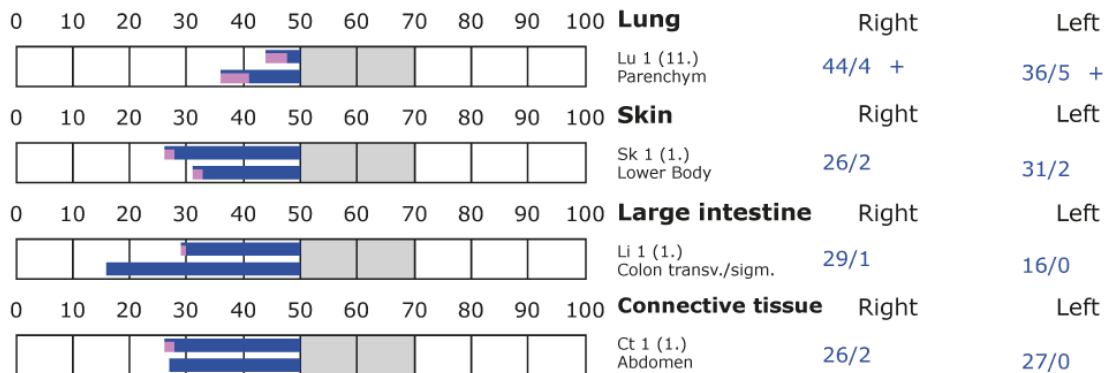
+++ : Indicator decline > 15 Skt.  
++ : Indicator decline 6-15 Skt.  
+ : Indicator decline 3-5 Skt.

T: Total inflammation (>89 Skt.)  
P: Partial inflammation (70-89 Skt.)

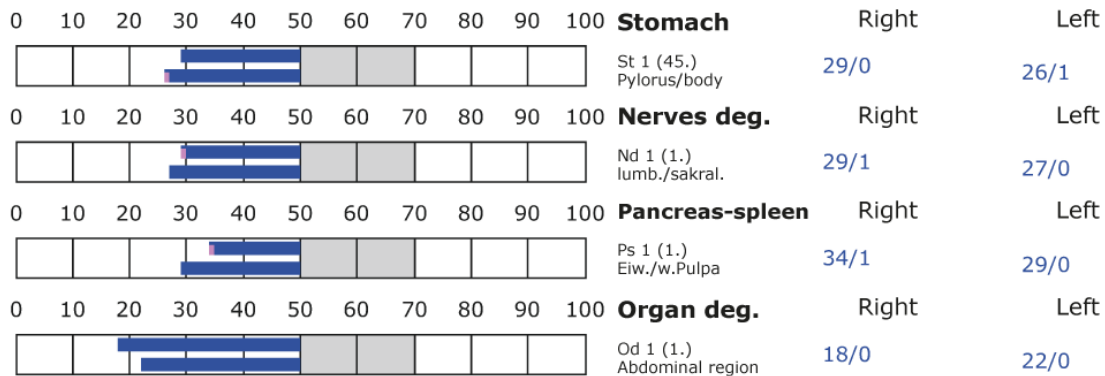
D: Degeneration (< 50 Skt.)

Standard values: (50-70 Skt.)

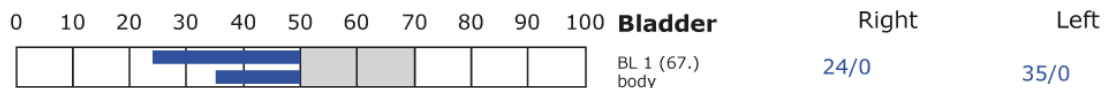
### Element: lu - sk - li - ct



### Element: st - nd - ps - od



### Element: bl - ly - ki - al





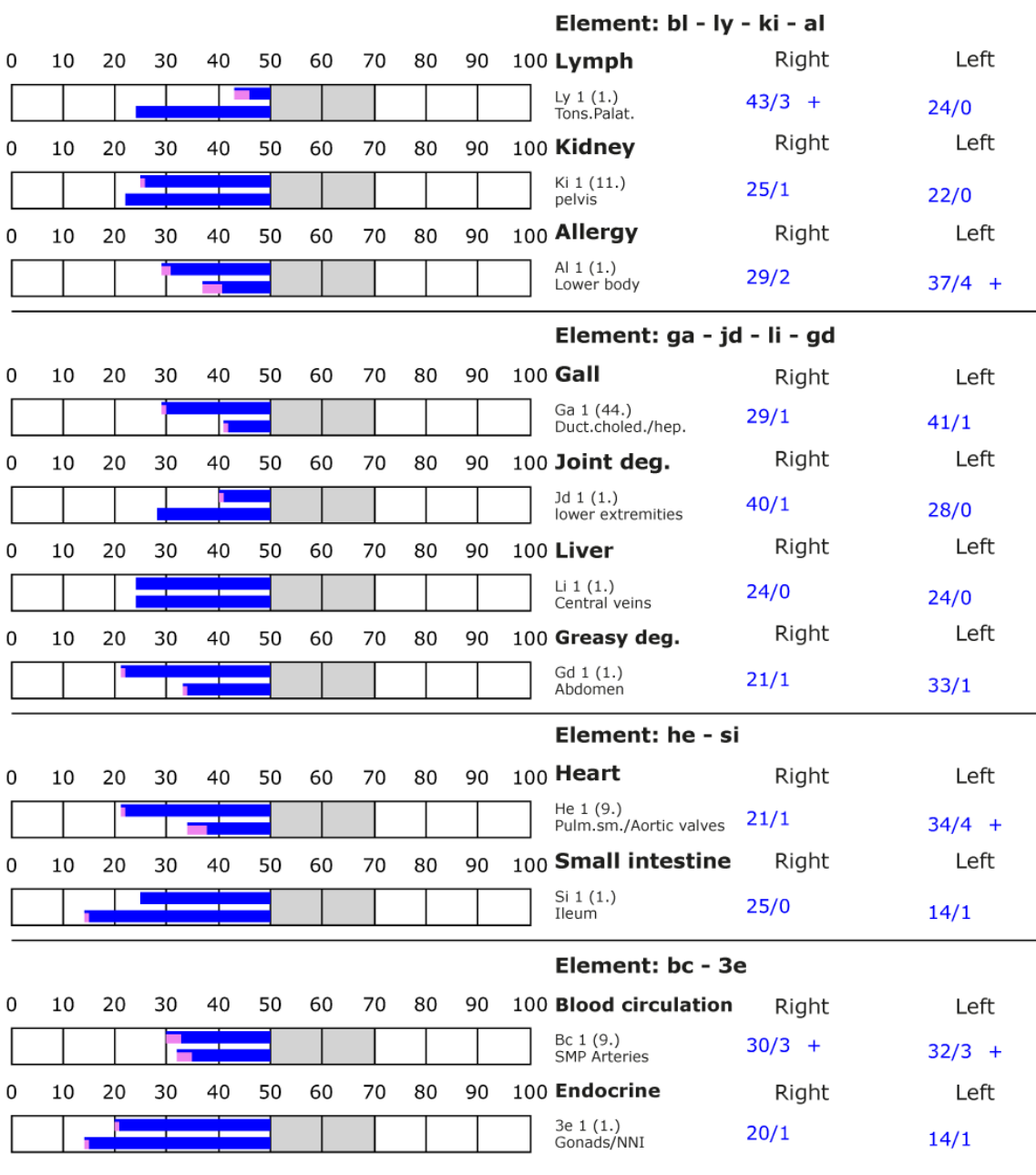
## BESA basic test

+++ : Indicator decline > 15 Skt.  
++ : Indicator decline 6-15 Skt.  
+ : Indicator decline 3-5 Skt.

T: Total inflammation (>89 Skt.)  
P: Partial inflammation (70-89 Skt.)

D: Degeneration (< 50 Skt.)

Standard values: (50-70 Skt.)





## BESA 3 Testing BEFORE

### BESA 3 Testing BEFORE of cytotoxins in correlation with EMSF

In the further BESA test procedure, the cytotoxins shown as digital test ampoules (see page 7) are introduced into the measuring circuit and the correlation with EMSF is tested on the test person. For this purpose, the EMSFs mentioned on page 7 are activated. All BESA tests are performed at the TING points (40 nail fold points on the fingers and toes).

**Goal:** to determine the response of the meridian system on the subject within the stress factors from cytotoxins and the EMSFs. Determination of the differences compared to the BESA 1 test BASIC BEFORE and BESA 2 test BEFORE.

#### BESA Test evaluation P73 3.0

from **11-02-2021 at 11:39 – 11:43** (4 Minutes) page 17 and 18

**result:** The measurement result indicated severe energetic stress at the meridian endpoints and subsequently on the subordinate metabolic situation of the test person.

**82 % in the blue area**

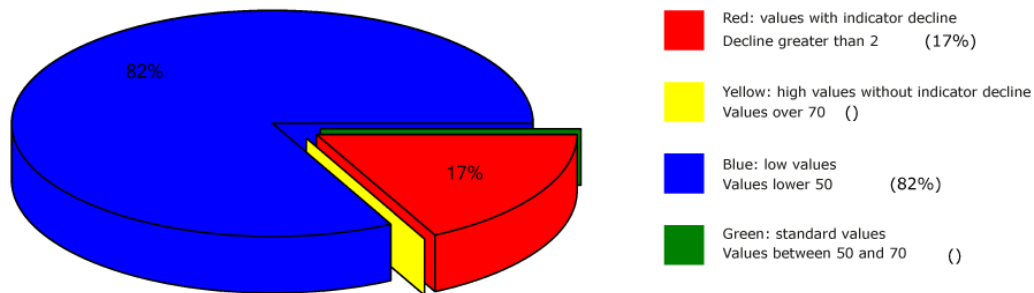
**17 % in the red area**

**1 % in the yellow transition area**

**Conclusion:** As the BESA graphs show, this measurement result seems to be a mirror image of the previous BESA 2 testing. However, the very low blue readings indicate a further deterioration of the measurement result. However, the picture is again dramatic due to the again many measured values in the red range. Once again this measurement result confirms how much EMSF, especially in correlation with other disturbance frequencies (stress factors) like in this case those from snow and rain, stress the energetic system of humans. This BESA test showed a significant deterioration of the subject's energetic situation compared to the BESA 1 test BASIC BEFORE and BESA 2 BEFORE. The red readings represent a total deregulation of these energy areas. This means that the energy system of the organism would seriously damage the test person in case of permanent influences of such or similar interference fields. For a balancing of these red measured values or in other words: for a neutralization of the values the energy system needs a strong positive impulse from the outside.



## Overview of BESA measuring



## BESA basic test

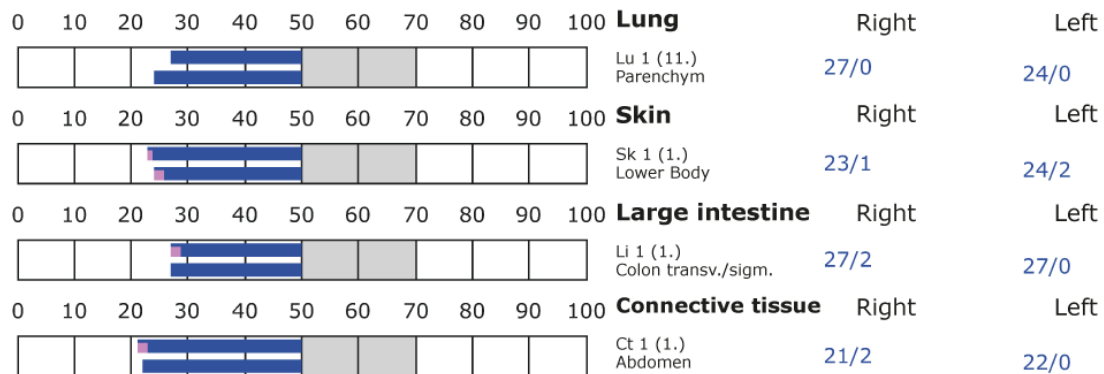
+++ : Indicator decline > 15 Skt.  
++ : Indicator decline 6-15 Skt.  
+ : Indicator decline 3-5 Skt.

T: Total inflammation (>89 Skt.)  
P: Partial inflammation (70-89 Skt.)

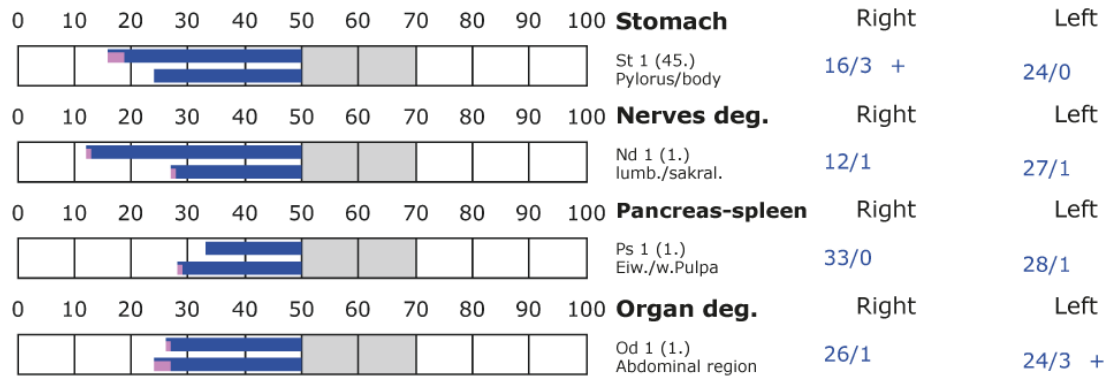
D: Degeneration (< 50 Skt.)

Standard values: (50-70 Skt.)

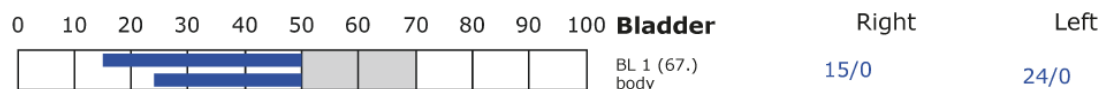
### Element: lu - sk - li - ct



### Element: st - nd - ps - od



### Element: bl - ly - ki - al





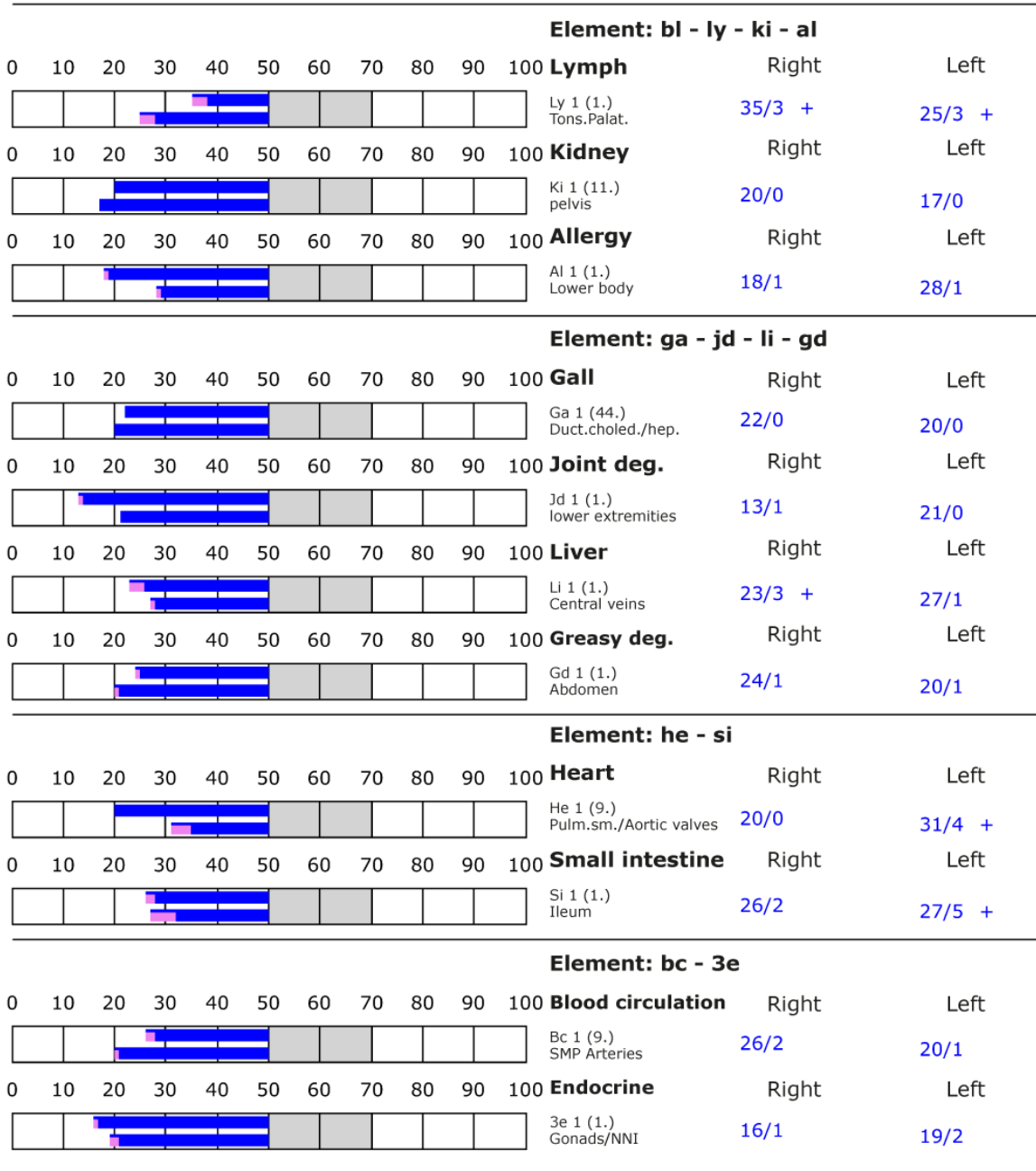
## BESA basic test

+++ Indicator decline > 15 Skt.  
++ Indicator decline 6-15 Skt.  
+ Indicator decline 3-5 Skt.

T: Total inflammation (>89 Skt.)  
P: Partial inflammation (70-89 Skt.)

D: Degeneration (< 50 Skt.)

Standard values: (50-70 Skt.)





## BESA 4 Testing AFTER

### **BESA 3 Testing AFTER - Cytotoxins and EMSF in combination with the "Leela Quantum Jacket"**

In the further course of the BESA test, the cytotoxins (corresponding test ampoules) and the EMSF are activated and tested on the test person together with the "Leela Quantum Jacket". In addition, a cell phone connection is again established, and the cell phone is again located on one of the subject's thighs during BESA testing. All BESA tests are performed at the TING points (40 nail fold points on the fingers and toes).

**Goal:** To determine the response of the subject's meridian system when all stress factors are applied to the subject together with the "Leela Quantum Jacket"? To determine the differences compared to the BESA 1, BESA 2 and BESA 3 tests BEFORE.

#### BESA Test evaluation P73 3.0

from **11-02-2021 at 16:26 – 16:31** (5 Minutes) page 20 and 21

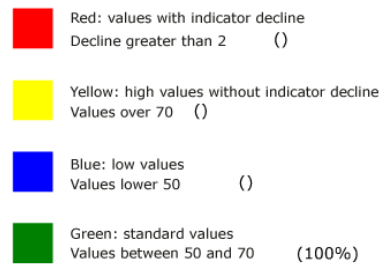
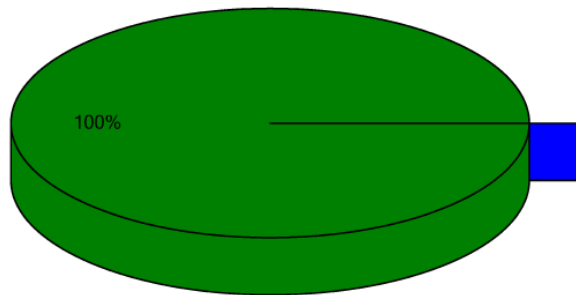
**result:** The measurement result shows significant improvements on the meridian endpoints or on the energetic state of the test person.

**100 % in the green area**

**Conclusion:** As the BESA graphs show, after testing the "Leela Quantum Jacket" all measurement points were in the green, optimal and neutralized range (balanced energy system). The BESA testing shows a significant improvement of the energy situation in the meridian system of the test person compared to the BESA 1 and especially the BESA 2 and BESA 3 tests BEFORE. It is shown that the "Leela Quantum Jacket" is able to give the red readings (total deregulation) detected in the BESA tests BEFORE the necessary impulse for harmonization (neutralization) into a life-supporting range. The comparisons of the BESA graphs confirm the change and resolution of the stressed (red) acupuncture points on the meridian system of the subject.



## Overview of BESA measuring



## BESA basic test

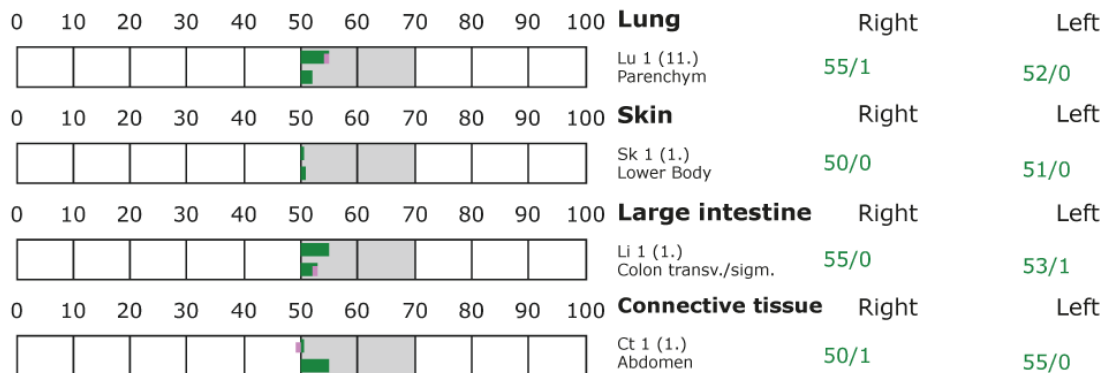
+++ : Indicator decline > 15 Skt.  
++ : Indicator decline 6-15 Skt.  
+ : Indicator decline 3-5 Skt.

T: Total inflammation (>89 Skt.)  
P: Partial inflammation (70-89 Skt.)

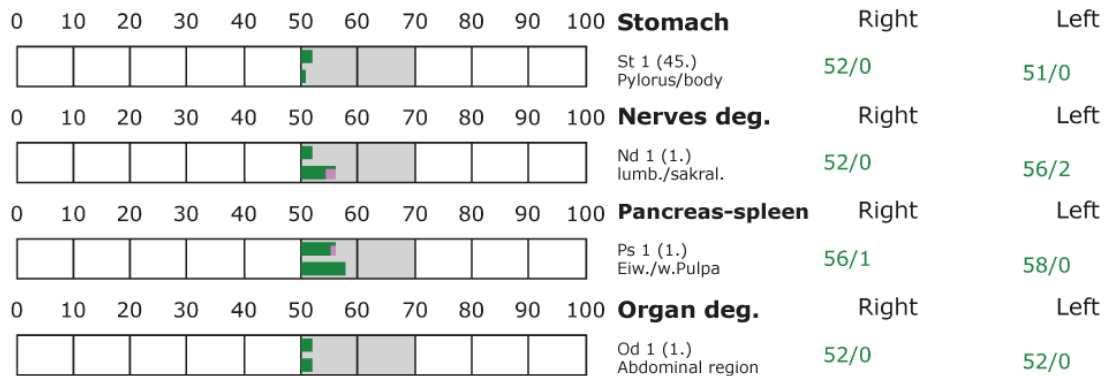
D: Degeneration (< 50 Skt.)

Standard values: (50-70 Skt.)

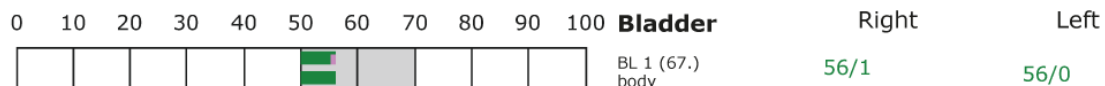
### Element: lu - sk - li - ct



### Element: st - nd - ps - od



### Element: bl - ly - ki - al





## BESA basic test

+++ Indicator decline > 15 Skt.  
++ Indicator decline 6-15 Skt.  
+ Indicator decline 3-5 Skt.

T: Total inflammation (>89 Skt.)  
P: Partial inflammation (70-89 Skt.)

D: Degeneration (< 50 Skt.)

Standard values: (50-70 Skt.)

Element: bl - ly - ki - al													
0 10 20 30 40 50 60 70 80 90 100					<b>Lymph</b>	Right	Left						
					Ly 1 (1.) Tons.Palat.	58/1	50/0						
0 10 20 30 40 50 60 70 80 90 100					<b>Kidney</b>	Right	Left						
					Ki 1 (11.) pelvis	52/0	52/0						
0 10 20 30 40 50 60 70 80 90 100					<b>Allergy</b>	Right	Left						
					Al 1 (1.) Lower body	50/0	55/1						
Element: ga - jd - li - gd													
0 10 20 30 40 50 60 70 80 90 100					<b>Gall</b>	Right	Left						
					Ga 1 (44.) Duct.choled./hep.	52/0	53/0						
0 10 20 30 40 50 60 70 80 90 100					<b>Joint deg.</b>	Right	Left						
					Jd 1 (1.) lower extremities	51/0	53/0						
0 10 20 30 40 50 60 70 80 90 100					<b>Liver</b>	Right	Left						
					Li 1 (1.) Central veins	53/1	54/1						
0 10 20 30 40 50 60 70 80 90 100					<b>Greasy deg.</b>	Right	Left						
					Gd 1 (1.) Abdomen	51/1	52/1						
Element: he - si													
0 10 20 30 40 50 60 70 80 90 100					<b>Heart</b>	Right	Left						
					He 1 (9.) Pulm.sm./Aortic valves	50/0	52/0						
0 10 20 30 40 50 60 70 80 90 100					<b>Small intestine</b>	Right	Left						
					Si 1 (1.) Ileum	53/0	55/1						
Element: bc - 3e													
0 10 20 30 40 50 60 70 80 90 100					<b>Blood circulation</b>	Right	Left						
					Bc 1 (9.) SMP Arteries	52/0	58/1						
0 10 20 30 40 50 60 70 80 90 100					<b>Endocrine</b>	Right	Left						
					3e 1 (1.) Gonads/NNI	50/1	51/0						



## Proband 2

### BESA 1 Testing BASIC-BEFORE

#### **BESA 1 BASIC Testing BEFORE as a status**

Eva Krankl performs a basic BESA measurement on the test person. All BESA tests are performed at the TING points (40 nail fold points on the fingers and toes).

**Goal:** The creation of a basic test (status) as a representation of the energetic initial situation for all further BESA tests.

BESA Test evaluation P73 3.0

from **11-02-2021 at 13:04 – 13:09** (5 Minutes) page 23 and 24

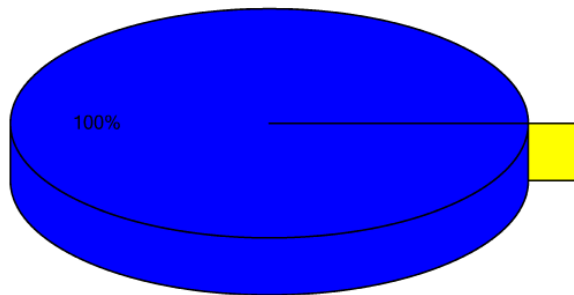
**result:** The overall measurement result indicated energetic stress at the meridian endpoints and subsequently on the subordinate metabolic situation of the test person.

**100 % in the blue area**

**Conclusion:** As the BESA graphs and the pie chart show, 100 % of the measurement results were in the blue, degenerative range (energy deficiency). As can be seen from this BESA-BASIC test, some blue readings are just at the 50 sec mark (green and optimal reading) indicating only slight deregulation.



## Overview of BESA measuring



- Red: values with indicator decline  
Decline greater than 2 ( )
- Yellow: high values without indicator decline  
Values over 70 ( )
- Blue: low values  
Values lower 50 (100%)
- Green: standard values  
Values between 50 and 70 ( )

## BESA basic test

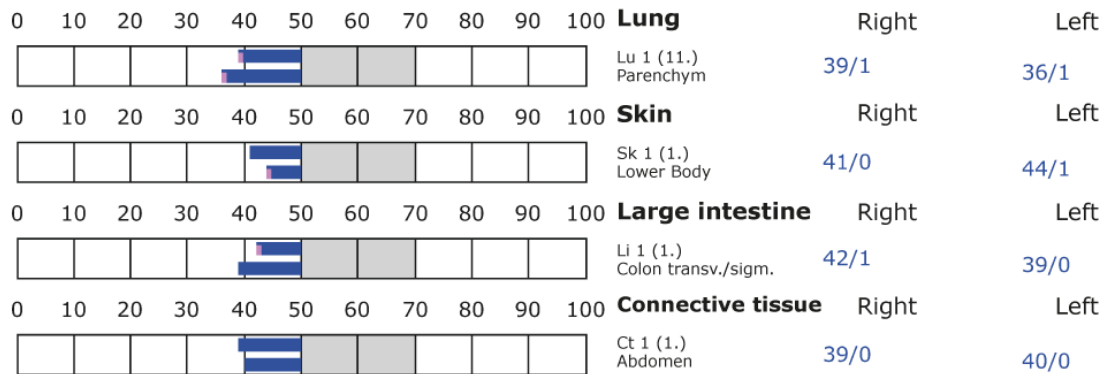
+++ : Indicator decline > 15 Skt.  
++ : Indicator decline 6-15 Skt.  
+ : Indicator decline 3-5 Skt.

T: Total inflammation (>89 Skt.)  
P: Partial inflammation (70-89 Skt.)

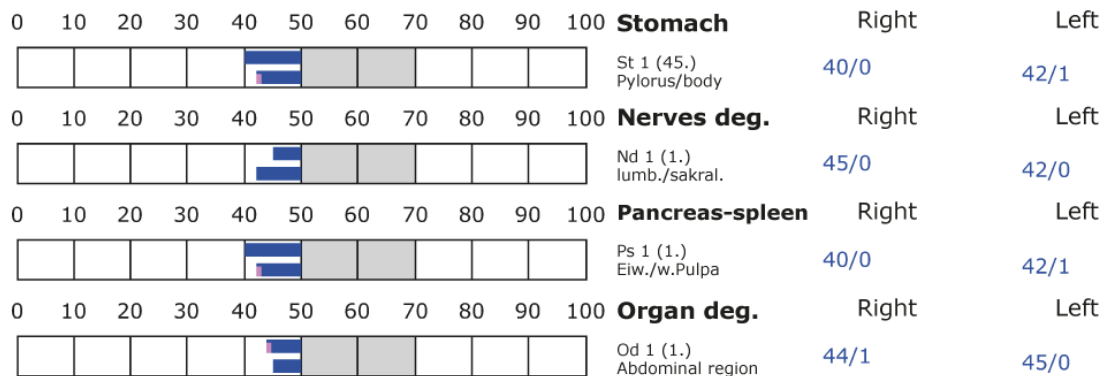
D: Degeneration (< 50 Skt.)

Standard values: (50-70 Skt.)

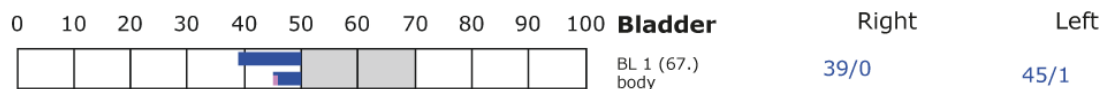
### Element: lu - sk - li - ct



### Element: st - nd - ps - od



### Element: bl - ly - ki - al





## BESA basic test

+++ : Indicator decline > 15 Skt.  
++ : Indicator decline 6-15 Skt.  
+ : Indicator decline 3-5 Skt.

T: Total inflammation (>89 Skt.)  
P: Partial inflammation (70-89 Skt.)

D: Degeneration (< 50 Skt.)

Standard values: (50-70 Skt.)

Element: bl - ly - ki - al													
0	10	20	30	40	50	60	70	80	90	100	<b>Lymph</b>	Right	Left
											Ly 1 (1.) Tons.Palat.	41/1	32/0
0	10	20	30	40	50	60	70	80	90	100	<b>Kidney</b>	Right	Left
											Ki 1 (11.) pelvis	37/0	44/0
0	10	20	30	40	50	60	70	80	90	100	<b>Allergy</b>	Right	Left
											Al 1 (1.) Lower body	43/2	48/0
Element: ga - jd - li - gd													
0	10	20	30	40	50	60	70	80	90	100	<b>Gall</b>	Right	Left
											Ga 1 (44.) Duct.choled./hep.	42/1	41/0
0	10	20	30	40	50	60	70	80	90	100	<b>Joint deg.</b>	Right	Left
											Jd 1 (1.) lower extremities	39/0	43/1
0	10	20	30	40	50	60	70	80	90	100	<b>Liver</b>	Right	Left
											Li 1 (1.) Central veins	39/0	36/1
0	10	20	30	40	50	60	70	80	90	100	<b>Greasy deg.</b>	Right	Left
											Gd 1 (1.) Abdomen	40/1	42/1
Element: he - si													
0	10	20	30	40	50	60	70	80	90	100	<b>Heart</b>	Right	Left
											He 1 (9.) Pulm.sm./Aortic valves	45/0	43/0
0	10	20	30	40	50	60	70	80	90	100	<b>Small intestine</b>	Right	Left
											Si 1 (1.) Ileum	40/0	41/0
Element: bc - 3e													
0	10	20	30	40	50	60	70	80	90	100	<b>Blood circulation</b>	Right	Left
											Bc 1 (9.) SMP Arteries	41/1	46/0
0	10	20	30	40	50	60	70	80	90	100	<b>Endocrine</b>	Right	Left
											3e 1 (1.) Gonads/NNI	44/1	37/1



## BESA 2 Testing BEFORE

### BESA 2 Testung VORHER - cytotoxins

In the further BESA test procedure, the cytotoxins presented as digital test ampoules (as listed on page 7) are introduced into the measuring circuit and tested on the test person. All BESA tests are performed at the TING points (40 nail fold points on the fingers and toes).

Objective: to determine the response of the subject's meridian system within the stress factors from the cytotoxin test ampoules. Determination of the differences compared to the BESA 1 test BASIC BEFORE.

#### BESA Test evaluation P73 3.0

from **11-02-2021 at 13:09 – 13:14** (5 Minutes) page 14 and 15

**result:** The measurement result indicated heavy energetic stress at the meridian endpoints and subsequently on the subordinate metabolic situation of the test person.

**97 % in the blue area**

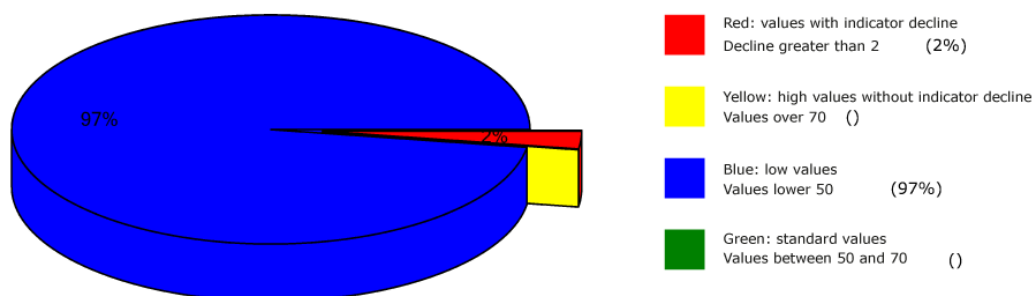
**2 % in the red area**

**1 % in the yellow transition area**

**Conclusion:** As the BESA graphs show, many measurement points are in the degenerative blue area (energy deficiency). 2% are even in the red area. Here it is important to mention that the BESA 1 test BASIC BEFORE did not show any red measuring values and the test person was not exposed to any previous stress! This BESA test showed a significant deterioration of the subject's energetic situation compared to the BESA 1 test BASIC BEFORE. The red readings represent a total deregulation of these energy areas. This means that the energy system of the organism would seriously damage the test person in case of permanent influences of such or similar interference fields. For a balancing of these red readings or in other words: for a neutralization of the values the energy system needs a strong positive impulse from outside. The comparisons of the BESA graphs confirm the change and the stressing influences by the cytotoxins on the test person.



## Overview of BESA measuring



## BESA basic test

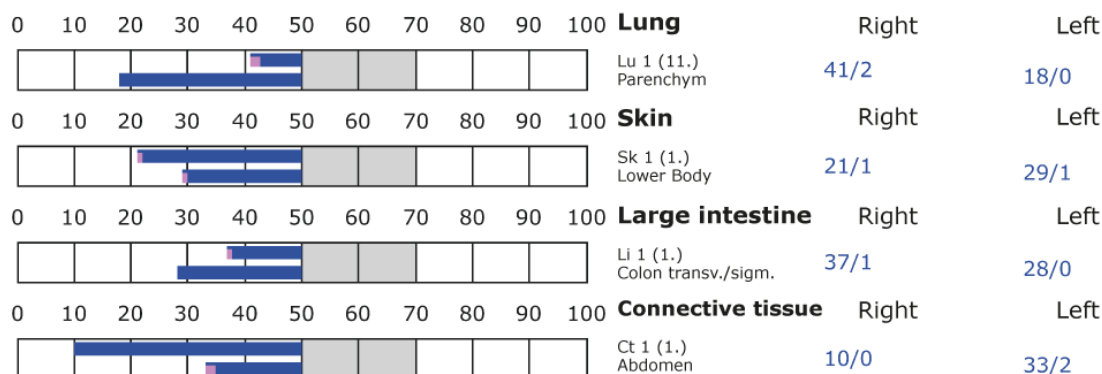
+++ : Indicator decline > 15 Skt.  
++ : Indicator decline 6-15 Skt.  
+ : Indicator decline 3-5 Skt.

T: Total inflammation (>89 Skt.)  
P: Partial inflammation (70-89 Skt.)

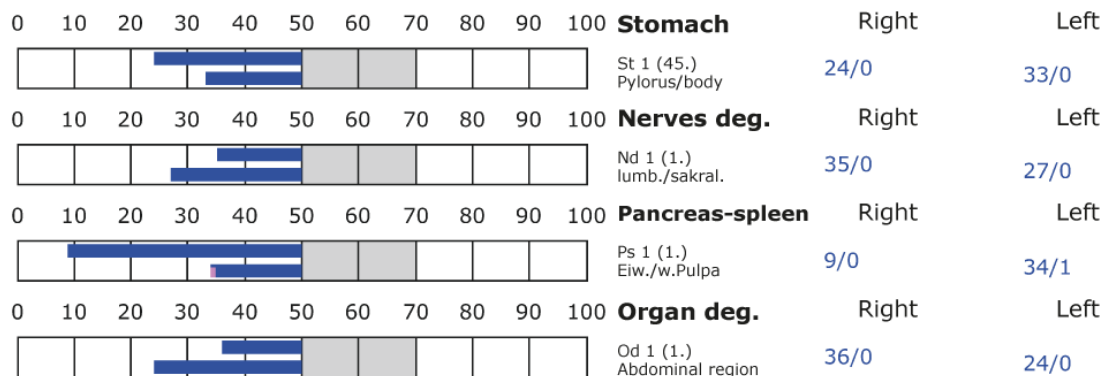
D: Degeneration (< 50 Skt.)

Standard values: (50-70 Skt.)

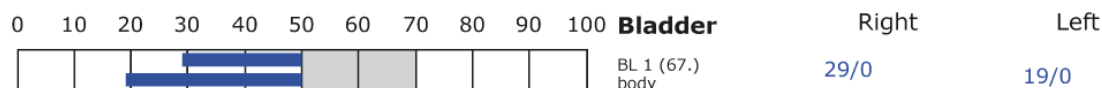
### Element: lu - sk - li - ct



### Element: st - nd - ps - od



### Element: bl - ly - ki - al





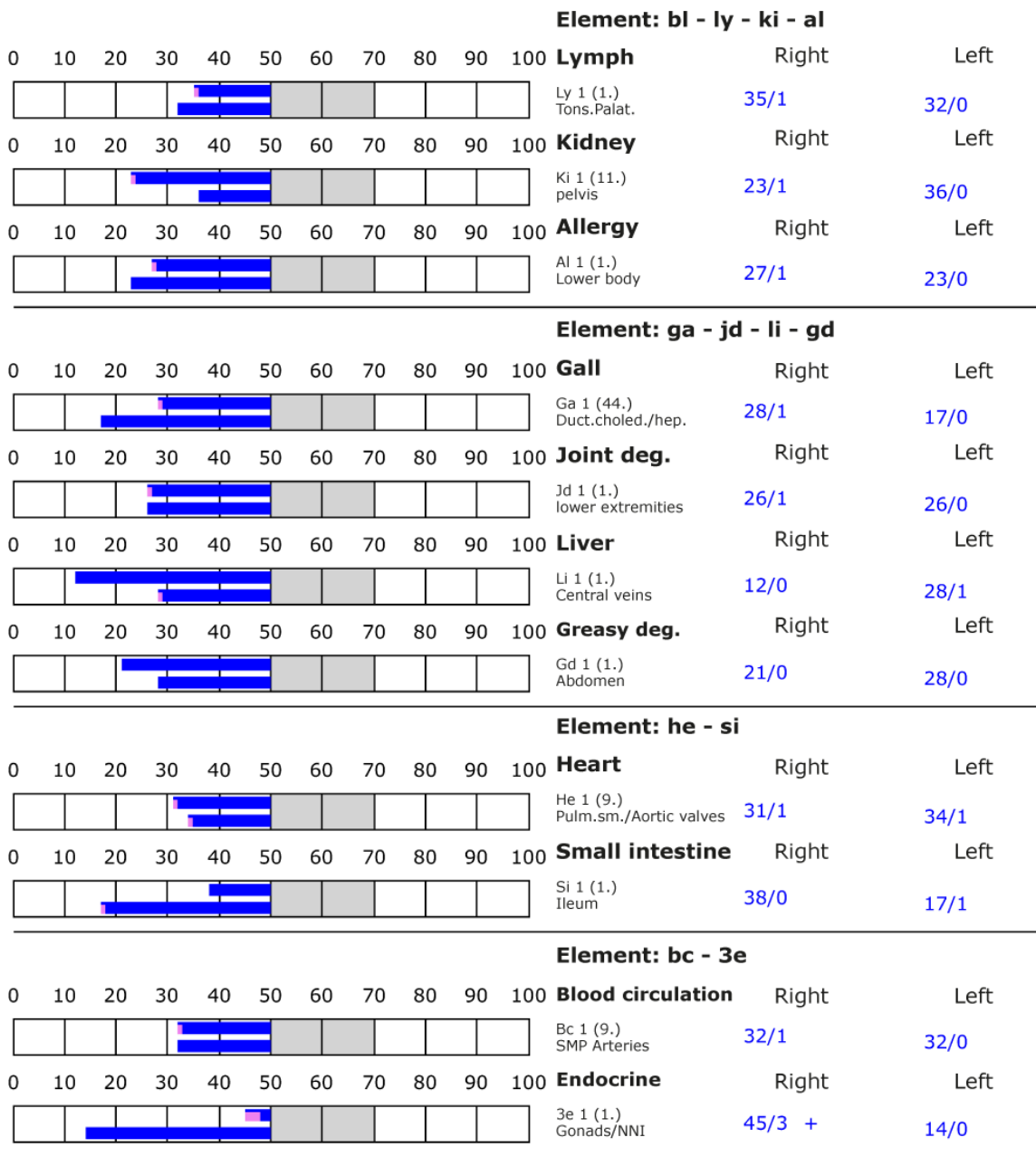
## BESA basic test

+++ : Indicator decline > 15 Skt.  
++ : Indicator decline 6-15 Skt.  
+ : Indicator decline 3-5 Skt.

T: Total inflammation (>89 Skt.)  
P: Partial inflammation (70-89 Skt.)

D: Degeneration (< 50 Skt.)

Standard values: (50-70 Skt.)





## BESA 3 Testing BEFORE

### BESA 3 Testing BEFORE of cytotoxins in correlation with EMSF

In the further BESA test procedure, the cytotoxins shown as digital test ampoules (see page 7) are introduced into the measuring circuit and the correlation with EMSF is tested on the test person. For this purpose, the EMSFs mentioned on page 7 are activated. All BESA tests are performed at the TING points (40 nail fold points on the fingers and toes).

**Goal:** to determine the response of the meridian system on the subject within the stress factors from cytotoxins and the EMSFs. Determination of the differences compared to the BESA 1 test BASIC BEFORE and BESA 2 test BEFORE.

#### BESA Test evaluation P73 3.0

from **11-02-2021 at 16:14 – 16:19** (5 Minutes) page 29 and 30

**result:** The measurement result indicated severe energetic stress at the meridian endpoints and subsequently on the subordinate metabolic situation of the test person.

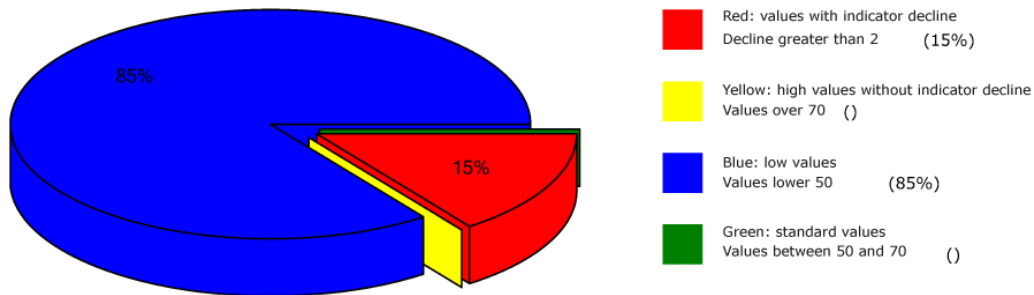
**85 % in the blue area**

**15 % in the red area**

**Conclusion:** As the BESA graphs show, very many measured values are in the blue and degenerative range. Dramatically, however, the picture shows the increase of the many measured values in the red range. Once again this measurement result confirms how much EMSF, especially in correlation with other disturbance frequencies (stress factors) like in this case those from snow and rain, stress the human energetic system. This BESA test showed a significant deterioration of the subject's energetic situation compared to the BESA 1 test BASIC BEFORE and BESA 2 BEFORE. The red readings represent a total deregulation of these energy areas. This means that the energy system of the organism would seriously damage the test person in case of permanent influences of such or similar interference fields. For a balancing of these red measured values or in other words: for a neutralization of the values the energy system needs a strong positive impulse from the outside.



## Overview of BESA measuring



## BESA basic test

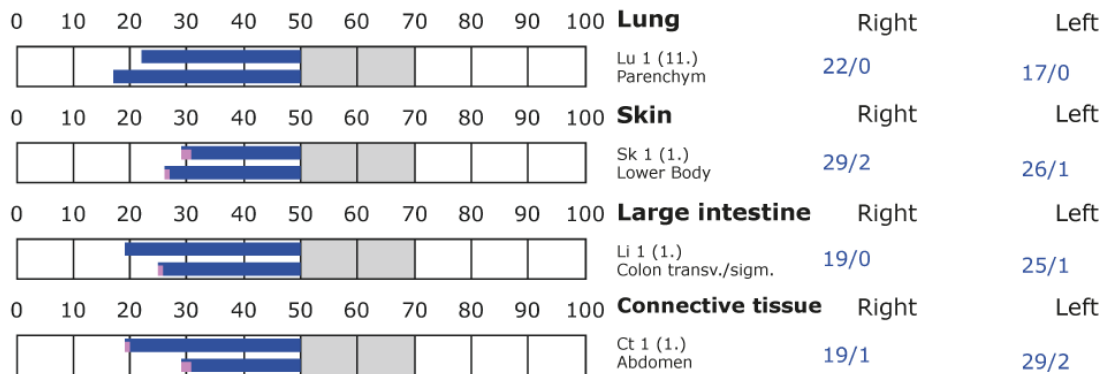
+++ : Indicator decline > 15 Skt.  
++ : Indicator decline 6-15 Skt.  
+ : Indicator decline 3-5 Skt.

T: Total inflammation (>89 Skt.)  
P: Partial inflammation (70-89 Skt.)

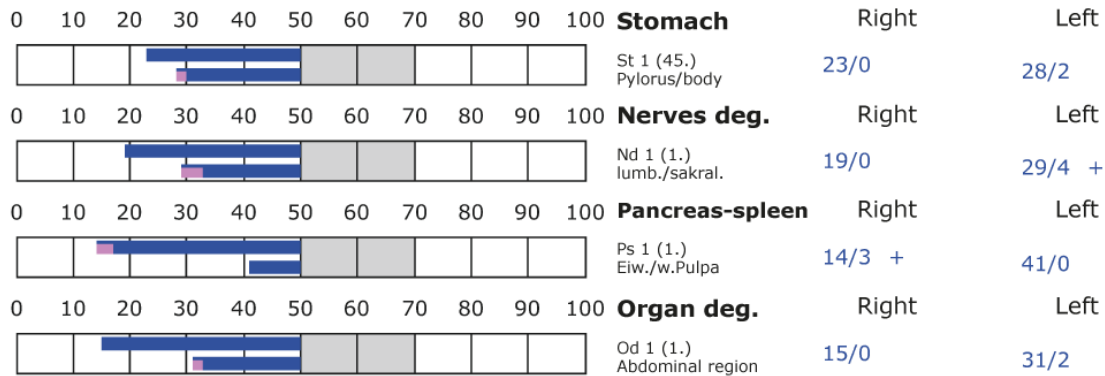
D: Degeneration (< 50 Skt.)

Standard values: (50-70 Skt.)

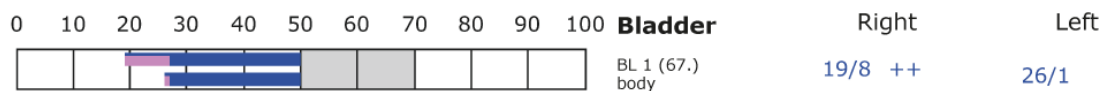
### Element: lu - sk - li - ct



### Element: st - nd - ps - od



### Element: bl - ly - ki - al





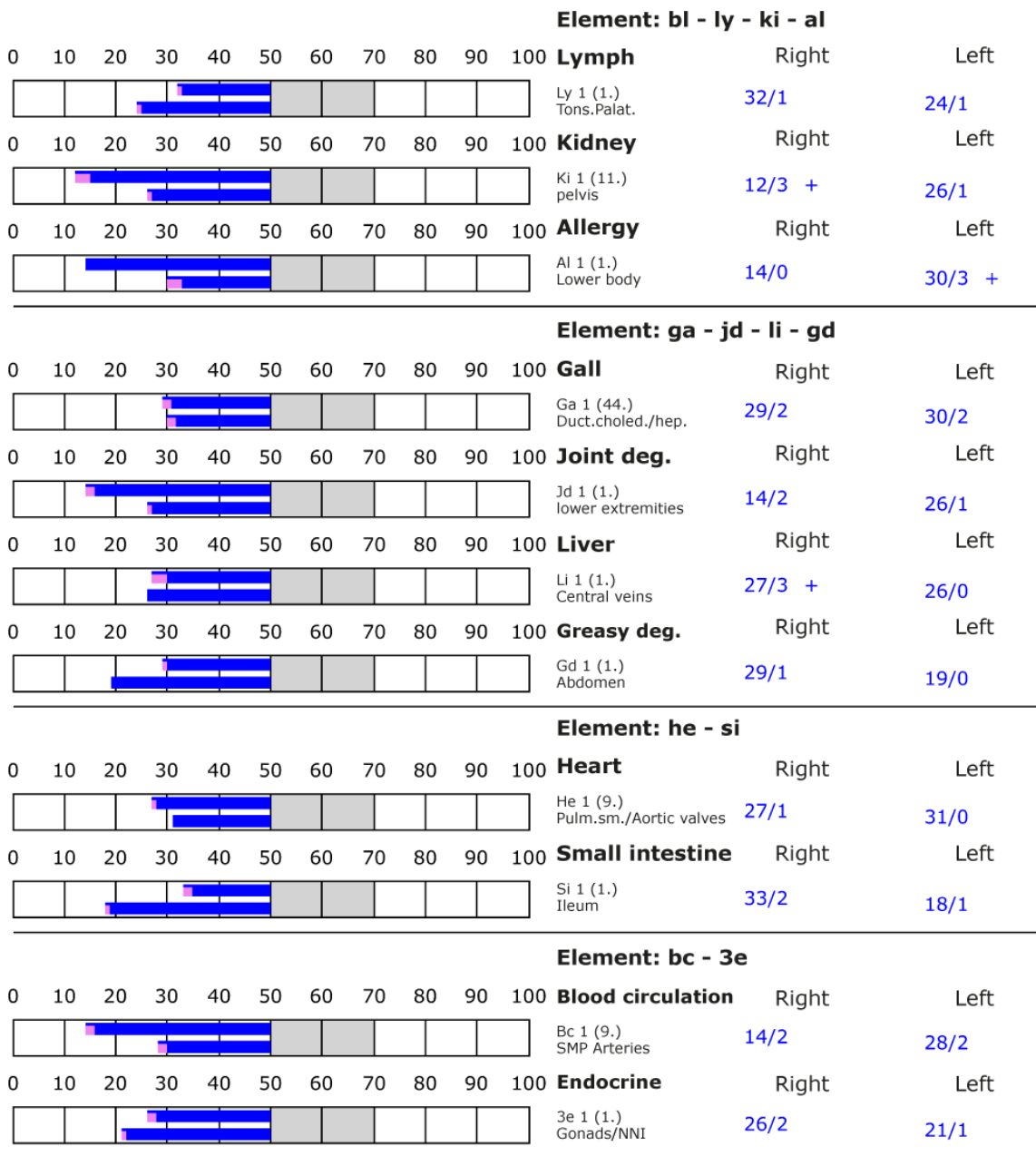
## BESA basic test

+++ : Indicator decline > 15 Skt.  
++ : Indicator decline 6-15 Skt.  
+ : Indicator decline 3-5 Skt.

T: Total inflammation (>89 Skt.)  
P: Partial inflammation (70-89 Skt.)

D: Degeneration (< 50 Skt.)

Standard values: (50-70 Skt.)





## BESA 4 Testing AFTER

### **BESA 3 Testing AFTER – Cytotoxins and EMSF in combination with the "Leela Quantum Jacket"**

In the further course of the BESA test, the cytotoxins (corresponding test ampoules) and the EMSF are activated and tested on the test person together with the "Leela Quantum Jacket". In addition, a cell phone connection is again established, and the cell phone is again located on one of the subject's thighs during BESA testing. All BESA tests are performed at the TING points (40 nail fold points on the fingers and toes).

**Goal:** To determine the response of the subject's meridian system when all stress factors are applied to the subject together with the "Leela Quantum Jacket"? To determine the differences compared to the BESA 1, BESA 2 and BESA 3 tests BEFORE.

#### BESA Test evaluation P73 3.0

from **11-02-2021 at 16:21 – 16:25** (6 Minutes) page 32 and 33

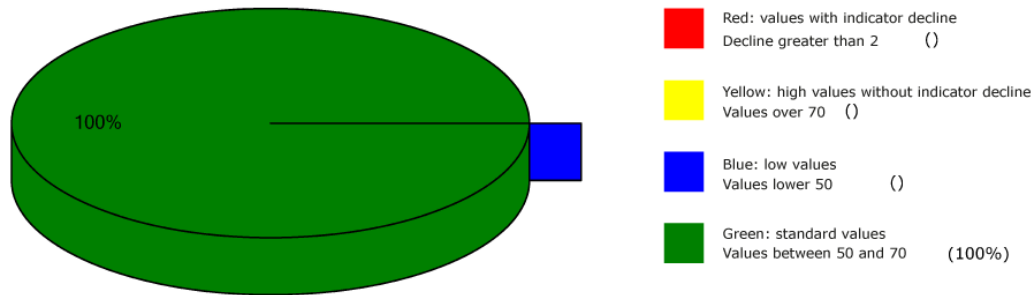
**result:** The measurement result shows significant improvements on the meridian endpoints or on the energetic state of the test person.

#### **100 % in the green area**

**Conclusion:** As the BESA graphs show, after testing the "Leela Quantum Jacket" all measurement points were in the green, optimal and neutralized range (balanced energy system). The BESA testing shows a significant improvement of the energy situation in the meridian system of the test person compared to the BESA 1 and especially the BESA 2 and BESA 3 tests BEFORE. It is shown that the "Leela Quantum Jacket" is able to give the red readings (total deregulation) detected in the BESA tests BEFORE the necessary impulse for harmonization (neutralization) into a life-supporting range. The comparisons of the BESA graphs confirm the change and resolution of the stressed (red) acupuncture points on the meridian system of the subject.



## Overview of BESA measuring



## BESA basic test

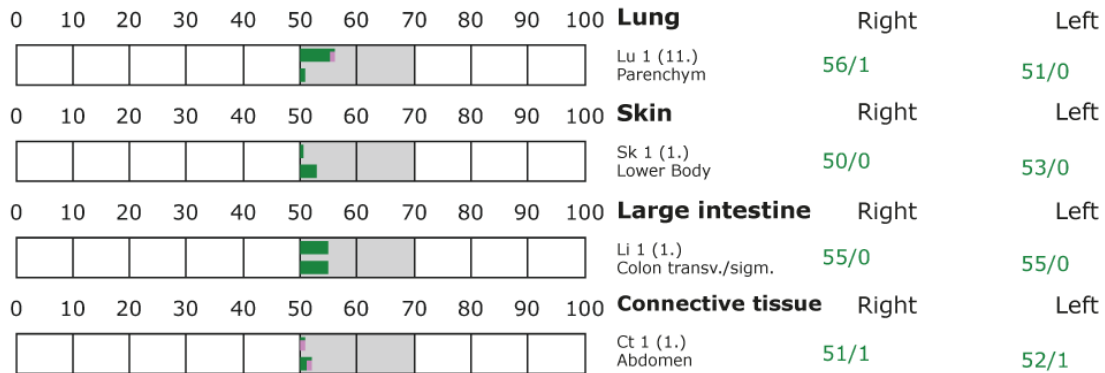
+++ : Indicator decline > 15 Skt.  
++ : Indicator decline 6-15 Skt.  
+ : Indicator decline 3-5 Skt.

T: Total inflammation (>89 Skt.)  
P: Partial inflammation (70-89 Skt.)

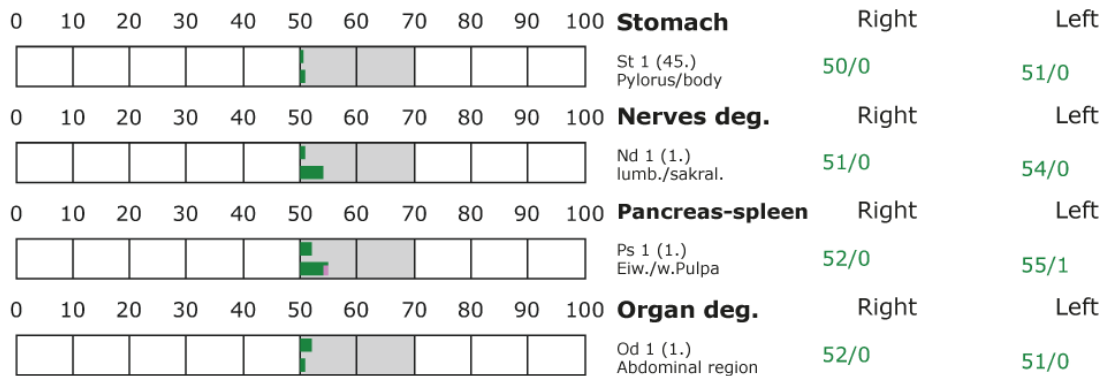
D: Degeneration (< 50 Skt.)

Standard values: (50-70 Skt.)

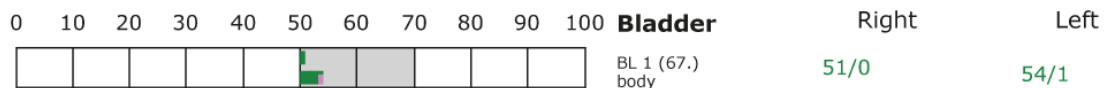
### Element: lu - sk - li - ct



### Element: st - nd - ps - od



### Element: bl - ly - ki - al





## BESA basic test

+++ : Indicator decline > 15 Skt.  
++ : Indicator decline 6-15 Skt.  
+ : Indicator decline 3-5 Skt.

T: Total inflammation (>89 Skt.)  
P: Partial inflammation (70-89 Skt.)

D: Degeneration (< 50 Skt.)

Standard values: (50-70 Skt.)

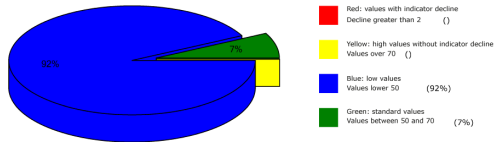
Element: bl - ly - ki - al													
0	10	20	30	40	50	60	70	80	90	100	<b>Lymph</b>	Right	Left
											Ly 1 (1.) Tons.Palat.	51/0	51/0
0	10	20	30	40	50	60	70	80	90	100	<b>Kidney</b>	Right	Left
											Ki 1 (11.) pelvis	51/1	51/0
0	10	20	30	40	50	60	70	80	90	100	<b>Allergy</b>	Right	Left
											Al 1 (1.) Lower body	51/0	54/1
Element: ga - jd - li - gd													
0	10	20	30	40	50	60	70	80	90	100	<b>Gall</b>	Right	Left
											Ga 1 (44.) Duct.choled./hep.	51/0	51/0
0	10	20	30	40	50	60	70	80	90	100	<b>Joint deg.</b>	Right	Left
											Jd 1 (1.) lower extremities	51/0	51/1
0	10	20	30	40	50	60	70	80	90	100	<b>Liver</b>	Right	Left
											Li 1 (1.) Central veins	51/1	51/1
0	10	20	30	40	50	60	70	80	90	100	<b>Greasy deg.</b>	Right	Left
											Gd 1 (1.) Abdomen	50/1	53/0
Element: he - si													
0	10	20	30	40	50	60	70	80	90	100	<b>Heart</b>	Right	Left
											He 1 (9.) Pulm.sm./Aortic valves	53/0	51/1
0	10	20	30	40	50	60	70	80	90	100	<b>Small intestine</b>	Right	Left
											Si 1 (1.) Ileum	53/1	53/1
Element: bc - 3e													
0	10	20	30	40	50	60	70	80	90	100	<b>Blood circulation</b>	Right	Left
											Bc 1 (9.) SMP Arteries	51/0	55/0
0	10	20	30	40	50	60	70	80	90	100	<b>Endocrine</b>	Right	Left
											3e 1 (1.) Gonads/NNI	54/0	51/1



## All BESA tests at a glance

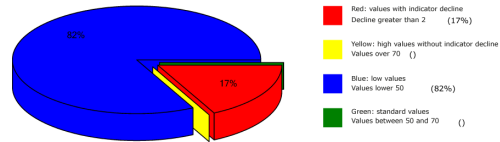
### Proband 1

Overview of BESA measuring



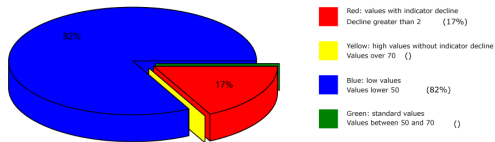
### Cytotoxins

Overview of BESA measuring



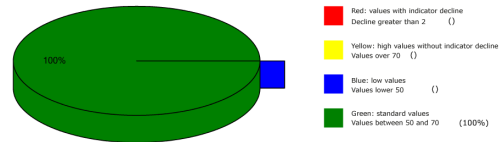
### Cytotoxins in Correlation with EMSF

Overview of BESA measuring



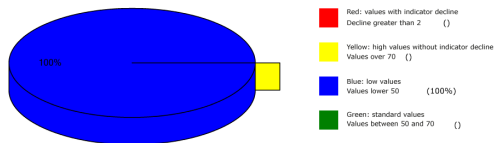
### BESA Testing after using the „Leela Quantum Jacket“

Overview of BESA measuring



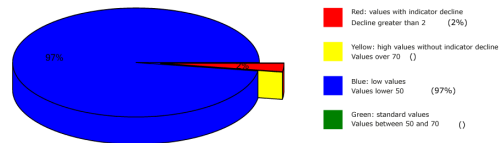
### Proband 2

Overview of BESA measuring



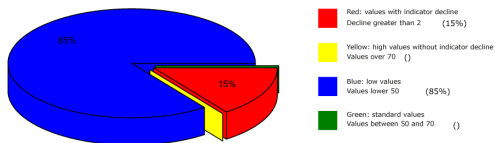
### Cytotoxins

Overview of BESA measuring



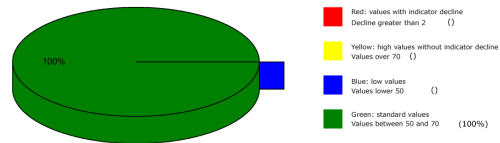
### Cytotoxins in Correlation with EMSF

Overview of BESA measuring



### BESA Testing after using the „Leela Quantum Jacket“

Overview of BESA measuring





## General information about the test result

The human being or all biological objects represent a kind of receiving antenna for environmental information. This is because the life of man and all other biological objects depends fundamentally and exclusively on environmental information. Our organism is biologically very sensitive where natural information (fields) are located or where they are subject to interactions and fluctuations. **For this reason, detected informative electromagnetic interference fields are biologically highly relevant. Any reduction or transformation of these interfering fields (ideally to 100 percent) is biologically very important, often even decisive for life.**

These informational disturbances from our environment are only compatible with life if they can be readjusted to a natural fluctuation tolerance. Disturbances, problems, blockades, disharmonies in the biological control circuit of man find their causes in such disturbing information influences.

**Neutralizing or harmonizing effects could be proven in this detailed project P73 3.0 to determine the effect of the "Leela Quantum Jacket".** The "Leela Quantum Jacket" was able to neutralize the biologically adverse effects and effects determined on the test person in the project.

**The significant ability of the "Leela Quantum Jacket" to neutralize and harmonize the stress factors tested in this detailed project P73 3.0 and transform them into biological life-enhancing goodness is proven with this project.**

## Authorized Summary

The BESA tests carried out by IFVBESA on the energetic and physical effectiveness of the "Leela Quantum Jacket" have clearly shown that it is able to neutralize or harmonize biologically significant stress factors on the energetic system of the test person. By means of the bioenergetic system analysis, the effect of the above-mentioned stress factors on the test persons, their meridian system and their energetic-biological control circuits was questioned and systemically tested on the bioenergetic level. The BESA tests BEFORE - AFTER show significant changes at the tested acupuncture points or at the meridian system. The measurement data as well as their key figures impressively confirm, on the one hand, the stress caused by the tested interference fields on the organism of the test persons and, on the other hand, clarify how, after application of the "Leela Quantum Jacket", the deregulating energies are transformed into body-immanent and biocompatible energies. All measured values improved significantly from the mostly 100-percent blue measuring range to the green



Internationaler Fachverband für BESA | ZVR Nr. 975047937  
Hauptstraße 1, A 4861 Kammer-Schörfing am Attersee | Österreich - Austria  
Tel.: +43 – 664 – 73152899 | E-Mail: [info@ifvbesa.at](mailto:info@ifvbesa.at)

mostly 50-second range (scale value), i.e. the range of optimal measured values. This means: an optimal regulation dynamic has taken place. Here, in the sense of the IFVBESA, one can clearly speak of an optimal, significant improvement of the body's own energy situation.

**Result:** During the BESA-NACHHER tests, the test persons were brought into contact with severely stressing frequencies (information) from cytotoxins in correlation with EMSF (electromagnetic interference fields). In contrast to the BEFORE tests, in which the "Leela Quantum Jacket" was not used, consistently positive measurement results were found, indicating that neutralization or harmonization had taken place. The regulation dynamics developed into an optimal effective range. From a holistic point of view, it can be assumed that the positive effect on the test person will also occur in other people.

By proving the bioenergetic effectiveness of the "Leela Quantum Jacket" in this detailed project P73 3.0, the requirements for obtaining a BESA seal of approval by the International Professional Association for BESA were met.