



# IFVBESA

Information is crucial

P72 1.0 BESA-Detailproject  
Chemtrails + new-snow  
Leela Quantum Bloc



## Project P72 1.0 to BESA expert opinion

bioenergetic System analysis  
within the framework of the BESA seal of approval on the effectiveness  
of the product „Leela Quantum Bloc“  
for chemtrails and new snow  
also referred to as "test object" in the project.





Internationaler Fachverband für BESA | ZVR Nr. 975047937  
Hauptstraße 1, A 4861 Kammer-Schörfling am Attersee | Österreich - Austria  
Tel.: +43 – 664 – 73152899 | E-Mail: [info@ifvbesa.at](mailto:info@ifvbesa.at)

## Client

Firma Leela Quantum Tech, LLC  
Attn: Eleonora Goldenberg  
1421 LUISA STREET, STE G  
SANTA FEE, NM 87505  
USA

## Project participants:

**Project leader:** Wolfgang Hans Albrecht, präsident and scientific director of the IFVBESA

**Test person:** Eva Krankl, Vicepräsident and deputy scientific director of the IFVBESA

**Respondent:** 8 anonymous subject in the (Detail) Projects P72 1.0, P72 2.0, P72 3.0, P72 4.0 as well P72 4.1 and P72 4.2

These break down as follows:

- **1 Respondent at P72 1.0 - New-Snow (chemtrails)**
- **2 Respondent at P72 2.0 - Automatic-clocks in the Quantum bloc**
- **1 Respondent at P72 3.0 – Sweater at quantum entanglement via quantum-bloc**
- **5 Respondents at P72 4.0 - family home + quantum-bloc**
- **3 Respondents at P72 4.1 - family home without quantum-bloc**
- **3 Respondents at P72 4.2 - family home + quantum-bloc with quantum entanglement**

**other participants:** none

## Project location:

Location of the IFVBESA, Hauptstraße 1, A 4861 Kammer/Schörfling

**Date:** 27.12.2020 until 07.02.2020

**Project duration:** 42 Days



Internationaler Fachverband für BESA | ZVR Nr. 975047937  
Hauptstraße 1, A 4861 Kammer-Schörfling am Attersee | Österreich - Austria  
Tel.: +43 – 664 – 73152899 | E-Mail: [info@ifvbesa.at](mailto:info@ifvbesa.at)

## Table of contents

BESA-legend for <b>interpretation of BESA measurement results</b> .....	5
Basics of research project creation P72 .....	6
Research funding services of IFVBESA - BESA reference tests .....	6
Research project description (detailed project) .....	8
Test procedure .....	9
<b>Overview of all BESA-Tests</b> .....	19
General information about the test result .....	20
Authorized summary .....	20

### Important notes:

The client owns the right to exploit this project report. Irrespective of this, this report represents intellectual property of IFVBESA as the contractor. The contractor is entitled to use this project report for other purposes if this does not violate the client's data protection or confidentiality. On the other hand, the project report, with the exception of the "authorized abridged version", may not be changed or passed on in abridged form without the consent of the IFVBESA. The order for this project refers to bioenergetically measurable values and their interpretation according to the guidelines of BESA or the IFVBESA. The maintenance of the quality of the tested products as well as their regular control is the task and responsibility of the client. Investigation of the manufacture, mechanism of action or interpretations of the Client's products to third parties is not the responsibility or task of the Contractor. Video recordings may be made only with the permission of IFVBESA.



## BESA-legende for the interpretation of the BESA measurement results

The measured value of 50 on the tested meridian represents an optimal energetic state in this organ or its subordinate and superordinate levels. Also measured values in the range of 50 to max. 70 still count as a neutral and balanced energy status. The organism is able to regulate irritations of the system (wrong environmental signals) very well.

Measured values above 70 to 100 represent the inflammatory range or a so-called energy surplus as a reaction to the irritations of the system by corresponding environmental signals. After reaching the maximum values, the energy state tips into the degenerative (blue) range.

Measured values from below 50 to around 0 represent the so-called degenerative measuring range or a lack of energy as a reaction to the stimulation of the system by corresponding environmental signals.

Measured values represented by a so-called pointer drop of more than 3 scale lines indicate total deregulation. The influence of certain environmental signals then leads to such strong system overloads, which can only be brought into harmonization by corresponding new signals.

### BESA key figures:

<b>up to 0,79</b>	very deep energetic regulatory disorder (SSD) energy deficiency
<b>0,8 to 1,19</b>	strong energetic regulation disturbance (SD) degeneration/energy deficiency
<b>1,2 to 1,59</b>	energetic regulation disorder (D) degeneration/energy deficiency
<b>1,6 to 1,99</b>	degenerative transition area (DÜ)
<b>2,0 to 2,39</b>	optimal regulation (OR)
<b>2,4 to 2,79</b>	in the regulation (R)
<b>2,8 to 3,19</b>	partial inflammation = regional energy excess (PE)
<b>from 3,2</b>	total inflammation = strong general energy surplus (TE)





## Basics of the research project creation P72

The international professional association for bioenergetic system analysis was commissioned by the company Leela Quantum Tech LLC to test or prove the effect of the test object "Leela Quantum Bloc" by means of bioenergetic system analysis (BESA). The testing took place independently of the subjective feeling of all test persons.

### **Description of the "Leela Quantum Bloc" by the client:**

"Leela Quantum Bloc" is a quantum space generator and concentrator, which is highly concentrated inside the device between the plates. At the same time, the Quantum Bloc has an energetic extension of more than 100 meters, which however does not represent the concentrated quantum space, but a positive energetic quantum field. This quantum field neutralizes and harmonizes on the one hand negative frequencies and vibrations and on the other hand provides overall positive, inviting and peaceful energy. In the quantum space itself (between the plates), each object that is placed there is energetically restructured, optimized and charged with quantum energy within 60 seconds. It can be said from previous tests that any object that has been in the "Leela Quantum Bloc" becomes "better". Whether that is water, food, jewelry, technical devices, etc. The essential difference of the "Quantum Bloc" to other "quantum energy producing devices" is that the Quantum Bloc works on more than one level of consciousness (and thus on this level one-dimensional, figuratively represented like a flat field). The Quantum Bloc works on more than 50 levels at the same time and is therefore a multidimensional quantum space in every respect. This has the advantage, also among others compared to other devices, that even if the energy is increased, there is no imbalance or negative energetic pressure. This is especially important for users whose organism cannot yet handle such higher energy levels. Furthermore, the "Leela Quantum Bloc" needs only about 30 seconds to transfer a frequency in it from one object to another. We have also been able to observe this in 20 seconds, but officially advise a minute (60 seconds).

### The client assumes that the Quantum Bloc can produce the following effects:

- charge any object with comprehensive, positive quantum energy.
- For clarification: energies are always neutral. With "positive" the client wants to refer to the positively affecting energy of the objects in the room such as people, animals, plants, etc.
- copy any frequencies within only 1 minute
- harmonizing energy field for home, workplace, car, etc.
- harmonization of any negative frequencies
- helps to dive deeper into one's own consciousness (whether in meditation, daily life, "retrieving" information, etc.)



- optimizes food, water and all other substances
- positive effect on human cells and body (physical and energetic). For this purpose it is enough just to be in the expanded field of the Quantum Block. If one part of the body is in the concentrated quantum space, automatically not only the cells of this one part of the body, but the cells of the whole body are intensively touched.
- neutralizes unwanted "dark entities" or keeps them away due to the high light vibration or "brings" them into the light
- cleanses the aura
- supports positive affirmations within the framework of legality and also accelerates their manifestation within the framework of legality

## Research funding services of the IFVBESA - BESA- reference tests

General information about this project:

This detailed project P72 1.0 is about the proof of effect of the "Leela Quantum Bloc" against heavy metals, which were tested in the run-up to the BESA effect measurements by means of the bioenergetic system analysis in snow. For this project 1 test person was selected.

The client starts from the claim that by using the "Leela Quantum Bloc" possible pollutants such as heavy metals in the snow can be harmonized informatively and their frequencies can be transformed into positive, life-promoting vibrations. The Leela Quantum Block should therefore be practically and factually suitable for bringing the tested deficiency states in this snow back into the physiological norm. This will be tested on test persons via this BESA project. The "Leela Quantum Bloc" was tested according to the requirements of the client within the framework of the applicable conditions of the IFVBESA for the award of quality seals. Depending on the significance of the test results, seals of approval are awarded in 3 categories, taking into account all tests of a project.

The client and developer of the "Leela Quantum Bloc" assumes that it is able to compensate for the presented deficiency states of heavy metals in the snow on the test person as well as to replace the associated negative states with positive states.

Whether the "Leela Quantum Bloc" is able to do this is to be investigated in the following commissioned BESA tests on test persons.

To the general information of the information transfer:

The information transfer takes place from the hyperspace of the test object to the hyperspace of biological objects (humans, animals, plants). From there, the information reaches the reference space or the energy space via so-called interaction channels. This is a union of,



among other things, all organs and energy forms in the biological object. There, the information of the program can dynamically materialize and thus change current states. The changes can appear in the form of neutralization or harmonization of disturbances, dissolution of problems, blockages and disharmonies.

## Research Project Description (Detailed Project)

The reason for the tests is to prove the functionality of the "Leela Quantum Bloc" by test results, which are to be achieved by testing the test person for deficiency states against heavy metals in the fresh snow in order to significantly prove and compare his reactions without the "Leela Quantum Bloc" and with the "Leela Quantum Bloc".

- The BEFORE measurements are made without the "Leela Quantum Bloc".
- The AFTER measurement is carried out with the "Leela Quantum Bloc".

**The question** in the AFTER measurement is: "Is the "Leela Quantum Bloc" suitable and able to harmonize or neutralize the negative effects of the new snow on the organism of the test person perceived in this way?"

The correspondingly designed tests were to provide information about this by comparing the preliminary measurements without the "Leela Quantum Bloc" with the test results of the follow-up measurements to be carried out using the "Leela Quantum Bloc".

The concern of the development team of the company Leela Quantum Tech LLC is to have it determined whether the test object, the "Leela Quantum Bloc" as noted in the product description is suitable to neutralize the deficiency symptoms as well as the associated disturbances in the meridian system of the test person.

### Conditions:

The BESA tests are performed in the premises of IFVBESA under laboratory conditions, at room temperature 20° Celsius, on natural wooden floor. The test persons are deswicht (made testable) before the BESA tests or the test possibilities are questioned with the respective test person.

- |              |  |
|--------------|--|
| <b>Pos.1</b> | BESA Basic testing BEFORE (bioenergetic status) on the test person   |
| <b>Pos.2</b> | BESA AFTER testing of the new snow activated by the Leela Quantum Bloc on the test person                                    |
| <b>Pos.3</b> | Evaluation of the results in the detailed project as well as summary in the corresponding expert opinion according to sample |





## Procedure and specifications for the execution

1. **BESA-baseline measurement** of the test person at all previously determined measurement points (TING points). This corresponds to the actual condition, so to speak. The results are determined exactly according to the BESA specifications and documented via the known BESA graphs.
2. **the test person** is brought into **contact** with the **fresh snow depending** on the project, whereby the sequence discussed with the client is regarded as the specification and is adhered to accordingly. In order to be able to determine the current energy state, the measuring points mentioned under point 1 are measured in the same order and for the same duration during each test. The results are determined exactly according to the BESA specifications and documented via the BESA graphs.
3. **Aktivation of the test object**

When the **new snow** is **activated in the "Leela Quantum Bloc"**, it is placed in the "Leela Quantum Bloc" as specified by the client. The test subject is then contacted with the activated fresh snow. The measuring points mentioned under point 1 are measured in the same order and time duration to determine the current energy state. The results are determined exactly according to the BESA specifications and documented via the BESA graphs.

## Test procedure

### BESA 1 BASIC testing BEFORE as status

In the first step, a basic bioenergetic test (bioenergetic status) is performed on the meridian end points (TING points) of the test person.

### BESA 2 testing BEFORE with new snow

In the further BESA testing process, the effect of the new snow is tested on the test person. The question is: How does the meridian system react? How does the energetic status change when confronted with fresh snow? What are the differences in each case compared to the BESA 1 BASIC testing BEFORE?

### BESA 3 testung AFTER the new snow activated in the „Leela Quantum Bloc“

In the third BESA test, the snow activated in the Leela Quantum Bloc prior to the BESA test is introduced into the measuring circuit. Now the question is: How does the meridian system of the test person react to the snow activated in the Leela Quantum Bloc?



Internationaler Fachverband für BESA | ZVR Nr. 975047937  
Hauptstraße 1, A 4861 Kammer-Schörfling am Attersee | Österreich - Austria  
Tel.: +43 – 664 – 73152899 | E-Mail: [info@ifvbesa.at](mailto:info@ifvbesa.at)

**In a BESA pre-testing, the following stress factors were tested:**

Bacteria: Anthrax and Pneumonia (Pneumococcus).

Chem. substance (neurotransmitter): acetylcholine chloride

Heavy metals: aluminum oxide, barium oxide, strontium oxide, arsenic, gold, lead, mercury, silver, uranium, zinc oxide

further E-Coli Salmonella and thoriumThorium

## BESA 1 testing BASIC-BEFORE

### BESA 1 BASIC testing BEFORE as status

Eva Krankl performed a BESA basic measurement on the test person. All BESA tests are performed at the TING points (40 nail fold points on the fingers and toes).

**Goal:** The creation of a basic test (status) as a representation of the energetic initial situation for all further BESA tests.

BESA test evaluation P72 1.0  
from **28-12-2020 at 13:27 – 13:44** (17 Minutes) page 11 and 12

**result:**

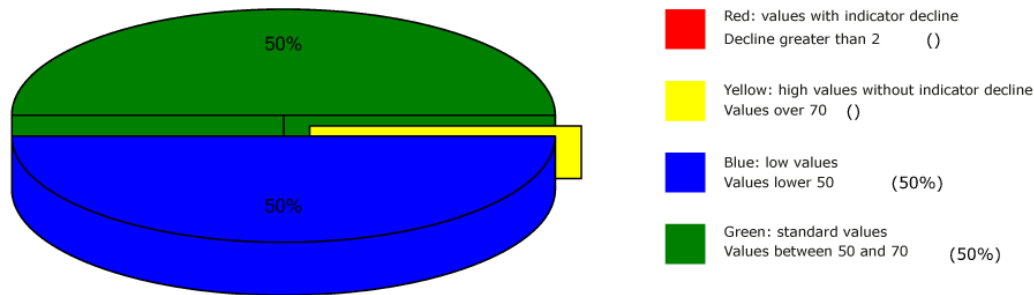
**50 % in the blue area**

**50 % in the green area**

**Conclusion:** as the BESA graphs and pie chart show, 50% of the measurement results were in the blue, degenerative range (energy deficiency).



## Overview of BESA measuring



## BESA basic test

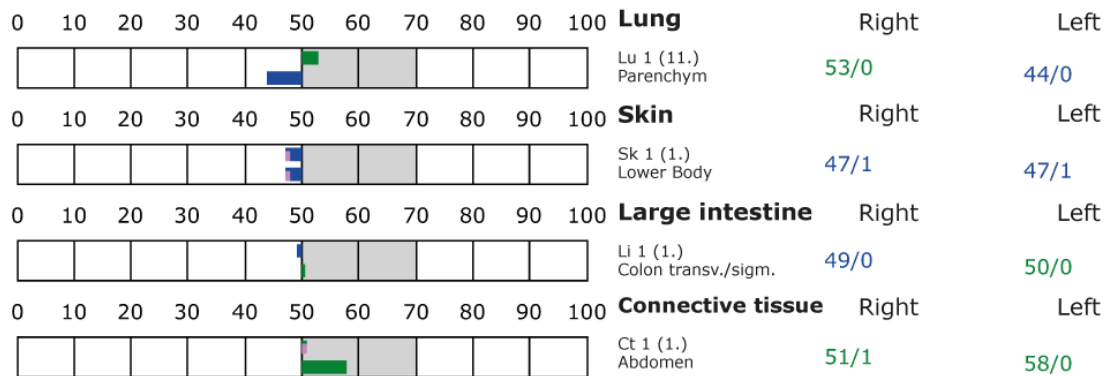
+++ : Indicator decline > 15 Skt.  
++ : Indicator decline 6-15 Skt.  
+ : Indicator decline 3-5 Skt.

T: Total inflammation (>89 Skt.)  
P: Partial inflammation (70-89 Skt.)

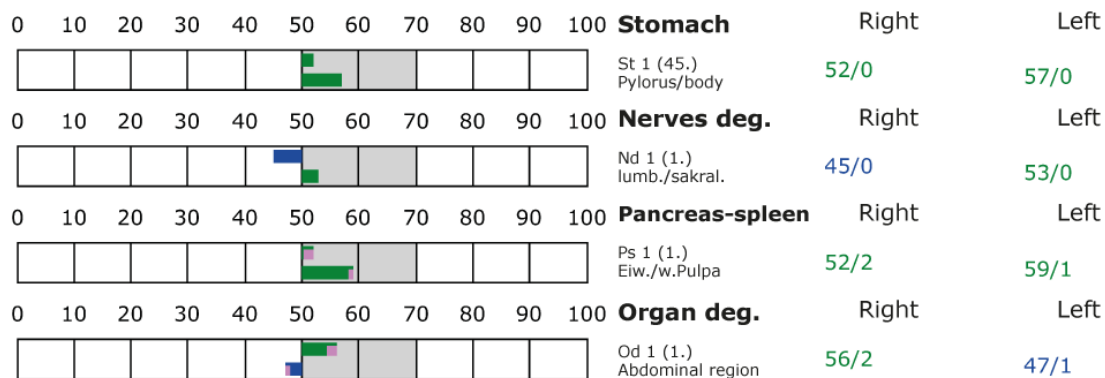
D: Degeneration (< 50 Skt.)

Standard values: (50-70 Skt.)

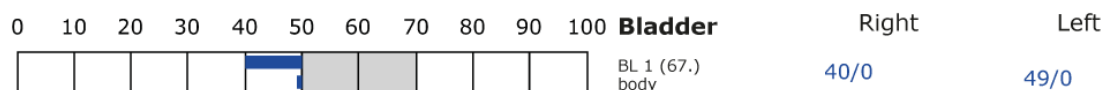
### Element: lu - sk - li - ct



### Element: st - nd - ps - od



### Element: bl - ly - ki - al





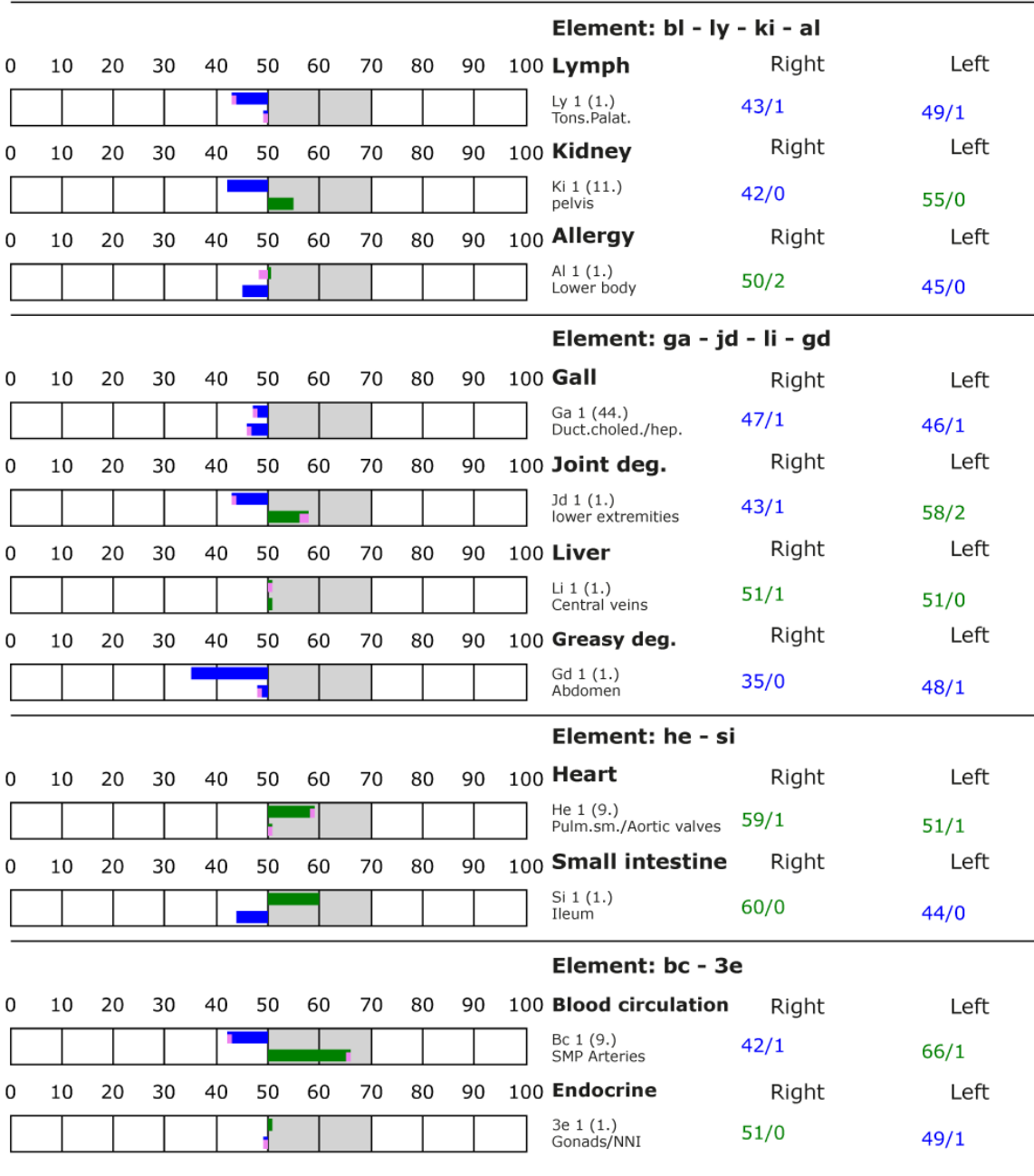
## BESA basic test

+++ : Indicator decline > 15 Skt.  
++ : Indicator decline 6-15 Skt.  
+ : Indicator decline 3-5 Skt.

T: Total inflammation (>89 Skt.)  
P: Partial inflammation (70-89 Skt.)

D: Degeneration (< 50 Skt.)

Standard values: (50-70 Skt.)





## BESA 2 testing BEFORE

### BESA 2 testing BEFORE with new snow

In the further course of the BESA test, the fresh snow, which was stored overnight in the freezer compartment of the refrigerator, was introduced into the measuring circuit and tested on the test person. During BESA testing, the snow was in a freezer bag.

**Goal:** Ermittlung to determine the response of the subject's meridian system within these strong EMSF sources. To determine the differences compared to the BESA 1 test BASIC BEFORE.

BESA test evaluation P72 1.0

from **28-12-2020 at 13:44 – 13:50** (6 Minutes) page 14 and 15

**result:** The measurement result indicated heavy energetic stress at the meridian endpoints and subsequently on the subordinate metabolic situation of the test person.

**72 % in the blue area**

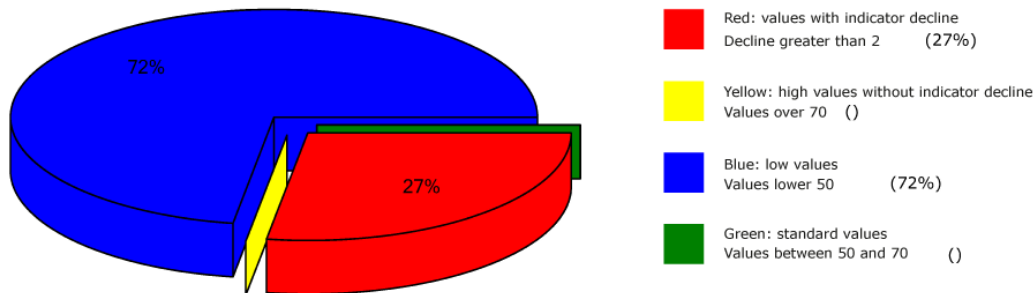
**27 % in the red area**

**1 % in the yellow transition area**

**Conclusion:** As the graphs show, many measurement points are in the degenerative blue area (energy deficiency). However, the picture is dramatic due to the now predominant measured values in the red area. The BESA test thus shows a significant deterioration of the subject's energetic situation compared to the BESA 1 test BASIC BEFORE. The red readings represent a total deregulation of these energy areas. This means that the energy system of the organism would seriously damage the test person in case of permanent influences of such or similar interference fields. For a balancing of these red readings or in other words: for a harmonization of the values, the energy system needs a strong positive impulse from outside. The comparisons of the BESA graphs confirm the change and the stressing influences by the tested fresh snow on the test person.



## Overview of BESA measuring



## BESA basic test

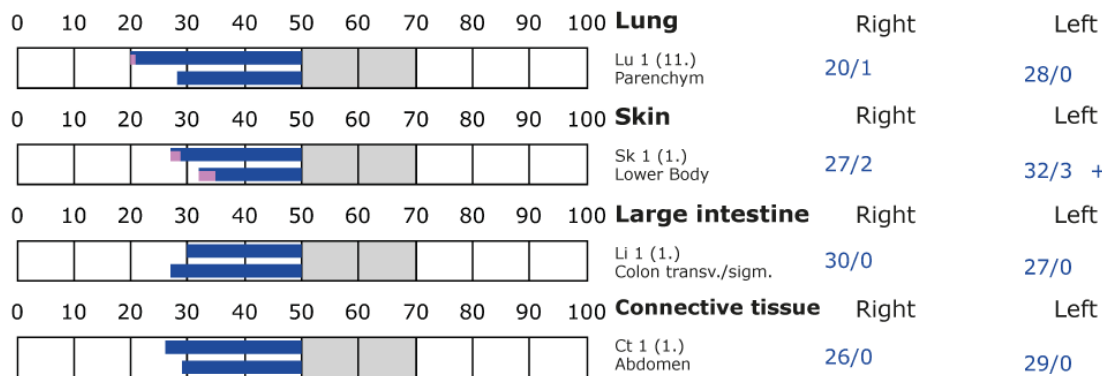
+++ : Indicator decline > 15 Skt.  
++ : Indicator decline 6-15 Skt.  
+ : Indicator decline 3-5 Skt.

T: Total inflammation (>89 Skt.)  
P: Partial inflammation (70-89 Skt.)

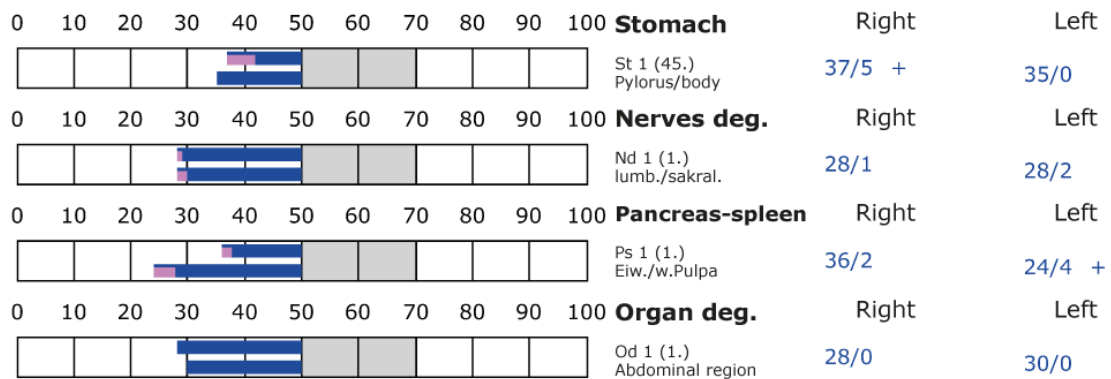
D: Degeneration (< 50 Skt.)

Standard values: (50-70 Skt.)

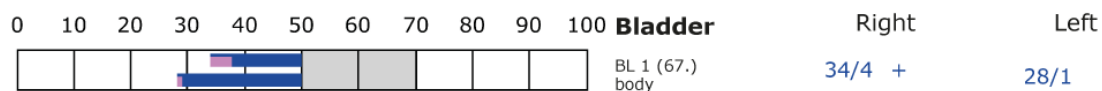
### Element: lu - sk - li - ct



### Element: st - nd - ps - od



### Element: bl - ly - ki - al







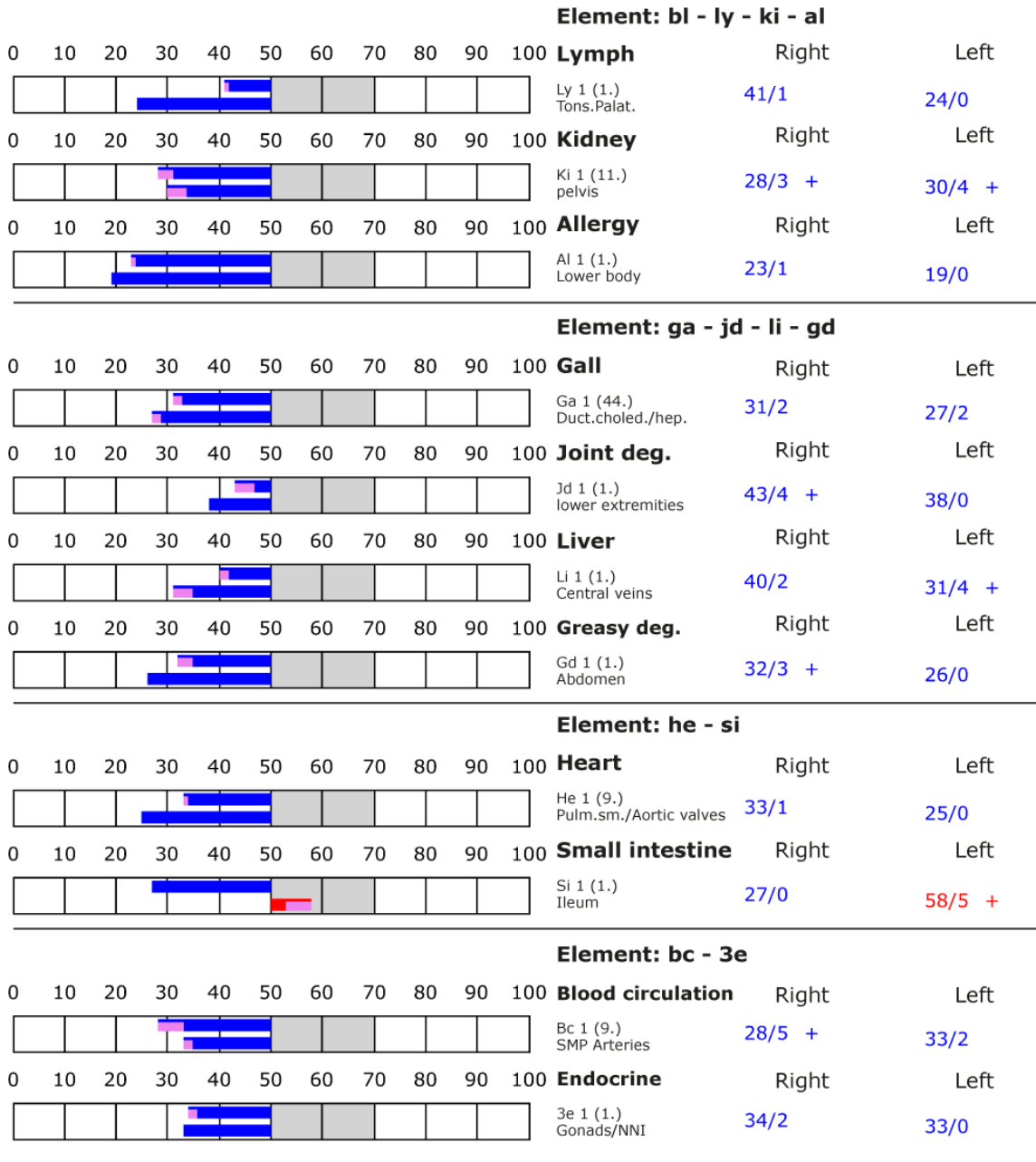
## BESA basic test

+++ : Indicator decline > 15 Skt.  
++ : Indicator decline 6-15 Skt.  
+ : Indicator decline 3-5 Skt.

T: Total inflammation (>89 Skt.)  
P: Partial inflammation (70-89 Skt.)

D: Degeneration (< 50 Skt.)

Standard values: (50-70 Skt.)





## BESA 3 testing AFTER

### **BESA 3 testing AFTER activation of the new snow in the „Leela Quantum Bloc“**

In the further BESA testing process, the new snow that is in the freezer bag is placed in the Leela Quantum Block for 10 minutes. Afterwards, the fresh snow, which is still in the freezer bag, is removed from the Leela Quantum Block and placed in the measuring circuit and tested on the test person.

**Goal:** To determine the reaction of the subject's meridian system when the fresh snow activated by the "Leela Quantum Block" acts on the subject? To determine the differences compared to BESA 1 and 2 testing BEFORE.

BESA test evaluation P72 1.0

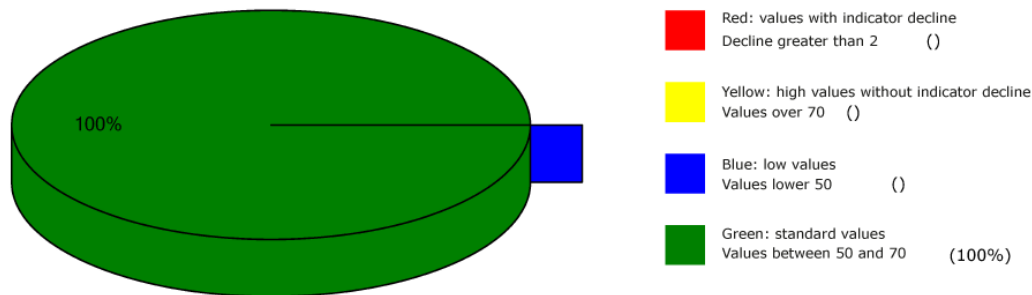
from **28-12-2020 at 13:51 – 13:58** (7 Minutes) page 17 and 18

**result:** The measurement result shows significant improvements in the meridian endpoints or in the energetic state of the test person.

**100 % in the green area**

**Conclusion:** As the graphs show, after introducing the new snow into the "Leela Quantum Block", all measurement points are in the green, optimal and harmonized range (balanced energy system). The BESA test results in a significant improvement of the energy situation in the meridian system of the test person compared to the BESA 1 and BESA 2 tests BEFORE. It is shown that the "Leela Quantum Block" is able to give the red readings (total deregulation) detected in the BESA 2 testing BEFORE a necessary impulse for harmonization (neutralization) into a life-supporting range. The comparisons of the BESA graphs confirm the change and resolution of the stressed (red) acupuncture points on the meridian system of the subject.

## Overview of BESA measuring



## BESA basic test

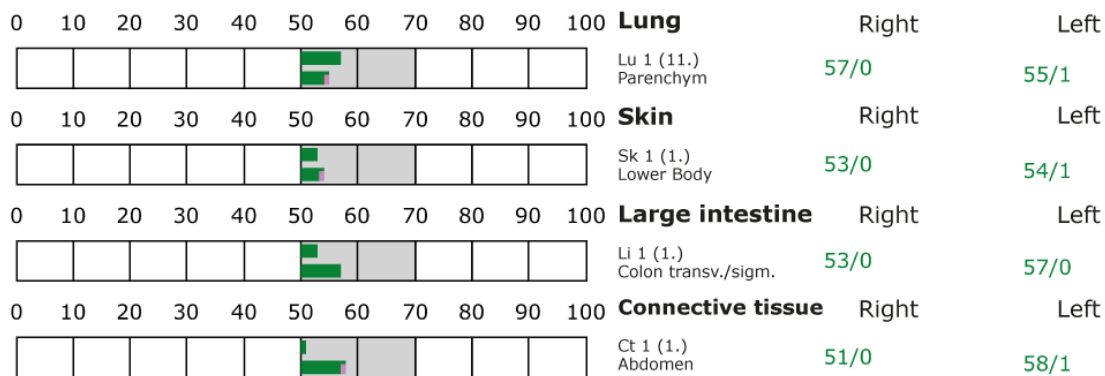
- +++ : Indicator decline > 15 Skt.
- ++ : Indicator decline 6-15 Skt.
- +: Indicator decline 3-5 Skt.

T: Total inflammation (>89 Skt.)  
P: Partial inflammation (70-89 Skt.)

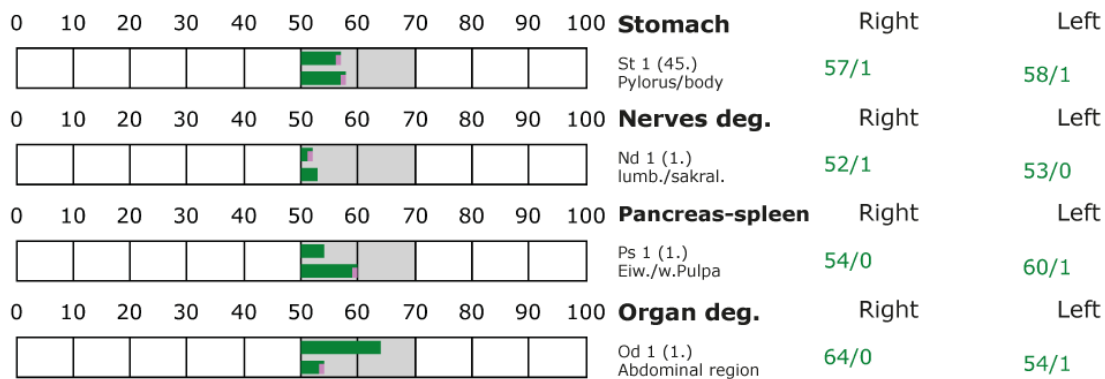
D: Degeneration (< 50 Skt.)

Standard values: (50-70 Skt.)

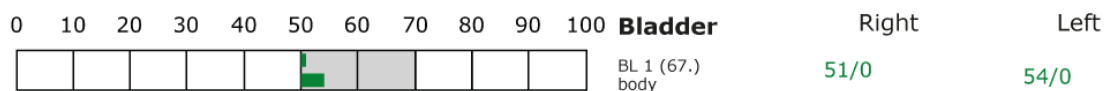
**Element: lu - sk - li - ct**



**Element: st - nd - ps - od**



**Element: bl - ly - ki - al**





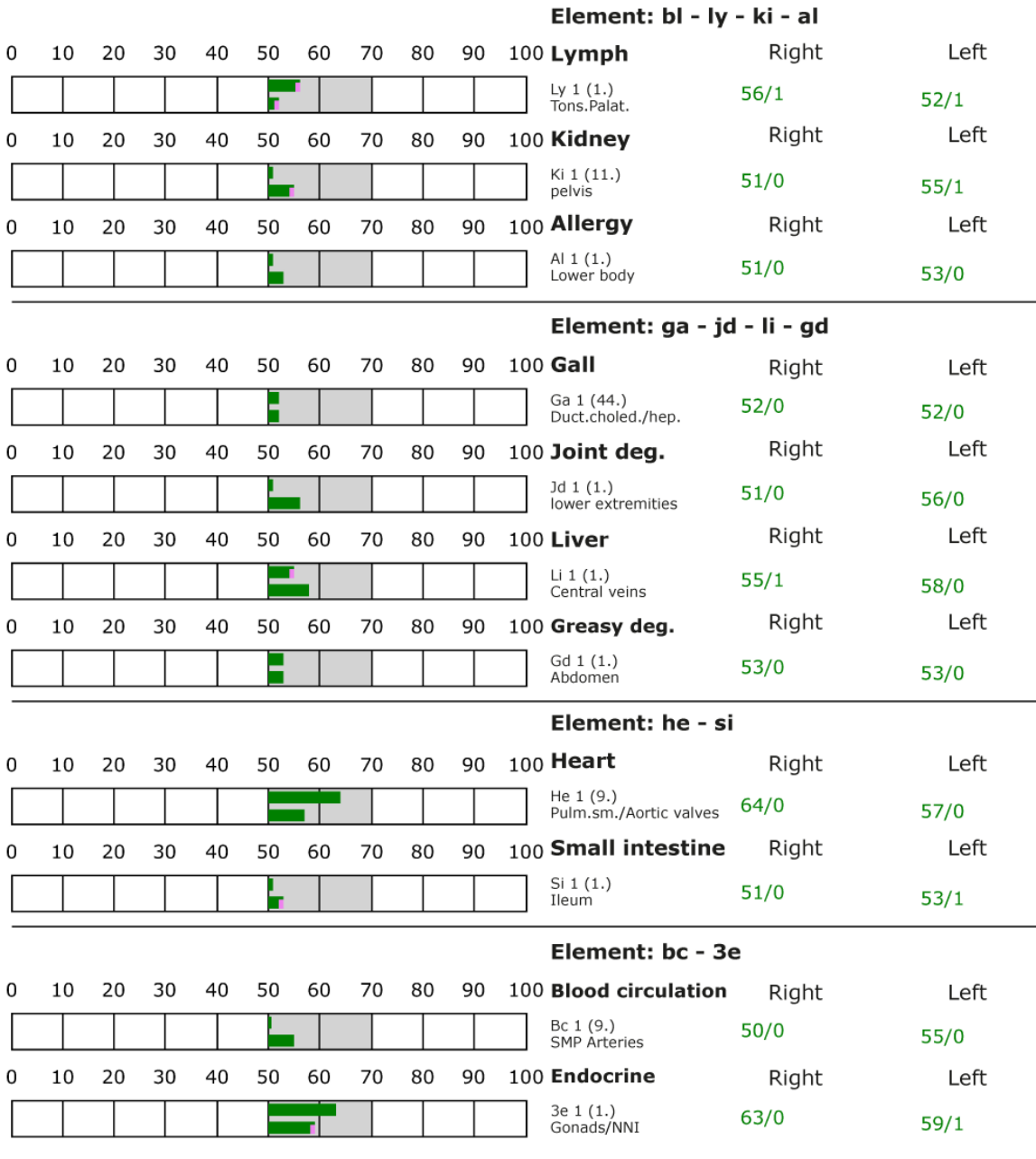
## BESA basic test

+++ : Indicator decline > 15 Skt.  
++ : Indicator decline 6-15 Skt.  
+ : Indicator decline 3-5 Skt.

T: Total inflammation (>89 Skt.)  
P: Partial inflammation (70-89 Skt.)

D: Degeneration (< 50 Skt.)

Standard values: (50-70 Skt.)

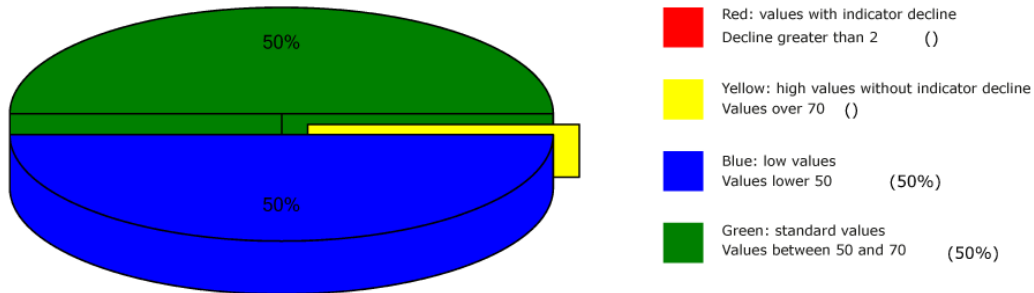




## All BESA tests at a glance

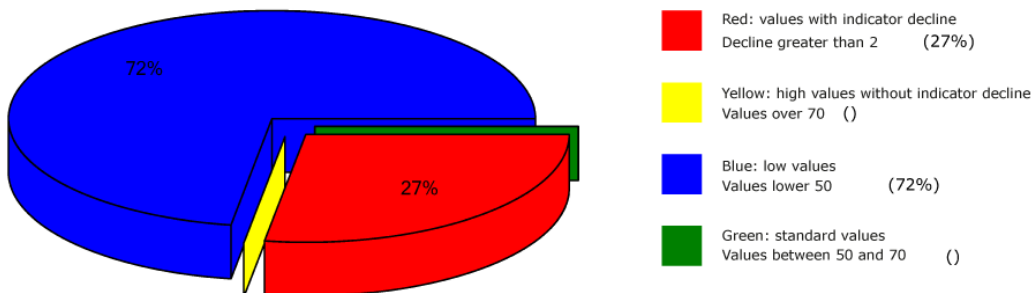
### BESA BASIC Testing

#### Overview of BESA measuring



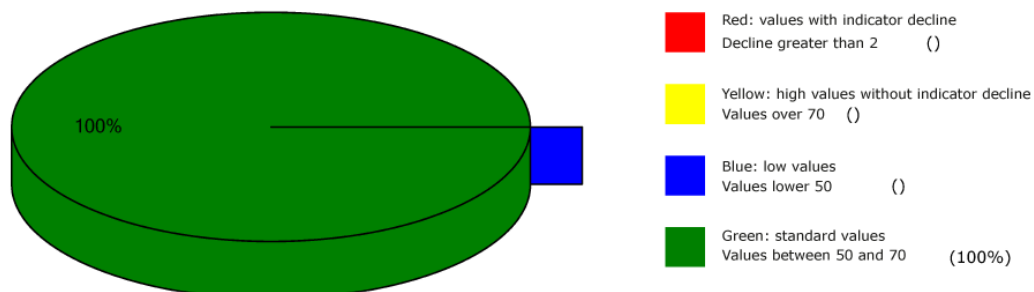
### BESA BEVORE Testing the new snow

#### Overview of BESA measuring



### BESA AFTER Testing – after activation with the „Leela Quantum Bloc“

#### Overview of BESA measuring





## General information about the test result

The human being or all biological objects represent a kind of receiving antenna for environmental information. This is because the life of man and all other biological objects depends fundamentally and exclusively on environmental information. Our organism is biologically very sensitive where natural information (fields) are located or where they are subject to interactions and fluctuations. **For this reason, detected informative electromagnetic interference fields are biologically highly relevant. Any reduction or transformation of these interfering fields (ideally to 100 percent) is biologically very important, often even decisive for life.**

These informational disturbances from our environment are only compatible with life if they can be readjusted to a natural fluctuation tolerance. Disturbances, problems, blockades, disharmonies in the biological control circuit of man find their causes in such disturbing information influences.

**Neutralizing or harmonizing effects could be proven in this detailed project P72 1.0 to determine the effect of the "Leela Quantum Bloc".**

The "Leela Quantum Bloc" was able to neutralize the biologically adverse effects and effects determined on the test person in the project.

**The decisive ability of the "Leela Quantum Bloc" to neutralize and harmonize the life-endangering information or tested stress factors in this detailed project P72 1.0 and to transform them into biological life-promoting goodness is proven with this project.**

## Authorized Summary

The BESA tests carried out by IFVBESA on the energetic and physical effectiveness of the "Leela Quantum Bloc" have clearly shown that it is able to neutralize or harmonize biologically significant stress factors on the energetic system of the test person. By means of the bioenergetic system analysis, the effect of the above-mentioned stress factors on the test person, his meridian system and his energetic-biological control circuits was questioned and systemically tested on the bioenergetic level. The BESA tests BEFORE - AFTER show significant changes at the tested acupuncture points or at the meridian system. The measurement data as well as their key figures impressively confirm on the one hand the stress caused by the tested interference fields on the organism of the test person and on the other hand clarify how after application of the "Leela Quantum Bloc" the deregulating energies are transformed into body-immanent and biocompatible energies. From a holistic point of view, it can be assumed that the positive effect on the test person also occurs in other people.





Internationaler Fachverband für BESA | ZVR Nr. 975047937  
Hauptstraße 1, A 4861 Kammer-Schörfling am Attersee | Österreich - Austria  
Tel.: +43 – 664 – 73152899 | E-Mail: [info@ifvbesa.at](mailto:info@ifvbesa.at)

The fact that the positive influence of the "Leela Quantum Bloc" is actually possible with high precision is clearly shown by the BESA-Before-After comparison. All measured values improved significantly from the mostly 100-percent blue measuring range to the green mostly 50-second range (scale value), i.e. the range of optimal measured values. This means: an optimal regulation dynamic has taken place. Here, in the sense of the IFVBESA, one can clearly speak of an optimal, significant improvement of the body's own energy situation.

**Result:** The test person was brought into contact with heavily loaded frequencies (information) during the BESA-NACHHER testing. In contrast to the BEFORE tests, in which the "Leela Quantum Bloc" was not used, positive measurement results were found throughout, indicating that neutralization or harmonization had taken place. The regulatory dynamics developed into an optimal effective range.

**By proving the bioenergetic effectiveness of the "Leela Quantum Bloc" in this detailed project P72 1.0, the requirements for obtaining a BESA seal of approval from the International Professional Association for BESA were met.**