



IFVBESA

Information is crucial

P72 4.2 BESA-Detailproject
Family Home & Quantum Entanglement
Leela Quantum Bloc



Projekt P72 4.2 to the BESA expert opinion

bioenergetic System analysis
within the framework of the BESA seal of approval on the effectiveness
of the product „Leela Quantum Bloc“
in the Family Home & Quantum Entanglement
also referred to as "test object" in the project.





Internationaler Fachverband für BESA | ZVR Nr. 975047937
Hauptstraße 1, A 4861 Kammer-Schörfling am Attersee | Österreich - Austria
Tel.: +43 – 664 – 73152899 | E-Mail: info@ifvbesa.at

Client

Firma Leela Quantum Tech, LLC
Attn: Eleonora Goldenberg
1421 LUISA STREET, STE G
SANTA FEE, NM 87505
USA

Project participants:

Project leader: Wolfgang Hans Albrecht, präsidant and scientific director of the IFVBESA

Test person: Eva Krankl, Vicepräsident and deputy scientific director of the IFVBESA

Respondent: 8 anonymous subject in the (Detail) Projects P72 1.0, P72 2.0, P72 3.0, P72 4.0 as well P72 4.1 and P72 4.2

These break down as follows:

- 1 Respondent at P72 1.0 - New-Snow (chemtrails)
- 2 Respondent at P72 2.0 - Automatic-clocks in the „Leela Quantum Bloc“
- 1 Respondent at P72 3.0 – Sweater at quantum entanglement via „Leela Quantum Bloc“
- 5 Respondents at P72 4.0 - family home + Leela Quantum Bloc“
- 3 Respondents at P72 4.1 - family home without „Leela Quantum Bloc“
- **3 Respondents at P72 4.2 - family home + „Leela Quantum Bloc“ with quantum entanglement**

other participants: none

Project location:

Location of the IFVBESA, Hauptstraße 1, A 4861 Kammer/Schörfling

Date: 27.12.2020 until 07.02.2020

Project duration: 42 Days



Internationaler Fachverband für BESA | ZVR Nr. 975047937
Hauptstraße 1, A 4861 Kammer-Schörfling am Attersee | Österreich - Austria
Tel.: +43 – 664 – 73152899 | E-Mail: info@ifvbesa.at

Table contents

BESA-legend for the interpretation of the BESA measurement results	5
Basics of the research project creation P72	6
Research funding services of the IFVBESA - BESA- reference tests	7
Research project description (detailed project)	8
Test procedure	10
All BESA-tests at a glance	29
General information about the test result	30
Authorized Summary	30

Important notes:

The client owns the right to exploit this project report. Irrespective of this, this report represents intellectual property of IFVBESA as the contractor. The contractor is entitled to use this project report for other purposes if this does not violate the client's data protection or confidentiality. On the other hand, the project report, with the exception of the "authorized abridged version", may not be changed or passed on in abridged form without the consent of the IFVBESA. The order for this project refers to bioenergetically measurable values and their interpretation according to the guidelines of BESA or the IFVBESA. The maintenance of the quality of the tested products as well as their regular control is the task and responsibility of the client. Investigation of the manufacture, mechanism of action or interpretations of the Client's products to third parties is not the responsibility or task of the Contractor. Video recordings may be made only with the permission of IFVBESA.



BESA-legend for the interpretation of the BESA measurement results

The measured value of 50 on the tested meridian represents an optimal energetic state in this organ or its subordinate and superordinate levels. Also measured values in the range of 50 to max. 70 still count as a neutral and balanced energy status. The organism is able to regulate irritations of the system (wrong environmental signals) very well.

Measured values above 70 to 100 represent the inflammatory range or a so-called energy surplus as a reaction to the irritations of the system by corresponding environmental signals. After reaching the maximum values, the energy state tips into the degenerative (blue) range.

Measured values from below 50 to around 0 represent the so-called degenerative measuring range or a lack of energy as a reaction to the stimulation of the system by corresponding environmental signals.

Measured values represented by a so-called pointer drop of more than 3 scale lines indicate total deregulation. The influence of certain environmental signals then leads to such strong system overloads, which can only be brought into harmonization by corresponding new signals.

BESA key figures:

up to 0,79	very deep energetic regulatory disorder (SSD) energy deficiency
0,8 to 1,19	strong energetic regulation disturbance (SD) degeneration/energy deficiency
1,2 to 1,59	energetic regulation disorder (D) degeneration/energy deficiency
1,6 to 1,99	degenerative transition area (DÜ)
2,0 to 2,39	optimal regulation (OR)
2,4 to 2,79	in the regulation (R)
2,8 to 3,19	partial inflammation = regional energy excess (PE)
from 3,2	total inflammation = strong general energy surplus (TE)



Basics of the research project creation P72

The international professional association for bioenergetic system analysis was commissioned by the company Leela Quantum Tech LLC to test or prove the effect of the test object "Leela Quantum Bloc" by means of bioenergetic system analysis (BESA). The testing took place independently of the subjective feeling of all test persons.

Description of the "Leela Quantum Bloc" by the client:

"Leela Quantum Bloc" is a quantum space generator and concentrator, which is highly concentrated inside the device between the plates. At the same time, the Quantum Bloc has an energetic extension of more than 100 meters, which however does not represent the concentrated quantum space, but a positive energetic quantum field. This quantum field neutralizes and harmonizes on the one hand negative frequencies and vibrations and on the other hand provides overall positive, inviting and peaceful energy. In the quantum space itself (between the plates), each object that is placed there is energetically restructured, optimized and charged with quantum energy within 60 seconds. It can be said from previous tests that any object that has been in the "Leela Quantum Bloc" becomes "better". Whether that is water, food, jewelry, technical devices, etc. The essential difference of the "Quantum Bloc" to other "quantum energy producing devices" is that the Quantum Bloc works on more than one level of consciousness (and thus on this level one-dimensional, figuratively represented like a flat field). The Quantum Bloc works on more than 50 levels at the same time and is therefore a multidimensional quantum space in every respect. This has the advantage, also among others compared to other devices, that even if the energy is increased, there is no imbalance or negative energetic pressure. This is especially important for users whose organism cannot yet handle such higher energy levels. Furthermore, the "Leela Quantum Bloc" needs only about 30 seconds to transfer a frequency in it from one object to another. We have also been able to observe this in 20 seconds, but officially advise a minute (60 seconds).

The client assumes that the Quantum Bloc can produce the following effects:

- charge any object with comprehensive, positive quantum energy.
- For clarification: energies are always neutral. With "positive" the client wants to refer to the positively affecting energy of the objects in the room such as people, animals, plants, etc.
- copy any frequencies within only 1 minute
- harmonizing energy field for home, workplace, car, etc.
- harmonization of any negative frequencies
- helps to dive deeper into one's own consciousness (whether in meditation, daily life, "retrieving" information, etc.)



- optimizes food, water and all other substances
- positive effect on human cells and body (physical and energetic). For this purpose it is enough just to be in the expanded field of the Quantum Bloc. If one part of the body is in the concentrated quantum space, automatically not only the cells of this one part of the body, but the cells of the whole body are intensively touched.
- neutralizes unwanted "dark entities" or keeps them away due to the high light vibration or "brings" them into the light
- cleanses the aura
- supports positive affirmations within the framework of legality and also accelerates their manifestation within the framework of legality

Research funding services of the IFVBESA - BESA- reference tests

General information about this project:

In this detailed project P72 4.2, the aim is to perform quantum physical activation of a building and its co-inhabitants over a distance of about 30 kilometers in the "Leela Quantum Bloc" and to question its effectiveness with BESA tests. For this purpose, the possibility of so-called quantum entanglement is applied. For this process, a photograph of the respective test person, taken immediately beforehand by the test persons, is placed in the "Leela Quantum Bloc" for 24 hours. The photograph is simply marked with the date of activation. Via the morphogenetic field (quantum field) the photograph of the respective test person is connected with the physical original. For this project 3 test persons were selected, who were already available in the project P72 4.0. Via the so-called quantum entanglement, the proof of effect of the "Leela Quantum Bloc" against certain stress factors in the environment of a 2-family house including 2 of its inhabitants shall be proven. For this project the house as well as 2 further test persons, thus together 3 test persons were selected. Subjects 1-3 are the same as those from project P72 4.0, while subject 3 is the house itself. For subjects 2+3 a so-called surrogate is used.

What is a surrogate: This is a substitute person who stands for the respective proband. Example: A rabbit has fingers and toes in a different sense than a human. Otherwise it has all organs like the human being. In this case, the surrogate takes over the function of the rabbit during BESA testing. During the testing of the house it behaves similarly. Here, for example, the heart meridian for the heart of the house is not tested (the house does not have a heart like the human being) but the relation of the heart of the test person to the house. In other words: how does the heart meridian (viewed on the test person) behave in the direct environment of the house?

The client assumes that the photographs of the respective test subjects located in the "Leela



Quantum Bloc" are quantum-physically charged and cause a change in the energy system of the tested subjects, regardless of how far away they are. In this project, the distance between the "Leela Quantum Block" and the test subjects is about 34 km.

In this project, the mode of action of the "Leela Quantum Bloc" is to be demonstrated via the process of quantum entanglement. Possibly burdening interference fields should be able to be harmonized informatively and their frequencies should be transformed into positive, life-promoting vibrations. This is tested via this BESA project on the test persons, who are additionally confronted with EMSF (electromagnetic interference fields). These include in this project: W-Lan, Bluetooth, Smartmeter as well as the radiation of mobile phones of the generation 4G and 5G. This is tested on the test persons via this BESA project.

The "Leela Quantum Bloc" was tested according to the requirements of the client within the framework of the applicable conditions of the IFVBESA for the award of quality seals. Depending on the significance of the test results, seals of approval are awarded in 3 categories, taking into account all the tests of a project.

The client and developer of the "Leela Quantum Block" assumes that it is capable of compensating for the stresses and deficiencies that may have been presented to the test person via this project, as well as replacing the associated negative states with positive states. Whether the "Leela Quantum Bloc" is capable of doing this is to be investigated in the following commissioned BESA tests on test subjects.

To the general information of the information transfer:

The information transfer takes place from the hyperspace of the test object to the hyperspace of biological objects (humans, animals, plants). From there, the information reaches the reference space or the energy space via so-called interaction channels. This is a union of, among other things, all organs and energy forms in the biological object. There, the information of the program can dynamically materialize and thus change current states. The changes can appear in the form of neutralization or harmonization of disturbances, dissolution of problems, blockades and disharmonies.

Research project description (detailed project)

The reason for the tests is to prove the functionality of the "Leela Quantum Bloc" through test results obtained by testing the subjects for stress and deficiency conditions in the environment of the 2-family house in order to significantly prove and compare their reactions without the "Leela Quantum Bloc" and with the "Leela Quantum Bloc".

- The BEFORE measurements are made without the "Leela Quantum Bloc".



- The AFTER measurements are performed with the "Leela Quantum Bloc" - quantum entangled.

The question in the AFTER measurement is: "Is the "Leela Quantum Bloc" suitable and able to harmonize or neutralize the so perceived and possibly negative effects in the environment of the residential building on the organism of the test person via quantum entanglement?"

The correspondingly designed tests should provide information about this by comparing the preliminary measurements without the "Leela Quantum Bloc" with the test results of the follow-up measurements carried out using the "Leela Quantum Bloc".

The aim of the development team of the company Leela Quantum Tech LLC is to determine whether the test object, the "Leela Quantum Bloc", as noted in the product description, is suitable for neutralizing the deficiency symptoms and the associated disturbances in the meridian system of the test person via the quantum entanglement in the "Leela Quantum Bloc".

Conditions:

The BESA tests are performed in the premises of the IFVBESA under laboratory conditions, at room temperature 20° Celsius, on natural wood flooring. The test persons are deswitcht (made testable) before the BESA tests or the test possibilities are questioned on the respective test persons. All BESA field testing will be conducted according to the IFVBESA conditions for field testing.

- Pos.1** BESA testing BEFORE + EMSF on 2 subjects
- Pos.2** BESA testing AFTER all subjects activated by the "Leela Quantum Bloc" via quantum entanglement including EMSF
- Pos.3** Evaluation of the results in the detailed project as well as summary in the corresponding expert's report according to sample

Procedure and specifications for the implementation

1. the **test persons** are brought into contact **with the EMSF depending** on the project, whereby the sequence discussed with the client is considered as a specification and is adhered to accordingly. In order to be able to determine the current energy status, the measuring points mentioned under point 1 are measured in the same order and for the same duration during each test. The results are determined exactly according to the BESA specifications and documented via the BESA graphs.

2. **Activation of the test subject**

For the activation of the test subjects, these are brought in as a photograph for 24 hours in the "Leela Quantum Bloc" (quantum entanglement). This corresponds to the specifications of the client. The measuring points mentioned under point 1 are measured



Internationaler Fachverband für BESA | ZVR Nr. 975047937
Hauptstraße 1, A 4861 Kammer-Schörfling am Attersee | Österreich - Austria
Tel.: +43 – 664 – 73152899 | E-Mail: info@ifvbesa.at

in the same order and time duration to determine the current energy state. The results are determined exactly according to the BESA specifications and documented via the BESA graphs.

Test procedure

BESA 1 Testing BEFORE - subjects and EMSF

In the further BESA test procedure, the consequences of the EMSF are tested on the subjects. The question is: How does the meridian system react? How does the energetic status change when confronted with the EMSF? What are the differences in each case compared to BESA 1 BASIC testing BEFORE?

BESA 2 Testing AFTER CHHER – effect of the photographs in the "Leela Quantum Bloc" on the physical subjects (quantum entanglement) + EMSF?

In the third BESA test, the subjects charged as photographs in the "Leela Quantum Bloc" are tested (quantum entanglement). Now the question is: How does the meridian system of the subjects react to the activation of their energy system via the "Leela Quantum Bloc" quantum entangled with simultaneous activation of the EMSF? What are the results compared to the BESA 1 and 2 tests BEFORE?



Proband 1

BESA 1 Testing BEFORE

BESA 1 Testing BEFORE - subject + EMSF

In the first BESA test run, the EMSFs are tested on subject 1. For this purpose, wi-fi, smart meter, Bluetooth, cell phone of generation 4G and 5G are introduced into the measurement circuit. In addition, a connected cell phone is placed on the left thigh of the test person. Thus, it is actively in the BESA measurement circuit.

Goal: To determine the response of the subject's meridian system within these strong EMSF sources as a baseline test and comparison against subsequent BESA tests.

BESA Test evaluation P72 4.2

from **11-01-2021 at 16:21 – 16:29** (8 Minutes) page 12 and 13

result: The measurement result indicated severe energetic stress at the meridian acupuncture endpoints and subsequently on the subordinate metabolic situation of the test person.

82 % in the blue area

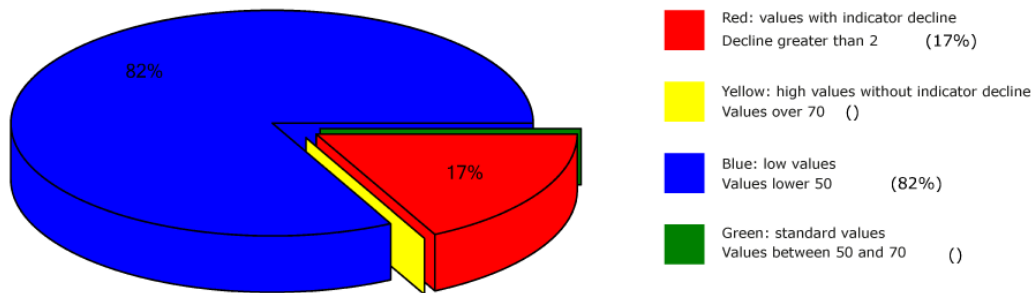
17 % in the red area

1 % in the yellow transition area

Conclusion: As the BESA graphs show, many measurement points are in the degenerative blue area (energy deficiency). However, the picture is dramatic because of the many readings in the red area. The red readings represent a total deregulation of these energy areas. This means that the energy system of the organism would seriously damage the test person in case of permanent influences of such or similar interference fields. For a balancing of these red readings or in other words: for a harmonization of the values, the energy system needs a strong positive impulse from outside. The comparisons of the BESA graphs confirm the stressful influences of the EMSF on the test person.



Overview of BESA measuring



BESA basic test

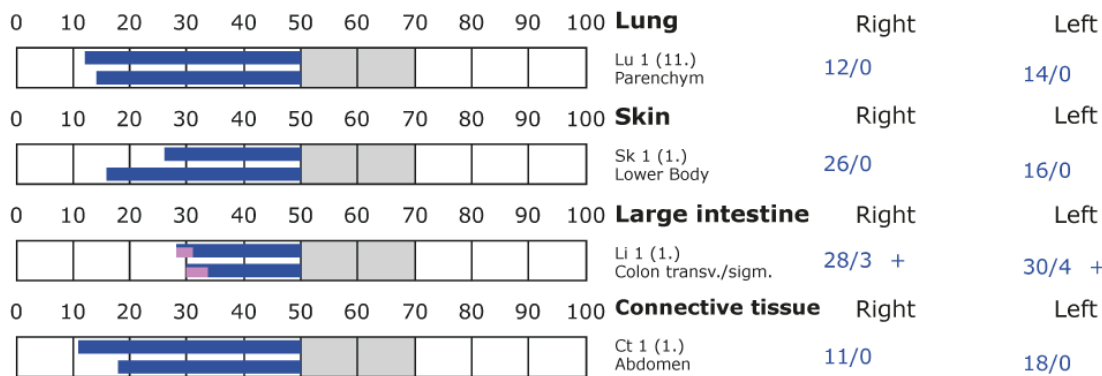
+++ : Indicator decline > 15 Skt.
++ : Indicator decline 6-15 Skt.
+ : Indicator decline 3-5 Skt.

T: Total inflammation (>89 Skt.)
P: Partial inflammation (70-89 Skt.)

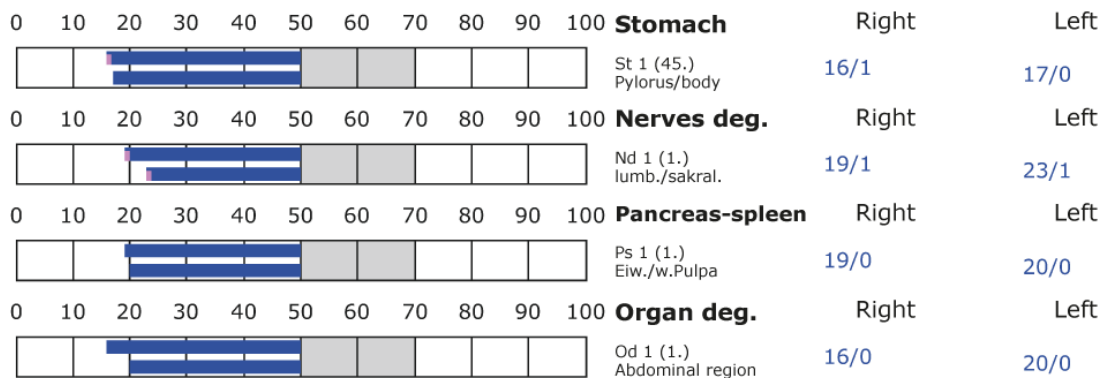
D: Degeneration (< 50 Skt.)

Standard values: (50-70 Skt.)

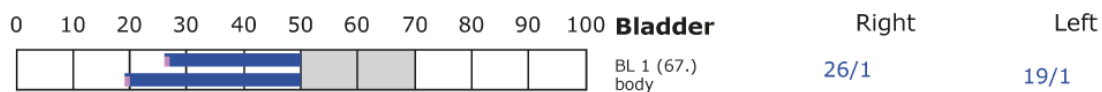
Element: lu - sk - li - ct



Element: st - nd - ps - od



Element: bl - ly - ki - al





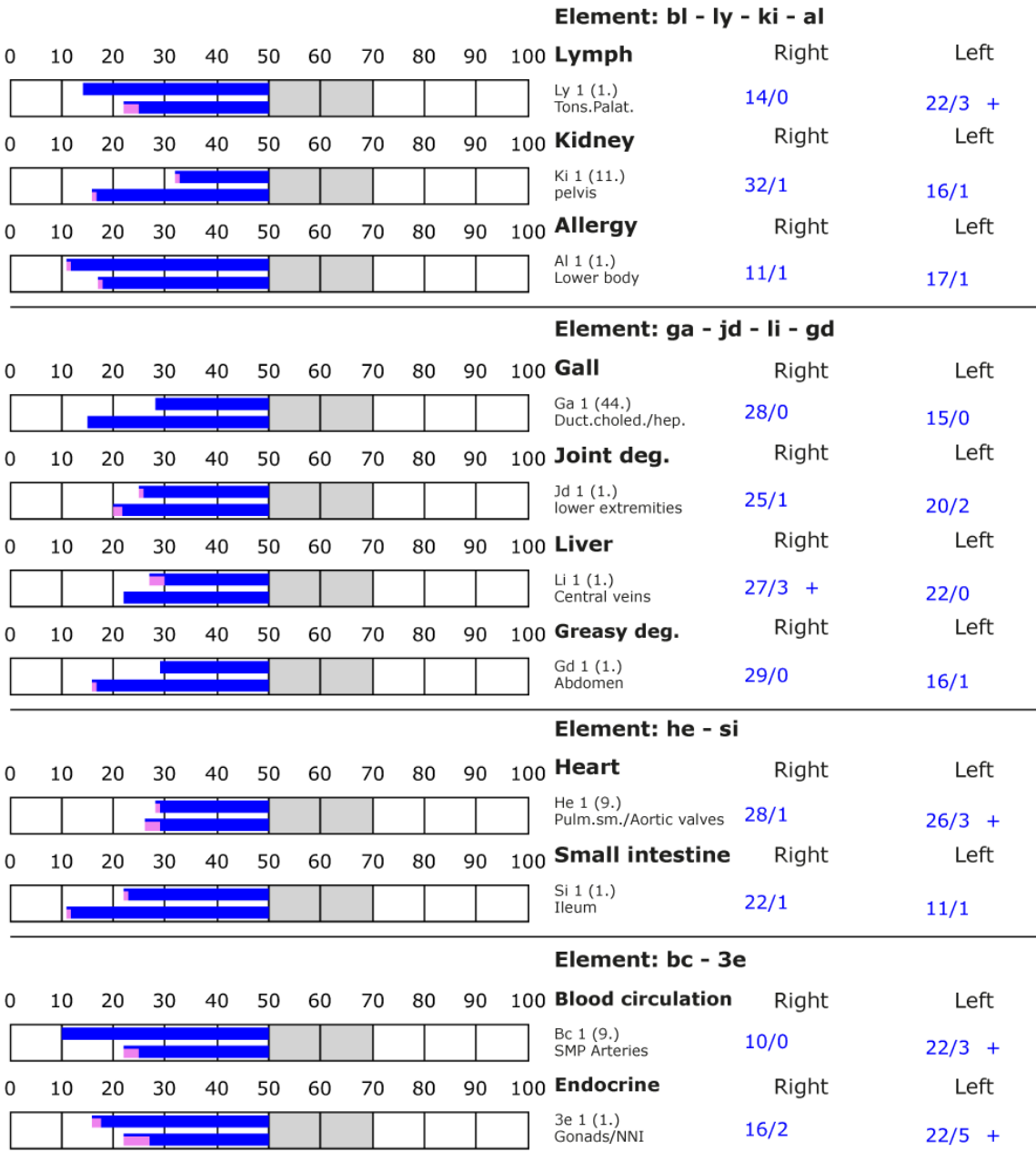
BESA basic test

+++ : Indicator decline > 15 Skt.
++ : Indicator decline 6-15 Skt.
+ : Indicator decline 3-5 Skt.

T: Total inflammation (>89 Skt.)
P: Partial inflammation (70-89 Skt.)

D: Degeneration (< 50 Skt.)

Standard values: (50-70 Skt.)





BESA 2 Testing AFTER

BESA 2 Testung NACHHER – subject after activation via his photograph in the „Leela Quantum Bloc“ (Quantum Entanglement)

The subject's photograph is encoded with the date (01/22/2021) and quantum charged for 24 hours in the "Leela Quantum Bloc". 1 day later, BESA testing is performed on the subject, who is located about 30 km from the „Leela Quantum Bloc“. In the further BESA test course, again, as in the BESA test BEFORE, all sources of EMSF are activated and the BESA test is performed on subject 1. In this BESA test, too, the connected cell phone is in direct contact with the test person and thus actively in his measurement circuit.

Gola: To determine the reaction of the meridian system to the effect of the subject's photograph activated in the "Leela Quantum Bloc"? How does the subject react to the activation of his photograph? Determination of the differences compared to the BESA 1 tests BEFORE.

BESA Test evaluation P72 4.2

from **23-01-2021 at 11:08 – 11:13** (5 Minutes) page 15 and 16

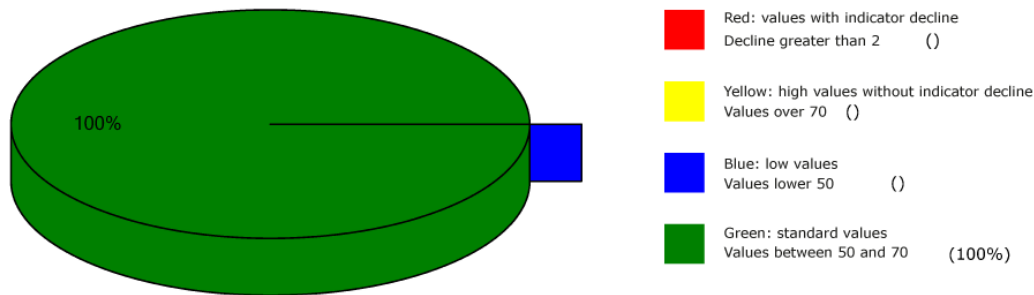
result: The measurement result shows significant improvements at the meridian endpoints or at the energetic state of the test person.

100 % in the green area

Conclusion: As the BESA graphs show, after activation of the subject's photography in the "Leela Quantum Bloc", all measurement points on the subject are in the green, optimal and harmonized range (balanced energy system). The BESA testing shows a significant improvement of the energy situation in the meridian system of the test person compared to the BESA 1 testing BEFORE. It is shown that the "Leela Quantum Bloc" is able, even over a distance of more than 30 km (quantum entanglement), to give the red readings detected in the BESA 1 testing BEFORE (total deregulation) a necessary impulse for harmonization (neutralization) into a life-supporting range. The comparisons of the BESA graphs confirm the change and resolution of the stressed (red) acupuncture points on the meridian system of the subject.



Overview of BESA measuring



BESA basic test

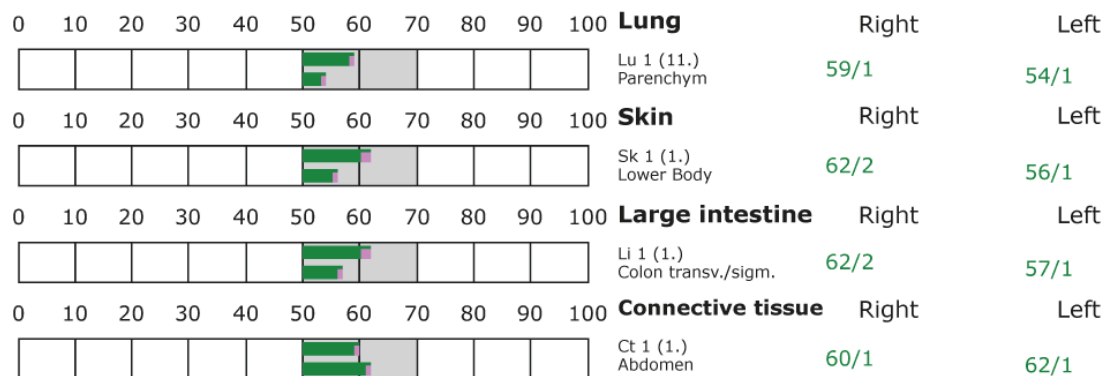
+++ : Indicator decline > 15 Skt.
++ : Indicator decline 6-15 Skt.
+ : Indicator decline 3-5 Skt.

T: Total inflammation (>89 Skt.)
P: Partial inflammation (70-89 Skt.)

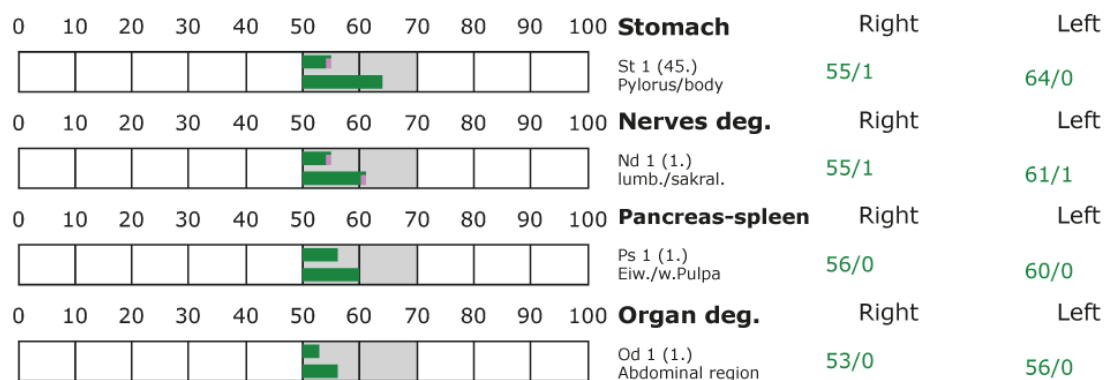
D: Degeneration (< 50 Skt.)

Standard values: (50-70 Skt.)

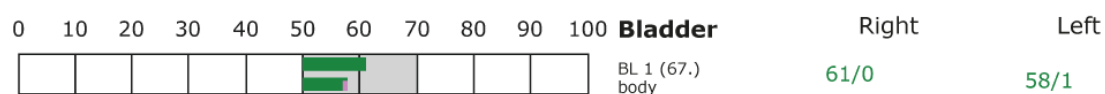
Element: lu - sk - li - ct



Element: st - nd - ps - od



Element: bl - ly - ki - al





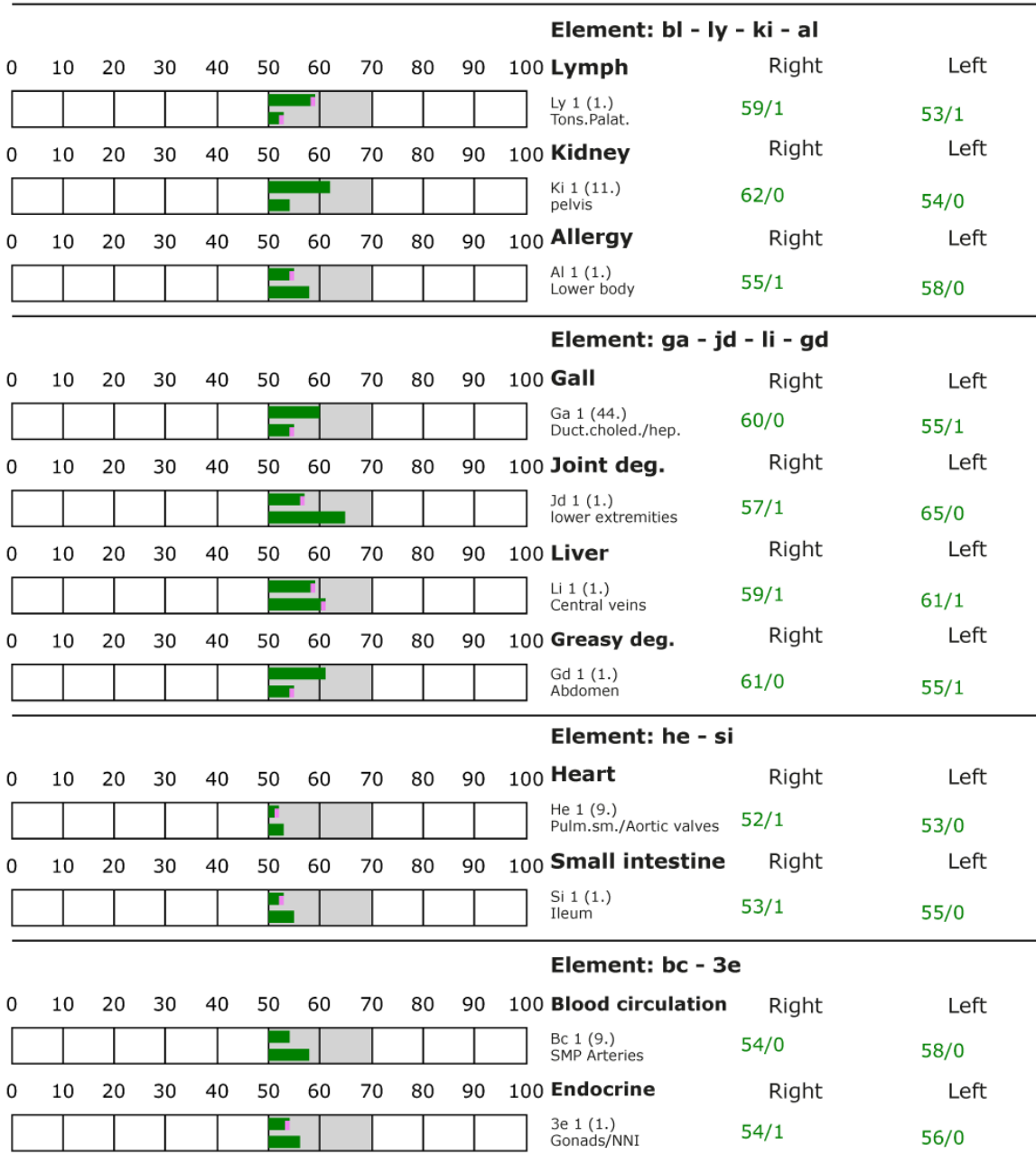
BESA basic test

+++ : Indicator decline > 15 Skt.
++ : Indicator decline 6-15 Skt.
+ : Indicator decline 3-5 Skt.

T: Total inflammation (>89 Skt.)
P: Partial inflammation (70-89 Skt.)

D: Degeneration (< 50 Skt.)

Standard values: (50-70 Skt.)





Proband 2

BESA 1 Testing BEFORE

BESA 1 Testing BEFORE – subject 2 + EMSF

The first BESA test course is concerned with the BESA tests of EMSF on subject 2, whereby wi-fi, smart meters, Bluetooths, cell phones of generation 4G and 5G are introduced into the measurement circuit. In addition, a connected cell phone is placed in the immediate vicinity of the test person (rabbit Paul). Thus, it is actively in the BESA measurement circuit. Mrs. Eva Krankl acts as a surrogate for the hare Paul.

Goal: Determination of the reaction of the meridian system of the test person within these strong EMSF sources. To establish the basis against all subsequent BESA tests.

BESA Test evaluation P72 4.2

from **11-01-2021 at 16:41 – 16:46** (5 Minutes) page 18 and 19

result: The measurement result indicated severe energetic stress at the meridian acupuncture endpoints and subsequently on the subordinate metabolic situation of the test person.

92 % in the blue area

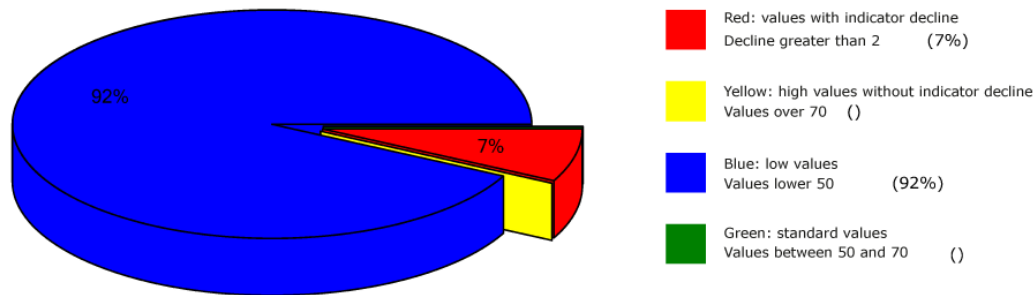
7 % in the red area

1 % in the yellow transition area

Conclusion: As the BESA graphs show, many measurement points are in the degenerative blue area (energy deficiency). However, the picture is dramatic because of the many readings in the red area. The red readings represent a total deregulation of these energy areas. This means that the energy system of the organism would seriously damage the test person in case of permanent influences of such or similar interference fields. For a balancing of these red readings or in other words: for a harmonization of the values, the energy system needs a strong positive impulse from outside. The comparisons of the BESA graphs confirm the change and the stressful influences of the EMSF on the test person.



Overview of BESA measuring



BESA basic test

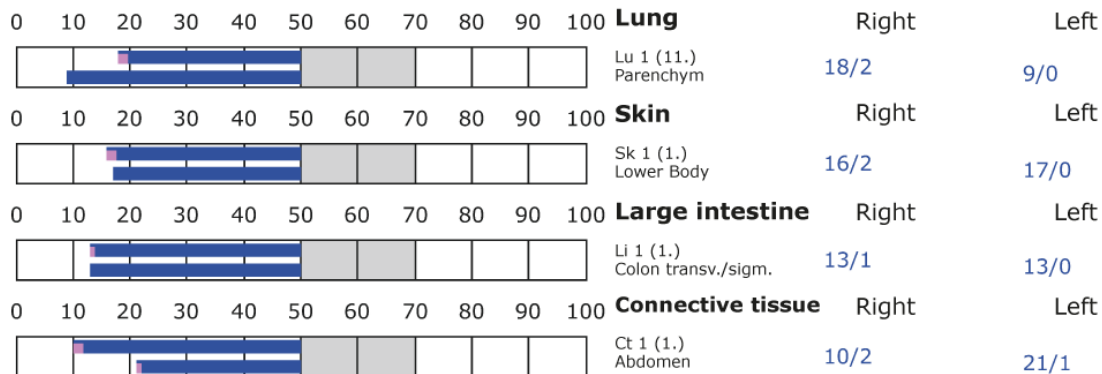
+++ : Indicator decline > 15 Skt.
++ : Indicator decline 6-15 Skt.
+ : Indicator decline 3-5 Skt.

T: Total inflammation (>89 Skt.)
P: Partial inflammation (70-89 Skt.)

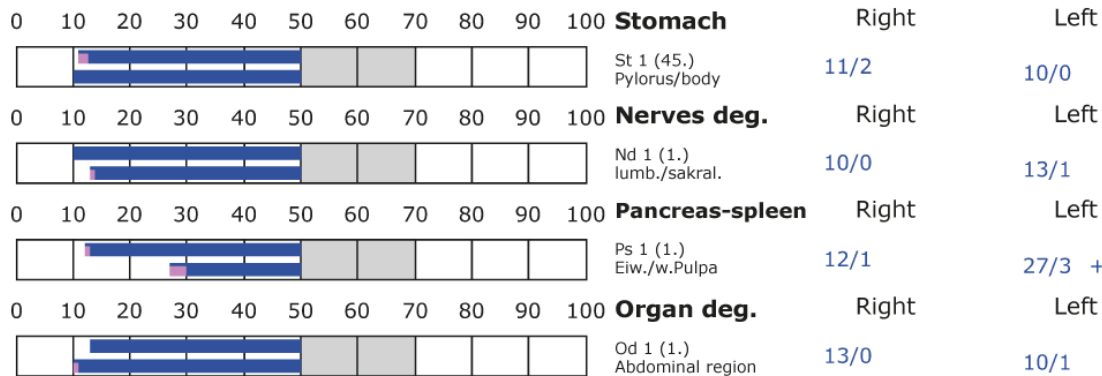
D: Degeneration (< 50 Skt.)

Standard values: (50-70 Skt.)

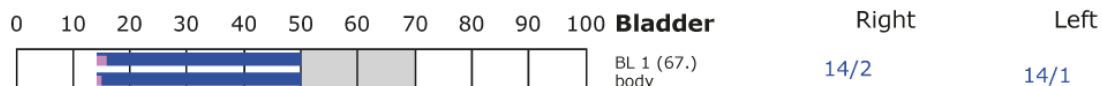
Element: lu - sk - li - ct



Element: st - nd - ps - od



Element: bl - ly - ki - al





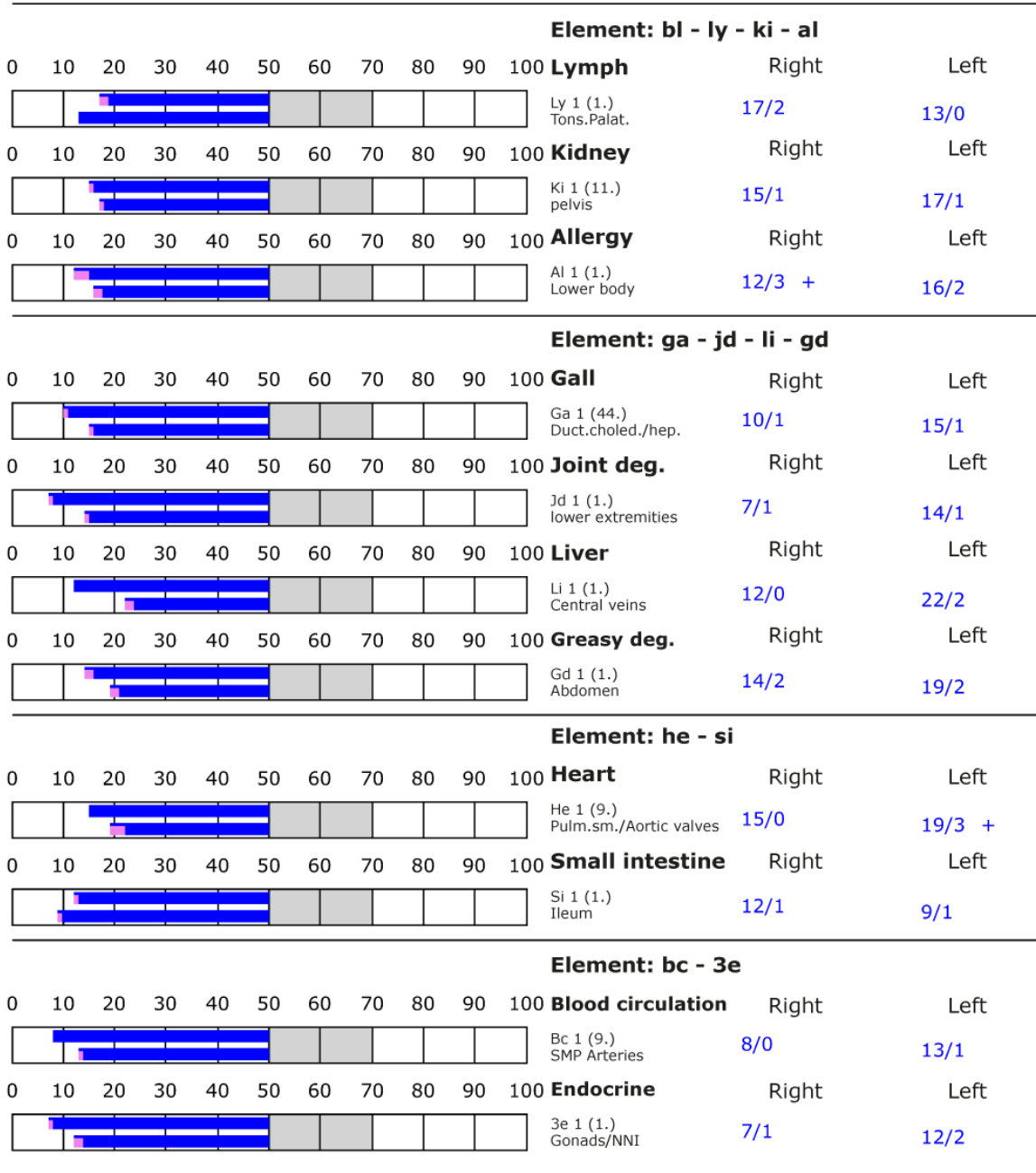
BESA basic test

+++ : Indicator decline > 15 Skt.
++ : Indicator decline 6-15 Skt.
+ : Indicator decline 3-5 Skt.

T: Total inflammation (>89 Skt.)
P: Partial inflammation (70-89 Skt.)

D: Degeneration (< 50 Skt.)

Standard values: (50-70 Skt.)





BESA 2 Testing AFTER

BESA 2 Testung NACHHER - Subject after activation via his photograph in the "Leela Quantum Bloc" (quantum entanglement).

The photograph of the test person 2 (hare Paul) is coded with the date (22.01.2021) and quantum-physically charged for 24 hours in the "Leela Quantum Bloc". 1 day later, BESA testing is performed on the subject, who is located about 30 km from the „Leela Quantum Bloc“. In the further BESA test course, all sources of EMSF are activated again, as in the BESA test BEFORE, and the BESA test is performed on subject 2. In this BESA test, too, the connected cell phone is in direct contact with the test person and thus actively in his measurement circuit. Mrs. Eva Krankl acts as a surrogate for the rabbit Paul.

Objective: To determine the reaction of the meridian system to the effect of the subject's photograph activated in the "Leela Quantum Bloc"? How does the subject react to the activation of his photograph? Determination of the differences compared to the BESA 1 tests BEFORE.

BESA Test evaluation P72 4.2

from **23-01-2021 at 11:20 – 11:26** (6 Minutes) page 21 and 22

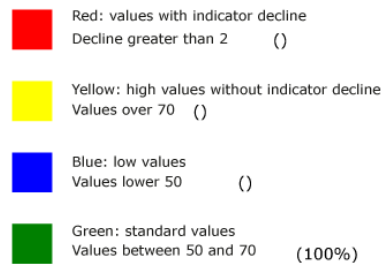
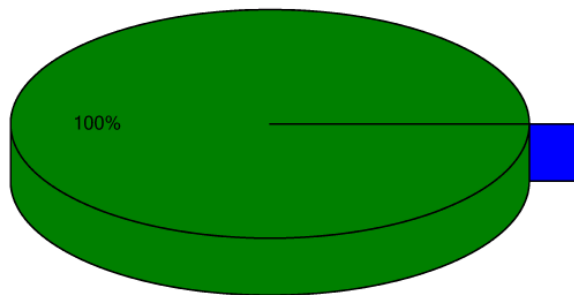
result: The measurement result shows significant improvements at the meridian endpoints or at the energetic state of the test person.

100 % in the green area

Conclusion: As the BESA graphs show, after activation of the subject's photography in the "Leela Quantum Bloc", all measurement points on the subject are in the green, optimal and harmonized range (balanced energy system). The BESA testing shows a significant improvement of the energy situation in the meridian system of the test person compared to the BESA 1 testing BEFORE. It is shown that the "Leela Quantum Bloc" is able, even over a distance of more than 30 km (quantum entanglement), to give the red readings detected in the BESA 1 testing BEFORE (total deregulation) a necessary impulse for harmonization (neutralization) into a life-supporting range. The comparisons of the BESA graphs confirm the change and resolution of the stressed (red) acupuncture points on the meridian system of the subject.



Overview of BESA measuring



BESA basic test

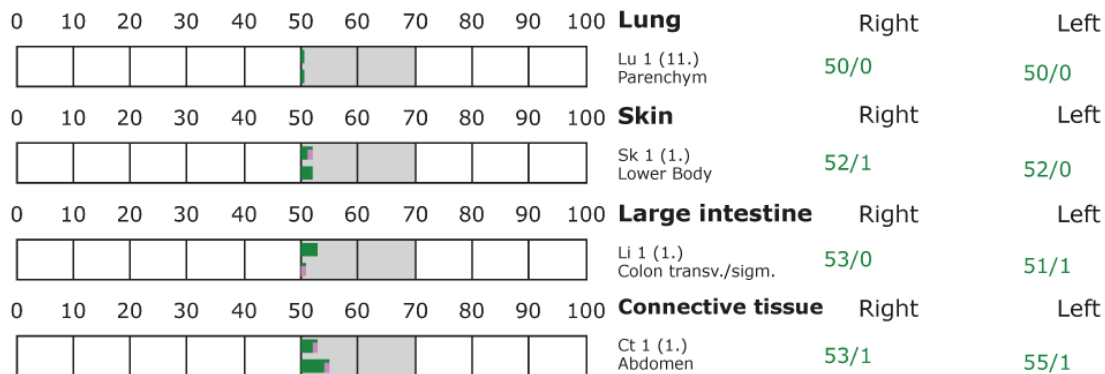
+++ : Indicator decline > 15 Skt.
++ : Indicator decline 6-15 Skt.
+ : Indicator decline 3-5 Skt.

T: Total inflammation (>89 Skt.)
P: Partial inflammation (70-89 Skt.)

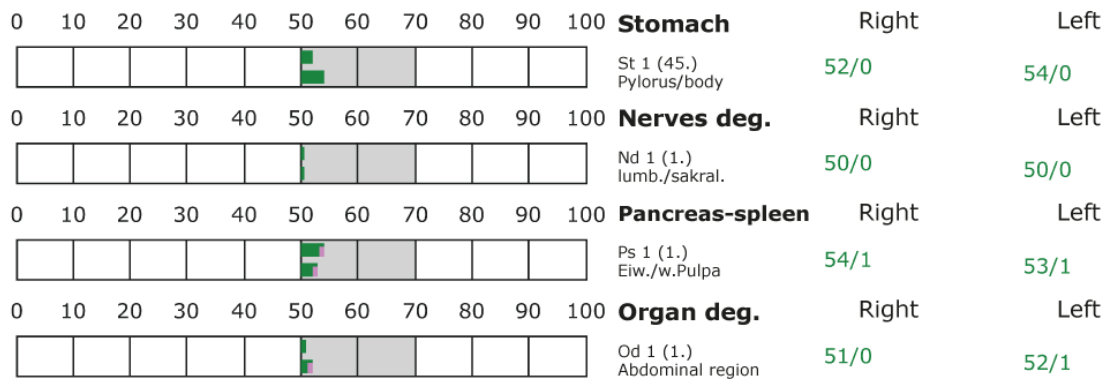
D: Degeneration (< 50 Skt.)

Standard values: (50-70 Skt.)

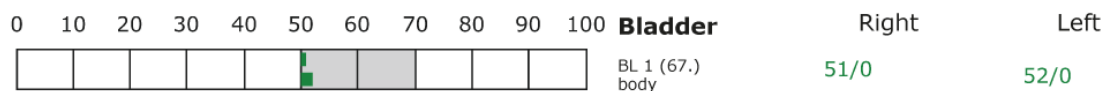
Element: lu - sk - li - ct



Element: st - nd - ps - od



Element: bl - ly - ki - al





BESA basic test

+++ : Indicator decline > 15 Skt.
++ : Indicator decline 6-15 Skt.
+ : Indicator decline 3-5 Skt.

T: Total inflammation (>89 Skt.)
P: Partial inflammation (70-89 Skt.)

D: Degeneration (< 50 Skt.)

Standard values: (50-70 Skt.)

Element: bl - ly - ki - al													
0	10	20	30	40	50	60	70	80	90	100	Lymph	Right	Left
											Ly 1 (1.) Tons.Palat.	61/0	50/1
0	10	20	30	40	50	60	70	80	90	100	Kidney	Right	Left
											Ki 1 (11.) pelvis	55/0	52/0
0	10	20	30	40	50	60	70	80	90	100	Allergy	Right	Left
											Al 1 (1.) Lower body	51/1	55/0
Element: ga - jd - li - gd													
0	10	20	30	40	50	60	70	80	90	100	Gall	Right	Left
											Ga 1 (44.) Duct.choled./hep.	55/0	52/1
0	10	20	30	40	50	60	70	80	90	100	Joint deg.	Right	Left
											Jd 1 (1.) lower extremities	51/0	51/1
0	10	20	30	40	50	60	70	80	90	100	Liver	Right	Left
											Li 1 (1.) Central veins	51/0	52/2
0	10	20	30	40	50	60	70	80	90	100	Greasy deg.	Right	Left
											Gd 1 (1.) Abdomen	52/0	51/0
Element: he - si													
0	10	20	30	40	50	60	70	80	90	100	Heart	Right	Left
											He 1 (9.) Pulm.sm./Aortic valves	50/0	51/0
0	10	20	30	40	50	60	70	80	90	100	Small intestine	Right	Left
											Si 1 (1.) Ileum	50/0	52/0
Element: bc - 3e													
0	10	20	30	40	50	60	70	80	90	100	Blood circulation	Right	Left
											Bc 1 (9.) SMP Arteries	51/0	51/0
0	10	20	30	40	50	60	70	80	90	100	Endocrine	Right	Left
											3e 1 (1.) Gonads/NNI	51/1	51/0



Proband 3

BESA 1 Testing BASIC-BEFORE

BESA 1 BASIC Testing BEFORE as a Status on the 2- Family house

Eva Krankl performs a basic BESA measurement in the house to question the bioenergetic general condition of the house. All BESA tests are performed at the TING points (40 nail fold points on the fingers and toes), whereby Mrs. Eva Krankl stands as a surrogate for the house.

Goal: The creation of a basic test (status) as a representation of the energetic initial situation for all further BESA tests of the house..

BESA Test evaluation P72 4.2

from **11-01-2021 at 17:13 – 17:17** (4 Minutes) page 24 and 25

result: The measurement result indicated nevertheless considerable energetic loads at the meridian acupuncture end points of the testing person Eva Krankl as a surrogate (substitute) for the house.

95 % in the blue area

2 % in the red area

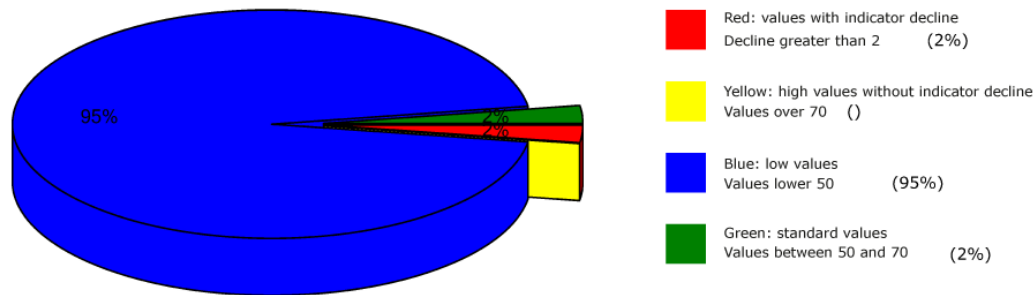
2 % in the green area

1 % in the yellow transition area

Conclusion: As the BESA graphs and the pie chart show, all BESA measurement results were in the blue range, 2% even in the red and thus degenerative range (energy deficiency).



Overview of BESA measuring



BESA basic test

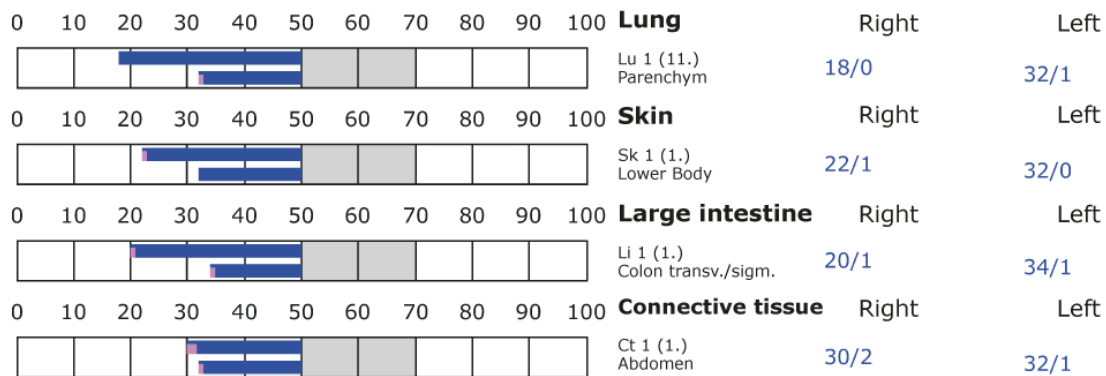
+++ : Indicator decline > 15 Skt.
++ : Indicator decline 6-15 Skt.
+ : Indicator decline 3-5 Skt.

T: Total inflammation (>89 Skt.)
P: Partial inflammation (70-89 Skt.)

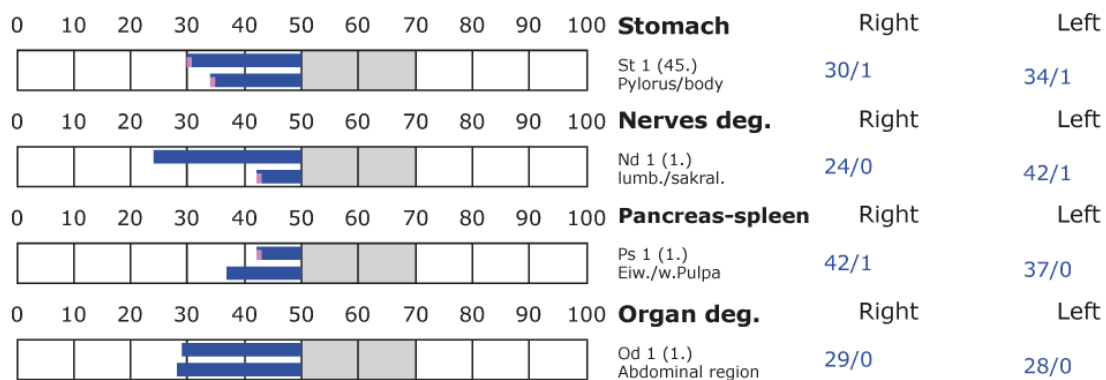
D: Degeneration (< 50 Skt.)

Standard values: (50-70 Skt.)

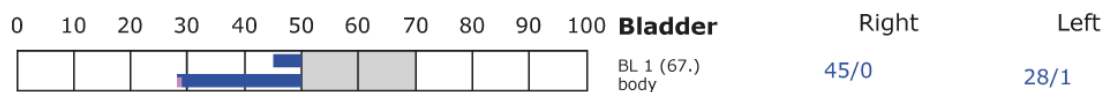
Element: lu - sk - li - ct



Element: st - nd - ps - od



Element: bl - ly - ki - al





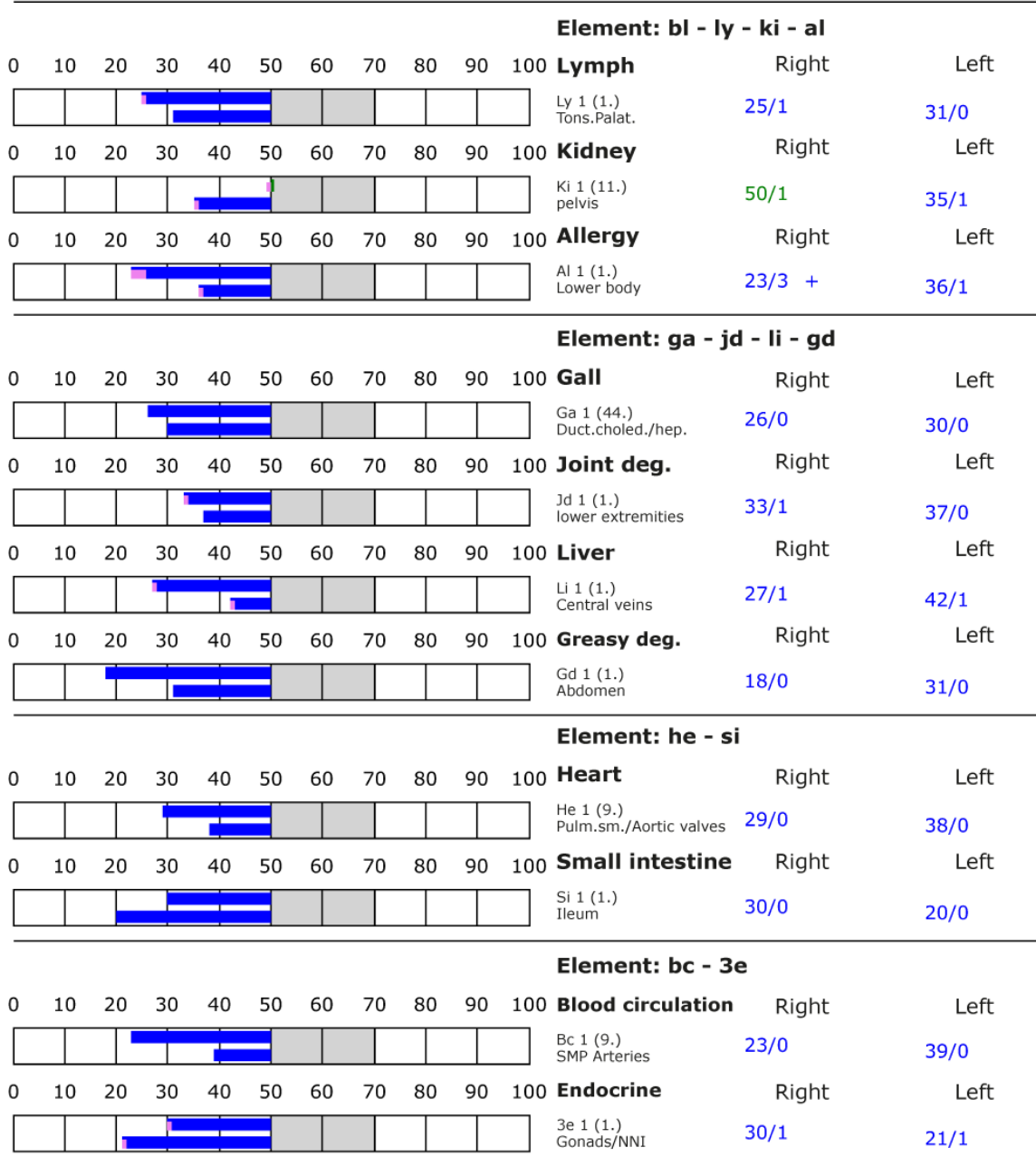
BESA basic test

+++ : Indicator decline > 15 Skt.
++ : Indicator decline 6-15 Skt.
+ : Indicator decline 3-5 Skt.

T: Total inflammation (>89 Skt.)
P: Partial inflammation (70-89 Skt.)

D: Degeneration (< 50 Skt.)

Standard values: (50-70 Skt.)





BESA 2 Testing AFTER

BESA 2 Testung NACHHER - Subject after activation via his photograph in the "Leela Quantum Bloc" (quantum entanglement).

The photograph of the proband 3 (two-family house) is coded with the date (22.01.2021) and quantum-physically charged for 24 hours in the "Leela Quantum Bloc". 1 day later a BESA test is performed on the test person (surrogate Eva Krankl), who is located about 30 km from the „Leela Quantum Bloc“.

Objective: To determine the reaction of the meridian system to the effect of the photograph of the test person (two-family house) activated in the "Leela Quantum Bloc"? How does the subject (two-family house) react to the activation of the photograph? Determine the differences compared to the BESA 1 tests BEFORE.

BESA Test evaluation P72 4.2

from **23-01-2021 at 11:27 – 11:32** (5 Minutes) page 27 and 28

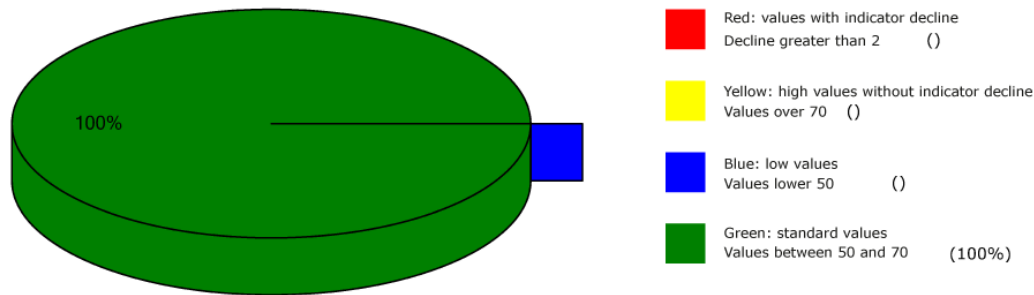
result: The measurement result shows significant improvements on the energy system of the house (on the meridian acupuncture endpoints or on the energetic state of the surrogate).

100 % in the green area

Conclusion: As the BESA graphics show, after activating the photography of the test person (house) in the "Leela Quantum Bloc", all measuring points on the test person are in the green, optimal and harmonized area (balanced energy system). This means that the organism of the subject feels comfortable in this house. The BESA test results in a significant improvement of the energy situation in the meridian system of the test person compared to the BESA 1 tests BEFORE. It is shown that the "Leela Quantum Bloc" is able, even over a distance of more than 30 km (quantum entanglement), to give the degenerative blue and red readings (total deregulation) detected in the BESA 1 testing BEFORE a necessary impulse for harmonization (neutralization) into a life-promoting range. The comparisons of the BESA graphs confirm the change and resolution of the stressed (red) acupuncture points on the meridian system of the test person. Interesting: almost all measured values are close to scale value 50, which corresponds to an ideal measured value.



Overview of BESA measuring



BESA basic test

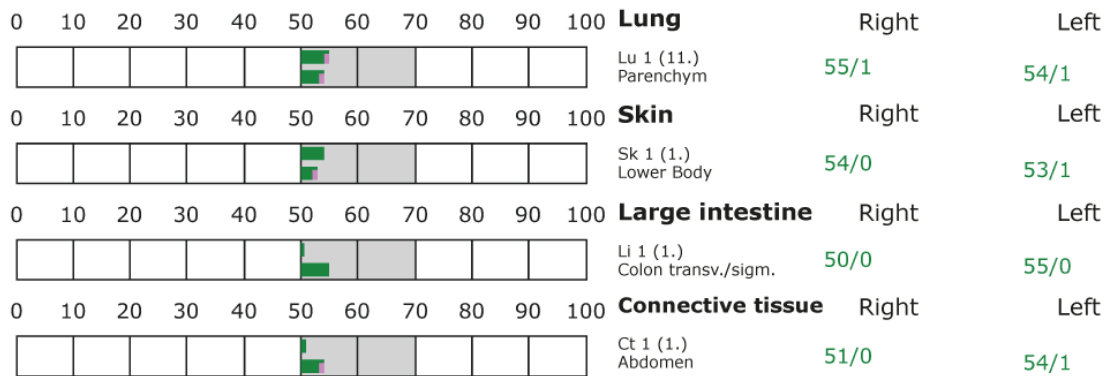
+++ : Indicator decline > 15 Skt.
++ : Indicator decline 6-15 Skt.
+ : Indicator decline 3-5 Skt.

T: Total inflammation (>89 Skt.)
P: Partial inflammation (70-89 Skt.)

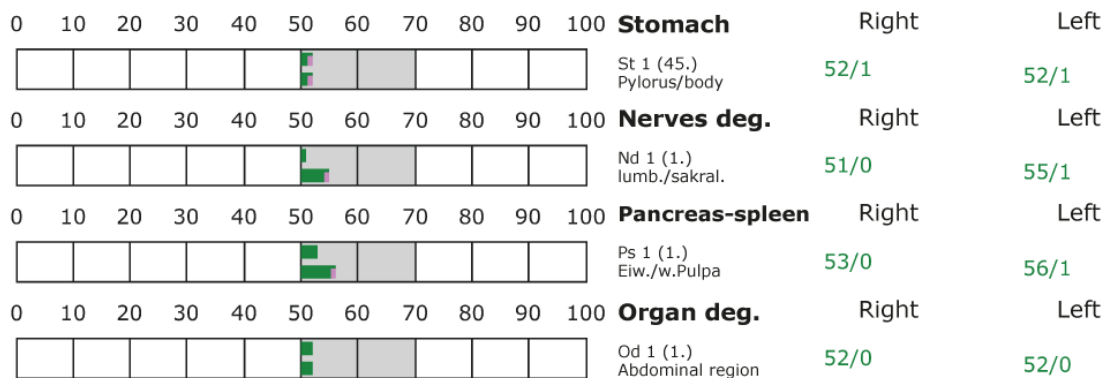
D: Degeneration (< 50 Skt.)

Standard values: (50-70 Skt.)

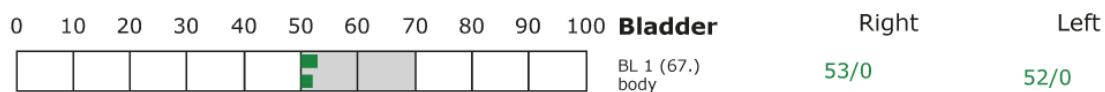
Element: lu - sk - li - ct



Element: st - nd - ps - od



Element: bl - ly - ki - al





BESA basic test

+++ : Indicator decline > 15 Skt.
++ : Indicator decline 6-15 Skt.
+ : Indicator decline 3-5 Skt.

T: Total inflammation (>89 Skt.)
P: Partial inflammation (70-89 Skt.)

D: Degeneration (< 50 Skt.)

Standard values: (50-70 Skt.)

Element: bl - ly - ki - al													
0	10	20	30	40	50	60	70	80	90	100	Lymph	Right	Left
										Ly 1 (1.) Tons.Palat.	61/1	53/1	
0	10	20	30	40	50	60	70	80	90	100	Kidney	Right	Left
										Ki 1 (11.) pelvis	55/1	51/0	
0	10	20	30	40	50	60	70	80	90	100	Allergy	Right	Left
										Al 1 (1.) Lower body	56/1	53/0	
Element: ga - jd - li - gd													
0	10	20	30	40	50	60	70	80	90	100	Gall	Right	Left
										Ga 1 (44.) Duct.choled./hep.	55/0	52/0	
0	10	20	30	40	50	60	70	80	90	100	Joint deg.	Right	Left
										Jd 1 (1.) lower extremities	53/0	53/1	
0	10	20	30	40	50	60	70	80	90	100	Liver	Right	Left
										Li 1 (1.) Central veins	55/0	54/0	
0	10	20	30	40	50	60	70	80	90	100	Greasy deg.	Right	Left
										Gd 1 (1.) Abdomen	54/1	52/0	
Element: he - si													
0	10	20	30	40	50	60	70	80	90	100	Heart	Right	Left
										He 1 (9.) Pulm.sm./Aortic valves	52/1	51/1	
0	10	20	30	40	50	60	70	80	90	100	Small intestine	Right	Left
										Si 1 (1.) Ileum	50/0	52/0	
Element: bc - 3e													
0	10	20	30	40	50	60	70	80	90	100	Blood circulation	Right	Left
										Bc 1 (9.) SMP Arteries	51/0	53/0	
0	10	20	30	40	50	60	70	80	90	100	Endocrine	Right	Left
										3e 1 (1.) Gonads/NNI	53/1	52/1	

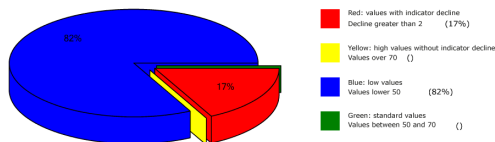


All BESA-tests at a glance

Proband 1

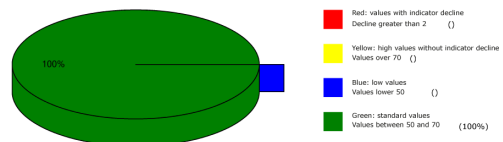
BESA Basic BEFORE

Overview of BESA measuring



BESA Testing after activation of the „Leela Quantum Bloc“

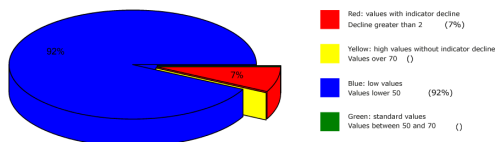
Overview of BESA measuring



Proband 2

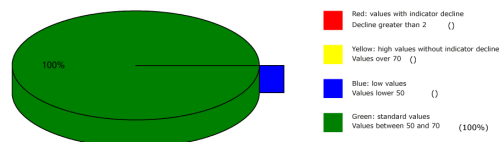
BESA Basic BEFORE

Overview of BESA measuring



BESA Testing after activation of the „Leela Quantum Bloc“

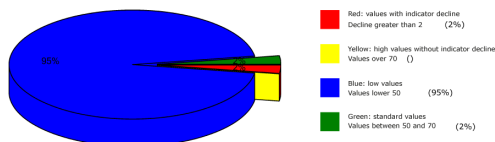
Overview of BESA measuring



Proband 3

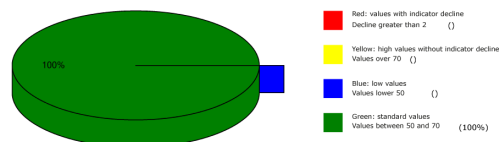
BESA Basic BEFORE

Overview of BESA measuring



BESA Testing after activation of the „Leela Quantum Bloc“

Overview of BESA measuring





General information about the test result

The human being or all biological objects represent a kind of receiving antenna for environmental information. This is because the life of man and all other biological objects depends fundamentally and exclusively on environmental information. Our organism is biologically very sensitive where natural information (fields) are located or where they are subject to interactions and fluctuations. For this reason, detected informative electromagnetic interference fields are biologically highly relevant. **Any reduction or transformation of these interfering fields (ideally to 100 percent) is biologically very important, often even decisive for life.**

These informational disturbances from our environment are only compatible with life if they can be readjusted to a natural fluctuation tolerance. Disturbances, problems, blockades, disharmonies in the biological control circuit of man find their causes in such disturbing information influences.

Neutralizing or harmonizing effects could be proven in this detailed project P72 4.2 to determine the effect of the "Leela Quantum Bloc".

The test persons who were energetically activated in the "Leela Quantum Bloc" as a photograph via the quantum entanglement could neutralize the biologically adverse effects and effects determined on all test persons, especially those of disturbing fields in the everyday living space. Yes, even at the house itself, a significant improvement of the energetic house condition could be determined via the BESA tests BEFORE and AFTER, even over a distance of more than 30 km.

The decisive ability of the "Leela Quantum Bloc" to neutralize and harmonize the life-threatening information or tested stress factors tested in this detailed project P72 4.2 and their transformation into biological life-promoting goodness is proven with this project.

Autorized Summary

Die The BESA tests carried out by IFVBESA on the energetic and physical effectiveness of the "Leela Quantum Bloc" as well as the process of quantum entanglement have clearly shown that it is able to neutralize or harmonize biologically significant stress factors on the energetic system of the test persons. By means of the bioenergetic system analysis, the effect of the above-mentioned stress factors on the test persons, their meridian system and their energetic-biological control circuits was questioned and systemically tested on the bioenergetic level.



The BESA tests BEFORE - AFTER show significant changes at the tested acupuncture points or at the meridian system. The measurement data as well as their key figures impressively confirm on the one hand the stresses that were caused by the tested interference fields on the organism of the test persons, respectively of the house itself, and on the other hand they clarify how after the application of the "Leela Quantum Bloc" the deregulating energies are transformed into body-immanent and biocompatible energies.

From a holistic point of view, it may be assumed that the positive effect on the test persons also occurs with other people and objects. The fact that the positive influence of the "Leela Quantum Bloc" is actually possible with high precision is clearly shown by the BESA-Before-After comparison. All measured values improved significantly from the mostly 100-percent blue measuring range to the green mostly 50-second range (scale value), i.e. the range of optimal measured values. This means: an optimal regulation dynamic has taken place. Here, in the sense of the IFVBESA, one can clearly speak of an optimal, significant improvement of the body's own energy situation.

Result: The test persons were brought into contact with heavily stressing frequencies (information) during the BESA-NACHHER testing. In contrast to the BEFORE tests, in which the "Leela Quantum Bloc" was not used, positive measurement results were found throughout, indicating that neutralization or harmonization had taken place. Yes, even through the use of the "Leela Quantum Bloc", a neutralization could be tested on the test subjects via quantum entanglement at a distance of more than 30 km in all areas. In all cases, the regulatory dynamics developed into an optimal effective range.

By proving the bioenergetic effectiveness of the "Leela Quantum Bloc" in terms of quantum entanglement in this detailed project P72 4.2, the requirements for obtaining a BESA seal of approval by the International Professional Association for BESA were met.