



# IFVBESA

Information is crucial

P72 4.0 BESA-Detailproject  
Family Home  
Leela Quantum Bloc



Internationaler Fachverband für BESA | ZVR Nr. 975047937  
Hauptstraße 1, A 4861 Kammer-Schörfling am Attersee | Österreich - Austria  
Tel.: +43 – 664 – 73152899 | E-Mail: [info@ifvbesa.at](mailto:info@ifvbesa.at)

# Projekt P72 4.0 to the BESA Expert opinion

bioenergetic System analysis  
within the framework of the BESA seal of approval on the effectiveness  
of the product „Leela Quantum Block“  
in the Family Home  
also referred to as „test object“ in the project





Internationaler Fachverband für BESA | ZVR Nr. 975047937  
Hauptstraße 1, A 4861 Kammer-Schörfling am Attersee | Österreich - Austria  
Tel.: +43 – 664 – 73152899 | E-Mail: [info@ifvbesa.at](mailto:info@ifvbesa.at)

## **Client**

Firma Leela Quantum Tech, LLC  
Attn: Eleonora Goldenberg  
1421 LUISA STREET, STE G  
SANTA FEE, NM 87505  
USA

## **Project participants:**

**Project leader:** Wolfgang Hans Albrecht, präsidant and scientific director of the IFVBESA

**Test person:** Eva Krankl, Vicepräsident and deputy scientific director of the IFVBESA

**Respondent:** 8 anonymous subject in the (Detail) Projects P72 1.0, P72 2.0, P72 3.0, P72 4.0 as well P72 4.1 and P72 4.2

These break down as follows:

- 1 Respondent at P72 1.0 - New-Snow (chemtrails)
- 2 Respondent at P72 2.0 - Automatic-clocks in the „Leela Quantum Bloc“
- 1 Respondent at P72 3.0 – Sweater at quantum entanglement via „Leela Quantum Bloc“
- **5 Respondents at P72 4.0 - family home + Leela Quantum Bloc“**
- 3 Respondents at P72 4.1 - family home without „Leela Quantum Bloc“
- 3 Respondents at P72 4.2 - family home + „Leela Quantum Bloc“ with quantum entanglement

**other participants:** none

## **Project location:**

Location of the IFVBESA, Hauptstraße 1, A 4861 Kammer/Schörfling

**Date:** 27.12.2020 until 07.02.2020

**Project duration:** 42 Days



## Table contents

BESA-Legende <b>zur Interpretation der BESA Messergebnisse</b> .....	5
Grundlagen der Forschungs-Projekterstellung P72 .....	6
Forschungsförderleistungen des IFVBESA – BESA- Referenztestungen.....	6
Forschungsprojektbeschreibung (Detailprojekt) .....	8
Testablauf .....	9
<b>Alle BESA-Testungen im Überblick</b> .....	54
Allgemeines zum Testergebnis .....	56
Autorisierte Zusammenfassung .....	57

### Important notes:

The client owns the right to exploit this project report. Irrespective of this, this report represents intellectual property of IFVBESA as the contractor. The contractor is entitled to use this project report for other purposes if this does not violate the client's data protection or confidentiality. On the other hand, the project report, with the exception of the "authorized abridged version", may not be changed or passed on in abridged form without the consent of the IFVBESA. The order for this project refers to bioenergetically measurable values and their interpretation according to the guidelines of BESA or the IFVBESA. The maintenance of the quality of the tested products as well as their regular control is the task and responsibility of the client. Investigation of the manufacture, mechanism of action or interpretations of the Client's products to third parties is not the responsibility or task of the Contractor. Video recordings may be made only with the permission of IFVBESA.



## BESA-legend for the interpretation of the BESA measurement results

The measured value of 50 on the tested meridian represents an optimal energetic state in this organ or its subordinate and superordinate levels. Also measured values in the range of 50 to max. 70 still count as a neutral and balanced energy status. The organism is able to regulate irritations of the system (wrong environmental signals) very well.

Measured values above 70 to 100 represent the inflammatory range or a so-called energy surplus as a reaction to the irritations of the system by corresponding environmental signals. After reaching the maximum values, the energy state tips into the degenerative (blue) range.

Measured values from below 50 to around 0 represent the so-called degenerative measuring range or a lack of energy as a reaction to the stimulation of the system by corresponding environmental signals.

Measured values represented by a so-called pointer drop of more than 3 scale lines indicate total deregulation. The influence of certain environmental signals then leads to such strong system overloads, which can only be brought into harmonization by corresponding new signals.

### BESA key figures:

<b>up to 0,79</b>	very deep energetic regulatory disorder (SSD) energy deficiency
<b>0,8 to 1,19</b>	strong energetic regulation disturbance (SD) degeneration/energy deficiency
<b>1,2 to 1,59</b>	energetic regulation disorder (D) degeneration/energy deficiency
<b>1,6 to 1,99</b>	degenerative transition area (DÜ)
<b>2,0 to 2,39</b>	optimal regulation (OR)
<b>2,4 to 2,79</b>	in the regulation (R)
<b>2,8 to 3,19</b>	partial inflammation = regional energy excess (PE)
<b>from 3,2</b>	total inflammation = strong general energy surplus (TE)





## Basics of the research project creation P72

The international professional association for bioenergetic system analysis was commissioned by the company Leela Quantum Tech LLC to test or prove the effect of the test object "Leela Quantum Bloc" by means of bioenergetic system analysis (BESA). The testing took place independently of the subjective feeling of all test persons.

### **Description of the "Leela Quantum Bloc" by the client:**

"Leela Quantum Bloc" is a quantum space generator and concentrator, which is highly concentrated inside the device between the plates. At the same time, the Quantum Bloc has an energetic extension of more than 100 meters, which however does not represent the concentrated quantum space, but a positive energetic quantum field. This quantum field neutralizes and harmonizes on the one hand negative frequencies and vibrations and on the other hand provides overall positive, inviting and peaceful energy. In the quantum space itself (between the plates), each object that is placed there is energetically restructured, optimized and charged with quantum energy within 60 seconds. It can be said from previous tests that any object that has been in the "Leela Quantum Bloc" becomes "better". Whether that is water, food, jewelry, technical devices, etc. The essential difference of the "Quantum Bloc" to other "quantum energy producing devices" is that the Quantum Bloc works on more than one level of consciousness (and thus on this level one-dimensional, figuratively represented like a flat field). The Quantum Bloc works on more than 50 levels at the same time and is therefore a multidimensional quantum space in every respect. This has the advantage, also among others compared to other devices, that even if the energy is increased, there is no imbalance or negative energetic pressure. This is especially important for users whose organism cannot yet handle such higher energy levels. Furthermore, the "Leela Quantum Bloc" needs only about 30 seconds to transfer a frequency in it from one object to another. We have also been able to observe this in 20 seconds, but officially advise a minute (60 seconds).

### The client assumes that the Quantum Bloc can produce the following effects:

- charge any object with comprehensive, positive quantum energy.
- For clarification: energies are always neutral. With "positive" the client wants to refer to the positively affecting energy of the objects in the room such as people, animals, plants, etc.
- copy any frequencies within only 1 minute
- harmonizing energy field for home, workplace, car, etc.
- harmonization of any negative frequencies
- helps to dive deeper into one's own consciousness (whether in meditation, daily life, "retrieving" information, etc.)



- optimizes food, water and all other substances
- positive effect on human cells and body (physical and energetic). For this purpose it is enough just to be in the expanded field of the Quantum Bloc. If one part of the body is in the concentrated quantum space, automatically not only the cells of this one part of the body, but the cells of the whole body are intensively touched.
- neutralizes unwanted "dark entities" or keeps them away due to the high light vibration or "brings" them into the light
- cleanses the aura
- supports positive affirmations within the framework of legality and also accelerates their manifestation within the framework of legality

## Research funding services of the IFVBESA - BESA- reference tests

General information about this project:

This detailed project P72 4.0 is about the proof of effect of the "Leela Quantum Bloc" against certain stress factors in the environment of a 2-family house including inhabitants and pets. For this project, 1 house as well as 4 test persons, i.e. a total of 5 test persons, were selected. Subjects 1 and 2 are the couple living in the house, subject 3 is the cat Mia, subject 4 is the rabbit Paul. Subject 5 is the house itself. For subjects 3, 4 and 5, a so-called surrogate serves.

What is a surrogate: This is a substitute person who stands for the respective subjects. Example: A cat has fingers and toes in a different sense than a human. Otherwise, the cat has all organs like the human. In this case, the surrogate takes over the function of the cat during BEASA testing.

The client starts from the assertion that through the application of the "Leela Quantum Bloc" both the house respectively the property as well as the couple living in this house together with their pets, energize themselves quantum-physically. The Leela Quantum Bloc should therefore be practically and factually suitable to bring the possibly tested deficiency states or stress factors of the objects back into the physiological norm. In addition to natural interference fields, artificial EMSF (electromagnetic interference fields) are also tested. In this project, these include: wi-fi, Bluetooth, smart meters, as well as radiation from mobile phones of generation 4G and 5G. This will be tested on test persons via this BESA project.

The "Leela Quantum Bloc" is tested according to the requirements of the client within the framework of the applicable conditions of the IFVBESA for the award of quality seals. Depending on the significance of the test results, seals of approval are awarded in 3 categories, taking into account all tests of a project.



The client and developer of the "Leela Quantum Bloc" assumes that it is capable of compensating for the stresses and deficiencies that may have been presented to the test person via this project, as well as replacing the associated negative states with positive states.

Whether the "Leela Quantum Bloc" is able to do this is to be questioned by the following commissioned BESA tests on the test person.

#### To the general information of the information transfer:

The information transfer takes place from the hyperspace of the test object to the hyperspace of biological objects (humans, animals, plants). From there the information reaches the reference space or the energy space via so-called interaction channels. This is a union of, among other things, all organs and energy forms in the biological object. There, the information of the program can dynamically materialize and thus change current states. The changes can appear in the form of neutralization or harmonization of disturbances, dissolution of problems, blockages and disharmonies.

### Research project description (detailed project)

The reason for the tests is to prove the functionality of the "Leela Quantum Bloc" through test results obtained by testing the subjects for stress and deficiency conditions in the environment of the 2-family house in order to significantly prove and compare their reactions without the "Leela Quantum Bloc" and with the "Leela Quantum Bloc".

- The BEFORE measurements are made without the "Leela Quantum Bloc"
- The AFTER measurements are made with the "Leela Quantum Bloc"

The question in the AFTER measurement is: "Is the "Leela Quantum Bloc" suitable and able to harmonize or neutralize the thus perceived and possibly negative effects in the environment of the residential building on the organism of the test person?"

The correspondingly designed tests should provide information about this by comparing the preliminary measurements without the "Leela Quantum Bloc" with the test results of the tests carried out using the "Leela Quantum Bloc".

the "Leela Quantum Bloc" with the test results of the follow-up measurements performed with the "Leela Quantum Bloc".

The aim of the development team of the company Leela Quantum Tech LLC is to determine whether the test object, the "Leela Quantum Bloc", as noted in the product description, is suitable for neutralizing the deficiency symptoms and the associated disturbances in the meridian system of the test person.





### Conditions:

The BESA tests are performed in the premises of the IFVBESA under laboratory conditions, at room temperature 20° Celsius, on natural wood flooring. The test persons are deswitcht (made testable) before the BESA tests or the test possibilities are questioned on the respective test persons. All BESA field tests are conducted according to the IFVBESA conditions for field tests.

- Pos.1** BESA basic tests BEFORE (bioenergetic status) on all 5 test persons
- Pos.2** BESA testing BEFORE + EMSF on 4 subjects
- Pos.3** BESA testing AFTER of all test persons activated by the "Leela Quantum Block
- Pos.4** Evaluation of the results in the detailed project as well as summary in the corresponding expert's report according to sample

### Procedure and specifications for the execution

**1. BESA basic measurement** of the test persons at all previously determined measuring points (TING points). This corresponds to the actual condition, so to speak. The results are determined exactly according to the BESA specifications and documented via the known BESA graphs.

**2.** the test persons are brought into contact with the EMSF depending on the project, whereby the sequence discussed with the client is considered as a specification and is adhered to accordingly. In order to be able to determine the current energy state, the measuring points mentioned under point 1 are measured in the same order and for the same duration during each test. The results are determined exactly according to the BESA specifications and documented via the BESA graphs.

### 3. Activation of the test object

When the "Leela Quantum Bloc" is activated in the house, it is attached according to the client's specifications. The measuring points mentioned under point 1 are measured in the same order and time duration to determine the current energy state. The results are determined exactly according to the BESA specifications and documented via the BESA graphs.

## Test procedure

### BESA 1 BASIC Testing BEFORE as a Status

In the first step, basic bioenergetic testing (bioenergetic status) is performed on the meridian end points (iING points) of the subject.



Internationaler Fachverband für BESA | ZVR Nr. 975047937  
Hauptstraße 1, A 4861 Kammer-Schörfling am Attersee | Österreich - Austria  
Tel.: +43 – 664 – 73152899 | E-Mail: [info@ifvbesa.at](mailto:info@ifvbesa.at)

## **BESA 2 Testing BEFORE subjects and EMSF**

In the further BESA testing process, the consequences of the EMSF are tested on the subjects. The question is: How does the meridian system react? How does the energetic status change when confronted with the EMSF? What are the differences in each case compared to BESA 1 BASIC testing BEFORE?

## **BESA 3 Testing AFTER – Effect of the „Leela Quantum Bloc“ in the house with EMSF?**

In the third BESA test, the "Leela Quantum Bloc" is placed in the house. Now the question is: How does the meridian system of the test persons react to the "Leela Quantum Bloc" placed in the house 7 days before with simultaneous activation of the EMSF? What are the results compared to the BESA 1 and 2 tests BEFORE?



# Proband 1

## BESA 1 Testing BASIC-BEFORE

### **BESA 1 BASIC Testing BEFORE as a Status on the Proband 1**

Eva Krankl performs a basic BESA measurement on Subject 1 in the home. All BESA tests are performed at the TING points (40 nail fold points on the fingers and toes).

**Goal:** The creation of a basic test (status) as a representation of the energetic initial situation for all further BESA tests.

BESA Test evaluation P72 4.0  
from **11-01-2021 at 15:54 – 16:02** (8 Minutes) page 12 and 13

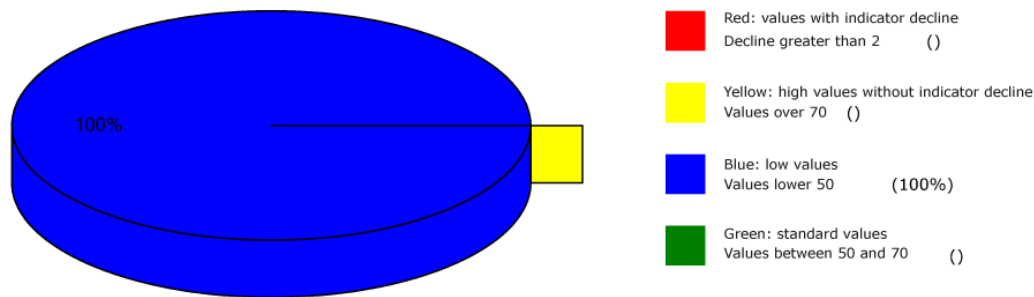
**result:** The measurement result indicated energetic stress at the meridian endpoints and subsequently on the subordinate metabolic situation of the test person.

**100 % in the blue area**

**Conclusion:** As the BESA graphs and the pie chart show, all BESA measurement results were in the blue, degenerative range (energy deficiency).



## Overview of BESA measuring



## BESA basic test

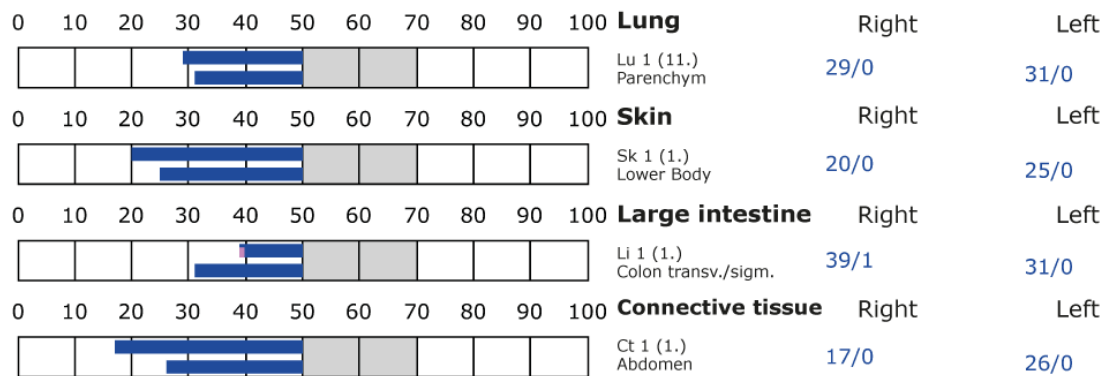
+++ : Indicator decline > 15 Skt.  
++ : Indicator decline 6-15 Skt.  
+ : Indicator decline 3-5 Skt.

T: Total inflammation (>89 Skt.)  
P: Partial inflammation (70-89 Skt.)

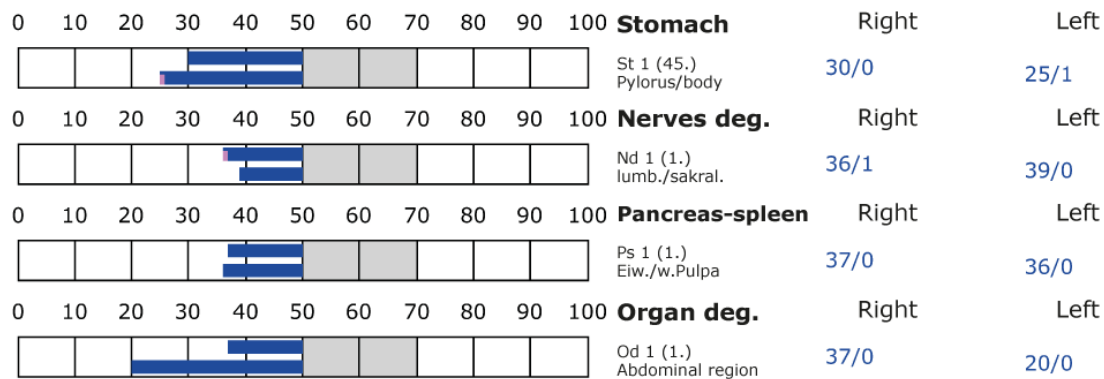
D: Degeneration (< 50 Skt.)

Standard values: (50-70 Skt.)

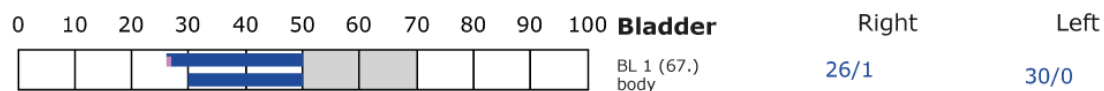
### Element: lu - sk - li - ct



### Element: st - nd - ps - od



### Element: bl - ly - ki - al





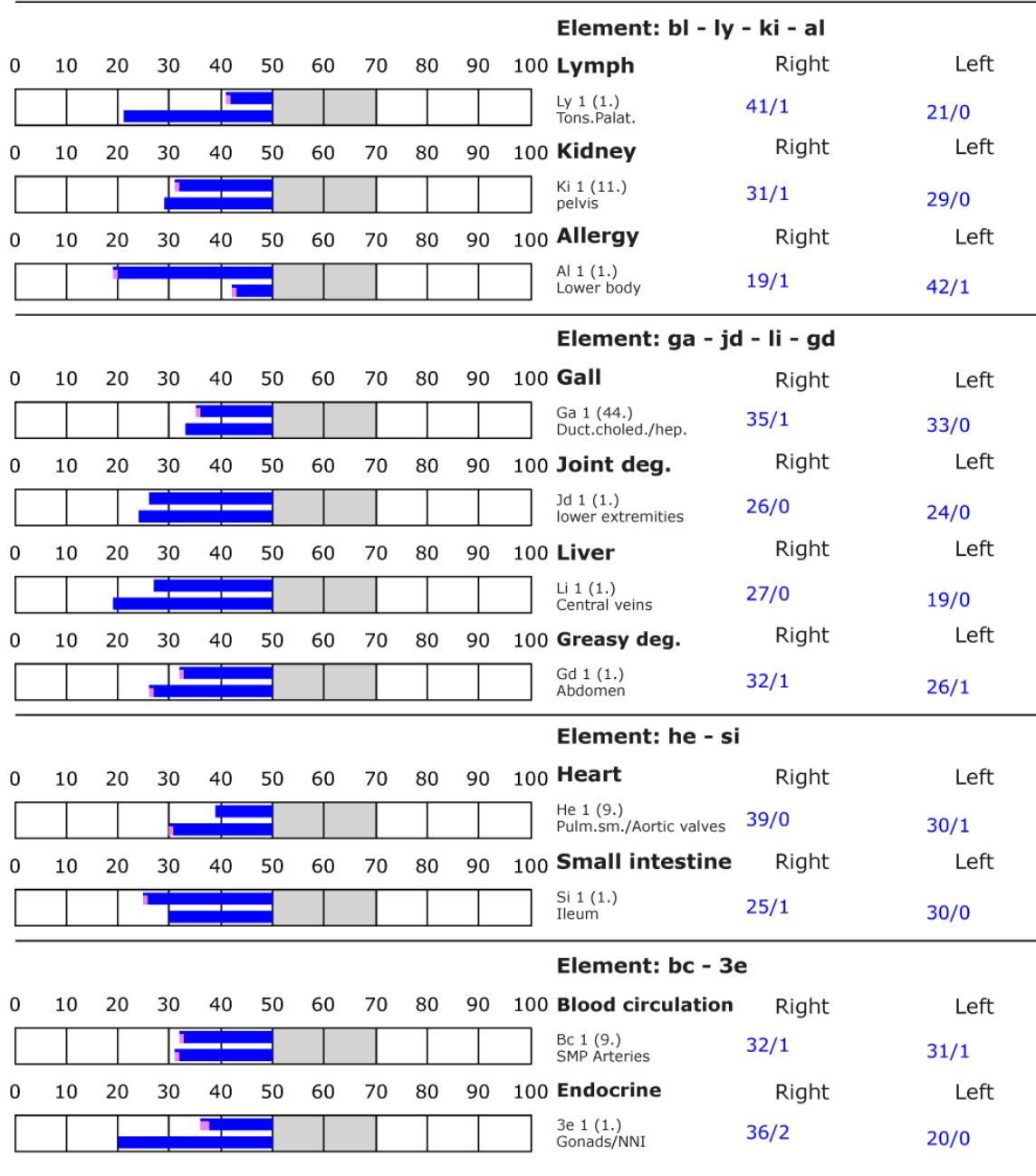
## BESA basic test

+++ : Indicator decline > 15 Skt.  
++ : Indicator decline 6-15 Skt.  
+ : Indicator decline 3-5 Skt.

T: Total inflammation (>89 Skt.)  
P: Partial inflammation (70-89 Skt.)

D: Degeneration (< 50 Skt.)

Standard values: (50-70 Skt.)





## BESA 2 Testing BEFORE

### BESA 2 Testing BEFORE – subject and EMSF

In the further course of the BESA test, the EMSFs are tested on subject 1. For this purpose, wi-fi, smart meter, cell phone of generation 4G and 5G are introduced into the measurement circuit. In addition, a connected cell phone is placed on the left thigh of the test person. Thus, it is actively in the BESA measurement circuit.

**Goal:** To determine the response of the subject's meridian system within these strong EMSF sources. Determination of the differences compared to the BESA 1 test Basic BEFORE.

BESA Test evaluation P72 4.0

from **11-01-2021 at 16:21 – 16:29** (8 Minutes) page 15 and 16

**result:** The measurement result indicated heavy energetic stress at the meridian endpoints and subsequently on the subordinate metabolic situation of the test person.

**82 % in the blue area**

**17 % in the red area**

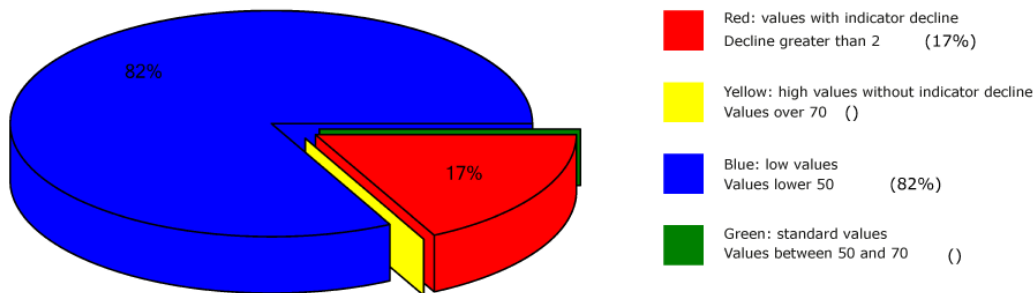
**1 % in the yellow transition area**

**Conclusion:** As the BESA graphs show, many measurement points are in the degenerative blue area (energy deficiency). However, the picture is dramatic due to the now many measured values in the red area. The BESA test thus results in a significant deterioration of the subject's energetic situation compared to the BESA 1 test Basic BEFORE. The red readings represent a total deregulation of these energy areas. This means that the energy system of the organism would seriously damage the test person in case of permanent influences of such or similar interference fields. For a balancing of these red readings or in other words: for a harmonization of the values, the energy system needs a strong positive impulse from outside. The comparisons of the BESA graphs confirm the change and the stressful influences of the EMSF on the test person.





## Overview of BESA measuring



## BESA basic test

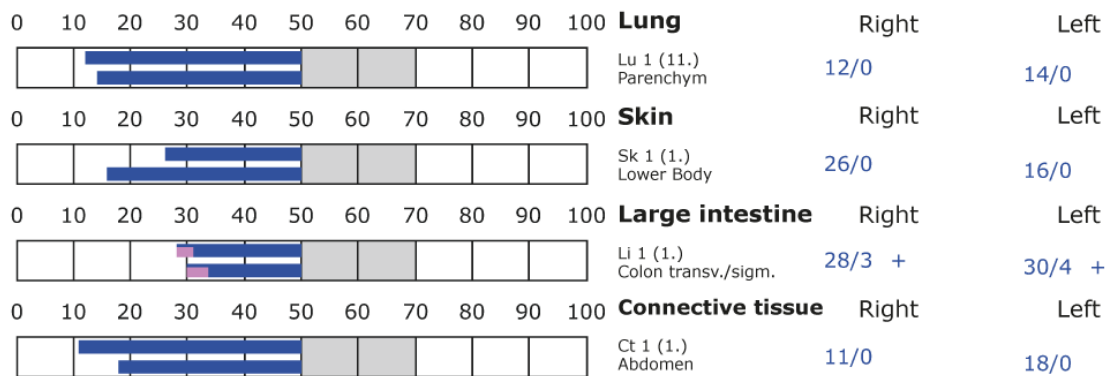
+++ : Indicator decline > 15 Skt.  
++ : Indicator decline 6-15 Skt.  
+ : Indicator decline 3-5 Skt.

T: Total inflammation (>89 Skt.)  
P: Partial inflammation (70-89 Skt.)

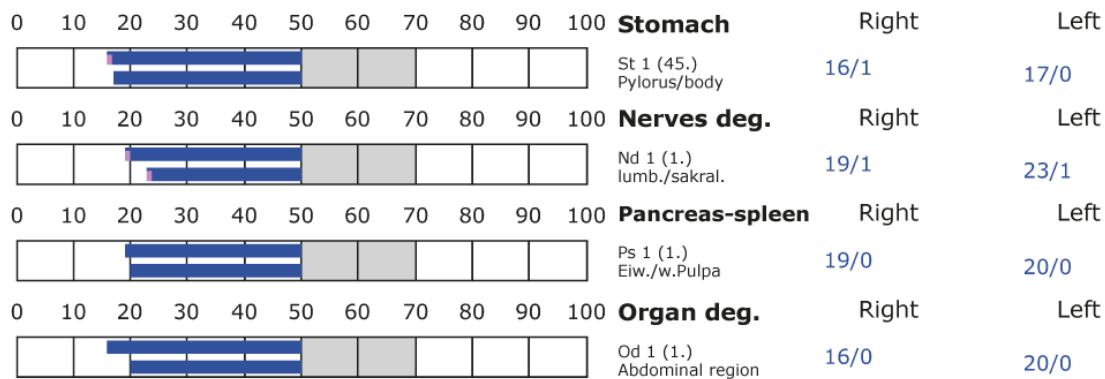
D: Degeneration (< 50 Skt.)

Standard values: (50-70 Skt.)

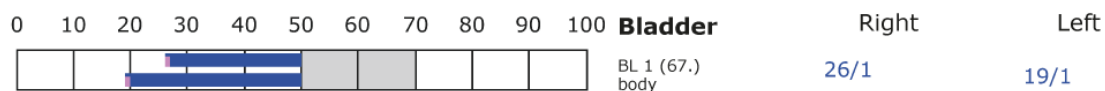
### Element: lu - sk - li - ct



### Element: st - nd - ps - od



### Element: bl - ly - ki - al





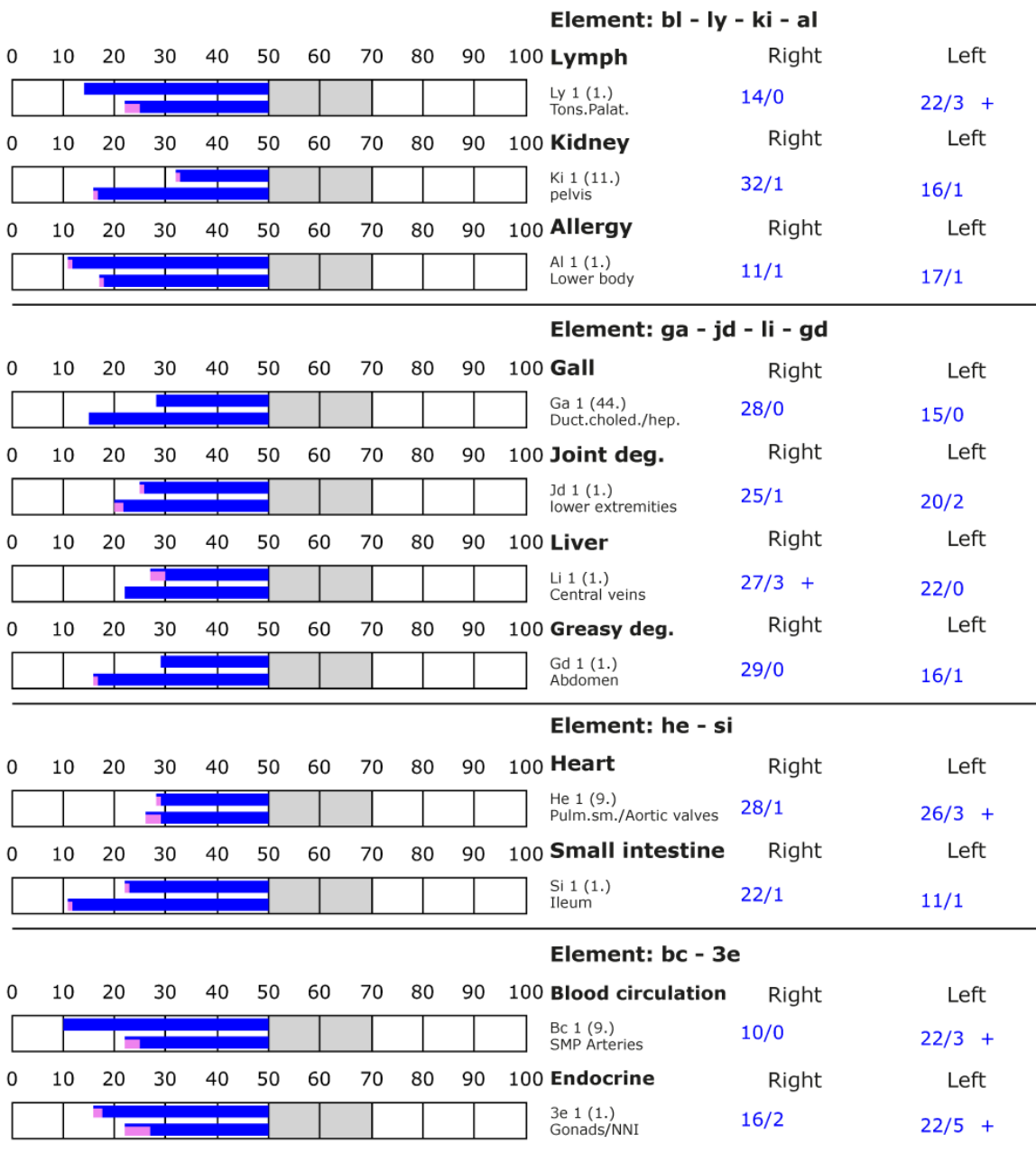
## BESA basic test

+++ Indicator decline > 15 Skt.  
++ Indicator decline 6-15 Skt.  
+ Indicator decline 3-5 Skt.

T: Total inflammation (>89 Skt.)  
P: Partial inflammation (70-89 Skt.)

D: Degeneration (< 50 Skt.)

Standard values: (50-70 Skt.)





## BESA 3 Testing AFTER

### **BESA 3 Testing AFTER - Proband 7 days after activation of the „Leela Quantum Bloc“ in the house.**

In the further course of the BESA test, all sources of EMSF are again activated as in the BESA 2 test and the BESA test is performed on test person 1. In this BESA test, too, the connected cell phone is located on the subject's left thigh and thus actively in the measurement circuit.

**Goal:** To determine the reaction of the meridian system to the effect of the "Leela Quantum Bloc" on the test person? To determine the differences compared to the BESA 1 and 2 tests BEFORE.

BESA Test evaluation P72 4.0

from **18-01-2021 at 16:48 – 16:54** (6 Minutes) page 18 and 19

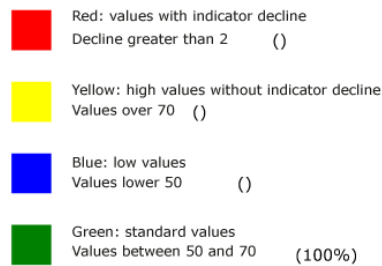
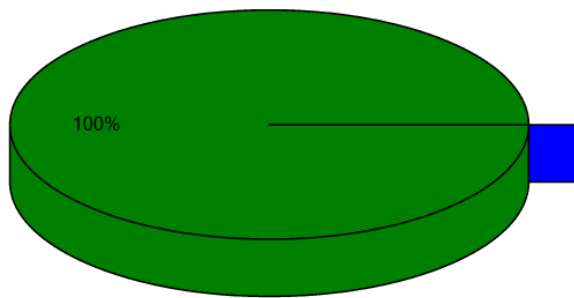
**result:** The measurement result shows significant improvements at the meridian endpoints or at the energetic state of the test person.

**100 % in the green area**

**Conclusion:** As the BESA graphs show, 7 days after inserting the "Leela Quantum Bloc" into the house, all measurement points are in the green, optimal and harmonized range (balanced energy system). The BESA test shows a significant improvement of the energy situation in the meridian system of the test person compared to the BESA 1 and BESA 2 tests BEFORE. It is shown that the "Leela Quantum Bloc" is able to give the red readings (total deregulation) detected in the BESA 2 testing BEFORE a necessary impulse for harmonization (neutralization) into a life-supporting range. The comparisons of the BESA graphs confirm the change and resolution of the stressed (red) acupuncture points on the meridian system of the subject.



## Overview of BESA measuring



## BESA basic test

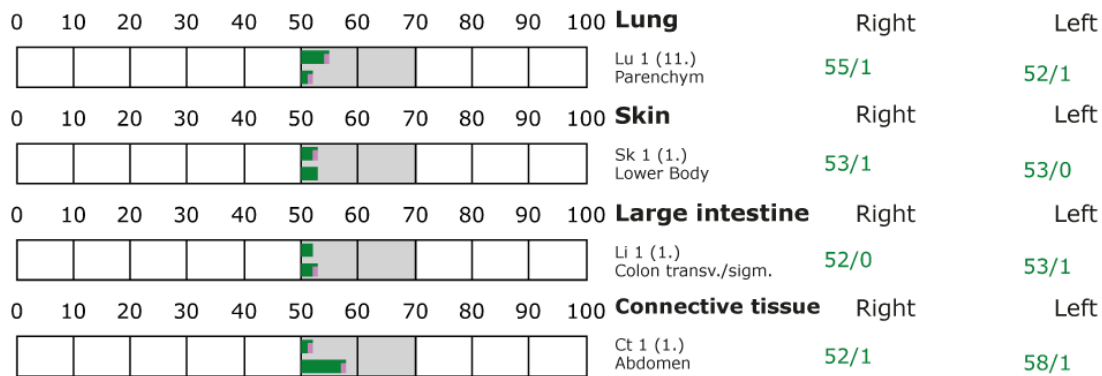
+++ : Indicator decline > 15 Skt.  
++ : Indicator decline 6-15 Skt.  
+ : Indicator decline 3-5 Skt.

T: Total inflammation (>89 Skt.)  
P: Partial inflammation (70-89 Skt.)

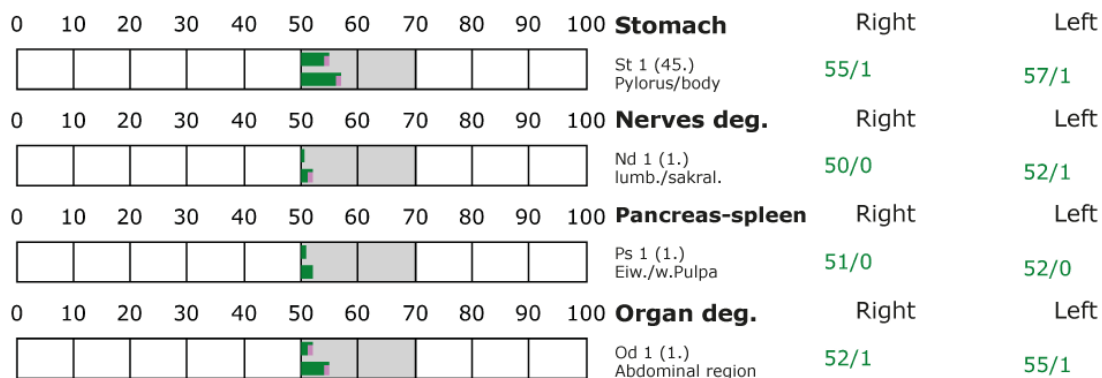
D: Degeneration (< 50 Skt.)

Standard values: (50-70 Skt.)

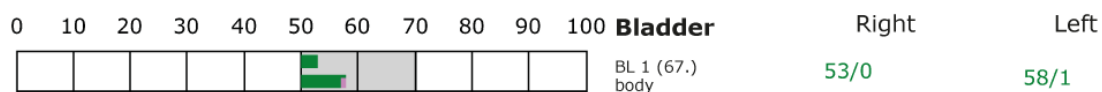
### Element: lu - sk - li - ct



### Element: st - nd - ps - od



### Element: bl - ly - ki - al



## BESA basic test

- +++ : Indicator decline > 15 Skt.
- ++ : Indicator decline 6-15 Skt.
- +: Indicator decline 3-5 Skt.

T: Total inflammation (>89 Skt.)  
P: Partial inflammation (70-89 Skt.)

D: Degeneration (< 50 Skt.)

Standard values: (50-70 Skt.)

Element: bl - ly - ki - al													
<div><div></div><div></div><div></div><div></div><div></div><div></div><div></div><div></div><div></div><div></div><div></div></div>											<b>Lymph</b>	Right	Left
<div><div></div><div></div><div></div><div></div><div></div><div></div><div></div><div></div><div></div><div></div><div></div></div>											Ly 1 (1.) Tons.Palat.	52/1	55/1
<div><div></div><div></div><div></div><div></div><div></div><div></div><div></div><div></div><div></div><div></div><div></div></div>											<b>Kidney</b>	Right	Left
<div><div></div><div></div><div></div><div></div><div></div><div></div><div></div><div></div><div></div><div></div><div></div></div>											Ki 1 (11.) pelvis	54/0	60/1
<div><div></div><div></div><div></div><div></div><div></div><div></div><div></div><div></div><div></div><div></div><div></div></div>											<b>Allergy</b>	Right	Left
<div><div></div><div></div><div></div><div></div><div></div><div></div><div></div><div></div><div></div><div></div><div></div></div>											Al 1 (1.) Lower body	50/1	52/1
Element: ga - jd - li - gd													
<div><div></div><div></div><div></div><div></div><div></div><div></div><div></div><div></div><div></div><div></div><div></div></div>											<b>Gall</b>	Right	Left
<div><div></div><div></div><div></div><div></div><div></div><div></div><div></div><div></div><div></div><div></div><div></div></div>											Ga 1 (44.) Duct.choled./hep.	52/0	53/0
<div><div></div><div></div><div></div><div></div><div></div><div></div><div></div><div></div><div></div><div></div><div></div></div>											<b>Joint deg.</b>	Right	Left
<div><div></div><div></div><div></div><div></div><div></div><div></div><div></div><div></div><div></div><div></div><div></div></div>											Jd 1 (1.) lower extremities	50/0	57/1
<div><div></div><div></div><div></div><div></div><div></div><div></div><div></div><div></div><div></div><div></div><div></div></div>											<b>Liver</b>	Right	Left
<div><div></div><div></div><div></div><div></div><div></div><div></div><div></div><div></div><div></div><div></div><div></div></div>											Li 1 (1.) Central veins	54/1	57/1
<div><div></div><div></div><div></div><div></div><div></div><div></div><div></div><div></div><div></div><div></div><div></div></div>											<b>Greasy deg.</b>	Right	Left
<div><div></div><div></div><div></div><div></div><div></div><div></div><div></div><div></div><div></div><div></div><div></div></div>											Gd 1 (1.) Abdomen	52/1	56/1
Element: he - si													
<div><div></div><div></div><div></div><div></div><div></div><div></div><div></div><div></div><div></div><div></div><div></div></div>											<b>Heart</b>	Right	Left
<div><div></div><div></div><div></div><div></div><div></div><div></div><div></div><div></div><div></div><div></div><div></div></div>											He 1 (9.) Pulm.sm./Aortic valves	51/0	51/0
<div><div></div><div></div><div></div><div></div><div></div><div></div><div></div><div></div><div></div><div></div><div></div></div>											<b>Small intestine</b>	Right	Left
<div><div></div><div></div><div></div><div></div><div></div><div></div><div></div><div></div><div></div><div></div><div></div></div>											Si 1 (1.) Ileum	51/0	54/0
Element: bc - 3e													
<div><div></div><div></div><div></div><div></div><div></div><div></div><div></div><div></div><div></div><div></div><div></div></div>											<b>Blood circulation</b>	Right	Left
<div><div></div><div></div><div></div><div></div><div></div><div></div><div></div><div></div><div></div><div></div><div></div></div>											Bc 1 (9.) SMP Arteries	51/0	52/0
<div><div></div><div></div><div></div><div></div><div></div><div></div><div></div><div></div><div></div><div></div><div></div></div>											<b>Endocrine</b>	Right	Left
<div><div></div><div></div><div></div><div></div><div></div><div></div><div></div><div></div><div></div><div></div><div></div></div>											3e 1 (1.) Gonads/NNI	55/2	51/0



## Proband 2

### BESA 1 Testing BASIC-BEFORE

#### **BESA 1 BASIC Testing BEFORE as a Status on the Proband 2**

Eva Krankl performs a basic BESA measurement on test person 2 in the house. All BESA tests are performed at the TING points (40 nail fold points on the fingers and toes).

**Goal:** The creation of a basic test (status) as a representation of the energetic initial situation for all further BESA tests.

BESA Test evaluation P72 4.0

from **11-01-2021 at 16:02 – 16:07** (5 Minutes) page 21 and 22

**result:** The measurement result indicated energetic stress at the meridian endpoints and subsequently on the subordinate metabolic situation of the test person.

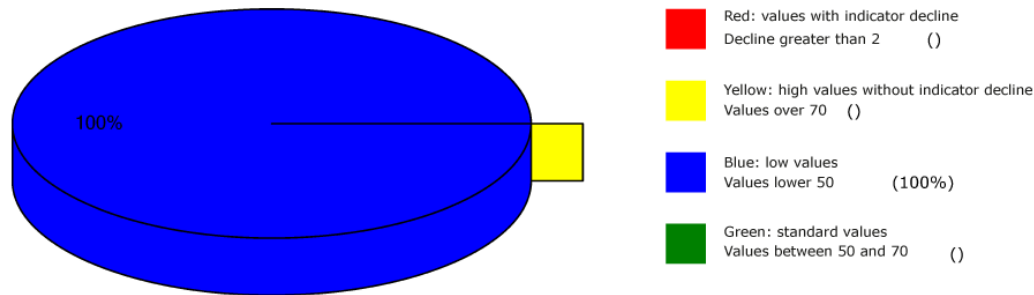
**100 % in the blue area**

**Conclusion:** As the BESA graphs and the pie chart show, all BESA measurement results were in the blue, degenerative range (energy deficiency).





## Overview of BESA measuring



## BESA basic test

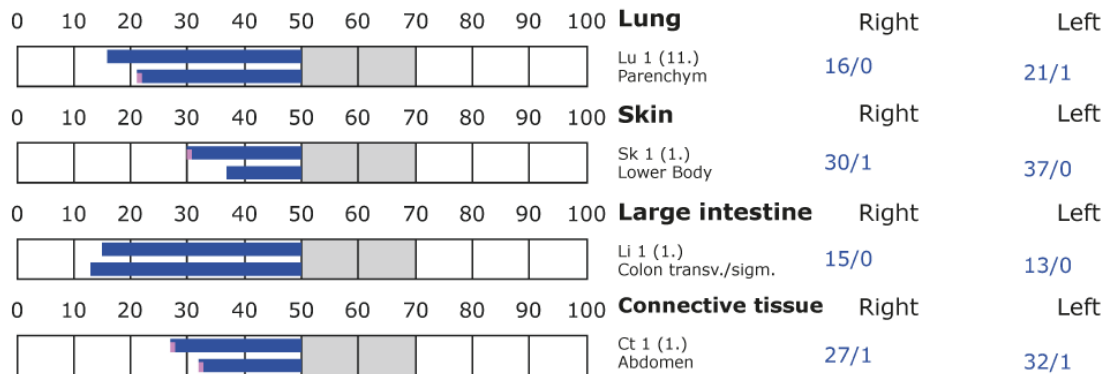
+++ : Indicator decline > 15 Skt.  
++ : Indicator decline 6-15 Skt.  
+ : Indicator decline 3-5 Skt.

T: Total inflammation (>89 Skt.)  
P: Partial inflammation (70-89 Skt.)

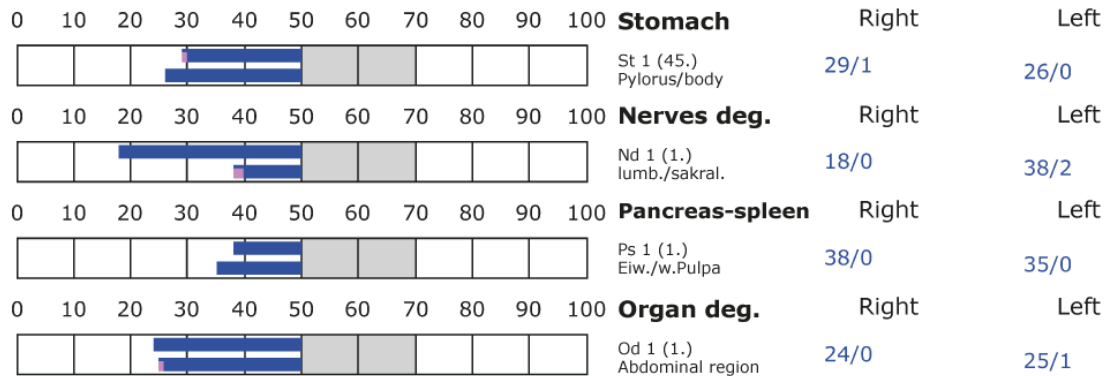
D: Degeneration (< 50 Skt.)

Standard values: (50-70 Skt.)

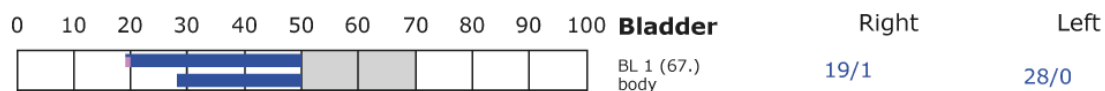
### Element: lu - sk - li - ct



### Element: st - nd - ps - od



### Element: bl - ly - ki - al





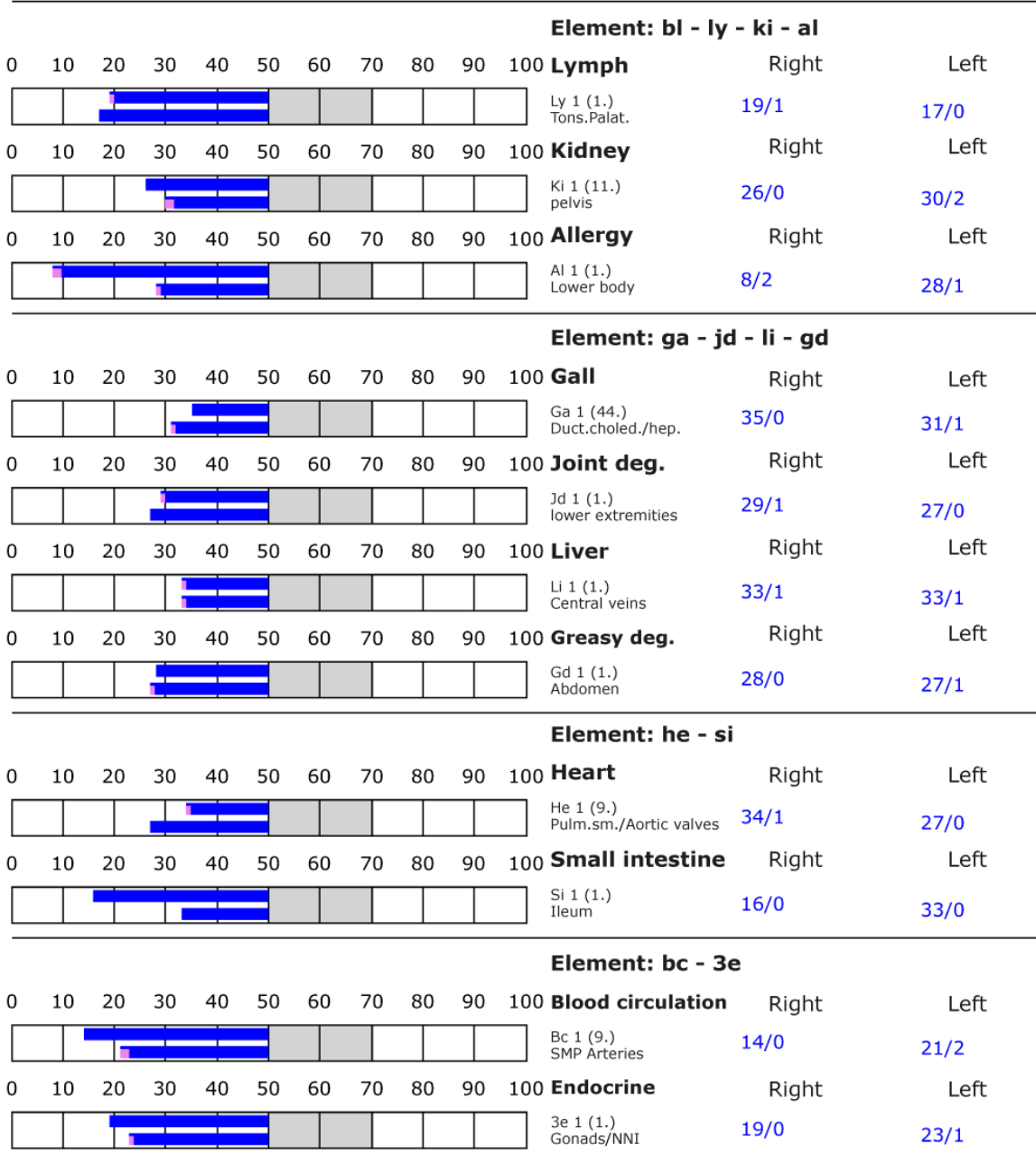
## BESA basic test

+++ : Indicator decline > 15 Skt.  
++ : Indicator decline 6-15 Skt.  
+ : Indicator decline 3-5 Skt.

T: Total inflammation (>89 Skt.)  
P: Partial inflammation (70-89 Skt.)

D: Degeneration (< 50 Skt.)

Standard values: (50-70 Skt.)





## BESA 2 Testing BEFORE

### BESA 2 Testing BEFORE - Proband and EMSF

The rest of the BESA test procedure is concerned with the BESA tests of EMSF on subject 2, whereby W-Lan, smart meter, Bluetooths, cell phone of generation 4G and 5G are introduced into the measurement circuit. In addition, a connecting cell phone is placed on the subject's left thigh. Thus, it is actively in the BESA measurement circuit.

**Goal:** To determine the response of the subject's meridian system within these strong EMSF sources. Determination of the differences compared to the BESA 1 test Basic BEFORE.

BESA Test evaluation P72 4.0

from **11-01-2021 at 16:30 – 16:35** (5 Minutes) page 24 and 25

**result:** The measurement result indicated heavy energetic stress at the meridian endpoints and subsequently on the subordinate metabolic situation of the test person.

**77 % in the blue area**

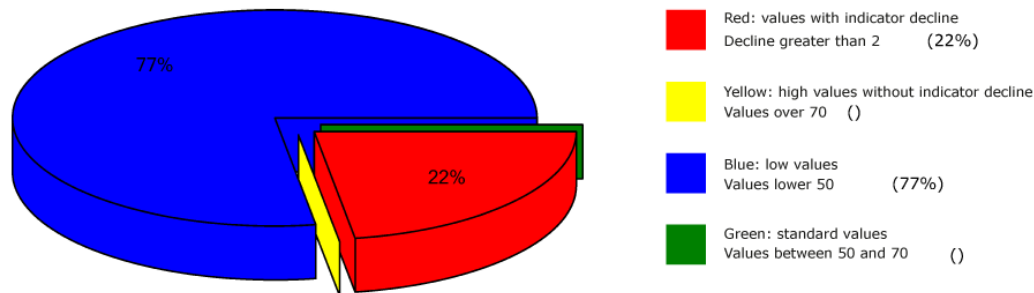
**22 % in the red area**

**1 % in the yellow transition area**

**Conclusion:** As the BESA graphs show, many measurement points are in the degenerative blue area (energy deficiency). However, the picture is dramatic due to the now many measured values in the red area. The BESA test thus results in a significant deterioration of the subject's energetic situation compared to the BESA 1 test Basic BEFORE. The red readings represent a total deregulation of these energy areas. This means that the energy system of the organism would seriously damage the test person in case of permanent influences of such or similar interference fields. For a balancing of these red readings or in other words: for a harmonization of the values, the energy system needs a strong positive impulse from outside. The comparisons of the BESA graphs confirm the change and the stressful influences of the EMSF on the test person.



## Overview of BESA measuring



## BESA basic test

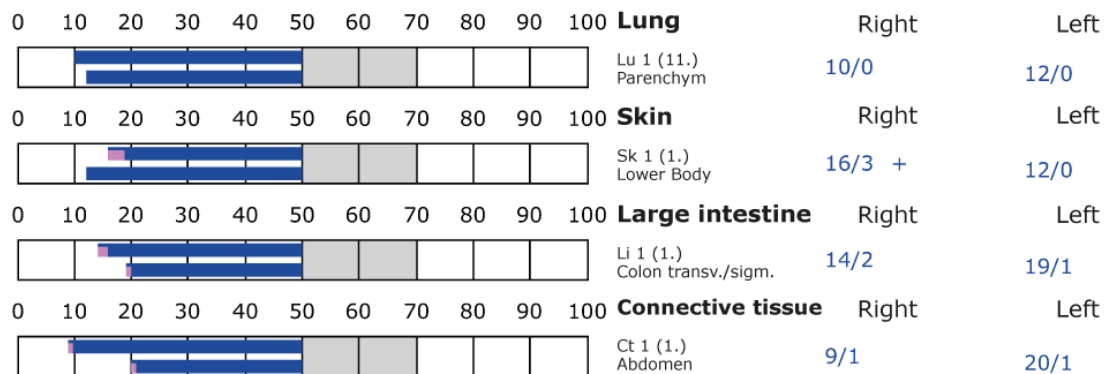
+++ : Indicator decline > 15 Skt.  
++ : Indicator decline 6-15 Skt.  
+ : Indicator decline 3-5 Skt.

T: Total inflammation (>89 Skt.)  
P: Partial inflammation (70-89 Skt.)

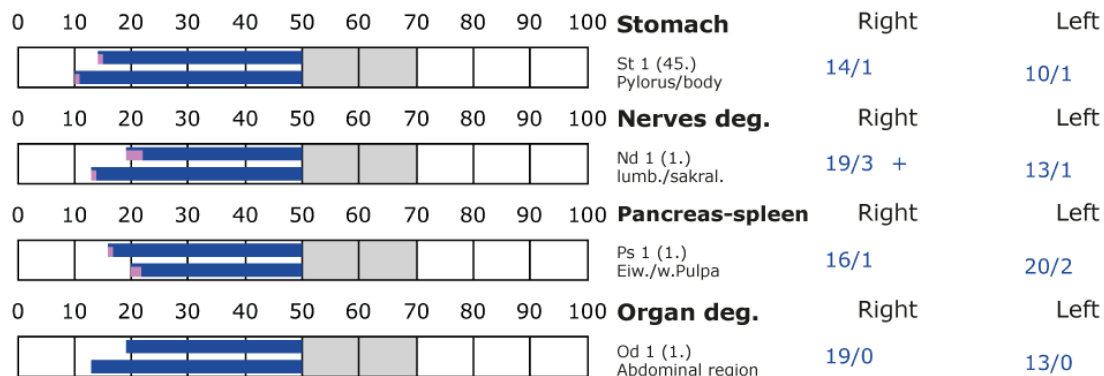
D: Degeneration (< 50 Skt.)

Standard values: (50-70 Skt.)

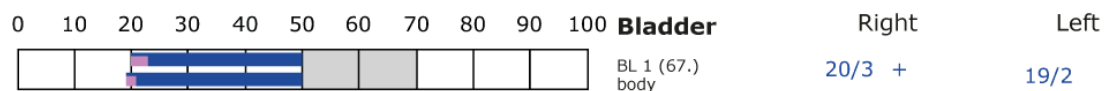
### Element: lu - sk - li - ct



### Element: st - nd - ps - od



### Element: bl - ly - ki - al





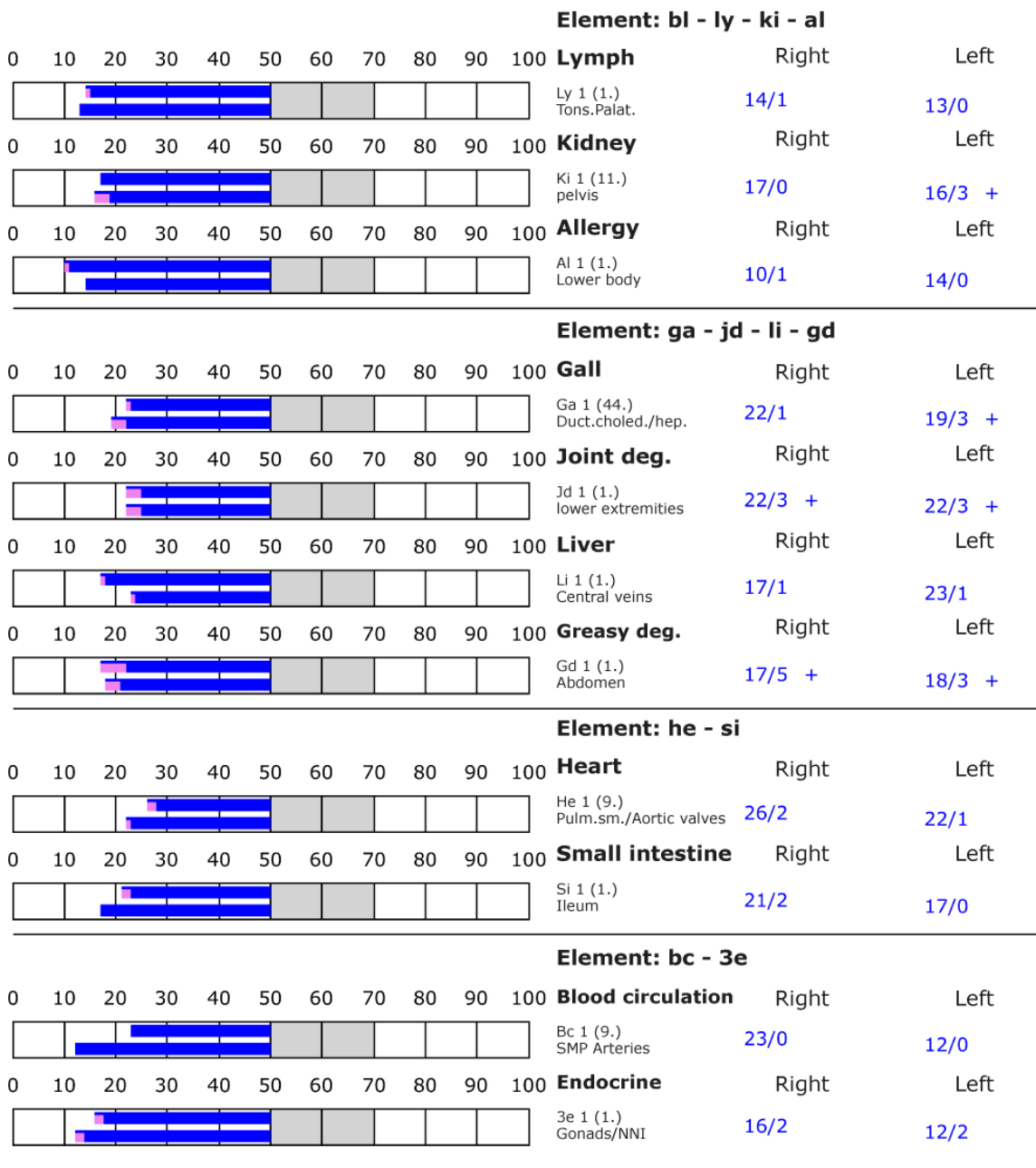
## BESA basic test

+++ : Indicator decline > 15 Skt.  
++ : Indicator decline 6-15 Skt.  
+ : Indicator decline 3-5 Skt.

T: Total inflammation (>89 Skt.)  
P: Partial inflammation (70-89 Skt.)

D: Degeneration (< 50 Skt.)

Standard values: (50-70 Skt.)





## BESA 3 Testing AFTER

### **BESA 3 Testing AFTER - Proband 7 Days after the activation of the „Leela Quantum Bloc“ in the house.**

In the further course of the BESA test, all sources of EMSF are again activated as in the BESA 2 test and the BESA test is performed on test person 2. In this BESA test, too, the connected cell phone is located on the subject's left thigh and thus actively in the measurement circuit.

**Goal:** To determine the reaction of the meridian system to the effect of the "Leela Quantum Block" on the test person? To determine the differences compared to the BESA 1 and 2 tests BEFORE.

BESA Test evaluation P72 4.0

from **18-01-2021 at 16:54 – 17:00** (6 Minutes) page 27 and 28

**result:** The measurement result shows significant improvements at the meridian endpoints or at the energetic state of the test person.

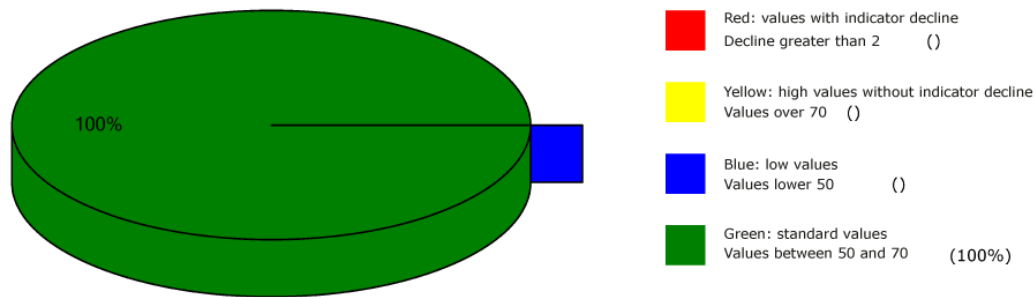
**100 % in the green area**

**Conclusion:** As the BESA graphs show, 7 days after inserting the "Leela Quantum Block" into the house, all measurement points are in the green, optimal and harmonized range (balanced energy system). The BESA test shows a significant improvement of the energy situation in the meridian system of the test person compared to the BESA 1 and BESA 2 tests BEFORE. It is shown that the "Leela Quantum Block" is able to give the red readings (total deregulation) detected in the BESA 2 testing BEFORE a necessary impulse for harmonization (neutralization) into a life-supporting range. The comparisons of the BESA graphs confirm the change and resolution of the stressed (red) acupuncture points on the meridian system of the subject.





## Overview of BESA measuring



## BESA basic test

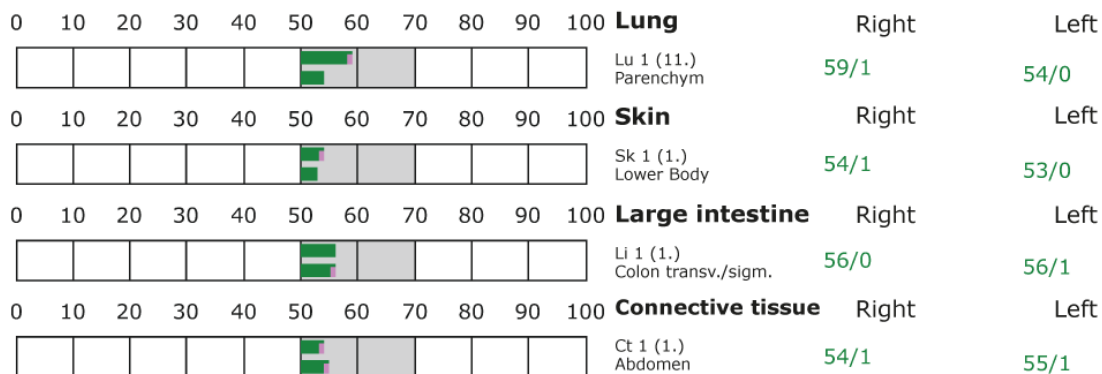
+++ : Indicator decline > 15 Skt.  
++ : Indicator decline 6-15 Skt.  
+ : Indicator decline 3-5 Skt.

T: Total inflammation (>89 Skt.)  
P: Partial inflammation (70-89 Skt.)

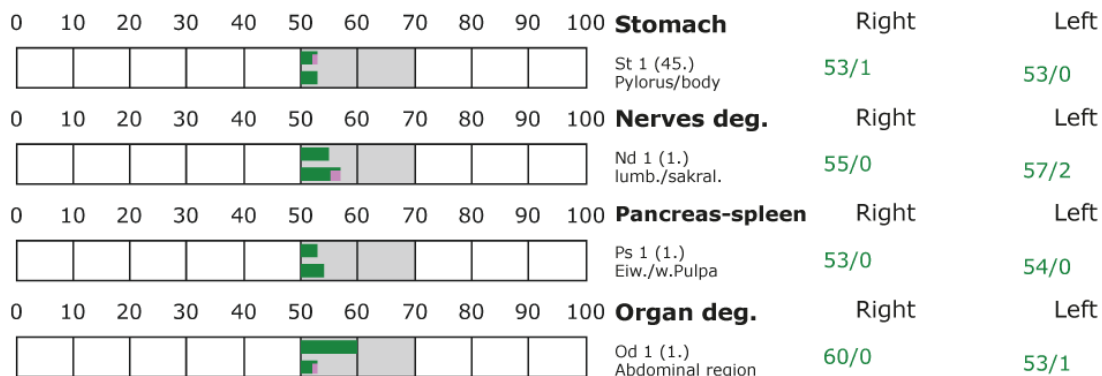
D: Degeneration (< 50 Skt.)

Standard values: (50-70 Skt.)

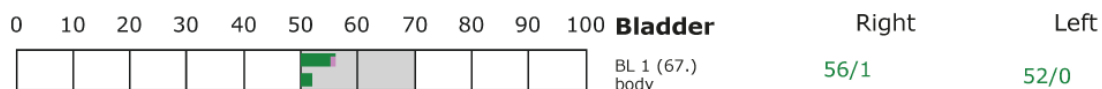
### Element: lu - sk - li - ct



### Element: st - nd - ps - od



### Element: bl - ly - ki - al





## BESA basic test

+++ : Indicator decline > 15 Skt.  
++ : Indicator decline 6-15 Skt.  
+ : Indicator decline 3-5 Skt.

T: Total inflammation (>89 Skt.)  
P: Partial inflammation (70-89 Skt.)

D: Degeneration (< 50 Skt.)

Standard values: (50-70 Skt.)

Element: bl - ly - ki - al													
0	10	20	30	40	50	60	70	80	90	100	<b>Lymph</b>	Right	Left
											Ly 1 (1.) Tons.Palat.	50/0	57/0
0	10	20	30	40	50	60	70	80	90	100	<b>Kidney</b>	Right	Left
											Ki 1 (11.) pelvis	55/0	53/1
0	10	20	30	40	50	60	70	80	90	100	<b>Allergy</b>	Right	Left
											Al 1 (1.) Lower body	52/0	57/0
Element: ga - jd - li - gd													
0	10	20	30	40	50	60	70	80	90	100	<b>Gall</b>	Right	Left
											Ga 1 (44.) Duct.choled./hep.	53/0	53/1
0	10	20	30	40	50	60	70	80	90	100	<b>Joint deg.</b>	Right	Left
											Jd 1 (1.) lower extremities	51/0	53/1
0	10	20	30	40	50	60	70	80	90	100	<b>Liver</b>	Right	Left
											Li 1 (1.) Central veins	53/1	52/0
0	10	20	30	40	50	60	70	80	90	100	<b>Greasy deg.</b>	Right	Left
											Gd 1 (1.) Abdomen	57/1	53/0
Element: he - si													
0	10	20	30	40	50	60	70	80	90	100	<b>Heart</b>	Right	Left
											He 1 (9.) Pulm.sm./Aortic valves	64/1	56/1
0	10	20	30	40	50	60	70	80	90	100	<b>Small intestine</b>	Right	Left
											Si 1 (1.) Ileum	51/0	52/0
Element: bc - 3e													
0	10	20	30	40	50	60	70	80	90	100	<b>Blood circulation</b>	Right	Left
											Bc 1 (9.) SMP Arteries	51/0	57/0
0	10	20	30	40	50	60	70	80	90	100	<b>Endocrine</b>	Right	Left
											3e 1 (1.) Gonads/NNI	51/0	54/0



## Proband 3

### BESA 1 Testing BASIC-BEFORE

#### **BESA 1 BASIC Testing BEFORE as a Status on the Proband 3 (Cat Mia)**

Eva Krankl performs a basic BESA measurement on test person 3 (cat Mia) in the house. All BESA tests are performed at the TING points (40 nail fold points on the fingers and toes).

**Goal:** The creation of a basic test (status) as a representation of the energetic initial situation for all further BESA tests.

BESA Test evaluation P72 4.0

from **11-01-2021 at 16:08 – 16:12** (4 Minutes) page 30 and 31

**result:** The measurement result indicated energetic stress at the meridian endpoints and subsequently on the subordinate metabolic situation of the test person.

**97 % in the blue area**

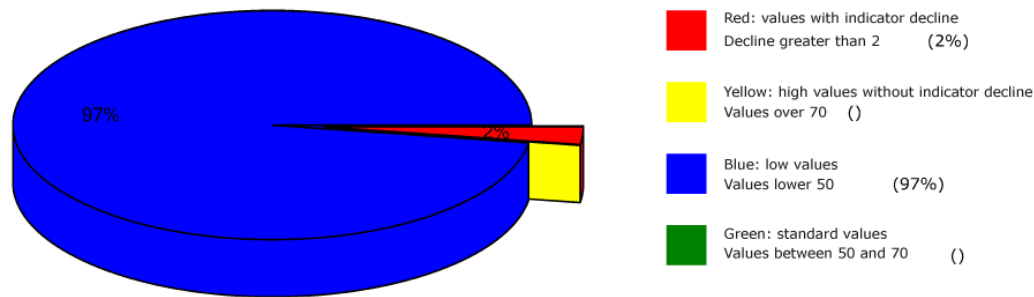
**2 % in the red area**

**1 % in the yellow transition area**

**Conclusion:** As the BESA graphs and the pie chart show, almost all BESA measurement results were in the blue range, 2% even in the red and thus degenerative range (energy deficiency).



## Overview of BESA measuring



## BESA basic test

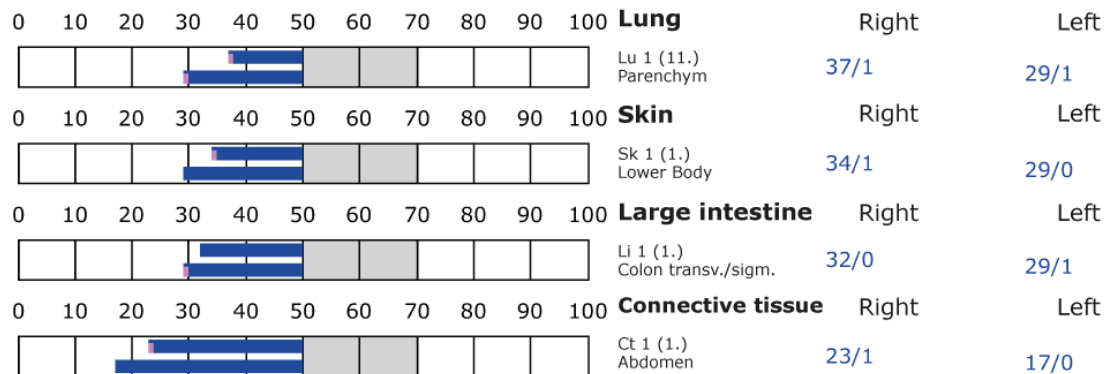
+++ : Indicator decline > 15 Skt.  
++ : Indicator decline 6-15 Skt.  
+ : Indicator decline 3-5 Skt.

T: Total inflammation (>89 Skt.)  
P: Partial inflammation (70-89 Skt.)

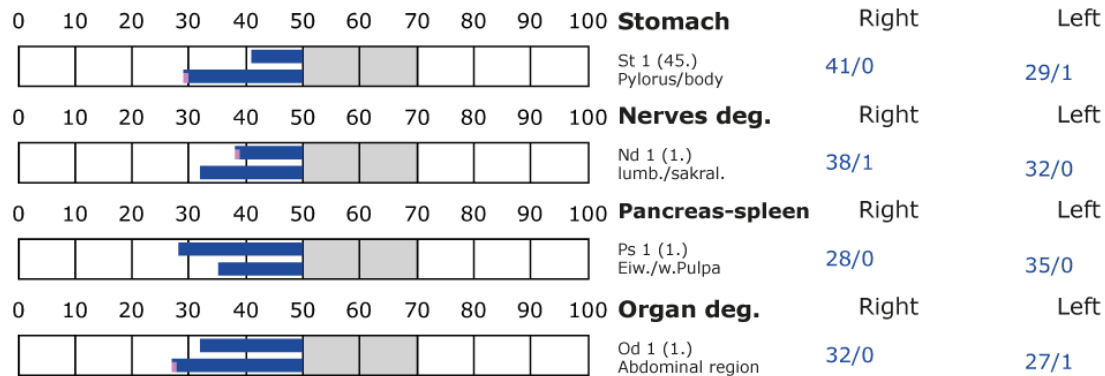
D: Degeneration (< 50 Skt.)

Standard values: (50-70 Skt.)

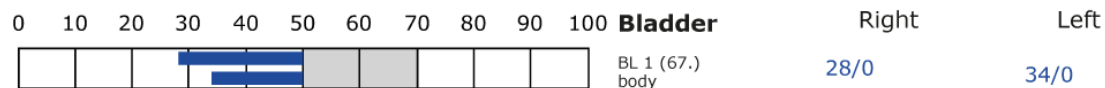
### Element: lu - sk - li - ct



### Element: st - nd - ps - od



### Element: bl - ly - ki - al





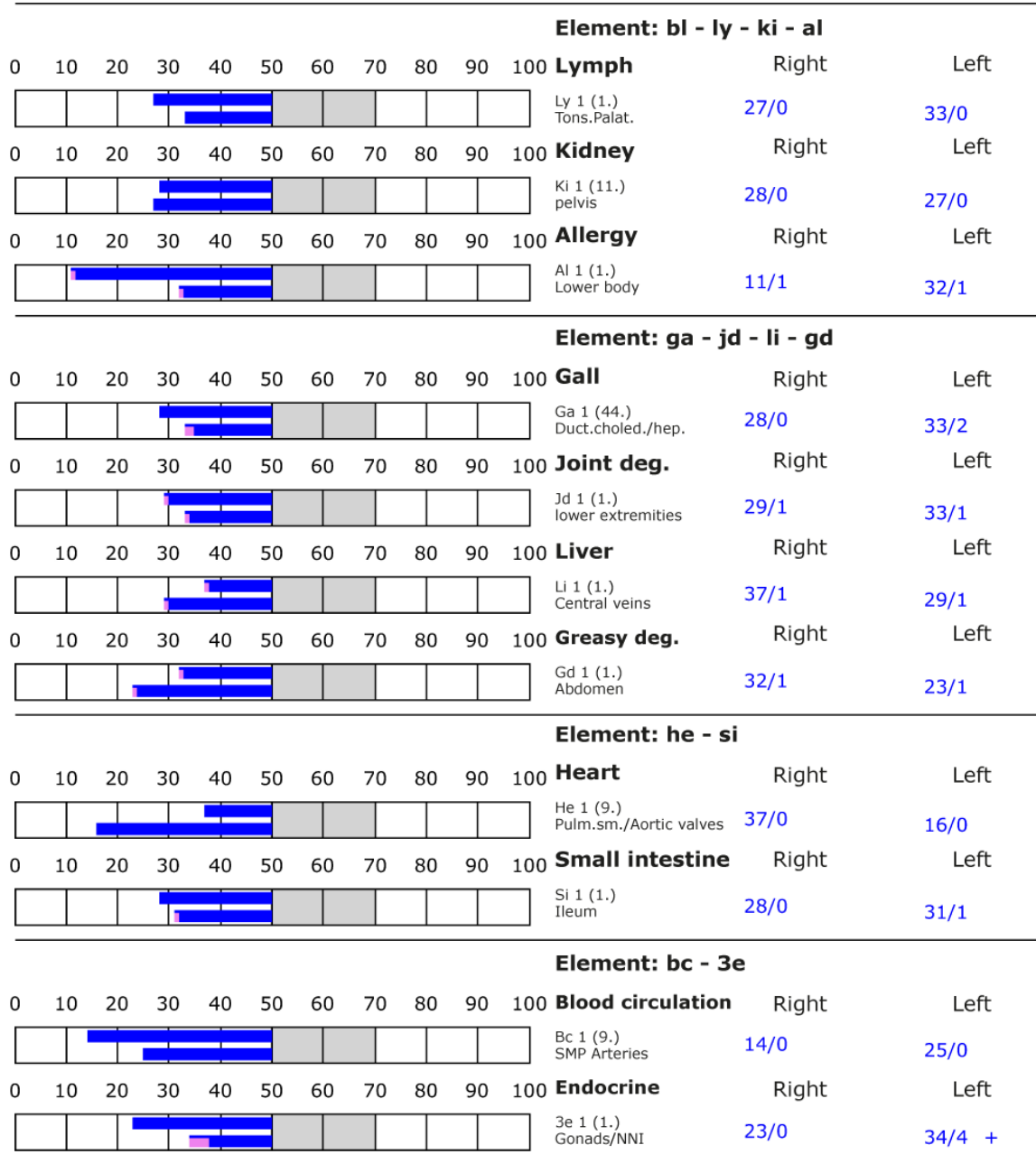
## BESA basic test

+++ : Indicator decline > 15 Skt.  
++ : Indicator decline 6-15 Skt.  
+ : Indicator decline 3-5 Skt.

T: Total inflammation (>89 Skt.)  
P: Partial inflammation (70-89 Skt.)

D: Degeneration (< 50 Skt.)

Standard values: (50-70 Skt.)





## BESA 2 Testing BEFORE

### BESA 2 Testing BEFORE - Proband and EMSF

The rest of the BESA test procedure is concerned with the BESA tests of EMSF on subject 3, whereby wi-fi, smart meter, Bluethoos, cell phone of generation 4G and 5G are introduced into the measurement circuit. In addition, a connecting cell phone is placed in close proximity to the subject (cat Mia). Thus, it is actively in the BESA measurement circuit.

**Goal:** To determine the response of the subject's meridian system within these strong EMSF sources. To determine the differences compared to the BESA 1 test Basic BEFORE.

BESA Test evaluation P72 4.0

from **11-01-2021 at 16:35 – 16:41** (6 Minutes) page 33 and 34

**result:** The measurement result indicated heavy energetic stress at the meridian endpoints and subsequently on the subordinate metabolic situation of the test person.

**92 % in the blue area**

**7 % in the red area**

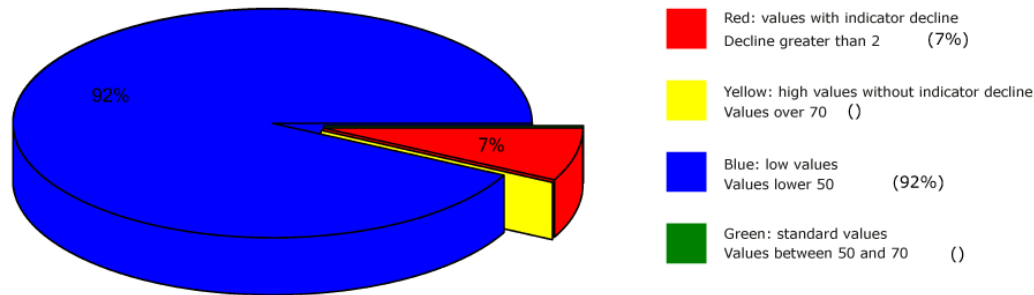
**1 % in the yellow transition area**

**Conclusion:** As the BESA graphs show, many measurement points are in the degenerative blue area (energy deficiency). However, the picture is dramatic due to the now many measured values in the red area. The BESA test thus results in a significant deterioration of the subject's energetic situation compared to the BESA 1 test Basic BEFORE. The red measured values represent a total deregulation of these energy areas. This means that the energy system of the organism would seriously damage the test person in case of permanent influences of such or similar interference fields. For a balancing of these red readings or in other words: for a harmonization of the values, the energy system needs a strong positive impulse from outside. The comparisons of the BESA graphs confirm the change and the stressful influences of the EMSF on the test person.





## Overview of BESA measuring



## BESA basic test

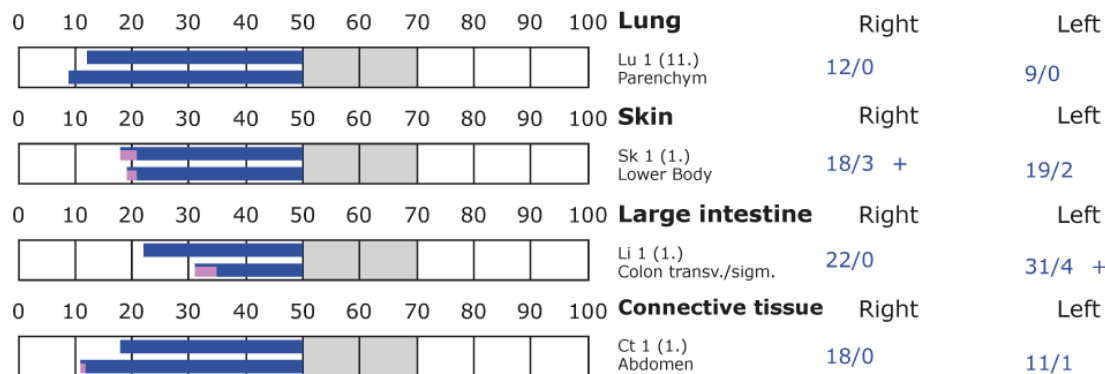
+++ : Indicator decline > 15 Skt.  
++ : Indicator decline 6-15 Skt.  
+ : Indicator decline 3-5 Skt.

T: Total inflammation (>89 Skt.)  
P: Partial inflammation (70-89 Skt.)

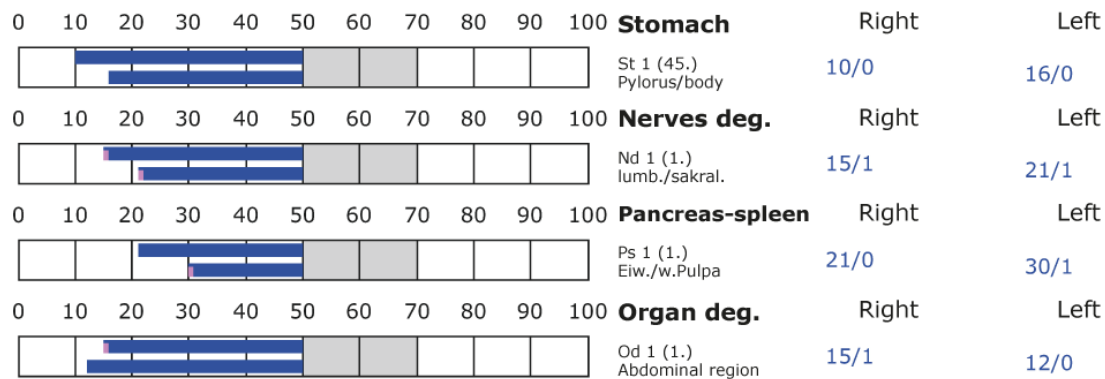
D: Degeneration (< 50 Skt.)

Standard values: (50-70 Skt.)

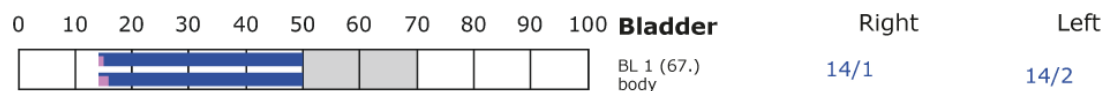
### Element: lu - sk - li - ct



### Element: st - nd - ps - od



### Element: bl - ly - ki - al





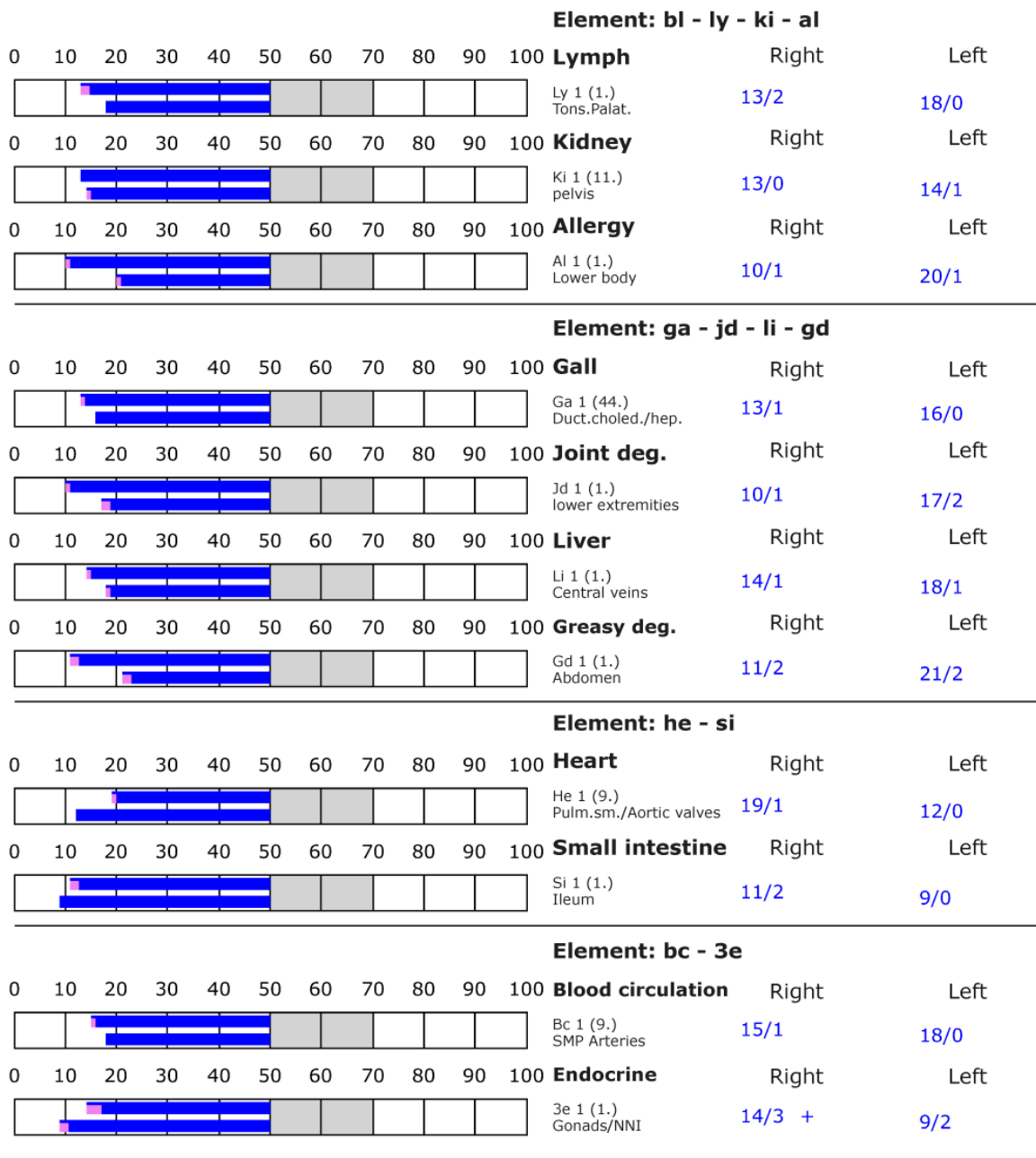
## BESA basic test

+++ Indicator decline > 15 Skt.  
++ Indicator decline 6-15 Skt.  
+ Indicator decline 3-5 Skt.

T: Total inflammation (>89 Skt.)  
P: Partial inflammation (70-89 Skt.)

D: Degeneration (< 50 Skt.)

Standard values: (50-70 Skt.)





## BESA 3 Testing AFTER

### **BESA 3 Testing AFTER - Proband 7 Days after activation of the „Leela Quantum Bloc“ in the house.**

In the further course of the BESA test, all sources of EMSF are activated again as in the BESA 2 test and the BESA test is performed on test person 3 (cat Mia). In this BESA test, too, the connected cell phone is in the immediate vicinity of the test subject (cat MIA) and thus actively in the measurement circuit.

**Goal:** To determine the reaction of the meridian system to the effect of the "Leela Quantum Bloc" on the test person? Determination of the differences compared to the BESA 1 and 2 tests BEFORE.

#### BESA Test evaluation P72 4.0

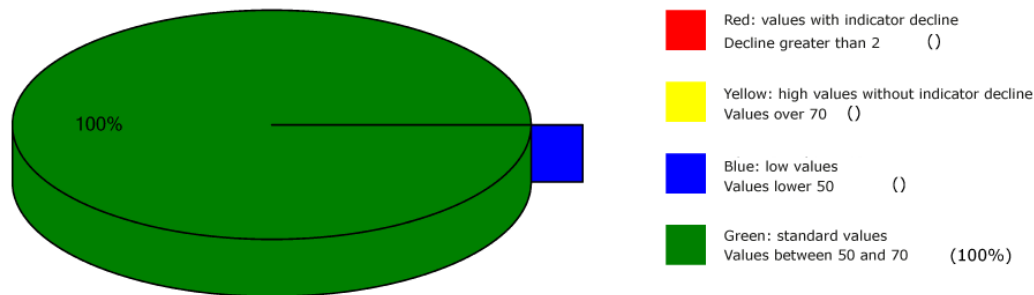
from **18-01-2021 at 17:00 – 17:05** (5 Minutes) page 36 and 37

**result:** The measurement result shows significant improvements at the meridian endpoints or at the energetic state of the test person.

**100 % in the green area**

**Conclusion:** As the BESA graphs show, 7 days after inserting the "Leela Quantum Bloc" into the house, all measurement points are in the green, optimal and harmonized range (balanced energy system). The BESA test shows a significant improvement of the energy situation in the meridian system of the test person compared to the BESA 1 and BESA 2 tests BEFORE. It is shown that the "Leela Quantum Bloc" is able to give the red readings (total deregulation) detected in the BESA 2 testing BEFORE a necessary impulse for harmonization (neutralization) into a life-supporting range. The comparisons of the BESA graphs confirm the change and resolution of the stressed (red) acupuncture points on the meridian system of the subject (cat Mia).

## Overview of BESA measuring



## BESA basic test

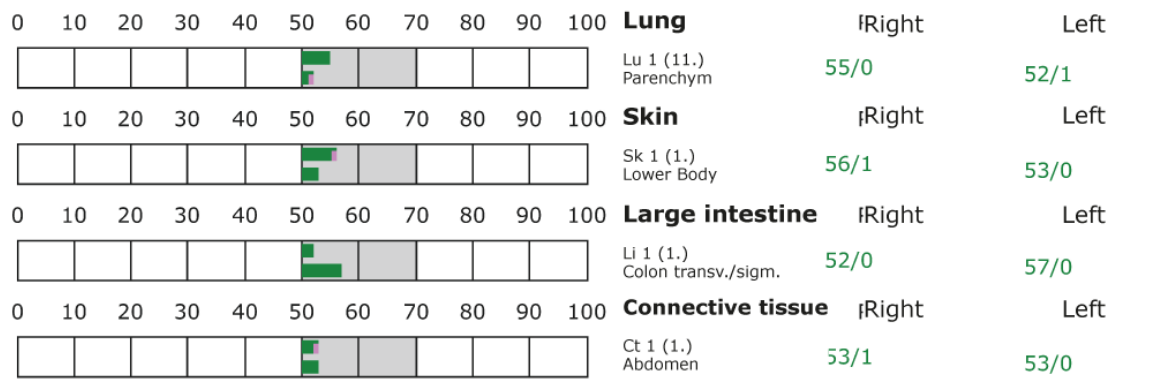
- +++ : Indicator decline > 15 Skt.
- ++ : Indicator decline 6-15 Skt.
- +: Indicator decline 3-5 Skt.

T: Total inflammation (>89 Skt.)  
P: Partial inflammation (70-89 Skt.)

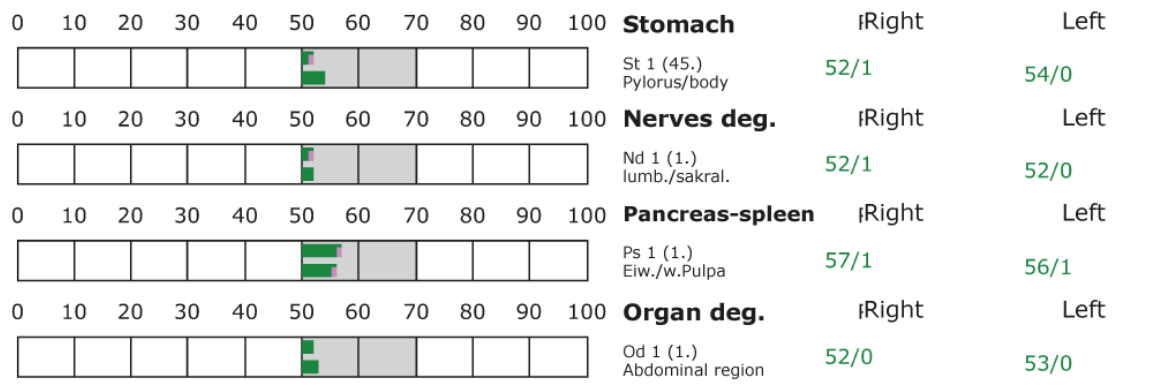
D: Degeneration (< 50 Skt.)

Standard values: (50-70 Skt.)

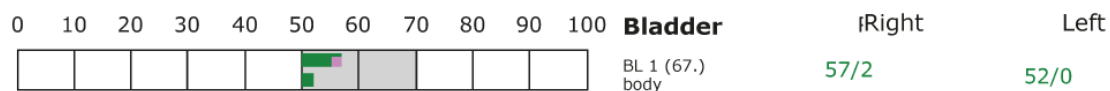
**Element: lu - sk - li - ct**



**Element: st - nd - ps - od**



**Element: bl - ly - ki - al**





## BESA basic test

+++ : Indicator decline > 15 Skt.  
++ : Indicator decline 6-15 Skt.  
+ : Indicator decline 3-5 Skt.

T: Total inflammation (>89 Skt.)  
P: Partial inflammation (70-89 Skt.)

D: Degeneration (< 50 Skt.)

Standard values: (50-70 Skt.)

Element: bl - ly - ki - al													
0	10	20	30	40	50	60	70	80	90	100	<b>Lymph</b>	Right	Left
											Ly 1 (1.) Tons.Palat.	57/0	52/0
0	10	20	30	40	50	60	70	80	90	100	<b>Kidney</b>	Right	Left
											Ki 1 (11.) pelvis	59/1	52/0
0	10	20	30	40	50	60	70	80	90	100	<b>Allergy</b>	Right	Left
											Al 1 (1.) Lower body	51/1	53/0
Element: ga - jd - li - gd													
0	10	20	30	40	50	60	70	80	90	100	<b>Gall</b>	Right	Left
											Ga 1 (44.) Duct.choled./hep.	53/1	54/1
0	10	20	30	40	50	60	70	80	90	100	<b>Joint deg.</b>	Right	Left
											Jd 1 (1.) lower extremities	52/1	58/2
0	10	20	30	40	50	60	70	80	90	100	<b>Liver</b>	Right	Left
											Li 1 (1.) Central veins	54/1	54/0
0	10	20	30	40	50	60	70	80	90	100	<b>Greasy deg.</b>	Right	Left
											Gd 1 (1.) Abdomen	54/0	59/1
Element: he - si													
0	10	20	30	40	50	60	70	80	90	100	<b>Heart</b>	Right	Left
											He 1 (9.) Pulm.sm./Aortic valves	50/0	52/0
0	10	20	30	40	50	60	70	80	90	100	<b>Small intestine</b>	Right	Left
											Si 1 (1.) Ileum	52/0	57/0
Element: bc - 3e													
0	10	20	30	40	50	60	70	80	90	100	<b>Blood circulation</b>	Right	Left
											Bc 1 (9.) SMP Arteries	52/0	55/0
0	10	20	30	40	50	60	70	80	90	100	<b>Endocrine</b>	Right	Left
											3e 1 (1.) Gonads/NNI	52/0	54/1



## Proband 4

### BESA 1 Testing BASIC-BEFORE

#### **BESA 1 BASIC Testing BEFORE as a Status on the Proband 4 (rabbit Paul)**

Eva Krankl performs a basic BESA measurement on test person 3 (Paul the rabbit) in the house. All BESA tests are performed at the TING points (40 nail fold points on the fingers and toes).

**Goal:** The creation of a basic test (status) as a representation of the energetic initial situation for all further BESA tests.

BESA Test evaluation P72 4.0

from **11-01-2021 at 16:13 – 16:17** (4 Minutes) page 39 and 40

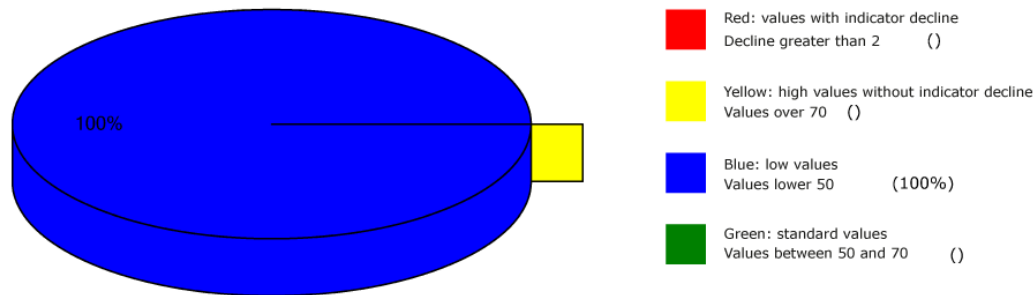
**result:** The measurement result indicated energetic stress at the meridian endpoints and subsequently on the subordinate metabolic situation of the test person.

**100 % in the blue area**

**Conclusion:** As the BESA graphs and the pie chart show, all BESA measurement results were in the blue and thus degenerative range (energy deficiency).



## Overview of BESA measuring



## BESA basic test

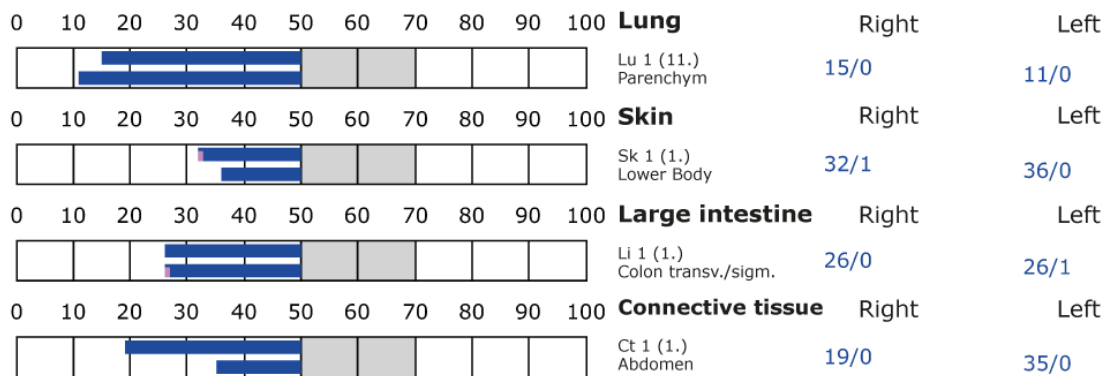
+++ : Indicator decline > 15 Skt.  
++ : Indicator decline 6-15 Skt.  
+ : Indicator decline 3-5 Skt.

T: Total inflammation (>89 Skt.)  
P: Partial inflammation (70-89 Skt.)

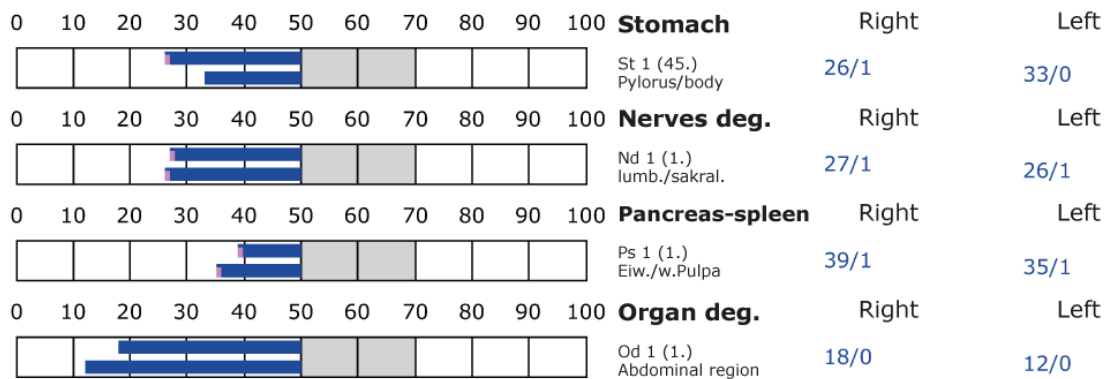
D: Degeneration (< 50 Skt.)

Standard values: (50-70 Skt.)

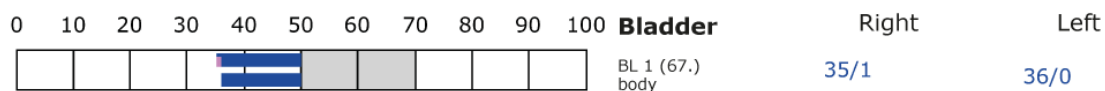
### Element: lu - sk - li - ct



### Element: st - nd - ps - od



### Element: bl - ly - ki - al





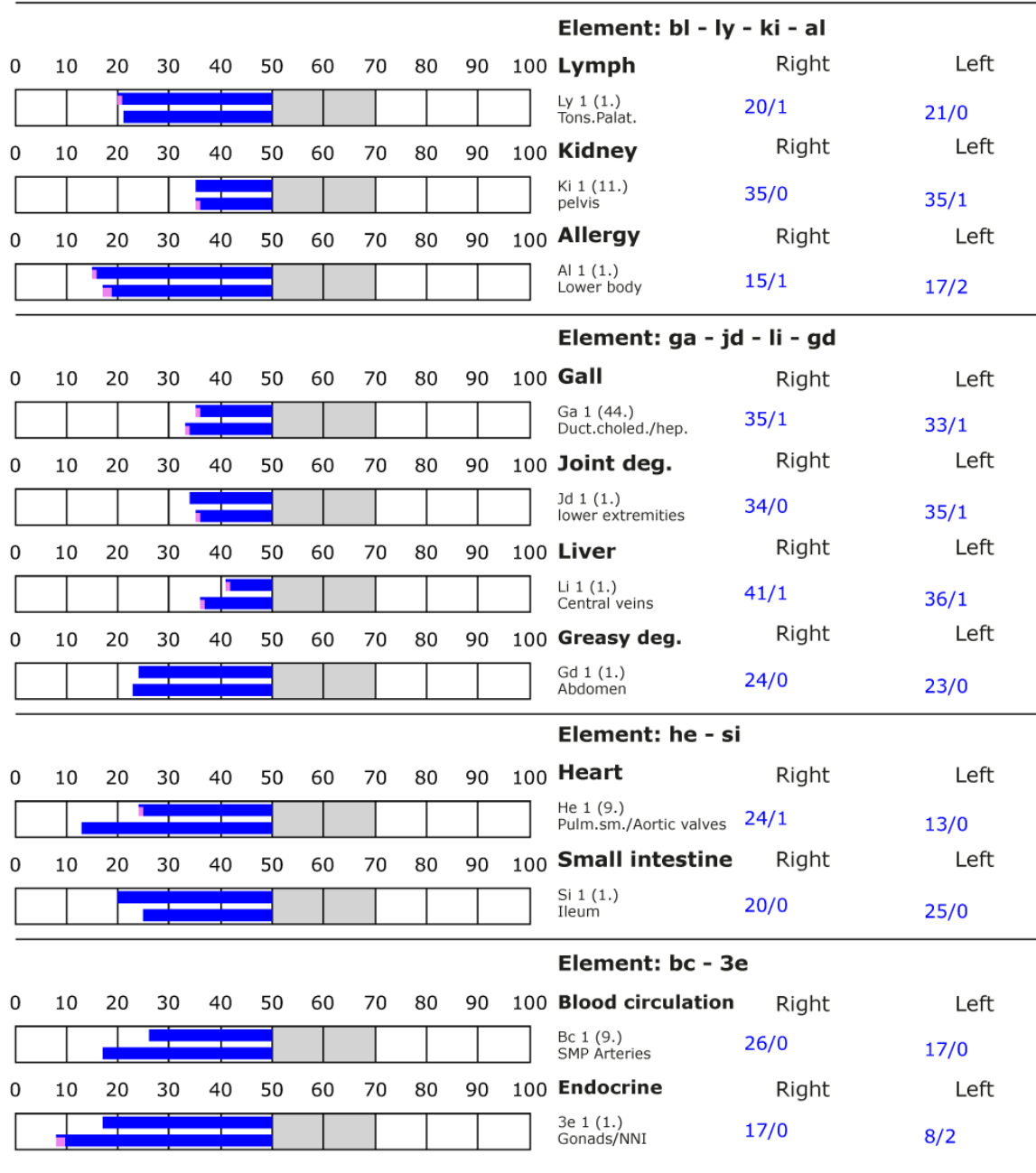
## BESA basic test

+++ : Indicator decline > 15 Skt.  
++ : Indicator decline 6-15 Skt.  
+ : Indicator decline 3-5 Skt.

T: Total inflammation (>89 Skt.)  
P: Partial inflammation (70-89 Skt.)

D: Degeneration (< 50 Skt.)

Standard values: (50-70 Skt.)







## BESA 2 Testing BEFORE

### BESA 2 Testing BEFORE - Proband and EMSF

The rest of the BESA test procedure is concerned with the BESA tests of EMSF on subject 4, whereby wi-fi, smart meter, Bluethoos, cell phone of generation 4G and 5G are introduced into the measurement circuit. In addition, a cell phone in connection is placed in the immediate vicinity of the test person (Paul the rabbit). Thus, it is actively in the BESA measurement circuit.

**Goal:** To determine the response of the subject's meridian system within these strong EMSF sources. To determine the differences compared to the BESA 1 test Basic BEFORE.

#### BESA Test evaluation P72 4.0

from **11-01-2021 at 16:41 – 16:46** (5 Minutes) page 42 and 43

**result:** The measurement result indicated heavy energetic stresses at the meridian endpoints and subsequently on the subordinate metabolic situation of the test person.

**92 % in the blue area**

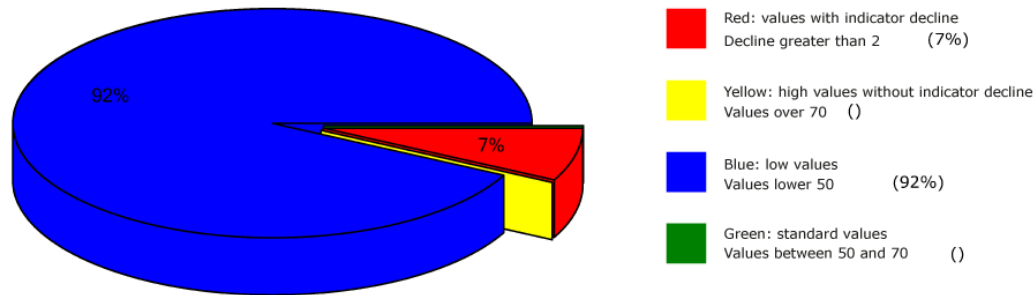
**7 % in the red area**

**1 % in the yellow transition area**

**Conclusion:** As the BESA graphs show, many measurement points are in the degenerative blue area (energy deficiency). However, the picture is dramatic due to the now many measured values in the red area. The BESA test thus results in a significant deterioration of the subject's energetic situation compared to the BESA 1 test Basic BEFORE. The red measured values represent a total deregulation of these energy areas. This means that the energy system of the organism would seriously damage the test person in case of permanent influences of such or similar interference fields. For a balancing of these red readings or in other words: for a harmonization of the values, the energy system needs a strong positive impulse from outside. The comparisons of the BESA graphs confirm the change and the stressful influences of the EMSF on the test person.



## Overview of BESA measuring



## BESA basic test

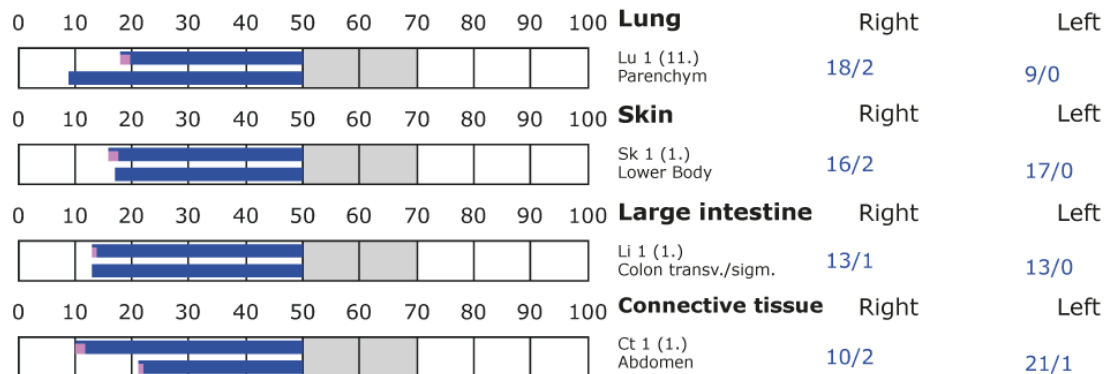
+++ : Indicator decline > 15 Skt.  
++ : Indicator decline 6-15 Skt.  
+ : Indicator decline 3-5 Skt.

T: Total inflammation (>89 Skt.)  
P: Partial inflammation (70-89 Skt.)

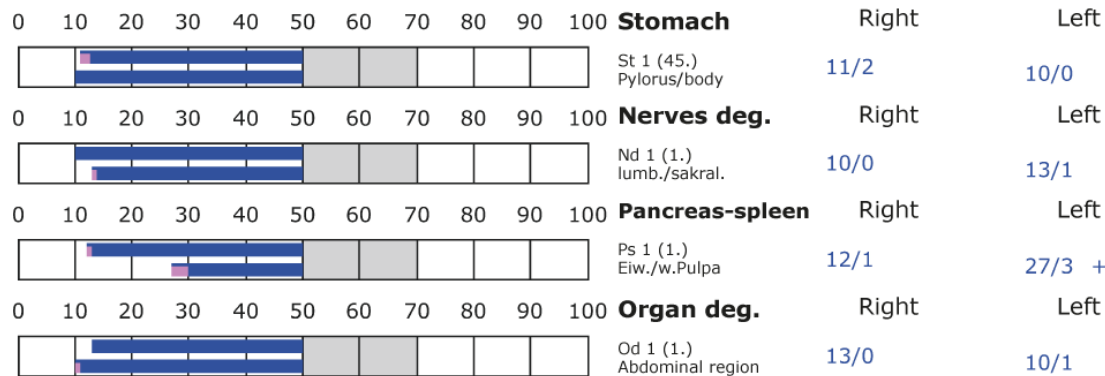
D: Degeneration (< 50 Skt.)

Standard values: (50-70 Skt.)

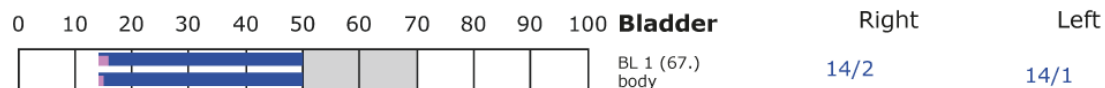
### Element: lu - sk - li - ct



### Element: st - nd - ps - od



### Element: bl - ly - ki - al





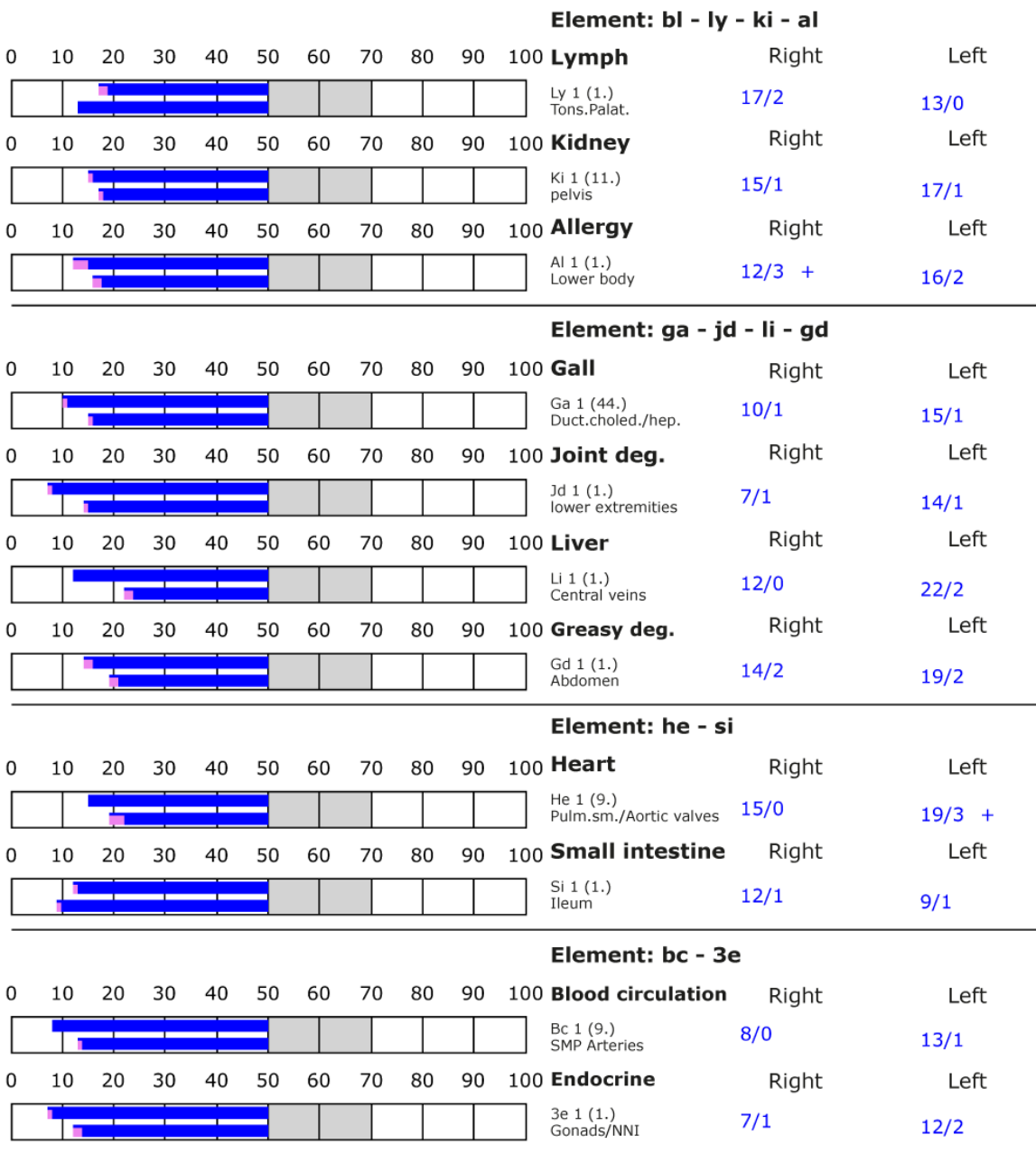
## BESA basic test

+++ : Indicator decline > 15 Skt.  
++ : Indicator decline 6-15 Skt.  
+ : Indicator decline 3-5 Skt.

T: Total inflammation (>89 Skt.)  
P: Partial inflammation (70-89 Skt.)

D: Degeneration (< 50 Skt.)

Standard values: (50-70 Skt.)





## BESA 3 Testing AFTER

### **BESA 3 Testing AFTER - Proband 7 Days after the activation of the „Leela Quantum Bloc“ in the house.**

In the further course of the BESA test, all sources of EMSF are again activated as in the BESA 2 test and the BESA test is performed on test subject 4 (rabbit Paul). In this BESA test, too, the connected cell phone is in the immediate vicinity of the test subject (Paul the rabbit) and thus active in the measurement circuit.

**Goal:** To determine the reaction of the meridian system to the effect of the "Leela Quantum Bloc" on the test person? Determination of the differences compared to the BESA 1 and 2 tests BEFORE.

#### BESA Test evaluation P72 4.0

from **18-01-2021 at 17:06 – 17:11** (5 Minutes) page 45 and 46

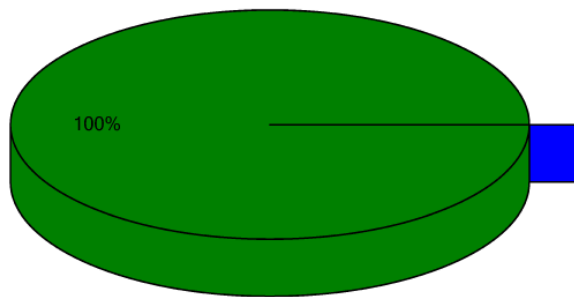
**result:** The measurement result shows significant improvements at the meridian endpoints or at the energetic state of the test person.

**100 % in the green area**

**Conclusion:** As the BESA graphs show, 7 days after inserting the "Leela Quantum Bloc" into the house, all measurement points are in the green, optimal and harmonized range (balanced energy system). The BESA test shows a significant improvement of the energy situation in the meridian system of the test person compared to the BESA 1 and BESA 2 tests BEFORE. It is shown that the "Leela Quantum Bloc" is able to give the red readings (total deregulation) detected in the BESA 2 testing BEFORE a necessary impulse for harmonization (neutralization) into a life-supporting range. The comparisons of the BESA graphs confirm the change and resolution of the stressed (red) acupuncture points on the meridian system of the test person (Paul the rabbit).



## Overview of BESA measuring



- Red: values with indicator decline  
Decline greater than 2 ( )
- Yellow: high values without indicator decline  
Values over 70 ( )
- Blue: low values  
Values lower 50 ( )
- Green: standard values  
Values between 50 and 70 (100%)

## BESA basic test

+++ : Indicator decline > 15 Skt.  
++ : Indicator decline 6-15 Skt.  
+ : Indicator decline 3-5 Skt.

T: Total inflammation (>89 Skt.)  
P: Partial inflammation (70-89 Skt.)

D: Degeneration (< 50 Skt.)

Standard values: (50-70 Skt.)

### Element: lu - sk - li - ct

0	10	20	30	40	50	60	70	80	90	100	Lung	Right	Left
											Lu 1 (11.) Parenchym	58/1	55/1
											Sk 1 (1.) Lower Body	55/1	53/0
											Li 1 (1.) Colon transv./sigm.	52/0	54/0
											Ct 1 (1.) Abdomen	53/0	53/0

### Element: st - nd - ps - od

0	10	20	30	40	50	60	70	80	90	100	Stomach	Right	Left
											St 1 (45.) Pylorus/body	51/1	56/1
											Nd 1 (1.) lumb./sakral.	54/1	61/1
											Ps 1 (1.) Eiw./w.Pulpa	53/0	60/0
											Od 1 (1.) Abdominal region	53/0	51/0

### Element: bl - ly - ki - al

0	10	20	30	40	50	60	70	80	90	100	Bladder	Right	Left
											BL 1 (67.) body	58/0	54/0



## BESA basic test

+++ : Indicator decline > 15 Skt.  
++ : Indicator decline 6-15 Skt.  
+ : Indicator decline 3-5 Skt.

T: Total inflammation (>89 Skt.)  
P: Partial inflammation (70-89 Skt.)

D: Degeneration (< 50 Skt.)

Standard values: (50-70 Skt.)

Element: bl - ly - ki - al													
0	10	20	30	40	50	60	70	80	90	100	<b>Lymph</b>	Right	Left
											Ly 1 (1.) Tons.Palat.	53/0	60/1
0	10	20	30	40	50	60	70	80	90	100	<b>Kidney</b>	Right	Left
											Ki 1 (11.) pelvis	53/0	53/1
0	10	20	30	40	50	60	70	80	90	100	<b>Allergy</b>	Right	Left
											Al 1 (1.) Lower body	51/0	52/0
Element: ga - jd - li - gd													
0	10	20	30	40	50	60	70	80	90	100	<b>Gall</b>	Right	Left
											Ga 1 (44.) Duct.choled./hep.	55/0	53/0
0	10	20	30	40	50	60	70	80	90	100	<b>Joint deg.</b>	Right	Left
											Jd 1 (1.) lower extremities	54/0	54/0
0	10	20	30	40	50	60	70	80	90	100	<b>Liver</b>	Right	Left
											Li 1 (1.) Central veins	53/0	55/1
0	10	20	30	40	50	60	70	80	90	100	<b>Greasy deg.</b>	Right	Left
											Gd 1 (1.) Abdomen	54/0	53/0
Element: he - si													
0	10	20	30	40	50	60	70	80	90	100	<b>Heart</b>	Right	Left
											He 1 (9.) Pulm.sm./Aortic valves	53/1	53/1
0	10	20	30	40	50	60	70	80	90	100	<b>Small intestine</b>	Right	Left
											Si 1 (1.) Ileum	60/1	56/1
Element: bc - 3e													
0	10	20	30	40	50	60	70	80	90	100	<b>Blood circulation</b>	Right	Left
											Bc 1 (9.) SMP Arteries	53/1	60/0
0	10	20	30	40	50	60	70	80	90	100	<b>Endocrine</b>	Right	Left
											3e 1 (1.) Gonads/NNI	55/1	58/0



## Proband 5

### BESA 1 Testing BASIC-BEFORE

#### **BESA 1 BASIC Testing BEFORE as a Status on the 2- family house**

Eva Krankl performs a basic BESA measurement in the house to question the bioenergetic general condition of the house. All BESA tests are performed at the TING points (40 nail fold points on the fingers and toes), whereby Mrs. Eva Krankl stands as a surrogate for the house.

**Goal:** The creation of a basic test (status) as a representation of the energetic initial situation for all further BESA tests of the house.

BESA Test evaluation P72 4.0

from **11-01-2021 at 17:13 – 17:17** (4 Minutes) page 48 and 49

**result:** The measurement result indicated nevertheless considerable energetic loads at the meridian endpoints of the testing person Eva Krankl as a surrogate (substitute) for the house.

**95 % in the blue area**

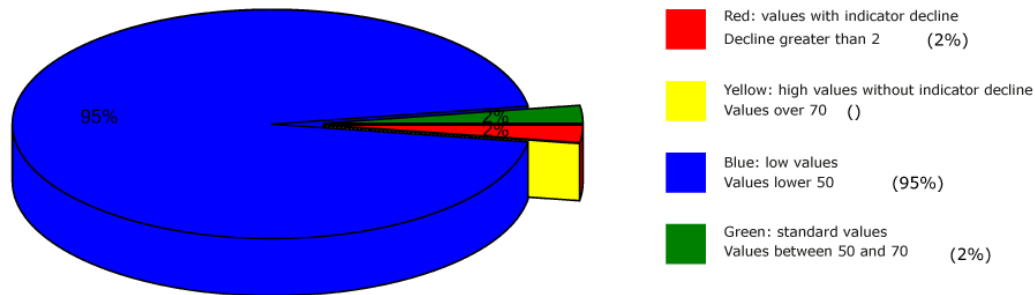
**2 % in the red area**

**1 % in the yellow transition area**

**Conclusion:** As the BESA graphs and the pie chart show, all BESA measurement results were in the blue range, 2% even in the red and thus degenerative range (energy deficiency).



## Overview of BESA measuring



## BESA basic test

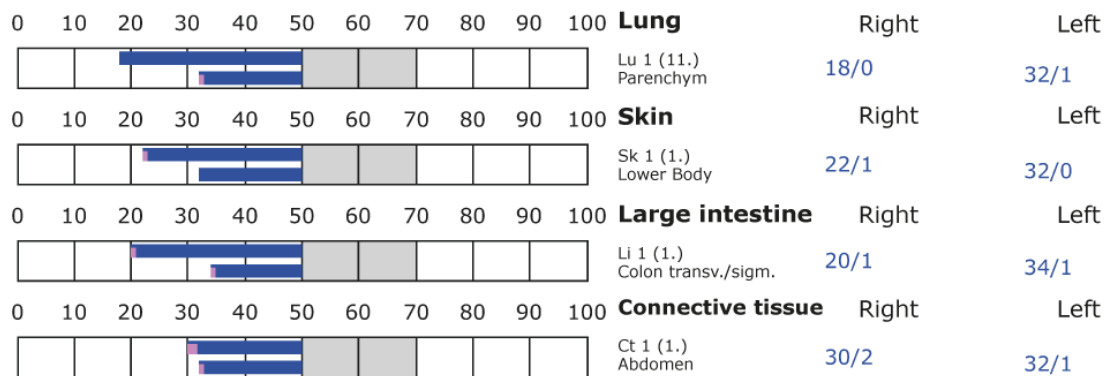
+++ : Indicator decline > 15 Skt.  
++ : Indicator decline 6-15 Skt.  
+ : Indicator decline 3-5 Skt.

T: Total inflammation (>89 Skt.)  
P: Partial inflammation (70-89 Skt.)

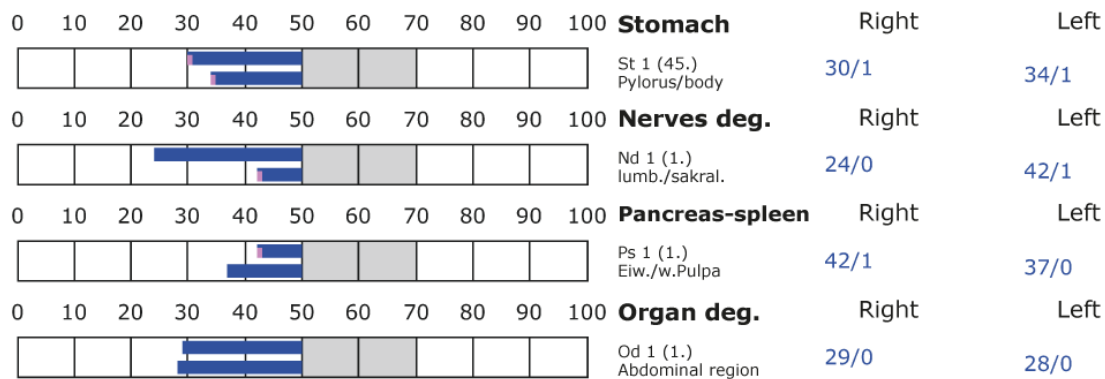
D: Degeneration (< 50 Skt.)

Standard values: (50-70 Skt.)

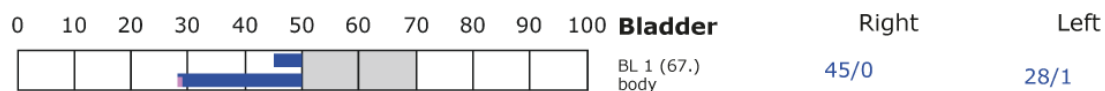
### Element: lu - sk - li - ct



### Element: st - nd - ps - od



### Element: bl - ly - ki - al







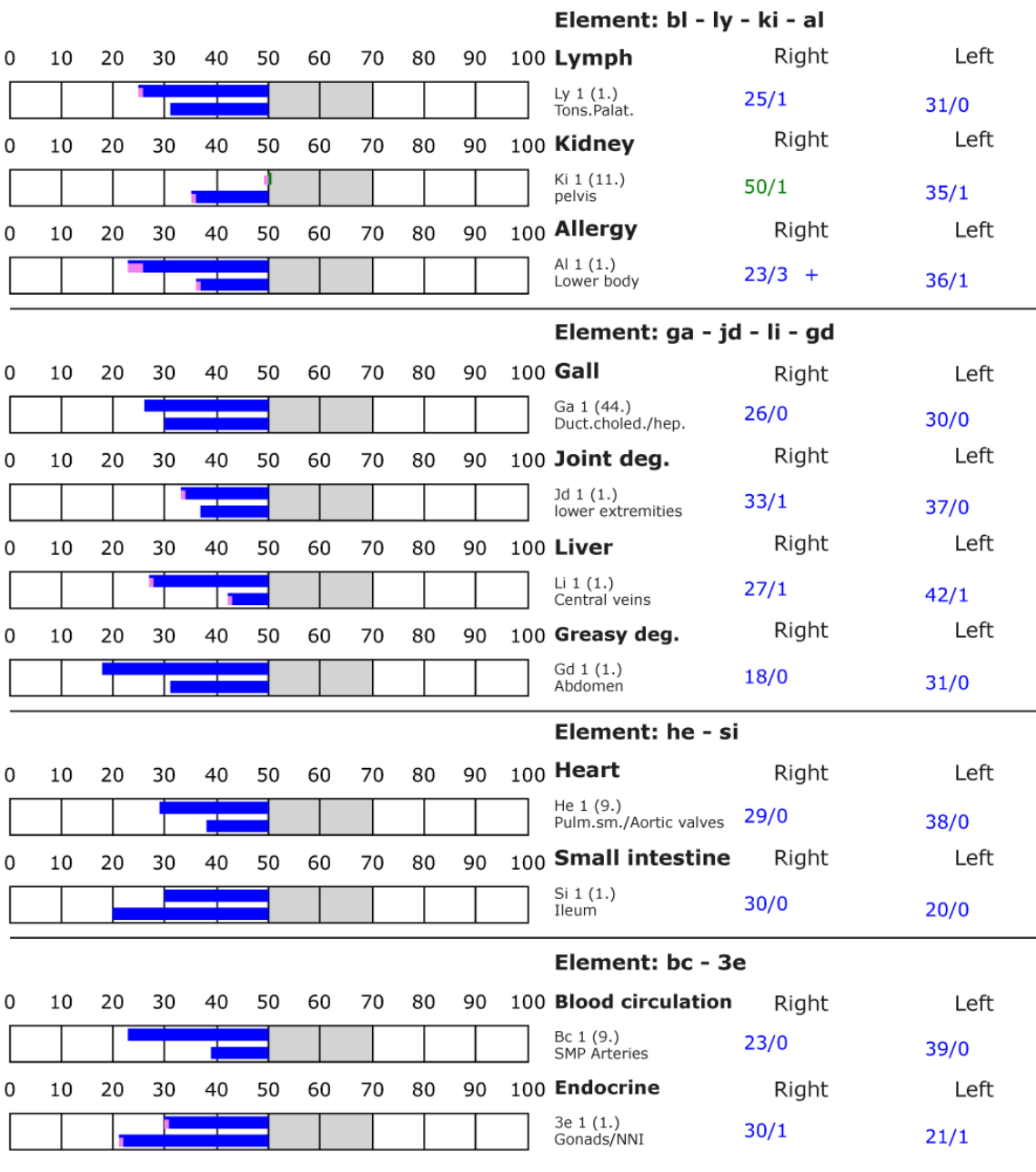
## BESA basic test

+++ : Indicator decline > 15 Skt.  
++ : Indicator decline 6-15 Skt.  
+ : Indicator decline 3-5 Skt.

T: Total inflammation (>89 Skt.)  
P: Partial inflammation (70-89 Skt.)

D: Degeneration (< 50 Skt.)

Standard values: (50-70 Skt.)





## BESA 2 Testing AFTERWARD

### **BESA 3 Testing AFTERWARD - Proband 7 days after activation on the „Leela Quantum Bloc“ in the house.**

In the further BESA test process, the house is tested again 7 days after the "Leela Quantum Bloc" has been applied.

**Goal:** To determine the reaction of the house (reaction from the meridian system of the surrogate Eva Krankl) to the effect of the "Leela Quantum Bloc"? Determination of differences compared to BESA 1 testing BEFORE.

BESA Test evaluation P72 4.0

from **18-01-2021 at 17:28 – 17:33** (5 Minutes) page 52 and 53

**result:** The measurement result shows significant improvements on the energy system of the house (on the meridian endpoints or on the energetic state of the surrogate).

**100 % in the green area**

**Conclusion:** As the BESA graphs show, 7 days after inserting the "Leela Quantum Bloc" into the house, all measuring points are in the green, optimal and harmonized range (balanced energy system). The BESA testing shows a significant improvement of the energy situation compared to the BESA 1 testing BEFORE. It is shown that the "Leela Quantum Bloc" is able to give the red readings (total deregulation) detected in the BESA 1 testing BEFORE a necessary impulse for harmonization (neutralization) into a life-supporting range. The comparisons of the BESA graphs confirm the change and resolution of the loaded (red) acupuncture points on the house (on the meridian system of the surrogate Eva Krankl for the house).

**Interesting:** A radiesthesist commissioned by IFVBESA, Mr. Jan Baumann from Germany, carried out an energetic testing by means of radiesthesia for the same house mentioned above with the following summary or result:

**On 11.04.2021 I made an energetic measurement over the residential object over the photos sent to me.:**

Thereby the following mutations were determined:



The energy status of the house was 71% (previously 24%), which is to be classified as very high in relation to the energy supply and energy distribution in the house. Encumbrances on the property are due to the shape and geographical location.

The house has burdens due to the shape and residential toxins, and from the outside due to electric, WLAN and mobile phone. In the house no loads of electro, WLAN and mobile radio were assumed! Likewise no geopathic load was determined in the house.

Since on 07.01.2021 products with harmonizing effect were already installed, I went back mentally to 04.01.2021 to the house measurement. Thereby the following mutations were made.

The energy status of the house was with 24% clearly lower than on 11.01.2021, whereby it is to be noted that the energy supply and energy distribution of the house had not changed.

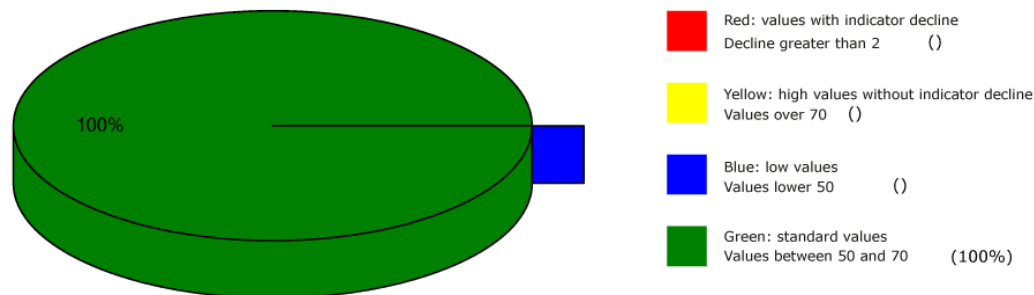
Furthermore geopathic, electrical and WLAN loads were assumed in the house on 04.01.2021. The loads from outside were the same on 04.01.21 and on 11.01.2021.

Thus, in my opinion, through the interference suppression with the product / products that I do not know, the geopathic stress has been removed and electrical and WLAN stress has been neutralized.

The energy increase of the house by the products are to be regarded as very positive and will certainly have a positive effect on the health and well-being of the residents.

To achieve further improvements, one would have to set measures with Feng Shui to further activate the energy flows to the house and the energy distribution in the house.

### Overview of BESA measuring





## BESA basic test

+++ : Indicator decline > 15 Skt.

++ : Indicator decline 6-15 Skt.

+ : Indicator decline 3-5 Skt.

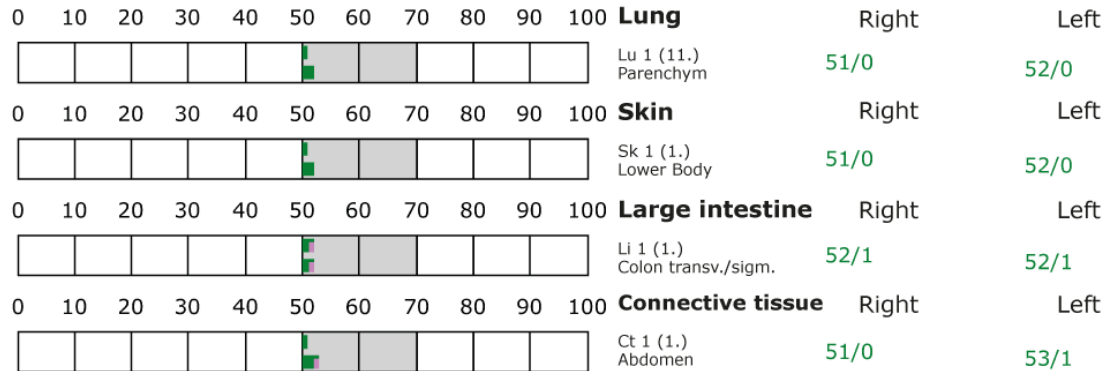
T: Total inflammation (>89 Skt.)

P: Partial inflammation (70-89 Skt.)

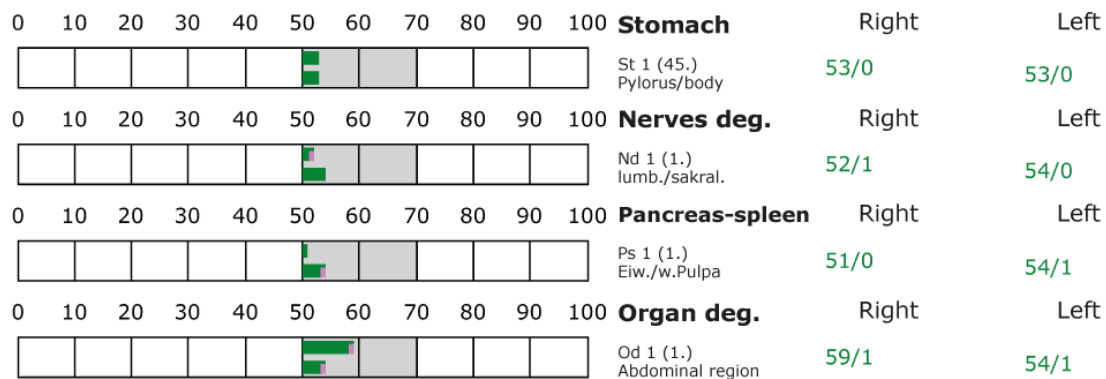
D: Degeneration (< 50 Skt.)

Standard values: (50-70 Skt.)

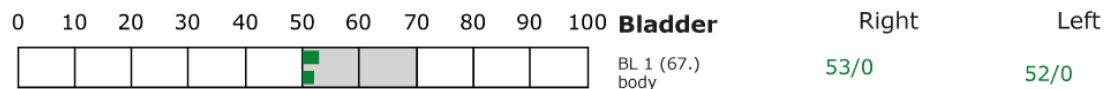
### Element: lu - sk - li - ct



### Element: st - nd - ps - od



### Element: bl - ly - ki - al





## BESA basic test

+++ : Indicator decline > 15 Skt.  
++ : Indicator decline 6-15 Skt.  
+ : Indicator decline 3-5 Skt.

T: Total inflammation (>89 Skt.)  
P: Partial inflammation (70-89 Skt.)

D: Degeneration (< 50 Skt.)

Standard values: (50-70 Skt.)

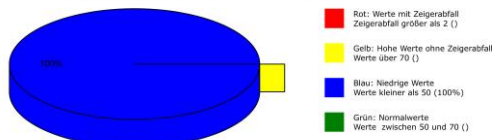
Element: bl - ly - ki - al													
0	10	20	30	40	50	60	70	80	90	100	<b>Lymph</b>	Right	Left
<div><div></div><div></div><div></div><div></div><div></div><div></div><div></div><div></div><div></div><div></div></div>					<div><div></div><div></div><div></div><div></div><div></div><div></div><div></div><div></div><div></div><div></div></div>								



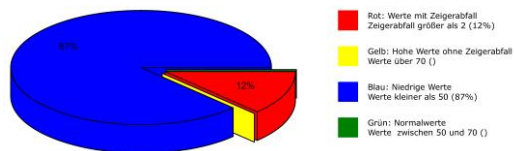
## All BESA tests at a glance

### Proband 1

Übersichtsdiagramm der BESA-Messungen:

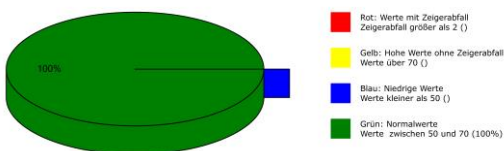


Übersichtsdiagramm der BESA-Messungen:



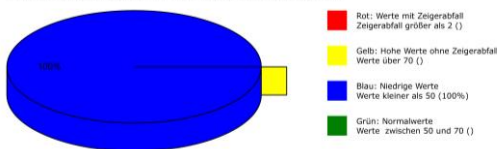
### BESA Testing after activation of the „Leela Quantum Bloc“

Übersichtsdiagramm der BESA-Messungen:

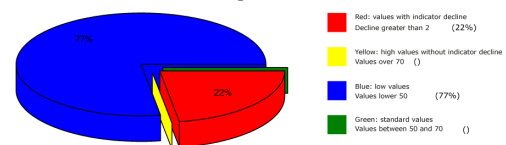


### Proband 2

Übersichtsdiagramm der BESA-Messungen:

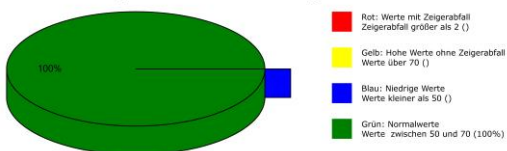


Overview of BESA measuring



### BESA Testing after activation of the „Leela Quantum Bloc“

Übersichtsdiagramm der BESA-Messungen:

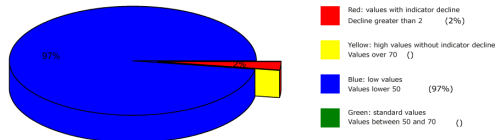




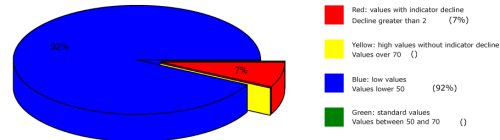
Internationaler Fachverband für BESA | ZVR Nr. 975047937  
Hauptstraße 1, A 4861 Kammer-Schörfling am Attersee | Österreich - Austria  
Tel.: +43 – 664 – 73152899 | E-Mail: [info@ifvbesa.at](mailto:info@ifvbesa.at)

## Proband 3

Overview of BESA measuring

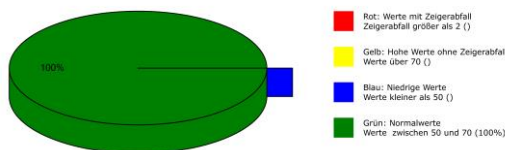


Overview of BESA measuring



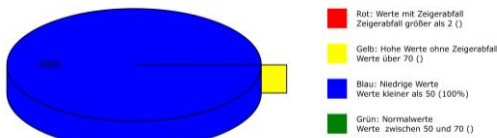
## BESA Testing after activation of the „Leela Quantum Bloc“

Übersichtsdiagramm der BESA-Messungen:

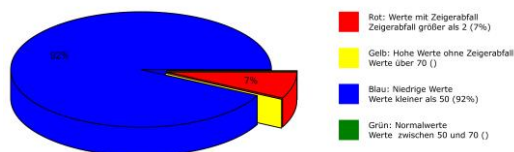


## Proband 4

Übersichtsdiagramm der BESA-Messungen:

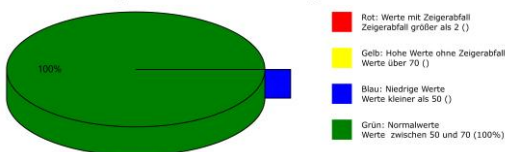


Übersichtsdiagramm der BESA-Messungen:



## BESA Testing after activation of the „Leela Quantum Bloc“

Übersichtsdiagramm der BESA-Messungen:

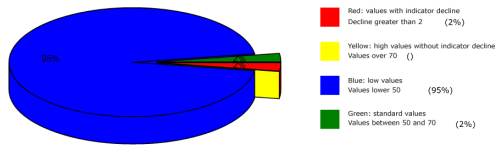




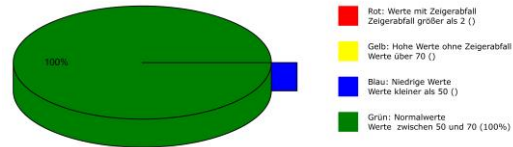
## Proband 5

### BESA Testing after activation of the „Leela Quantum Bloc“

Overview of BESA measuring



Übersichtsdiagramm der BESA-Messungen:



## General information about the test result

The human being or all biological objects represent a kind of receiving antenna for environmental information. This is because the life of man and all other biological objects depends fundamentally and exclusively on environmental information. Our organism is biologically very sensitive where natural information (fields) are located or where they are subject to interactions and fluctuations. **For this reason, detected informative electromagnetic interference fields are biologically highly relevant. Any reduction or transformation of these interfering fields (ideally to 100 percent) is biologically very important, often even decisive for life.**

These informational disturbances from our environment are only compatible with life if they can be readjusted to a natural fluctuation tolerance. Disturbances, problems, blockades, disharmonies in the biological control circuit of man find their causes in such disturbing information influences.

**Neutralizing or harmonizing effects could be proven in this detailed project P72 4.0 to determine the effect of the "Leela Quantum Bloc".**

The "Leela Quantum Bloc" was able to neutralize the biologically adverse effects and effects determined on the test person in the project. Yes, even on the house itself, a significant improvement of the energetic house condition could be determined via the BESA tests BEFORE and AFTER.

**The decisive ability of the "Leela Quantum Bloc" to neutralize and harmonize the life-endangering information or tested stress factors tested in this detailed project P72 4.0 and their transformation into biological life-promoting goodness is proven with this project..**





## Autorized Summary

The BESA tests carried out by IFVBESA on the energetic and physical effectiveness of the "Leela Quantum Bloc" have clearly shown that it is able to neutralize or harmonize biologically significant stress factors on the energetic system of the test persons. By means of the bioenergetic system analysis, the effect of the above-mentioned stress factors on the test persons, their meridian system and their energetic-biological control circuits was questioned and systemically tested on the bioenergetic level. The BESA tests BEFORE - AFTER show significant changes at the tested acupuncture points or at the meridian system. The measurement data as well as their key figures impressively confirm on the one hand the stresses, on the organism of the test persons, respectively of the house itself, and clarify on the other hand, how the deregulating energies are transformed into body-immanent and biocompatible energies after application of the "Leela Quantum Bloc".

From a holistic point of view, it may be assumed that the positive effect on the test persons also occurs with other people and objects. The fact that the positive influence of the "Leela Quantum Bloc" is actually possible with high precision is clearly shown by the BESA-Before-After comparison. All measured values improved significantly from the mostly 100-percent blue measuring range to the green mostly 50-second range (scale value), i.e. the range of optimal measured values. This means: an optimal regulation dynamic has taken place. Here, in the sense of the IFVBESA, one can clearly speak of an optimal, significant improvement of the body's own energy situation.

**Result:** The test persons were brought into contact with heavily stressing frequencies (information) during the BESA-AFTER testing. In contrast to the BEFORE tests, in which the "Leela Quantum Bloc" was not used, positive measurement results were found throughout, indicating that neutralization or harmonization had taken place. The regulatory dynamics developed into an optimal effective range.

**By proving the bioenergetic effectiveness of the "Leela Quantum Bloc" in this detailed project P72 4.0, the requirements for obtaining a BESA seal of approval from the International Professional Association for BESA were met.**