



# IFVBESA

Information is crucial

**P72 3.0 BESA-Detailproject**  
**Sweater & Quantum-Entanglement**  
**Leela Quantum Bloc**



## Projekt P72 3.0 to the BESA expert opinion

bioenergetic System analysis  
within the framework of the BESA seal of approval on the effectiveness  
of the product „Leela Quantum Bloc“  
when a sweater is activated by quantum entanglement  
also referred to as "test object" in the project.





Internationaler Fachverband für BESA | ZVR Nr. 975047937  
Hauptstraße 1, A 4861 Kammer-Schörfling am Attersee | Österreich - Austria  
Tel.: +43 – 664 – 73152899 | E-Mail: [info@ifvbesa.at](mailto:info@ifvbesa.at)

## **Client**

Firma Leela Quantum Tech, LLC  
Attn: Eleonora Goldenberg  
1421 LUISA STREET, STE G  
SANTA FEE, NM 87505  
USA

## **Project participants:**

**Project leader:** Wolfgang Hans Albrecht, präsidant and scientific director of the IFVBESA

**Test person:** Eva Krankl, Vicepräsident and deputy scientific director of the IFVBESA

**Respondent:** 8 anonymous subject in the (Detail) Projects P72 1.0, P72 2.0, P72 3.0, P72 4.0 as well P72 4.1 and P72 4.2

These break down as follows:

- 1 Respondent at P72 1.0 - New-Snow (chemtrails)
- 2 Respondent at P72 2.0 - Automatic-clocks in the „Leela Quantum Bloc“
- **1 Respondent at P72 3.0 – Sweater at quantum entanglement via „Leela Quantum Bloc“**
- 5 Respondents at P72 4.0 - family home + „Leela Quantum Bloc“
- 3 Respondents at P72 4.1 - family home without „Leela Quantum Bloc“
- 3 Respondents at P72 4.2 - family home + „Leela Quantum Bloc“ with quantum entanglement

**other participants:** none

## **Project location:**

Location of the IFVBESA, Hauptstraße 1, A 4861 Kammer/Schörfling

**Date:** 27.12.2020 until 07.02.2020

**Project duration:** 42 Days



## Table of contents

BESA-legend <b>for interpretation of BESA measurement results</b> .....	5
Basics of research project creation P72 .....	6
Research funding services of IFVBESA - BESA reference.....	7
Research preproject description (detailed project) .....	8
Test procedure .....	9
Qverview of <b>all BESA-Tests</b> .....	19
general information to the test result.....	20
Autorized Summary .....	20

### Important notes:

The client owns the right to exploit this project report. Irrespective of this, this report represents intellectual property of IFVBESA as the contractor. The contractor is entitled to use this project report for other purposes if this does not violate the client's data protection or confidentiality. On the other hand, the project report, with the exception of the "authorized abridged version", may not be changed or passed on in abridged form without the consent of the IFVBESA. The order for this project refers to bioenergetically measurable values and their interpretation according to the guidelines of BESA or the IFVBESA. The maintenance of the quality of the tested products as well as their regular control is the task and responsibility of the client. Investigation of the manufacture, mechanism of action or interpretations of the Client's products to third parties is not the responsibility or task of the Contractor. Video recordings may be made only with the permission of IFVBESA.



## BESA-legend for the interpretation of the BESA measurement results

The measured value of 50 on the tested meridian represents an optimal energetic state in this organ or its subordinate and superordinate levels. Also measured values in the range of 50 to max. 70 still count as a neutral and balanced energy status. The organism is able to regulate irritations of the system (wrong environmental signals) very well.

Measured values above 70 to 100 represent the inflammatory range or a so-called energy surplus as a reaction to the irritations of the system by corresponding environmental signals. After reaching the maximum values, the energy state tips into the degenerative (blue) range.

Measured values from below 50 to around 0 represent the so-called degenerative measuring range or a lack of energy as a reaction to the stimulation of the system by corresponding environmental signals.

Measured values represented by a so-called pointer drop of more than 3 scale lines indicate total deregulation. The influence of certain environmental signals then leads to such strong system overloads, which can only be brought into harmonization by corresponding new signals.

### BESA key figures:

<b>up to 0,79</b>	very deep energetic regulatory disorder (SSD) energy deficiency
<b>0,8 to 1,19</b>	strong energetic regulation disturbance (SD) degeneration/energy deficiency
<b>1,2 to 1,59</b>	energetic regulation disorder (D) degeneration/energy deficiency
<b>1,6 to 1,99</b>	degenerative transition area (DÜ)
<b>2,0 to 2,39</b>	optimal regulation (OR)
<b>2,4 to 2,79</b>	in the regulation (R)
<b>2,8 to 3,19</b>	partial inflammation = regional energy excess (PE)
<b>from 3,2</b>	total inflammation = strong general energy surplus (TE)





## Basics of the research project creation P72

The international professional association for bioenergetic system analysis was commissioned by the company Leela Quantum Tech LLC to test or prove the effect of the test object "Leela Quantum Bloc" by means of bioenergetic system analysis (BESA). The testing took place independently of the subjective feeling of all test persons.

### **Description of the "Leela Quantum Bloc" by the client:**

- "Leela Quantum Bloc" is a quantum space generator and concentrator, which is highly concentrated inside the device between the plates. At the same time, the Quantum Bloc has an energetic extension of more than 100 meters, which however does not represent the concentrated quantum space, but a positive energetic quantum field. This quantum field neutralizes and harmonizes on the one hand negative frequencies and vibrations and on the other hand provides overall positive, inviting and peaceful energy. In the quantum space itself (between the plates), each object that is placed there is energetically restructured, optimized and charged with quantum energy within 60 seconds. It can be said from previous tests that any object that has been in the "Leela Quantum Bloc" becomes "better". Whether that is water, food, jewelry, technical devices, etc. The essential difference of the "Quantum Bloc" to other "quantum energy producing devices" is that the Quantum Bloc works on more than one level of consciousness (and thus on this level one-dimensional, figuratively represented like a flat field). The Quantum Bloc works on more than 50 levels at the same time and is therefore a multidimensional quantum space in every respect. This has the advantage, also among others compared to other devices, that even if the energy is increased, there is no imbalance or negative energetic pressure. This is especially important for users whose organism cannot yet handle such higher energy levels. Furthermore, the "Leela Quantum Bloc" needs only about 30 seconds to transfer a frequency in it from one object to another. We have also been able to observe this in 20 seconds, but officially advise a minute (60 seconds).

### The client assumes that the Quantum Bloc can produce the following effects:

- charge any object with comprehensive, positive quantum energy.
- For clarification: energies are always neutral. With "positive" the client wants to refer to the positively affecting energy of the objects in the room such as people, animals, plants, etc.
- copy any frequencies within only 1 minute
- harmonizing energy field for home, workplace, car, etc.
- harmonization of any negative frequencies



- helps to dive deeper into one's own consciousness (whether in meditation, daily life, "retrieving" information, etc.)
- optimizes food, water and all other substances
- positive effect on human cells and body (physical and energetic). For this purpose it is enough just to be in the expanded field of the Quantum Block. If one part of the body is in the concentrated quantum space, automatically not only the cells of this one part of the body, but the cells of the whole body are intensively touched.
- neutralizes unwanted "dark entities" or keeps them away due to the high light vibration or "brings" them into the light
- cleanses the aura
- supports positive affirmations within the framework of legality and also accelerates their manifestation within the framework of legality

## Research funding services of the IFVBESA - BESA- reference tests

### General information about this project:

In this detailed project P72 3.0, the aim is to perform quantum physical activation of objects, such as a 100% cotton ladies' sweater over a distance of about 40 kilometers in the "Leela Quantum Bloc" and to question their effectiveness with BESA tests. In this process, the possibility of so-called quantum entanglement is applied. For this process, a previously coded photograph taken of the sweater is placed in the "Leela Quantum Block" for 24 hours. The photograph is simply coded or tagged with the date of activation. Through the morphogenetic field (quantum field), the photograph of the sweater is connected to the physical original. For this project 1 subject was selected.

The client assumes that through the photograph of the sweater located in the "Leela Quantum Bloc", the original sweater is quantum physically charged and causes a change in the energy system of the subject during BESA testing. Thus the life-promoting effect is to be proven over the BESA-after tests at the test person. Possibly burdening interference fields should be harmonized informatively and their frequencies should be transformed into positive, life-promoting vibrations. This is tested by this BESA project on the test person, who is additionally confronted with EMSF (electromagnetic interference fields). These are composed as follows: W-Lan, Bluetooth, activated mobile network of generation 4G and 5G, smart meter.

The "Leela Quantum Bloc" is tested according to the requirements of the client within the framework of the applicable conditions of the IFVBESA for the award of quality seals. Depending on the significance of the test results, seals of approval are awarded in 3 categories, taking into account all the tests of a project.



The client and developer of the "Leela Quantum Bloc" assumes that it is capable of compensating for any deficiency states that may be displayed on the test person, as well as replacing the associated negative states with positive states. Whether the "Leela Quantum Bloc" is able to do this is to be questioned by the following commissioned BESA tests on the test person.

#### To the general information of the information transfer:

The information transfer takes place from the hyperspace of the test object to the hyperspace of biological objects (humans, animals, plants). From there the information reaches the reference space or the energy space via so-called interaction channels. This is a union of, among other things, all organs and energy forms in the biological object. There, the information of the program can dynamically materialize and thus change current states. The changes can appear in the form of neutralization or harmonization of disturbances, dissolution of problems, blockages and disharmonies.

### Research project description (detailed project)

The reason for the tests is to prove the functionality of the "Leela Quantum Bloc" by test results obtained by testing the subject for stress factors against his environment in order to significantly prove and compare his reactions without the "Leela Quantum Bloc" and with the "Leela Quantum Bloc".

- The BEFORE measurements are made without the Leela Quantum Bloc.
- The AFTER measurements are made with the "Leela Quantum Bloc" via quantum entanglement.

**The question in the AFTER measurement is:** "Is the "Leela Quantum Bloc" suitable and able to harmonize or neutralize the possibly perceived negative effects on the organism of the test person via quantum entanglement?"

The appropriately designed tests should provide information about this by comparing the preliminary measurements without the "Leela Quantum Bloc" with the test results of the follow-up measurements to be carried out using the "Leela Quantum Bloc".

The concern of the development team of the company Leela Quantum Tech LLC is to have it determined whether the test object, the "Leela Quantum Bloc" as noted in the product description is suitable for neutralizing the stress factors as well as the associated disturbances in the energy system of the test person via quantum entanglement.

#### **Conditions:**





The BESA tests were performed in the premises of IFVBESA under laboratory conditions, at room temperature 20° Celsius, on natural wood floor. The test persons were deswitcht (made testable) before the BESA tests or the test possibilities were questioned with the respective test person.

- Pos.1** BESA basic tests BEFORE (bioenergetic status) on the test person
- Pos.2** BESA AFTER testing of the pullover activated via quantum entanglement by the Leela Quantum Block on the test person as well as EMSF
- Pos.3** Evaluation of the results in the detailed project as well as summary in the corresponding expert opinion according to sample

### Procedure and specifications for the execution

1. **BESA-baseline measurement of the test person** at all previously determined measurement points (TING points). This corresponds to the actual condition, so to speak. The results are determined exactly according to the BESA specifications and documented via the known BESA graphs.
2. **the photograph of the sweater** is placed in the "**Leela Quantum Block**" for 24 hours, depending on the project. The process discussed with the client is considered as a specification and is followed accordingly. In order to be able to determine the current energy state, the measuring points mentioned under point 1 are measured in the same order and for the same duration during each test. The results are determined exactly according to the BESA specifications and documented via the BESA graphs.
3. **testing of the test object activated by quantum entanglement on the test person**  
  
In the "Testing of the original sweater on the test person", the test person is contacted with the sweater activated by the photography in the "Leela Quantum Block" according to the specifications of the client. The measuring points mentioned under point 1 are measured in the same order and time duration to determine the current energy state. The results are determined exactly according to the BESA specifications and documented via the BESA graphs.

## Test procedure

### BESA 1 BASIC Testing BEFORE as a status

In the first step, a basic bioenergetic test (bioenergetic status) is performed on the meridian end points (TING points) of the test person.

### BESA 2 Testing BEFORE + EMSF

In the further BESA testing process, the influence of EMSF is tested on the test person.



The question is: How does the energy system react? How does the energetic status of the subject change when confronted with EMSF? What are the differences compared to the BESA 1 BASIC test BEFORE?

### **BESA 3 Testing AFTER of the sweater activated via quantum entanglement (photography) in the „Leela Quantum Bloc“**

In the third BESA test, the sweater activated via quantum entanglement (photography) in the "Leela Quantum Bloc" is put on by the test person and thus introduced into the measurement circuit. Now the question is: How does the energy system of the test person react to the sweater activated in the Bloc?

## **BESA 1 Testing BASIC-BEFORE**

### **BESA 1 BASIC Testing BEFORE as a status**

Eva Krankl performed a basic BESA measurement on the test person. All BESA tests are performed at the TING points (40 nail fold points on the fingers and toes).

**Goal:** The creation of a basic test (status) as a representation of the energetic initial situation for all further BESA tests.

BESA Test evaluation P72 3.0

from **11-01-2020 at 12:34 – 12:41** (7 Minutes) page 11 and 12

**result:** The measurement result indicated energetic stress at the meridian endpoints and subsequently on the subordinate metabolic situation of the test person.

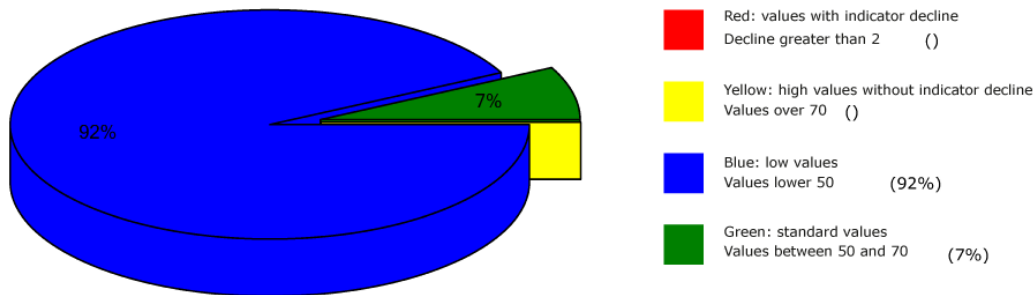
**92 % in the blue area**

**7 % in the green area**

**Conclusion:** As the BESA graphs and the pie chart show, almost all of the measurement results were in the blue, degenerative range (energy deficiency).



## Overview of BESA measuring



## BESA basic test

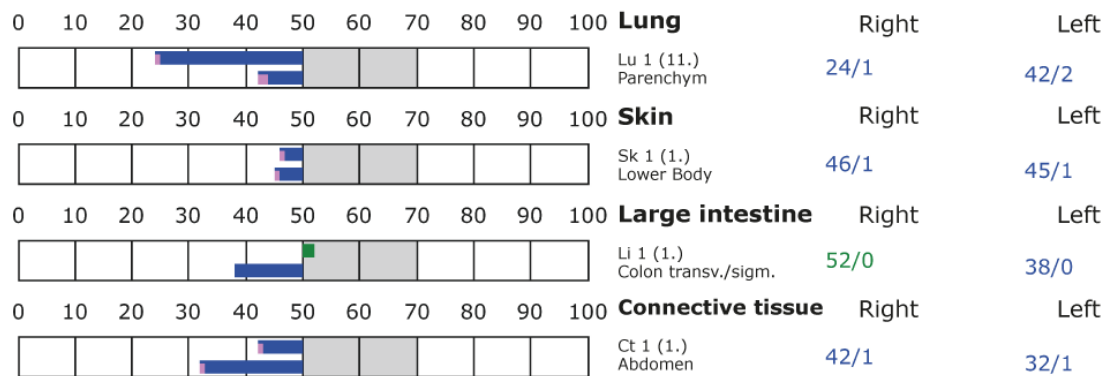
+++ : Indicator decline > 15 Skt.  
++ : Indicator decline 6-15 Skt.  
+ : Indicator decline 3-5 Skt.

T: Total inflammation (>89 Skt.)  
P: Partial inflammation (70-89 Skt.)

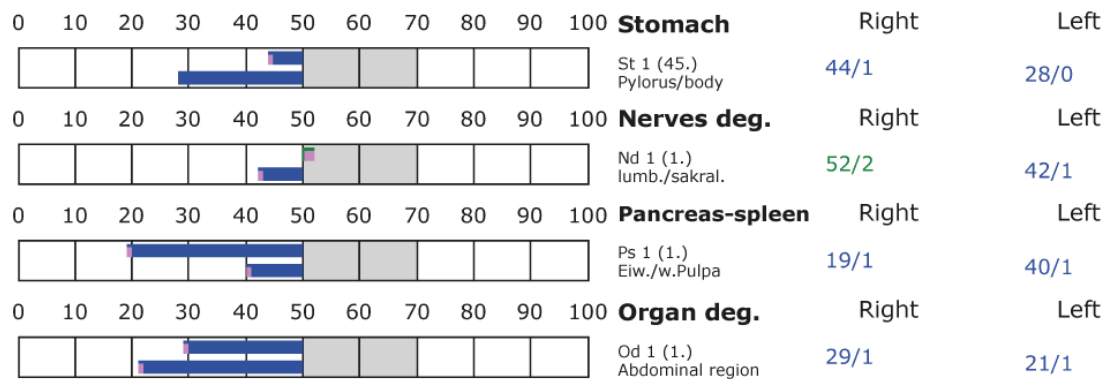
D: Degeneration (< 50 Skt.)

Standard values: (50-70 Skt.)

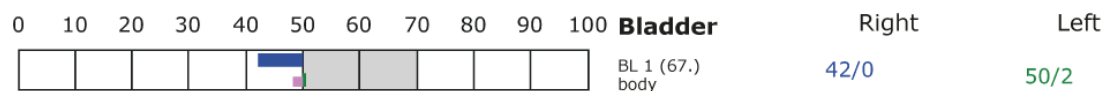
### Element: lu - sk - li - ct



### Element: st - nd - ps - od



### Element: bl - ly - ki - al





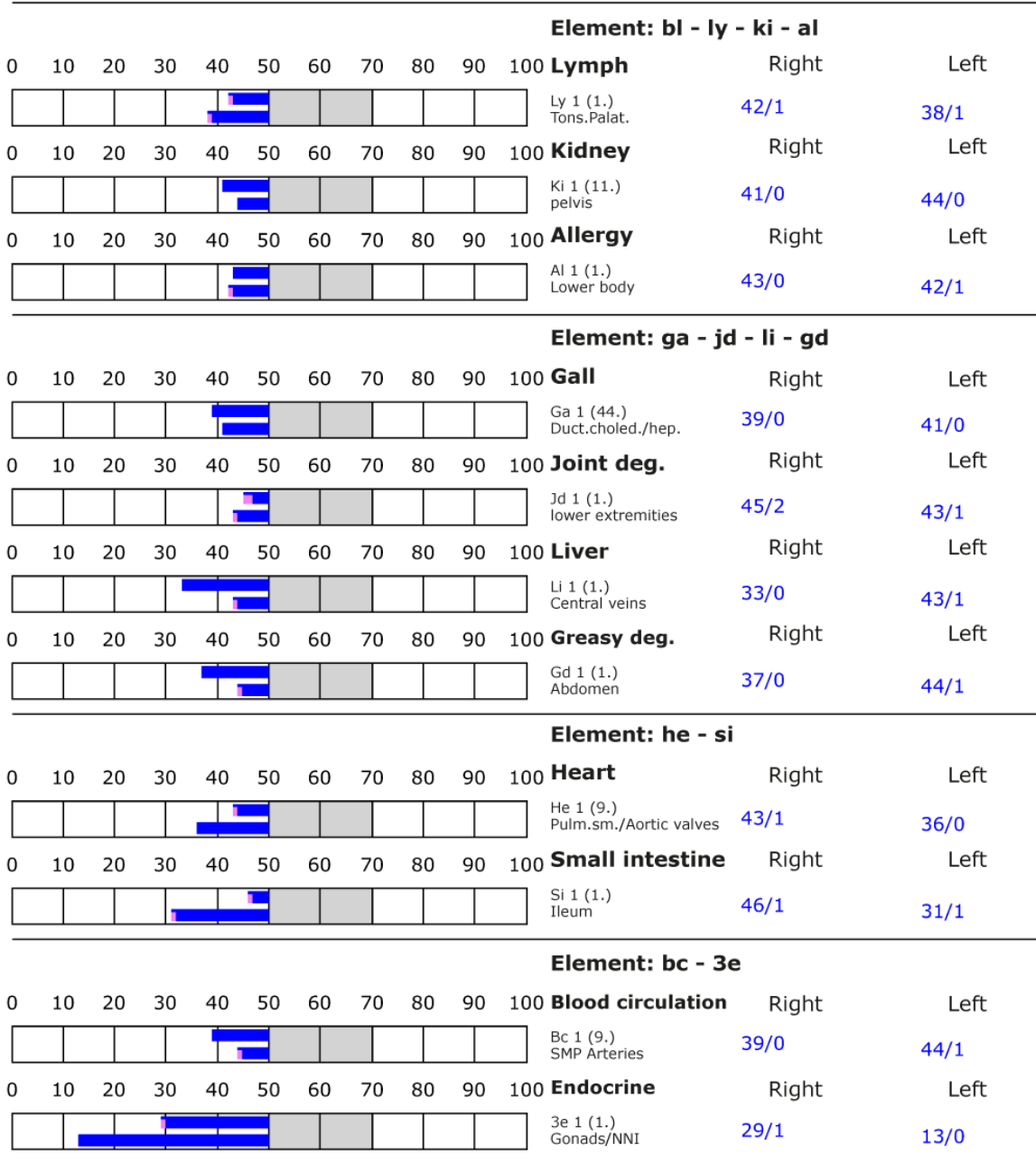
## BESA basic test

+++ : Indicator decline > 15 Skt.  
++ : Indicator decline 6-15 Skt.  
+ : Indicator decline 3-5 Skt.

T: Total inflammation (>89 Skt.)  
P: Partial inflammation (70-89 Skt.)

D: Degeneration (< 50 Skt.)

Standard values: (50-70 Skt.)





## BESA 2 Testing BEFORE

### BESA 2 Testing BEFORE - EMSF on the test person

In the further course of the BESA test, the subject was contacted with EMSF such as WLAN, Bluetooth, smart meter and a connected cell phone (5G). During BESA testing, the cell phone was on the subject's left foot and thus actively in the BESA measurement circuit.

**Goal:** To determine the response of the subject's meridian system within the EMSF sources. Determination of the differences compared to the BESA 1 test BASIC BEFORE.

BESA Test evaluation P72 3.0  
from **11-01-2021 at 12:41 – 12:57** (16 Minutes) page 14 and 15

**result:** The measurement result indicated heavy energetic stress at the meridian endpoints and subsequently on the subordinate metabolic situation of the test person.

**52 % in the blue area**

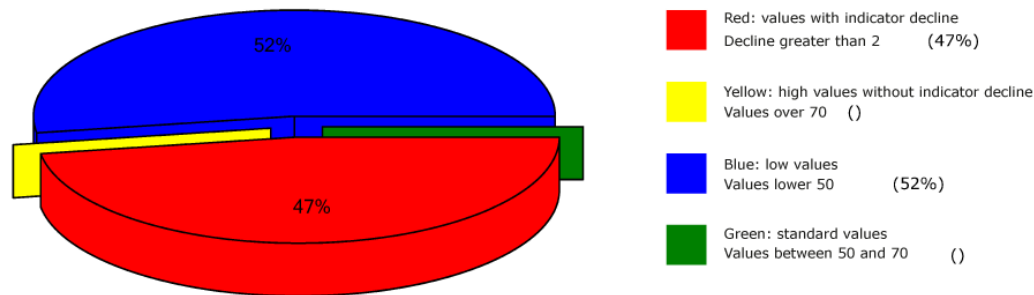
**47 % in the red area**

**1 % in the yellow transition area**

**Conclusion:** As the graphs show, many measurement points are in the degenerative blue area (energy deficiency). However, the picture is dramatic due to the now predominant measured values in the red area. The BESA test thus shows a significant deterioration of the subject's energetic situation compared to the BESA 1 test BASIC BEFORE. The red readings represent a total deregulation of these energy areas. This means that the energy system of the organism would seriously damage the test person in case of permanent influences of such or similar interference fields. For a balancing of these red readings or in other words: for a harmonization of the values, the energy system needs a strong positive impulse from outside. The comparisons of the BESA graphs confirm the change and the stressful influences of the tested EMSF on the test person.



## Overview of BESA measuring



## BESA basic test

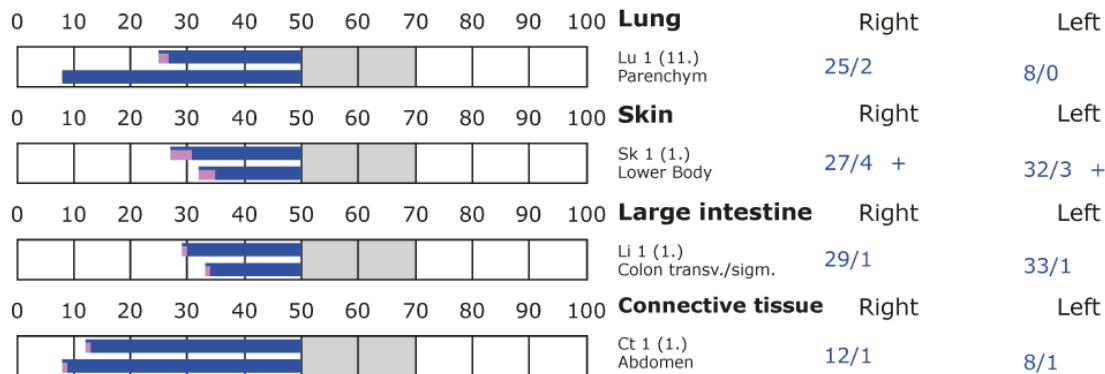
+++ : Indicator decline > 15 Skt.  
++ : Indicator decline 6-15 Skt.  
+ : Indicator decline 3-5 Skt.

T: Total inflammation (>89 Skt.)  
P: Partial inflammation (70-89 Skt.)

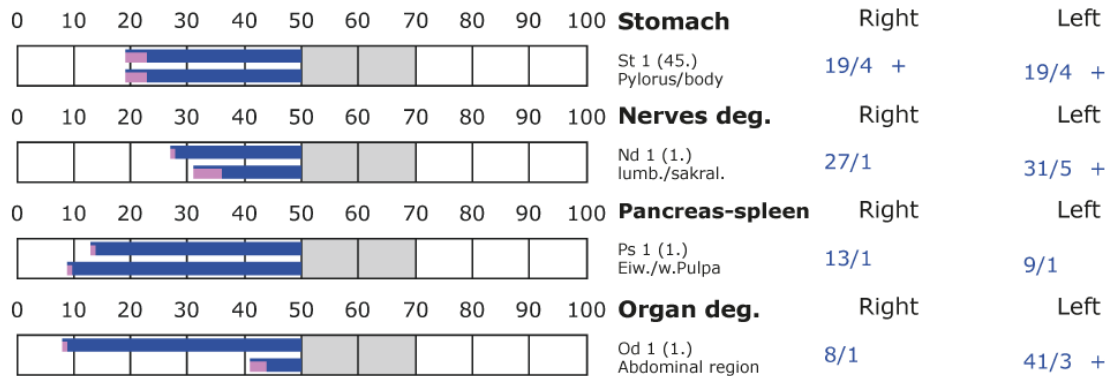
D: Degeneration (< 50 Skt.)

Standard values: (50-70 Skt.)

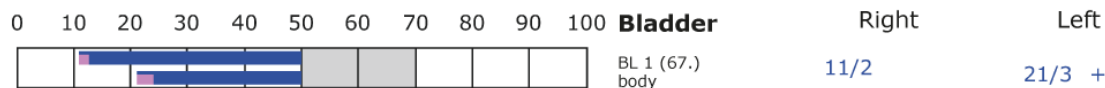
### Element: lu - sk - li - ct



### Element: st - nd - ps - od



### Element: bl - ly - ki - al







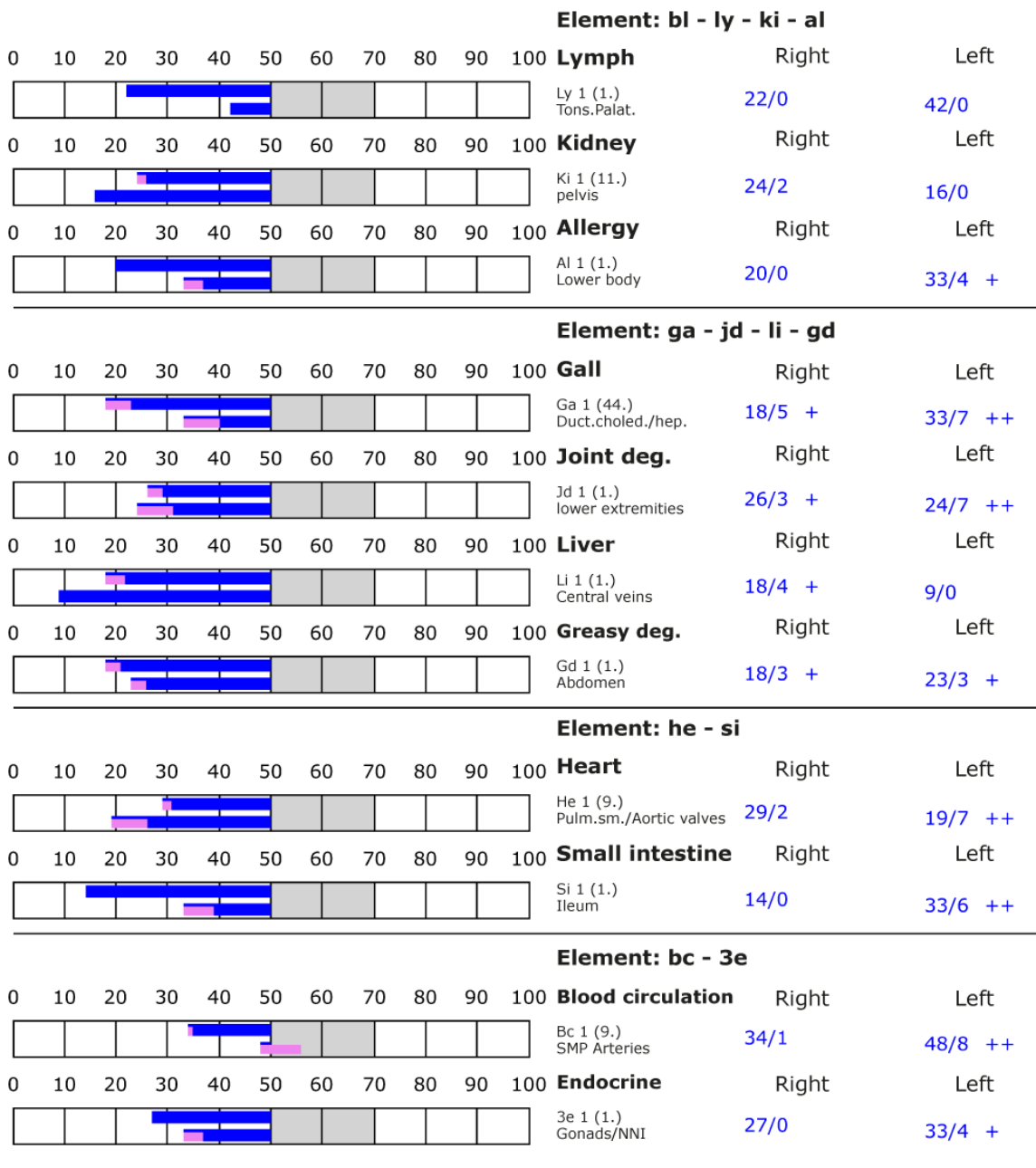
## BESA basic test

+++ : Indicator decline > 15 Skt.  
++ : Indicator decline 6-15 Skt.  
+ : Indicator decline 3-5 Skt.

T: Total inflammation (>89 Skt.)  
P: Partial inflammation (70-89 Skt.)

D: Degeneration (< 50 Skt.)

Standard values: (50-70 Skt.)





## BESA 3 Testing AFTER

### **BESA 3 Testing AFTER testing the sweater activated via quantum entanglement in the "Leela Quantum Bloc" via photography.**

In the further BESA test course the test person puts on the sweater, which was activated before 24 hours over a photograph of the same in the "Leela Quantum Bloc". Thus, this sweater is actively in the BESA measuring circuit of the test person.

**Goal:** To determine the response of the subject's meridian system when the sweater activated via quantum entanglement (photography) in the "Leela Quantum Bloc" acts on the subject? Determination of the differences compared to the BESA 1 and 2 tests BEFORE.

BESA Test evaluation P72 1.0

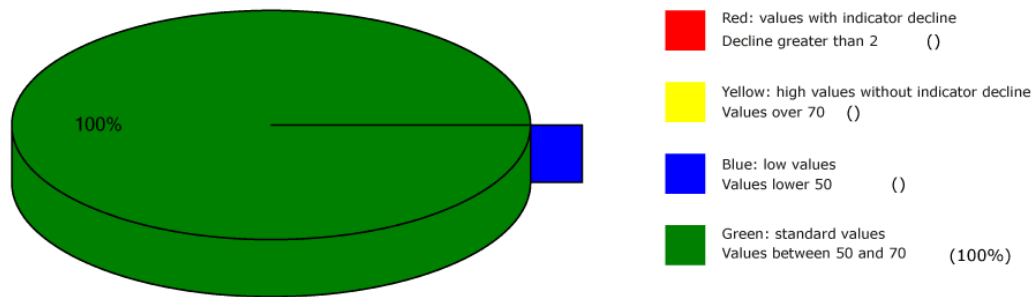
from **11-01-2021 at 12:57 – 13:03** (6 Minutes) page 17 and 18

**result:** The measurement result shows significant improvements at the meridian endpoints or at the bioenergetic state of the test person.

**100 % in the green area**

**Conclusion:** As the BESA graphs show, after the test person has put on the sweater, all measurement points are in the green, optimal and harmonized range (balanced energy system). The BESA test results in a significant improvement of the energy situation in the meridian system of the test person compared to the BESA 1 and BESA 2 tests BEFORE. It is shown that the "Leela Quantum Block" even over a distance of 40 km (process represented as quantum entanglement) is able to give the red readings (total deregulation) detected in the BESA 2 testing BEFORE a necessary impulse for harmonization (neutralization) into an area conducive to life. The comparisons of the BESA graphs confirm the change and resolution of the stressed (red) acupuncture points on the meridian system of the subject also via quantum entanglement.

## Overview of BESA measuring



## BESA basic test

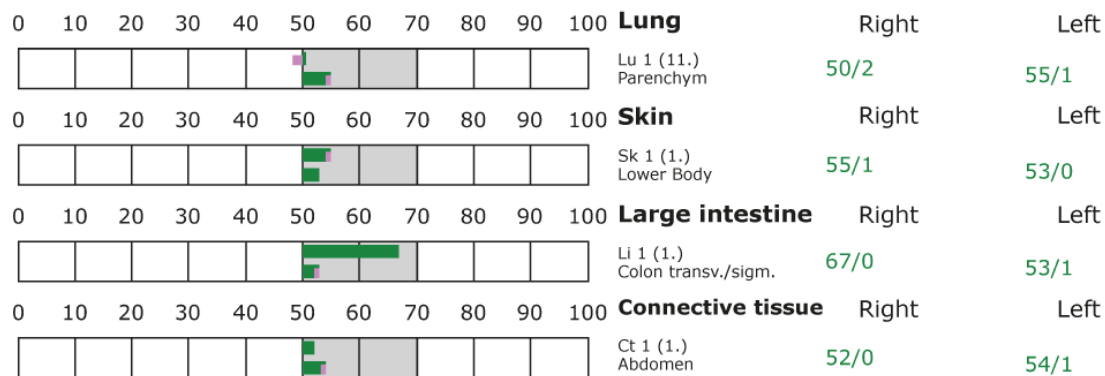
- +++ : Indicator decline > 15 Skt.
- ++ : Indicator decline 6-15 Skt.
- +: Indicator decline 3-5 Skt.

T: Total inflammation (>89 Skt.)  
P: Partial inflammation (70-89 Skt.)

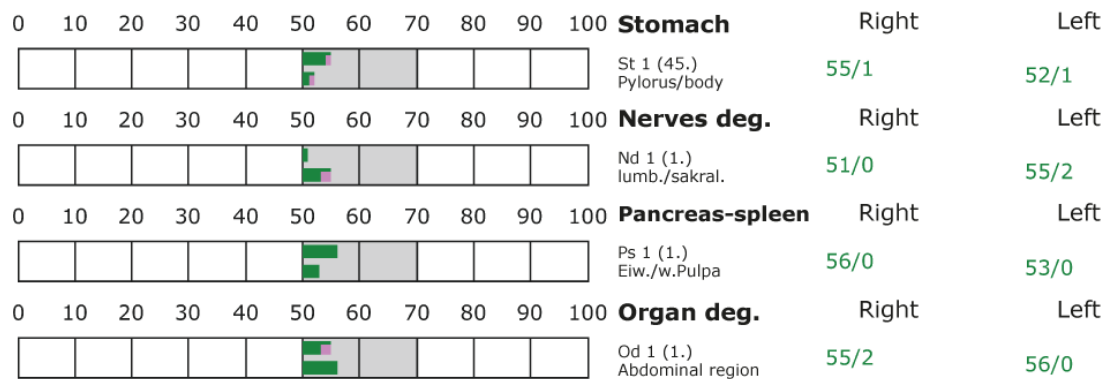
D: Degeneration (< 50 Skt.)

Standard values: (50-70 Skt.)

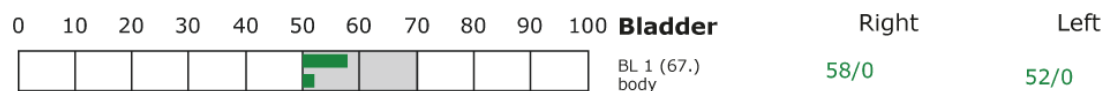
**Element: lu - sk - li - ct**



**Element: st - nd - ps - od**



**Element: bl - ly - ki - al**





## BESA basic test

+++ : Indicator decline > 15 Skt.  
++ : Indicator decline 6-15 Skt.  
+ : Indicator decline 3-5 Skt.

T: Total inflammation (>89 Skt.)  
P: Partial inflammation (70-89 Skt.)

D: Degeneration (< 50 Skt.)

Standard values: (50-70 Skt.)

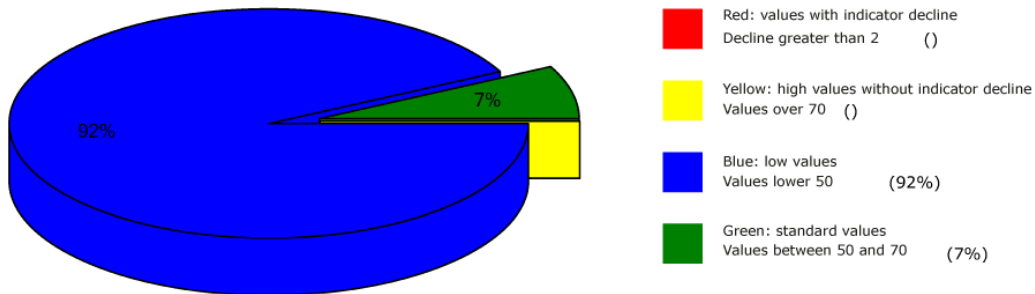
Element: bl - ly - ki - al											
0	10	20	30	40	50	60	70	80	90	100	
					<b>Lymph</b>					Right	Left
					Ly 1 (1.) Tons.Palat.					52/1	53/1
0	10	20	30	40	50	60	70	80	90	100	
					<b>Kidney</b>					Right	Left
					Ki 1 (11.) pelvis					58/0	52/1
0	10	20	30	40	50	60	70	80	90	100	
					<b>Allergy</b>					Right	Left
					Al 1 (1.) Lower body					52/1	58/1
Element: ga - jd - li - gd											
0	10	20	30	40	50	60	70	80	90	100	
					<b>Gall</b>					Right	Left
					Ga 1 (44.) Duct.choled./hep.					57/1	53/0
0	10	20	30	40	50	60	70	80	90	100	
					<b>Joint deg.</b>					Right	Left
					Jd 1 (1.) lower extremities					53/1	55/1
0	10	20	30	40	50	60	70	80	90	100	
					<b>Liver</b>					Right	Left
					Li 1 (1.) Central veins					52/0	56/0
0	10	20	30	40	50	60	70	80	90	100	
					<b>Greasy deg.</b>					Right	Left
					Gd 1 (1.) Abdomen					53/1	52/0
Element: he - si											
0	10	20	30	40	50	60	70	80	90	100	
					<b>Heart</b>					Right	Left
					He 1 (9.) Pulm.sm./Aortic valves					56/2	52/1
0	10	20	30	40	50	60	70	80	90	100	
					<b>Small intestine</b>					Right	Left
					Si 1 (1.) Ileum					58/1	54/1
Element: bc - 3e											
0	10	20	30	40	50	60	70	80	90	100	
					<b>Blood circulation</b>					Right	Left
					Bc 1 (9.) SMP Arteries					55/1	53/1
0	10	20	30	40	50	60	70	80	90	100	
					<b>Endocrine</b>					Right	Left
					3e 1 (1.) Gonads/NNI					54/2	53/1



## All BESA tests at a glance

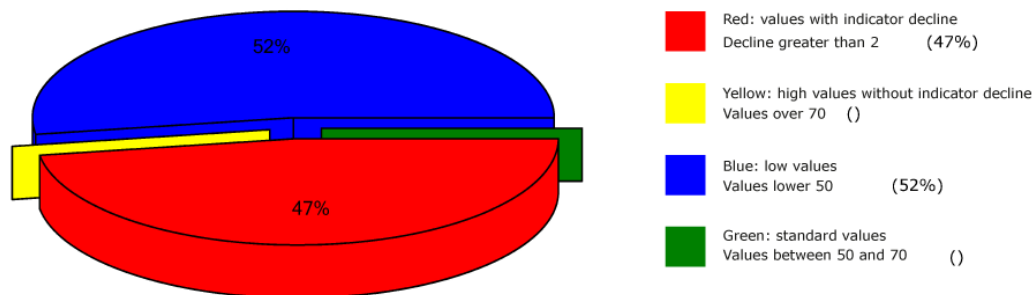
### BESA 1 Testing BASIC BEFORE

#### Overview of BESA measuring



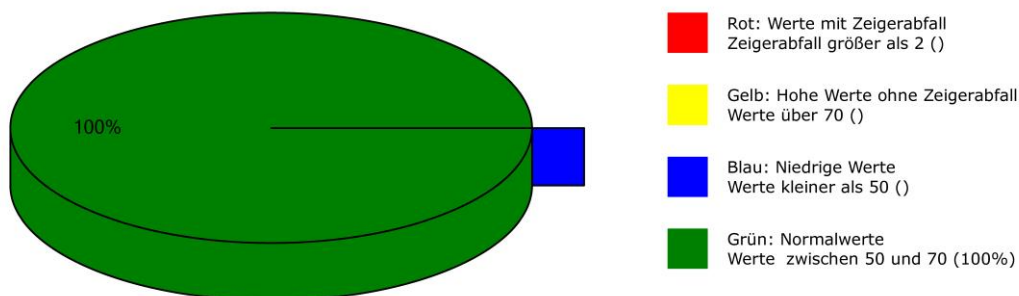
### BESA 2 Testing BEVORE and EMSF

#### Overview of BESA measuring



BESA 3 Testing AFTER activation of the sweater using quantum entanglement by photography in the "Leela Quantum Bloc".

#### Übersichtsdiagramm der BESA-Messungen:





## General information about the test result

The human being or all biological objects represent a kind of receiving antenna for environmental information. This is because the life of man and all other biological objects depends fundamentally and exclusively on environmental information. Our organism is biologically very sensitive where natural information (fields) are located or where they are subject to interactions and fluctuations. **For this reason, detected informative electromagnetic interference fields are biologically highly relevant. Any reduction or transformation of these interfering fields (ideally to 100 percent) is biologically very important, often even decisive for life.**

These informational disturbances from our environment are only compatible with life if they can be readjusted to a natural fluctuation tolerance. Disturbances, problems, blockades, disharmonies in the biological control circuit of man find their causes in such disturbing information influences.

**Neutralizing or harmonizing effects could be proven in this detailed project P72 3.0 to determine the effect of the "Leela Quantum Bloc".**

The "Leela Quantum Bloc" was able to neutralize the biologically adverse effects and effects determined on the test person in the project.

**The decisive ability of the "Leela Quantum Bloc" to neutralize and harmonize the life-endangering information or tested stress factors in this detailed project P72 3.0 and to transform them into biological life-promoting goodness is proven with this project.**

## Authorized Summary

Die The BESA tests carried out by IFVBESA on the energetic and physical effectiveness of the "Leela Quantum Bloc" have clearly shown that it is able to neutralize or harmonize biologically significant stress factors on the energetic system of the test person. By means of the bioenergetic system analysis, the effect of the above-mentioned stress factors on the test person, his meridian system and his energetic-biological control circuits was questioned and systemically tested on the bioenergetic level. The BESA tests BEFORE - AFTER show significant changes at the tested acupuncture points or at the meridian system. The measurement data as well as their key figures impressively confirm on the one hand the stress caused by the tested interference fields on the organism of the test person and on the other hand clarify how after application of the "Leela Quantum Bloc" the deregulating energies are transformed into body-immanent and biocompatible energies. From a holistic point of view, it can be assumed that the positive effect on the test person also occurs in other people.





Internationaler Fachverband für BESA | ZVR Nr. 975047937  
Hauptstraße 1, A 4861 Kammer-Schörfling am Attersee | Österreich - Austria  
Tel.: +43 – 664 – 73152899 | E-Mail: [info@ifvbesa.at](mailto:info@ifvbesa.at)

The fact that the positive influence of the "Leela Quantum Bloc" is actually possible with high precision is clearly shown by the BESA-Before-After comparison. All measured values improved significantly from the mostly 100-percent blue measuring range to the green mostly 50-second range (scale value), i.e. the range of optimal measured values. This means: an optimal regulation dynamic has taken place. Here, in the sense of the IFVBESA, one can clearly speak of an optimal, significant improvement of the body's own energy situation.

**Result:** The test person was brought into contact with heavily loaded frequencies (information) during the BESA-NACHHER testing. In contrast to the BEFORE tests, in which the "Leela Quantum Bloc" was not used, positive measurement results were found throughout, indicating that neutralization or harmonization had taken place. The regulatory dynamics developed into an optimal effective range.

**By proving the bioenergetic effectiveness of the "Leela Quantum Bloc" in this detailed project P72 3.0, the requirements for obtaining a BESA seal of approval from the International Professional Association for BESA were met.**