



# IFVBESA

Information is crucial

P72 2.0 BESA-Detailproject  
Wristwatch  
Leela Quantum Bloc



Internationaler Fachverband für BESA | ZVR Nr. 975047937  
Hauptstraße 1, A 4861 Kammer-Schörfling am Attersee | Österreich - Austria  
Tel.: +43 – 664 – 73152899 | E-Mail: [info@ifvbesa.at](mailto:info@ifvbesa.at)

## Projekt P72 2.0 to BESA expert opinion

bioenergetic System analysis  
within the framework of the BESA seal of approval on the effectiveness  
of the product „Leela Quantum Bloc“  
for Wristwatch  
also referred to as "test object" in the project.





Internationaler Fachverband für BESA | ZVR Nr. 975047937  
Hauptstraße 1, A 4861 Kammer-Schörfling am Attersee | Österreich - Austria  
Tel.: +43 – 664 – 73152899 | E-Mail: [info@ifvbesa.at](mailto:info@ifvbesa.at)

## **Client**

Firma Leela Quantum Tech, LLC  
Attn: Eleonora Goldenberg  
1421 LUISA STREET, STE G  
SANTA FEE, NM 87505  
USA

## **Project participants:**

**Project leader:** Wolfgang Hans Albrecht, präsident and scientific director of the IFVBESA

**Test person:** Eva Krankl, Vicepräsident and deputy scientific director of the IFVBESA

**Respondent:** 8 anonymous subject in the (Detail) Projects P72 1.0, P72 2.0, P72 3.0, P72 4.0 as well P72 4.1 and P72 4.2  
These break down as follows:

- 1 Respondent at P72 1.0 - New-Snow (chemtrails)
- **2 Respondent at P72 2.0 - Automatic-clocks in the Quantum bloc**
- 1 Respondent at P72 3.0 – Sweater at quantum entanglement via quantum-bloc
- 5 Respondents at P72 4.0 - family home + quantum-bloc
- 3 Respondents at P72 4.1 - family home without quantum-bloc
- 3 Respondents at P72 4.2 - family home + quantum-bloc with quantum entanglement

**other participants:** none

## **Project location:**

Location of the IFVBESA, Hauptstraße 1, A 4861 Kammer/Schörfling

**Date:** 27.12.2020 until 07.02.2020

**Project duration:** 42 Days



Internationaler Fachverband für BESA | ZVR Nr. 975047937  
Hauptstraße 1, A 4861 Kammer-Schörfling am Attersee | Österreich - Austria  
Tel.: +43 – 664 – 73152899 | E-Mail: [info@ifvbesa.at](mailto:info@ifvbesa.at)

## Table of content

BESA-Legende zur Interpretation der BESA Messergebnisse .....	5
Grundlagen der Forschungs-Projekterstellung P72 .....	6
Forschungsförderleistungen des IFVBESA – BESA- Referenztestungen.....	6
Forschungsprojektbeschreibung (Detailprojekt) .....	8
Testablauf .....	9
<b>Alle BESA-Testungen im Überblick.....</b>	<b>Fehler! Textmarke nicht definiert.</b>
Allgemeines zum Testergebnis .....	36
Autorisierte Zusammenfassung .....	36

### Important notes:

The client owns the right to exploit this project report. Irrespective of this, this report represents intellectual property of IFVBESA as the contractor. The contractor is entitled to use this project report for other purposes if this does not violate the client's data protection or confidentiality. On the other hand, the project report, with the exception of the "authorized abridged version", may not be changed or passed on in abridged form without the consent of the IFVBESA. The order for this project refers to bioenergetically measurable values and their interpretation according to the guidelines of BESA or the IFVBESA. The maintenance of the quality of the tested products as well as their regular control is the task and responsibility of the client. Investigation of the manufacture, mechanism of action or interpretations of the Client's products to third parties is not the responsibility or task of the Contractor. Video recordings may be made only with the permission of IFVBESA.



## BESA-legend for the interpretation of the BESA measurement results

The measured value of 50 on the tested meridian represents an optimal energetic state in this organ or its subordinate and superordinate levels. Also measured values in the range of 50 to max. 70 still count as a neutral and balanced energy status. The organism is able to regulate irritations of the system (wrong environmental signals) very well.

Measured values above 70 to 100 represent the inflammatory range or a so-called energy surplus as a reaction to the irritations of the system by corresponding environmental signals. After reaching the maximum values, the energy state tips into the degenerative (blue) range.

Measured values from below 50 to around 0 represent the so-called degenerative measuring range or a lack of energy as a reaction to the stimulation of the system by corresponding environmental signals.

Measured values represented by a so-called pointer drop of more than 3 scale lines indicate total deregulation. The influence of certain environmental signals then leads to such strong system overloads, which can only be brought into harmonization by corresponding new signals.

### BESA key figures:

<b>up to 0,79</b>	very deep energetic regulatory disorder (SSD) energy deficiency
<b>0,8 to 1,19</b>	strong energetic regulation disturbance (SD) degeneration/energy deficiency
<b>1,2 to 1,59</b>	energetic regulation disorder (D) degeneration/energy deficiency
<b>1,6 to 1,99</b>	degenerative transition area (DÜ)
<b>2,0 to 2,39</b>	optimal regulation (OR)
<b>2,4 to 2,79</b>	in the regulation (R)
<b>2,8 to 3,19</b>	partial inflammation = regional energy excess (PE)
<b>from 3,2</b>	total inflammation = strong general energy surplus (TE)





## Basics of the research project creation P72

The international professional association for bioenergetic system analysis was commissioned by the company Leela Quantum Tech LLC to test or prove the effect of the test object "Leela Quantum Bloc" by means of bioenergetic system analysis (BESA). The testing took place independently of the subjective feeling of all test persons.

### **Description of the "Leela Quantum Bloc" by the client:**

"Leela Quantum Bloc" is a quantum space generator and concentrator, which is highly concentrated inside the device between the plates. At the same time, the Quantum Bloc has an energetic extension of more than 100 meters, which however does not represent the concentrated quantum space, but a positive energetic quantum field. This quantum field neutralizes and harmonizes on the one hand negative frequencies and vibrations and on the other hand provides overall positive, inviting and peaceful energy. In the quantum space itself (between the plates), each object that is placed there is energetically restructured, optimized and charged with quantum energy within 60 seconds. It can be said from previous tests that any object that has been in the "Leela Quantum Bloc" becomes "better". Whether that is water, food, jewelry, technical devices, etc. The essential difference of the "Quantum Bloc" to other "quantum energy producing devices" is that the Quantum Bloc works on more than one level of consciousness (and thus on this level one-dimensional, figuratively represented like a flat field). The Quantum Bloc works on more than 50 levels at the same time and is therefore a multidimensional quantum space in every respect. This has the advantage, also among others compared to other devices, that even if the energy is increased, there is no imbalance or negative energetic pressure. This is especially important for users whose organism cannot yet handle such higher energy levels. Furthermore, the "Leela Quantum Bloc" needs only about 30 seconds to transfer a frequency in it from one object to another. We have also been able to observe this in 20 seconds, but officially advise a minute (60 seconds).

### The client assumes that the Quantum Bloc can produce the following effects:

- charge any object with comprehensive, positive quantum energy.
- For clarification: energies are always neutral. With "positive" the client wants to refer to the positively affecting energy of the objects in the room such as people, animals, plants, etc.
- copy any frequencies within only 1 minute
- harmonizing energy field for home, workplace, car, etc.
- harmonization of any negative frequencies
- helps to dive deeper into one's own consciousness (whether in meditation, daily life, "retrieving" information, etc.)



- optimizes food, water and all other substances
- positive effect on human cells and body (physical and energetic). For this purpose it is enough just to be in the expanded field of the Quantum Block. If one part of the body is in the concentrated quantum space, automatically not only the cells of this one part of the body, but the cells of the whole body are intensively touched.
- neutralizes unwanted "dark entities" or keeps them away due to the high light vibration or "brings" them into the light
- cleanses the aura
- supports positive affirmations within the framework of legality and also accelerates their manifestation within the framework of legality

## Research funding services of the IFVBESA - BESA- reference tests

General information about this project:

This detailed project P72 2.0 is about the proof of effect of the "Leela Quantum Bloc" on wrist watches. Two test persons were selected for this project.

Wrist watches, especially battery-operated quartz wrist watches, permanently generate micro current surges to drive the watch hands. Normally, these watches are only worn during the day, but just as many people wear these watches day and night. Due to this permanent use, these electric surges affect people's bioenergetic system. Apart from this, the battery generates a permanently acting electromagnetic field at the bioenergetically sensitive points of the wrists.

On test person 1 the effect of the "Leela Quantum Bloc" is tested on an automatic watch, without battery operation. It is additionally questioned on the test person whether the stressful effects of heavy metals such as mercury, aluminum, lead and arsenic in correlation with EMSF (electromagnetic interference fields) can be neutralized by the effect of the "Leela Quantum Block". EMSFs tested include: WLAN, Smartmeter, a connected cell phone via generation 4G and 5G.

Subject 2 will be used to test the effect of the "Leela Quantum Bloc" on a quartz wristwatch in battery mode. In this project the question is investigated whether the effect of the "Leela Quantum Block" is able to neutralize the possibly occurring interference fields of the watch. The client starts from the claim that the application of the "Leela Quantum Bloc" is able to neutralize the possibly negative effects of the watches on the energy system of the test persons. The Leela Quantum Block is thus said to be practically and factually capable of bringing the deregulation thus tested by the wristwatch back into the physiological norm. This is being tested on test persons via this BESA project.



The "Leela Quantum Bloc" was tested according to the requirements of the client within the framework of the applicable conditions of the IFVBESA for the award of quality seals. Depending on the significance of the test results, seals of approval are awarded in 3 categories, taking into account all tests of a project.

The client and developer of the "Leela Quantum Bloc" assumes that it is able to neutralize the displayed deregulations from the wristwatches on the test person again as well as to replace the associated negative states with positive states.

Whether the "Leela Quantum Bloc" is able to do this is to be questioned in the following commissioned BESA tests on the test person.

#### To the general information of the information transfer:

The information transfer takes place from the hyperspace of the test object to the hyperspace of biological objects (humans, animals, plants). From there, the information reaches the reference space or the energy space via so-called interaction channels. This is a union of, among other things, all organs and energy forms in the biological object. There, the information of the program can dynamically materialize and thus change current states. The changes can appear in the form of neutralization or harmonization of disturbances, dissolution of problems, blockages and disharmonies.

### Research project description (detailed project)

The reason for the tests is to prove the functionality of the "Leela Quantum Bloc" by test results, which are to be obtained by testing the subjects for deregulations by the wristwatches in order to significantly prove and compare their responses without the "Leela Quantum Bloc" and with the "Leela Quantum Block".

- The BEFORE measurements are made without the "Leela Quantum Bloc"
- The AFTER measurements are made after activation by the "Leela Quantum Bloc"

**The question in the AFTER measurement is:** "Is the "Leela Quantum Bloc" suitable and able to neutralize the so perceived negative effects of wristwatches on the organism of the test person?"

The appropriately designed tests should provide information about this by comparing the preliminary measurements without the "Leela Quantum Bloc" with the test results of the follow-up measurements to be carried out using the "Leela Quantum Bloc".

The concern of the development team of the company Leela Quantum Tech LLC is to have it determined whether the test object, the "Leela Quantum Bloc" as noted in the product description is suitable to neutralize the deficiency symptoms as well as the associated disturbances in the meridian system of the test person.





### Conditions:

The BESA tests are performed in the premises of IFVBESA under laboratory conditions, at room temperature 20° Celsius, on natural wooden floor. The test persons are deswitcht (made testable) before the BESA tests or the test possibilities are questioned with the respective test person.

- Pos.1** BESA Basic testing BEFORE (bioenergetic status) on all test persons
- Pos.2** BESA testing BEFORE of heavy metals and EMSF on 1 test person
- Pos.3** BESA testing BEFORE effects of the quartz clock on 1 test person
- Pos.4** BESA testing AFTER of the wristwatches activated by the Leela Quantum Bloc
- Pos.5** Evaluation of the results in the detailed project as well as summary in the corresponding expert opinion according to sample

### Procedure and specifications for the execution

1. **BESA-baseline measurement** of the test person at all previously determined measurement points (TING points). This corresponds to the actual condition, so to speak. The results are determined exactly according to the BESA specifications and documented via the known BESA graphs.
2. the test person is brought into contact with the respective stress factors depending on the project, whereby the sequence discussed with the client is regarded as the specification and is adhered to accordingly. In order to be able to determine the current energy state, the measuring points mentioned under point 1 are measured in the same order and for the same duration during each test. The results are determined exactly according to the BESA specifications and documented via the BESA graphs.

3. **Activation of the test object**

To **activate the wristwatches**, they are placed in the "Leela Quantum Block" as specified by the client. Subsequently, the test subjects are contacted with the activated wristwatches. The measuring points mentioned under point 1 are measured in the same order and time duration to determine the current energy state. The results are determined exactly according to the BESA specifications and documented via the BESA graphs.

## Test procedure

### BESA 1 BASIC Testing BEFORE as a status

In the first step, a basic bioenergetic test (bioenergetic status) is performed on the meridian end points (TING points) of the test person.

### BESA 2 Testing BEFORE with heavy metals



In the further BESA testing process, the effect of the heavy metals is tested on subject 1. The question is: How does the meridian system react? How does the energetic status change when confronted with the heavy metals? What are the differences compared to the BESA 1 BASIC test BEFORE?

### **BESA 3 Testing BEFORE with heavy metals and EMSF**

In the further BESA test procedure, the effect of the heavy metals is tested in correlation with EMSF on subject 1. The question is: How does the meridian system react? How does the energetic status change when confronted with the interference fields? What are the differences compared to the BESA 1 BASIC test BEFORE?

### **BESA 4 Testing BEFORE – battery operated wrist quartz watch**

In the further course of the BESA test, the effect of the battery-operated wrist quartz watch is tested on test person 2. The question is: How does the meridian system react? How does the energetic status change when confronted with the battery-operated quartz watch? What are the differences compared to the BESA 1 BASIC test BEFORE?

### **BESA 5 Testing AFTER the wristwatches activated in the „Leela Quantum Bloc“**

In this BESA test, the wristwatches activated in the "Leela Quantum Block" prior to the BESA test are introduced into the measurement circuit. Now the question is: How does the meridian system of the test persons react to the wristwatches activated in the "Leela Quantum Blocc"?



# Proband 1

## BESA 1 Testing BASIC-BEFORE

### BESA 1 BASIC Testing BEFORE as a status

Eva Krankl performs a BESA basic measurement on the test person. All BESA tests are performed at the TING points (40 nail fold points on the fingers and toes).

**Goal:** The creation of a basic test (status) as a representation of the energetic initial situation for all further BESA tests.

BESA Test evaluation P72 2.0

from **28-01-2021 at 09:57 – 10:05** (8 Minutes) page 12 and 13

**result:** The overall measurement result indicated slight energetic stress at the meridian endpoints and subsequently on the subordinate metabolic situation of the test person.

**65 % in the blue area**

**32 % in the green area**

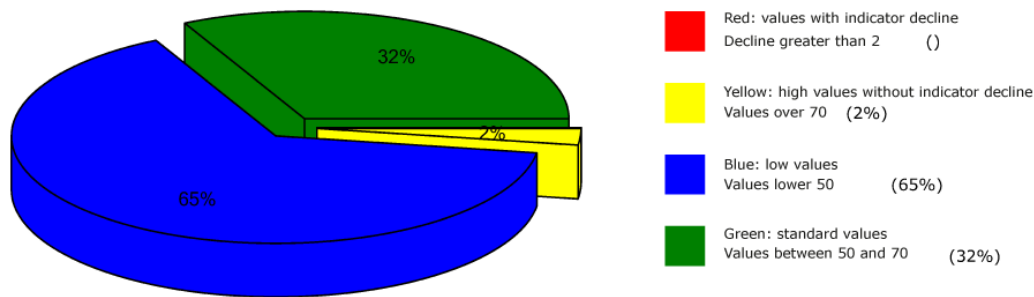
**2 % in the yellow area**

**1 % in the green transition area**

**Conclusion:** As the BESA graphs and pie chart show, 65% of the measurement results were in the blue, degenerative range (energy deficiency). As can be seen from this BESA-BASIC test, the blue measurement values are just at the 50 sct mark (green and optimal measurement value). Here one can speak of a good BESA status.



## Overview of BESA measuring



## BESA basic test

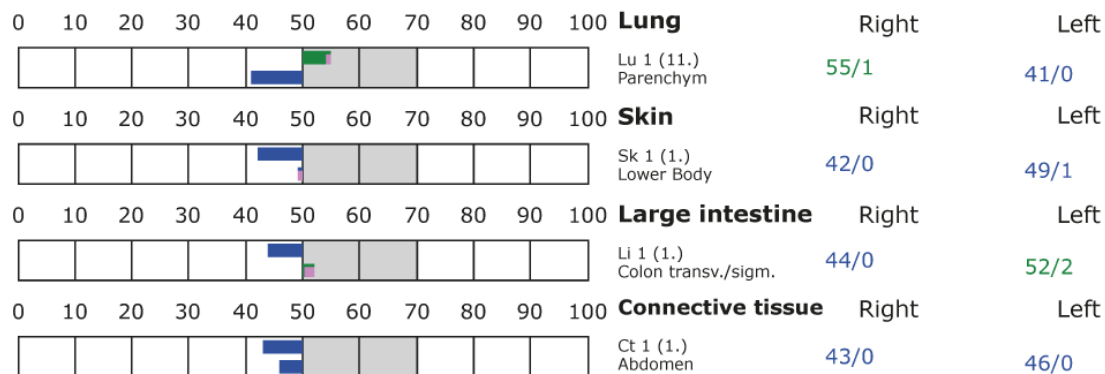
+++ : Indicator decline > 15 Skt.  
++ : Indicator decline 6-15 Skt.  
+ : Indicator decline 3-5 Skt.

T: Total inflammation (>89 Skt.)  
P: Partial inflammation (70-89 Skt.)

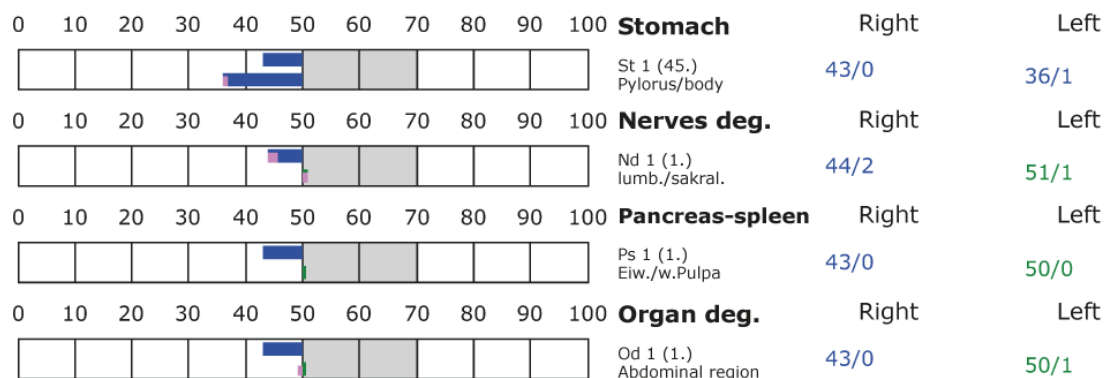
D: Degeneration (< 50 Skt.)

Standard values: (50-70 Skt.)

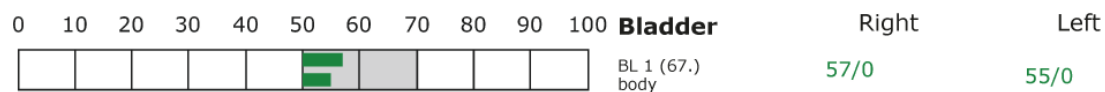
### Element: lu - sk - li - ct



### Element: st - nd - ps - od



### Element: bl - ly - ki - al





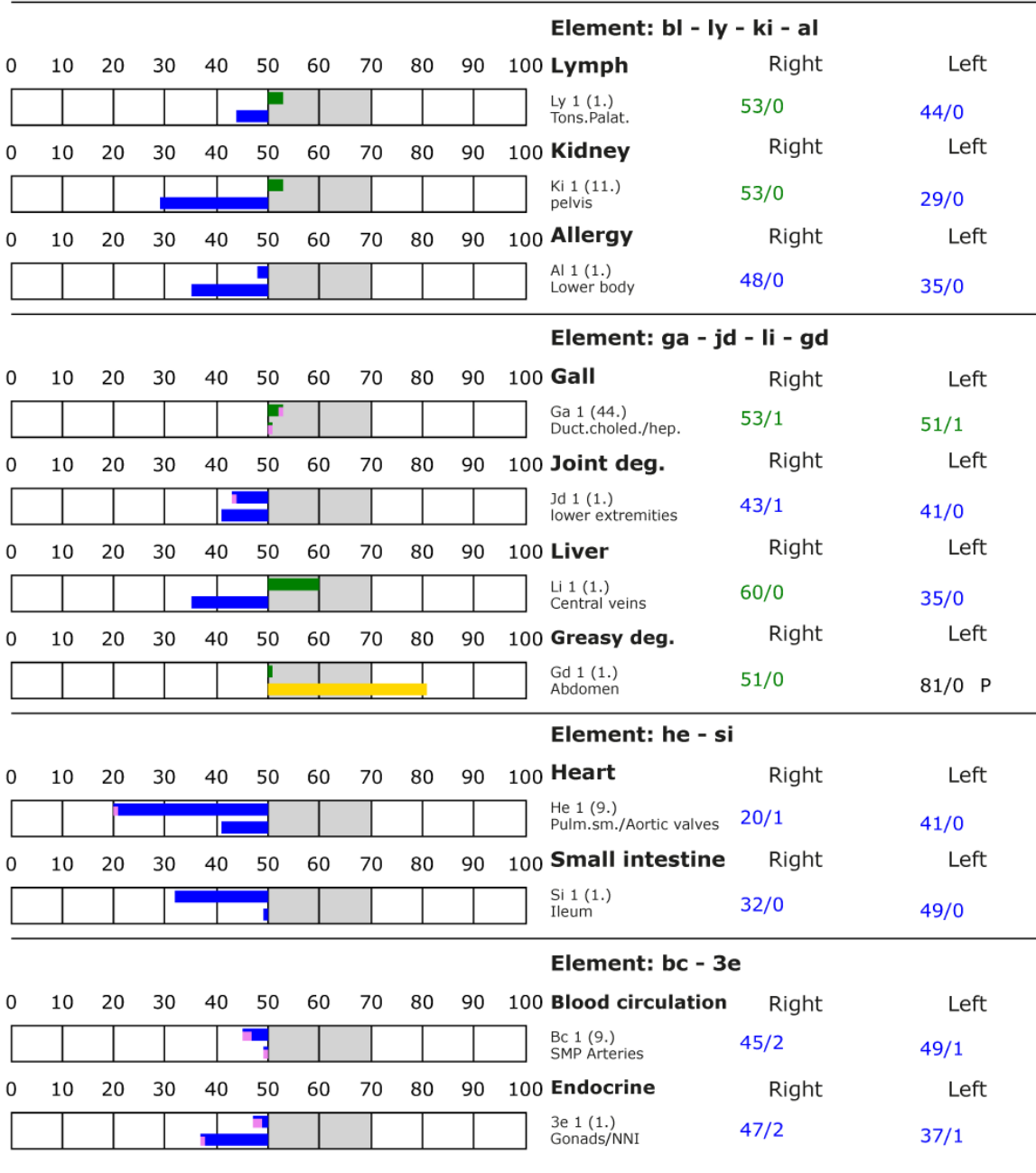
## BESA basic test

+++ : Indicator decline > 15 Skt.  
++ : Indicator decline 6-15 Skt.  
+ : Indicator decline 3-5 Skt.

T: Total inflammation (>89 Skt.)  
P: Partial inflammation (70-89 Skt.)

D: Degeneration (< 50 Skt.)

Standard values: (50-70 Skt.)





## BESA 2 Testing BEFORE

### **BESA 2 Testing BEFORE – heavy metals such as mercury, aluminum, lead and arsenic**

In the further BESA test procedure, the heavy metals are introduced into the measuring circuit and tested on the test person. All BESA tests are performed at the TING points (40 nail fold points on the fingers and toes).

**Goal:** These heavy metals are common poisonings to which all people of modern civilization are exposed. To determine the response of the subject's meridian system within these heavy stress factors. Determination of the differences compared to the BESA 1 test BASIC BEFORE.

#### BESA Test evaluation P72 2.0

from **28-01-2021 at 10:05 – 10:18** (13 Minutes) page 15 and 16

**result:** The measurement result indicated heavy energetic stress at the meridian endpoints and subsequently on the subordinate metabolic situation of the test person.

**87 % in the blue area**

**12 % in the red area**

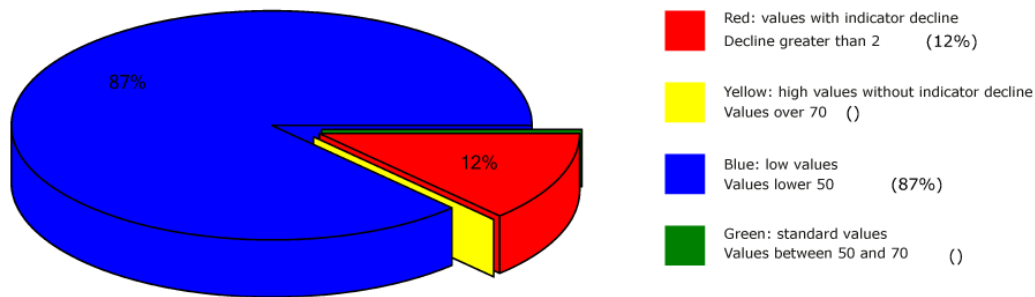
**1 % in the yellow transition area**

**Conclusion:** As the BESA graphs show, many measurement points are in the degenerative blue area (energy deficiency). However, the picture is dramatic due to the now predominant measured values in the red area. Here it is important to mention that the BESA 1 testing BASIC BEFORE was very good and the proband does not suffer from any previous stress! This BESA test showed a significant deterioration of the subject's energetic situation compared to the BESA 1 test BASIC BEFORE. The red readings represent a total deregulation of these energy areas. This means that the energy system of the organism would seriously damage the test person in case of permanent influences of such or similar interference fields. For a balancing of these red readings or, in other words, for a neutralization of the values, the energy system needs a strong positive impulse from outside. The comparisons of the BESA graphs confirm the change and the stressing influences by the heavy metals on the test person.





## Overview of BESA measuring



## BESA basic test

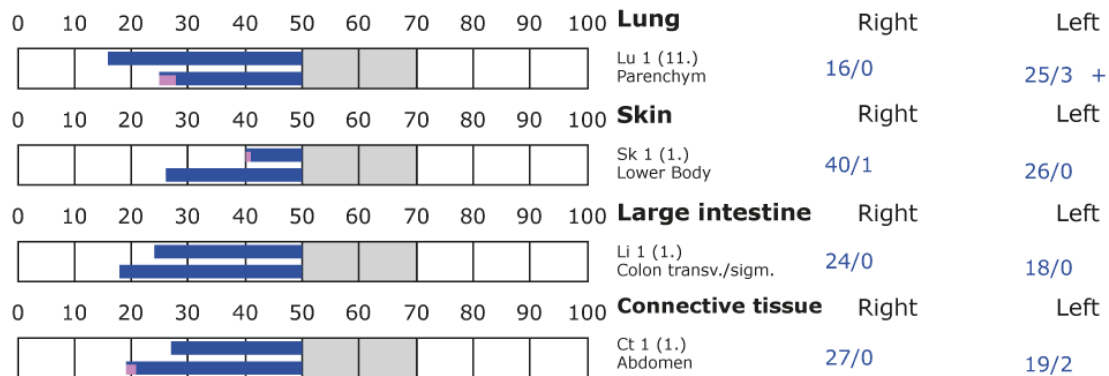
+++ : Indicator decline > 15 Skt.  
++ : Indicator decline 6-15 Skt.  
+ : Indicator decline 3-5 Skt.

T: Total inflammation (>89 Skt.)  
P: Partial inflammation (70-89 Skt.)

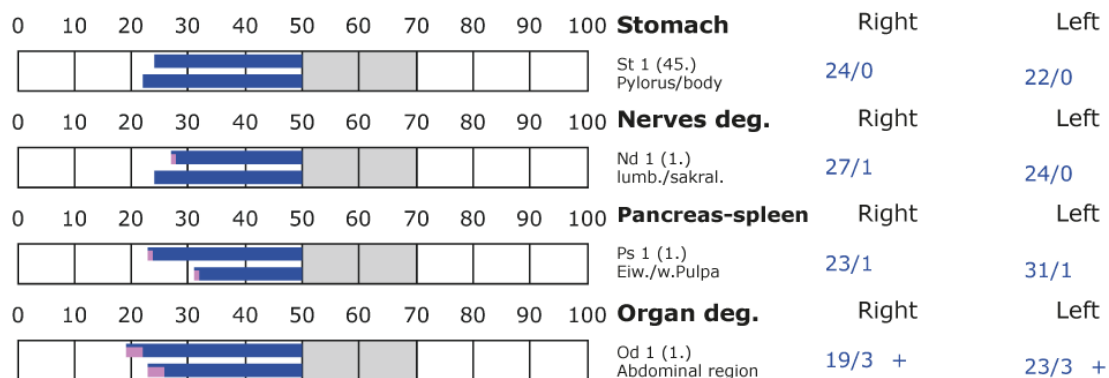
D: Degeneration (< 50 Skt.)

Standard values: (50-70 Skt.)

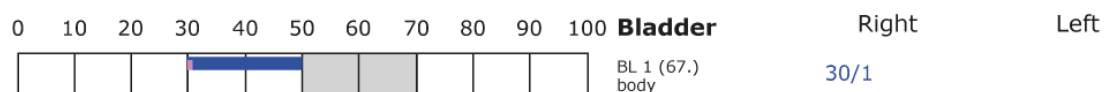
### Element: lu - sk - li - ct



### Element: st - nd - ps - od



### Element: bl - ly - ki - al





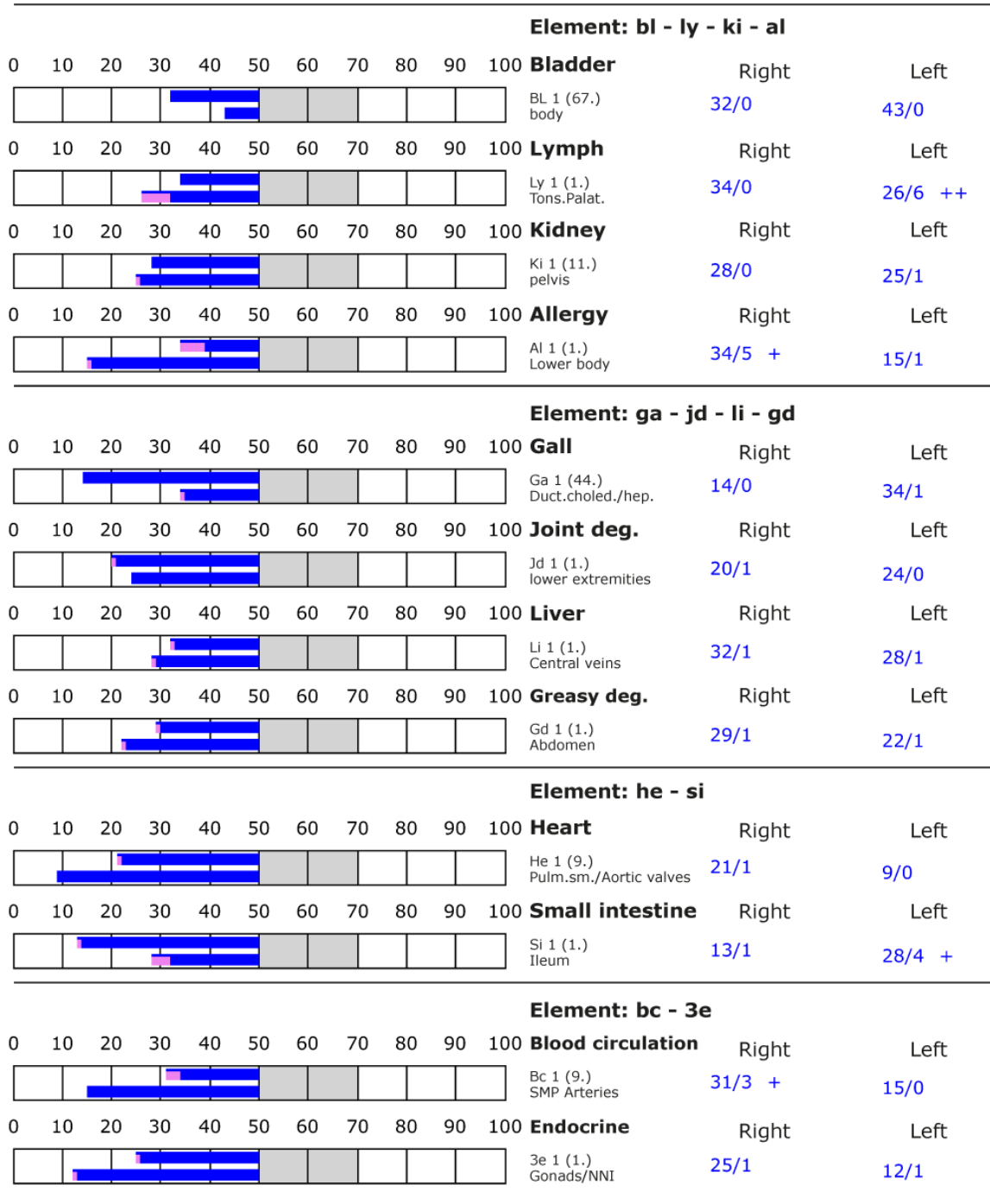
## BESA basic test

+++ : Indicator decline > 15 Skt.  
++ : Indicator decline 6-15 Skt.  
+ : Indicator decline 3-5 Skt.

T: Total inflammation (>89 Skt.)  
P: Partial inflammation (70-89 Skt.)

D: Degeneration (< 50 Skt.)

Standard values: (50-70 Skt.)





## BESA 3 Testing BEFORE

### **BESA 3 Testing BEFORE – heavy metal such as mercury, aluminum, lead and arsenic and EMSF**

In the further BESA testing process, in addition to the heavy metals from the BESA 2 testing, EMSF are also introduced into the measuring circuit and tested on the test person. In addition to WLAN and Smartmeter, a connected cell phone is integrated into the measurement circuit. The phone is located on the right thigh of the test person.

**Goal:** To determine the response of the subject's meridian system within the severe exposure factors to heavy metals while correlating with EMSF. To determine the differences compared to BESA 1 and 2 testing BEFORE.

#### BESA Test evaluation P72 2.0

from **28-01-2021 at 10:19 – 10:24** (5 Minutes) page 18 and 19

**result:** The measurement result deteriorated further and indicated severe energetic stress at the meridian endpoints and subsequently on the subordinate metabolic situation of the subject.

**77 % in the blue area**

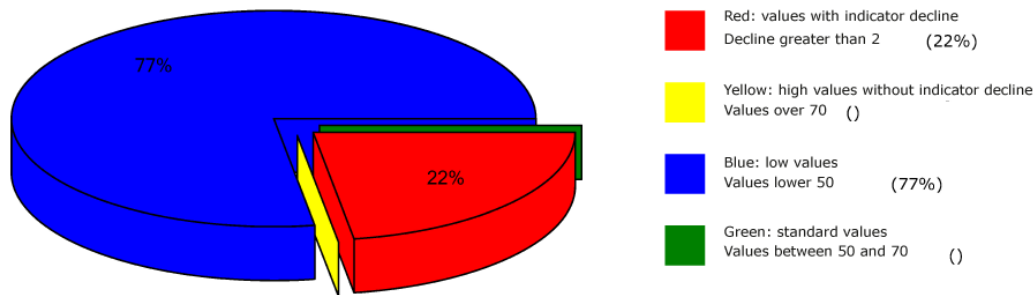
**22 % in the red area**

**1 % in the yellow transition area**

**Conclusion:** As the BESA graphs show, many measurement points are again in the degenerative blue area (energy deficiency). However, the picture is dramatic due to the now increased measurement values in the red area. It can be seen that the correlation of the information from the heavy metals with the EMSF create additional stress states. This BESA test showed a significant deterioration of the subject's energetic situation compared to the BESA 2 test BASIC BEFORE. The red readings represent a total deregulation of these energy areas. This means that the energy system of the organism would seriously damage the test person in case of permanent influences of such or similar interference fields. For a balancing of these red readings or, in other words, for a neutralization of the values, the energy system needs a strong positive impulse from outside. The comparisons of the BESA graphs confirm the change and the stressing influences by the heavy metals in correlation with the EMSF on the test person.



## Overview of BESA measuring



## BESA basic test

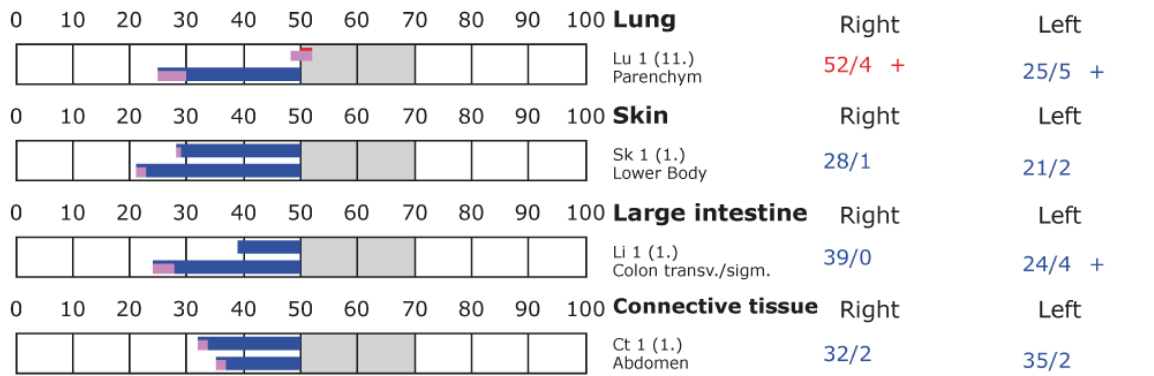
+++ : Indicator decline > 15 Skt.  
++ : Indicator decline 6-15 Skt.  
+ : Indicator decline 3-5 Skt.

T: Total inflammation (>89 Skt.)  
P: Partial inflammation (70-89 Skt.)

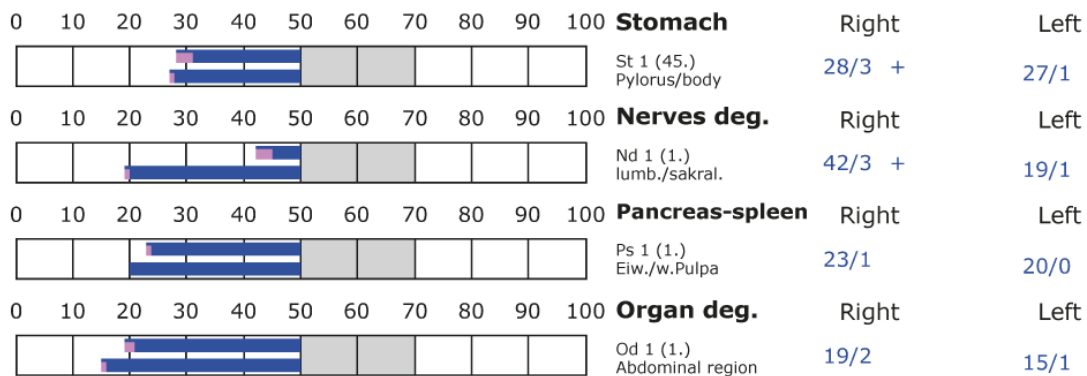
D: Degeneration (< 50 Skt.)

Standard values: (50-70 Skt.)

### Element: lu - sk - li - ct



### Element: st - nd - ps - od





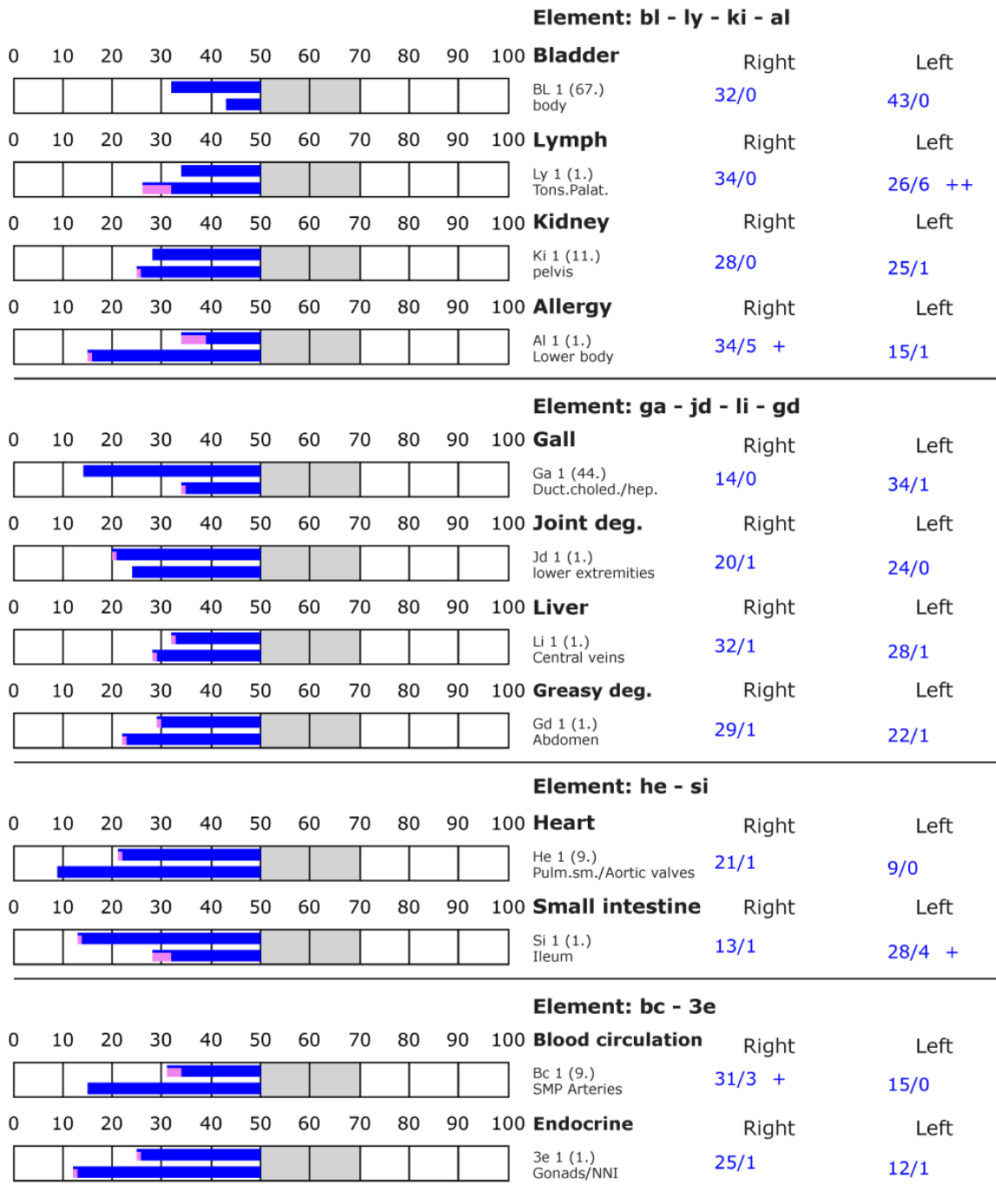
## BESA basic test

+++ : Indicator decline > 15 Skt.  
++ : Indicator decline 6-15 Skt.  
+ : Indicator decline 3-5 Skt.

T: Total inflammation (>89 Skt.)  
P: Partial inflammation (70-89 Skt.)

D: Degeneration (< 50 Skt.)

Standard values: (50-70 Skt.)





## BESA 4 Testing AFTER

### **BESA 4 Testing AFTER activation of the automatic wristwatch in the „Leela Quantum Bloc“**

BESA 4 test AFTER activation of the automatic wristwatch in the "Leela Quantum Block". Beforehand, the automatic wristwatch was energetically charged for 24 hours in the "Leela Quantum Block". In the further course of the BESA test, the wristwatch is now attached to the subject's left wrist and the effect is tested on the subject.

**Goal:** To determine the reaction of the subject's meridian system when the automatic wristwatch activated by the "Leela Quantum Block" acts on the subject? To determine the differences compared to BESA 1, BESA 2 and BESA 3 tests BEFORE.

BESA Test evaluation P72 2.0

from **28-01-2021 at 10:24 – 10:32** (8 Minutes) page 21 and 22

**result:** Result: The measurement result shows significant improvements at the meridian endpoints or at the energetic state of the test person.

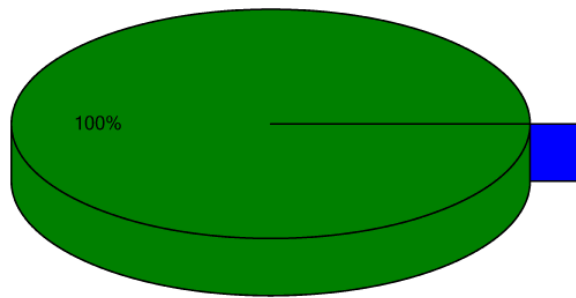
**100 % in the green area**

**Conclusion:** As the BESA graphs show, after the automatic wristwatch activated by the "Leela Quantum Block", all measurement points were in the green, optimal and neutralized range (balanced energy system). The BESA testing shows a significant improvement of the energy situation in the meridian system of the test person compared to the BESA 1, BESA 2 and especially BESA 3 tests BEFORE. It is shown that the "Leela Quantum Block" is able to give the red readings (total deregulation) detected in the BESA testing BEFORE a necessary impulse for harmonization (neutralization) into a life-supporting area. The comparisons of the BESA graphs confirm the change and resolution of the stressed (red) acupuncture points on the meridian system of the subject.





## Overview of BESA measuring



- Red: values with indicator decline  
Decline greater than 2 ( )
- Yellow: high values without indicator decline  
Values over 70 ( )
- Blue: low values  
Values lower 50 ( )
- Green: standard values  
Values between 50 and 70 (100%)

## BESA basic test

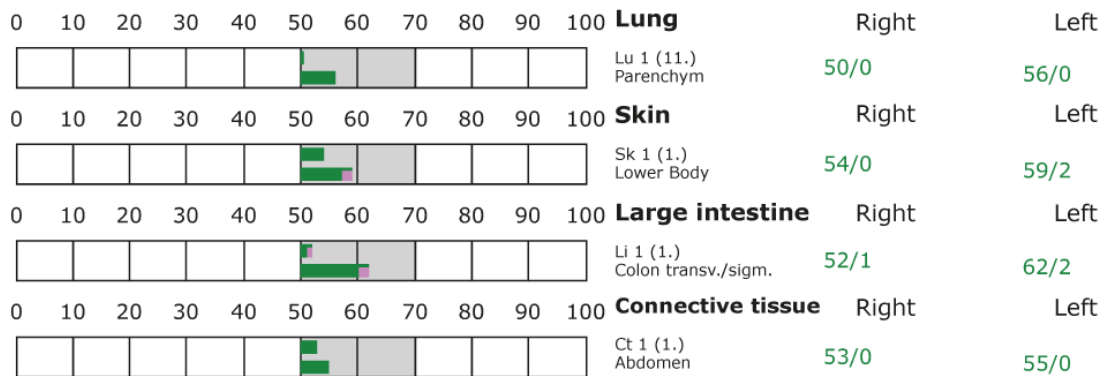
+++ : Indicator decline > 15 Skt.  
++ : Indicator decline 6-15 Skt.  
+ : Indicator decline 3-5 Skt.

T: Total inflammation (>89 Skt.)  
P: Partial inflammation (70-89 Skt.)

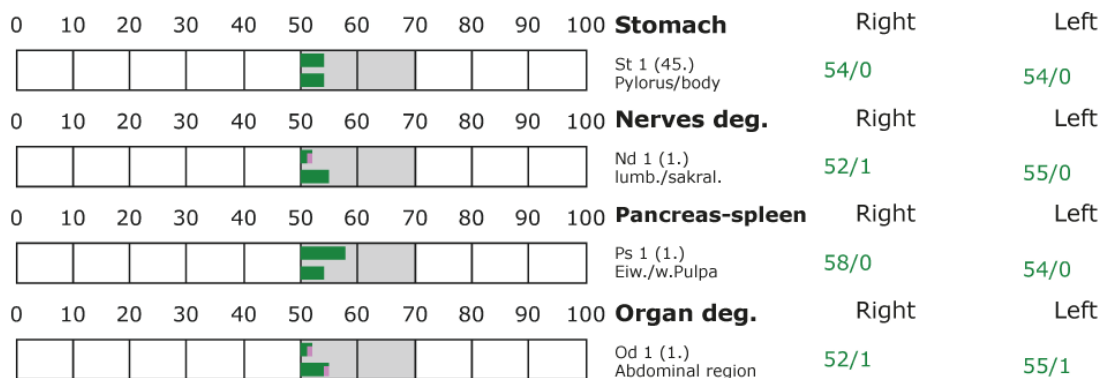
D: Degeneration (< 50 Skt.)

Standard values: (50-70 Skt.)

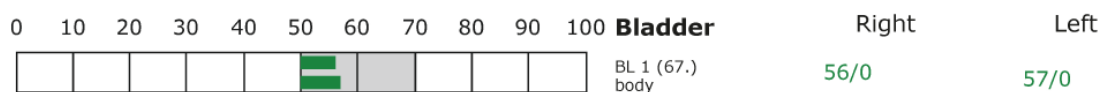
### Element: lu - sk - li - ct



### Element: st - nd - ps - od



### Element: bl - ly - ki - al





## BESA basic test

+++ : Indicator decline > 15 Skt.  
++ : Indicator decline 6-15 Skt.  
+ : Indicator decline 3-5 Skt.

T: Total inflammation (>89 Skt.)  
P: Partial inflammation (70-89 Skt.)

D: Degeneration (< 50 Skt.)

Standard values: (50-70 Skt.)

Element: bl - ly - ki - al													
0 10 20 30 40 50 60 70 80 90 100					<b>Lymph</b>	Right	Left						
					Ly 1 (1.) Tons.Palat.	51/1	62/1						
0 10 20 30 40 50 60 70 80 90 100					<b>Kidney</b>	Right	Left						
					Ki 1 (11.) pelvis	55/0	55/0						
0 10 20 30 40 50 60 70 80 90 100					<b>Allergy</b>	Right	Left						
					Al 1 (1.) Lower body	51/0	60/1						
Element: ga - jd - li - gd													
0 10 20 30 40 50 60 70 80 90 100					<b>Gall</b>	Right	Left						
					Ga 1 (44.) Duct.choled./hep.	54/0	59/0						
0 10 20 30 40 50 60 70 80 90 100					<b>Joint deg.</b>	Right	Left						
					Jd 1 (1.) lower extremities	55/1	55/1						
0 10 20 30 40 50 60 70 80 90 100					<b>Liver</b>	Right	Left						
					Li 1 (1.) Central veins	58/0	59/1						
0 10 20 30 40 50 60 70 80 90 100					<b>Greasy deg.</b>	Right	Left						
					Gd 1 (1.) Abdomen	53/0	55/0						
Element: he - si													
0 10 20 30 40 50 60 70 80 90 100					<b>Heart</b>	Right	Left						
					He 1 (9.) Pulm.sm./Aortic valves	55/2	55/2						
0 10 20 30 40 50 60 70 80 90 100					<b>Small intestine</b>	Right	Left						
					Si 1 (1.) Ileum	55/2	60/2						
Element: bc - 3e													
0 10 20 30 40 50 60 70 80 90 100					<b>Blood circulation</b>	Right	Left						
					Bc 1 (9.) SMP Arteries	51/1	61/2						
0 10 20 30 40 50 60 70 80 90 100					<b>Endocrine</b>	Right	Left						
					3e 1 (1.) Gonads/NNI	53/0	50/0						



## Proband 2

### BESA 1 Testing BASIC-BEFORE

#### **BESA 1 BASIC Testing BEFORE as a status**

Eva Krankl performs a BESA basic measurement on subject 2. All BESA tests are performed at the TING points (40 nail fold points on the fingers and toes).

**Goal:** The creation of a basic test (status) as a representation of the energetic initial situation for all further BESA tests.

BESA Test evaluation P72 2.0

from **28-01-2021 at 14:04 – 14:12** (8 Minutes) page 24 and 27

**result:** The overall measurement result indicated degenerative energetic stresses at the meridian endpoints and subsequently on the subordinate metabolic situation of the test person.

**95 % in the blue area**

**5 % in the green area**

**Conclusion:** As the BESA graphs and the pie chart show, 95% of the measurement results were in the blue, degenerative range (energy deficiency). 5% of the measured values were even in the green range (optimal range)



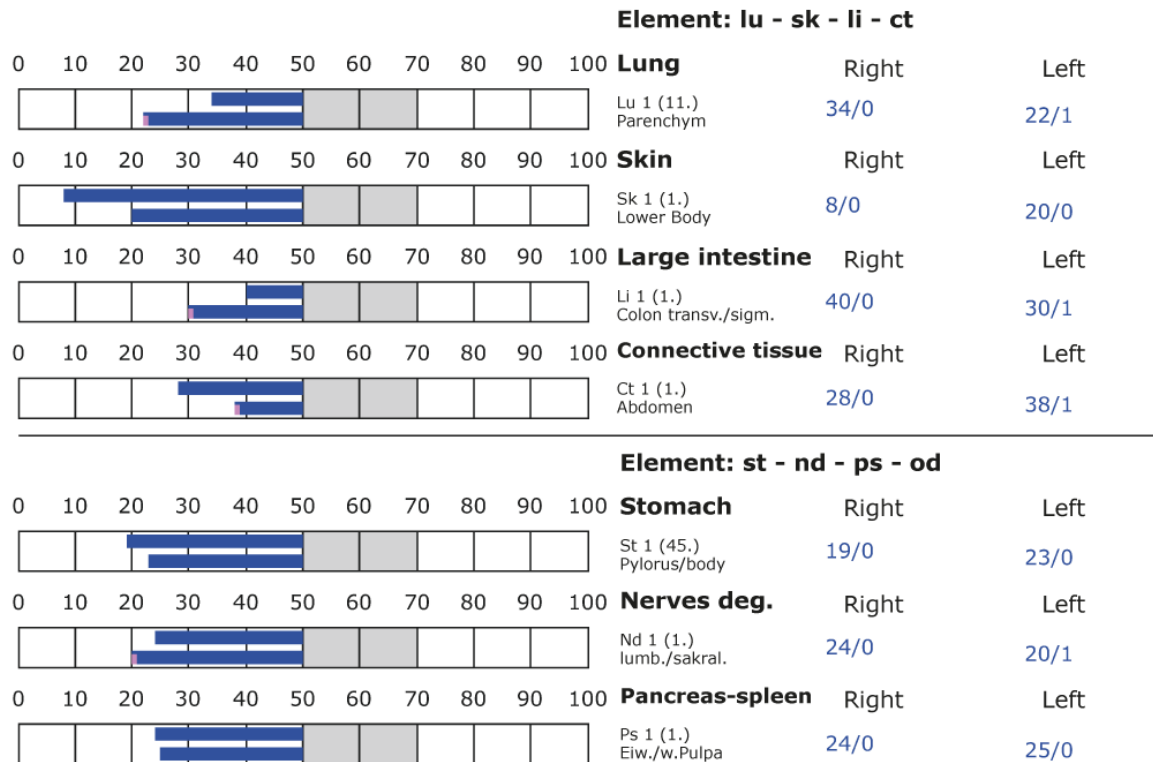
## BESA basic test

+++ : Indicator decline > 15 Skt.  
++ : Indicator decline 6-15 Skt.  
+ : Indicator decline 3-5 Skt.

T: Total inflammation (>89 Skt.)  
P: Partial inflammation (70-89 Skt.)

D: Degeneration (< 50 Skt.)

Standard values: (50-70 Skt.)





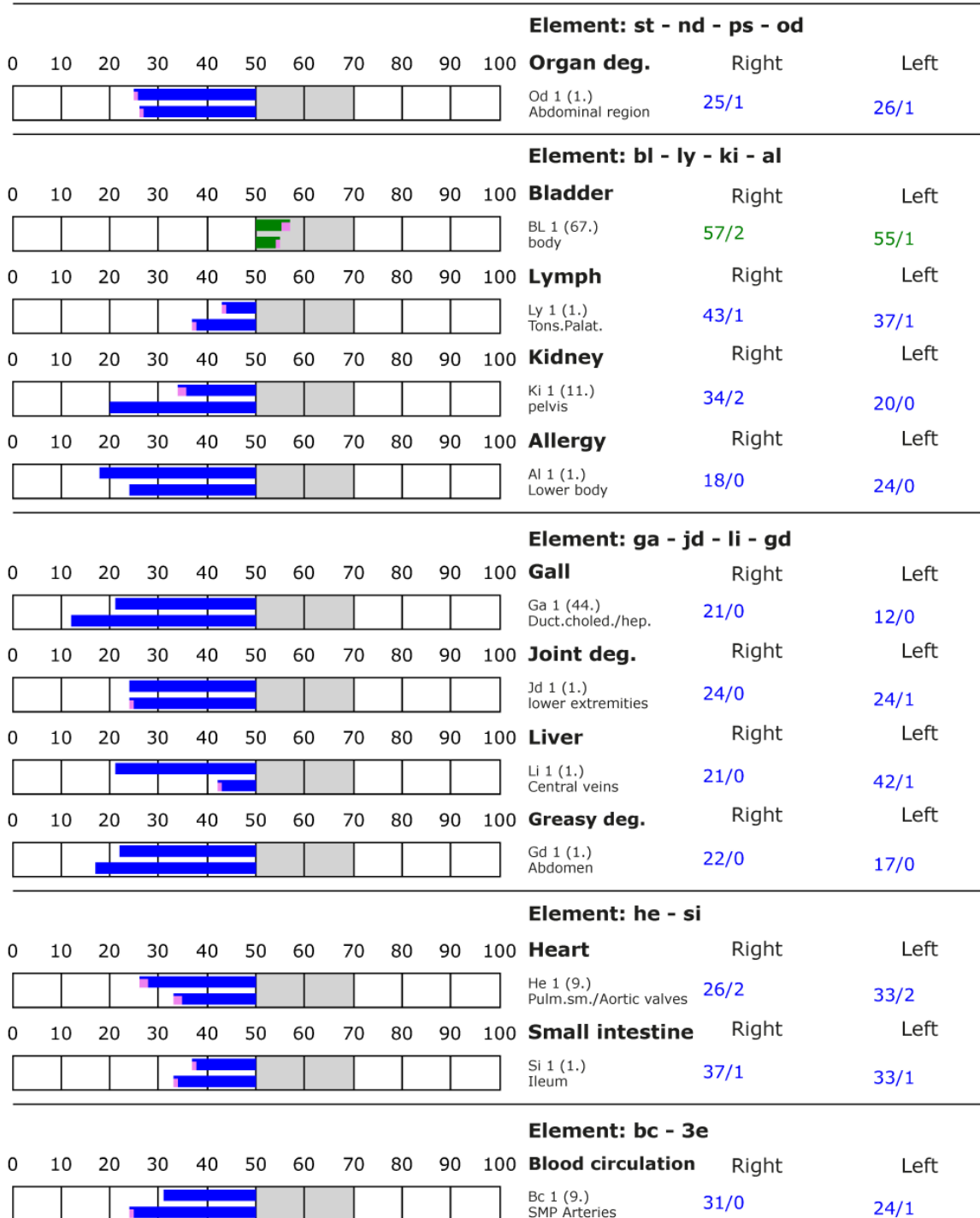
## BESA basic test

+++ : Indicator decline > 15 Skt.  
++ : Indicator decline 6-15 Skt.  
+ : Indicator decline 3-5 Skt.

T: Total inflammation (>89 Skt.)  
P: Partial inflammation (70-89 Skt.)

D: Degeneration (< 50 Skt.)

Standard values: (50-70 Skt.)





Internationaler Fachverband für BESA | ZVR Nr. 975047937  
Hauptstraße 1, A 4861 Kammer-Schörfling am Attersee | Österreich - Austria  
Tel.: +43 – 664 – 73152899 | E-Mail: [info@ifvbesa.at](mailto:info@ifvbesa.at)

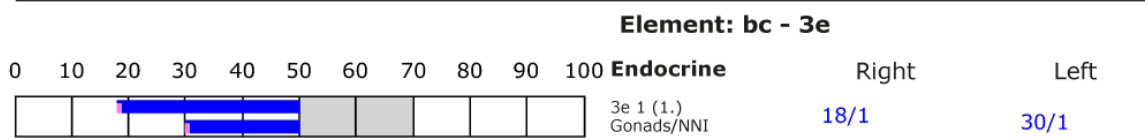
## BESA basic test

+++ : Indicator decline > 15 Skt.  
++ : Indicator decline 6-15 Skt.  
+ : Indicator decline 3-5 Skt.

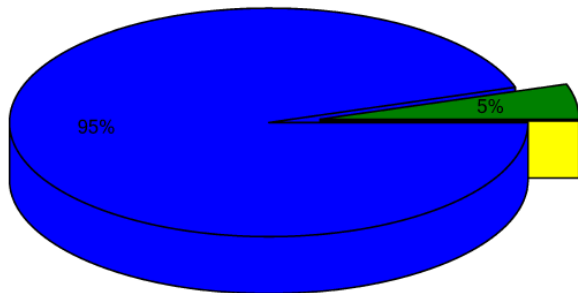
T: Total inflammation (>89 Skt.)  
P: Partial inflammation (70-89 Skt.)

D: Degeneration (< 50 Skt.)

Standard values: (50-70 Skt.)



## Overview of BESA measuring



- Red: values with indicator decline  
Decline greater than 2 ( )
- Yellow: high values without indicator decline  
Values over 70 ( )
- Blue: low values  
Values lower 50 (95%)
- Green: standard values  
Values between 50 and 70 (5%)





## BESA 2 Testing BEFORE

### BESA 2 Testing BEFORE – Battery-operated quartz wristwatch

In the further course of the BESA test, subject 2 places the battery-operated quartz wristwatch on his left wrist. This placed it in the BESA measurement circle. Eva Krankl then performed the BESA tests on the subject.

**Goal:** to determine the response of the subject's meridian system after the battery-powered quartz wristwatch was applied. Determination of the differences compared to the BESA 1 test BASIC BEFORE.

#### BESA Test evaluation P72 2.0

from **28-01-2021 at 15:14 – 15:20** (6 Minutes) page 28 at 30

**result:** The measurement result indicated heavy energetic stress at the meridian endpoints and subsequently on the subordinate metabolic situation of the test person.

**92 % in the blue area**

**5 % in the green area**

**2 % in the red area**

**1 % in the yellow transition area**

**Conclusion:** As the BESA graphs show, many measurement points are in the degenerative blue range (energy deficiency). However, the picture is dramatic due to the now added measurement values in the red area. It should be mentioned that compared to the BESA 1 test BASIC BEFORE, the blue measured values have developed deeper in the degeneration, respectively closer to 0. This BESA test showed a significant deterioration of the subject's energetic situation compared to the BESA 1 test BASIC BEFORE. The red readings represent a total deregulation of these energy areas. It is impressive to see the effect that such a small wristwatch can have on the subject. This means that the energy system of the organism would be considerably burdened in case of permanent influences of such interference fields. For a compensation of these red measured values or in other words: for a neutralization of the values the energy system needs a strong positive impulse from outside. The comparisons of the BESA graphs confirm the change and the burdening influences by this wristwatch on the test person.



## BESA basic test

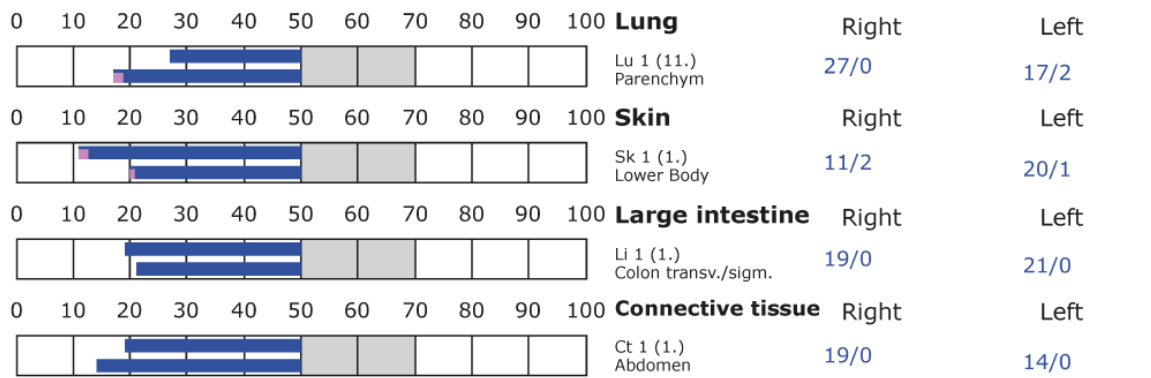
+++ : Indicator decline > 15 Skt.  
++ : Indicator decline 6-15 Skt.  
+ : Indicator decline 3-5 Skt.

T: Total inflammation (>89 Skt.)  
P: Partial inflammation (70-89 Skt.)

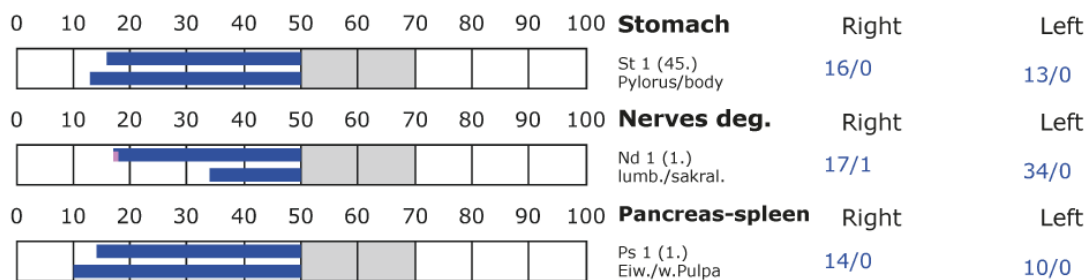
D: Degeneration (< 50 Skt.)

Standard values: (50-70 Skt.)

### Element: lu - sk - li - ct



### Element: st - nd - ps - od





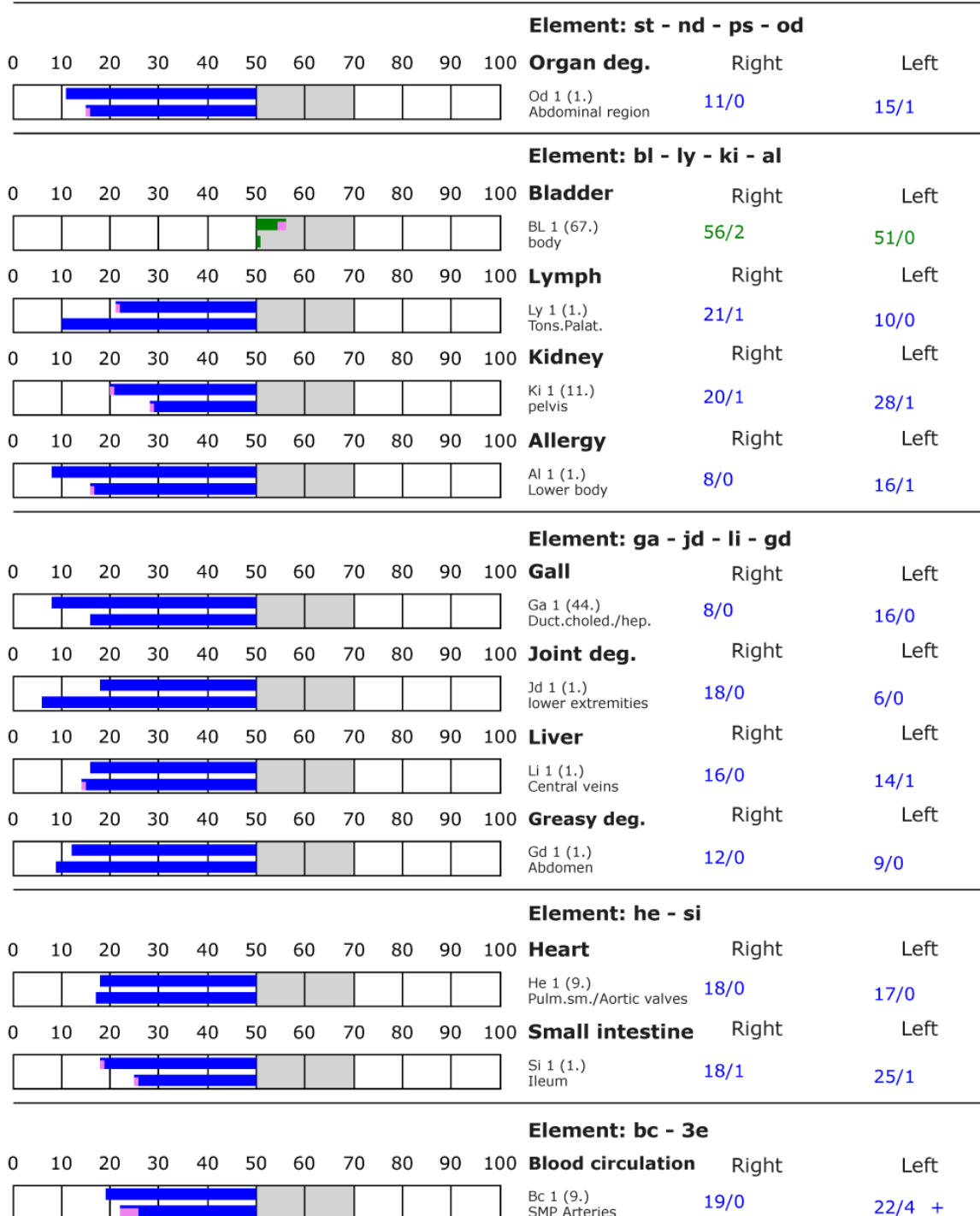
## BESA basic test

+++ : Indicator decline > 15 Skt.  
++ : Indicator decline 6-15 Skt.  
+ : Indicator decline 3-5 Skt.

T: Total inflammation (>89 Skt.)  
P: Partial inflammation (70-89 Skt.)

D: Degeneration (< 50 Skt.)

Standard values: (50-70 Skt.)





Internationaler Fachverband für BESA | ZVR Nr. 975047937  
Hauptstraße 1, A 4861 Kammer-Schörfling am Attersee | Österreich - Austria  
Tel.: +43 – 664 – 73152899 | E-Mail: [info@ifvbesa.at](mailto:info@ifvbesa.at)

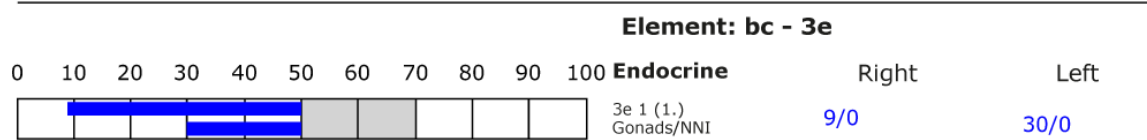
## BESA basic test

+++ : Indicator decline > 15 Skt.  
++ : Indicator decline 6-15 Skt.  
+ : Indicator decline 3-5 Skt.

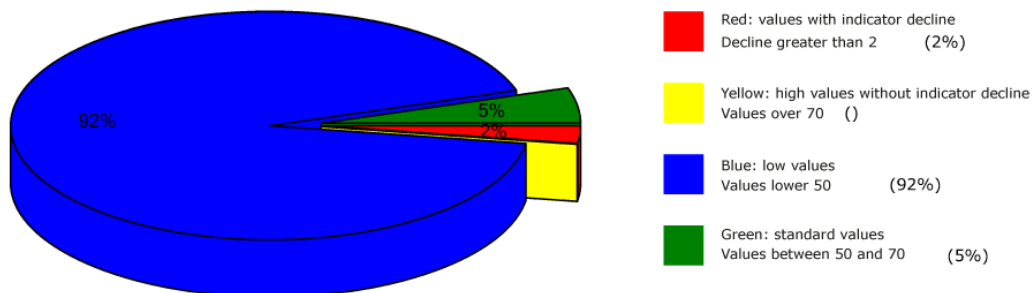
T: Total inflammation (>89 Skt.)  
P: Partial inflammation (70-89 Skt.)

D: Degeneration (< 50 Skt.)

Standard values: (50-70 Skt.)



## Overview of BESA measuring





## BESA 3 Testing AFTER

### **BESA 3 Testing AFTER activation of the battery-operated quartz wristwatch in the „Leela Quantum Bloc“**

Beforehand, the battery-operated quartz wristwatch was energetically charged for 1 hour in the "Leela Quantum Block". In the further course of the BESA test, the wristwatch is now placed on the subject's left wrist and the effect is tested on the subject.

**Goal:** To determine the reaction of the subject's meridian system when the battery-operated quartz wristwatch activated by the "Leela Quantum Block" acts on the subject? Determine the differences compared to BESA 1 and BESA 2 testing BEFORE.

BESA Test evaluation P72 2.0

from **28-01-2021 at 16:13 – 16:53** (39 Minutes) page 32 at 34

**result:** The overall measurement result showed significant improvements in the meridian endpoints or the energetic state of the subject.

**100 % in the green area**

**Conclusion:** As the BESA graphs show, after the battery-operated quartz wristwatch activated by the "Leela Quantum Block", all measurement points were in the green, optimal and neutralized range (balanced energy system). The BESA test results in a significant improvement of the energy situation in the meridian system of the test person compared to the BESA 1 and BESA 2 tests BEFORE. It is shown that the "Leela Quantum Block" is able to give the red readings (total deregulation) detected in the BESA testing BEFORE a necessary impulse for harmonization (neutralization) into a life-supporting range. The comparisons of the BESA graphs confirm the change and resolution of the stressed (red) acupuncture points on the meridian system of the subject.



## BESA basic test

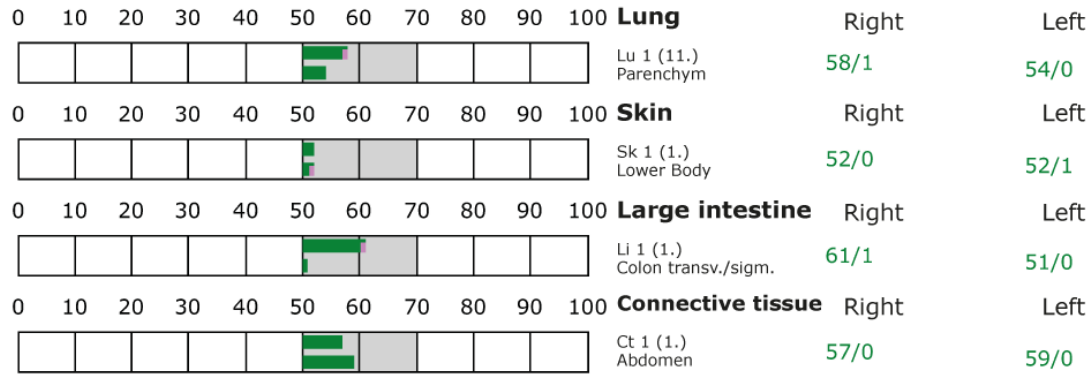
+++ : Indicator decline > 15 Skt.  
++ : Indicator decline 6-15 Skt.  
+ : Indicator decline 3-5 Skt.

T: Total inflammation (>89 Skt.)  
P: Partial inflammation (70-89 Skt.)

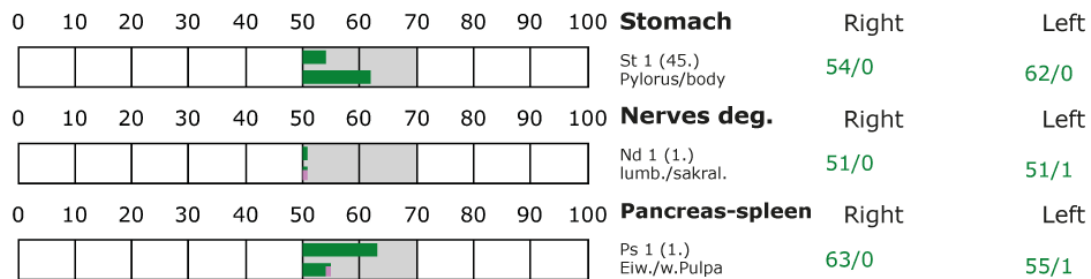
D: Degeneration (< 50 Skt.)

Standard values: (50-70 Skt.)

### Element: lu - sk - li - ct



### Element: st - nd - ps - od





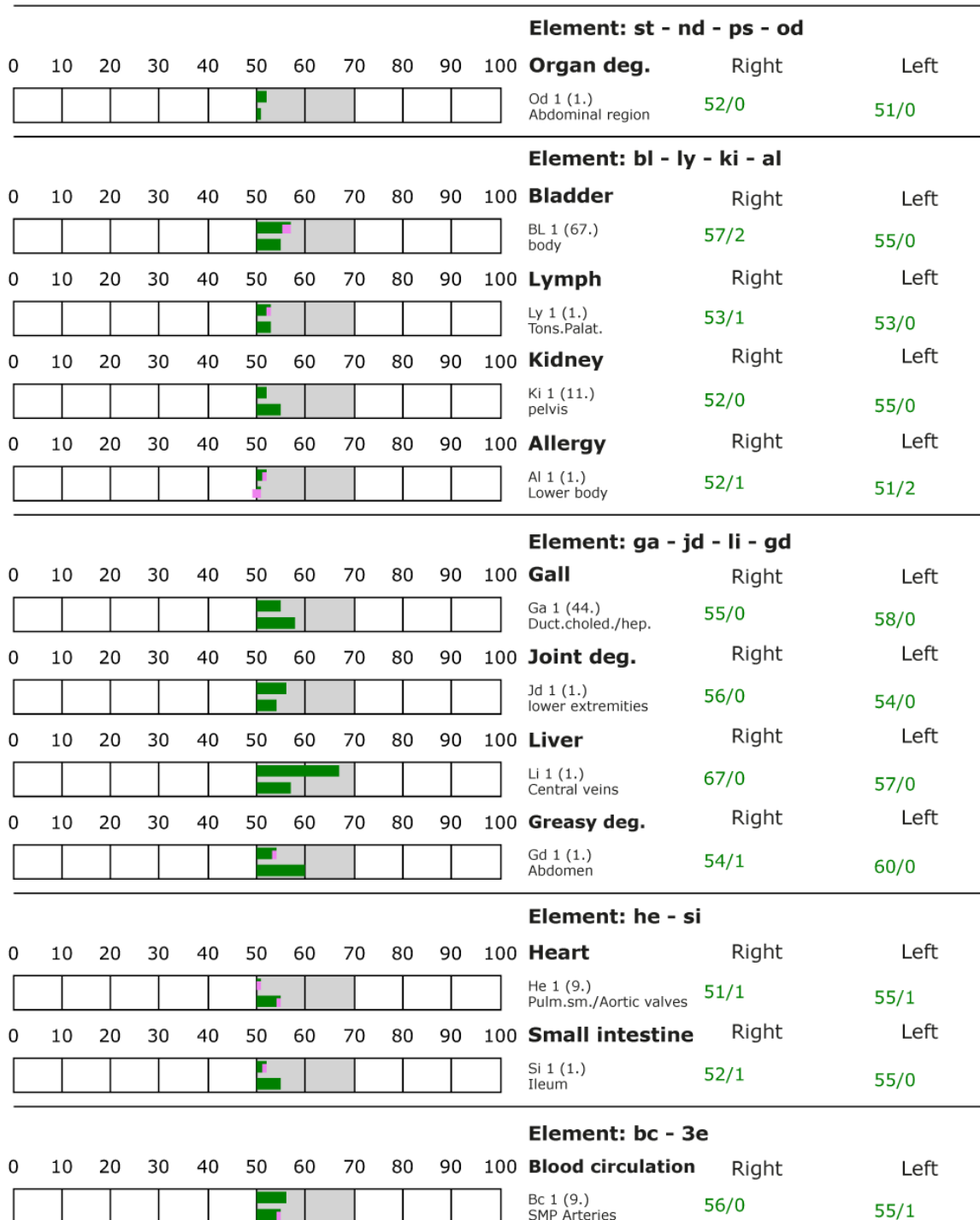
## BESA basic test

+++ : Indicator decline > 15 Skt.  
++ : Indicator decline 6-15 Skt.  
+ : Indicator decline 3-5 Skt.

T: Total inflammation (>89 Skt.)  
P: Partial inflammation (70-89 Skt.)

D: Degeneration (< 50 Skt.)

Standard values: (50-70 Skt.)







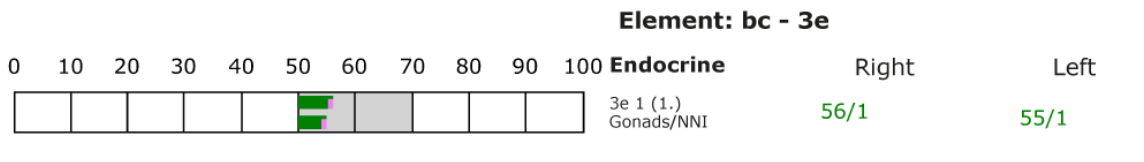
## BESA basic test

+++ : Indicator decline > 15 Skt.  
++ : Indicator decline 6-15 Skt.  
+ : Indicator decline 3-5 Skt.

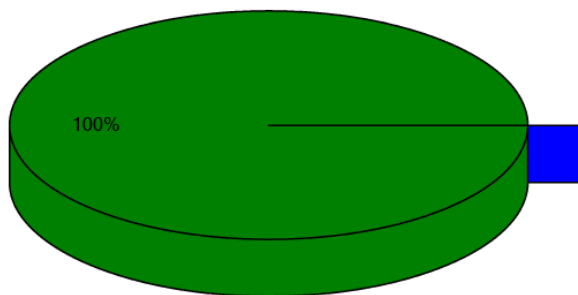
T: Total inflammation (>89 Skt.)  
P: Partial inflammation (70-89 Skt.)

D: Degeneration (< 50 Skt.)

Standard values: (50-70 Skt.)



## Overview of BESA measuring



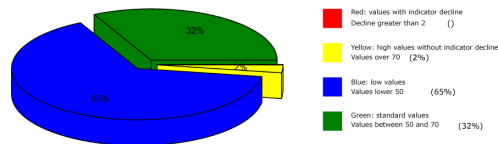
- Red: values with indicator decline  
Decline greater than 2     ( )
- Yellow: high values without indicator decline  
Values over 70     ( )
- Blue: low values  
Values lower 50     ( )
- Green: standard values  
Values between 50 and 70     (100%)



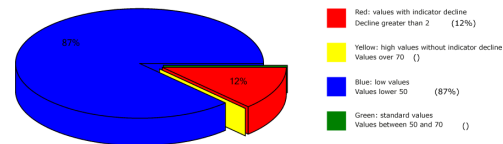
## All BESA tests at a glance

### Proband 1

Overview of BESA measuring

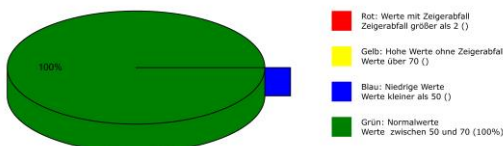


Overview of BESA measuring



### BESA Testing after application of the „Leela Quantum Bloc“

Übersichtsdiagramm der BESA-Messungen:

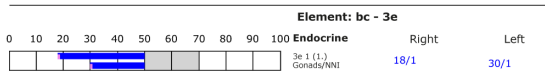


### Proband 2

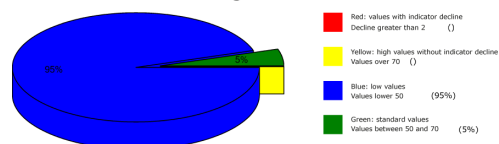
BESA basic test

+++ Indicator decline > 15 Skt. T: Total inflammation (>89 Skt.)  
++ Indicator decline 6-15 Skt. P: Partial inflammation (70-89 Skt.)  
+ Indicator decline 3-5 Skt.

D: Degeneration (< 50 Skt.) Standard values: (50-70 Skt.)



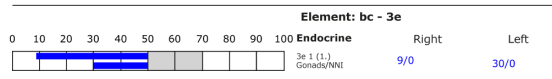
Overview of BESA measuring



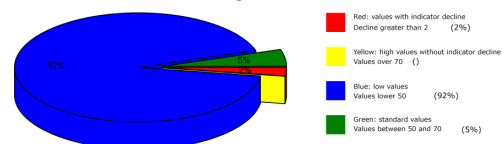
BESA basic test

+++ Indicator decline > 15 Skt. T: Total inflammation (>89 Skt.)  
++ Indicator decline 6-15 Skt. P: Partial inflammation (70-89 Skt.)  
+ Indicator decline 3-5 Skt.

D: Degeneration (< 50 Skt.) Standard values: (50-70 Skt.)

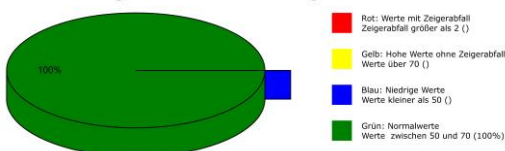


Overview of BESA measuring



### BESA Testing after application of the „Leela Quantum Bloc“

Übersichtsdiagramm der BESA-Messungen:



### BESA Testung nach Anwendung des Testobjektes



## General information about the test result

The human being or all biological objects represent a kind of receiving antenna for environmental information. This is because the life of man and all other biological objects depends fundamentally and exclusively on environmental information. Our organism is biologically very sensitive where natural information (fields) are located or where they are subject to interactions and fluctuations. **For this reason, detected informative electromagnetic interference fields are biologically highly relevant. Any reduction or transformation of these interfering fields (ideally to 100 percent) is biologically very important, often even decisive for life.**

These informational disturbances from our environment are only compatible with life if they can be readjusted to a natural fluctuation tolerance. Disturbances, problems, blockades, disharmonies in the biological control circuit of man find their causes in such disturbing information influences.

**Neutralizing or harmonizing effects could be proven in this detailed project P72 2.0 to determine the effect of the "Leela Quantum Bloc".**

The "Leela Quantum Bloc" was able to neutralize the biologically adverse effects and effects determined on the test person in the project.

**The decisive ability of the "Leela Quantum Bloc" to neutralize and harmonize the life-endangering information or tested stress factors in this detailed project P72 2.0 and to transform them into biological life-promoting goodness is proven with this project.**

## Authorized Summary

The BESA tests carried out by IFVBESA on the energetic and physical effectiveness of the "Leela Quantum Bloc" have clearly shown that it is able to neutralize or harmonize biologically significant stress factors on the energetic system of the test person. By means of the bioenergetic system analysis, the effect of the above-mentioned stress factors on the test person, his meridian system and his energetic-biological control circuits was questioned and systemically tested on the bioenergetic level. The BESA tests BEFORE - AFTER show significant changes at the tested acupuncture points or at the meridian system. The measurement data as well as their key figures impressively confirm on the one hand the stress caused by the tested interference fields on the organism of the test person and on the other hand clarify how after application of the "Leela Quantum Bloc" the deregulating energies are transformed into body-immanent and biocompatible energies. From a holistic point of view, it can be assumed that the positive effect on the test person also occurs in other people.



Internationaler Fachverband für BESA | ZVR Nr. 975047937  
Hauptstraße 1, A 4861 Kammer-Schörfling am Attersee | Österreich - Austria  
Tel.: +43 – 664 – 73152899 | E-Mail: [info@ifvbesa.at](mailto:info@ifvbesa.at)

The fact that the positive influence of the "Leela Quantum Bloc" is actually possible with high precision is clearly shown by the BESA-Before-After comparison. All measured values improved significantly from the mostly 100-percent blue measuring range to the green mostly 50-second range (scale value), i.e. the range of optimal measured values. This means: an optimal regulation dynamic has taken place. Here, in the sense of the IFVBESA, one can clearly speak of an optimal, significant improvement of the body's own energy situation.

**Result:** The test person was brought into contact with heavily loaded frequencies (information) during the BESA-NACHHER testing. In contrast to the BEFORE tests, in which the "Leela Quantum Bloc" was not used, positive measurement results were found throughout, indicating that neutralization or harmonization had taken place. The regulatory dynamics developed into an optimal effective range.

**By proving the bioenergetic effectiveness of the "Leela Quantum Bloc" in this detailed project P72 2.0, the requirements for obtaining a BESA seal of approval from the International Professional Association for BESA were met.**