



IFVBESA

Information is crucial

P72 4.1 BESA-Detailproject
family home - without
Leela Quantum Bloc



Projekt P72 4.1 to BESA expert opinion

bioenergetic System analysis
within the framework of the BESA seal of quality about the impact
in the Family Home
without the "Leela Quantum Bloc" product"
also called "test object" in the project





Internationaler Fachverband für BESA | ZVR Nr. 975047937
Hauptstraße 1, A 4861 Kammer-Schörfling am Attersee | Österreich - Austria
Tel.: +43 – 664 – 73152899 | E-Mail: info@ifvbesa.at

Client

Firma Leela Quantum Tech, LLC
Attn: Eleonora Goldenberg
1421 LUISA STREET, STE G
SANTA FEE, NM 87505
USA

Project participants:

Project leader: Wolfgang Hans Albrecht, präsident and scientific director of the IFVBESA

Test person: Eva Krankl, Vicepräsident and deputy scientific director of the IFVBESA

Respondent: 8 anonymous subject in the (Detail) Projects P72 1.0, P72 2.0, P72 3.0, P72 4.0 as well P72 4.1 and P72 4.2
These break down as follows:

- 1 Respondent at P72 1.0 - New-Snow (chemtrails)
- 2 Respondent at P72 2.0 - Automatic-clocks in the Quantum bloc
- 1 Respondent at P72 3.0 – Sweater at quantum entanglement via quantum-bloc
- 5 Respondents at P72 4.0 - family home + quantum-bloc
- **3 Respondents at P72 4.1 - family home without quantum-bloc**
- 3 Respondents at P72 4.2 - family home + quantum-bloc with quantum entanglement

other participants: none

Project location:

Location of the IFVBESA, Hauptstraße 1, A 4861 Kammer/Schörfling

Date: 27.12.2020 until 07.02.2020

Project duration: 42 Days



Internationaler Fachverband für BESA | ZVR Nr. 975047937
Hauptstraße 1, A 4861 Kammer-Schörfling am Attersee | Österreich - Austria
Tel.: +43 – 664 – 73152899 | E-Mail: info@ifvbesa.at

Table of contents

BESA-legend for interpretation of BESA measurement results	Fehler! Textmarke nicht definiert.
Basics of research project creation P72	Fehler! Textmarke nicht definiert.
Research funding services of IFVBESA - BESA reference tests	Fehler! Textmarke nicht definiert.
Research project description (detailed project)	Fehler! Textmarke nicht definiert.
Test procedure	Fehler! Textmarke nicht definiert.
Overview of all BESA-Tests	Fehler! Textmarke nicht definiert.
General information about the test result	32
Authorized summary	Fehler! Textmarke nicht definiert.

Important notes:

The client owns the right to exploit this project report. Irrespective of this, this report represents intellectual property of IFVBESA as the contractor. The contractor is entitled to use this project report for other purposes if this does not violate the client's data protection or confidentiality. On the other hand, the project report, with the exception of the "authorized abridged version", may not be changed or passed on in abridged form without the consent of the IFVBESA. The order for this project refers to bioenergetically measurable values and their interpretation according to the guidelines of BESA or the IFVBESA. The maintenance of the quality of the tested products as well as their regular control is the task and responsibility of the client. Investigation of the manufacture, mechanism of action or



interpretations of the Client's products to third parties is not the responsibility or task of the Contractor. Video recordings may be made only with the permission of IFVBESA.

BESA-legend for the interpretation of the BESA measurement results

The measured value of 50 on the tested meridian represents an optimal energetic state in this organ or its subordinate and superordinate levels. Also measured values in the range of 50 to max. 70 still count as a neutral and balanced energy status. The organism is able to regulate irritations of the system (wrong environmental signals) very well.

Measured values above 70 to 100 represent the inflammatory range or a so-called energy surplus as a reaction to the irritations of the system by corresponding environmental signals. After reaching the maximum values, the energy state tips into the degenerative (blue) range.

Measured values from below 50 to around 0 represent the so-called degenerative measuring range or a lack of energy as a reaction to the stimulation of the system by corresponding environmental signals.

Measured values represented by a so-called pointer drop of more than 3 scale lines indicate total deregulation. The influence of certain environmental signals then leads to such strong system overloads, which can only be brought into harmonization by corresponding new signals.

BESA key figures:

up to 0,79	very deep energetic regulatory disorder (SSD) energy deficiency
0,8 to 1,19	strong energetic regulation disturbance (SD) degeneration/energy deficiency
1,2 to 1,59	energetic regulation disorder (D) degeneration/energy deficiency
1,6 to 1,99	degenerative transition area (DÜ)
2,0 to 2,39	optimal regulation (OR)
2,4 to 2,79	in the regulation (R)
2,8 to 3,19	partial inflammation = regional energy excess (PE)
from 3,2	total inflammation = strong general energy surplus (TE)



Basics of the research project creation P72

Der internationale Fachverband für bioenergetische Systemanalyse wurde von der Firma Leela Quantum Tech LLC beauftragt, die Wirkung des Testobjektes „Leela Quantum Block“ mittels bioenergetischer Systemanalyse (BESA) zu testen bzw. nachzuweisen. Die Testung fand unabhängig vom subjektiven Empfinden aller Probanden statt.

The international professional association for bioenergetic system analysis was commissioned by the company Leela Quantum Tech LLC to test or prove the effect of the test object "Leela Quantum Bloc" by means of bioenergetic system analysis (BESA). The testing took place independently of the subjective feeling of all test persons.

Description of the "Leela Quantum Bloc" by the client:

"Leela Quantum Bloc" is a quantum space generator and concentrator, which is highly concentrated inside the device between the plates. At the same time, the Quantum Bloc has an energetic extension of more than 100 meters, which however does not represent the concentrated quantum space, but a positive energetic quantum field. This quantum field neutralizes and harmonizes on the one hand negative frequencies and vibrations and on the other hand provides overall positive, inviting and peaceful energy. In the quantum space itself (between the plates), each object that is placed there is energetically restructured, optimized and charged with quantum energy within 60 seconds. It can be said from previous tests that any object that has been in the "Leela Quantum Bloc" becomes "better". Whether that is water, food, jewelry, technical devices, etc. The essential difference of the "Quantum Bloc" to other "quantum energy producing devices" is that the Quantum Bloc works on more than one level of consciousness (and thus on this level one-dimensional, figuratively represented like a flat field). The Quantum Bloc works on more than 50 levels at the same time and is therefore a multidimensional quantum space in every respect. This has the advantage, also among others compared to other devices, that even if the energy is increased, there is no imbalance or negative energetic pressure. This is especially important for users whose organism cannot yet handle such higher energy levels. Furthermore, the "Leela Quantum Bloc" needs only about 30 seconds to transfer a frequency in it from one object to another. We have also been able to observe this in 20 seconds, but officially advise a minute (60 seconds).

The client assumes that the Quantum Bloc can produce the following effects:

- charge any object with comprehensive, positive quantum energy.
- For clarification: energies are always neutral. With "positive" the client wants to refer to the positively affecting energy of the objects in the room such as people, animals, plants, etc.
- copy any frequencies within only 1 minute
- harmonizing energy field for home, workplace, car, etc.



- harmonization of any negative frequencies
- helps to dive deeper into one's own consciousness (whether in meditation, daily life, "retrieving" information, etc.)
- optimizes food, water and all other substances
- positive effect on human cells and body (physical and energetic). For this purpose it is enough just to be in the expanded field of the Quantum Block. If one part of the body is in the concentrated quantum space, automatically not only the cells of this one part of the body, but the cells of the whole body are intensively touched.
- neutralizes unwanted "dark entities" or keeps them away due to the high light vibration or "brings" them into the light
- cleanses the aura
- supports positive affirmations within the framework of legality and also accelerates their manifestation within the framework of legality

Research funding services of the IFVBESA - BESA- reference tests

General information about this project:

The purpose of this detailed project P72 4.1 is to show what happens when the "Leela Quantum Block" is removed from the house again. The BESA tests were performed 2 days after removal of the "Leela Quantum Block". In the P72 4.0 project, the 7-day effect of the "Leela Quantum Block" on the house and its occupants was shown. The BESA testing AFTER showed how the stressful energies both on the house and the residents were transformed into life-enhancing information.

For this project P72 4.1, 3 subjects were selected from the preliminary project P72 4.0. BESA testing was conducted on subject 1 (female house resident) and subject 4 (bunny Paul) as well as on the house itself. In addition, the effect of EMSF (electromagnetic fields) was again tested on the two subjects. These include in this project: W-Lan, Bluetooths, Smartmeter as well as the radiation of mobile phones of the generation 4G and 5G. For test subjects 4 and 5, a so-called surrogate was used, as in project P72 4.0.

What is a surrogate: This is a substitute person who stands in for the respective test subjects. Example: A rabbit has fingers and toes in a different sense than a human. Otherwise it has all organs like the human. In this case, the surrogate takes over the function of the rabbit during BEASA testing.

The client assumes that through the application of the "Leela Quantum Block" the life-enhancing energies in the house can still be measured. This will be tested on the test persons via this BESA project.



Testing was carried out according to the requirements of the client within the framework of the applicable conditions of the IFVBESA for the award of quality seals. Depending on the significance of the test results, seals of approval are awarded in 3 categories, taking into account all tests of a project.

To the general information of the information transfer:

The information transfer takes place from the hyperspace of the test object to the hyperspace of biological objects (humans, animals, plants). From there, the information reaches the reference space or the energy space via so-called interaction channels. This is a union of, among other things, all organs and energy forms in the biological object. There, the information of the program can dynamically materialize and thus change current states. The changes can appear in the form of neutralization or harmonization of disturbances, dissolution of problems, blockages and disharmonies.

Research project description (detailed project)

The reason for the tests is to check to what extent an after-effect of the "Leela Quantum Block" on the building or on the occupants of this building can still be measured 2 days after removal of the "Leela Quantum Block". As in the P72 4.0 project, the test persons are tested for stress and deficiency conditions in the environment of the 2-family house in order to show their reactions without the "Leela Quantum Block".

The question in these BESA tests is: Could the effect of the "Leela Quantum Block" from the past 7 days sustainably charge the building with quantum energy? Is this lingering quantum energetic radiation suitable and able to harmonize or neutralize the thus perceived and possibly negative effects in the environment of the residential building on the organism of the test person?" Information about this should be provided by the appropriately designed tests..

Conditions:

The BESA tests are performed in the premises of IFVBESA under laboratory conditions, at room temperature 20° Celsius, on natural wood floor. The test subjects are deswitcht (made testable) before the BESA tests or the test possibilities are questioned on the respective test subjects. All BESA field tests are performed according to the IFVBESA conditions for field tests.

- Pos.1** BESA Basic tests (bioenergetic status) on all 3 subjects
- Pos.2** BESA tests on 2 test persons + EMSF
- Pos.3** Evaluation of the results in the detailed project as well as summary in the corresponding expert's report according to sample Vorgehensweise und

Procedure and specifications for the execution

1. **BESA- basic measurement** of the 3 test persons at all previously determined measurement points (TING points). This corresponds to the actual condition, so to speak.



The results are determined exactly according to the BESA specifications and documented via the known BESA graphs.

2. the 2 test persons are brought into contact with the EMSF depending on the project, whereby the sequence discussed with the client is considered as a specification and is adhered to accordingly. In order to be able to determine the current energy state, the measuring points mentioned under point 1 are measured in the same order and for the same duration during each test. The results are determined exactly according to the BESA specifications and documented via the BESA graphs.

Test procedure

BESA 1 BASIC testing as status on all test persons

In the first step, a basic bioenergetic test (bioenergetic status) is performed on the meridian end points (TING points) of the test persons.

BESA 2 testing of the 2 test persons and EMSF

In the further BESA testing process, the consequences of the EMSF are tested on the two living subjects. The question is: How does the meridian system react? How does the energetic status change when confronted with the EMSF? What are the differences in each case compared to the BESA 1 BASIC testing?



Test person 1

BESA 1 Testing BASIC

BESA 1 BASIC testing as status on proband 1

Eva Krankl performs a BESA basic test on Subject 1 in the home. All BESA testing is done at the TING points (40 nail fold points on the fingers and toes).

Goal: The creation of a basic test (status) as a representation of the energetic initial situation for all further BESA tests.

BESA Test evaluation P72 4.1
from **23-01-2021 at 12:10 – 12:32** (22 Minutes) page 11 and 12

result: The measurement result indicated energetic stress at the meridian endpoints and subsequently on the subordinate metabolic situation of the test person.

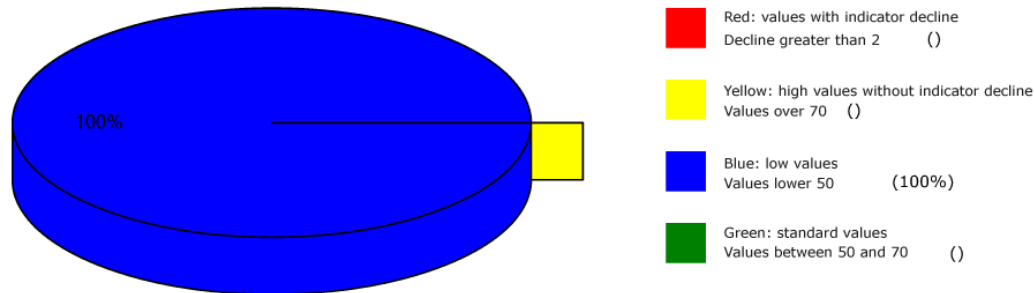
100 % in the blue area

Conclusion: As the BESA graphs and the pie chart show, all BESA measurement results were in the blue, degenerative range (energy deficiency). The BESA measurement results further show that 2 days after removal of the "Leela Quantum Block", the life-enhancing effect as seen with the P72 4.0 project is absent. The test person also shows how important it is to positively influence one's own environment bioenergetically (bioinformatively).

To be noted: This BESA test shows itself, generally speaking, somewhat better than the comparable BESA test from the P72 4.0 project.



Overview of BESA measuring



BESA basic test

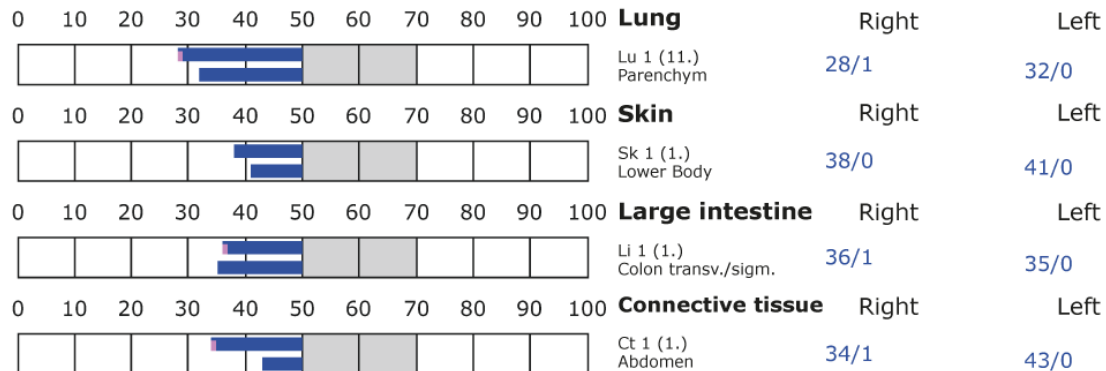
+++ : Indicator decline > 15 Skt.
++ : Indicator decline 6-15 Skt.
+ : Indicator decline 3-5 Skt.

T: Total inflammation (>89 Skt.)
P: Partial inflammation (70-89 Skt.)

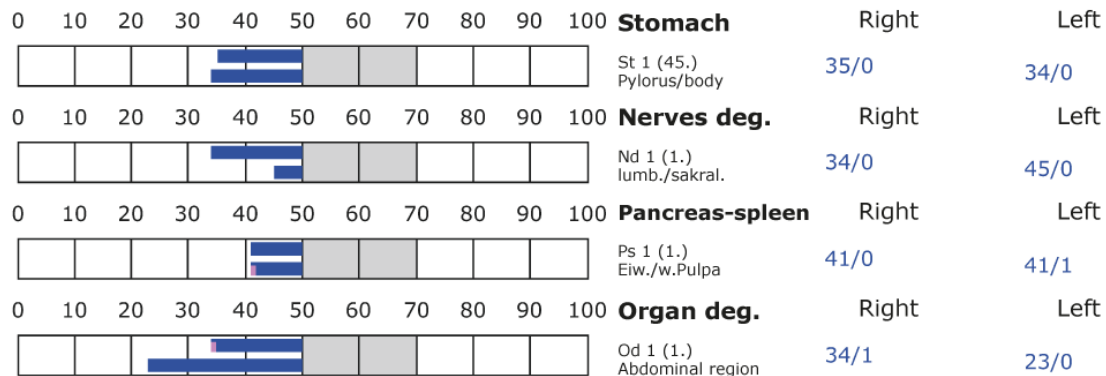
D: Degeneration (< 50 Skt.)

Standard values: (50-70 Skt.)

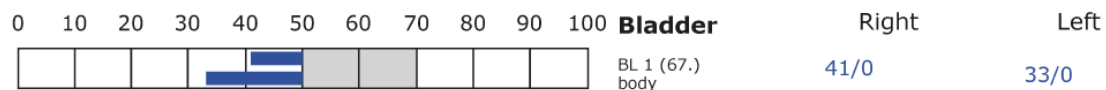
Element: lu - sk - li - ct



Element: st - nd - ps - od



Element: bl - ly - ki - al





BESA basic test

+++ : Indicator decline > 15 Skt.
++ : Indicator decline 6-15 Skt.
+ : Indicator decline 3-5 Skt.

T: Total inflammation (>89 Skt.)
P: Partial inflammation (70-89 Skt.)

D: Degeneration (< 50 Skt.)

Standard values: (50-70 Skt.)

Element: bl - ly - ki - al										
0	10	20	30	40	50	60	70	80	90	100
Lymph										
Ly 1 (1.) Tons.Palat.										
27/1										
36/0										
0	10	20	30	40	50	60	70	80	90	100
Kidney										
Ki 1 (11.) pelvis										
44/0										
35/1										
0	10	20	30	40	50	60	70	80	90	100
Allergy										
Al 1 (1.) Lower body										
34/1										
37/0										
Element: ga - jd - li - gd										
0	10	20	30	40	50	60	70	80	90	100
Gall										
Ga 1 (44.) Duct.choled./hep.										
38/0										
37/1										
0	10	20	30	40	50	60	70	80	90	100
Joint deg.										
Jd 1 (1.) lower extremities										
28/0										
33/1										
0	10	20	30	40	50	60	70	80	90	100
Liver										
Li 1 (1.) Central veins										
27/0										
33/1										
0	10	20	30	40	50	60	70	80	90	100
Greasy deg.										
Gd 1 (1.) Abdomen										
39/0										
45/0										
Element: he - si										
0	10	20	30	40	50	60	70	80	90	100
Heart										
He 1 (9.) Pulm.sm./Aortic valves										
28/1										
34/0										
0	10	20	30	40	50	60	70	80	90	100
Small intestine										
Si 1 (1.) Ileum										
33/1										
29/1										
Element: bc - 3e										
0	10	20	30	40	50	60	70	80	90	100
Blood circulation										
Bc 1 (9.) SMP Arteries										
34/0										
24/0										
0	10	20	30	40	50	60	70	80	90	100
Endocrine										
3e 1 (1.) Gonads/NNI										
28/1										
34/0										



BESA 2 Testing

BESA 2 Testing - Proband + EMSF

In the further course of the BESA test, the EMSF are tested on test person 1. For this purpose, W-Lan, smart meter, cell phone of generation 4G and 5G are introduced into the measurement circuit. In addition, a connected cell phone is placed on the left thigh of the test person. Thus, it is actively in the BESA measurement circuit.

Goal: To determine the response of the subject's meridian system within these strong EMSF sources. Determination of the differences compared to the BESA 1 test Basic BEFORE.

BESA Test evaluation P72 4.1

from **23-01-2021 at 12:45 – 12:53** (8 Minutes) page 14 and 15

result: The measurement result indicated heavy energetic stresses at the meridian endpoints and subsequently on the subordinate metabolic situation of the test person.

90 % in the blue area

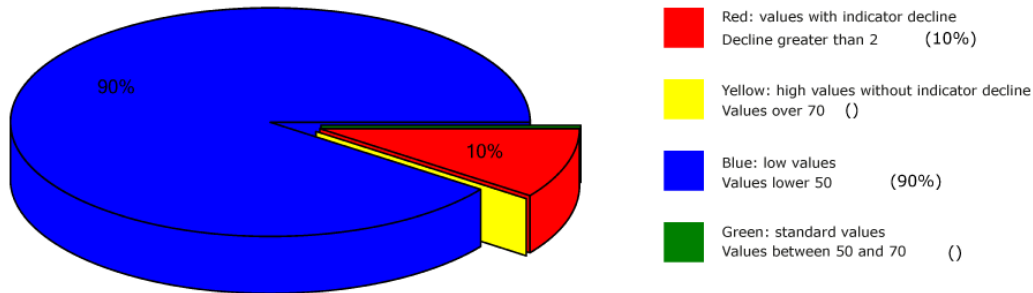
10 % in the red area

Conclusion: As the BESA graphs show, many measuring points are in the degenerative blue area (energy deficiency). However, the picture is dramatic due to the now many measurement points in the red area. The BESA test thus results in a significant deterioration of the subject's energetic situation compared to the BESA 1 test Basic BEFORE. The red readings represent a total deregulation of these energy areas. This means that the energy system of the organism would seriously damage the test person in case of permanent influences of such or similar interference fields. For a balancing of these red readings or in other words: for a harmonization of the values, the energy system needs a strong positive impulse from outside. The comparisons of the BESA graphs confirm the change and the stressful influences of the EMSF on the test person.

To be noted: This BESA test generally shows slightly better than the comparable BESA test from the P72 4.0 project.



Overview of BESA measuring



BESA basic test

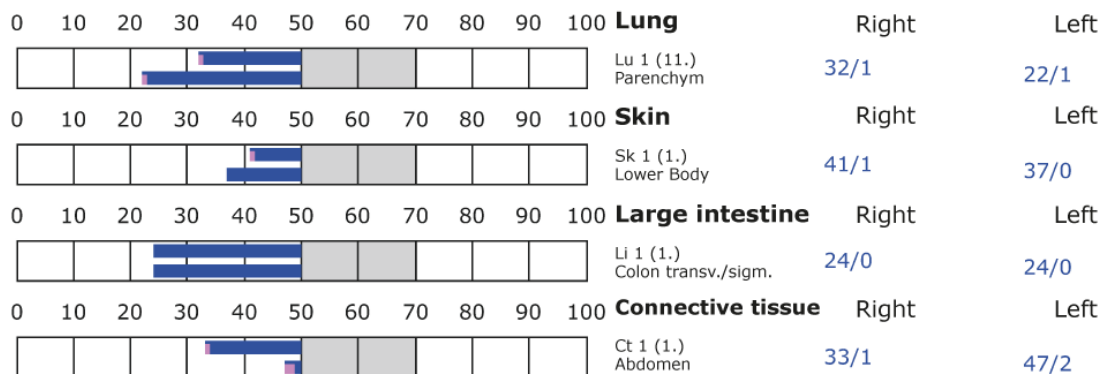
+++ : Indicator decline > 15 Skt.
++ : Indicator decline 6-15 Skt.
+ : Indicator decline 3-5 Skt.

T: Total inflammation (>89 Skt.)
P: Partial inflammation (70-89 Skt.)

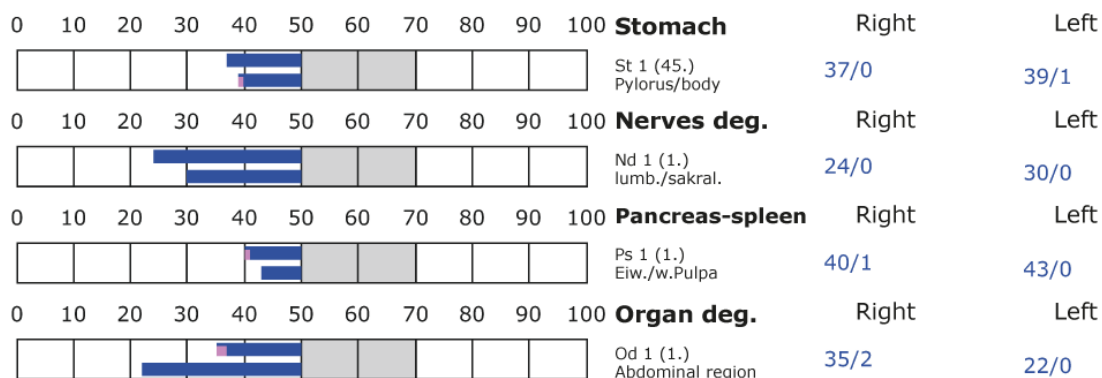
D: Degeneration (< 50 Skt.)

Standard values: (50-70 Skt.)

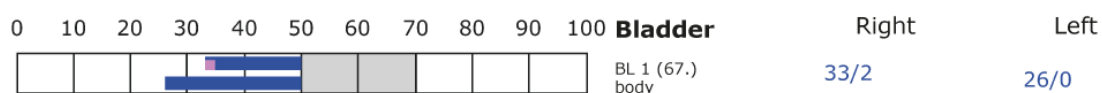
Element: lu - sk - li - ct



Element: st - nd - ps - od



Element: bl - ly - ki - al





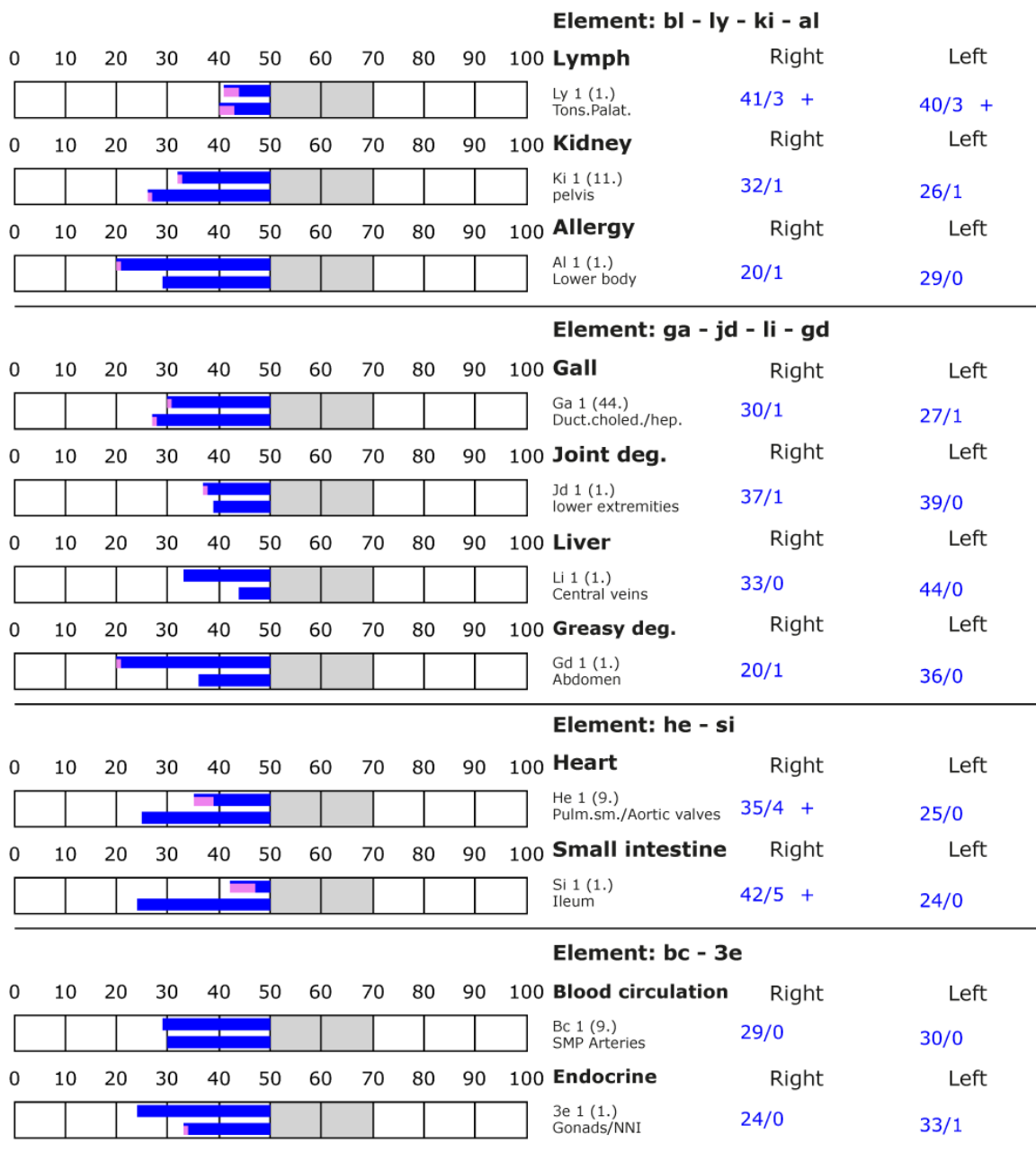
BESA basic test

+++ Indicator decline > 15 Skt.
++ Indicator decline 6-15 Skt.
+ Indicator decline 3-5 Skt.

T: Total inflammation (>89 Skt.)
P: Partial inflammation (70-89 Skt.)

D: Degeneration (< 50 Skt.)

Standard values: (50-70 Skt.)





Proband 2

BESA 1 Testing BASIC

BESA 1 BASIC Testing as status on test person 2 (Rabbit Paul)

Eva Krankl performs a basic BESA measurement on test person 2 (Paul the rabbit) in the house. All BESA tests are performed at the TING points (40 nail fold points on the fingers and toes).

Goal: The creation of a basic test (status) as a representation of the energetic initial situation for all further BESA tests.

BESA Test evaluation P72 4.1

from **23-01-2021 at 12:32 – 12:38** (6 Minutes) page 17 and 18

result: The measurement result indicated energetic stress at the meridian endpoints and subsequently on the subordinate metabolic situation of the test person.

87 % in the blue area

2 % in the red area

10 % in the green area

1 % in the yellow transition area

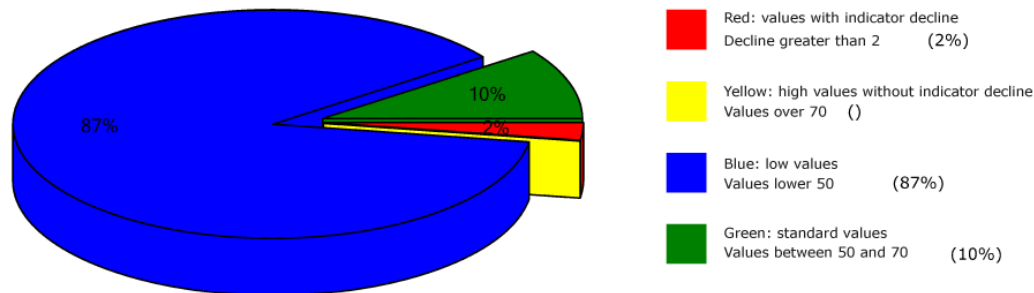
Conclusion: As the BESA graphs and pie chart show, only 87% of the BESA measurement results were in the blue range, 2% in the red range and thus degenerative range (energy deficiency).

The BESA measurement results further show that 2 days after removal of the "Leela Quantum Block", the life-enhancing effect as compared to the project P72 4.0 was evident (hare was subject 4), without the influence of the "Leela Quantum Block" has diminished.

To be noted: This BESA test generally shows slightly better than the comparable BESA test from project P72 4.0.



Overview of BESA measuring



BESA basic test

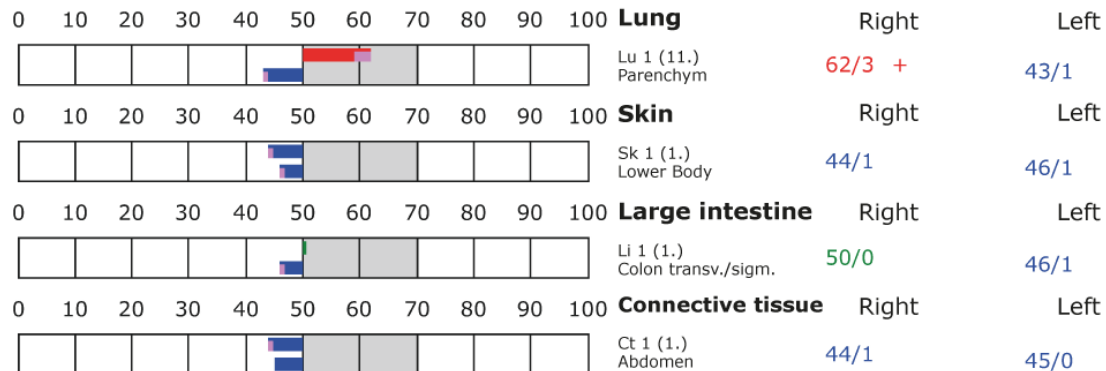
+++ : Indicator decline > 15 Skt.
++ : Indicator decline 6-15 Skt.
+ : Indicator decline 3-5 Skt.

T: Total inflammation (>89 Skt.)
P: Partial inflammation (70-89 Skt.)

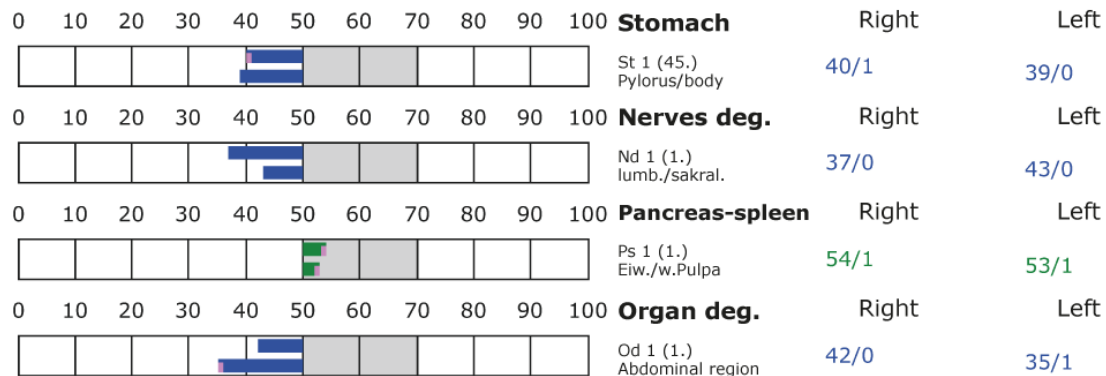
D: Degeneration (< 50 Skt.)

Standard values: (50-70 Skt.)

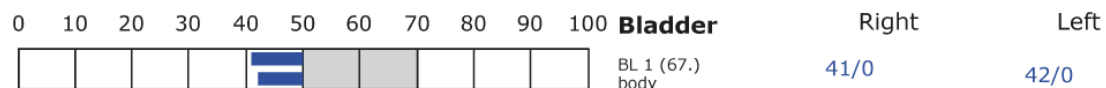
Element: lu - sk - li - ct



Element: st - nd - ps - od



Element: bl - ly - ki - al





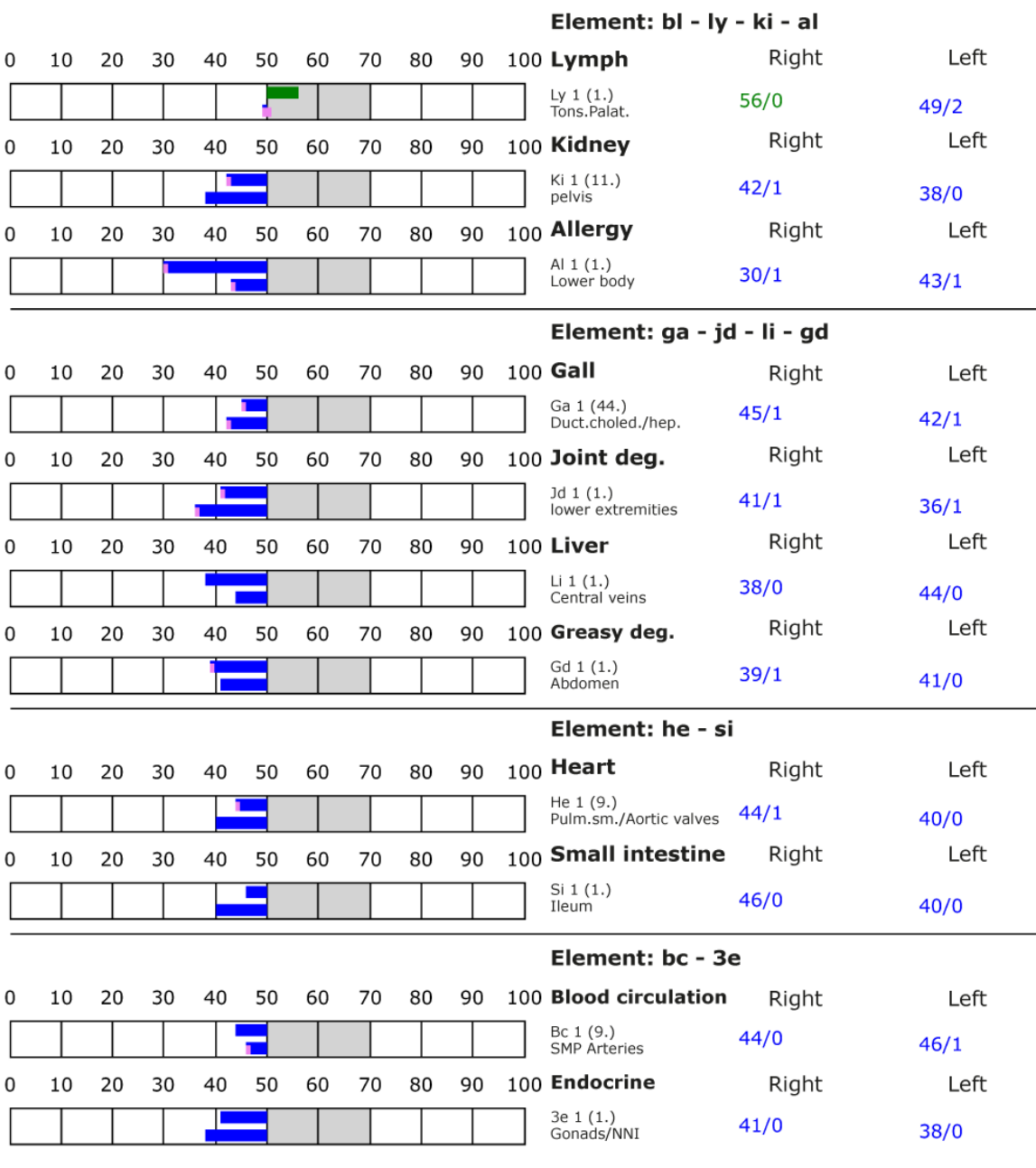
BESA basic test

+++ : Indicator decline > 15 Skt.
++ : Indicator decline 6-15 Skt.
+ : Indicator decline 3-5 Skt.

T: Total inflammation (>89 Skt.)
P: Partial inflammation (70-89 Skt.)

D: Degeneration (< 50 Skt.)

Standard values: (50-70 Skt.)





BESA 2 Testing

BESA 2 Testing - Proband (Rabbit Paul) + EMSF

The rest of the BESA test procedure involves BESA testing of EMSF on subject 2, whereby wi-fi, smart meter, Bluetooths, cell phone of generation 4G and 5G are introduced into the measurement circuit. In addition, a connected cell phone is placed in the immediate vicinity of the test subject (Hare Paul). Thus, it is actively in the BESA measurement circuit of the hare.

Goal: To determine the response of the subject's meridian system within these strong EMSF sources. To determine the differences compared to the BESA 1 test Basic BEFORE.

BESA Test evaluation P72 4.1

from **23-01-2021 at 12:55 – 13:00** (5 Minutes) page 20 and 21

result: The measurement result indicated heavy energetic stresses at the meridian endpoints and subsequently on the subordinate metabolic situation of the test person.

87 % in the blue area

12 % in the green area

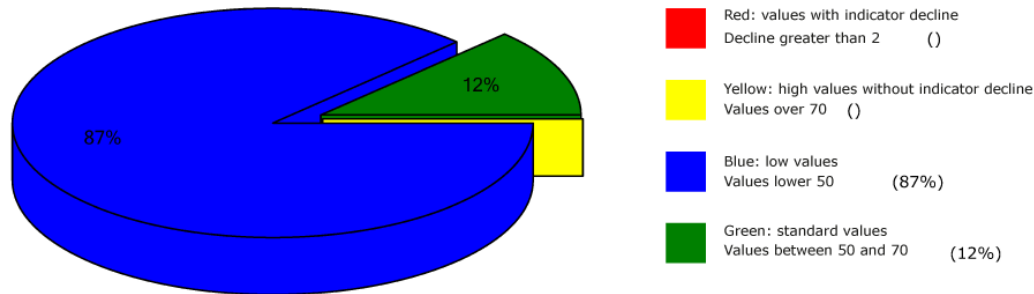
1 % in the yellow transition area

Colclution: As the BESA graphs show, many measurement points are located in the degenerative blue area (energy deficiency). However, the picture is interesting because of the now strong increase of the measured values in the green area. It can be seen that the EMSF show their effect, but by far weaker than compared to the BESA test from the project P72 4.0. Comparisons of the BESA graphs confirm the change in the stressful influences on the test person.

To be noted: This BESA testing shows generally better than the comparable BESA testing from project P72 4.0 (in this project the hare was subject 4). However, this situation confirms once again that EMSFs also have a harmful influence on animals and weaken the bioenergetic field.



Overview of BESA measuring



BESA basic test

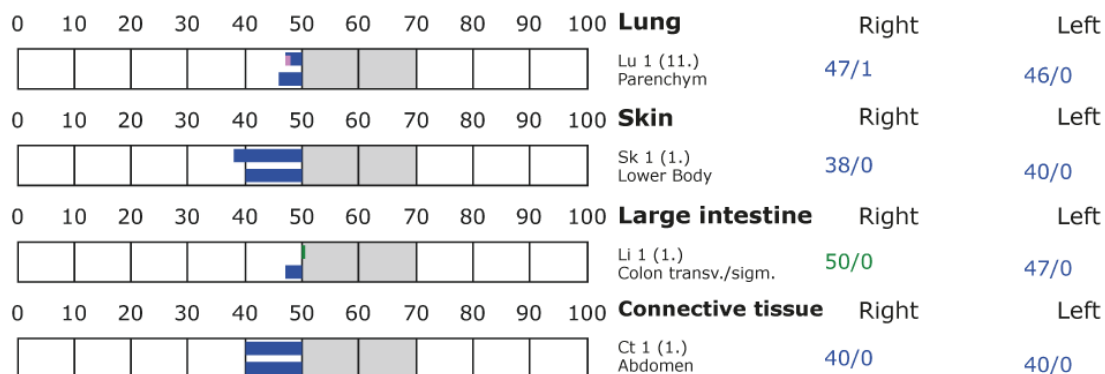
+++ : Indicator decline > 15 Skt.
++ : Indicator decline 6-15 Skt.
+ : Indicator decline 3-5 Skt.

T: Total inflammation (>89 Skt.)
P: Partial inflammation (70-89 Skt.)

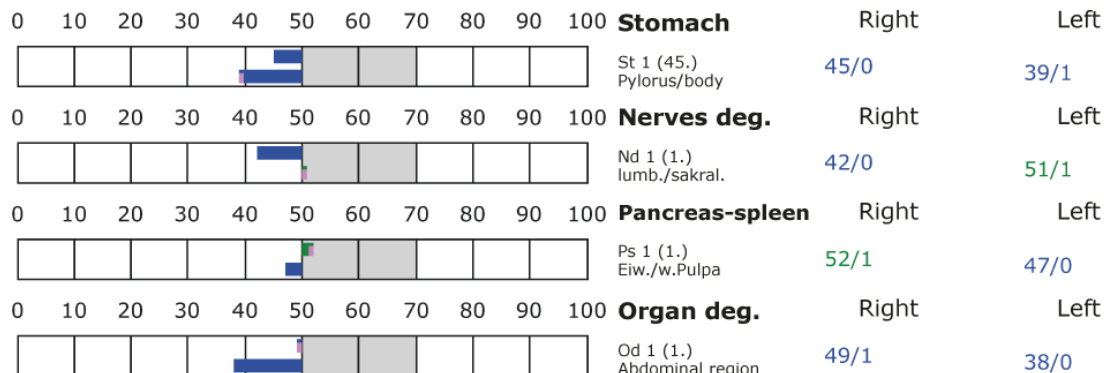
D: Degeneration (< 50 Skt.)

Standard values: (50-70 Skt.)

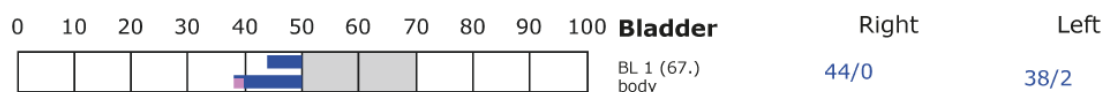
Element: lu - sk - li - ct



Element: st - nd - ps - od



Element: bl - ly - ki - al





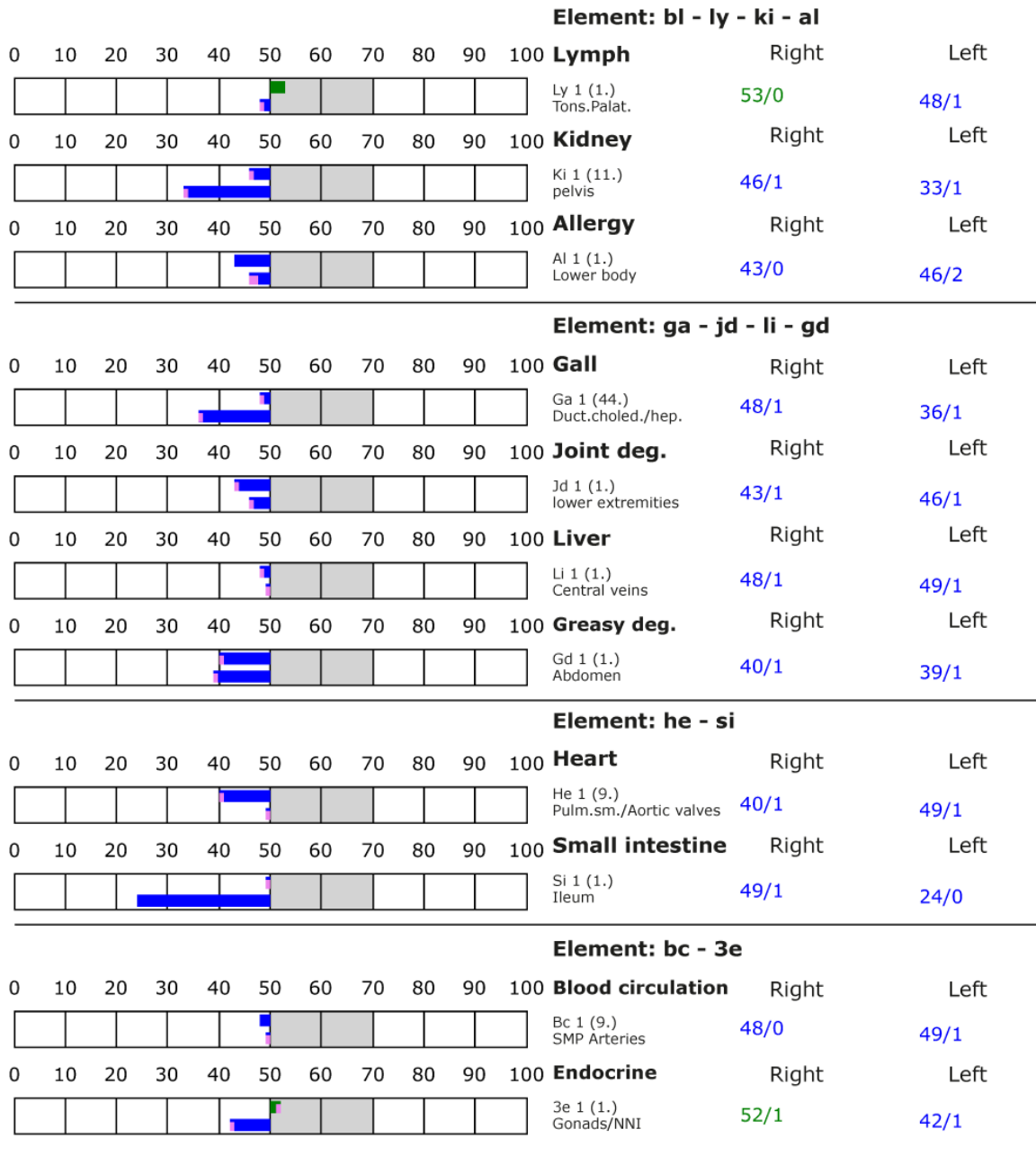
BESA basic test

+++ : Indicator decline > 15 Skt.
++ : Indicator decline 6-15 Skt.
+ : Indicator decline 3-5 Skt.

T: Total inflammation (>89 Skt.)
P: Partial inflammation (70-89 Skt.)

D: Degeneration (< 50 Skt.)

Standard values: (50-70 Skt.)





Proband 3

BESA 1 Testing

BESA 1 BASIC testing as status at the 2-family house

Eva Krankl carries out a BESA basic test in the house to question the bioenergetic general status of the house 2 days after the removal of the "Leela Quantum Block". All BESA testing is done at the TING points (40 nail fold points on the fingers and toes), with Ms. Eva Krankl standing in as a surrogate for the house.

Goal: The creation of a basic test (status) as a representation of the energetic initial situation for all further BESA tests of the house.

BESA Test evaluation P72 4.1

from **23-01-2021 at 12:38 – 12:44** (6 Minutes) page 23 and 24

result: The measurement result an almost balanced energetic situation at the meridian endpoints of the testing person Eva Krankl as a surrogate (replacement) for the house.

50 % in the blue area

50 % in the green area

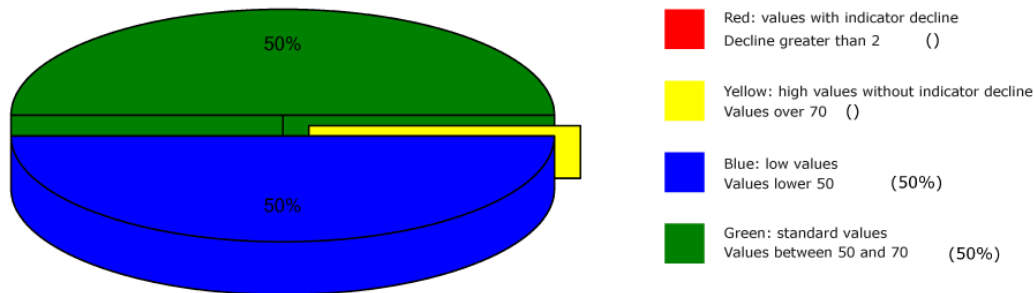
Conclusion: As the BESA graphs and pie chart show, half of all BESA measurement results were in the blue (degenerative range - lack of energy), the other half in the green range (optimal energy).

Important:

1. it should be noted that the degenerative measurement results were just barely in the blue range.
2. based on this BESA test, it can be assumed that the house seems to be able to store the quantum energy emitted by the "Leela Quantum Block".
3. It can be said that after 2 days without the "Leela Quantum Block", it still stored almost all of the charged energy.
4. It appears that the people and animals living in the house benefit from the stored energy of the house and are energetically charged again, which is evident from the consistently better measurement results.



Overview of BESA measuring



BESA basic test

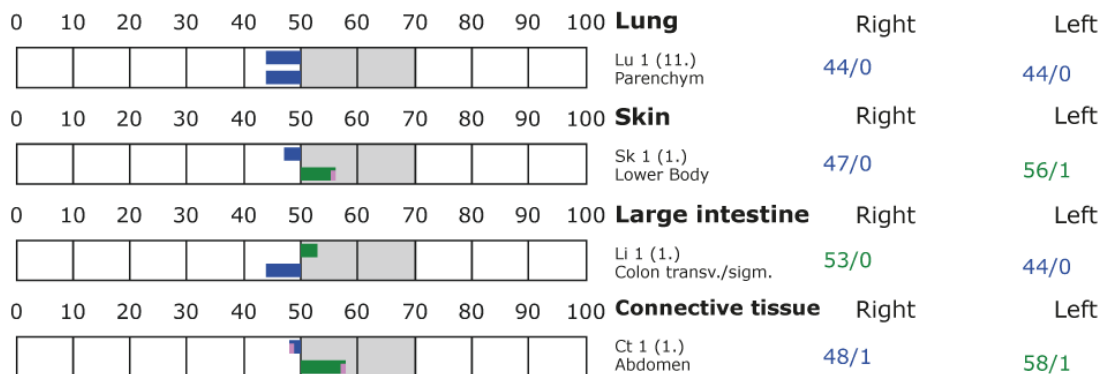
+++ : Indicator decline > 15 Skt.
++ : Indicator decline 6-15 Skt.
+ : Indicator decline 3-5 Skt.

T: Total inflammation (>89 Skt.)
P: Partial inflammation (70-89 Skt.)

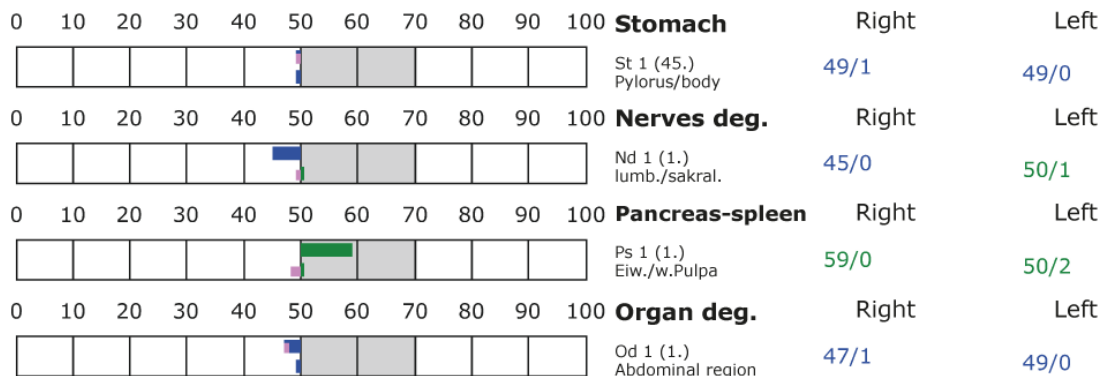
D: Degeneration (< 50 Skt.)

Standard values: (50-70 Skt.)

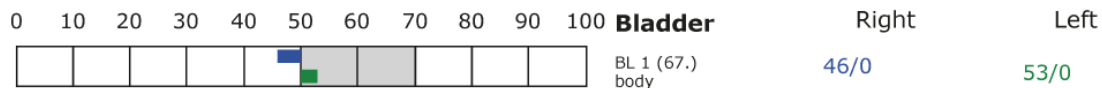
Element: lu - sk - li - ct



Element: st - nd - ps - od



Element: bl - ly - ki - al





BESA basic test

+++ Indicator decline > 15 Skt.
++ Indicator decline 6-15 Skt.
+ Indicator decline 3-5 Skt.

T: Total inflammation (>89 Skt.)
P: Partial inflammation (70-89 Skt.)

D: Degeneration (< 50 Skt.)

Standard values: (50-70 Skt.)

Element: bl - ly - ki - al										
0	10	20	30	40	50	60	70	80	90	100



Proband 1

BESA 1 Testing at 5 o'clock in the morning

BESA 1 BASIC Testing on test person 1 at 5 o'clock in the morning

Eva Krankl performs a BESA test on test person 1 in order to question the general bioenergetic condition at this time. All BESA tests are performed at the TING points (40 nail fold points on the fingers and toes).

Goal: To create a BESA test to show the energetic receptivity of subject 1 through the house. Comparison to BESA 1 BASIC and BESA 2 BEFORE from the project P72 4.0.

BESA Test evaluation P72 4.1

from **23-01-2021 at 05:00 – 05:05** (5 Minutes) page 26 and 27

result: The measurement result indicates a slightly degenerative energetic situation at the meridian endpoints of the test person and his energetic system.

57 % in the blue area

42 % in the green area

1 % in the yellow transition area

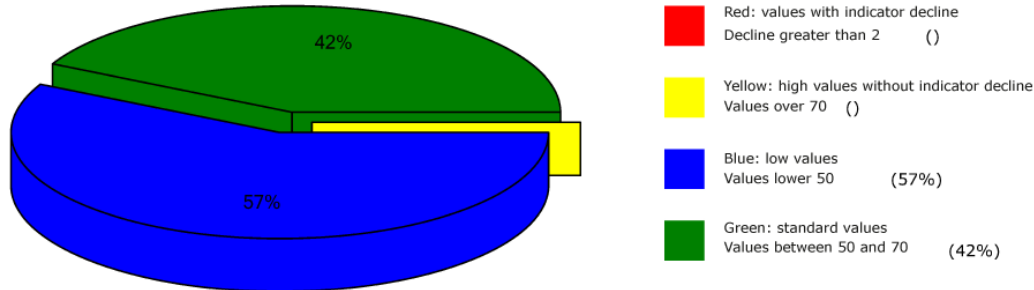
Conclusion: As the BESA graphs and the pie chart show, only 57% of the BESA readings were in the blue (degenerative area - lack of energy). 47% even show up in the green range, i.e. within the optimal measured values.

Important:

1. as the BESA graphs show, the degenerative measurement results are far better than those from the pre-tests of this project. No red readings, no deep blue readings. Almost all measured values were in the green range or very close to it. Here we can clearly speak of a very good measurement result.
2. it appears that test person 1 is able to absorb energy through the house 2 days after removal of the "Leela Quantum Block", i.e. to regenerate better.
3. in any case, it should be noted that test person 1 might be able to deal better with the EMSF during sleep even without the energetically charged house.



Overview of BESA measuring



BESA basic test

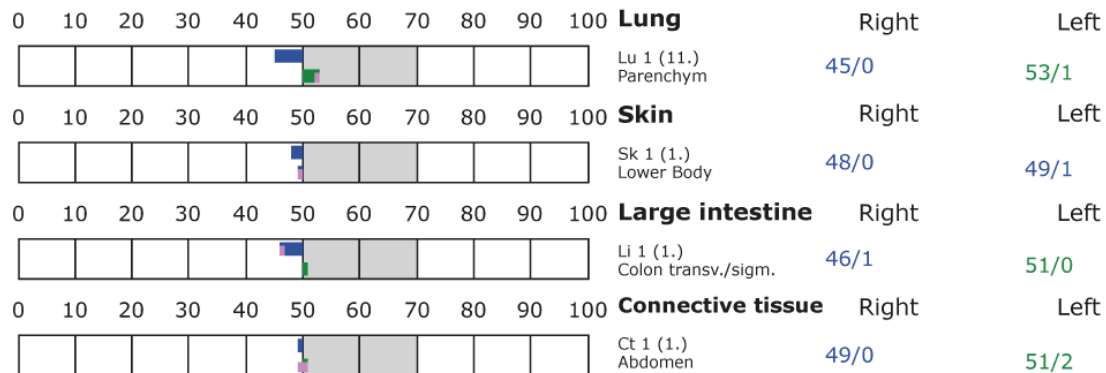
+++ : Indicator decline > 15 Skt.
++ : Indicator decline 6-15 Skt.
+ : Indicator decline 3-5 Skt.

T: Total inflammation (>89 Skt.)
P: Partial inflammation (70-89 Skt.)

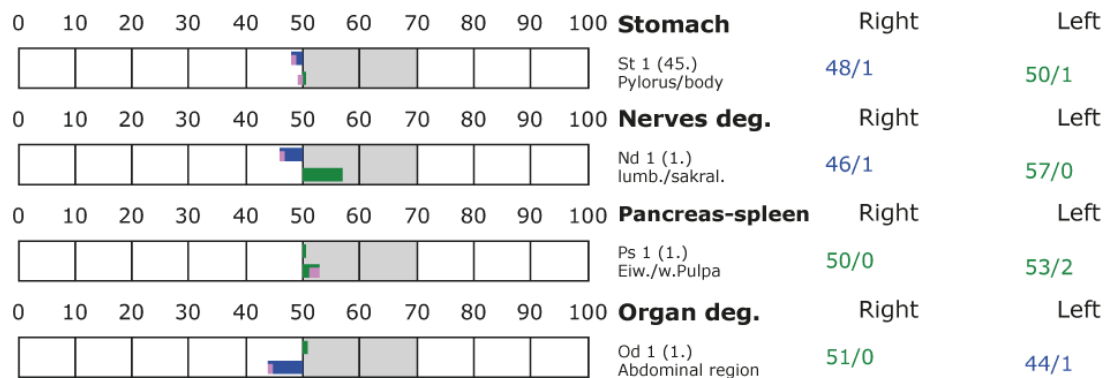
D: Degeneration (< 50 Skt.)

Standard values: (50-70 Skt.)

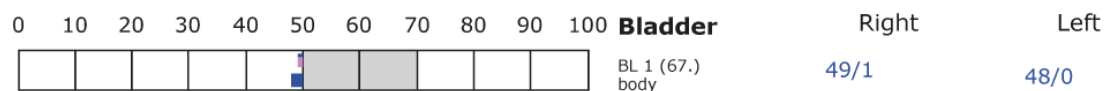
Element: lu - sk - li - ct



Element: st - nd - ps - od



Element: bl - ly - ki - al





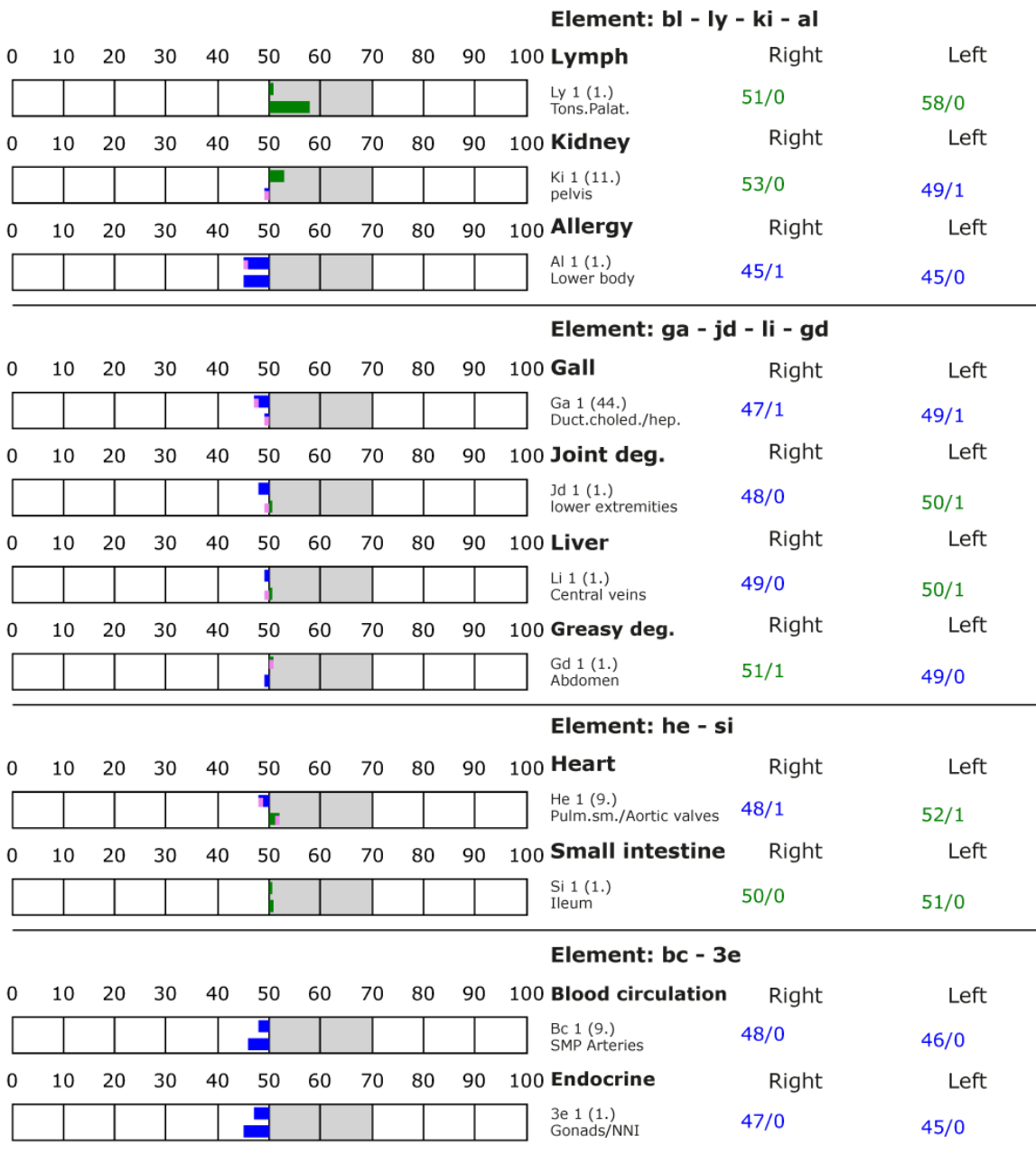
BESA basic test

+++ : Indicator decline > 15 Skt.
++ : Indicator decline 6-15 Skt.
+ : Indicator decline 3-5 Skt.

T: Total inflammation (>89 Skt.)
P: Partial inflammation (70-89 Skt.)

D: Degeneration (< 50 Skt.)

Standard values: (50-70 Skt.)





Proband 1

BESA 1 Testing at 5 o'clock in the morning + EMSF

BESA 1 BASIC Testing on Subject 1 at 5 o'clock in the morning + EMSF

Now subject 1 is confronted with the same EMSF as from project P72 4.0. These are WLAN, smart meter as well as a mobile connection of generation 4G and 5G. Eva Krankl performs BESA testing on the test subject. All BESA tests are performed on the TING points (40 nail fold points on the fingers and toes).

Goal: Based on the positive measurement results of the pre-test, it should now be questioned how the organism of test person 1 can deal with EMSF in the early morning after waking up. The creation of a BESA test evaluation to show the energetic receptivity of the proband through the house with simultaneously activated EMSF.

BESA Test evaluation P72 4.1

from **23-01-2021 at 05:10 – 05:19** (9 Minutes) page 29 and 30

result: The measurement result indicates a slightly degenerative energetic situation at the meridian endpoints of the subject and his energetic system.

100 % in the blue area

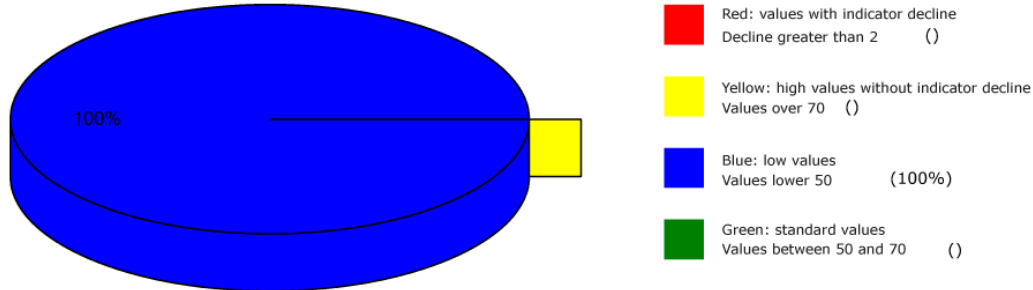
Conclusion: As the BESA graphs and pie chart show, all BESA measurement results were in the blue (degenerative area - lack of energy).

Important:

1. as the BESA graphs show, the degenerative measurement results are far better than those from the pre-tests of this project as well as those from the P72 4.0 project. No red readings, no deep blue readings.
2. it seems that the subject is able to transform the EMSF better 2 days after the removal of the "Leela Quantum Block" by the emitted energy of the house!
3. in any case, it should be noted that test person 1 might be able to deal better with the EMSF during sleep even without the energetically charged house.



Overview of BESA measuring



BESA basic test

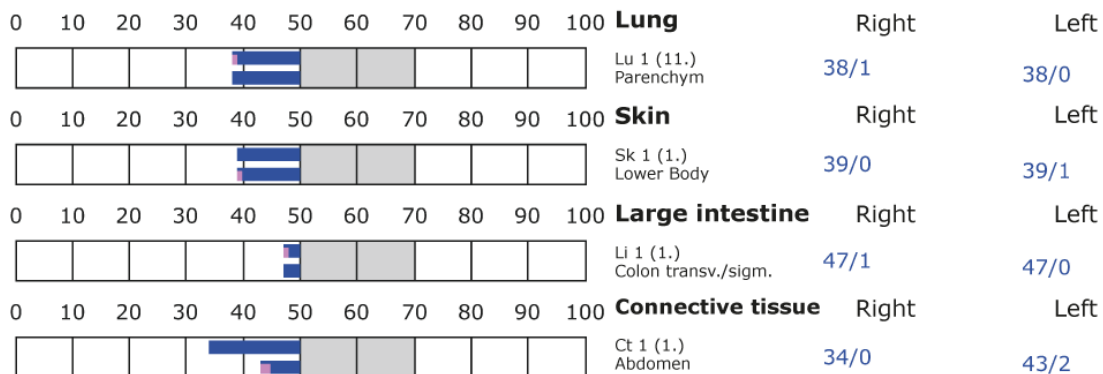
+++ : Indicator decline > 15 Skt.
++ : Indicator decline 6-15 Skt.
+ : Indicator decline 3-5 Skt.

T: Total inflammation (>89 Skt.)
P: Partial inflammation (70-89 Skt.)

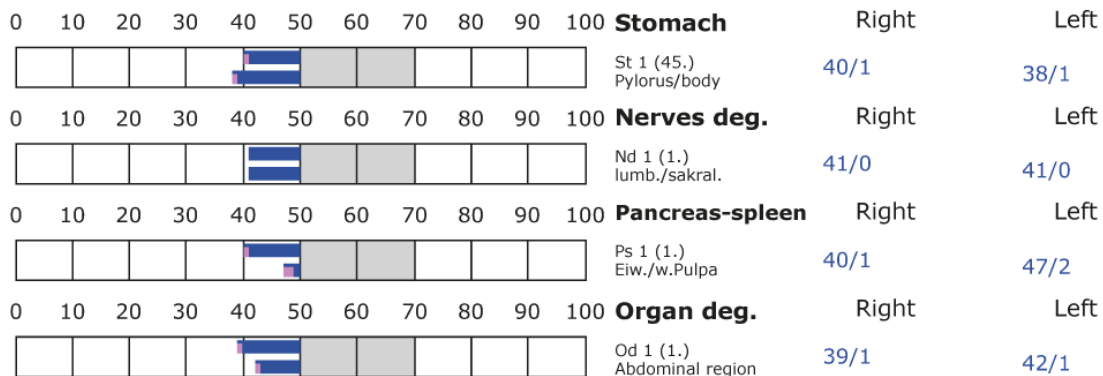
D: Degeneration (< 50 Skt.)

Standard values: (50-70 Skt.)

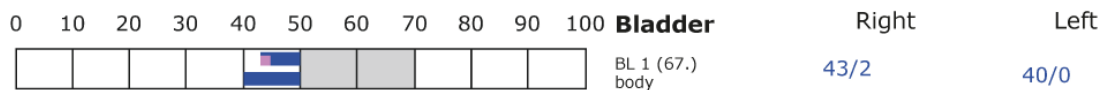
Element: lu - sk - li - ct



Element: st - nd - ps - od



Element: bl - ly - ki - al





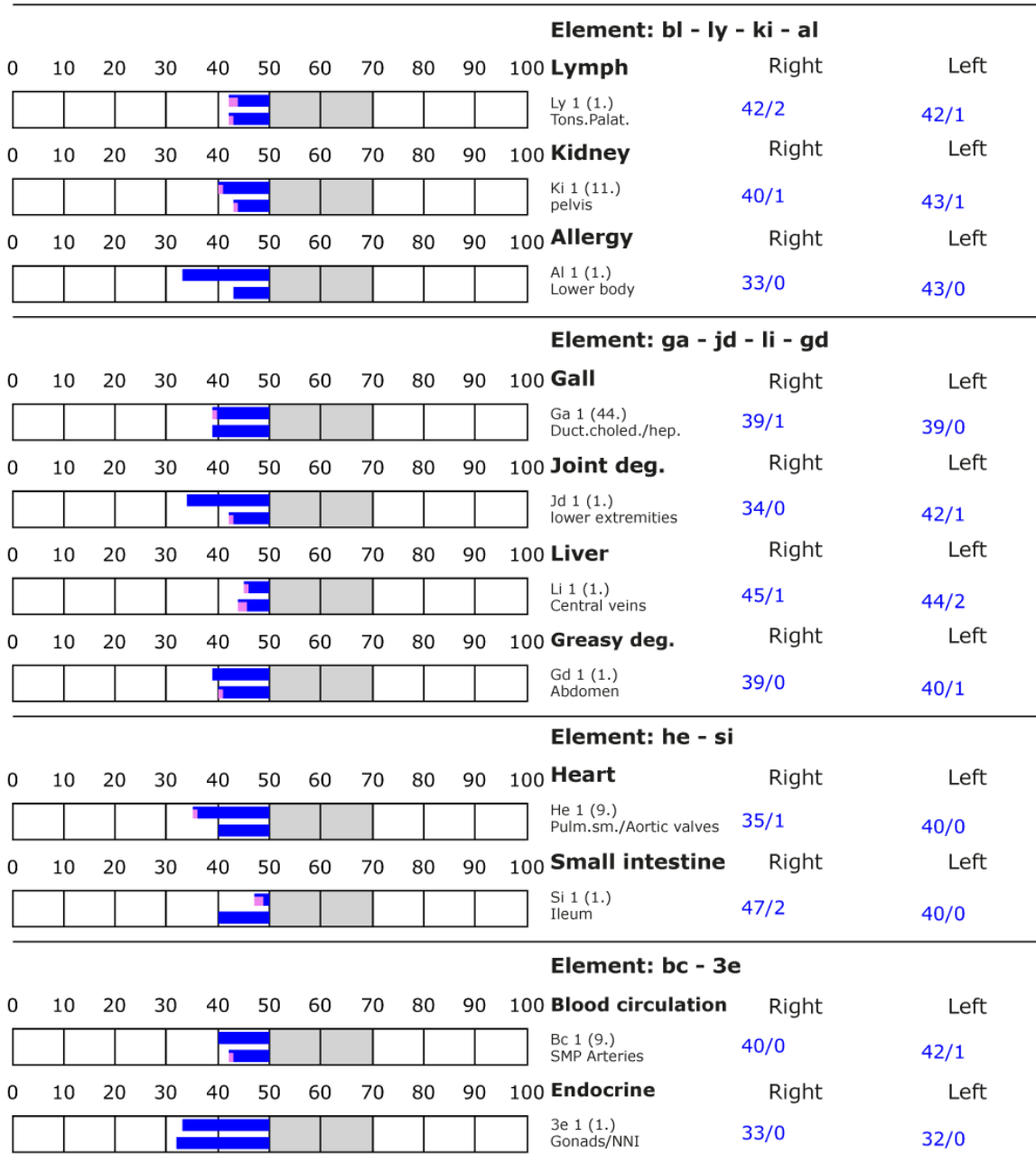
BESA basic test

+++ : Indicator decline > 15 Skt.
++ : Indicator decline 6-15 Skt.
+ : Indicator decline 3-5 Skt.

T: Total inflammation (>89 Skt.)
P: Partial inflammation (70-89 Skt.)

D: Degeneration (< 50 Skt.)

Standard values: (50-70 Skt.)



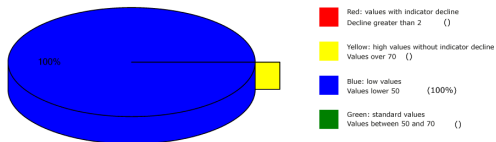


Alle BESA-Testungen im Überblick

Proband 1

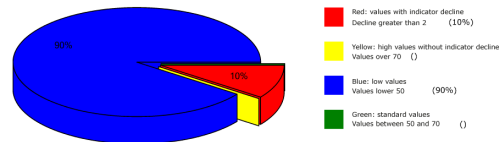
BESA as a status testing on the test subject 1

Overview of BESA measuring



BESA testing after activation with EMSF

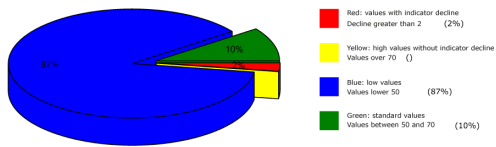
Overview of BESA measuring



Proband 2

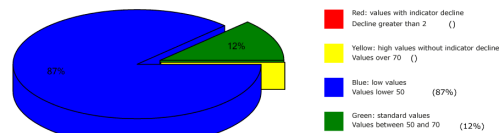
BESA as a status testing on the test subject Rabbit

Overview of BESA measuring



BESA testing after activation with EMSF

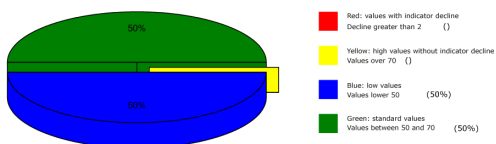
Overview of BESA measuring



Proband 3

BESA as a status testing on 2-Family home

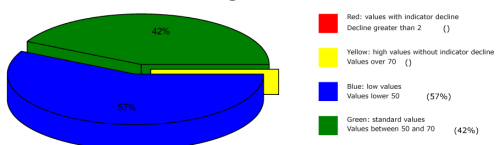
Overview of BESA measuring



Proband 4

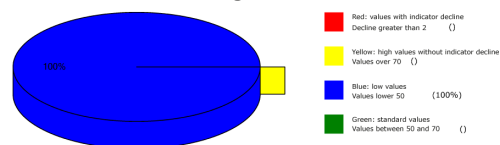
BESA Testing at 5 o'clock in the Morning

Overview of BESA measuring



BESA Testing at 5 o'clock in the Morning + EMSF

Overview of BESA measuring





General information about the test result

The human being or all biological objects represent a kind of receiving antenna for environmental information. This is because the life of man and all other biological objects depends fundamentally and exclusively on environmental information. Our organism is biologically very sensitive where natural information (fields) are located or where they are subject to interactions and fluctuations. **For this reason, detected informative electromagnetic interference fields are biologically highly relevant. Any reduction or transformation of these interfering fields (ideally to 100 percent) is biologically very important, often even decisive for life.**

These informational disturbances from our environment are only compatible with life if they can be readjusted to a natural fluctuation tolerance. Disturbances, problems, blockades, disharmonies in the biological control circuit of man find their causes in such disturbing information influences.

Neutralizing or harmonizing effects could be proven in this detailed project P72 4.1 to determine the effect of the "Leela Quantum Bloc".

The "Leela Quantum Bloc" was able to neutralize the biologically adverse effects and effects determined on the test person in the project.

The decisive ability of the "Leela Quantum Bloc" to neutralize and harmonize the life-endangering information or tested stress factors in this detailed project P72 4.1 and to transform them into biological life-promoting goodness is proven with this project.

Authorized Summary

The BESA tests carried out by IFVBESA on the energetic and physical effectiveness of the "Leela Quantum Bloc" have clearly shown that it is able to neutralize or harmonize biologically significant stress factors on the energetic system of the test person. By means of the bioenergetic system analysis, the effect of the above-mentioned stress factors on the test person, his meridian system and his energetic-biological control circuits was questioned and systemically tested on the bioenergetic level. The BESA tests BEFORE - AFTER show significant changes at the tested acupuncture points or at the meridian system. The measurement data as well as their key figures impressively confirm on the one hand the stress caused by the tested interference fields on the organism of the test person and on the other hand clarify how after application of the "Leela Quantum Bloc" the deregulating energies are transformed into body-immanent and biocompatible energies. From a holistic point of view, it can be assumed that the positive effect on the test person also occurs in other people.



The fact that the positive influence of the "Leela Quantum Bloc" is actually possible with high precision is clearly shown by the BESA-Before-After comparison. All measured values improved significantly from the mostly 100-percent blue measuring range to the green mostly 50-second range (scale value), i.e. the range of optimal measured values. This means: an optimal regulation dynamic has taken place. Here, in the sense of the IFVBESA, one can clearly speak of an optimal, significant improvement of the body's own energy situation.

Result: The test person was brought into contact with heavily loaded frequencies (information) during the BESA-NACHHER testing. In contrast to the BEFORE tests, in which the "Leela Quantum Bloc" was not used, positive measurement results were found throughout, indicating that neutralization or harmonization had taken place. The regulatory dynamics developed into an optimal effective range.

By proving the bioenergetic effectiveness of the "Leela Quantum Bloc" in this detailed project P72 4.1, the requirements for obtaining a BESA seal of approval from the International Professional Association for BESA were met.