



IFVBESA

Information is crucial

P71 4.1 BESA-Detailproject

Human Deregulations

Long-term project - imprints

Leela Quantum H.E.A.L.-Capsule



Internationaler Fachverband für BESA | ZVR Nr. 975047937
Hauptstraße 1, A 4861 Kammer-Schörfling am Attersee | Österreich - Austria
Tel.: +43 – 664 – 73152899 | E-Mail: info@ifvbesa.at

Project P71 4.1 to BESA-expert opinion

Bioenergetic System analysis
within the framework of the BESA seal of approval on the effectiveness
of the product „Leela Quantum H.E.A.L.-Capsule“
for human energetic deregulation
long term project-imprints
also referred to as "test object" in the project





Internationaler Fachverband für BESA | ZVR Nr. 975047937
Hauptstraße 1, A 4861 Kammer-Schörfling am Attersee | Österreich - Austria
Tel.: +43 – 664 – 73152899 | E-Mail: info@ifybesa.at

Client

Firma Leela Quantum Tech, LLC
Attn: Eleonora Goldenberg
1421 LUISA STREET, STE G
SANTA FEE, NM 87505
USA

Project participants:

Project leader: Wolfgang Hans Albrecht, präsidant and scientific director of the IFVBESA

Test person: Eva Krankl, Vicepräsident and deputy scientific director of the IFVBESA

Respondent: 2 anonymous subjects in the Detail-Long-term project P71 4.1
These break down as follows:
- 1 subject with various imprints (beliefs) see also project P71 4.0
- 1 subject at various imprints (beliefs)

other participants: none

Project location:

Location of the IFVBESA, Hauptstraße 1, A 4861 Kammer/Schörfling

Date: 09.09.2020 until 14.02.2021

Project duration: 159 Days



Contents

BESA legend for the interpretation of the BESA measurement results	5
Basics of the research project creation P71.....	6
IFVBESA-BESA reference testing research funding services	7
Research project description (detailed project)	14
Test procedure.....	15
All BESA-tests at a glance	35
General information about the test result.....	36
Autorized Summary	36

Important notes:

The client owns the right to exploit this project report. Irrespective of this, this report represents intellectual property of IFVBESA as the contractor. The contractor is entitled to use this project report for other purposes if this does not violate the client's data protection or confidentiality. On the other hand, the project report, with the exception of the "authorized abridged version", may not be changed or passed on in abridged form without the consent of the IFVBESA. The order for this project refers to bioenergetically measurable values and their interpretation according to the guidelines of BESA or the IFVBESA. The maintenance of the quality of the tested products as well as their regular control is the task and responsibility of the client. Investigation of the manufacture, mechanism of action or interpretations of the Client's products to third parties is not the responsibility or task of the Contractor. Video recordings may be made only with the permission of IFVBESA.



BESA legend for the interpretation of the BESA measurement results

The measured value of 50 on the tested meridian represents an optimal energetic state in this organ or its subordinate and superordinate levels. Also measured values in the range of 50 to max. 70 still count as a neutral and balanced energy status. The organism is able to regulate irritations of the system (wrong environmental signals) very well.

Measured values above 70 to 100 represent the inflammatory range or a so-called energy surplus as a reaction to the irritations of the system by corresponding environmental signals. After reaching the maximum values, the energy state tips into the degenerative (blue) range.

Measured values from below 50 to around 0 represent the so-called degenerative measuring range or a lack of energy as a reaction to the stimulation of the system by corresponding environmental signals.

Measured values represented by a so-called pointer drop of more than 3 scale lines indicate total deregulation. The influence of certain environmental signals then leads to such strong system overloads, which can only be brought into harmonization by corresponding new signals.

BESA key figures:

up to 0,79	very deep energetic regulatory disorder (SSD) energy deficiency
0,8 to 1,19	strong energetic regulation disturbance (SD) degeneration/energy deficiency
1,2 to 1,59	energetic regulation disorder (D) degeneration/energy deficiency
1,6 to 1,99	degenerative transition area (DÜ)
2,0 to 2,39	optimal regulation (OR)
2,4 to 2,79	in the regulation (R)
2,8 to 3,19	partial inflammation = regional energy excess (PE)
from 3,2	total inflammation = strong general energy surplus (TE)



Basics of the research project creation P71

The international professional association for bioenergetic system analysis was commissioned by the company Leela Quantum Tech LLC to test the effect of the test object "Leela Quantum H.E.A.L Capsule" by means of bioenergetic system analysis (BESA) over a period of 5 months or to prove its mode of action over a longer period of time. The testing took place independently of the subjective feeling of all test persons.

Description of the "Leela Quantum H.E.A.L.-Capsule" by the client:

The capsule works due to quantum energy on one side (in the capsule and very strongly in the titanium spheres) and due to the following three frequencies on the other side:

- Primordial human healing frequency
- Primordial water healing frequency
- Biobase frequency with about 100 vitamins, minerals and plant extracts important for the human body (composition adjusted after 30 years of research)

The primal healing frequency activates "the inner healer" and thus the immune system. Even though we see in all tests that the frequency spreads everywhere in the system, in the blood, etc. after only about 30 - 45 seconds, and even after a few minutes more energy and well-being can be seen, this frequency is one that has a long-term effect. Depending on the user, the frequency helps bring physical issues into healing at their pace/time. By sending a permanent signal to the body, in which everything is designed to heal, the body begins to heal itself. This happens in a way in which the consciousness reminds the "inner healer", brings it to "wake up", so to speak.

The primal water frequency is, so to speak, the energetic basis of healing springs on earth, some of which have already dried up. Our body consists to a large extent of water. This frequency helps therefore very fast in the body, but evenly also, if food or beverages (water) are charged with the "Leela Quantum H.E.A.L.-Capsule".

The Biobase frequency optimizes the vitamin-mineral household in the body.

By carrying the "Leela Quantum H.E.A.L.-Capsule" on the body (preferably more or less in front of the heart chakra), in the pocket or by holding it in the hand, these special frequencies can be made available to the human body and thus to the energy system in a quasi bioavailable way.

About the design of the "Leela Quantum H.E.A.L.-Capsule". The test object was designed in such a way that 5 titanium spheres made of (medical titanium) can be placed inside the capsule. The capsule as a shell is made of aluminum. The titanium spheres inside the aluminum capsule are charged with quantum energy, which transmits the information stored in the capsule to the user. In other words, in this process, the quantum energy of the titanium



spheres acts over the information of the capsule and transmits this information to the environment and its biological objects.

IFVBESA-BESA reference testing research funding services

General information about this project:

Regarding Detailed Project P71 4.1 - Human Energetic Deregulations Long-Term Subject Imprints: This project has already been started in project P71 4.0. Decidedly, this detailed project P71 4.1 is about the question whether the "Leela Quantum H.E.A.L.-Capsule" was able to neutralize pre-tested beliefs in the 2 subjects over the period of more than 5 months. The "Leela Quantum H.E.A.L.-Capsule" was worn by the subjects during the day for about 12-14 hours during the 5-month project. For this purpose, corresponding BESA tests were carried out according to the following lists in order to question the imprints on the test persons. The embossings are digitized or displayed as substance.

About subject 1

Subject 1 is a woman who is just under 50 years young. She has been pre-registered as a test person for this project since July.

The proband is in a leading position of an educational project (director of an elementary school) and mother of a daughter at the age of 16. She is married, her life partner is a manager of a medium-sized company.

Even as a child, anxiety was always at the center of her development. She spent many years of her childhood with her grandma. Although she felt comfortable with her grandma, she still longed for her mother's affection and love. Mom was the dominant part in the family, and dad became more and more emotionally withdrawn as she grew older. The respondent constantly suffered from fear of loss towards the mother. He was afraid that mom would not come back or that she would not pick her up from grandma's house. At the age of about 9, she had to experience how her young sister, whom she had grown very fond of, died in a traffic accident on the way to school.

This intensified her fear of loss even more. As a child and teenager she felt too fat and as an outsider to her classmates. She met her current life partner and their daughter is now 16 years young. The birth of her daughter was extremely difficult because she was born with a life-threatening heart defect. As a result, she clung strongly to her daughter and tried to take every challenge away from her. Thus, her daughter grew up equally in this fear.

Although she is very talented both technically and mentally, she finds it difficult to gain a foothold in her life and in society. She tries to please her father, who would like to see her daughter graduate from high school, since he himself only completed her second degree. The father lives in the world of business, job, good income, prestige, etc.



The mother would rather see the daughter follow her heart. This situation puts the whole family to an existential test. The father is very challenged, especially in times of Corona in the company. In addition, there is his fear that the lifestyle and the family could break up. This puts a strain on his health and, of course, on mother and child. Both are afraid something might happen to the father/husband.

The subject carries the same emotional characteristics as his own mother. Exerting power on the husband and daughter. She feels obligated to pull the coals out of the fire for everyone. Failure of this to work leads to severe nervous and emotional stress on the subject. For the subject, it is now a matter of finding his center and standing out of this triangle. Against this is the challenge of reducing the existing fears.

The following emotional themes were tested out via BESA:

Beliefs/inspirations about Subject 1, tested out on 09/09/2020

Acute stress disorder (nervous breakdown)

Wanting to meet the expectations of the entire environment (family). Feeling driven, developing little or no reference to oneself. The recognition of others is more important than one's own. Does not want to be and must not be an egoist. Noble words must be lived against all odds. Overextends oneself in fulfilling the responsibilities of others.

- Demands nest warmth
- Desperate struggle for recognition of others
- Expectation anxiety from withheld emotion
- Autonomous consciousness is denied
- Life is only hell and suffering, lives only for promised salvation
- Rise above others out of hurt to be untouchable

In the "Leela Quantum H.E.A.L.-Capsule" the following solutions were introduced

- Argentum nitricum
- Artemesia vulgaris
- Gesenium sempervirens
- Nitrogenium oxygenatum
- Organum majorana
- Platinum metallicum

Mind

The mind symbolizes moods, through which the mental state is expressed. The excluded emotionality. Previously disciplined and repressed potentials can no longer be controlled and come to consciousness. Themes of previous denial of life and rejection of life claim their right. Joy of life and enjoyment of life should take the place of unconscious prohibitions. To bear personal responsibility and to live self-determination is rejected. The patient forces a supply



situation, even if he pays a high price for his adaptation. The readiness for self-responsibility must be strengthened. The mentally ill person, through his own stake emotionality, often makes others regain access to their own emotions.

- Suppressed emotions manipulate conscious perception
- Personality image forbids the expression of true feelings
- Leaning to the point of self-destruction
- Feels the potential of personal freedom and believes to be punished for it
- The vision of life is to be forced

Anxieties/Phobias

Anxieties describe situations in which the personality differentiates itself negatively from others. She is ashamed of being who she is and compensates for the lack of belonging by seeking and portraying weaknesses in herself. In comparison with others, she wants to appear weak and negative in order to gain support. This support corresponds to an apparent but unsatisfactory belonging. The greater the dichotomy with the environment is felt, the greater the anxiety. The courage to stand by oneself and be honest with oneself must be learned.

- Negative thinking for the sake of self-protection
- Fears one's own mental abyss, compensates with blame
- Being ashamed of one's individuality
- Adapting oneself beyond recognition
- The frustrated do-gooder

In the "Leela Quantum H.E.A.L.-Capsule" the following solutions were introduced

- Cannabis indica
- Cereus bonplandii
- Cuprum arsenicosum
- Mancinella hippomanes
- Passiflora incarnata
- Aconitum napellus
- Actea spicata
- Aqua marina
- Asterias rubens
- Taraxacum officinale

Hyperthyroidism, hyperthyroidism

Runs after the love and approval of others e.g. mother, father or spouse, without ever being able to fulfill the supposed expectations. Often does not have chemistry with the "adored" person. Acceptance and tolerance, both of one's own personality and the personality of the other, would have to take the place of adoration.



- Lack of self-esteem
- Does not feel up to the flow of life

In the "Leela Quantum H.E.A.L.-Capsule" the following solutions were introduced

- Aurum metallicum
- Badiaga

The following emotional themes/attitudes were tested out for subject 2 via BESA:

Beliefs/attitudes about subject 2, tested out on 09.09.2020:

Connective tissue weakness

Weakness of the connective tissue symbolizes a lack of inner stability and above all an exaggerated readiness to adapt. The security to be allowed to live one's own needs, to be able to assert oneself against others is no longer or only marginally present due to experiences made.

- Refusing to accept life, wanting support
- Wanting to change others in order to strengthen one's own security.
- Belief that one's own needs can only be asserted by warfare

In the "Leela Quantum H.E.A.L.-Capsule" the following solutions were introduced

- Calcium carbonicum - To surrender to life and receive support
- Hepar sulfuris - I feel safe and powerful, others are allowed to be as they are.
- Magnesium carbonicum - I am in harmony with my needs

The thyroid gland

The thyroid gland indicates a person's motivation in life, whether they find life exciting and interesting or whether they reject it. If life is focused on pleasing others and therefore being loved, the chance that this very thing will not be fulfilled is very high. A healthy thyroid gland indicates that the personality does not attach one's motivation in life to others and has supposedly developed a lot of autonomy and self-determination to enjoy life.

Nodes of the thyroid gland

Chasing the love and approval of others and being hurt in the process. Refusing to take note of one's own behavior and desires.

- Denying own level to be taken care of

Hyperthyroidism, hyperthyroidism

Runs after the love and approval of others e.g. mother, father or spouse without ever being able to meet the supposed expectations. Often does not have chemistry with the "adored" person. Acceptance and tolerance, both of one's own personality and of the personality of the other, would have to take the place of veneration.

- Being ashamed of one's individuality
- Lack of self-esteem



- Does not feel up to the flow of life
- The chemistry is not right, can not let live
- Desire to create protection for oneself through conformity

Hypothyroidism, underactive thyroid gland

Conviction of not being able to achieve the love of others. Frustration: although everything has been done for one's own recognition, success has failed to materialize. Now only one thing seems to remain: to withdraw and entrench oneself. The solution, however, is to finally make oneself straight, to become more aware of one's own feelings, one's inner voice, and to acknowledge them.

- Everything remains the same, frozen in dependency
- Everyone sits in the same boat, artificial community
- Not having remembered, not feeling loved
- Holding on to what is proven and known
- Mental conflicts from fear of life

In the "Leela Quantum H.E.A.L.-Capsule" the following solutions were introduced

- Clematis erecta - I am grateful for my abilities and potentials
- Aqua marina - I am who I am, a valuable and loving person
- Aurum metallicum - I am aware of my own value
- Badiaga - I am the flow of life - I am the eternal and infinite evolution
- Fluoricum acidum - I love all people as they are
- Spongia tosta - My individuality and independence make me free
- Boletus laricis - I am the dynamics of life
- Bromium - My individuality springs from my potentials.
- Natrium muriaticum - I let life flow
- Jodum - I am loved and respected
- Solanum tuberosum aergrotans - I love to live according to the idea of creation

Hair

Hair stands for the visible, manifested vitality of a person and for his power of representation

Hair loss

Hair loss makes the loss of vitality visible. Through active, unsuccessful adaptation to others or a protective community, one's own vitality is lost. Already in former times the one who had no more hair was considered as weak and powerless.

- Resigning oneself to infirmity out of weakness

In the "Leela Quantum H.E.A.L.-Capsule" the following solutions were introduced

- Selenium metallicum - I am a creator



Spleen

The spleen symbolizes the joy of life and belongs to the lymphatic system in the systematics of organs and systems. In Chinese medicine, the spleen symbolizes the mother, the primal principle. The spleen is also considered the entry port of the etheric forces. This is where the delimitation theme is found, when health problems are present, it is difficult to protect oneself against hostile energy. Spleen stands for insistence on something, but also for perseverance. In the pathological sense, the spleen symbolizes stubbornness, rigid adherence, "sticking" to something, to circumstances or beliefs.

Spleen inflammation

The spleen symbolizes the joy of life and belongs to the lymphatic system in the systematics of organs and systems. In Chinese medicine, the spleen symbolizes the mother, the primal principle. The spleen is also considered the entry port of the etheric forces. This is where the delimitation theme is found, when health problems are present, it is difficult to protect oneself against hostile energy. Spleen stands for insistence on something, but also for perseverance. In the pathological sense, the spleen symbolizes stubbornness, rigid adherence, "sticking" to something, to circumstances or beliefs.

Spleen pricks

Lack of delimitation. The joy of life is in danger. The taunts of the environment are no longer tolerated - also because they are overestimated - and express themselves in a painful way.

- First the work, then the pleasure
- Feeling dependent and enslaved
- Rejected and alienated despite friendly efforts
- Life force is not used for healthy self-interest
- Clinging to what is tried and known
- Adopting the traditional, status-appropriate form of communication without criticism
- The frustrated do-gooder
- Claim to power and power replace ethics and individuality

In the "Leela Quantum H.E.A.L.-Capsule" the following solutions were introduced

- Arsenicum album - I am the joy of my infinite further development
- Bryonia alba - My individuality springs from my philosophy of life
- Ceanthus americanus - My work is fun and springs from my abilities
- China officinalis - I am independent and free
- Bellis perennis - I am always loved and encouraged
- Carbo vegetabilis - I use my life force for personal growth and prosperity
- Natrium muriaticum - I let life flow
- Ranunculus bulbosus - I live with integrity
- Taraxacum officinale - I live my abilities and potentials
- Theridion curassavicum - Integrity, ethics and individuality make me powerful



Ear noises - Tinnitus

The inner voice announces itself. Own individual background noise, mostly repetitions of noises from shock situations. Depending on the understanding of such connections, one can also speak of contacts to spiritual worlds. Inconsistencies or external divergences between desires and goals and their realization (stress) lead to disturbances of perception. External voices are blocked (hearing loss). The inner voice is not yet clear enough as a message. This leads to further stress and anxiety and ultimately into a "vicious circle". A realization is missing. Contact with the inner voice, grounding, must first be restored. The individual conflict behind it must be identified. Often also unresolved conflict issues and contacts with deceased!

- Fear of one's own mental abyss, compensates with blame
- Inhibition of development due to fear, of life and self-responsibility
- Creativity arises from inner pressure
- Believes that one's own needs can only be enforced by war.
- The breach of trust, the stab in the heart

In the "Leela Quantum H.E.A.L.-Capsule" the following solutions were introduced

- *Aceta spicata* - I am grateful for my path in life, because it leads me to the truth.
- *Barium carbonicum* - I am the way, the truth and the life
- *Bellis perennis* - I am always loved and supported
- *Conium vegetabilis* - I am in harmony. I am thus a meaningful part of society and the divine whole
- *Clematis erecta* - I am grateful for my abilities and potentials
- *Elaps corallinus* - Through my individuality I live in freedom
- *Spigelia anthelmia* - Compassion and tolerance are important aspects of my life philosophy

The above mentioned beliefs are written as solutions in a suitable size on a sheet of paper, so that this can be laid out on the inner wall of the "Leela Quantum H.E.A.L.-Capsule". Then the spheres are placed inside the capsule. The energetic force of the titanium spheres coming from the inside of the "Leela Quantum H.E.A.L.-Capsule" reflects the solutions on the sheet into the respective test person in order to create a corresponding effect in his subconscious. The permanent use of the "Leela Quantum H.E.A.L.-Capsule" should neutralize the beliefs.

To the general information of the information transfer:

The information transfer takes place from the hyperspace of the test object to the hyperspace of biological objects (humans, animals, plants). From there, the information reaches the reference space or the energy space via so-called interaction channels. This is a union of, among other things, all organs and energy forms in the biological object. There, the information of the program can dynamically materialize and thus change current states. The changes can appear in the form of neutralization or harmonization of disturbances, dissolution of problems, blockages and disharmonies.



The "Leela Quantum H.E.A.L.-Capsule" is tested according to the requirements of the client within the framework of the valid conditions of the IFVBESA for the awarding of quality seals. Depending on the significance of the test results, seals of approval are awarded in 3 categories, taking into account all tests of a project.

The client and developer of the "Leela Quantum H.E.A.L.-Capsule" assumes that it is able to neutralize the presented deregulations by the indicated beliefs on the 2 test persons again as well as to replace the associated negative states by positive states. Whether the "Leela Quantum H.E.A.L.-Capsule" is able to do this, should be questioned by the following commissioned BESA tests on the test persons.

Research project description (detailed project)

The reason for the test was to prove the functionality of the "Leela Quantum H.E.A.L.-Capsule" by test results obtained by confronting test persons with exactly selected toxic information (beliefs/inspirations) in order to significantly prove and compare their reactions without the "Leela Quantum H.E.A.L.-Capsule" and with the "Leela Quantum H.E.A.L.-Capsule". Subjects will be contacted, i.e., associated, with precisely predetermined BEFORE measurements and an AFTER measurement.

- The BEFORE measurements are made without the "Leela Quantum H.E.A.L.-Capsule"
- The AFTER measurement is made with the "Leela Quantum H.E.A.L.-Capsule"

The question in the AFTER measurement is: "Is the "Leela Quantum H.E.A.L.-Capsule" suitable and able to harmonize or neutralize the so perceived negative effects of the above mentioned stress factors on the energy system or organism of the test persons?"

The correspondingly designed tests are to provide information about this by comparing the preliminary measurements without the "Leela Quantum H.E.A.L.-Capsule" with the test results of the follow-up measurements carried out using the "Leela Quantum H.E.A.L.-Capsule".

The concern of the development team of the company Leela Quantum Tech LLC is to let determine whether the test object, the "Leela Quantum H.E.A.L.-Capsule" as noted in the product description is suitable to harmonize and/or neutralize the disturbances, problems, blockages, disharmonies in the meridian system of biological objects (test persons) resulting from mentioned stress factors..

Conditions:

BESA tests are performed in the premises of IFVBESA under laboratory conditions, at room temperature 20° Celsius, on natural wooden floor. The test persons are deswitcht (made testable) before the BESA tests or the test possibilities are questioned with the respective test person.

Pos.1 BESA 1 test BASIC (bioenergetic status) on 2 test persons



- Pos.2** BESA 2 testing with confrontation with the respective belief sets on the 2 test persons
- Pos.3** BESA 3 testing with confrontation of the test persons with the respective belief sets as well as the "Leela Quantum H.E.A.L.-Capsule"
- Pos.4** BESA 4 Evaluation of the results in the detailed project and summary in an appropriate expert opinion according to sample

Procedure and specifications for the implementation

- 1. BESA-basic measurement of the test persons** at all previously determined measurement points (TING points) serve to determine the actual condition. The results are determined exactly according to the BESA specifications and documented via the BESA graphs.
- 2. The test persons** are brought into contact with the **corresponding beliefs depending** on the project, whereby the sequence discussed with the client is regarded as the specification and is adhered to accordingly. In order to be able to determine the current energy state, the measuring points mentioned under point 1 are measured in the same order and for the same duration for each test ampoule. The results are determined exactly according to the BESA specifications and documented via the BESA graphs.
- 3. Activation of the test object**
 - 3.1 The activation** of the "**Leela Quantum H.E.A.L.-Capsule**" is performed according to the client's instructions. The test subjects are brought into contact with the beliefs. The measuring points mentioned in point 1 are measured in the same order and time duration to determine the current energy state. The results are determined exactly according to the BESA specifications and documented via the BESA graphs..

Test procedure

BESA 1 BASIC Testing BEFORE as a status

In the first step, a basic bioenergetic test (bioenergetic status) was performed on the meridian end points (TING points) of the test persons.

BESA 2 Testing BEFORE the beliefs

In the further BESA testing process, the beliefs are tested on the subjects. The questions are: How does the energy system react to these beliefs? How does the energetic status change when confronted with the toxic information of the beliefs? What are the differences in each case compared to BESA 1 BASIC testing BEFORE?



BESA 3 Testing AFTER with the "Leela Quantum H.E.A.L.-Capsule" in combination with the beliefs sets

In the third BESA test, all the beliefs already tested above are introduced into the measuring circuit together with the "Leela Quantum H.E.A.L.-Capsule". Now the question is: How does the energy system of the test persons react within the area of effect of the "Leela Quantum H.E.A.L.-Capsule", if all tested belief sets are activated in sum at the same time?

Proband 1

BESA 1 Testing BASIC BEFORE

BESA 1 Testing BASIC BEFORE as a status

Eva Krankl performed a basic BESA test on the subject. All BESA tests are performed at the TING points (40 nail fold points on the fingers and toes). In the further course, the beliefs were tested out as indicated on page 8.

Goal: The creation of a basic test (status) as a representation of the energetic starting situation for all further BESA tests. The testing of the beliefs as a background to the identified stresses of the test person.

BESA Test evaluation P74 1.0
from **09-09-2020 at 12:20 – 12:25** (5 Minutes) page 17 and 18

result:

92 % in the blue area

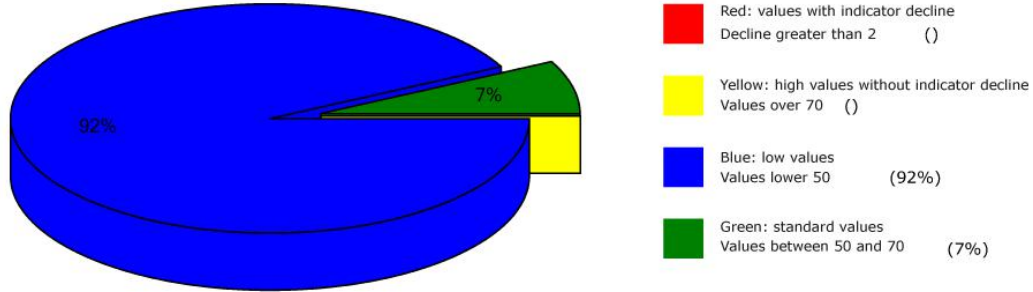
7 % in the green area

1 % in the yellow transition area

Conclusion: as the BESA graphs and pie chart show, almost all measurement results are in the degenerative blue range (energy deficiency) or in the inflammatory yellow range (energy surplus).



Overview of BESA measuring



BESA basic test

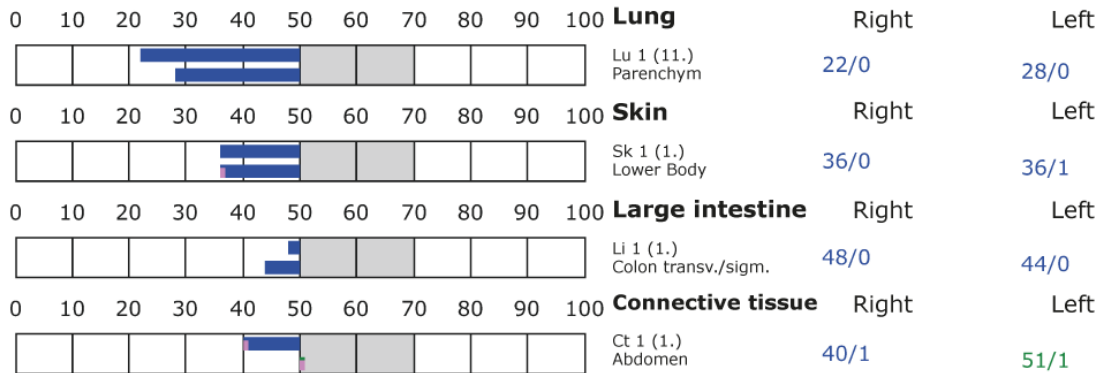
+++ : Indicator decline > 15 Skt.
 ++ : Indicator decline 6-15 Skt.
 + : Indicator decline 3-5 Skt.

T: Total inflammation (>89 Skt.)
 P: Partial inflammation (70-89 Skt.)

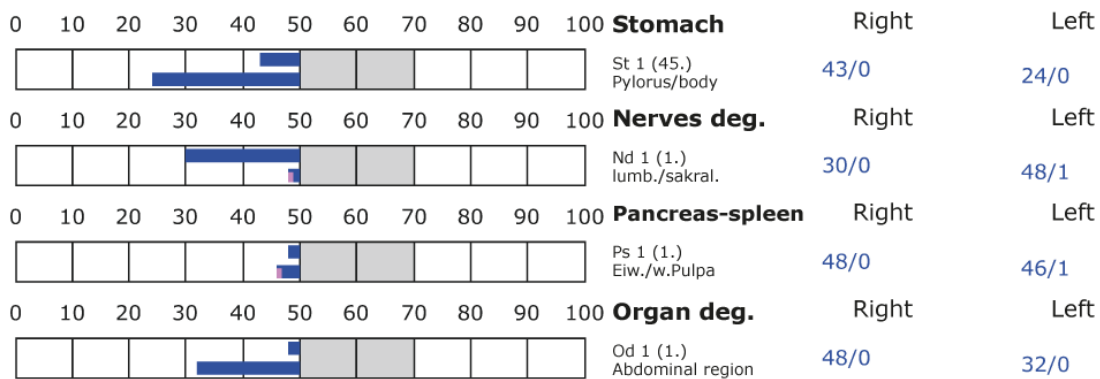
D: Degeneration (< 50 Skt.)

Standard values: (50-70 Skt.)

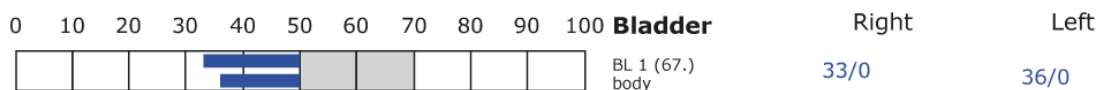
Element: lu - sk - li - ct



Element: st - nd - ps - od



Element: bl - ly - ki - al





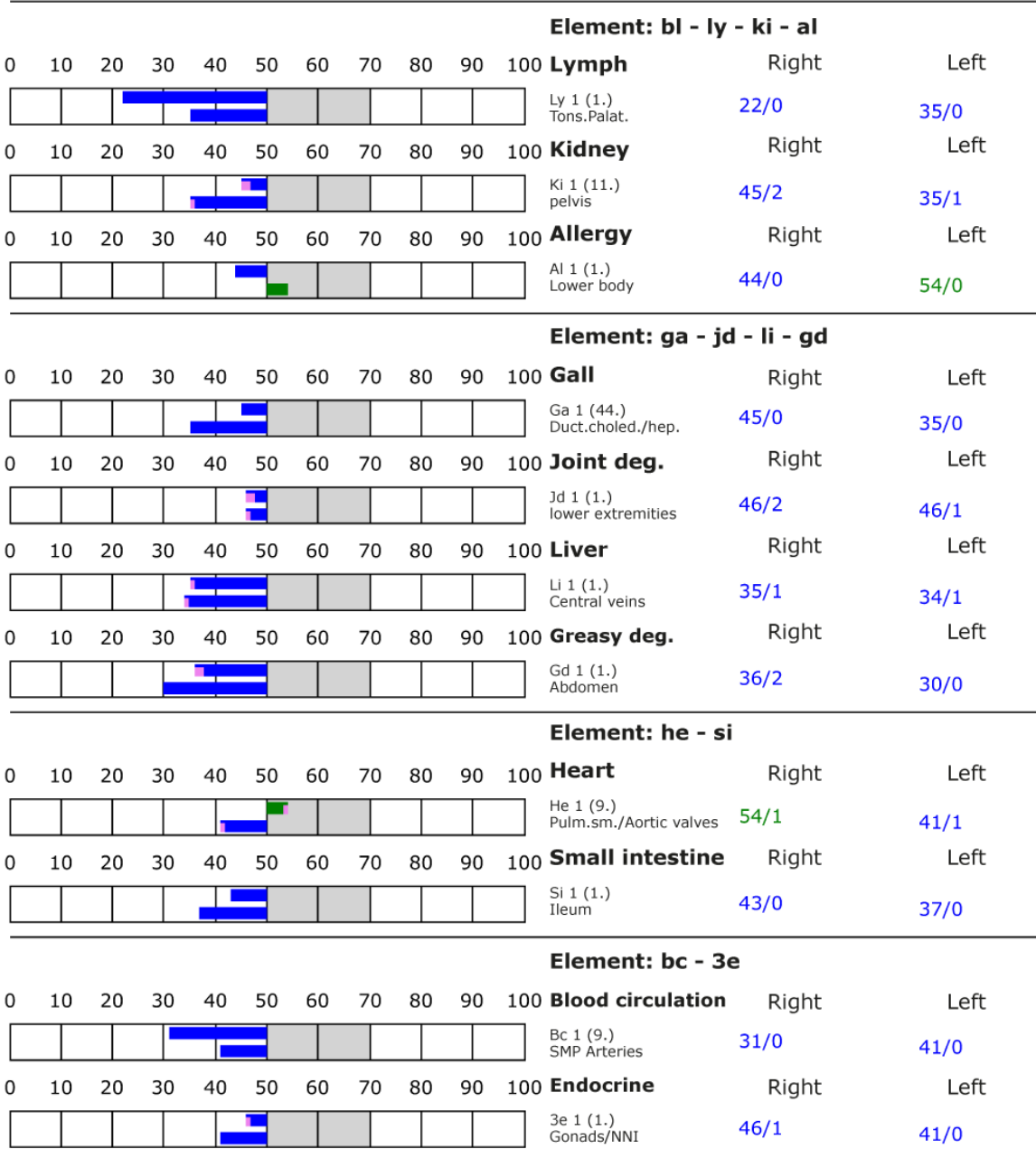
BESA basic test

+++ : Indicator decline > 15 Skt.
 ++ : Indicator decline 6-15 Skt.
 + : Indicator decline 3-5 Skt.

T: Total inflammation (>89 Skt.)
 P: Partial inflammation (70-89 Skt.)

D: Degeneration (< 50 Skt.)

Standard values: (50-70 Skt.)





BESA 2 Testing AFTER

BESA 2 Testing BASIC AFTER as a status without the "Leela Quantum H.E.A.L.-Capsule"

Eva Krankl performed another basic test 2 months after the BESA 1 test BASIC without the influence of the "Leela Quantum H.E.A.L.-Capsule" on the test person. All BESA tests are performed at the TING points (40 nail fold points on the fingers and toes). In the further course, the beliefs were again tested out as indicated on page 8-9.

Goal: The creation of a basic test (status) as a representation of the energetic development of the test person for all further BESA tests. To test the beliefs in order to control possible changes in the bioenergetic system of the subject.

BESA Testevaluation P71 4.1

from **31-10-2020 at 12:26 – 12:34** (8 Minutes) page 21 and 22

result: The measurement result indicated a strong improvement of the energetic loads at the meridian endpoints and subsequently on the subordinate metabolic situation of the test person compared to the BESA 1 test BASIC.

75 % in the green area

22 % in the blue area

2 % in the yellow area

1 % in the yellow transition area

Conclusion: As the BESA graphs and the pie chart show, more than 2/3 of all measured values are now in the optimal, green range. Only 25% were still in the degenerative blue range (energy deficiency) or the inflammatory yellow range (energy excess).

BESA testing against the originally tested beliefs of 09.09.2020 revealed the following situation:

- Desperate struggle for recognition
- Autonomous consciousness is denied
- Expectation anxiety from withheld emotion
- Life is only hell and suffering, lives only for the promised salvation
- Demands nest warmth Being ashamed of one's individuality
- Negative thinking for the sake of self-protection Feels the potential of personal freedom and believes to be punished for it



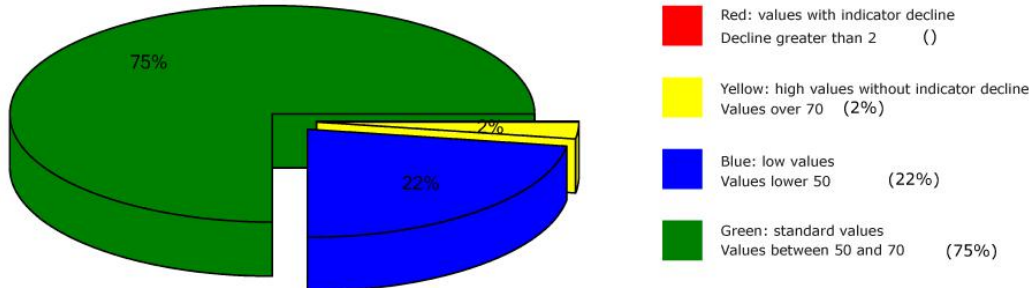
Internationaler Fachverband für BESA | ZVR Nr. 975047937
Hauptstraße 1, A 4861 Kammer-Schörfling am Attersee | Österreich - Austria
Tel.: +43 – 664 – 73152899 | E-Mail: info@ifybesa.at

- Suppressed feelings manipulate conscious perception
- Learning to self-destruction

This means that from the 18 beliefs tested on 09.09.2020, only 8 beliefs were tested on 31.10.2020. This means that through the application of the "Leela Quantum H.E.A.L.-Capsule" already more than half of the beliefs dissolved.



Overview of BESA measuring



BESA basic test

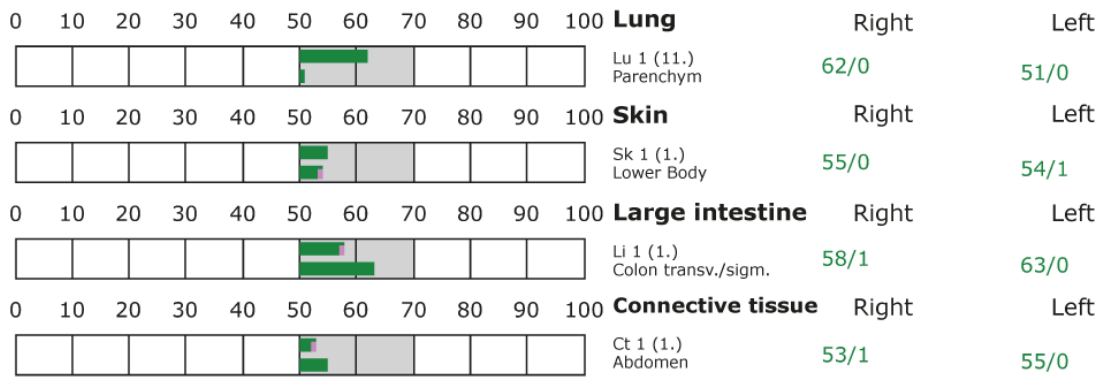
+++ : Indicator decline > 15 Skt.
 ++ : Indicator decline 6-15 Skt.
 + : Indicator decline 3-5 Skt.

T: Total inflammation (>89 Skt.)
 P: Partial inflammation (70-89 Skt.)

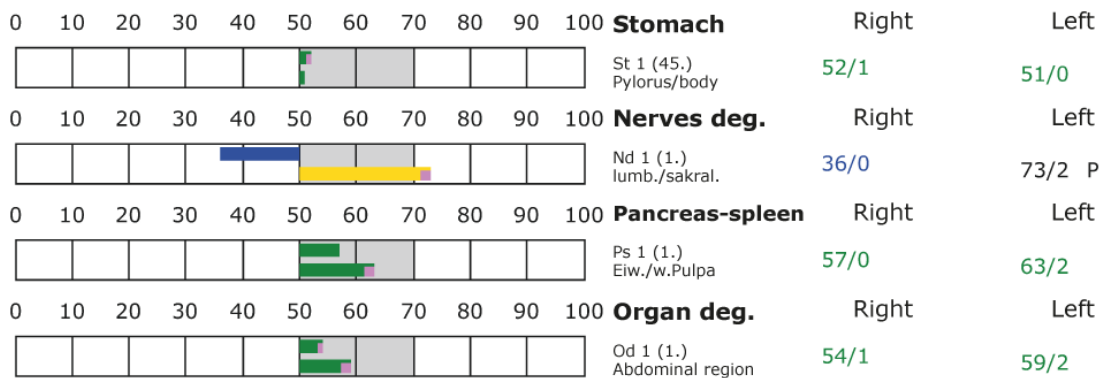
D: Degeneration (< 50 Skt.)

Standard values: (50-70 Skt.)

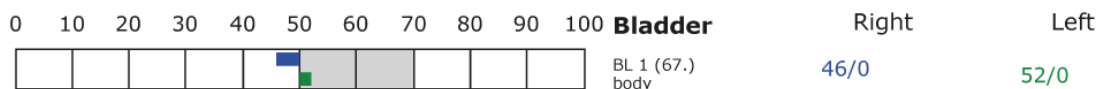
Element: lu - sk - li - ct



Element: st - nd - ps - od



Element: bl - ly - ki - al





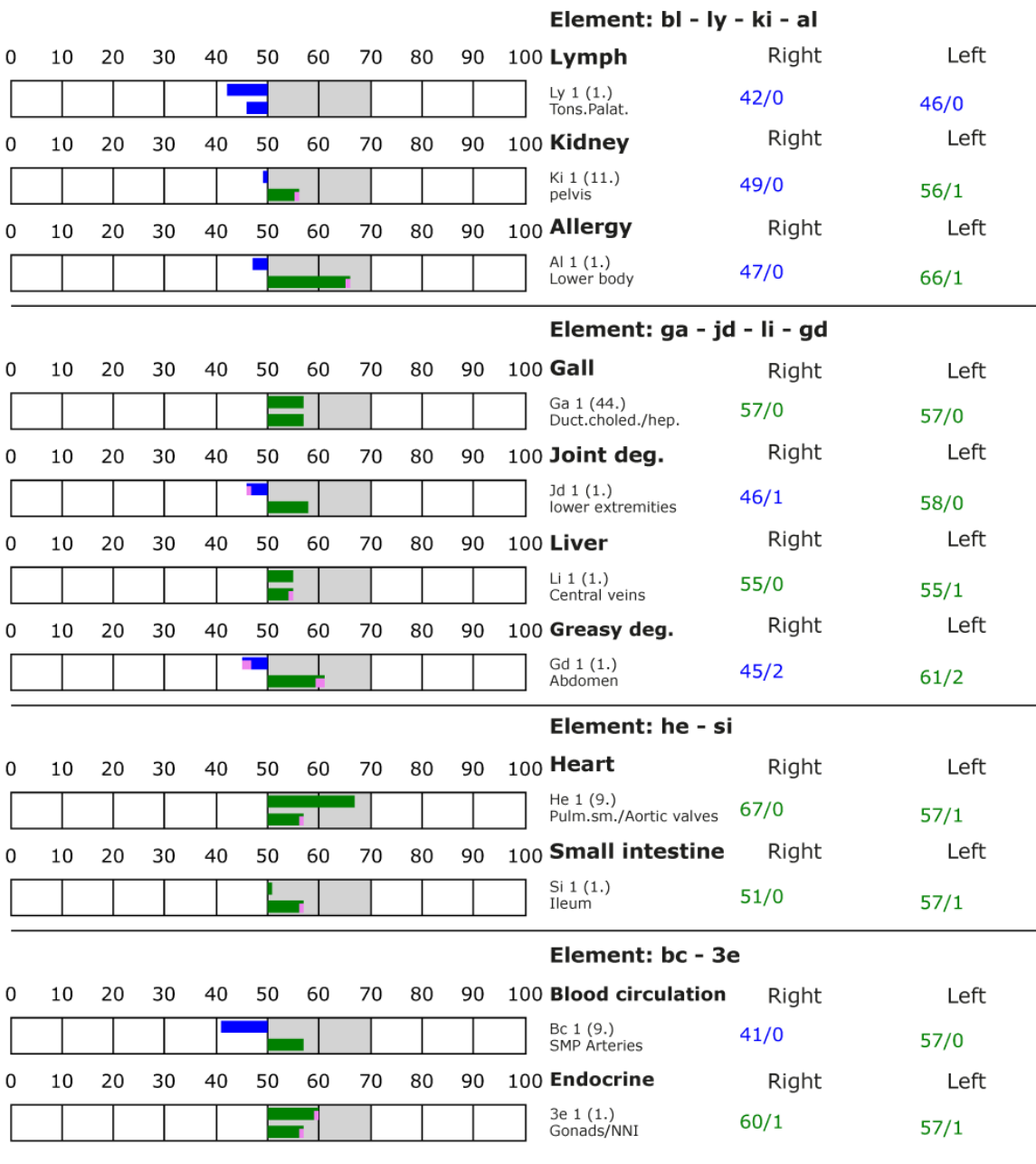
BESA basic test

+++ : Indicator decline > 15 Skt.
 ++ : Indicator decline 6-15 Skt.
 + : Indicator decline 3-5 Skt.

T: Total inflammation (>89 Skt.)
 P: Partial inflammation (70-89 Skt.)

D: Degeneration (< 50 Skt.)

Standard values: (50-70 Skt.)





BESA 3 Testing AFTER

BESA 3 Testing BASIC AFTER as a status without the "Leela Quantum H.E.A.L.-Capsule"

Eva Krankl performed another basic test without the influence of the "Leela Quantum H.E.A.L.-Capsule" on the test person 3 months after the BESA 2 test BASIC. All BESA tests are performed at the TING points (40 nail fold points on the fingers and toes). In the further course, the beliefs were again tested out as indicated on page 8-9.

Goal: The creation of a basic test (status) as a representation of the energetic development of the test person for all further BESA tests. To test the beliefs in order to control possible changes in the bioenergetic system of the subject.

BESA Test evaluation P71 4.1

from **31-01-2021 at 12:35 – 12:40** (5 Minutes) page 25 and 26

result: The measurement result indicated a significant improvement of the energetic situation at the meridian end points and subsequently on the subordinate metabolic situation of the test person compared to the BESA 2 test BASIC.

100 % in the green area

Conclusion: As the BESA graphs and the pie chart show, all measured values are now in the optimal, green range.

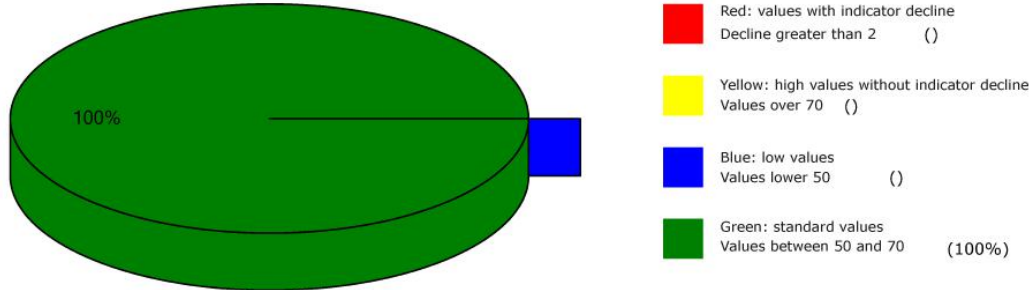
BESA testing against the originally tested beliefs of 10/31/2020 revealed the following situation:

- Senses the potential of Personal Freedom and believes being punished for it.
- Negative thinking for the sake of self-protection
- Desperate struggle for recognition of others

BESA testing of the beliefs revealed that of the 8 beliefs tested out on 10/31/2020, only 3 beliefs remained as of 01/31/2021. This means that by using the "Leela Quantum H.E.A.L.-Capsule" after a little more than 5 months only 3 beliefs could be tested.



Overview of BESA measuring



BESA basic test

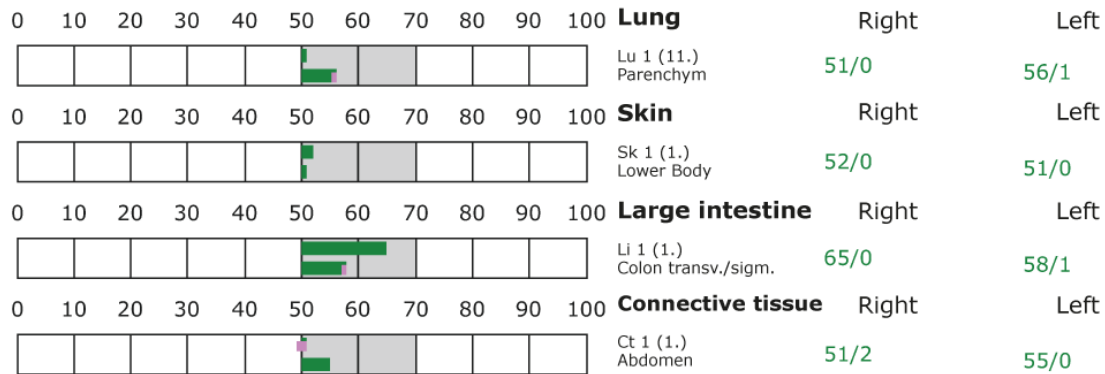
+++ : Indicator decline > 15 Skt.
 ++ : Indicator decline 6-15 Skt.
 + : Indicator decline 3-5 Skt.

T: Total inflammation (>89 Skt.)
 P: Partial inflammation (70-89 Skt.)

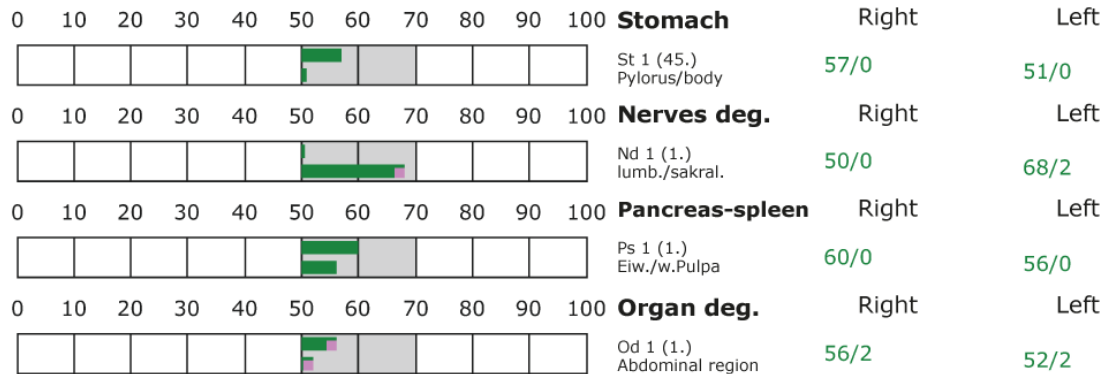
D: Degeneration (< 50 Skt.)

Standard values: (50-70 Skt.)

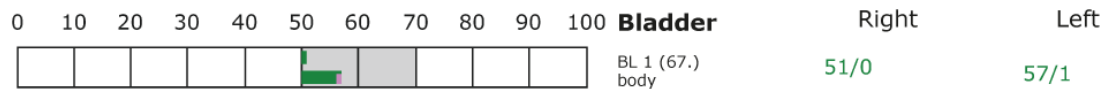
Element: lu - sk - li - ct



Element: st - nd - ps - od



Element: bl - ly - ki - al





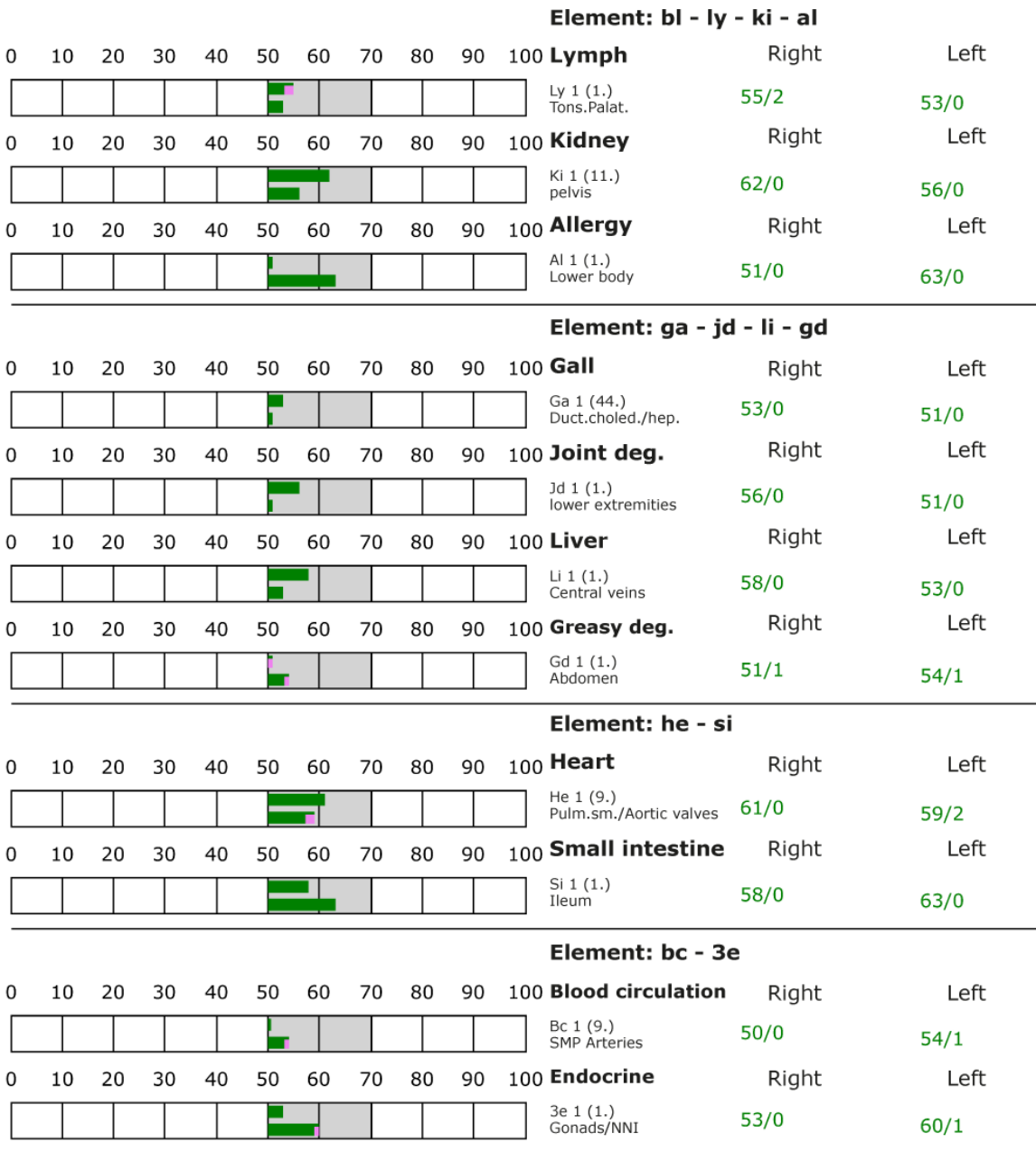
BESA basic test

+++ : Indicator decline > 15 Skt.
 ++ : Indicator decline 6-15 Skt.
 + : Indicator decline 3-5 Skt.

T: Total inflammation (>89 Skt.)
 P: Partial inflammation (70-89 Skt.)

D: Degeneration (< 50 Skt.)

Standard values: (50-70 Skt.)





Proband 2

BESA 1 Testing BASIC BEFORE

BESA 1 Testing BASIC BEFORE as a status

Eva Krankl performed a basic BESA test on the subject. All BESA tests are performed on the TING points (40 nail fold points on the fingers and toes). In the further course, the beliefs were tested out as indicated on page 10.

Goal: The creation of a basic test (status) as a representation of the energetic starting situation for all further BESA tests. The testing of the beliefs as a background to the identified stresses of the test person.

BESA Test evaluation P74 1.0
from **09-09-2020 at 19:43 – 19:56** (13 Minutes) page 27 and 28

result:

72 % in the blue area

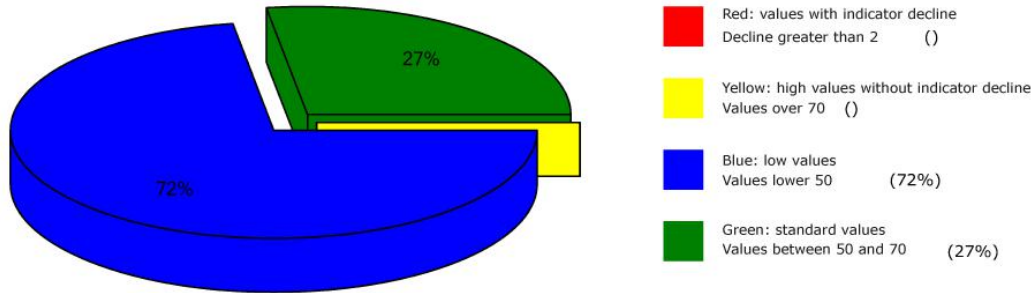
27 % in the green area

1 % in the yellow transition area

Conclusion: as the BESA graphs and pie chart show, more than 2/3 of all measurement results are in the degenerative blue range (energy deficiency).



Overview of BESA measuring



BESA basic test

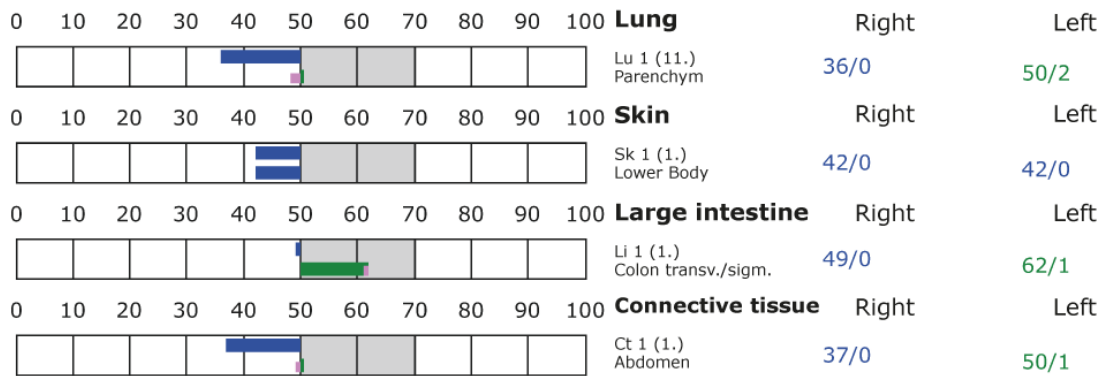
+++ : Indicator decline > 15 Skt.
 ++ : Indicator decline 6-15 Skt.
 + : Indicator decline 3-5 Skt.

T: Total inflammation (>89 Skt.)
 P: Partial inflammation (70-89 Skt.)

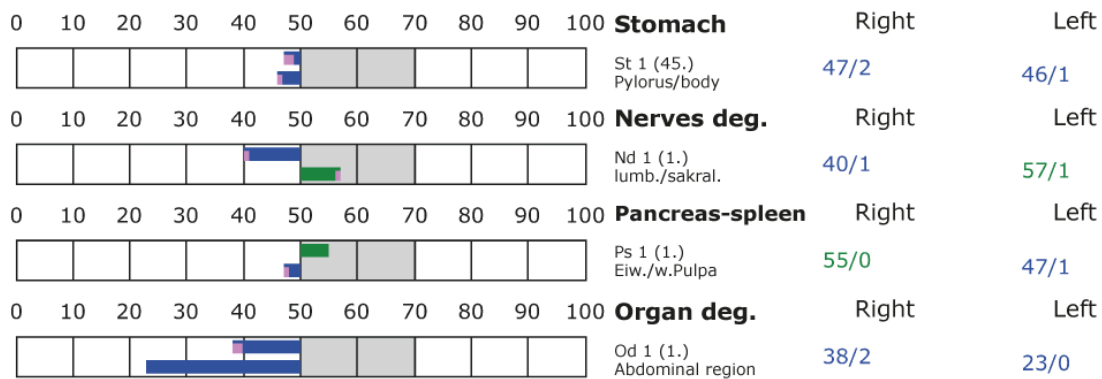
D: Degeneration (< 50 Skt.)

Standard values: (50-70 Skt.)

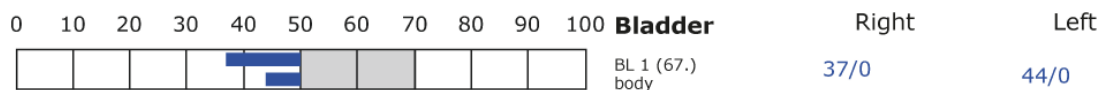
Element: lu - sk - li - ct



Element: st - nd - ps - od



Element: bl - ly - ki - al





BESA basic test

+++ : Indicator decline > 15 Skt.

++ : Indicator decline 6-15 Skt.

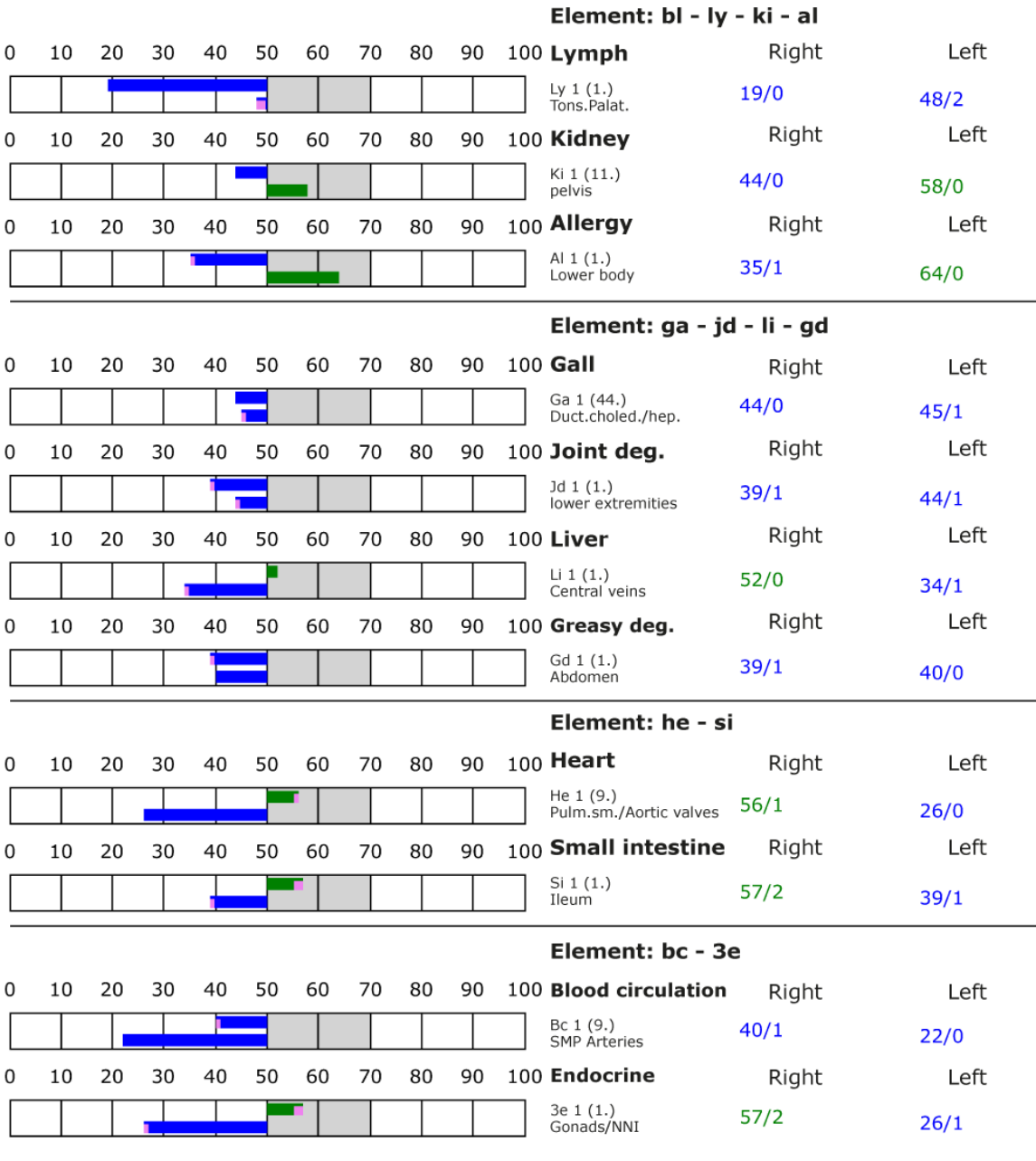
+ : Indicator decline 3-5 Skt.

T: Total inflammation (>89 Skt.)

P: Partial inflammation (70-89 Skt.)

D: Degeneration (< 50 Skt.)

Standard values: (50-70 Skt.)





BESA 2 Testing AFTER

BESA 2 Testing BASIC AFTER as a status without the "Leela Quantum H.E.A.L.-Capsule"

Eva Krankl performed another basic test without the influence of the "Leela Quantum H.E.A.L.-Capsule" on the test person 2 months after the BESA 1 test BASIC. All BESA tests are performed at the TING points (40 nail fold points on the fingers and toes). In the further course, the beliefs were again tested out as indicated on page 10.

Goal: The creation of a basic test (status) as a representation of the energetic development of the test person for all further BESA tests. To test the beliefs in order to control possible changes in the bioenergetic system of the subject.

BESA Test evaluation P71 4.1

from **31-10-2020 at 19:58 – 20:05** (7 Minutes) page 30 and 31

result: The measurement result indicated a strong improvement of the energetic loads at the meridian endpoints and subsequently on the subordinate metabolic situation of the test person compared to the BESA 1 test BASIC.

87 % in the green area

12 % in the blue area

1 % in the yellow transition area

Conclusion: As the BESA graphs and the pie chart show, more than 2/3 of all measured values are now in the optimal, green range. Only 12% were still in the degenerative, blue range (energy deficiency).

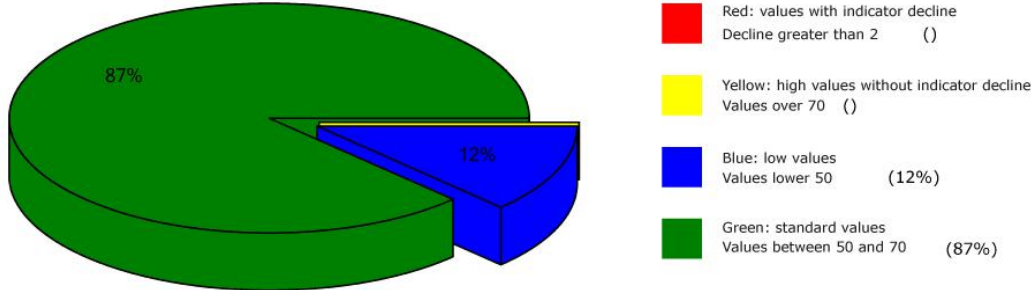
BESA testing against the originally tested beliefs of 09.09.2020 revealed the following situation:

- Not having remembered, not feeling loved
- Holding on to what is proven and known
- Work first, then pleasure
- Feeling dependent and enslaved
- Being rejected and alienated despite friendly efforts
- Life force is not used for healthy self-interest
- Creativity arises from inner pressure
- The breach of trust, the stab in the heart



This means, of the 33 beliefs tested on 09.09.2020, only 8 beliefs could be proven as of 31.10.2020. This means that through the application of the "capsule HEAL" already over 75% of the beliefs dissolved.

Overview of BESA measuring



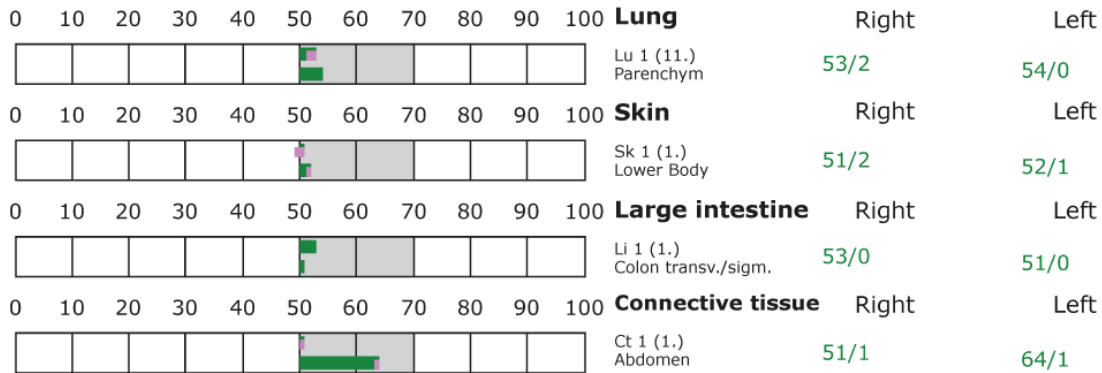
BESA basic test

+++ : Indicator decline > 15 Skt.
 ++ : Indicator decline 6-15 Skt.
 + : Indicator decline 3-5 Skt.

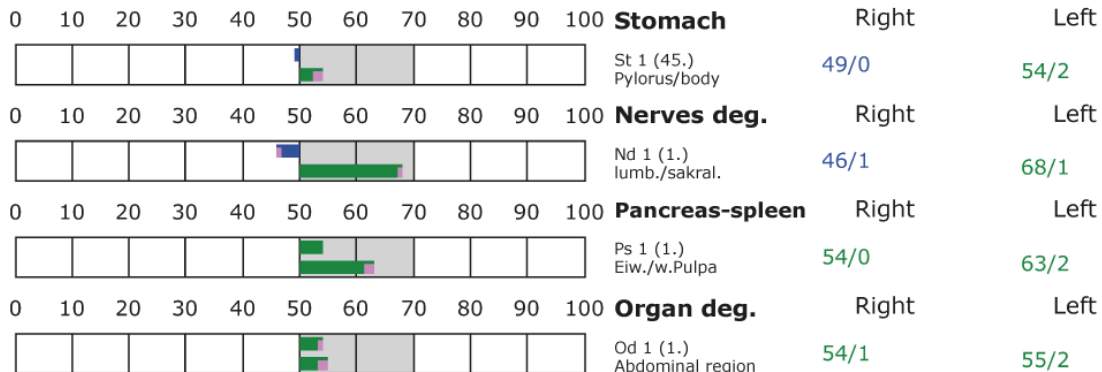
T: Total inflammation (>89 Skt.)
 P: Partial inflammation (70-89 Skt.)

D: Degeneration (< 50 Skt.) Standard values: (50-70 Skt.)

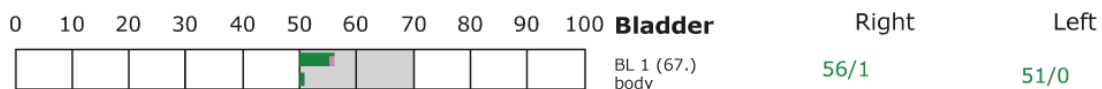
Element: lu - sk - li - ct



Element: st - nd - ps - od



Element: bl - ly - ki - al





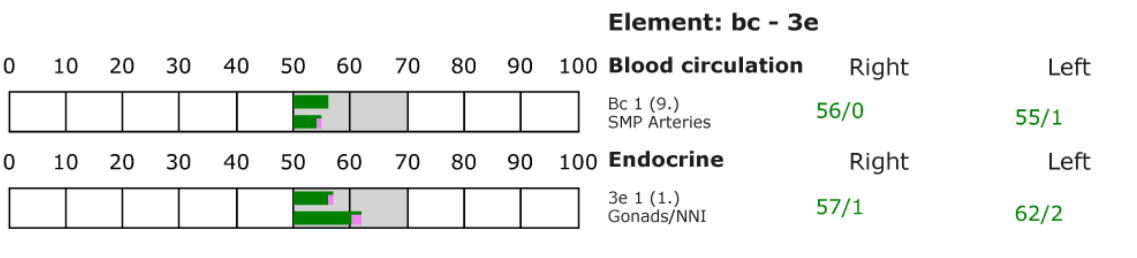
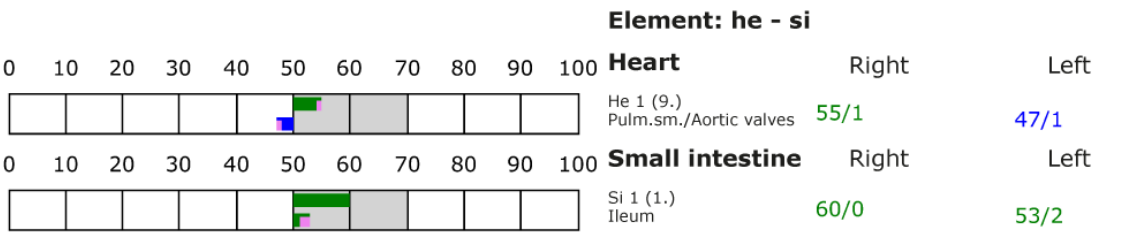
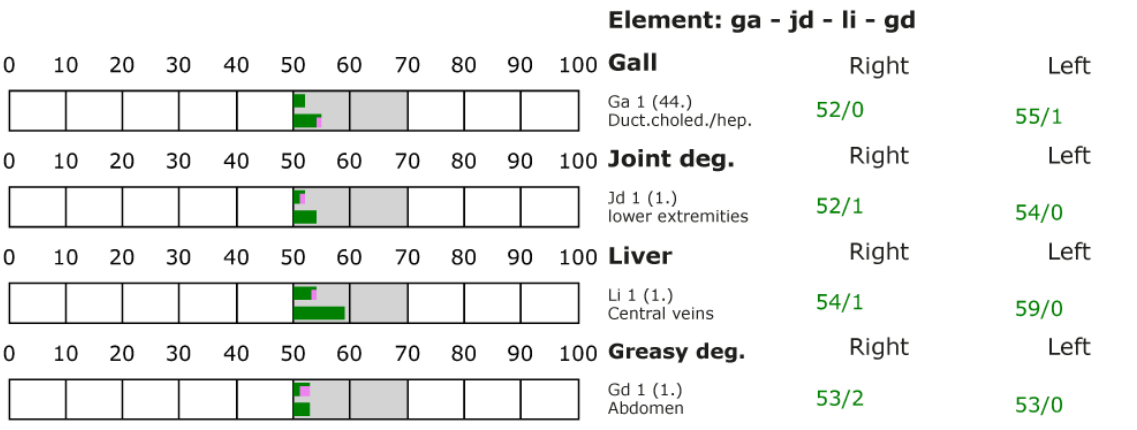
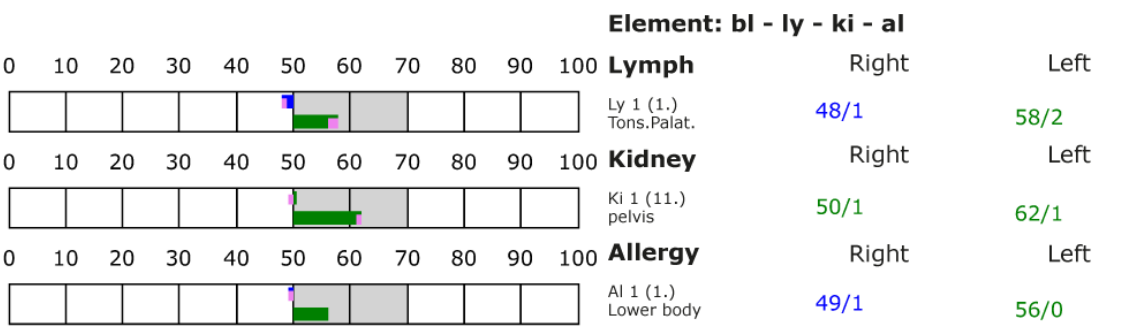
BESA basic test

+++ : Indicator decline > 15 Skt.
 ++ : Indicator decline 6-15 Skt.
 + : Indicator decline 3-5 Skt.

T: Total inflammation (>89 Skt.)
 P: Partial inflammation (70-89 Skt.)

D: Degeneration (< 50 Skt.)

Standard values: (50-70 Skt.)





BESA 3 Testing AFTER

BESA 3 Testing BASIC AFTER as a status without the "Leela Quantum H.E.A.L.-Capsule"

Eva Krankl performed another basic test without the influence of the "Leela Quantum H.E.A.L.-Capsule" on the test person 3 months after the BESA 2 test BASIC. All BESA tests are performed at the TING points (40 nail fold points on the fingers and toes). In the further course, the beliefs were again tested out as indicated on page 8-9.

Goal: The creation of a basic test (status) as a representation of the energetic development of the test person for all further BESA tests. To test the beliefs in order to control possible changes in the bioenergetic system of the subject.

BESA Test evaluation P71 4.1

from **14-02-2021 at 20:06 – 20:18** (12 Minutes) page 33 and 34

Result: The measurement result indicated a significant improvement of the energetic situation at the meridian end points and subsequently on the subordinate metabolic situation of the test person compared to the BESA 2 test BASIC.

100 % in the green area

Conclusion: As the BESA graphs and the pie chart show, all measured values are now in the optimal, green range.

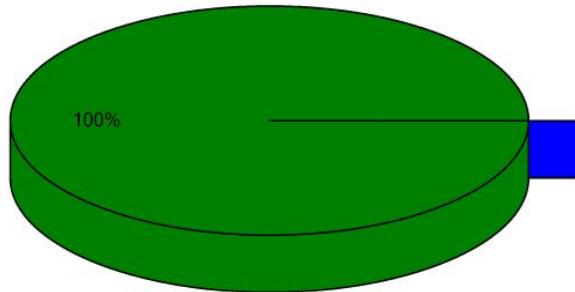
BESA testing against the originally tested beliefs of 10/31/2020 revealed the following situation or change:

- Creativity arises through inner pressure
- The breach of trust, the stab in the heart

The BESA testing of the beliefs showed that of the 8 beliefs tested on 10/31/2020, only 2 beliefs were left as of 01/31/2021. This means that by using the "Leela Quantum H.E.A.L.-Capsule" after a little more than 5 months 95 % of the burdening beliefs could be removed.



Overview of BESA measuring



- Red: values with indicator decline
Decline greater than 2 ()
- Yellow: high values without indicator decline
Values over 70 ()
- Blue: low values
Values lower 50 ()
- Green: standard values
Values between 50 and 70 (100%)

BESA basic test

- +++ : Indicator decline > 15 Skt.
- ++ : Indicator decline 6-15 Skt.
- + : Indicator decline 3-5 Skt.

T: Total inflammation (>89 Skt.)
 P: Partial inflammation (70-89 Skt.)

D: Degeneration (< 50 Skt.)

Standard values: (50-70 Skt.)

Element: lu - sk - li - ct

0	10	20	30	40	50	60	70	80	90	100		Right	Left
											Lung		
											Lu 1 (11.) Parenchym	59/0	61/2
											Skin		
											Sk 1 (1.) Lower Body	57/0	53/1
											Large intestine		
											Li 1 (1.) Colon transv./sigm.	56/1	59/0
											Connective tissue		
											Ct 1 (1.) Abdomen	51/1	53/0

Element: st - nd - ps - od

0	10	20	30	40	50	60	70	80	90	100		Right	Left
											Stomach		
											St 1 (45.) Pylorus/body	54/0	53/0
											Nerves deg.		
											Nd 1 (1.) lumb./sakral.	55/1	52/1
											Pancreas-spleen		
											Ps 1 (1.) Eiw./w.Pulpa	57/1	58/0
											Organ deg.		
											Od 1 (1.) Abdominal region	56/0	54/0

Element: bl - ly - ki - al

0	10	20	30	40	50	60	70	80	90	100		Right	Left
											Bladder		
											BL 1 (67.) body	51/0	53/1



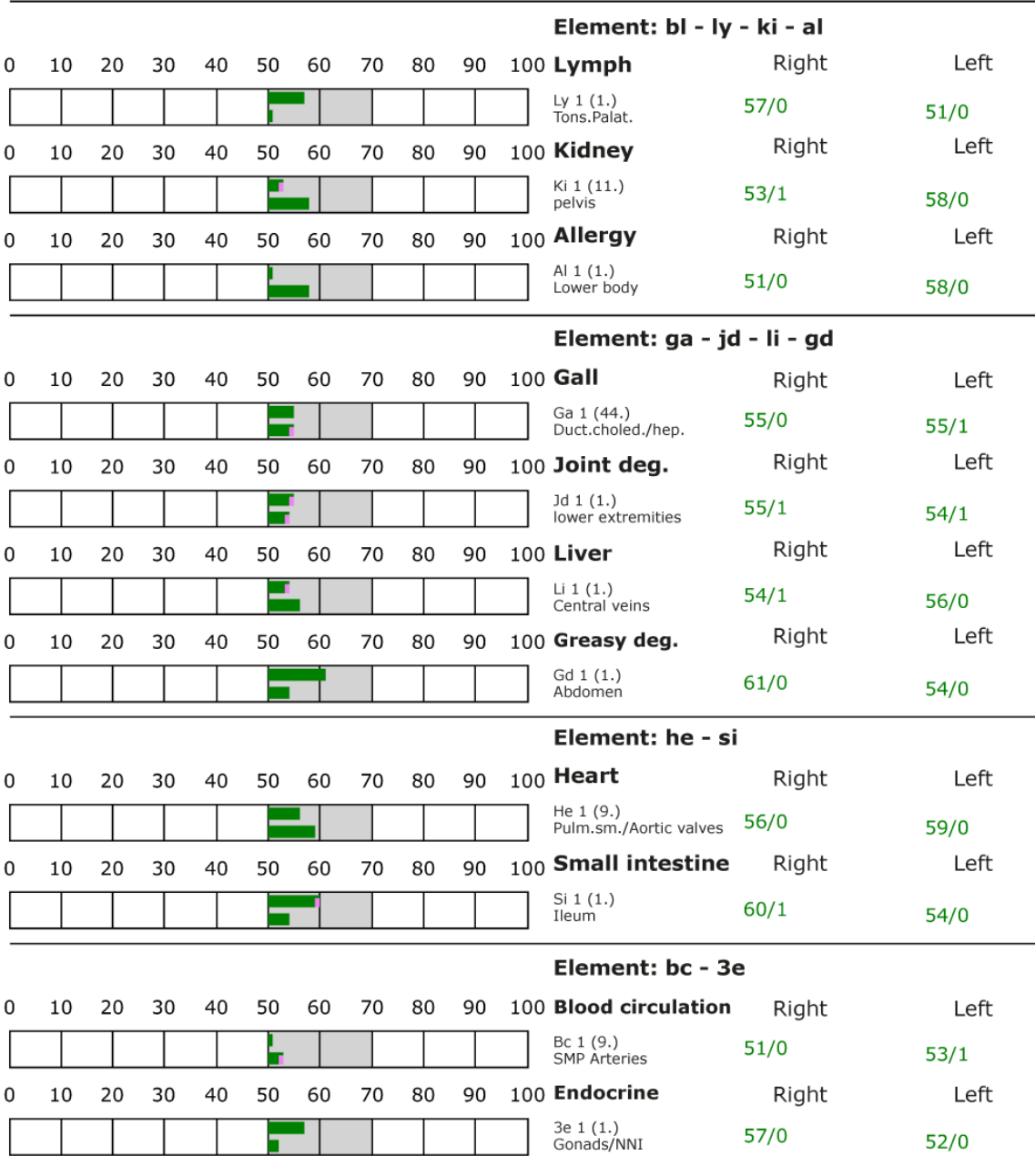
BESA basic test

+++ : Indicator decline > 15 Skt.
 ++ : Indicator decline 6-15 Skt.
 + : Indicator decline 3-5 Skt.

T: Total inflammation (>89 Skt.)
 P: Partial inflammation (70-89 Skt.)

D: Degeneration (< 50 Skt.)

Standard values: (50-70 Skt.)



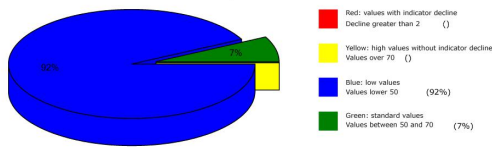


All BESA-tests at a glance

Proband 1

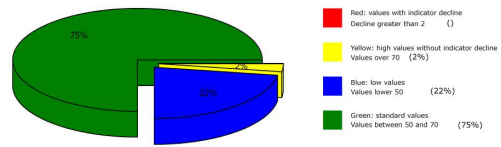
BESA Basic Testing BEFORE

Overview of BESA measuring



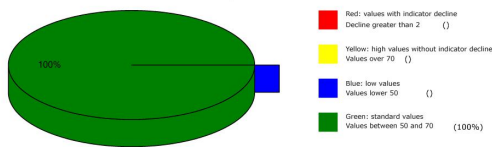
BESA 2 Testing AFTER without test object

Overview of BESA measuring



BESA 3 Testing AFTER without test object

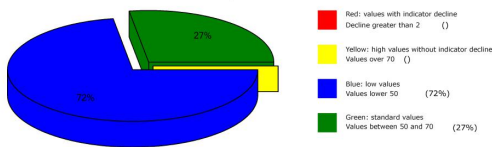
Overview of BESA measuring



Proband 2

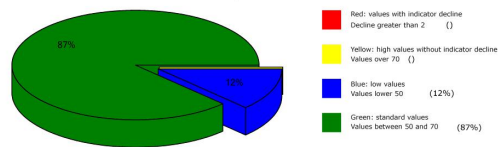
BESA Basic Testing BEFORE

Overview of BESA measuring



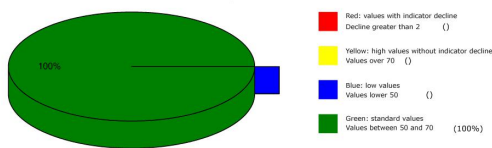
BESA 2 Testing AFTER without test object

Overview of BESA measuring



BESA 3 Testing AFTER without test object

Overview of BESA measuring





General information about the test result

Human beings or all biological objects represent a kind of receiving antenna for environmental information. This is because the life of man and all other biological objects depends fundamentally and exclusively on environmental information. Our organism is biologically very sensitive where natural information (fields) are located or where they are subject to interactions and fluctuations. **For this reason, detected informative electromagnetic interference fields are biologically highly relevant. Any reduction or transformation of these interfering fields (ideally to 100 percent) is biologically very important, often even decisive for life.**

These informational disturbances from our environment are only compatible with life if they can be readjusted to a natural fluctuation tolerance. Disturbances, problems, blockades, disharmonies in the biological control circuit of man find their causes in such disturbing information influences.

Neutralizing or harmonizing effects could be proven in this detailed project P71 4.1 to determine the effect of the "Leela Quantum H.E.A.L.-Capsule". The "Leela Quantum H.E.A.L.-Capsule" was able to neutralize the biological adverse effects and effects observed on the test subjects even under the influence of test ampoules of pathological content.

The significant ability of the "Leela Quantum H.E.A.L.-Capsule" to neutralize and harmonize the pathological stress factors tested in this detailed project P71 4.1 as beliefs and their transformation into biological life-promoting goodness is proven by this project.

Authorized Summary

The BESA tests carried out by IFVBESA on the energetic and physical effectiveness of the "Leela Quantum H.E.A.L.-Capsule" have clearly shown that it is able to neutralize or harmonize the biologically significant stress factors from the beliefs (imprints) in the meridians or at the acupuncture points of the test persons after a long-term application of more than 5 months. The "Leela Quantum H.E.A.L.-Capsule" was worn on the body by the subjects for about 12-14 hours during the day during the project. By means of the bioenergetic system analysis, the effect of the mentioned stress factors on the test persons, their energy systems and their biological control circuits was questioned and systemically tested on the energetic level. The BESA tests BEFORE - AFTER show significant changes at the tested acupuncture points on the meridian system of the test persons. The measured data as well as their key figures impressively confirm on the one hand the stresses that the tested factors have on the human organism, and on the other hand they clarify how after the application of the "Leela Quantum H.E.A.L.-Capsule" the deregulating energies are transformed into body-immanent and biocompatible energies. From a holistic point of view, it may be assumed that the positive effect on the test persons also occurs in other people. That the positive influence by the "Leela



Internationaler Fachverband für BESA | ZVR Nr. 975047937
Hauptstraße 1, A 4861 Kammer-Schörfling am Attersee | Österreich - Austria
Tel.: +43 – 664 – 73152899 | E-Mail: info@ifybesa.at

Quantum H.E.A.L.-Capsule" is actually possible with high precision is clearly shown by this test through the BESA-PRE-AFTER-AFTER comparison. All measured values improved significantly from the mostly 100-percent blue measuring range to the green mostly 50-second range (scale value), i.e. the range of optimal measured values. This means: an optimal regulation dynamic has taken place.

Result: The subjects were exposed to severe stressful information by test ampoules of pathological content during the BESA-AFTER testing. In contrast to the BEFORE testing, in which the "Leela Quantum H.E.A.L.-Capsule" was not used, consistently positive measurement results were found, indicating that neutralization or harmonization had taken place. The regulation dynamics developed into an optimal effective range.

By proving the energetic effectiveness of the "Leela Quantum H.E.A.L.-Capsule" in the long-term project P71 4.1, the requirements for obtaining a BESA seal of approval with 5 stars were confirmed by the International Professional Association for BESA.