



## **What is Quantum Energy & How does it work?**

Quantum Energy is essential for life. Every unit of matter contains quantum energy, and so do our cells. This means that every person has a quantum energy field and is constantly interacting with other quantum energy fields. Inside our bodies the cells communicate via these quantum fields.

Just like other bodily systems, your quantum energy field can become disrupted from many different things such as toxicity, malnourishment, and stress of any kind. In today's world, we are constantly bombarded with EMF, harmful substances, and stress. This is why we develop and test our products with the intention to help mitigate the harmful effects, activate the body's self-healing powers and strengthen our quantum energy field.

## **Studies & Research**

Our products have been studied, tested, and certified by six independent institutes and doctor's practices in the USA, Asia and Europe. Now we will briefly go over the summaries and results from the third-party tests of our products. Please note that this is certainly just an extract of the hundreds of pages of studies that have been done. We do want to mention that 100% of the studies came back with significant and positive results. If you want a more in-depth look at the studies please go to [leelaQ.com/research-seal-of-approval](http://leelaQ.com/research-seal-of-approval)

## **Darkfield Microscopy**

### **What is a Darkfield Microscopy test?**

A Darkfield Microscopy is a blood test in which a drop of blood is taken and looked at immediately using a special form of lighting that allows to see living cells without staining. It provides a look at overall health, microorganisms may be detected, distortions of red blood cells (can reflect nutritional status), and possibly undesirable bacterial or fungal life.

### **What can Darkfield Microscopy tell you?**

Interpretation of the Darkfield can detect early signs of illness from the forms on the slide. Specifically, Darkfield Microscopy reveals distortions of red blood cells, possible



undesirable bacterial/fungal/parasitic life forms, inflammation, and immune activity. The general pattern of findings is most revealing of a person's imbalances. Certain findings or combinations of findings may indicate: nutritional deficiency (vitamins/minerals), digestive disorders, infections, hormonal imbalances, immune dysfunction, environmental toxicity, internal toxicity, and/or altered blood pH. The findings in the blood can be seen early in diseases/conditions, sometimes before symptoms appear or

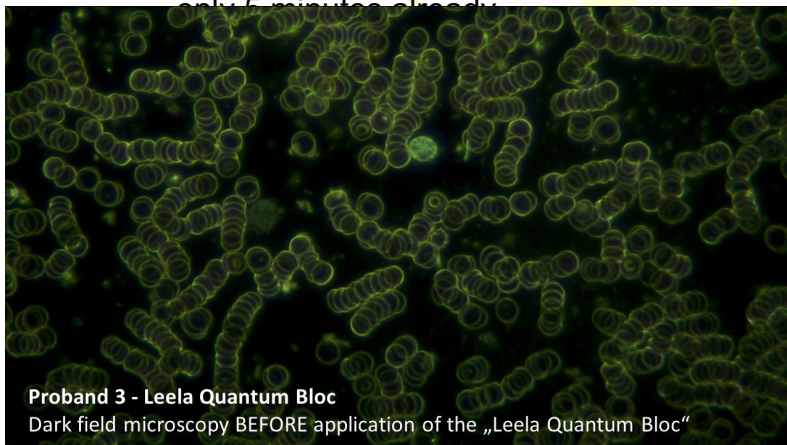
before the disease is diagnosable. Early intervention and changes in health habits can alter the course of a person's health. Darkfield testing can be used to reassess for changes after treatments and/or changes in lifestyle are implemented to monitor progress as well.

### Darkfield Microscopy Study #1

An Austrian Doctor who studies blood with a darkfield microscope tested our products by viewing a person's blood before and after being exposed to our products. The goal of the study is to see the effect on a person's blood when using our products. In this specific trial, the test subject had his blood studied before and after placing his hand in the Leela Quantum Bloc for 5 minutes. See the results on the next page.

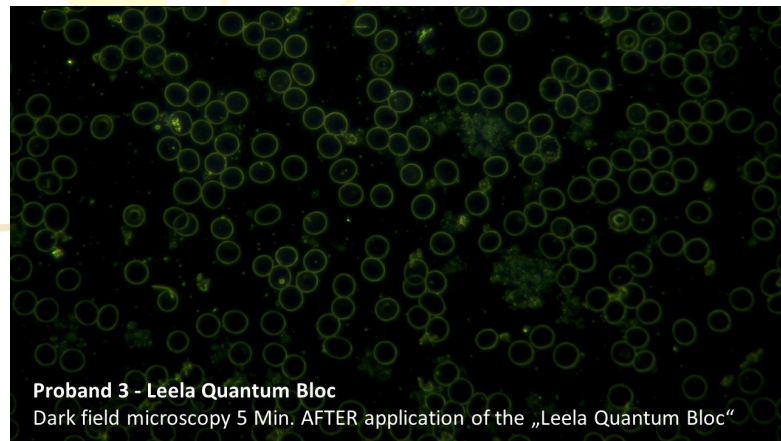
### The Results

In all of the tests, like in this specific example, the difference in the blood images is easily noticeable. In the pictures below you can see that the "Before" blood had a disorganized, clumped, and restricted look which indicates a higher risk of stroke, heart attack, and heart disease. There is a significant change in the "After" blood which looks very healthy, free, and vibrant. Again, this significant positive change happened after only 5 minutes of use.



Proband 3 - Leela Quantum Bloc  
Dark field microscopy BEFORE application of the „Leela Quantum Bloc“

**Before**



Proband 3 - Leela Quantum Bloc  
Dark field microscopy 5 Min. AFTER application of the „Leela Quantum Bloc“

**After**

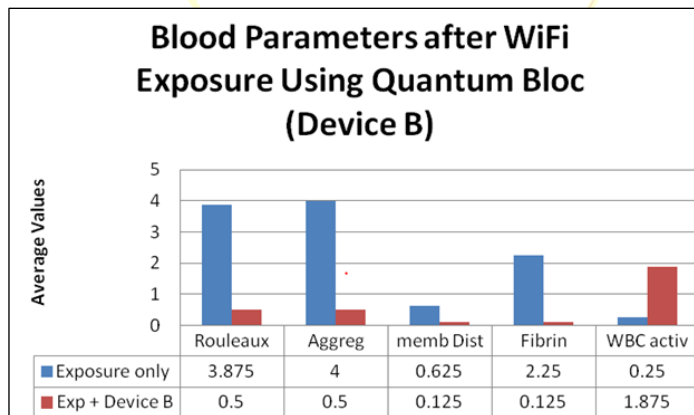
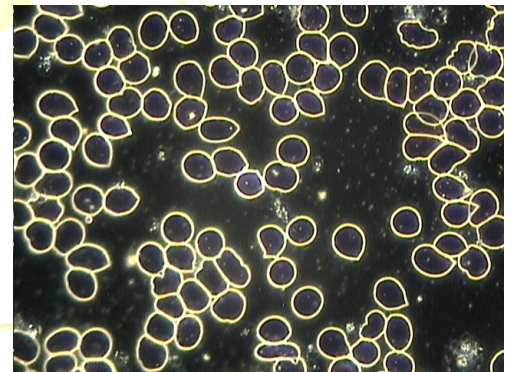
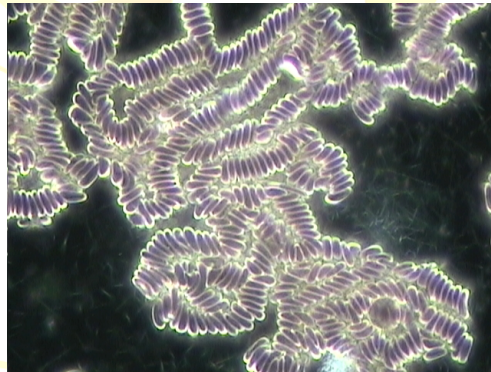
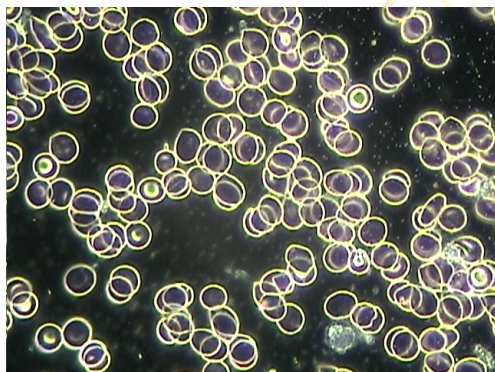


## Darkfield Microscopy Study #2

Darkfield Microscopy is great at showing immediate effects on the blood so we decided to have a randomized, double-blind, sham-controlled study done by highly regarded Dr. Beverly Rubik in the US. The goal of this study was to see if the Leela Quantum Bloc has effects on the blood and if it can protect users from short-term EMF exposure (wifi, specifically). In this study we used four subjects who had their blood tested three times: baseline, after 10 minutes of wifi exposure, and after 10 minutes of wifi exposure WITH their hands in the Quantum Bloc OR sham device. A specific scale was used to quantify the blood's size, shape, variability, stickiness, motility, and amount of white blood cells.

### The Results

The baseline blood test revealed that all test subjects had healthy blood. All test persons also showed adverse blood changes due to wifi exposure. For the final blood test, the results were clear that the Quantum Bloc provided 100% mitigation from the wifi exposure. At the end of the study we found out that the sham device was also partly quantum-charged by accident. Below you can see pictures of a test person's blood and a graph that shows the mitigating effects.



Results of Wifi Exposure versus wifi exposure w/ the Quantum Bloc



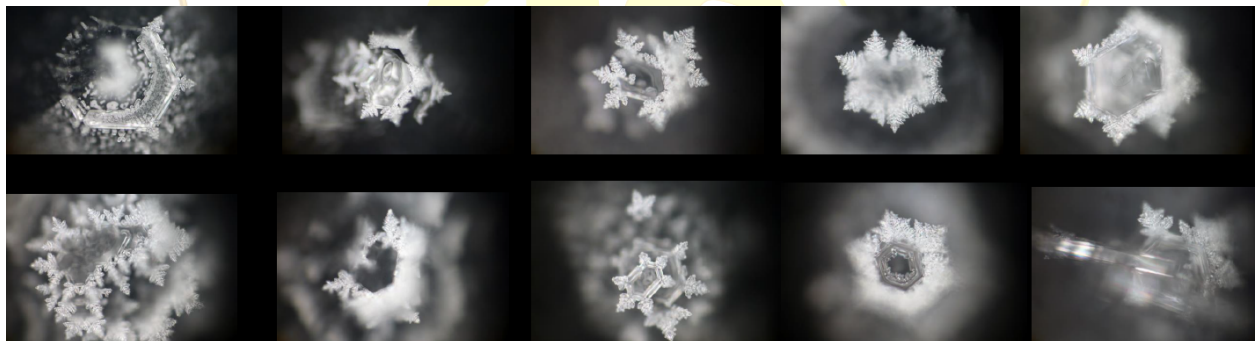
## Emoto Water Research

### Who is Dr. Emoto?

Dr. Masaru Emoto was a famous Japanese Scientist who proved that our thoughts and intentions can affect physical matter through his experiments with water. He studied water and how it physically changes when exposed to human sound, thoughts, and intentions. Dr. Emoto found that water exposed to positive intentions would form more “perfect” crystals when frozen and water exposed to negative intentions would form random crystals. Similarly, water from a clean, natural source will have more perfect crystals than a polluted water source. His legacy continues through his son, Hiro Emoto, and the Emoto Institute Japan.

### The Study

The Emoto Institute Japan tested the Leela Quantum Tech to study and visualize their effect on water. The products used for the study are the Quantum Bloc and the Quantum Bottle. To visualize the changes in the water, it is frozen and photographed under a microscope. Three separate samples were studied and photographed (see next page):



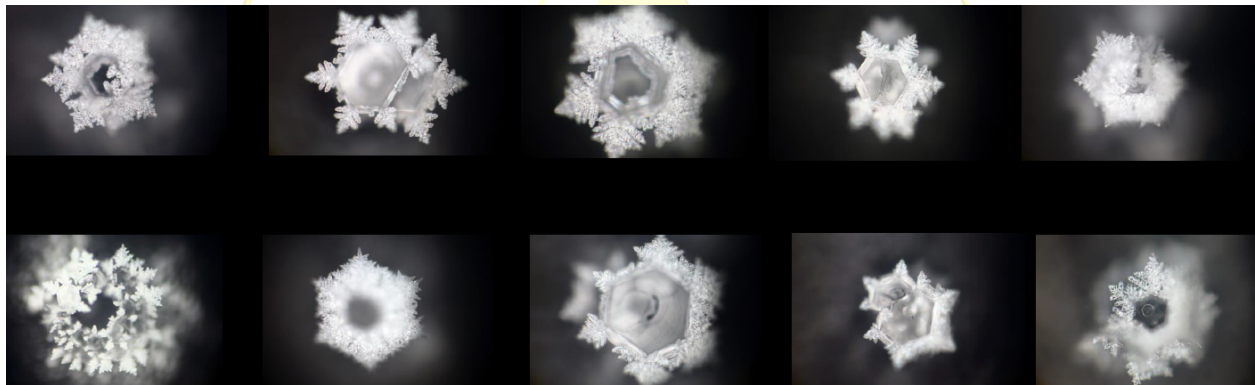
Control Sample



LEELA QUANTUM TECH<sup>®</sup>



**Distilled water after being in Leela Quantum Bottle for 10 minutes**



**Distilled water after being in Leela Quantum Bloc for 3 minutes.**

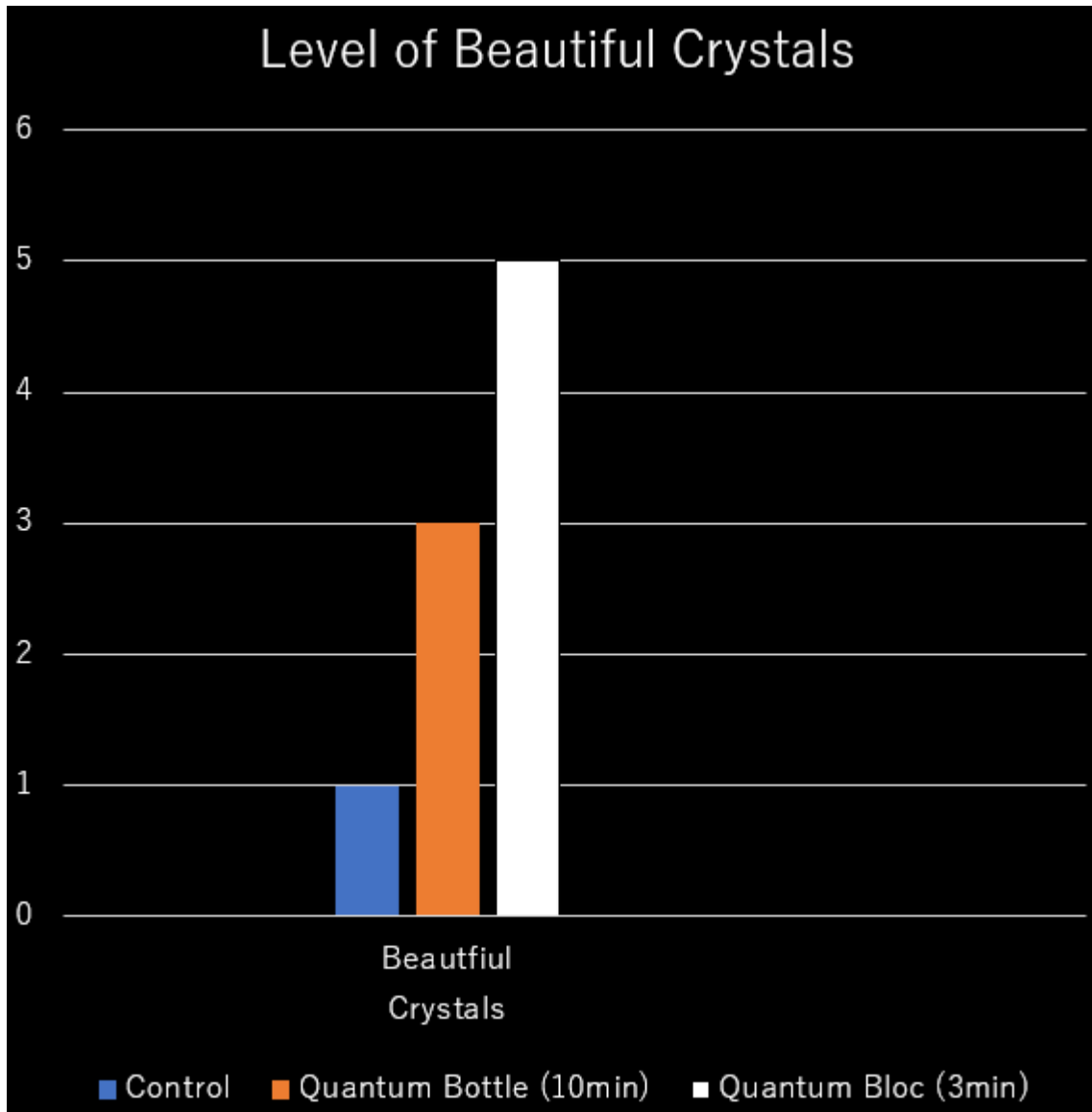
### **The Results**

This is what Hiro Emoto, the Head of the Emoto Institute wrote:

“The Leela Quantum Bloc improved the energy of water significantly within only 3 minutes. From only one beautiful crystal in the control water the treated water then had five beautiful crystals.

The Leela Quantum Water Bottle also optimized the water. In 10 minutes, it changed from one beautiful crystal to three beautiful crystals.”

The Emoto Institute Japan confirms that the Leela Quantum Tech products significantly improve the structure and energy of water.





LEELA QUANTUM TECH<sup>®</sup>



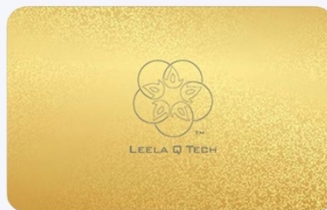
**30% DISCOUNT CODE**

valid for any Leela Quantum Frequency Card

**Get your Frequency Card(s) now**

<https://leelaq.com/product/leela-quantum-frequency-cards/>

**CHOOSE BETWEEN 21 DIFFERENT  
AND INDIVIDUAL FREQUENCIES**



**COUPON CODE: theevent30**

**VALID UNTIL January 15, 2022**



LEELA QUANTUM TECH<sup>®</sup>

## What is Leela Quantum Tech?

We are a small company that researches and develops quantum energy products with the mission to bring more energy and vitality to people's lives. Our products are third-party tested and verified to have many benefits for humans, animals, and plants. We offer a range of products such as clothing, pet accessories, and specific frequency cards. The extension of the actual technology we've developed we also make available in the form of the so called Quantum Blocs and Infinity Blocs. Learn more at [leelaQ.com](http://leelaQ.com).



### Disclaimer

Statements made in this document have not been evaluated by the Food and Drug Administration or any Governmental derivatives thereof. Leela Quantum Tech products are not intended to diagnose, treat, cure or prevent any disease or health condition.