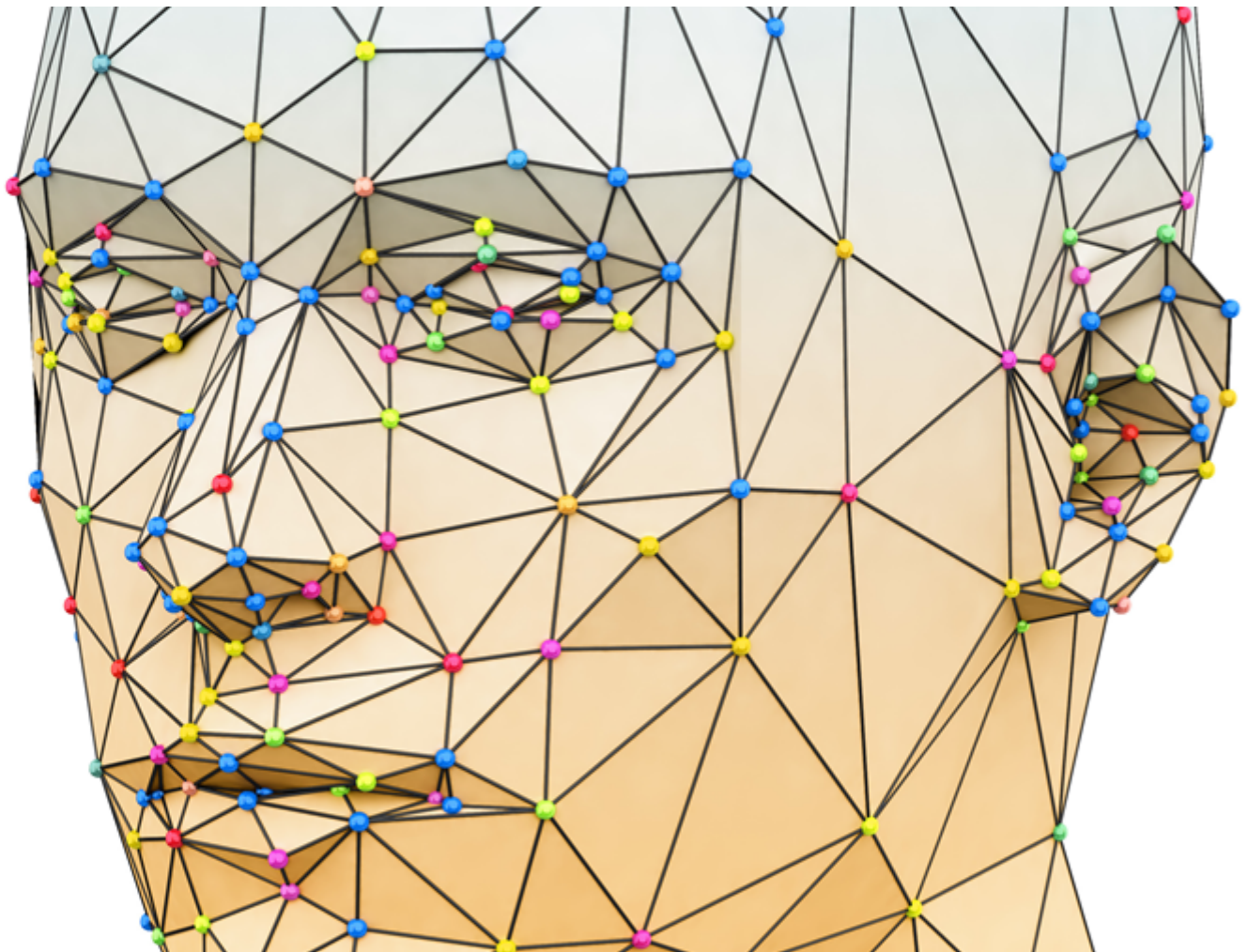




Internationaler Fachverband für BESA ■ ZVR Nr. 975047937  
Hauptstraße 1, A 4861 Kammer-Schörfling am Attersee ■ Österreich - Austria  
Tel.: +43 – 664 – 73152899 | E-Mail: [info@ifvbesa.at](mailto:info@ifvbesa.at)

# IFVBESA

## Information is crucial



### P73 1.0 BESA-Detail project

EMSF electromagnetic interference fields

### Leela Quantum Jacket





Internationaler Fachverband für BESA ■ ZVR Nr. 975047937  
Hauptstraße 1, A 4861 Kammer-Schörfling am Attersee ■ Österreich - Austria  
Tel.: +43 – 664 – 73152899 | E-Mail: [info@ifvbesa.at](mailto:info@ifvbesa.at)

# **Project P73 1.0 to BESA expert opinion**

## **BioEnergetic System Analysis**

within the framework of the BESA seal of approval on the effectiveness  
of the product „Leela Quantum Jacket“  
for electromagnetic interference fields  
also referred to as "test object" in the project.



Internationaler Fachverband für BESA ■ ZVR Nr. 975047937  
Hauptstraße 1, A 4861 Kammer-Schörfling am Attersee ■ Österreich - Austria  
Tel.: +43 – 664 – 73152899 | E-Mail: [info@ifvbesa.at](mailto:info@ifvbesa.at)

## **Client**

Firma Leela Quantum Tech, LLC  
Attn: Eleonora Goldenberg  
1421 LUISA STREET, STE G  
SANTA FEE, NM 87505  
USA

## **Project participants:**

**Project leader:** Wolfgang Hans Albrecht, president and scientific director of the IFVBESA

**Test person:** Eva Krankl, Vice president and deputy scientific director of the IFVBESA

**Respondent:** 8 anonymous subjects in the (Detail) Projects P73 1.0, P73 2.0, P73 3.0 and P73 4.0.

These break down as follows:

**- 2 Respondent at P73 1.0 - EMSF**

- 2 Respondent at P73 2.0 - for environmental pollution

- 2 Respondent at P73 3.0 – for cytokines as inflammatory factors

- 2 Respondents at P73 4.0 - for hypoglycemia, nitrostress and oxidative stress

**other participants:** none

## **Project location:**

Location of the IFVBESA, Hauptstraße 1, A 4861 Kammer/Schörfling

**Date:** 04.01.2020 until 12.02.2021

**Project duration:** 39 Days



## Contents

<b>BESA-legend for the interpretation of the BESA measurement results</b>	5
Basics of the research project creation P73	6
Research funding services of the IFVBESA - BESA- reference tests	6
Research project description (detailed project)	7
Test procedure	9
<b>All BESA tests at a glance</b>	28
General information about the test result	29
Autorized Summary	29

### Important notes:

The client owns the right to exploit this project report. Irrespective of this, this report represents intellectual property of IFVBESA as the contractor. The contractor is entitled to use this project report for other purposes if this does not violate the client's data protection or confidentiality. On the other hand, the project report, with the exception of the "authorized abridged version", may not be changed or passed on in abridged form without the consent of the IFVBESA. The order for this project refers to bioenergetically measurable values and their interpretation according to the guidelines of BESA or the IFVBESA. The maintenance of the quality of the tested products as well as their regular control is the task and responsibility of the client. Investigation of the manufacture, mechanism of action or interpretations of the Client's products to third parties is not the responsibility or task of the Contractor. Video recordings may be made only with the permission of IFVBESA.



## BESA-legend for the interpretation of the BESA measurement results

The measured value of 50 on the tested meridian represents an optimal energetic state in this organ or its subordinate and superordinate levels. Measured values in the range of 50 to max. 70 still count as a neutral and balanced energy status. The organism is able to regulate irritations of the system (wrong environmental signals) very well.

Measured values above 70 to 100 represent the inflammatory range or a so-called energy surplus as a reaction to the irritations of the system by corresponding environmental signals. After reaching the maximum values, the energy state tips into the degenerative (blue) range.

Measured values from below 50 to around 0 represent the so-called degenerative measuring range or a lack of energy as a reaction to the stimulation of the system by corresponding environmental signals.

Measured values represented by a so-called pointer drop of more than 3 scale lines indicate total deregulation. The influence of certain environmental signals then leads to such strong system overloads, which can only be brought into harmonization by corresponding new signals.

### BESA key figures:

<b>up to 0.79</b>	very deep energetic regulatory disorder (SSD) energy deficiency
<b>0.8 to 1.19</b>	strong energetic regulation disturbance (SD) degeneration/energy deficiency
<b>1.2 to 1.59</b>	energetic regulation disorder (D) degeneration/energy deficiency
<b>1.6 to 1.99</b>	degenerative transition area (DÜ)
<b>2.0 to 2.39</b>	optimal regulation (OR)
<b>2.4 to 2.79</b>	in the regulation (R)
<b>2.8 to 3.19</b>	partial inflammation = regional energy excess (PE)
<b>from 3.2</b>	total inflammation = strong general energy surplus (TE)



## Basics of the research project creation P73

The international professional association for bioenergetic system analysis was commissioned by the company Leela Quantum Tech LLC to test or prove the effect of the test object "Leela Quantum Jacket" by means of bioenergetic system analysis (BESA). The testing took place independently of the subjective feeling of all test persons.

### **Description of the "Leela Quantum Bloc" by the client:**

The "Leela Quantum Jacket" works:

1. through the silver in the material (high percentage of silver fibers).
  - It is proven to block over 99 % of electromagnetic radiation
  - It is over 99.5 % antibacterial, antiviral, antimicrobial and antifungal. This means that bacteria, viruses, etc. - once they come into contact with the Quantum T-shirt, cannot survive there.
  - By the just mentioned function, the "Leela Quantum Jacket" reduces and eliminates odors (sweaty T-shirt, etc.).
2. due to the quantum energy injected in the whole material, especially in the silver, the wearer also has the following advantages
  - more energy
  - harmonization of electrosmog also related to the whole body
  - positive effect on organ functions
  - etc.

By wearing the "Leela Quantum Jacket" the quantum energy can be made available to the human body and thus to the energy system in a quasi-bioavailable way.

## Research funding services of the IFVBESA - BESA- reference tests

General information about this project:

Although the "Leela Quantum Jacket" is primarily worn outdoors, it was important to the developer in the first step to question what effect this jacket has on the energetic system of the test person. For this reason, the effect of the jacket was tested at the beginning of this project in the laboratory of the IFVBESA. During the BESA testing, the typical EMSF of a state-of-the-art office were active. These were WLAN, smart meter, computers and monitors, and smart phone.



As already described, the **detailed project P73 1.0** was concerned with proving the effectiveness of the "Leela Quantum Jacket", especially against electromagnetic interference fields, referred to as EMSF throughout report. For this project 2 test persons were selected.

The client starts from the claim that the application of the "Leela Quantum Jacket" can neutralize the possibly negative effects EMSF on the energy system of the subjects. Thus, the "Leela Quantum Jacket" should be practically and factually capable of restoring the deregulation by EMSF thus tested to the physiological norm. This will be tested on the test subjects via this BESA project.

The "Leela Quantum Jacket" was tested according to the requirements of the client within the framework of the applicable conditions of the IFVBESA for the award of quality seals. Depending on the significance of the test results, seals of approval are awarded in 3 categories, taking into account all tests of a project.

The client and developer of the "Leela Quantum Jacket" assumes that it is capable of neutralizing the deregulations presented by the EMSF on the test subjects and replacing the associated negative states with positive states. Whether the "Leela Quantum Jacket" is able to do this is to be questioned in the following commissioned BESA tests on the test subjects.

#### To the general information of the information transfer:

The information transfer takes place from the hyperspace of the test object to the hyperspace of biological objects (humans, animals, plants). From there, the information reaches the reference space or the energy space via so-called interaction channels. This is a union of, among other things, all organs and energy forms in the biological object. There, the information of the program can dynamically materialize and thus change current states. The changes can appear in the form of neutralization or harmonization of disturbances, dissolution of problems, blockages and disharmonies.

### Research project description (detailed project)

The reason for the tests is to prove the functionality of the "Leela Quantum Jacket" by test results, which will be obtained by testing the subjects for deregulations by the EMSF to significantly prove and compare their responses without the "Leela Quantum Jacket" and with the "Leela Quantum Jacket".

- The BEFORE measurements are made without the "Leela Quantum Jacket".
- The AFTER measurements are taken after activation by the "Leela Quantum Jacket".

The question in the AFTER measurements is: "Is the "Leela Quantum Jacket" suitable and able to neutralize the so perceived negative effects of the EMSF on the subject's organism?"





The appropriately designed tests should provide information about this by comparing the preliminary measurements without the "Leela Quantum Jacket" with the test results of the follow-up measurements to be carried out using the "Leela Quantum Jacket".

The concern of the development team of the company Leela Quantum Tech LLC is to determine whether the test object, the "Leela Quantum Jacket" as noted in the product description, is suitable to neutralize the deficiency symptoms as well as the associated disturbances in the meridian system of the test person.

### Conditions:

BESA tests are performed in the premises of IFVBESA under laboratory conditions, at room temperature 20° Celsius, on natural wooden floor. The test persons are made testable before the BESA tests or the test possibilities are questioned with the respective test person.

- Pos.1** BESA Basic testing BEFORE (bioenergetic status) on all test persons
- Pos.2** BESA testing BEFORE by EMSF on 2 test persons
- Pos.3** BESA testing AFTER by EMSF in connection with the "Leela Quantum Jacket"
- Pos.4** Evaluation of the results in the detailed project as well as summary in the corresponding expert opinion according to the sample.

### Procedure and specifications for the execution

1. **BESA basic measurement of the test person** at all previously determined measurement points (TING points). This corresponds to the actual condition, so to speak. The results are precisely determined according to the BESA specifications and documented via the known BESA graphs.
2. The **test person** is brought into contact with the **respective load factors**, i.e. EMSF, depending on the project, whereby the sequence discussed with the client is regarded as the specification and is adhered to accordingly. To determine the current energy state, the measuring points mentioned under point 1 are measured in the same sequence and for the same duration during each test. The results are precisely determined according to the BESA specifications and documented via the BESA graphs.
3. **Activation of the test object**

To **activate the test object or the "Leela Quantum Jacket"**, it is put on by the test persons according to the client's instructions and thus introduced into the measurement circuit. The measuring points mentioned under point 1 are measured in the same order and for the same duration in order to determine the current energy state. The results are precisely determined according to the BESA specifications and documented via the BESA graphs.





## Test procedure

### **BESA 1 BASIC Testing BEFORE as a status**

In the first step, a basic bioenergetic test (bioenergetic status) is performed on the meridian end points (TING points) of the test person.

### **BESA 2 Testing BEFORE the EMSF**

In the further BESA test process, the effect of the EMSF is tested on the test person. The question is: How does the meridian system react? How does the energetic status change when confronted with the EMSF? What are the differences compared to the BESA 1 BASIC test BEFORE?

### **BESA 3 Testing AFTER the EMSF and the „Leela Quantum Jacket“**

In this BESA test, the EMSF from the pre-test are reactivated and tested together with the "Leela Quantum Jacket" on the test person. Now the question is: How does the meridian system of the test person react to the "Leela Quantum Jacket"?



# Proband 1

## BESA 1 Testing BASIC-BEFORE

### **BESA 1 BASIC Testing BEFORE as a status**

Eva Krankl performs a basic BESA measurement on the test person. All BESA tests are performed at the TING points (40 nail fold points on the fingers and toes).

**Goal:** The creation of a basic test (status) as a representation of the initial energetic situation for all further BESA tests.

BESA Test evaluation P73 1.0

from **11-01-2021 at 12:34 – 12:41** (7 Minutes) page 11 and 12

**Result:** The overall measurement result indicated energetic stress at the meridian endpoints and subsequently on the subordinate metabolic situation of the test person.

**92 % in the blue area**

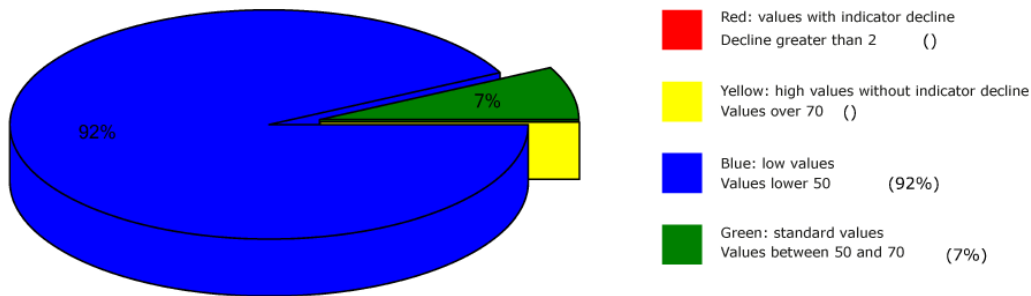
**7 % in the green area**

**1 % in the yellow transition area**

**Conclusion:** As the BESA graphs and the pie chart show, 92% of the measurement results were in the blue, degenerative range (energy deficiency). As can be seen from this BESA-BASIC test, some blue readings are just at the 50 sec mark (green and optimal reading).



## Overview of BESA measuring



## BESA basic test

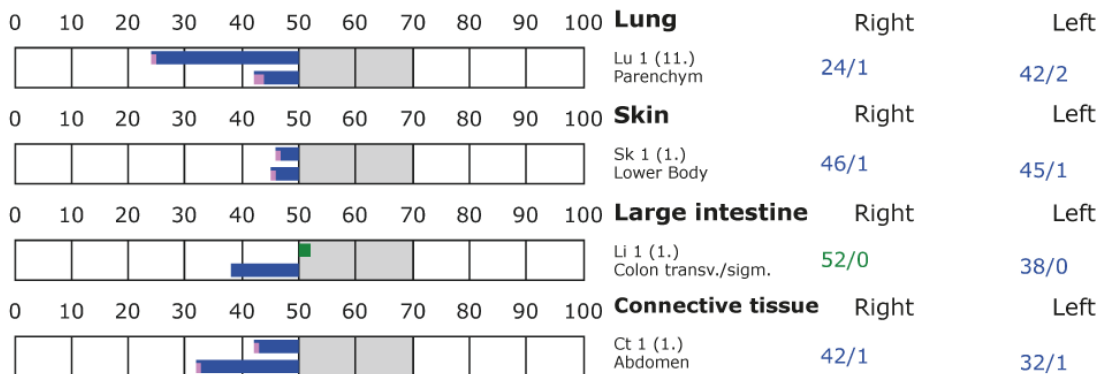
+++ : Indicator decline > 15 Skt.  
++ : Indicator decline 6-15 Skt.  
+ : Indicator decline 3-5 Skt.

T: Total inflammation (>89 Skt.)  
P: Partial inflammation (70-89 Skt.)

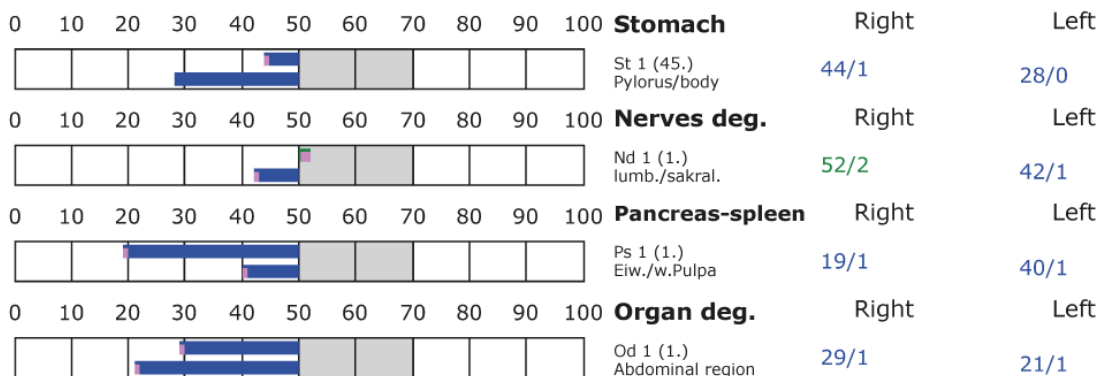
D: Degeneration (< 50 Skt.)

Standard values: (50-70 Skt.)

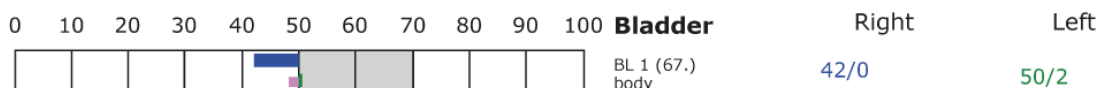
### Element: lu - sk - li - ct



### Element: st - nd - ps - od



### Element: bl - ly - ki - al





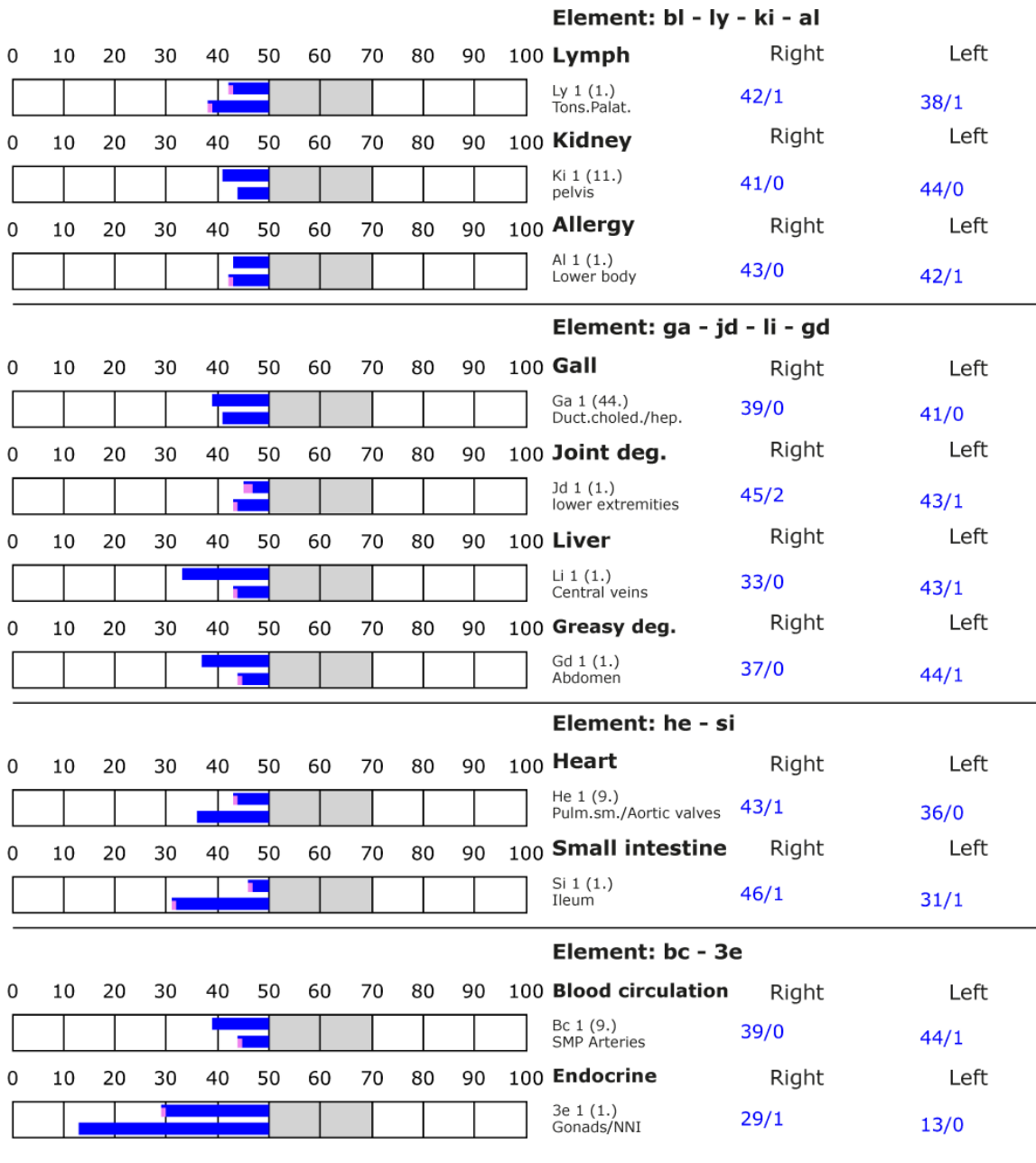
## BESA basic test

+++ : Indicator decline > 15 Skt.  
++ : Indicator decline 6-15 Skt.  
+ : Indicator decline 3-5 Skt.

T: Total inflammation (>89 Skt.)  
P: Partial inflammation (70-89 Skt.)

D: Degeneration (< 50 Skt.)

Standard values: (50-70 Skt.)





## BESA 2 Testing BEFORE

### **BESA 2 Testing BEFORE - EMSF (electromagnetic interference fields)**

In the further BESA test procedure the EMSF are activated and tested on the test person. In addition, a cell phone connection is established, the cell phone is located on one of the subject's thighs during BESA testing. All BESA tests are performed at the TING points (40 nail fold points on the fingers and toes).

**Goal:** To determine the response of the subject's meridian system within the loading factors from the EMSF. Determination of the differences compared to the BESA 1 test BASIC BEFORE.

BESA Test evaluation P73 1.0

from **11-01-2021 at 12:41 – 12:57** (16 Minutes) page 14 and 15

**Result:** The measurement result indicated heavy energetic stress at the meridian endpoints and subsequently on the subordinate metabolic situation of the test person.

**52 % in the blue area**

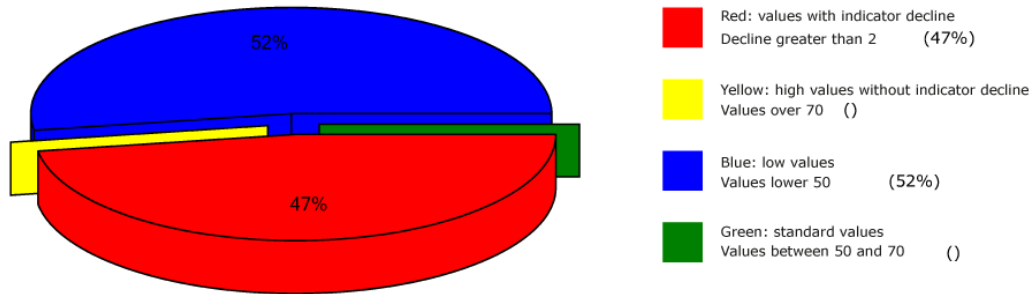
**47 % in the red area**

**1 % in the yellow transition area**

**Conclusion:** As the BESA graphs show, many measurement points are in the degenerative blue range (energy deficiency). However, the picture is dramatic due to the now many measured values in the red area. Here it is important to mention that the BESA 1 test BASIC BEFORE did not show any red measured values and the test person was not exposed to any previous stresses! This BESA test showed a significant deterioration of the subject's energetic situation compared to the BESA 1 test BASIC BEFORE. The red readings represent a total deregulation of these energy areas. This means that the energy system of the organism would seriously damage the test person in case of permanent influences of such or similar interference fields. For a balancing of these red readings or, in other words, for a neutralization of the values, the energy system needs a strong positive impulse from outside. The comparisons of the BESA graphics confirm the change and the stressing influences by the EMSF on the test person.



## Overview of BESA measuring





## BESA basic test

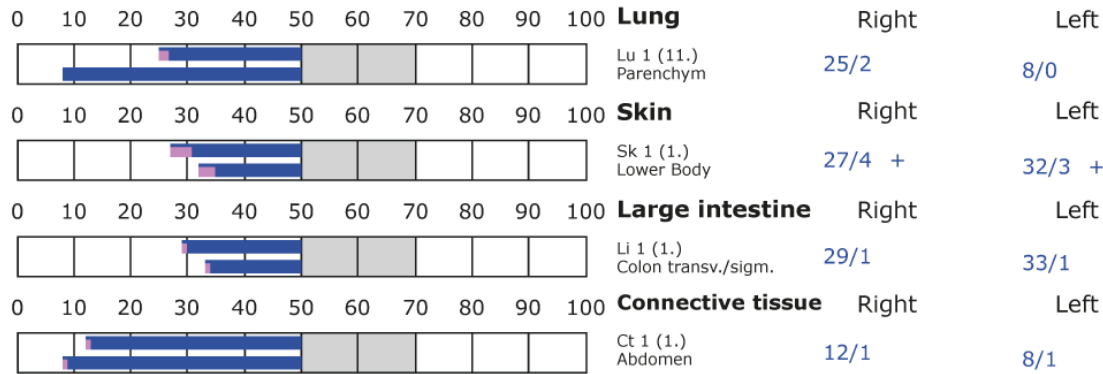
++++: Indicator decline > 15 Skt.  
++: Indicator decline 6-15 Skt.  
+: Indicator decline 3-5 Skt.

T: Total inflammation (>89 Skt.)  
P: Partial inflammation (70-89 Skt.)

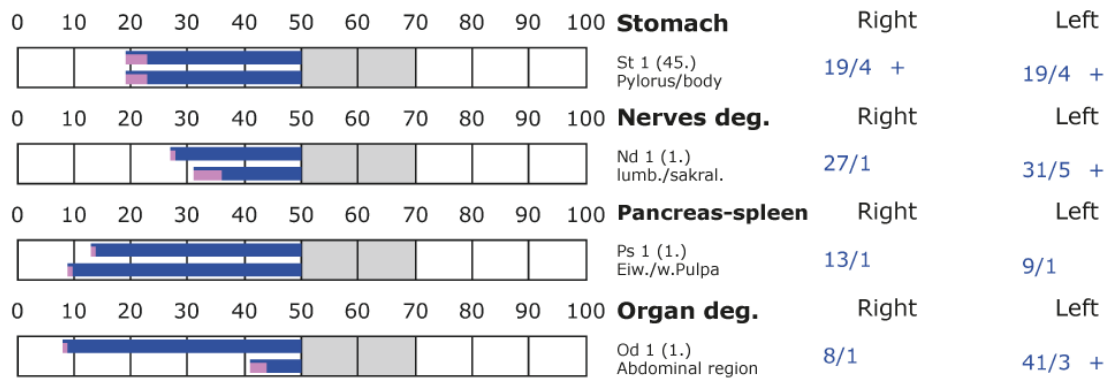
D: Degeneration (< 50 Skt.)

Standard values: (50-70 Skt.)

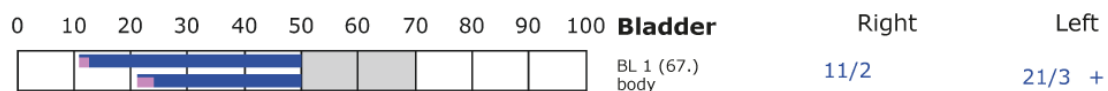
### Element: lu - sk - li - ct



### Element: st - nd - ps - od



### Element: bl - ly - ki - al







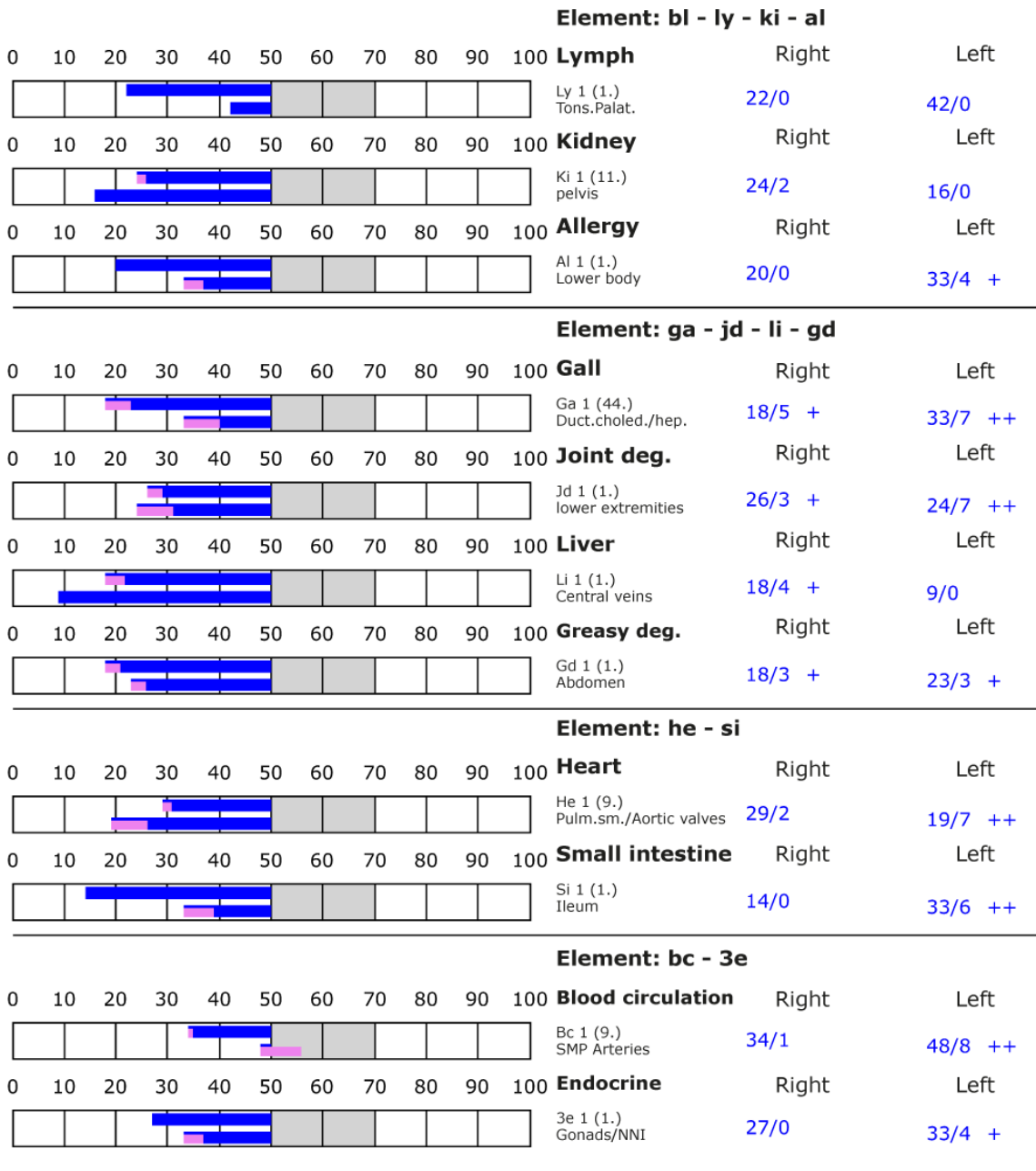
## BESA basic test

+++ : Indicator decline > 15 Skt.  
++ : Indicator decline 6-15 Skt.  
+ : Indicator decline 3-5 Skt.

T: Total inflammation (>89 Skt.)  
P: Partial inflammation (70-89 Skt.)

D: Degeneration (< 50 Skt.)

Standard values: (50-70 Skt.)





## BESA 3 Testing AFTERWARD

### **BESA 3 Testing AFTERWARD - EMSF in Combination with the „Leela Quantum Jacket“**

During the rest of the BESA test, the EMSFs are activated again and tested on the subject together with the "Leela Quantum Jacket". In addition, a cell phone connection is again established; the cell phone is again located on one of the subject's thighs during the BESA test. All BESA tests are performed at the TING points (40 nail fold points on the fingers and toes).

**Goal:** to determine the response of the subject's meridian system when the EMSFs are applied to the subject together with the "Leela Quantum Jacket". To determine the differences compared to the BESA 1 and BESA 2 tests BEFORE.

BESA Test evaluation P73 1.0

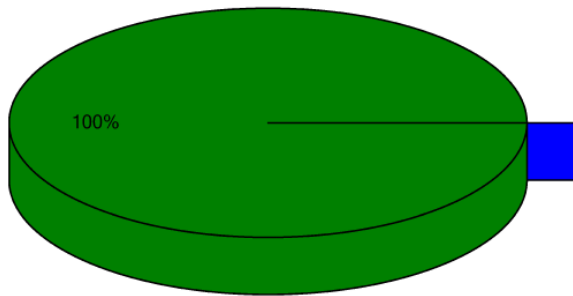
from **11-01-2021 at 13:05 – 13:10** (5 Minutes) page 17 and 18

**Result:** The measurement result shows significant improvements at the meridian endpoints or at the energetic state of the test person.

**100 % in the green area**

**Conclusion:** As the BESA graphs show, after testing the "Leela Quantum Jacket" all measurement points were in the green, optimal and neutralized range (balanced energy system). The BESA testing shows a significant improvement of the energy situation in the meridian system of the test person compared to the BESA 1 and especially the BESA 2 tests BEFORE. It is shown that the "Leela Quantum Jacket" is able to give a necessary impulse to the red readings (total deregulation) detected in the BESA testing BEFORE for a harmonization (neutralization) into a life-supporting area. The comparisons of the BESA graphs confirm the change and resolution of the stressed (red) acupuncture points on the meridian system of the subject.

## Overview of BESA measuring



- |        |   |
|--------|---|
| Red    | Red: values with indicator decline<br>Decline greater than 2 (%)    |
| Yellow | Yellow: high values without indicator decline<br>Values over 70 (%) |
| Blue   | Blue: low values<br>Values lower 50 (%)                             |
| Green  | Green: standard values<br>Values between 50 and 70 (100%)           |

## BESA basic test

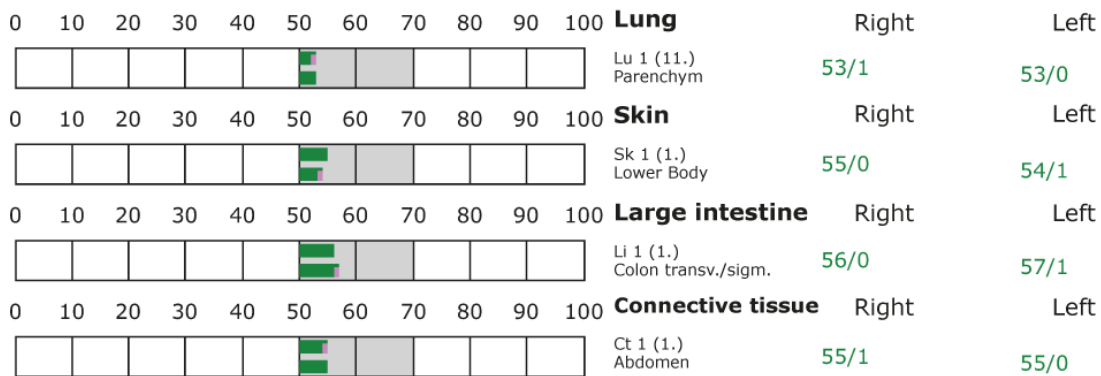
- +++ : Indicator decline > 15 Skt.
- ++ : Indicator decline 6-15 Skt.
- +: Indicator decline 3-5 Skt.

T: Total inflammation (>89 Skt.)  
P: Partial inflammation (70-89 Skt.)

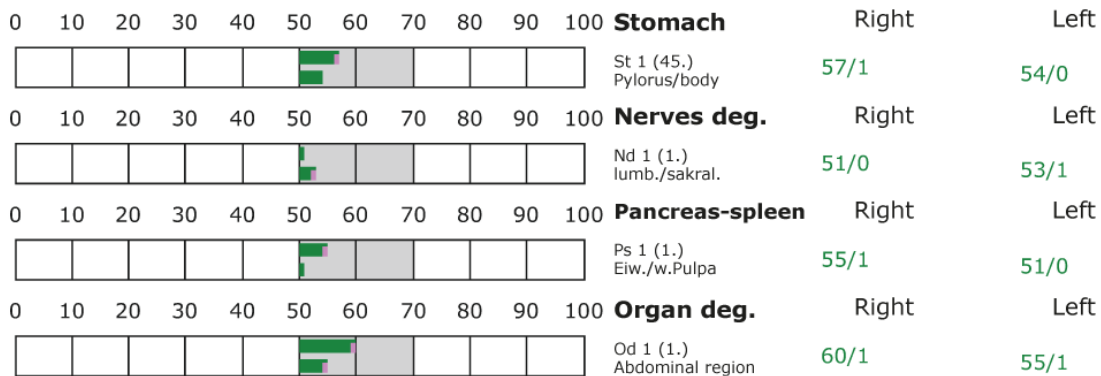
D: Degeneration (< 50 Skt.)

Standard values: (50-70 Skt.)

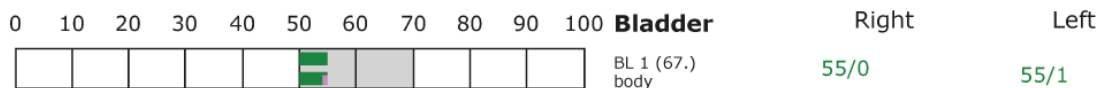
**Element: lu - sk - li - ct**



**Element: st - nd - ps - od**



**Element: bl - ly - ki - al**





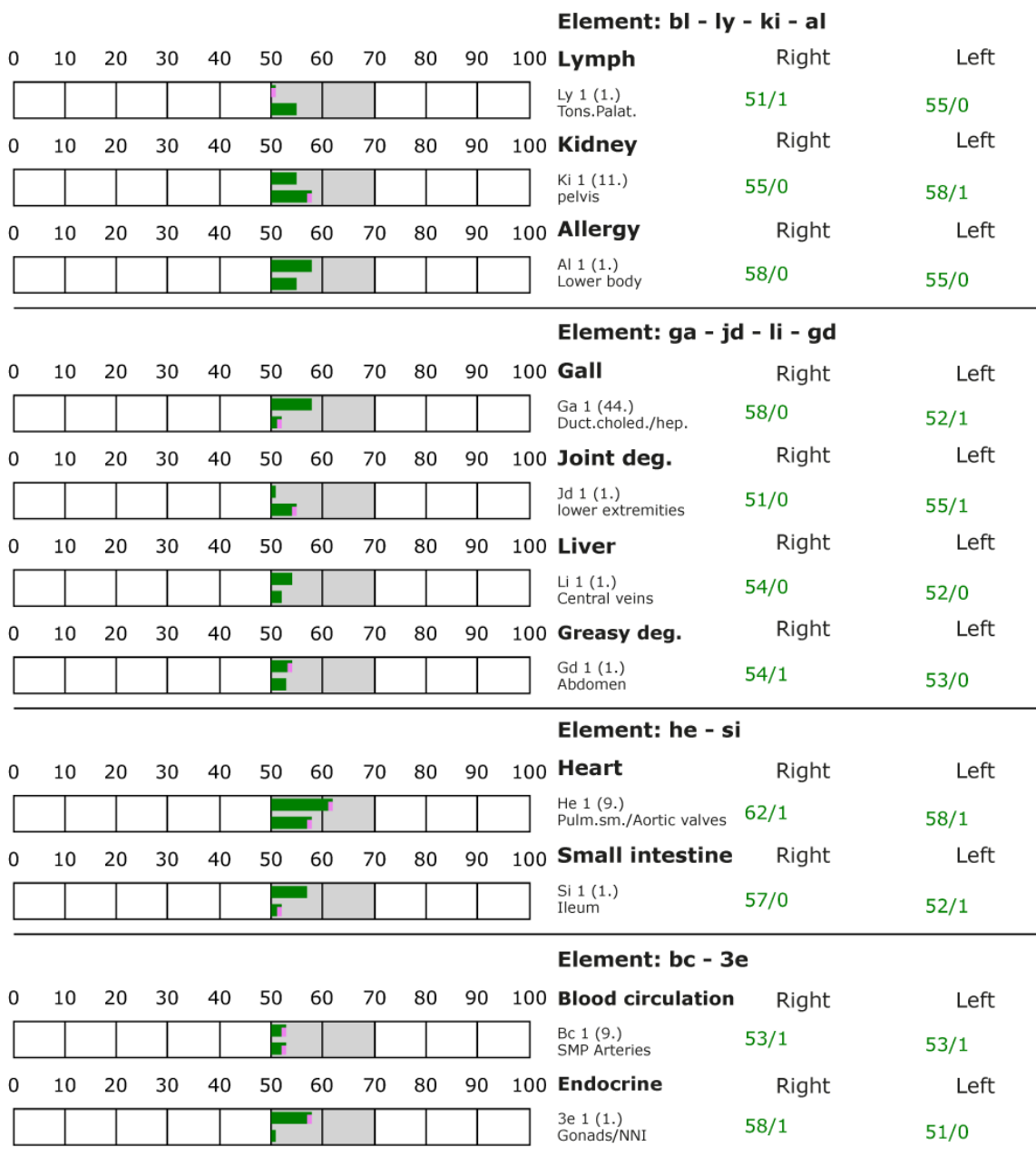
## BESA basic test

+++ : Indicator decline > 15 Skt.  
++ : Indicator decline 6-15 Skt.  
+ : Indicator decline 3-5 Skt.

T: Total inflammation (>89 Skt.)  
P: Partial inflammation (70-89 Skt.)

D: Degeneration (< 50 Skt.)

Standard values: (50-70 Skt.)





## Proband 2

### BESA 1 Testing BASIC-BEFORE

#### **BESA 1 BASIC Testing BEFORE as a status**

Eva Krankl performs a basic BESA measurement on the test person. All BESA tests are performed at the TING points (40 nail fold points on the fingers and toes).

**Goal:** The creation of a basic test (status) as a representation of the energetic initial situation for all further BESA tests.

BESA Test evaluation P73 1.0

from **11-01-2021 at 10:31 – 10:45** (8 Minutes) page 20 and 21

**Result:** The overall measurement result indicated energetic stress at the meridian endpoints and subsequently on the subordinate metabolic situation of the test person.

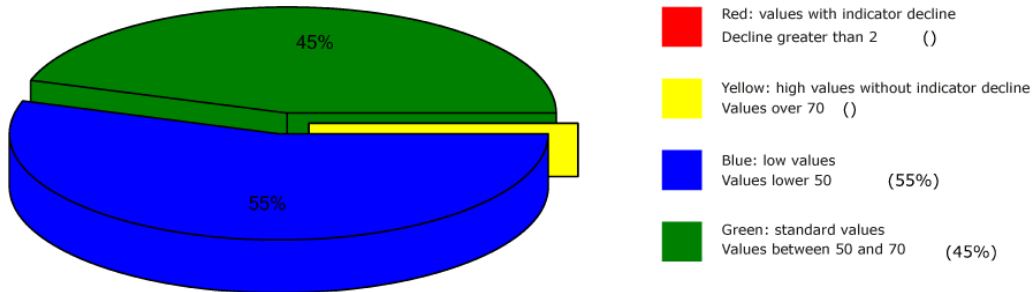
**55 % in the blue area**

**45 % in the green area**

**Conclusion:** As the BESA graphs and the pie chart show, 55 % of the measurement results were in the blue, degenerative range (energy deficiency). 45 % of the readings were in the green range (optimal range). Since almost all blue measured values were just at the 50 sct. mark (optimal measured value), one can even speak of a good BESA BASIC test.



## Overview of BESA measuring





## BESA basic test

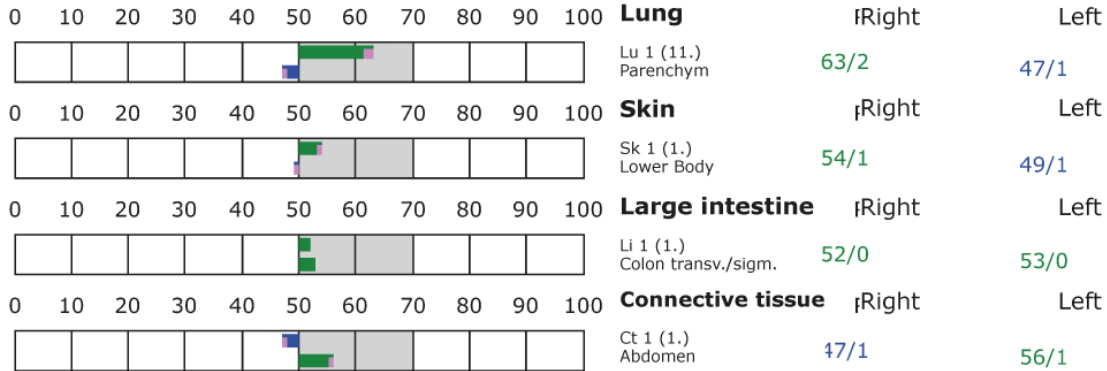
+++ : Indicator decline > 15 Skt.  
++ : Indicator decline 6-15 Skt.  
+ : Indicator decline 3-5 Skt.

T: Total inflammation (>89 Skt.)  
P: Partial inflammation (70-89 Skt.)

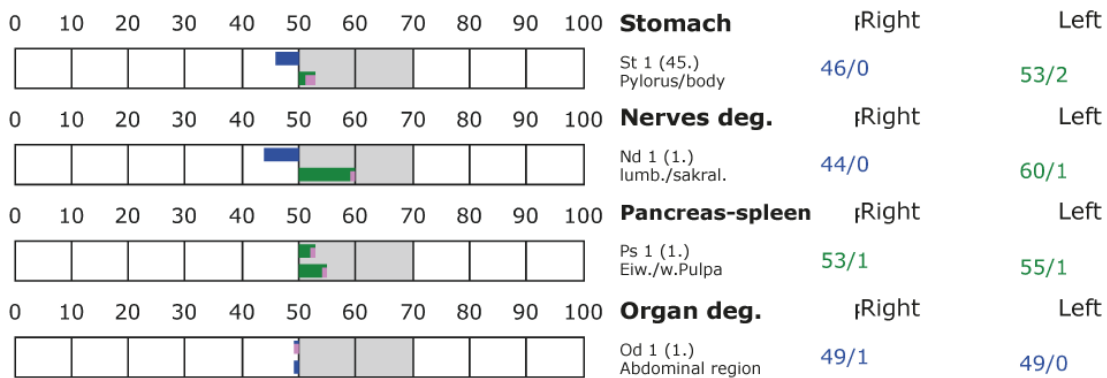
D: Degeneration (< 50 Skt.)

Standard values: (50-70 Skt.)

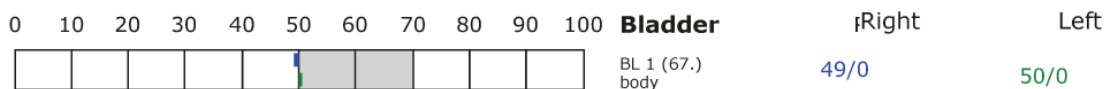
### Element: lu - sk - li - ct



### Element: st - nd - ps - od



### Element: bl - ly - ki - al







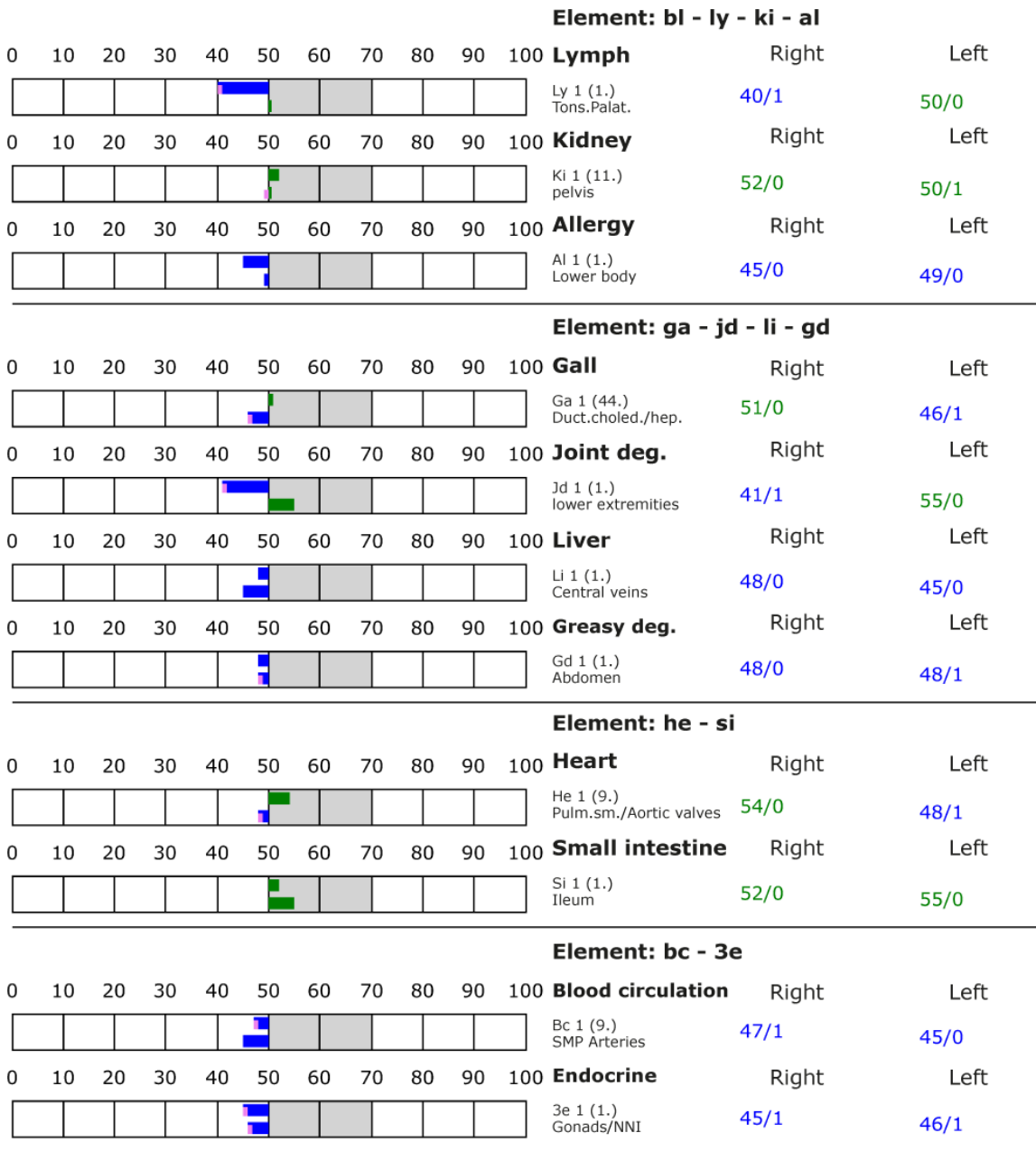
## BESA basic test

+++ : Indicator decline > 15 Skt.  
++ : Indicator decline 6-15 Skt.  
+ : Indicator decline 3-5 Skt.

T: Total inflammation (>89 Skt.)  
P: Partial inflammation (70-89 Skt.)

D: Degeneration (< 50 Skt.)

Standard values: (50-70 Skt.)





## BESA 2 Testing BEFORE

### **BESA 2 Testing BEFORE - EMSF (electromagnetic interference fields)**

In the further BESA test procedure the EMSF are activated and tested on the test person. In addition, a cell phone connection is established, the cell phone is located on one of the subject's thighs during BESA testing. All BESA tests are performed at the TING points (40 nail fold points on the fingers and toes).

**Goal:** To determine the response of the subject's meridian system within the loading factors from the EMSF. Determination of the differences compared to the BESA 1 test BASIC BEFORE.

BESA Test evaluation P73 1.0

from **11-01-2021 at 10:46 – 11:04** (18 Minutes) page 23 and 24

**Result:** The measurement result indicated heavy energetic stress at the meridian endpoints and subsequently on the subordinate metabolic situation of the test person.

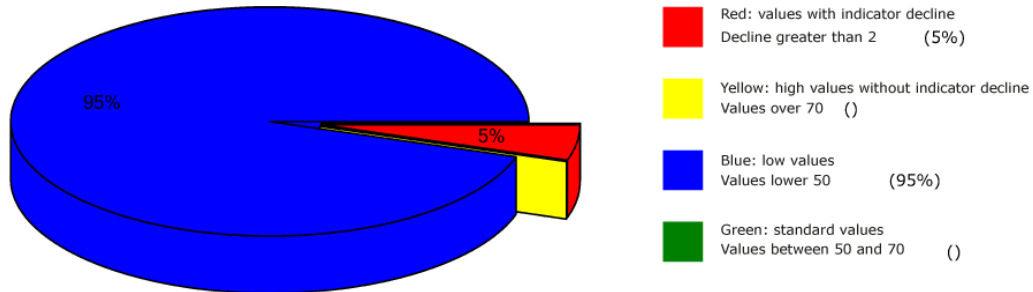
**95 % in the blue area**

**5 % in the red area**

**Conclusion:** As the BESA graphs show, many measurement points are in the degenerative blue range (energy deficiency). However, the picture looks dramatic due to the many measured values in the red area. Here it is important to mention that the BESA 1 test BASIC BEFORE did not show any red measured values and the proband had a very good BESA BASIC test! This BESA test showed a significant deterioration of the subject's energetic situation compared to the BESA 1 test BASIC BEFORE. The red readings represent a total deregulation of these energy areas. This means that the energy system of the organism would seriously damage the test person in case of permanent influences of such or similar interference fields. For a balancing of these red readings or in other words: for a neutralization of the values the energy system needs a strong positive impulse from outside. The comparisons of the BESA graphs confirm the change and the stressing influences by the EMSF on the test person.



## Overview of BESA measuring



## BESA basic test

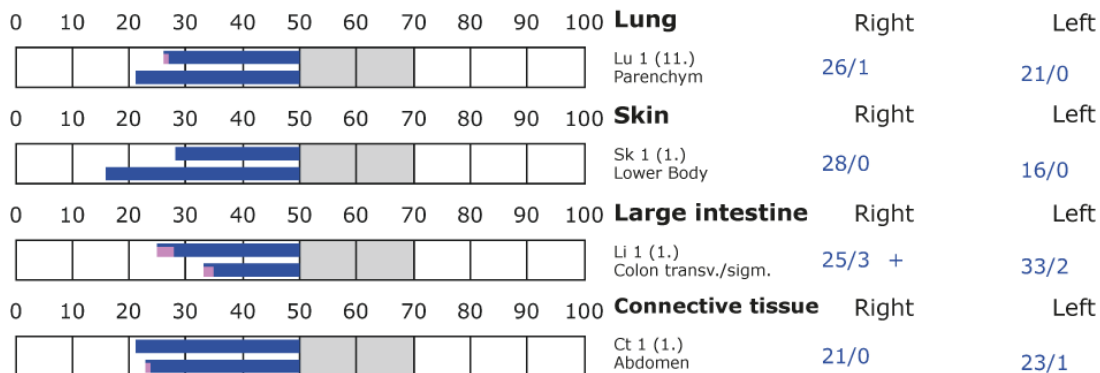
+++ : Indicator decline > 15 Skt.  
++ : Indicator decline 6-15 Skt.  
+ : Indicator decline 3-5 Skt.

T: Total inflammation (>89 Skt.)  
P: Partial inflammation (70-89 Skt.)

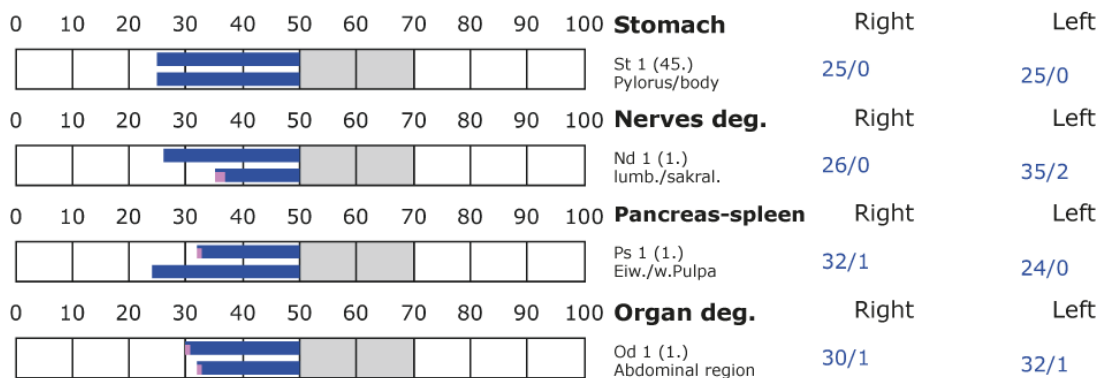
D: Degeneration (< 50 Skt.)

Standard values: (50-70 Skt.)

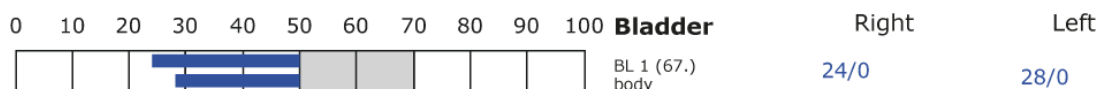
### Element: lu - sk - li - ct



### Element: st - nd - ps - od



### Element: bl - ly - ki - al





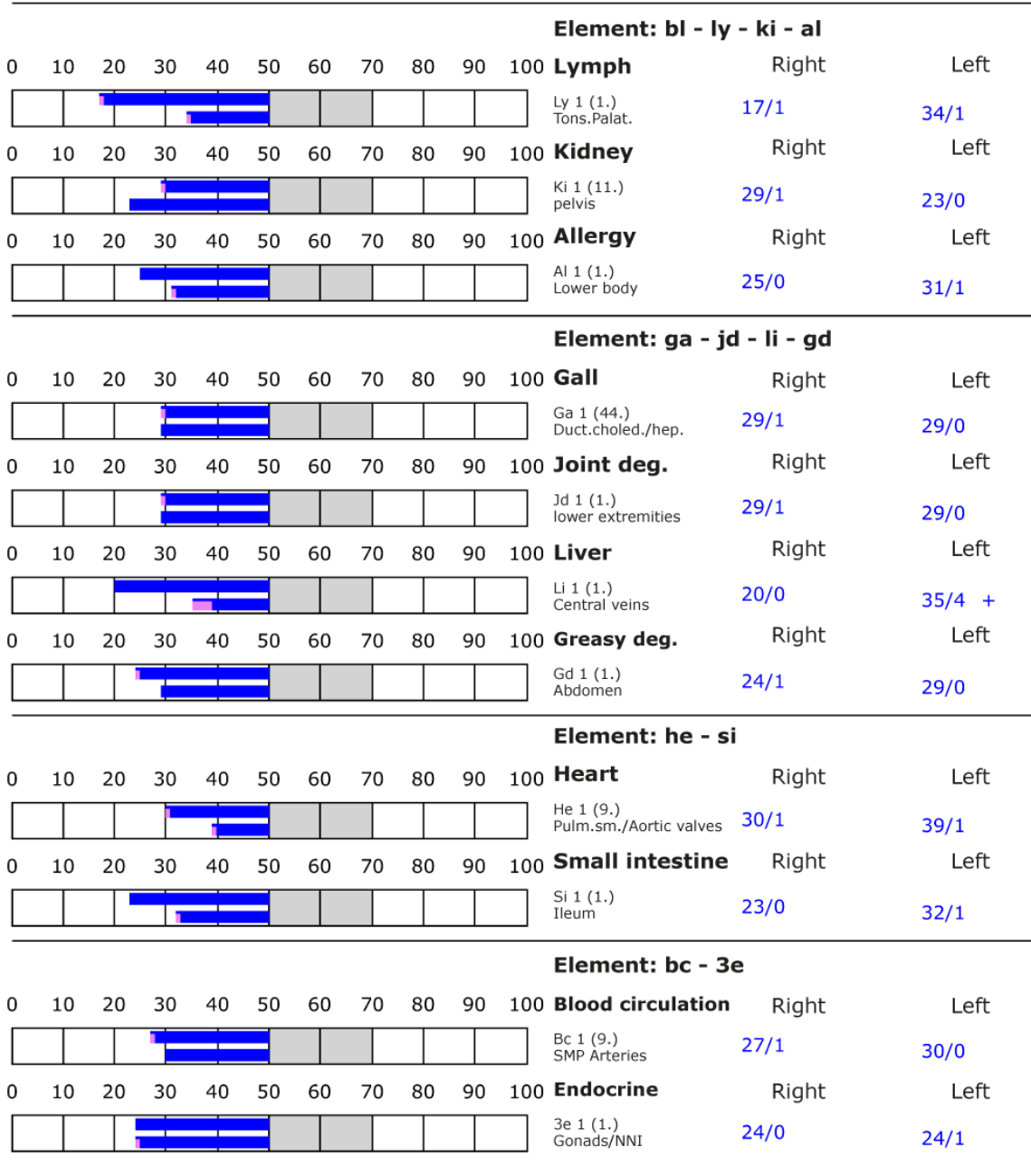
## BESA basic test

+++ : Indicator decline > 15 Skt.  
++ : Indicator decline 6-15 Skt.  
+ : Indicator decline 3-5 Skt.

T: Total inflammation (>89 Skt.)  
P: Partial inflammation (70-89 Skt.)

D: Degeneration (< 50 Skt.)

Standard values: (50-70 Skt.)





## BESA 3 Testing AFTERWARD

### **BESA 3 Testing AFTERWARD - EMSF in Combination with the „Leela Quantum Jacket“**

During the rest of the BESA test, the EMSFs are activated again and tested on the subject together with the "Leela Quantum Jacket". In addition, a cell phone connection is again established; the cell phone is again located on one of the subject's thighs during the BESA test. All BESA tests are performed at the TING points (40 nail fold points on the fingers and toes).

**Goal:** to determine the response of the subject's meridian system when the EMSFs are applied to the subject together with the "Leela Quantum Jacket". To determine the differences compared to the BESA 1 and BESA 2 tests BEFORE.

BESA Test evaluation P73 1.0

from **11-01-2021 at 11:04 – 11:10** (6 Minutes) page 26 and 27

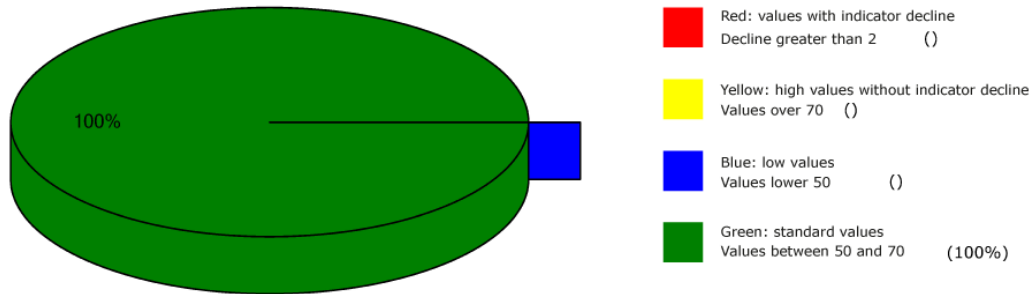
**Result:** The measurement result shows significant improvements at the meridian endpoints or at the energetic state of the test person.

**100 % in the green area**

**Conclusion:** As the BESA graphs show, after testing the "Leela Quantum Jacket" all measurement points were in the green, optimal and neutralized range (balanced energy system). The BESA testing shows a significant improvement of the energy situation in the meridian system of the test person compared to the BESA 1 and especially the BESA 2 tests BEFORE. It is shown that the "Leela Quantum Jacket" is able to give a necessary impulse to the red readings (total deregulation) detected in the BESA BEFORE test for a harmonization (neutralization) into a life-supporting area. The comparisons of the BESA graphs confirm the change and resolution of the stressed (red) acupuncture points on the meridian system of the subject.



## Overview of BESA measuring



## BESA basic test

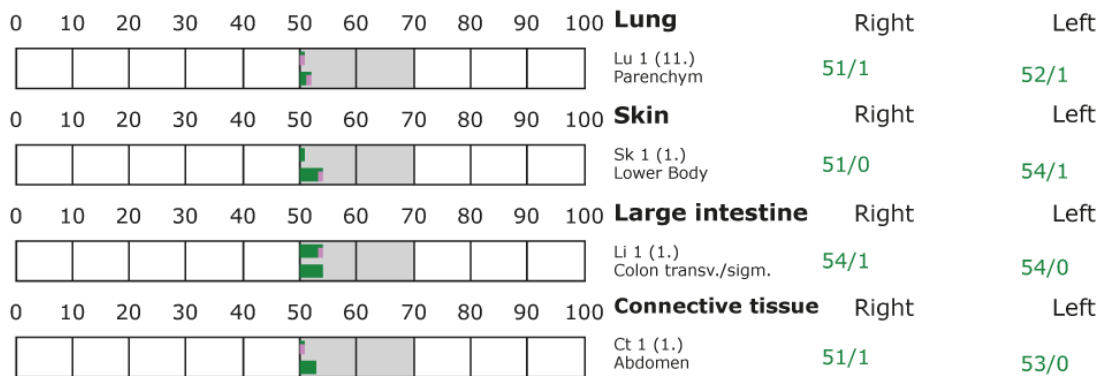
+++ : Indicator decline > 15 Skt.  
++ : Indicator decline 6-15 Skt.  
+ : Indicator decline 3-5 Skt.

T: Total inflammation (>89 Skt.)  
P: Partial inflammation (70-89 Skt.)

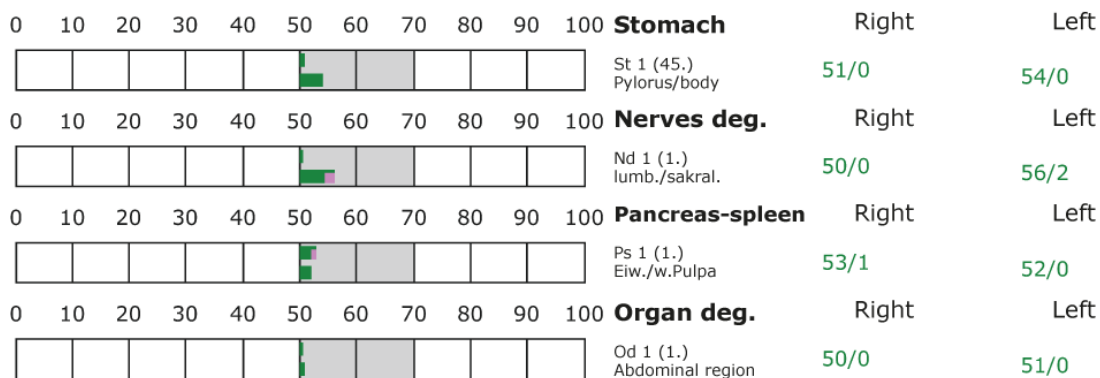
D: Degeneration (< 50 Skt.)

Standard values: (50-70 Skt.)

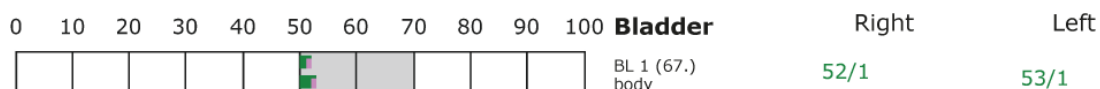
### Element: lu - sk - li - ct



### Element: st - nd - ps - od



### Element: bl - ly - ki - al





## BESA basic test

+++ : Indicator decline > 15 Skt.  
++ : Indicator decline 6-15 Skt.  
+ : Indicator decline 3-5 Skt.

T: Total inflammation (>89 Skt.)  
P: Partial inflammation (70-89 Skt.)

D: Degeneration (< 50 Skt.)

Standard values: (50-70 Skt.)

Element: bl - ly - ki - al										
0	10	20	30	40	50	60	70	80	90	100
<div><div></div></div>					<div><div></div></div>					



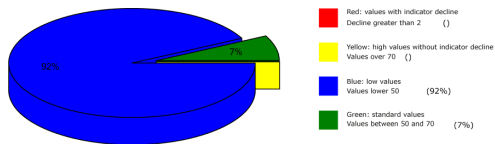


## All BESA tests at a glance

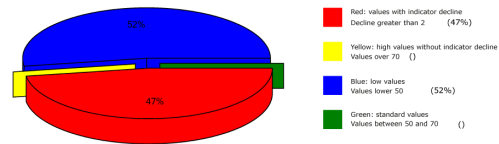
### Proband 1

#### Electromagnetic interference fields - EMSF

Overview of BESA measuring

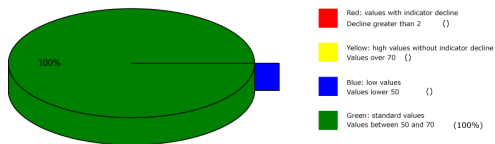


Overview of BESA measuring



### BESA testing after application of the "Leela Quantum Jacket"

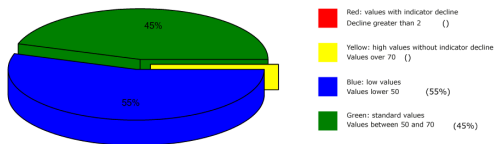
Overview of BESA measuring



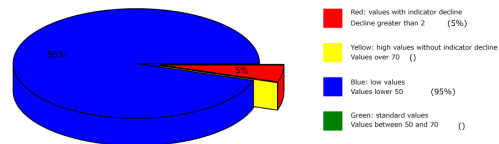
### Proband 2

#### Electromagnetic interference fields - EMSF

Overview of BESA measuring

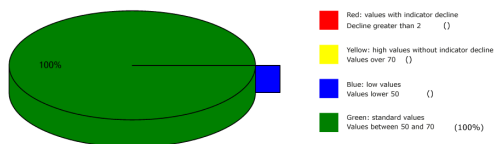


Overview of BESA measuring



### BESA testing after application of the "Leela Quantum Jacket"

Overview of BESA measuring





## General information about the test result

The human being (and all biological objects) represent a kind of receiving antenna for environmental information. This is because the life of man and all other biological objects depends fundamentally and exclusively on environmental information. Our organism is biologically very sensitive where natural information (fields) are located and where they are subject to interactions and fluctuations. For this reason, detected informative electromagnetic interference fields are biologically highly relevant. Any reduction or transformation of these interfering fields (ideally to 100 percent) is biologically very important, often even decisive for life.

These informational disturbances from our environment are only compatible with life if they can be readjusted to a natural fluctuation tolerance. Disturbances, problems, blockades, disharmonies in the biological control circuit of man find their causes in such disturbing information influences.

**Neutralizing or harmonizing effects could be proven in this detailed project P73 1.0 to determine the effect of the "Leela Quantum Jacket".**

The "Leela Quantum Jacket" was able to neutralize the biologically adverse effects and effects determined on the test person in the project.

**The significant ability of the "Leela Quantum Jacket" to neutralize and harmonize the stress factors tested in this detailed project P73 1.0 and transform them into biological life-enhancing goodness is proven with this project.**

## Authorized Summary

The BESA tests carried out by IFVBESA on the energetic and physical effectiveness of the "Leela Quantum Jacket" have clearly shown that it is able to neutralize or harmonize biologically significant stress factors on the energetic system of the test person. By means of the bioenergetic system analysis, the effect of the above-mentioned stress factors on the test persons, their meridian system and their energetic-biological control circuits was questioned and systemically tested on the bioenergetic level. The BESA BEFORE - AFTER tests show significant changes at the tested acupuncture points or at the meridian system. The measurement data as well as their key figures confirm the stress caused by the tested interference fields on the organism of the test persons. The data also impressively confirms that the application of the "Leela Quantum Jacket", the deregulating energies are transformed into body-immanent and biocompatible energies. All measured values improved significantly from the mostly 100-percent blue measuring range to the green



mostly 50-second range (scale value), i.e. the range of optimal measured values. This means: an optimal regulation dynamic has taken place. Here, in the sense of the IFVBESA, one can clearly speak of an optimal, significant improvement of the body's own energy situation.

**Result:** The test persons were brought into contact with heavily stressing frequencies (information) during the BESA-AFTER tests. In contrast to the BEFORE tests, in which the "Leela Quantum Jacket" was not used, positive measurement results were found throughout, indicating that neutralization or harmonization had taken place. The regulation dynamics developed into an optimal effective range. From a holistic point of view, it can be assumed that the positive effect on the test persons will also occur in other people.

By demonstrating the bioenergetic effectiveness of the "Leela Quantum Jacket" in this P73 project, the requirements for obtaining a BESA seal of approval from the International Professional Association for BESA were met.